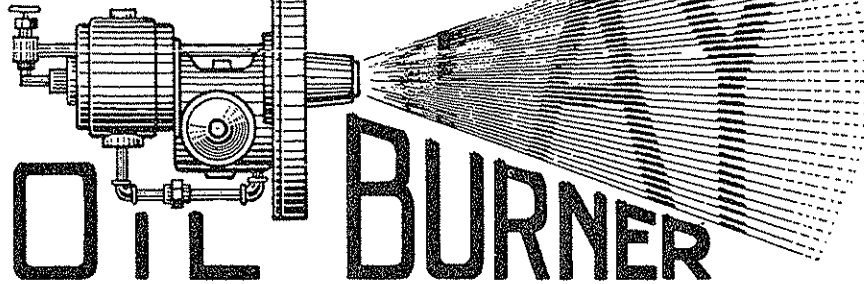


POWER PLANT ENGINEERING CO.

1933 FIFTH AVE.
ELLIOTT 1083



FOR HOME OR POWER PLANT

Burns 14°+ or 24°+ Fuel Oil in Any Furnace or Boiler

Economical

Convenient

Dependable

Automatic

Flexible

Efficient

Due to the Angular Vane Nozzle, positive motor driven atomizing cup and perfect air control the RAY is recognized by architects, engineers and users everywhere as the most efficient and best oil burner. Thousands are in operation in the States, hundreds in Seattle and dozens in Alaska.

CLEAN—QUIET—SAFE

PLIBRICO JOINTLESS FIRE BRICK

Users of fire brick will be glad to learn about PLIBRICO, the plastic jointless fire brick. Send for free descriptive booklet.

Power Plant Engineering Company

HEAD OFFICE

1933 5th Ave., Seattle
Elliott 1083

KETCHIKAN AGENTS

Davies & Gilbert

BRANCH OFFICE

622 Tacoma Building, Tacoma
Main 919

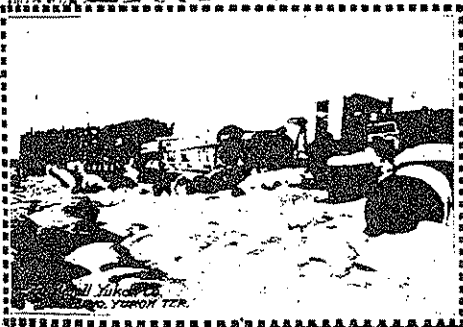
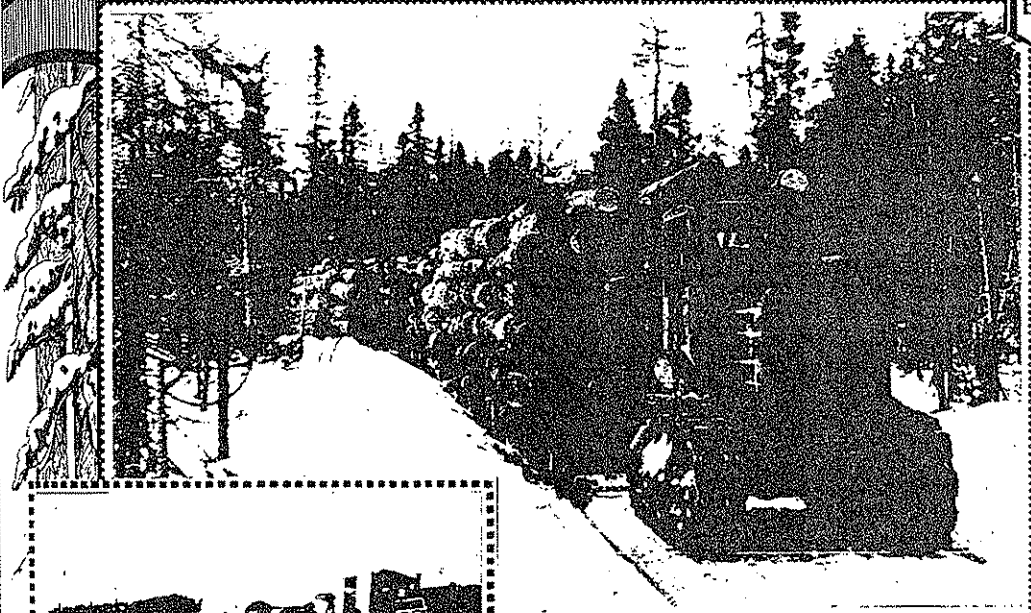
JUNEAU AGENTS

Marshall & Newman Co.

Representatives in Other Alaska Cities

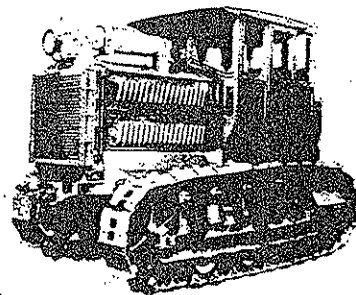
The Caterpillar on Sleigh Haul

There's only one Caterpillar Holt builds it



Cross-Country Freighting:

No climate or kind of work prevents the "Caterpillar" Tractor from delivering cheap dependable power. No outpost is too far away to bank on service, for service is built into every Holt machine. The "Caterpillar" is already filling Alaska and Yukon Territory's greatest need—reliable transportation power. Write for "Caterpillar" literature.



The Northern Logger with complete winter equipment

CATERPILLAR

The Holt
MANUFACTURING CO.
SPOKANE, WASH.
FACTORIES AT
STOCKTON, CAL. PEORIA, ILL.
J.E. Caldwell Agent 311 Pioneer Bldg. SEATTLE, W.N.
J.W. Hill Agent Henry Bldg. PORTLAND, ORE.
H.E. Carman Agent 334 Cordova St. West VANCOUVER, B.C.

Colby & Dickinson

Incorporated



LUMBER AND BUILDING MATERIAL



SEATTLE, WASH.

We Carry a Complete Line of All
Kinds of

LUMBER

Fir Finish and Mouldings
Lath, Shingles
Building Paper
Wall Board and Roofing

Write or Cable Us

Will Give You Immediate Service and
Guarantee Our Grades

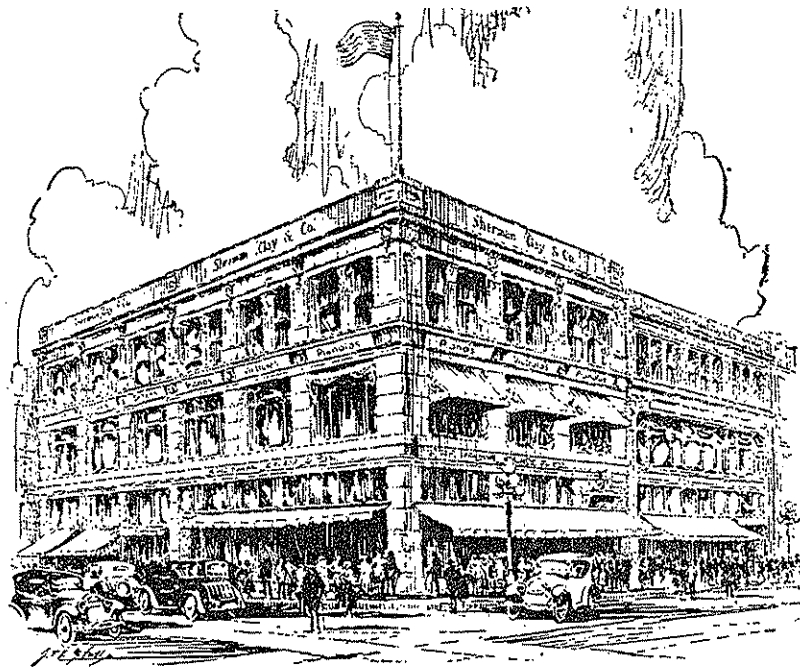
• •

Colby & Dickinson, Inc.

426 White-Henry-Stuart Building

SEATTLE, WASH.

"Everything in Music"



Sherman, Clay & Co. offer you an unequalled Musical Service. Here you will find a vast organization, devoted entirely to supplying the highest grades of musical merchandise, and able to intelligently serve your every musical need.

Our stock of highest grade instruments include:

Steinway, Weber and other pianos
 Duo-Art Reproducing Pianos
 Aeolian Pianolas and other Player Pianos
 Victrolas and Victor Records
 King and American Perfection Band Instruments

Our Sheet Music Department carries the largest stock of Sheet Music, Music Books and orchestrations in the Northwest.

Any musical instrument may be purchased on very convenient terms. Write us for information—we will gladly forward catalogs and explain our convenient payment plan.

"Everything in Music"

Sherman, Clay & Co.

Third Avenue at Pine
 SEATTLE

Tacoma, Spokane, Portland

First in Alaska homes

Because of its excellence as a newspaper and because of the interest which it has always taken in Alaska affairs, the Post-Intelligencer is read in more Alaska homes than any other newspaper published outside the territory.

In the newspaper world, the Post-Intelligencer greatly resembles the northern empire.

This newspaper's phenomenal growth has taken place but recently. Within two years it has practically doubled its population of readers on week days, and trebled its population of readers on Sunday.

Alaska's progress has been due largely to its many resources. Likewise, the Post-Intelligencer's progress has been due to the wealth of news and features which it has presented.

Today, the families who read the Post-Intelligencer number more than

67,000 **and** **145,000**
DAILY **SUNDAY**

For \$1.25 a month you can have the Post-Intelligencer, the Pacific Northwest's greatest newspaper, delivered to your home.

SUBSCRIBE TODAY

CHARACTER QUALITY AMERICA ACCURACY ENTERPRISE
Seattle Post-Intelligencer
 THE AMERICAN PAPER THE AMERICAN PEOPLE

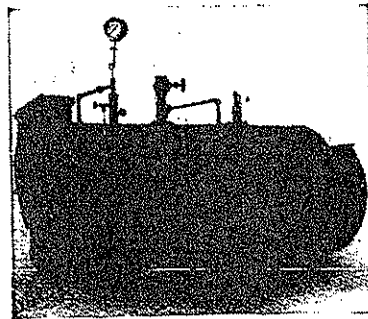
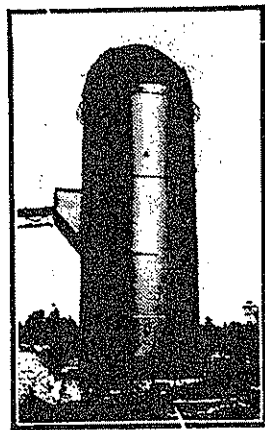
SIXTH AND PINE ST.

SEATTLE, WASH.

BOILERS

WATER AND OIL TANKS

Manufacturers and Erectors of Steel Pipe Lines and Penstocks, Steel, Brick, Tile, and Cement Smoke Stacks.



REFUSE BURNERS AND TOPS A SPECIALTY

Wholesale and Retail Dealers in wire cloth for burner tops and smoke stacks.

REPAIRING DONE ON SHORT NOTICE

Seattle Boiler Works

PHONE SUNSET 0555

1128-1132 West 45th St.

Seattle, Wash.

*The Largest and only Complete
Printing Plate making Establishment
in the State*

**THE ART CRAFT CO.
ENGRAVERS
AND THE
SEATTLE ELECTROTYPE CO.
ELECTROTYPERS**

DESIGNING
COPPER AND
ZINC HALFTONES
ZINC ETCHINGS
ZINC AND BRASS
EMBOSSING DIES
COLOR PLATES

**1010 FIRST AVE.
SEATTLE WASH.**

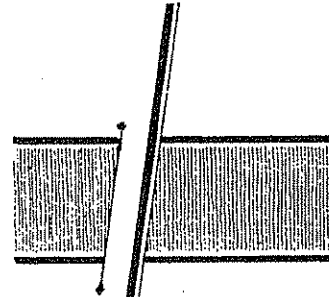
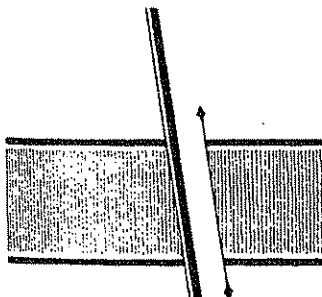
ELECTROTYPES
STEREOTYPES
NICKELTYPES
WAX RULING
MATRICES
MULTIGRAPH PLATES
CURVED PLATES

**Newspapers, Publishers
Business Houses and
All Users of**

“CUTS”

Our complete service is
an advantage to you.

Orders received in the
morning will be finished the
same day.



A Complete Plant means Quick Service

Hofius Steel and Equipment Company

Northwestern Agents for LIMA LOCOMOTIVE WORKS

Fabricated Structural Steel
Reinforcing Bars
Beams Channels Angles
Plates



Geared Locomotives, Cars
Railway Motor Cars
Rails, Angle Bars, Spikes
Bolts, Railroad Crossings
Switches, Frogs
Track Tools

28th Floor, L. C. Smith Bldg. Tel. Main 6747

Railway Equipment

FOR

Mining and Logging Operations

■ ■

RAILS—SWITCH MATERIAL
TRACK FASTENINGS
TRACK TOOLS

LOCOMOTIVES—ALL TYPES
CARS

■ ■

We Carry Complete Stocks of Railway Equipment or
Fabricate Same to Your Specifications
on Short Notice

■ ■

STRUCTURAL STEEL
PLAIN AND FABRICATED

■ ■

Hofius Steel & Equipment Co.

28th Floor L. C. Smith Bldg.

SEATTLE

PRINTING BINDING *and* RULING

We operate a modern Printing Plant and Bindery and produce the highest quality in all classes of printed matter—Loose Leaf Forms, Blank Books, Stock Certificates and Bonds.

Lowman & Hanford Co.

FIRST AVENUE
AND CHERRY STREET

THIRD AVENUE
BETWEEN PIKE AND PINE

SEATTLE

Office Furniture Office Supplies

Fine Stationery
Engraving
Books

Kodaks

Photo Finishing
Picture Framing

Engineering Instruments

Drawing Materials
Blue Printing

School Supplies

Catalogs on Request

Lowman & Hanford Co.

FIRST AVENUE
AND CHERRY STREET

THIRD AVENUE
BETWEEN PIKE AND PINE

SEATTLE

LINK-BELT

Elevating, Conveying and
 Power Transmission Machinery
 Ore Handling and Screening Equipment
 Special Cannery Chains
 Fish Elevators and Conveyors



Link-Belt Silent Chain and Cut Wheels
 Roller Chains and Cut Sprockets
 Saw Mill Chains, Etc.
 Shafting, Bearings, Gears

Labor-Saving Equipment for All Purposes

SEND FOR SPECIAL CATALOGS

Our Engineering Department Is at Your Service



Office and Warehouse, Seattle

SEATTLE, WASH.

PORTLAND, OREGON

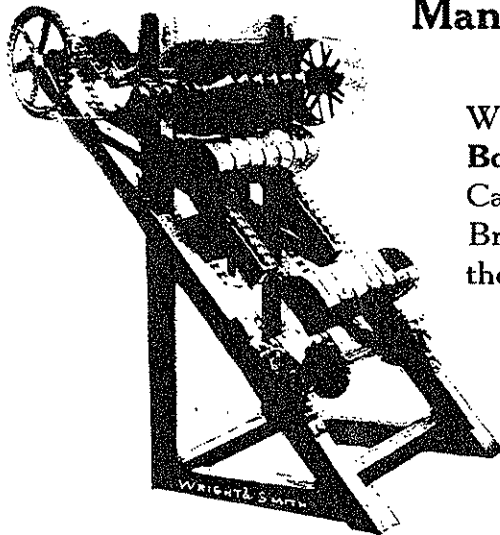
WRIGHT & SMITH MACHINE WORKS

INCORPORATED

Foot of King Street, SEATTLE, WASH.

Manufacturers of Canning Machinery

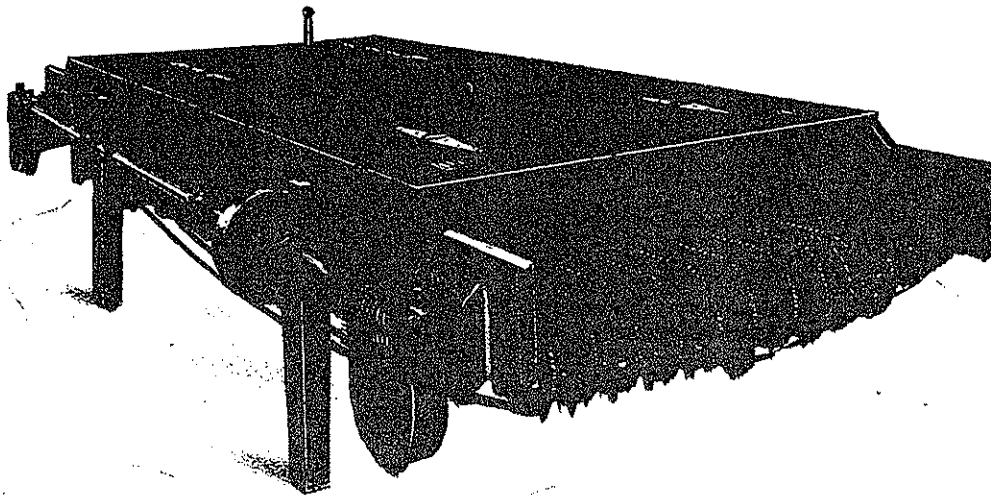
We have supplied our Exhaust Boxes to the leading Salmon Canneries on Puget Sound, British Columbia, Alaska and the Orient.



We Also Manufacture

**ELEVATOR FISH CUTTERS,
TRUCKS, TRAVELERS, Etc.**

General Marine Repair and Jobbing Work



WRIGHT & SMITH EXHAUST BOX

Built With the Side-Shaft Drive. Strong and Positive. Smooth Running.



ELDRED IRELAND
Treasurer and General
Sales Manager

TRICK &
STATIONERY, PRINTING, ENGRAVING, RULING, BLANK B

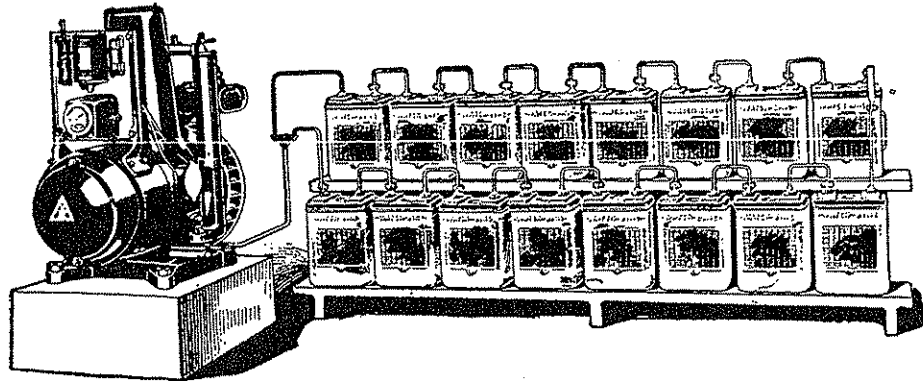
"Art Metal Steel De

MURRAY
LOOSE LEAVES, OFFICE SUPPLIES AND EQUIPMENT

**1005 2nd Ave.
SEATTLE**

and Filing Cases"

LIGHTING PLANTS



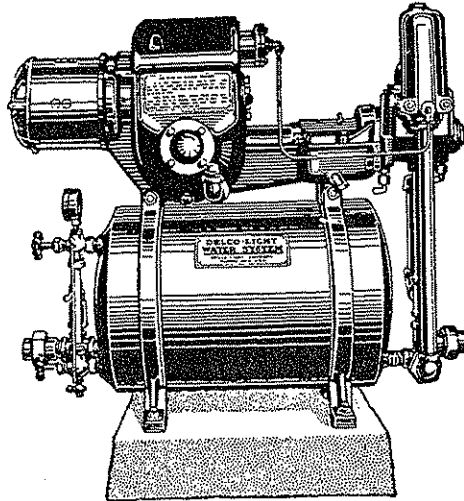
For General Farm, School, Store, Church
and Country Home Service

Size of plants range from 600 watts to 2500 watts capacity.

ENGINE—Air-cooled, valve-in-head, 4 cycle, single cylinder, Delco-Light Battery ignition, simple mixing valve. Operates on kerosene or gasoline. Self cranking. Splash system of lubrication—one place to oil.

We will be glad to figure with you on your lighting plant installation. Over 200,000 satisfied users.

DELCO-LIGHT WATER SYSTEMS



Shallow and Deep well water pressure systems, ranging from surface level to 200 feet in depth. Write us for catalogs on information, giving us depth of well and amount of water desired.

Modern Appliance Company

Northwest Distributors

508 FIRST AVE. S.

SEATTLE, WASH.

P E R I N E **MACHINERY CO.**

MACHINERY **MERCHANTS**

SEATTLE, WASH.

Machine Tools

Woodworking Machinery

Mining Machinery

Crushers

Steam, Gasoline and Electric Hoists

Air Compressors and Rock Drills

Boilers, Engines

Shafting, Pulleys, Belting

Welding and Cutting Torches and Generators

SEND US YOUR INQUIRIES



IRON and STEEL

RIVETED WELDED PIPE

STACKS, TANKS, DREDGER PIPE

And General Line Fabricating

Hydraulic Supply Mfg. Co.

PHONE GLENDALE 0595

4300 EIGHTH AVE. SO.

SEATTLE, WASH.

Schwabacher Bros. & Co.

INCORPORATED

Manufacturers, Importers, Coffee Roasters and Tobacconists

WHOLESALE GROCERS

300-302-304-306-308 Occidental Avenue, Corner Main Street

SEATTLE, WASHINGTON

ROASTERS OF

GOLD SHIELD

VACUUM PACKED COFFEE

Blenders and Packers of Gold Shield, Orange Pekoe,
Ceylon and India Teas

DISTRIBUTORS OF

HAPPY HOME BRAND

Highest Grade

CANNED FOODS

DISTRIBUTORS OF

Lovera, Roi-Tan and Mozart Cigars

DISTRIBUTORS OF

No-Box Art Chocolates

Morris & Co.'s CANNED MEATS

Pillsbury's FLOUR

C. & C. Ginger Ale and Anheiser-Busch Budweiser

And Many Other Popular Lines

WE GUARANTEE PROMPT AND SPECIAL ATTENTION
TO ALL MAIL ORDERS

O. B. WILLIAMS CO.

SASH AND DOORS

Frames, Mouldings, Inside Finish, Screens, Storm Sash, Hot Bed Sash, Store Fronts, Panels, Plaster Board, Colonades, Flour Bins, Drain Boards, Mirrors, Kitchen Cabinets and Sideboards, Stair Material, Paints, Builders' Hardware, Etc.

WE SELL ANYBODY—SHIP ANYWHERE

ONE PRICE—PROMPT SHIPMENTS

Send for our big Illustrated Sash and Door Catalog.
Mailed free, postpaid, on receipt of request.

O. B. WILLIAMS CO.

1943 First Ave. So.

SEATTLE, WASH.

SASH and DOORS

“Direct from Mill to User”

—the economical selling plan of this modern woodworking establishment that enables you to build or remodel your home to best advantage at least cost. Here in this great plant, comprising about 60,000 feet floor space, the highest grade Sash and Doors and all kinds of cabinet work—French Doors, Mirror Doors, Breakfast Nooks, Kitchen Cabinets—are turned out direct to buyer at first hand prices. Thus everything desirable in woodwork, embodying the very highest standard of materials and workmanship, is procurable without retailers' profits.

Send For Our Large, Free Illustrated Catalog and Price List
It Contains Many Valuable Suggestions

O. B. WILLIAMS CO.

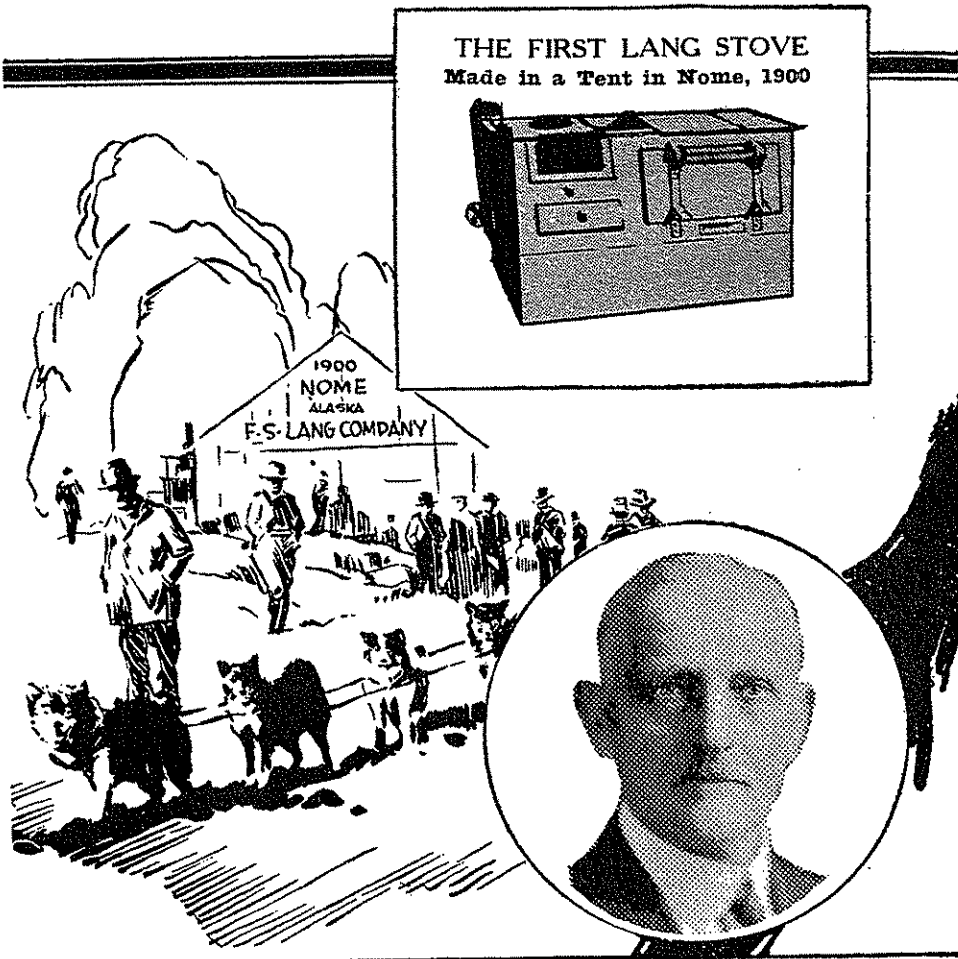
ESTABLISHED 1899

SASH and DOORS

1943 First Ave. S.

SEATTLE

Phone Main 1547



Alaska was a chilly place
So the soursault day
Till Lang and his stove
Into the harbor hove
And chared all their troubles away

We manufacture many types of family ranges, hotel ranges, heating stoves, furnaces and sheet metal specialties. **DO NOT BUY AN IMITATION — BUY THE ORIGINAL LANG.**

The Beginning of a Great Western Institution

THE FIRST LANG STOVE and Frank S. Lang's first tent factory, in Nome, Alaska, 1900. Thus began an industry destined to become one of the largest stove manufacturing organizations in the west and producing a product outstanding in its field. With the first Lang Stove, came a new era in stove manufacturing, a principle so different and strictly original that old line stove makers laughed at it. Today they are trying to copy it. This patented feature, the Hot Air Draft, Smoke Burning principle is embodied in every Lang Range made.

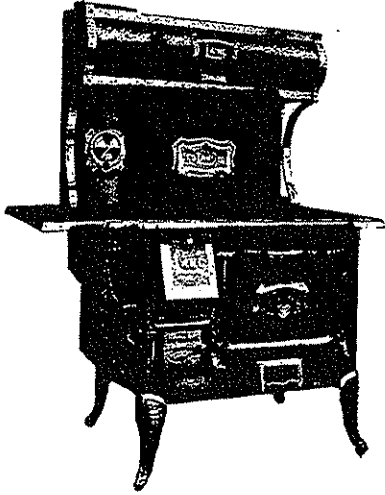
**IF YOUR DEALER CANNOT SUPPLY YOU
WRITE US DIRECT**

F. S. Lang Manufacturing Co.
SEATTLE, WASH.

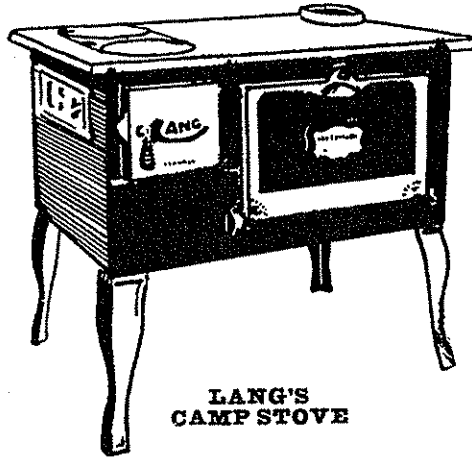
WRITE FOR LIST OF ALASKA DEALERS
Send for Our New 1923 Catalog

"For fifty years there was no change,
Till Lang did build the Hot Blast Range."

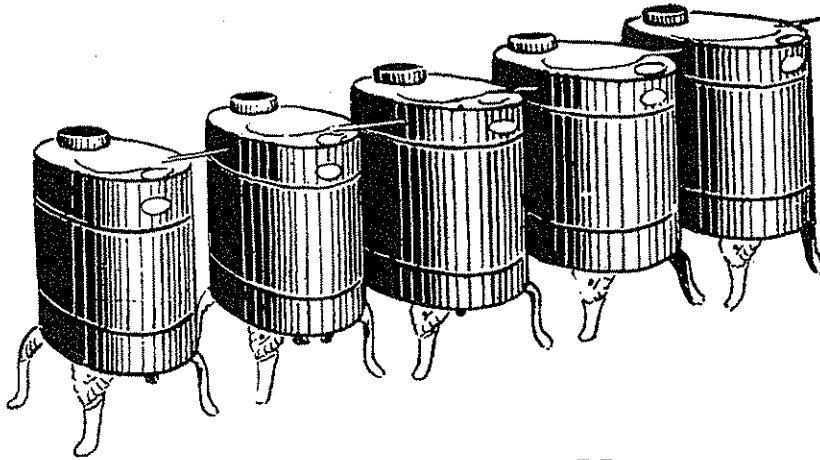
A Few Lang Models—



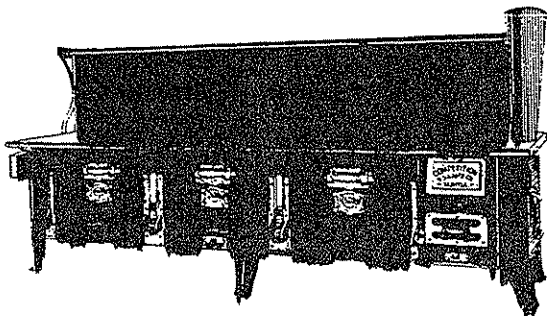
**LANG'S
PACIFIC**



**LANG'S
CAMP STOVE**



LANG'S AIRTIGHT HEATERS



LANG'S PATENTED HOTEL RANGES
Made with 1, 2, 3 and 4 ovens.



**LANG'S
ALASKA**

A Range for Every Need
Send for Catalog

HARDWOODS

For

BOAT BUILDING

Oak, Iron Bark
and Teak

...

Hickory for Sleds

...

Ehrlich-Harrison Co.

SEATTLE

Ehrlich-Harrison Co.
SEATTLE

HARDWOODS

Oak and Maple
FLOORING

Built-Up Hardwood Panels
Hardwoods For Finish

Northwest Testing Laboratories

Successors to

Bogardus & Knisely Laboratories

ESTABLISHED 1890

**Engineers, Metallurgists
Assayers, Chemists**

**CONSULTATIONS
EXAMINATIONS
ORE TESTING**

Amalgamation, Concentration, Cyanidation Magnetic
Separation, Flotation Tests

BEST EQUIPPED LABORATORIES ON THE COAST

We Look After Shipments at the Smelter

CONTROL AND UMPIRE ASSAYS

SEATTLE, WASH.

Northwest Testing Bldg., 2113 3rd Ave. Phone Main 0680

PORTLAND, ORE.
3 Stubbs Building

VANCOUVER, B. C.
214 Birks Building

CHEMISTS

Northwest Testing Laboratories

Successors to

Bogardus & Knisely Laboratories

ESTABLISHED 1890

Chemists—Metallurgists

Analyses of All Products

FOODS—FERTILIZERS—OILS—COALS

Complete Equipment For Flour and All Cereal
Analyses and Tests

SEATTLE

Northwest Testing Bldg., 2113 3rd Ave.,
Phone Main 0680

BRANCHES

3 Stubbs Bldg., Portland, Ore.

214 Birks Bldg., Vancouver, B. C.

FAIRBANKS, MORSE & CO.

TYPE "C-O" MARINE OIL ENGINES
30 TO 300 H. P.

TYPE "Y" STATIONARY ENGINES
10 TO 300 H. P.

TYPE "Z" KEROSENE ENGINES
1½ TO 20 H. P.

ELECTRIC MOTORS AND DYNAMOS
½ TO 500 H. P.

Pumps—Steam, Power and
Centrifugal

FAIRBANKS SCALES
FOR EVERY PURPOSE

Cannery
Mining
Mill

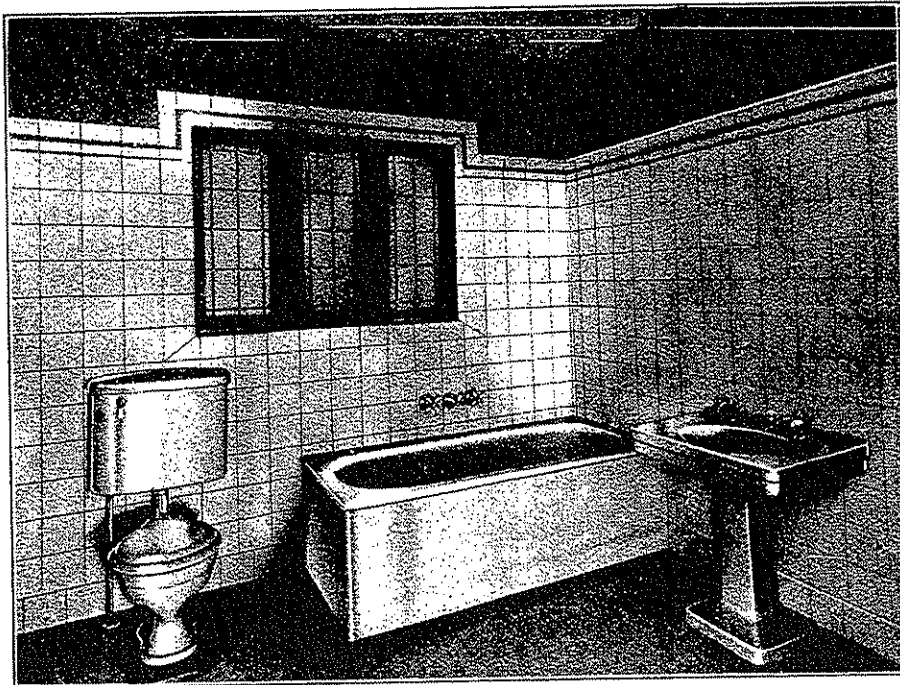
SUPPLIES

Fairbanks, Morse & Co.

550 First Avenue South
SEATTLE, WASH.

BOWLES COMPANY

PLUMBING, HEATING, MILL
and MINE SUPPLIES

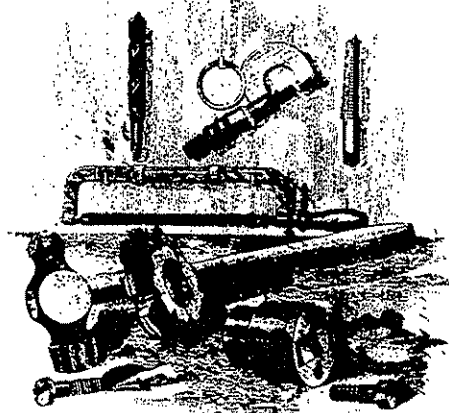


GEO. F. FORREST, Alaska Representative
JUNEAU, ALASKA

Pipe, Fittings, Valves, Boilers, Radiators, Sheet
Iron, Tin Plate, Conductor Pipe, Brass Ware,
Enamel Ware, Earthen Ware, Oil Well
Supplies, Water Systems, Etc.

101-3-5 Jackson Street

Seattle, Wash.



FINE TOOLS AND SUPPLIES

For

MACHINISTS
TOOL MAKERS

FOUNDRYMEN
PATTERN MAKERS AND PLATERS

ELECTRICIANS

CRAGIN & CO.

JOBBERS OF
SHOP AND FOUNDRY SUPPLIES

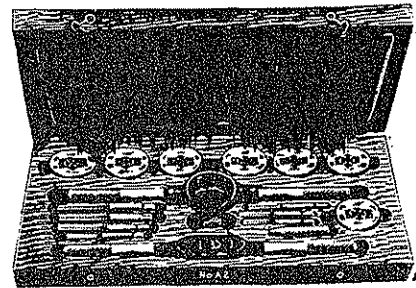
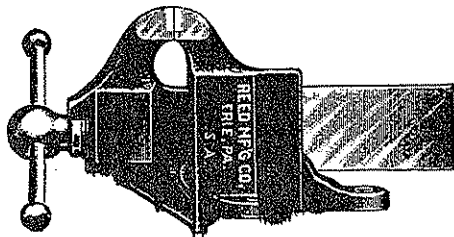
932 FIRST AVE. SOUTH

SEATTLE

**ALUMINUM, BRASS, BRONZE, COPPER, NICKEL SILVER,
AND STEEL, IN BARS, SHEETS, TUBES AND WIRE**

Distributing Agents for

- | | |
|---------------------------------|--------------------|
| MORSE TWIST DRILL & MACHINE CO. | AMERICAN BRASS CO. |
| CARBORUNDUM CO. | REED MFG. CO. |
| L. S. STARRETT CO. | |



A. M. Castle & Co. of Washington

32 West Connecticut Street

SEATTLE

HEAVY HARDWARE, IRON AND STEEL

Construction, Boiler Shop, Foundry, Lumber and
Shingle Mill, Logging, Machine Shop, Mining,
Railroad, Street Car and Transportation
Companies' Supplies.

WAREHOUSE STOCKS

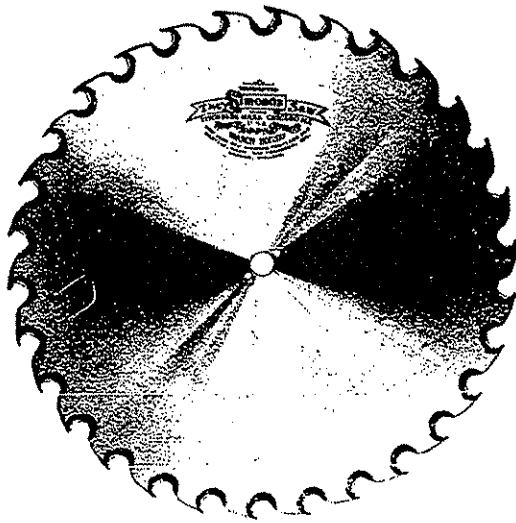
“ARMCO” Rust-Resisting Products,

“ARMCO” Ingot Iron Sheets, Plates, Eave
Trough, Conductor Pipe, Elbows and Shoes.

Steel Bars, Reinforcing Bars, Structurals, Shapes, Plates,
Sheets, Shafting, Staybolt Iron, Hoops and Band
Steel, Pipe, Boiler Braces, Boiler Heads, Manholes
and Covers, Boiler Tubes, Brass and Copper
Sheets, Rods and Tubing, Condenser Tubes,
Yale Hoisting Blocks, Hoisting Chain,
Bolts, Nuts, Wire and Cement Coated
Nails, Rivets, Spikes, Valves, Chain.

■ ■

We offer a service covering the entire range of Heavy
Hardware, Iron and Steel for shipment either direct
from the mills or immediately from our warehouses.



SAWS

of finest quality that save you money. They cut longer and easier. Made of Simonds Steel, hardened and tempered the Simonds way—they saw more lumber.

CIRCULAR SAWS—

Solid and Inserted Point
 Inserted Tooth Cut-Off Saws
 Band Saws

Crescent Ground Cross-Cut Saws
 "Blue-Ribbon" Hand Saws
 Non-breaking Hack Saw Blades
 and Files

EDGE HOLDING MACHINE KNIVES

PLANER KNIVES—

High Speed Steel
 Welded High Speed Steel
 Carbon Steel

BARKER KNIVES
 CHIPPER KNIVES
 HOG KNIVES

You can't get better Saws or Knives than those made by us. Write for complete catalog and tell us the kind of saw you want to purchase.

SIMONDS

SAW AND STEEL CO.

410 Occidental Ave.

Seattle, Washington

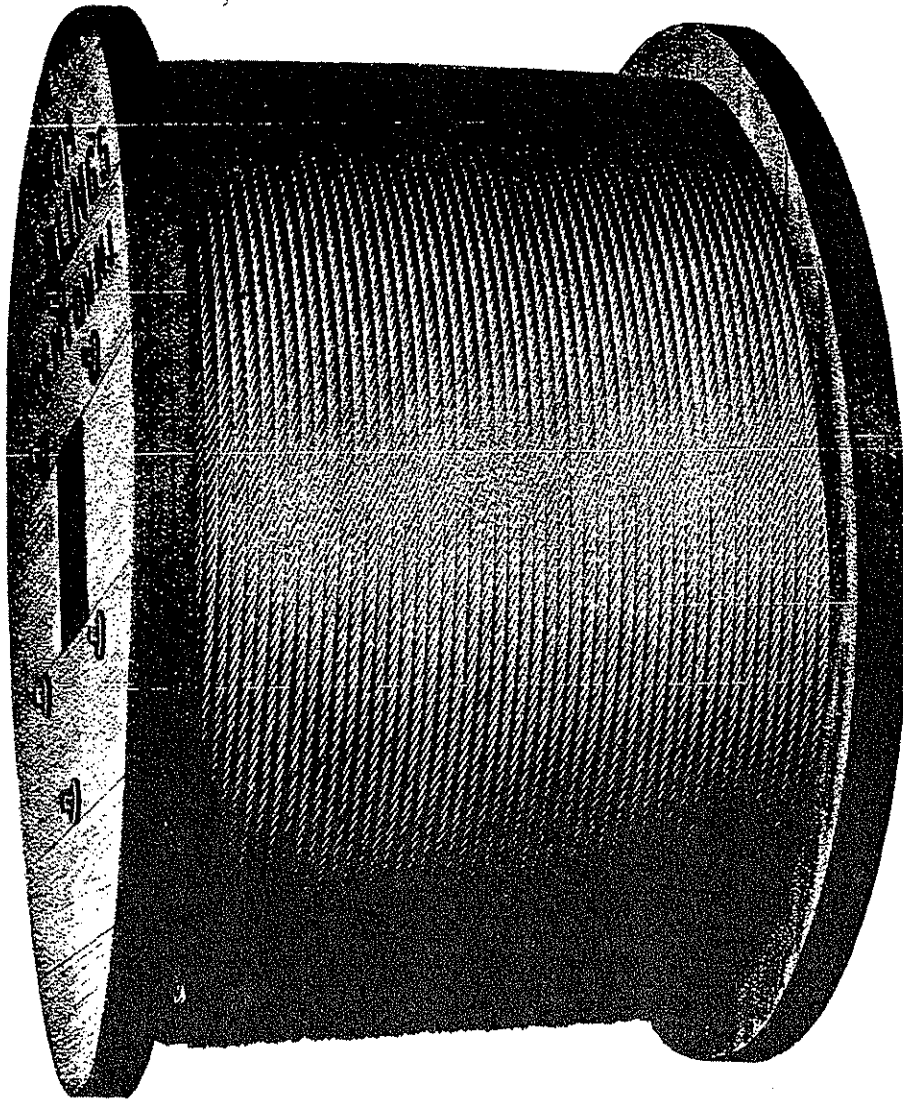


John A. Roebling's Sons Co.

OF CALIFORNIA

Manufacturers of

**IRON, STEEL and COPPER WIRE ROPE and WIRE
INSULATED WIRE and CABLES
WIRE CLOTH and NETTING**



Distributors of

**Fox Farm Netting, Common Wire Products, Fencing,
Wire Rope, Fittings, Etc.**

900 FIRST AVE. SOUTH

SEATTLE, WASH.

KRISTOFERSON'S

PERFECTLY
PASTEURIZED
MILK

WHIP CREAM, BUTTER MILK and
COTTAGE CHEESE

*Shipped Weekly
To Alaska*

Regular customers in Cordova, Skagway, Sitka, Juneau, Ketchikan and Wrangell are able to supply their trade with Kristoferson's Perfectly Pasteurized Milk and Cream by taking advantage of our weekly shipping arrangements.

The Milk arrives in perfect condition and we can arrange to ship to meet your requirements either by Alaska Steamship or Admiral Line Boats.

Tell us how much Milk you require and we will give you prices and full details of our shipping arrangements.

A KRISTOFERSON, INC.
SEATTLE, WASH.

Richardson & Holland, Inc.

518 FIRST AVE. S., SEATTLE, WASH.

Importers, Manufacturers and Jobbers of Fancy and Staple Food Products for Bakers, Confectioners, Soda Fountains, Ice Cream Manufacturers, Commissaries, etc.

We Specialize in Food Products and Do Not Handle Machinery or Equipment



Arkady Yeast Food
Almond Paste
Ammonia
Acid, Tartaric
Acid, Citric
Acid, Phosphoric
Baking Powder
Caramel Color
Cocoa
Chocolate, Ground
Coatings, Chocolate
Coffee
Colors, Food
Colors, Liquid
Colors, Dry

Colors, Paste
Cream Tartar
Cream Tartar, Substitute
Cream of Maize
Cocoanut
Cocoanut Butter
Cherries, Maraschino
Whole
Whole and Broken
Crushed
Glaze
Coca Cola
Currants
Corn Syrup (Glucose)
Egg Albumen
Egg Yolk
Egg, Whole
Extracts, Flavoring
Emulsions
Essential Oils
Foam, Soda
Fruits, Pie
Fruits, Cold Pack
Fruits, Fountain
Fruits, Ice Cream
Fruits, Glaze
Fruits, Dried
Fruit Juices
Fruit Peels
Fruit Pulp
Fruit Syrups
Florolene, Dry
Shortening
Grape Juice
Gelatine
Glaze, Chocolate
Glucose (Corn Syrup)
Gums, Powdered

Hops
Honey
Hunelene
Hires Syrup
Ice Cream Cabinets
Ice Cream Cones
Ice Cream Powder
Ice Cream Tubs
Invert Sugar
Jams
Jellies
Kernel Paste
Kremolene
Ice Cream Ripener
Maple Flavor
Maple Sugar
Malt Syrup
Milk Powder
Molasses
Mince Meat
Marshmallow Powder
Marshmallow Topping
Marshmallow Sheet
Monarch Cream
Nograin Syrup
Nutmeats
Oil, Corn
Oil, Slab
Pastry Powder
Peanuts, Shelled
Peanuts, Blanched
Paste, Orange
Paste, Fig
Paste, Lacom
Paper Napkins
Piethick
Raisins
Rice Flour



Seeds, Flavoring
Soda, Baking
Spices, Whole
Spices, Ground
Starch, Corn
Strawberries
Cold Pack
Preserved
Sugar, Velvet
Icing
Sugar, Corn
Sugar, Nonpareil
Sugar, Liquid
Syrup, Refiners
Syrup, Table
Tapioca Flour
Tapioca, Granulated
Tea
Whip Powder

NORTHWEST DISTRIBUTORS

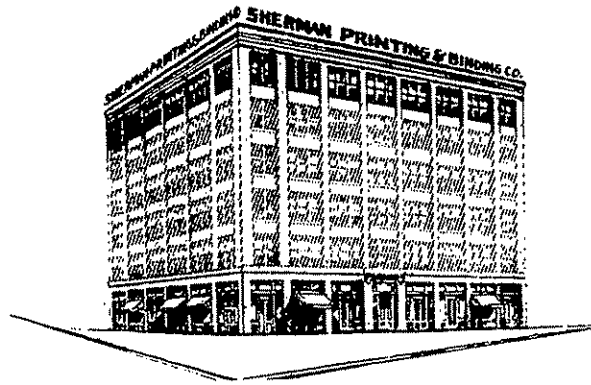
CHALMER'S PURE FOOD EDIBLE GELATINE

WARD BAKING COMPANY'S PRODUCTS

ARKADY YEAST FOOD—FLOROLENE DRY SHORTENING

Quotations and Samples Gladly Sent on Request

Specialists in
Direct-by-Mail
Advertising



Equipped for
Exceptionally
Big Jobs

Sherman Printing & Binding Co.

SEATTLE'S LARGEST MANUFACTURING PRINTERS

Catalogs

Stationery

Booklets

Office Forms

Magazines

General Printing

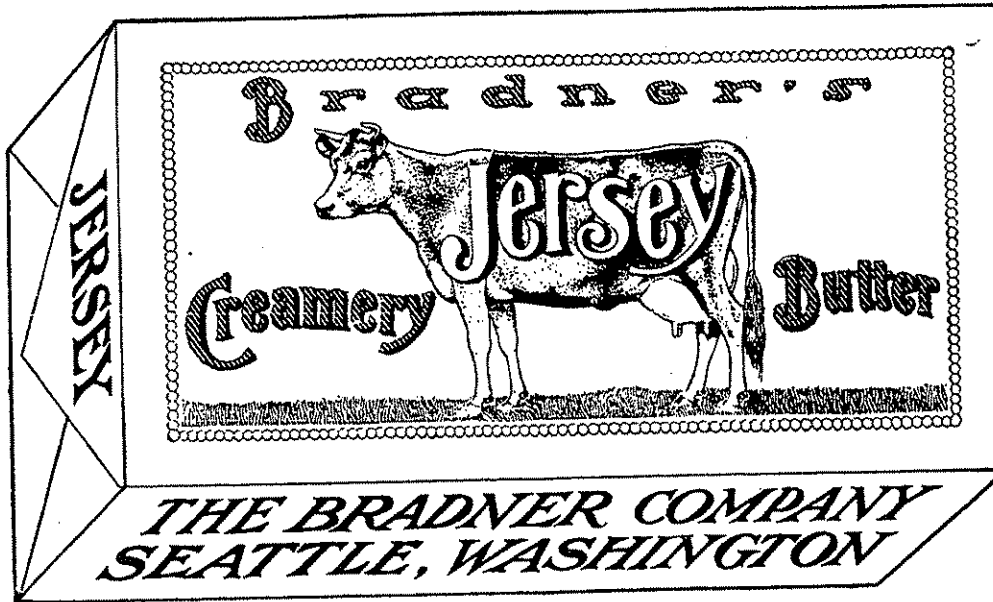
Send Us Your Orders for
Your Printing Requirements

**QUALITY, SERVICE AND PRICE CONSIDERED
THERE IS NONE BETTER**

We will write, print, address and mail your entire campaign
all under the one roof.

71 COLUMBIA ST., SEATTLE, WASH.





BRADNER'S JERSEY CREAMERY BUTTER

IS MADE FROM
HIGHLY PASTEURIZED CREAM

Giving JERSEY BUTTER That
Keeping Quality so Essential for the
ALASKAN TRADE

• •

THE BRADNER COMPANY

ESTABLISHED 1896

MANUFACTURERS

HEADQUARTERS FOR

EGGS

CHEESE

Cable Address
EMERSON
P. O. Box 1846
Telephone Elliott 0708

Established
1888

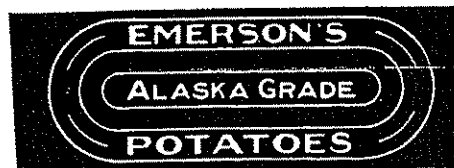
CODES
Western Union
A. B. C. 5th Edition
Modern Economy

H. S. Emerson Co., Inc.

Wholesale Fruits and Vegetables

1117 Western Avenue

SEATTLE, WASH.



**NO FORK HOLES, CUTS, BLIGHT,
SCAB OR DIRT**

When You Buy Emerson's Alaska Grade
Potatoes You Are Not Paying Freight on
Dirt—Every Potato Is Good

We Own Our Own Orchard. Can Ship
Apples and Pears, Car Lots or Less.

We Have Our Own Vegetable Farm—All
Vegetables Fresh From the Ground Day of
Shipment.

WE SOLICIT YOUR BUSINESS



Look for the
RED LINE
'round the top!



Straight-Line Light Rubbers

You can tell the genuine "Hi-Press" Boots at a glance—they always have that **RED LINE** 'round the Top.

Worn by millions for their better service—sold and recommended by 65,000 dealers.

Save money on your year's bills by insisting on the footwear with the **RED LINE** 'round the Top.

THE B. F. GOODRICH RUBBER COMPANY
 Seattle—113 King Street

Goodrich
HI-PRESS
Rubber Footwear

Olympic Fur Co.

Flynn Brothers



*Seattle's Foremost and
Up-to-Date*

FUR DEALERS

Alaska Business Particularly Solicited, Being Old Alaskans
Ourselves



**Manufacturing, Remodeling
Storage**

Highest Class Workmanship

Raw Furs Wanted at All Times



408 University Street

Seattle, U. S. A.

PHONE ELLIOTT 2964



EDWIN J. BROWN, D. D. S.

SEATTLE'S LEADING DENTIST



Today, we are able to insert synthetic fillings so perfectly that one cannot distinguish them from the natural tooth.

Today, gold fillings cost one-half what they cost twenty years ago, because of time saving methods.

Today, we extract teeth without pain and without bad after effects.

Today, we guarantee our work.

Today, we know that a mouth with bad teeth is a breeding place for organic germ life that brings disease to the organism of the human body.

If you take care of your teeth, they will take care of you.



Corner First Avenue and Columbia

Just Across the Street From His Old Location

Entrance 106 Columbia

Phone Main 3640

Offices Established More Than 30 Years

Open Evenings Until 8 P. M. Sundays
Until 4 P. M. For People Who Work.

Modern Science in Dentistry



By Edwin J. Brown, D. D. S.

In Dentistry as in all other things, from modern discoveries great principles have evolved.

Today, we are able to save teeth that would have been extracted ten years ago.

Today, by advanced methods in artificial teeth making, we are able to guarantee a set of teeth to fit and stay in place so that a person can eat with them.

Today, when a sufficient number of teeth remain in the mouth, we can supply missing teeth with self-cleansing bridgework; this is the most durable, painless and beautiful work known to modern Dental science.

Corner First Avenue and Columbia

Just Across the Street From His Old Location

Entrance 106 Columbia

Phone Main 3640

OFFICES ESTABLISHED MORE THAN 30 YEARS

Open Evenings Until 8 P. M. Sundays Until 4 P. M. for People Who Work.

PETKOVITS FUR COMPANY

ESTABLISHED 1886

Manufacturers of
Every
Description of

FURS

Fur Garments
Fur Caps and Hats
Fur Novelties

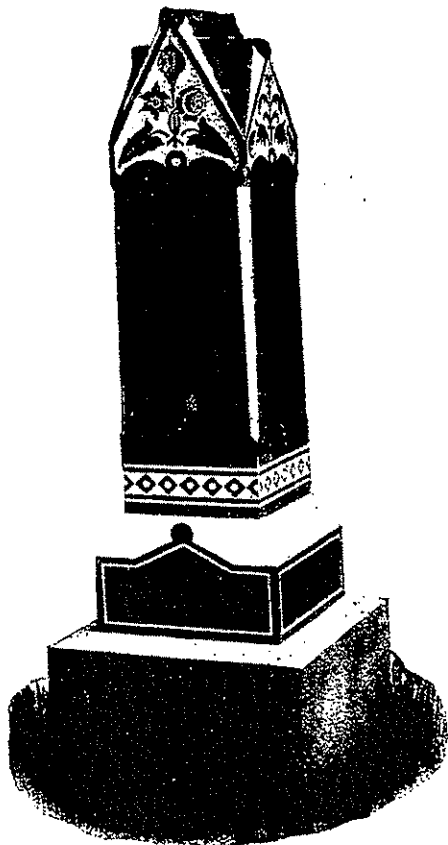
IMPORTERS OF SKINS

Highest cash price paid for raw furs. Furs made up or remodeled to order. Patrons need have no hesitancy in bringing or sending us raw furs to make up, as we positively guarantee to use the furs sent us and return all-fur not actually used in the making.

SEALSKIN GARMENTS A SPECIALTY
SATISFACTION GUARANTEED

602 PINE STREET

SEATTLE, WASH.



PUGET SOUND MARBLE AND GRANITE CO.

2000-2006 First Ave., Seattle, Wash.



Marble and Granite
Monuments
CROSSES, HEADSTONES



Write for illustrations and prices and a
list of our satisfied Alaska customers.

Corrected Automobile List 98 Per Cent Efficient

You can now secure an accurate list, classified by districts, by makes of car or numerically. This is a list which will bring you results from your direct mail advertising campaign.

You can reach the people you want to reach: owners of high priced cars or owners of Fords, exclusive neighborhoods or farmers. Communicate with us.

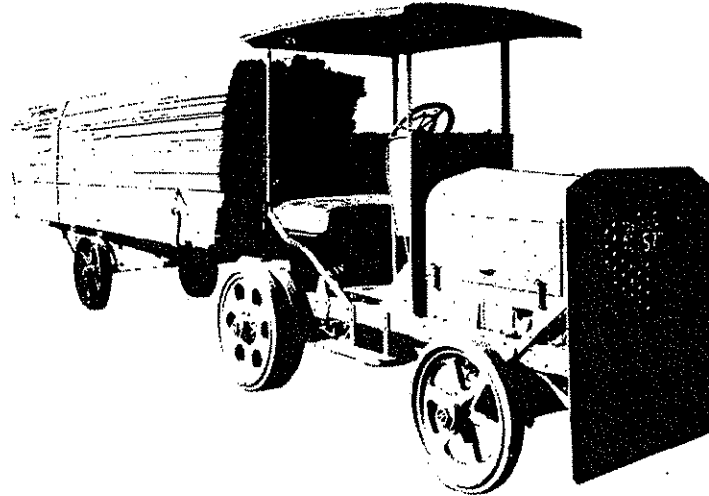
R. L. POLK & CO., Inc.

Phone Main 1626.

71 Columbia St., Seattle

Hood Super-Lumber Tractor

AN OVER-POWERED TRACTOR



HOOD TRACTOR MODEL "SL"

The Hood Super-Lumber Tractor is heavier and faster than the "Model CI". It was designed and built from the ideas of prominent lumbermen all over the world, who saw the necessity of a faster and more powerful job.

"SPEED DOES IT"

This Tractor does the work of expensive carriers and at a lower cost. It has tremendous power and a larger range of speeds. It will run from two to twenty miles per hour.

It is built to stand up and decrease the ever-expensive overhauling of the lighter tractors. One or more of these larger tractors in your yard for your heavier work will solve your problem.

Detailed specifications on back of sheet.

Hood Tractor Company

SEATTLE, WASHINGTON

3227-3229 FIRST AVENUE SOUTH

TELEPHONE ELIOT 0741

POLK'S
ALASKA-YUKON
 (Seattle Department)
CLASSIFIED BUSINESS
DIRECTORY
1923-24

*Air Compressors

PERINE MACHINERY CO 209 1st Av S (See p 621) Seattle

*Air Tight Heaters

LANG F S MFG CO 2756 1st Av S (See pp 628-629) Seattle

*Analytical Chemists

NORTHWEST TESTING LABORATORIES, Northwest
 Testing Bldg, 2113 3d Av (See pp 632-633) Seattle

*Apples—Wholesale

EMERSON H S CO INC 1117 Western Av (See p 645) Seattle

*Babbitt Metal

ROEBLING'S JOHN A SONS CO OF CALIFORNIA
 900 1st Av S (See p 639) Seattle

*Baled Hay

GALBRAITH & CO Galbraith Dock (See pp 600-601) Seattle

*Band Instruments

SHERMAN CLAY & CO 3d Av at Pine (See p 608) Seattle

*Banks and Bankers

SEATTLE NATIONAL BANK se cor 2d Av at Columbia
 (See pp 598-599) Seattle

*Beverages—Wholesale

SCHWABACHER BROS & CO INC 300-308 Occidental
 Av (See p 623) Seattle

*Boilers and Engines

BOWLES COMPANY 101-3-5 Jackson (See p 635) Seattle
 PERINE MACHINERY CO 209 1st Av S (See p 621) Seattle
 SEATTLE BOILER WORKS 1128-32 W 45th (See p 610)
 Seattle

***Bolts**

ROEBLING'S JOHN A SONS CO OF CALIFORNIA
900 1st Av S (See p 639) Seattle

***Bonds**

NORTHERN BOND & MORTGAGE CO 310 Columbia
(See p 596) Seattle
SEATTLE NATIONAL BANK se cor 2d Av at Columbia
(See pp 598-599) Seattle

***Bookbinders**

LOWMAN & HANFORD CO 1st Av and Cherry and 1514
3d Av (See pp 614-615) Seattle
TRICK & MURRAY 1005 2d Av (See pp 618-619) Seattle

***Boots—Rubber**

GOODRICH B F RUBBER CO 113 King (See p 646) Seattle

***Bridgework—Dental**

BROWN EDWIN J 106 Columbia (See pp 648-649) Seattle

***Builders Hardware**

WILLIAMS O B CO 1943 1st Av S (See pp 624-625) Seattle

***Building Material**

COLBY & DICKINSON INC 426 White-Henry-Stuart Bldg
(See pp 605-607) Seattle
CROWE F T & CO 508 Westlake Av N (See pp 602-603) Seattle
EHRlich-HARRISON CO 35 Hanford (See pp 630-631) Seattle
GALBRAITH & CO Galbraith Dock (See pp 600-601) Seattle

***Butter, Eggs and Cheese—Wholesale**

BRADNER COMPANY THE 1209 Western Av (See p 644) Seattle

***Buttermilk**

KRISTOFERSON A INC 1300 Rainier Av (See p 640) Seattle

***Camp Furniture**

SEATTLE TENT & AWNING CO 717 1st Av (See p 597) Seattle

***Camp Stoves**

LANG F S MFG CO 2756 1st Av S (See pp 628-629) Seattle

***Candy Manufacturers—Wholesale**

SCHWABACHER BROS & CO INC 300-308 Occidental Av
(See p 623) Seattle

***Cannery Chains**

LINK-BELT, MEESE & GOTTFRIED CO 820-824 1st
Av S (See p 616) Seattle

***Cannery Machinery**

WRIGHT & SMITH MACHINE WORKS foot of King
(See p 617) Seattle

***Cannery Supplies**

BOWLES COMPANY 101-3-5 Jackson (See p 635) Seattle
FAIRBANKS MORSE & CO 550 1st Av S (See p 634) Seattle

***Caps—Fur**

PETKOVITS FUR CO 602 Pine (See p 650) Seattle

***Caterpillar Tractors**

HOLT MFG CO 430 Pioneer Bldg (See p 605) Seattle

***Cement**

CROWE F T & CO 508 Westlake Av N (See p 602-603) Seattle

***Chains**

LINK-BELT, MEESE & GOTTFRIED CO 820-824 1st
Av S (See p 616) Seattle

***Cheese—Wholesale**

BRADNER COMPANY THE 1209 Western Av (See p 644)
Seattle

***Chemists**

NORTHWEST TESTING LABORATORIES Northwest
Testing Bldg, 2113 3d Av (See pp 632-633) Seattle

***Cigars and Tobacco—Wholesale**

SCHWABACHER BROS & CO INC 300-308 Occidental
Av (See p 623) Seattle

***Combined Harvesters**

HOLT MFG CO 430 Pioneer Bldg (See p 605) Seattle

***Cottage Cheese**

KRISTOFERSON A INC 1300 Rainier Av (See p 640) Seattle

***Creameries**

BRADNER COMPANY THE 1209 Western Av (See p 644)
Seattle

***Dairies**

KRISTOFERSON A INC 1300 Rainier Av (See p 640) Seattle

***Dairy Foods**

CENTENNIAL MILL CO 504-6 Central Bldg (See p 643)
Seattle

***Dehydrated Foods**

SEATTLE TENT & AWNING CO 717 1st Av (See p 597)
Seattle

***Delco Light Products**

MODERN APPLIANCE CO 508 1st Av S (See p 620) Seattle

***Dentists**

BROWN EDWIN J 106 Columbia (See pp 648-649) Seattle

***Dock, Warehouse and Lumber Tractors**

HOOD TRACTOR CO 3227-29 1st Av S (See p 652) Seattle

***Drawing Materials**

**LOWMAN & HANFORD CO 1st Av and Cherry and 1514
3d Av (See pp 614-615) Seattle**

TRICK & MURRAY 1005 2d Av (See pp 618-619) Seattle

***Eggs—Wholesale**

**BRADNER COMPANY THE 1209 Western Av (See p
644) Seattle**

***Electric Motors and Dynamos**

FAIRBANKS MORSE & CO 550 1st Av S (See p 634) Seattle

***Electricians Supplies**

CRAGIN & CO 932 1st Av S (See p 636) Seattle

***Electrotypes**

ART CRAFT CO INC 1010 1st Av (See p 611) Seattle

***Elevator Fish Cutters**

**WRIGHT & SMITH MACHINE WORKS foot of King
(See p 617) Seattle**

***Enamels**

FULLER W P & CO 167-173 Jackson (See p 626) Seattle

***Engineers**

**NORTHWEST TESTING LABORATORIES, Northwest
Testing Bldg, 2113 3d Av (See pp 632-633) Seattle**

**POWER PLANT ENGINEERING CO 1933 5th Av (See p
604) Seattle**

***Engines—Marine and Stationary**

FAIRBANKS MORSE & CO 550 1st Av S (See p 634) Seattle

***Engravers**

ART CRAFT CO INC 1010 1st Av (See p 611) Seattle

**LOWMAN & HANFORD CO 1st Av and Cherry and 1514
3d Av (See pp 614-615) Seattle**

TRICK & MURRAY 1005 2d Av (See pp 618-619) Seattle

***Exhaust Boxes**

**WRIGHT & SMITH MACHINE WORKS foot of King
(See p 617) Seattle**

***Extracting—Teeth**

BROWN EDWIN J 106 Columbia (See pp 648-649) Seattle

***Extracts**

RICHARDSON & HOLLAND INC 518 1st Av S (See p 641) Seattle

***Farm Lighting Systems**

MODERN APPLIANCE CO 508 1st Av S (See p 620) Seattle

***Feed Mill Products**

CENTENNIAL MILL CO 504-6 Central Bldg (See p 643) Seattle

***Fireproof Hotels**

HOTEL FRYE sw cor 3d Av S and Yesler Way (See p 627) Seattle

***Fish Cutters—Elevator**

WRIGHT & SMITH MACHINE WORKS foot of King (See p 617) Seattle

***Fish Elevators and Conveyors**

LINK-BELT, MEESE & GOTTFRIED CO 820-824 1st Av S (See p 616) Seattle

***Flooring**

EHRlich-HARRISON CO 35 Hanford (See pp 630-631) Seattle

***Flotation Tests**

NORTHWEST TESTING LABORATORIES, Northwest Testing Bldg, 2113 3d Av (See pp 632-633) Seattle

***Flour—Wholesale**

SCHWABACHER BROS & CO INC 300-308 Occidental Av (See p 623) Seattle

***Flour Mills**

CENTENNIAL MILL CO 504-6 Central Bldg (See p 643) Seattle

***Food Products**

RICHARDSON & HOLLAND INC 518 1st Av S (See p 641) Seattle

***Foreign Exchange**

SEATTLE NATIONAL BANK se cor 2d Av at Columbia (See pp 598-599) Seattle

***Foundry Supplies**

CRAGIN & CO 932 1st Av S (See p 636) Seattle

***Fruits—Wholesale**

EMERSON H S CO INC 1117 Western Av (See p 645) Seattle

***Fuel Oil Burners**

POWER PLANT ENGINEERING CO 1933 5th Av (See p 604) Seattle

***Fur Manufacturers**

OLYMPIC FUR CO 408 University (See p 647) Seattle

***Fur Novelties**

PETKOVITS FUR CO 602 Pine (See p 650) Seattle

***Furs**

OLYMPIC FUR CO 408 University (See p 647) Seattle
 PETKOVITS FUR CO 602 Pine (See p 650) Seattle

***Furs—Remodeling**

OLYMPIC FUR CO 408 University (See p 647) Seattle

***Glass**

ELMER & MOODY CO INC 2229 1st Av Seattle

***Goodrich "Hi-Press" Footwear**

GOODRICH B F RUBBER CO 113 King (See p 646) Seattle

***Granite and Marble Works**

PUGET SOUND MARBLE & GRANITE CO 2000-2006 1st Av (See p 651) Seattle

***Grave Markers**

PUGET SOUND MARBLE & GRANITE CO 2000-2006 1st Av (See p 651) Seattle

***Grocers—Wholesale**

SCHWABACHER BROS & CO INC 300-308 Occidental Av (See p 623) Seattle

***Half Tones**

ART CRAFT CO INC 1010 1st Av (See p 611) Seattle

***Hand Saws**

SIMONDS SAW & STEEL CO 410 Occidental Av (See p 638) Seattle

***Hardware—Wholesale**

CASTLE A M & CO OF WASHINGTON 32 W Connecticut (See p 637) Seattle

***Hardwoods**

EHRlich-HARRISON CO 35 Hanford (See pp 630-631) Seattle

***Hay and Grain**

GALBRAITH & CO Galbraith Dock (See pp 600-601) Seattle

***Headstones**

**PUGET SOUND MARBLE & GRANITE CO 2000-2006 1st
Av (See p 651) Seattle**

***"Hi-Press" Boots**

GOODRICH B F RUBBER CO 113 King (See p 646) Seattle

***Hotels**

**HOTEL FRYE sw cor 3d Av S and Yesler Way (See p 627)
Seattle**

***Importers—Food Products**

**RICHARDSON & HOLLAND INC 518 1st Av S (See p
641) Seattle**

***Importers—Skins**

PETKOVITS FUR CO 602 Pine (See p 650) Seattle

***Industrial Tractors**

**HOLT MANUFACTURING CO 430 Pioneer Bldg (See p
605) Seattle**

HOOD TRACTOR CO 3227-29 1st Av S (See p 652) Seattle

***Insurance—Fire and Marine**

**NORTHERN BOND & MORTGAGE CO 310 Columbia
(See p 596) Seattle**

***Investment Bankers**

**NORTHERN BOND & MORTGAGE CO 310 Columbia
(See p 596) Seattle**

***Iron and Steel—Wholesale**

**CASTLE A M & CO OF WASHINGTON 32 W Connecti-
cut (See p 637) Seattle**

***Iron and Steel Pipe**

**HYDRAULIC SUPPLY MFG CO 4300 8th Av S (See p
622) Seattle**

***Jersey Butter**

**BRADNER COMPANY THE 1209 Western Av (See p 644)
Seattle**

***Kitchen Cabinets**

WILLIAMS O B CO 1943 1st Av S (See pp 624-625) Seattle

***Knives—Machine**

**SIMONDS SAW & STEEL CO 410 Occidental Av (See p
638) Seattle**

***Kodaks**

LOWMAN & HANFORD CO 1st Av and Cherry and 1514
3d Av (See pp 614-615) Seattle
TRICK & MURRAY 1005 2d Av (See pp 618-619) Seattle

***Laboratories**

NORTHWEST TESTING LABORATORIES, Northwest
Testing Bldg, 2113 3d Av (See pp 632-633) Seattle

***Lighting Plants**

MODERN APPLIANCE CO 508 1st Av S (See p 620) Seattle

***Lime, Plaster and Cement**

GALBRAITH & CO Galbraith Dock (See pp 600-601) Seattle

***Locomotives**

HOFIUS STEEL & EQUIPMENT CO L C Smith Bldg
(See pp 612-613) Seattle

***Logging Supplies**

CASTLE A M & CO OF WASHINGTON 32 W Connecti-
cut (See p 637) Seattle

***Lumber, Dock and Warehouse Tractors**

HOOD TRACTOR CO 3227-29 1st Av S (See p 652) Seattle

***Lumber Manufacturers and Dealers**

COLBY & DICKINSON INC 426 White-Henry-Stuart Bldg
(See pp 606-607) Seattle
EHRlich-HARRISON CO 35 Hanford (See pp 630-631)
Seattle
ELMER & MOODY CO INC 2229 1st Av
Seattle

***Machine Knives**

SIMONDS SAW & STEEL CO 410 Occidental Av (See p
638) Seattle

***Machinery**

LINK-BELT, MEESE & GOTTFRIED CO 820-824 1st
Av S (See p 616) Seattle
PERINE MACHINERY CO 209 1st Av S (See p 621) Seattle
POWER PLANT ENGINEERING CO 1933 5th Av (See
p 604) Seattle
WRIGHT & SMITH MACHINE WORKS foot of King
(See p 617) Seattle

***Machinists Supplies**

CRAGIN & CO 932 1st Av S (See p 636) Seattle

***Marble and Granite Works**

PUGET SOUND MARBLE & GRANITE CO 2000-2006 1st
Av (See p 651) Seattle

***Mechanical Engineers**

POWER PLANT ENGINEERING CO 1933 5th Av (See p 604) Seattle

***Mill and Mine Supplies**

FAIRBANKS MORSE & CO 550 1st Av S (See p 634) Seattle

***Mining and Logging Supplies**

CASTLE A M & CO OF WASHINGTON 32 W Connecticut (See p 637) Seattle
HOFIUS STEEL & EQUIPMENT CO L C Smith Bldg (See pp 612-613) Seattle

***Monuments**

FUGET SOUND MARBLE & GRANITE CO 2000-2006 1st Av (See p 651) Seattle

***Mortgage Loans**

NORTHERN BOND & MORTGAGE CO 310 Columbia (See p 596) Seattle

***Mosquito Tents**

SEATTLE TENT & AWNING CO 717 1st Av (See p 597) Seattle

***Mouldings**

COLBY & DICKINSON INC 426 White-Henry-Stuart Bldg (See pp 606-607) Seattle
ELMER & MOODY CO INC 2229 1st Av Seattle
WILLIAMS O B CO 1943 1st Av S (See pp 624-625) Seattle

***Municipal Bonds**

NORTHERN BOND & MORTGAGE CO 310 Columbia (See p 596) Seattle

***Music and Musical Merchandise**

SHERMAN CLAY & CO 3d Av at Pine (See p 608) Seattle

***Newspapers**

POST-INTELLIGENCER THE 600 Pine (See p 609) Seattle

***Office Supplies**

LOWMAN & HANFORD CO 1st Av and Cherry and 1514 3d Av (See pp 614-615) Seattle
TRICK & MURRAY 1005 2d Av (See pp 618-619) Seattle

***Oil Burners**

POWER PLANT ENGINEERING CO 1933 5th Av (See p 604) Seattle

***Orchestrations**

SHERMAN CLAY & CO 3d Av at Pine (See p 608) Seattle

***Ore Testing**

NORTHWEST TESTING LABORATORIES, Northwest
Testing Bldg, 2113 3d Av (See pp 632-633) **Seattle**

***Out Door Clothing**

SEATTLE TENT & AWNING CO 717 1st Av (See p 597)
Seattle

***Paint Manufacturers**

FULLER W P & CO 167-173 Jackson (See p 626) **Seattle**

***Paints, Oils and Varnishes**

CROWE F T & CO, 508 Westlake Av N (See p 602-603) **Seattle**
FULLER W P & CO, 167-173 Jackson (See p 626) **Seattle**

***Panels—Built-Up**

EHRlich-HARRISON CO 35 Hanford (See pp 630-631)
Seattle

***Panels—Fir and Hardwood**

ELMER & MOODY CO INC 2229 1st Av **Seattle**

***Pianos**

SHERMAN CLAY & CO 3d Av at Pine (See p 608) **Seattle**

***Pipe and Fittings**

BOWLES COMPANY 101-3-5 Jackson (See p 635) **Seattle**
CASTLE A M & CO OF WASHINGTON 32 W Connecti-
cut (See p 637) **Seattle**
HYDRAULIC SUPPLY MFG CO 4300 8th Av S (See p
622) **Seattle**

***Planer Knives**

SIMONDS SAW & STEEL CO 410 Occidental Av (See p
638) **Seattle**

***Plate and Window Glass**

FULLER W P & CO 167-173 Jackson (See p 626) **Seattle**

***Platers and Polishers Supplies**

CRAGIN & CO 932 1st Av S (See p 636) **Seattle**

***Player Pianos**

SHERMAN CLAY & CO 3d Av at Pine (See p 608) **Seattle**

***Potatoes—Wholesale**

EMERSON H S CO INC 1117 Western Av (See p 645) **Seattle**

***Poultry and Dairy Foods**

CENTENNIAL MILL CO 504-6 Central Bldg (See p 643)
Seattle
GALBRAITH & CO Galbraith Dock (See pp 600-601) **Seattle**

***Power Transmission Machinery**

**LINK-BELT, MEESE & GOTTFRIED CO 820-824 1st
Av S (See p 616) Seattle**

***Printers**

**LOWMAN & HANFORD CO 1st Av and Cherry and 1514
3d Av (See p 614-615) Seattle**
TRICK & MURRAY 1005 2d Av (See pp 618-619) Seattle

***Produce—Wholesale**

EMERSON H S CO INC 1117 Western Av (See p 645) Seattle

***Publishers**

POST-INTELLIGENCER THE 600 Pine (See p 609) Seattle

***Pumps**

FAIRBANKS MORSE & CO 550 1st Av S (See p 634) Seattle

***Railway Equipment**

**HOFIUS STEEL & EQUIPMENT CO L C Smith Bldg
(See pp 612-613) Seattle**

***Ranges**

LANG F S MFG CO 2756 1st Av S (See pp 628-629) Seattle

***Raw Furs**

OLYMPIC FUR CO 408 University (See p 647) Seattle
PETKOVITS FUR CO 602 Pine (See p 650) Seattle

***Refuse Burners**

**SEATTLE BOILER WORKS 1128-32 W 45th (See p 610)
Seattle**

***Riveted Steel Pipe**

**HYDRAULIC SUPPLY MFG CO 4300 8th Av S (See p
622) Seattle**

***Roofing Material**

**COLBY & DICKINSON INC 426 White-Henry-Stuart Bldg
(See pp 606-607) Seattle**
GALBRAITH & CO Galbraith Dock (See pp 600-601) Seattle

***Rope**

**ROEBLING'S JOHN A SONS CO OF CALIFORNIA
900 1st Av S (See p 639) Seattle**

***Rubbers**

GOODRICH B F RUBBER CO 113 King (See p 646) Seattle

***Safe Deposit Boxes**

**SEATTLE NATIONAL BANK se cor 2d Av at Columbia
(See pp 598-599) Seattle**

***Sash and Doors**

ELMER & MOODY CO INC 2229 1st Av Seattle
 WILLIAMS O B CO 1943 1st Av S (See pp 624-625) Seattle

***Savings Banks**

SEATTLE NATIONAL BANK se cor 2d Av at Columbia Seattle
 (See pp 598-599)

***Saw Manufacturers**

SIMONDS SAW & STEEL CO 410 Occidental Av (See p Seattle
 638)

***Screens**

WILLIAMS O B CO 1943 1st Av S (See pp 624-625) Seattle

***Shafting, Pulleys and Belting**

LINK-BELT, MEESE & GOTTFRIED CO 820-824 1st Seattle
 Av S (See p 616)
 PERINE MACHINERY CO 209 1st Av S (See p 621) Seattle

***Sheet Metal Specialties**

LANG F S MFG CO 2756 1st Av S (See pp 628-629) Seattle

***Sheet Music**

SHERMAN CLAY & CO 3d Av at Pine (See p 608) Seattle

***Shingles**

COLBY & DICKINSON INC 426 White-Henry-Stuart Bldg Seattle
 (See pp 606-607)

***Shovels**

ROEBLING'S JOHN A SONS CO OF CALIFORNIA 900 Seattle
 1st Av S (See p 639)

***Smoke Stacks**

SEATTLE BOILER WORKS 1128-32 W 45th (See p 610) Seattle

***Spices—Wholesale**

RICHARDSON & HOLLAND INC 518 1st Av S (See p Seattle
 641)

***Stacks**

HYDRAULIC SUPPLY MFG CO 4300 8th Av S (See p Seattle
 622)

***Stationery**

LOWMAN & HANFORD CO 1st Av and Cherry and 1514 Seattle
 3d Av (See pp 614-615)
 TRICK & MURRAY 1005 2d Av (See pp 618-619) Seattle

***Steam, Gas and Electric Hoists**

PERINE MACHINERY CO 209 1st Av S (See p 621) Seattle

***Steamboat and Steamship Lines**

ALASKA STEAMSHIP CO Pier 2 (See pp 458-459) Seattle

***Stereotypers**

ART CRAFT CO INC 1010 1st Av (See p 611) Seattle

***Storage—Furs**

OLYMPIC FUR CO 408 University (See p 647) Seattle

***Store Fronts**

WILLIAMS O B CO 1943 1st Av S (See pp 624-625) Seattle

***Store Lighting Systems**

MODERN APPLIANCE CO 508 1st Av S (See p 620) Seattle

***Stoves and Ranges**

LANG F S MFG CO 2756 1st Av S (See pp 628-629) Seattle

***Switch Material**

HOFIUS STEEL & EQUIPMENT CO L C Smith Bldg
(See pp 612-613) Seattle

***Tanks**

HYDRAULIC SUPPLY MFG CO 4300 8th Av S (See p
622) Seattle

SEATTLE BOILER WORKS 1128-32 W 45th (See p 610)
Seattle

***Teas, Coffees and Spices—Wholesale**

RICHARDSON & HOLLAND INC 518 1st Av S (See p
641) Seattle

SCHWABACHER BROS & CO INC 300-308 Occidental
Av (See p 623) Seattle

***Teeth—Artificial**

BROWN EDWIN J 106 Columbia (See pp 648-649) Seattle

***Tents**

SEATTLE TENT & AWNING CO 717 1st Av (See p 597)
Seattle

***Tool Makers Supplies**

CRAGIN & CO 932 1st Av S (See p 636) Seattle

***Tools**

HOFIUS STEEL & EQUIPMENT CO L C Smith Bldg
(See pp 612-613) Seattle

PERINE MACHINERY CO 209 1st Av S (See p 621) Seattle

***Tractor Manufacturers**

HOLT MANUFACTURING CO 430 Pioneer Bldg (See p 605) Seattle

***Tractors**

HOLT MANUFACTURING CO 430 Pioneer Bldg (See p 605) Seattle

HOOD TRACTOR CO 3227-29 1st Av S (See p 652) Seattle

***Transportation**

ALASKA STEAMSHIP CO Pier 2 (See pp 458-459) Seattle

***Trust Companies**

SEATTLE NATIONAL BANK se cor 2d Av at Columbia (See pp 598-599) Seattle

***Valves and Fittings**

BOWLES COMPANY 101-3-5 Jackson (See p 635) Seattle

ROEBLING'S JOHN A SONS CO OF CALIFORNIA 900 1st Av S (See p 639) Seattle

***Varnishes**

CROWE F T & CO 508 Westlake Av N (See pp 602-603) Seattle

FULLER W P & CO 167-173 Jackson (See p 626) Seattle

***Vegetables—Wholesale**

EMERSON H S CO INC 1117 Western Av (See p 645) Seattle

***Victrolas**

SHERMAN CLAY & CO 3d Av at Pine (See p 608) Seattle

***Warehouse, Dock and Lumber Tractors**

HOOD TRACTOR CO 3227-29 1st Av S (See p 652) Seattle

***Water Systems**

BOWLES COMPANY 101-3-5 Jackson (See p 635) Seattle

MODERN APPLIANCE CO 508 1st Av S (See p 620) Seattle

***Water and Oil Tanks**

SEATTLE BOILER WORKS 1128-32 W 45th (See p 610) Seattle

***Waterproofings**

CROWE F T & CO 508 Westlake Av N (See pp 602-603) Seattle

***Whipping Cream**

KRISTOFERSON A INC 1300 Rainier Av (See p 640) Seattle

***Wire Cloth**

SEATTLE BOILER WORKS 1128-32 W 45th (See p 610) Seattle

***Wire Rope**

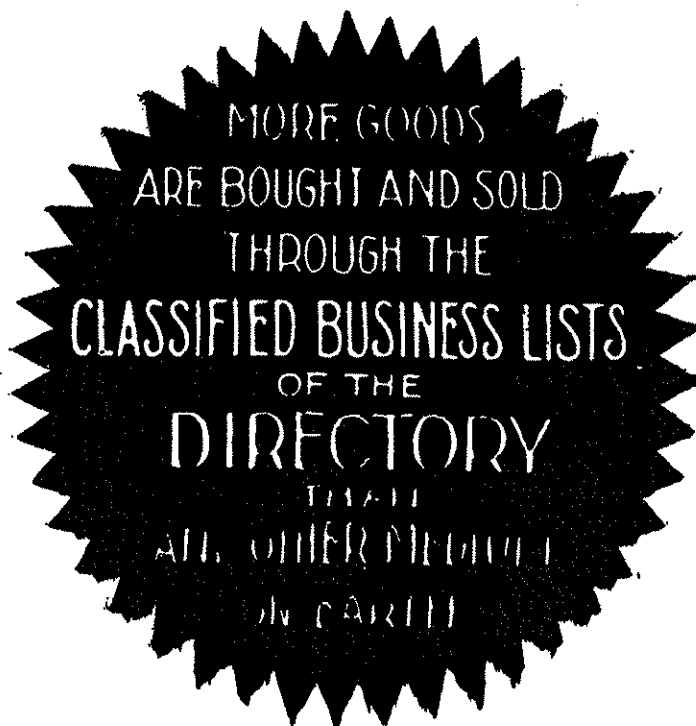
**ROEBLING'S JOHN A SONS CO OF CALIFORNIA 900
1st Av S (See p 639) Seattle**

***Wool Sleeping Bags**

**SEATTLE TENT & AWNING CO 717 1st Av (See p 597)
Seattle**

***Zinc Etchings**

ART CRAFT CO INC 1010 1st Av (See p 611) Seattle



**What
We
Can
Do
For
You**



ADDRESSING

We address envelopes and wrappers of every description, from your lists or our records.

MAILING LISTS

We compile authentic mailing lists of trades, professions and every line of business. All are guaranteed as to accuracy and delivery.

MULTIGRAPHING

We execute fac-simile typewritten letters promptly. A very superior grade of work.

FILLING IN

Matching perfectly the body of the letter.



R. L. Polk & Co., Inc.

71 Columbia Street

--

Seattle, Wash.

Association of North American Directory Publishers

Members of Directory and Reference Media Department of Associated Advertising Clubs of the World.

OFFICERS:

- J. Martin Gardner, Pres.**
76 Church Street,
Toronto, Canada.
- R. L. Polk, Jr., 1st V-Pres.**
431 Howard Street,
Detroit, Mich.
- H. A. Manning, 2nd V-Pres.**
33 Lyman Street,
Springfield, Mass.
- E. J. Loranger, Secy--Treas.**
524 Broadway, cor. Spring
St., New York City, N. Y.



TRUSTEES:

- R. L. Polk, Detroit.
R. H. Donnelley, Chicago.
W. L. Richmond, Yonkers.
Alvin E. Boyd, Reading.
R. W. Lovell, Montreal.
W. G. Torchiana, Phila.
W. O. Foote, Atlanta.
W. H. Lee, New Haven.
D. W. Bowman, Akron.
G. D'W. Marcy, Boston.

General Offices: 524-528 Broadway, cor Spring St., New York City

The Association of North American Directory Publishers is composed of reputable City Directory Publishers, organized for the general advancement of the Directory business. Any person, corporation or firm engaged in business as owner and publisher of a City Directory in the United States or Canada, who shall qualify as competent to gather information and compile a City Directory and furnish satisfactory references, is eligible to membership.

The objects of the Association are:

First. The advancement of the Directory business and the improvement of Directories by the interchange of ideas and the exchange of experienced employes.

Second. To provide protection to the public against fraudulent advertising schemes which operate under the name of Directories, and to drive unprincipled promoters of the same out of business.

Third. To provide permanent and profitable employment to competent, industrious and honest Directory canvassers and compilers.

Fourth. For the mutual protection and advancement of the established and prospective interests of all who may become members, by personal advice and assistance of members as may be mutually satisfactory, desirable or advisable, and by such other means as may, from time to time, be shown to be wise, proper and lawful.

All members of this association have subscribed to the following

STANDARDS OF PRACTICE

1. To consider, first, the interest of the user of the book.
2. To subscribe to and work for truth, honesty and accuracy in all departments.
3. To avoid confusing duplication of listings, endeavoring to classify every concern under such headings as best describe it, and to treat additional listings as advertising, to be charged for at regular rates.
4. To increase public knowledge of what directories and reference media contain; to study public needs and make directories and reference media to supply them; to revise and standardize methods and classifications so that what is wanted may be most easily found, and the directory and reference media be made to serve their fullest use as business and social reference books and directories of buyer to seller and seller to his market.
5. To decline any advertisement which has a tendency to mislead or which does not conform to business integrity.
6. To solicit subscriptions and advertising solely upon the merits of the publication.
7. To avoid misrepresentation by statement or inference regarding circulation, placing the test of reference publicity upon its accessibility to seekers as well as on the number of copies circulated.
8. To co-operate with approved organizations and individuals engaged in creative advertising work.
9. To avoid unfair competition.
10. To determine what is the highest and largest function of directories and reference media in public service and then to strive in every legitimate way to promote that function.

\$100.00 REWARD will be paid by the Association for the arrest and conviction of any person or persons engaged in publishing, collecting or canvassing for any fraudulent or "fake" Directory.