

City of Fairbanks

FAIRBANKS. Population estimated 1,200. The metropolis of the Tanana Valley, situated at the head of navigation on the branch of the Tanana River 280 miles south-east of the Yukon. It is the terminus of the Alaska Railroad, 360 miles from tidewater.



COAL MINE, FAIRBANKS, ALASKA

Fairbanks is in the heart of Alaska's richest mining district, and mining is the leading industry, with some of the best dredging and low-grade ground for hydraulic operations in the territory and the gold output is showing an increase at the present time. There are also some very promising quartz prospects in this territory as well as the working over many of the rich creeks which is now made possible by the operation of the Alaska Railroad, and the opening up of the Nenana and Healy River coal fields, enabling cheap fuel to be obtained.

It is also a supply and distributing point for the Tanana and Tolovana mining districts.

The Alaska Agricultural College and School of Mines is located here, and in connection with the Government Experimental Station is accomplishing a great deal of good in the promotion and growing of all classes of vegetables, hay and grains, and rendering much needed service of an educational and practical nature in the development of all branches of mining.

Fairbanks is an incorporated town with electric light and water companies, telephone service, long distance telegraph system and daily trains to the coast. It is also the terminus of the Stage Line for the celebrated Richardson Highway, over which trips are made from Fairbanks to Chitina the southern terminus, at a point on the Copper River and Northwestern Railroad, a distance of 310 miles in 36 hours.

It is a very interesting town to the tourist on account of historical associations, with an opportunity of seeing the diversified activities of the mining industry and is convenient to the big game country of the Mt. McKinley district.

City Officials

Mayor—Thos A Markquam

Chief of Police—Chas McDermott

Fire Chief—Arthur H Anderson

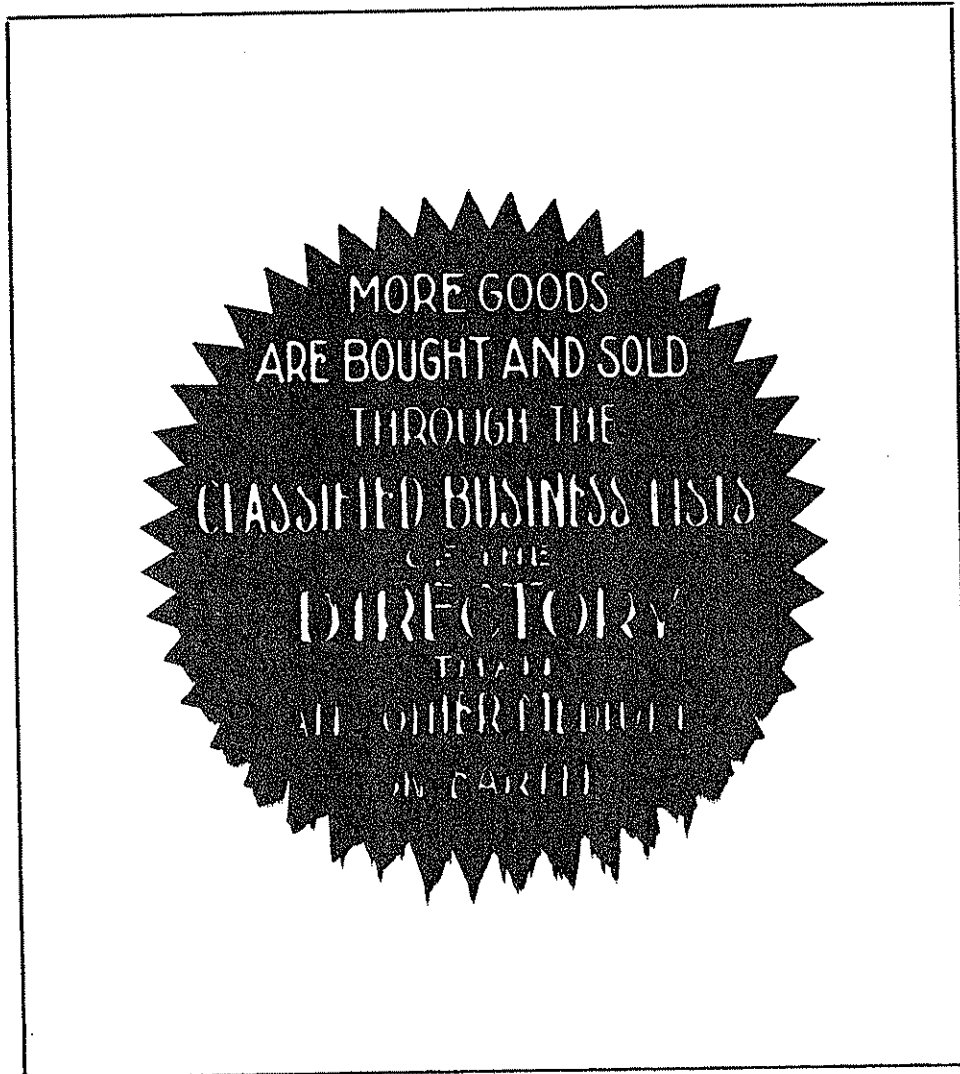
City Councilmen—August W Conradt, C Harry Woodward,
Thos C Youle, Frank Wood, Sigurd L Magnussen, E W
Taylor

Firm Abbreviations

ARC—Alaska Road Commission

NCCo of A—Northern Commercial Co of Alaska

The ARR—The Alaska Railroad



POLK'S
Buyers' Guide
of
Fairbanks, Alaska
1923-24



Representing the Business,
Commercial and Manufacturing
Interests of the City

GEO. HUTCHINSON
President

LUTHER C. HESS
Vice-President

E. H. STROECKER
Cashier

R. C. WOOD, Manager

The First National Bank

OF FAIRBANKS, ALASKA

Resources Over One Million Dollars

UNITED STATES DEPOSITARY
POSTAL SAVINGS DEPOSITARY

Depository For the Territory of Alaska

Statement of Condition as of June 30th, 1923

RESOURCES

Loans & Discounts.....	\$306,868.72
Overdrafts	605.96
United States Bonds.....	402,700.00
Bank Premises	10,740.88
Other Real Estate.....	2,204.00
Redemption Fund	2,500.00
Cash and Exchange.....	345,821.85
	<hr/>
	\$1,071,441.41

LIABILITIES

Capital, Surplus and Profits.....	\$110,232.88
Circulation	49,300.00
Other Liabilities	40,000.00
Deposits	871,908.53
	<hr/>
	\$1,071,441.41

Send Us Your Collections on Nenana, Healy, McKinley
Park, Hot Springs, Tanana, Livengood, Richardson,
Gilmore, Fox, Olnes and Chatineka

The Hotel Alaska

T. H. FOSTER, Propr.

Central Alaska's Leading Hotel



**MINING AND COMMERCIAL
MEN'S HEADQUARTERS**



In the Center of the Alaska Mining Belt
At the End of the Government Railroad

Richardson Trail, Tanana and Yukon River Routes



Hotel Bus Meets All Trains

FAIRBANKS

The Nordale Hotel

(TONY'S)

FAIRBANKS, ALASKA



Central Alaska's Popular Tourist Hotel

Known All Over the North

Where the Alaska Spirit and Real
Hospitality Awaits You

A. J. NORDALE, Propr.

The Samson Hardware Company

INCORPORATED

J. E. BARRACK, Manager

R. E. SHELDON, Director

**BEST EQUIPPED MACHINE SHOP
AND GARAGE IN ALASKA**

OUR SPECIALTIES

LANE MILLS
AMERICAN HOISTS

SAMSON

PICKS
SHOVELS
WHEELBARROWS
STEAM HOSE
WIRE ROPE
CARRIERS
HOISTS

GIANT POWDER
BULL DOG STEEL
QUARTZ MILLS
MILL REPAIRS
SHELF HARDWARE
HEAVY HARDWARE
MINING MACHINERY
STEAM POINTS
HYDRAULIC PIPE
STOVES AND RANGES
HAND DRILLS
RIFFLE PLATES

AGENTS

FORD MOTOR COMPANY
ELDRIDGE BUICK COMPANY
WILLYS-OVERLAND PACIFIC CO.

PHONE 101

FAIRBANKS

ALASKA

A. L. WILBUR

SHEET METAL WORKS



Bathroom in a Space Only Five Feet Square

PLUMBING and HEATING CONTRACTOR

PLUMBING SUPPLIES AND FIXTURES, PIPE,
VALVES AND FITTINGS

FAIRBANKS

ALASKA

AVAKOFF and BROWN

Diamonds,
Watches,
Jewelry
Clocks
Cut Glass
Silverware
Pickard China

The
**GOLDEN
HEART**
of
ALASKA
Watch and Jewelry
Repairing

Manufacturers
of
Nugget and Ivory
Jewelry
Ivory Souvenirs
Ivory Beads
Indian Moccasins

THE HOME OF ALASKAN JEWELRY
Fairbanks and Anchorage **ALASKA**

J. A. McINTOSH

R. T. KUBON

In the North Since 1898

TRY THE CORNER DRUG STORE FIRST

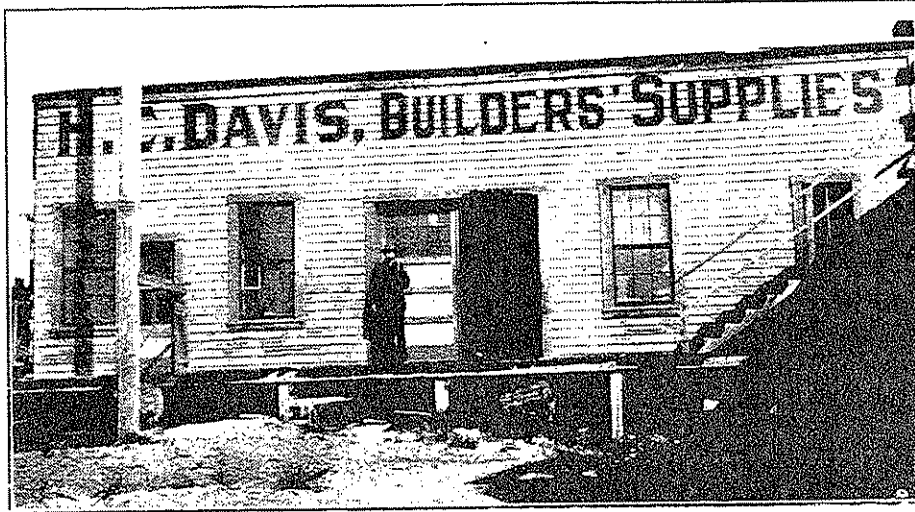
Cor. Cushman and Front Sts.

McINTOSH & KUBON
PRESCRIPTION DRUGGISTS

Known Throughout Alaska

FAIRBANKS, ALASKA

H. C. DAVIS Millwork



Sash, Doors, Mouldings, Cabinet Work, Interior Finish, Glass and
Builders' Hardware

General Building Supplies

FAIRBANKS

Fairbanks Clothing Co.

J. R. FOWLE, Propr.

Some of Principal Lines Featured—

KUPPENHEIMER CLOTHING
PATRICK'S (DULUTH), FULL LINE
FLORSHEIM SHOES
STETSON HATS
VASSAR UNDERWEAR

FAIRBANKS

ALASKA

FAIRVIEW HOTEL

GEO. M. SMITH, Mgr.

LEADING HOTEL IN FAIRBANKS

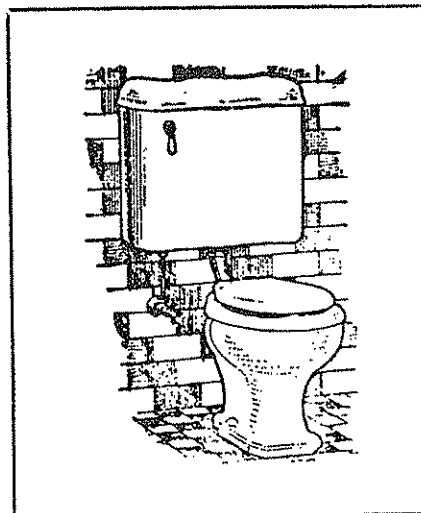


Steam Heat and Electric Light

FAIRBANKS

W. H. GILCHER

Heating
and
Plumbing
Contractor



Tin, Iron
and
Sheet Metal
Works

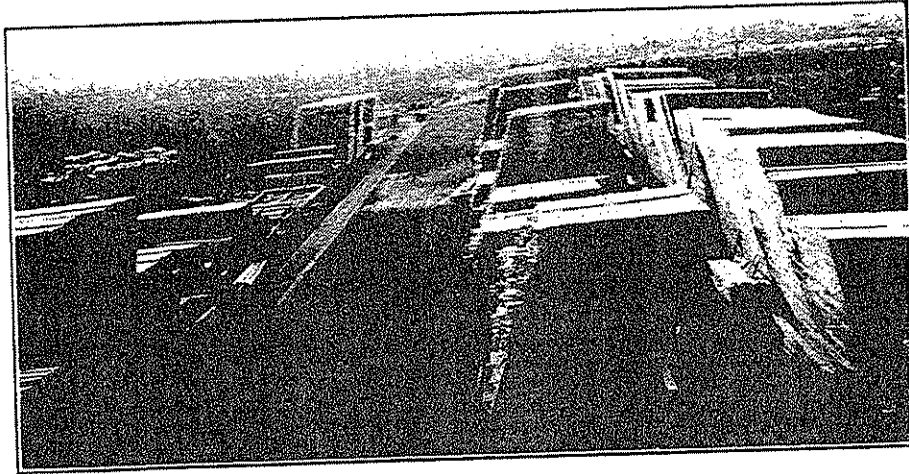
FAIRBANKS

ALASKA

Independent Lumber Co.

ROY W. FERGUSON, Mgr.

LUMBER MANUFACTURERS AND DEALERS



Spruce and Birch Lumber, Rough, Dressed and Finished

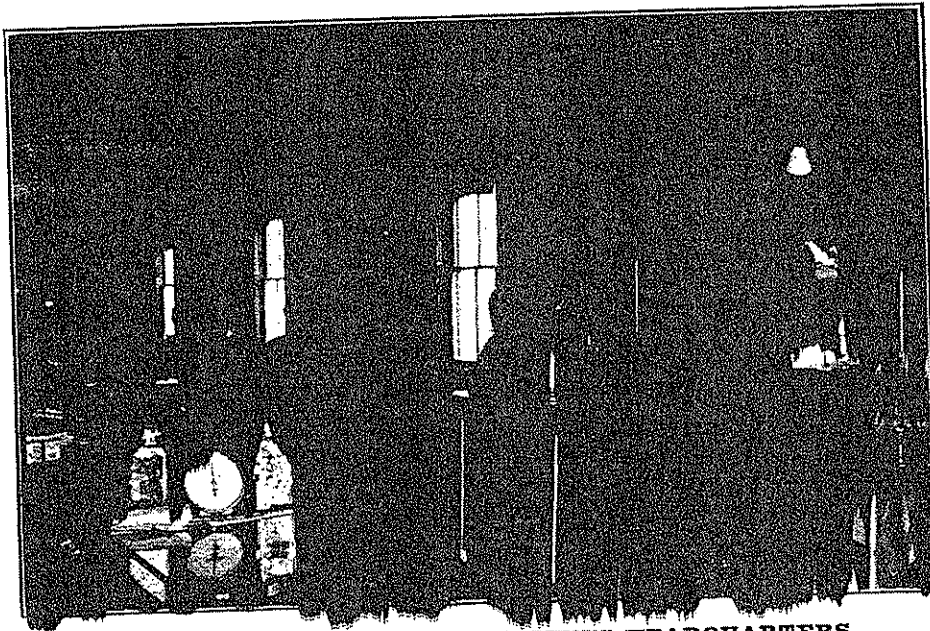
Complete House Bills Furnished

FAIRBANKS, ALASKA

INTERNATIONAL HOTEL

EMIL FOZZA, Propr.

OPPOSITE RAILROAD STATION



THE MINERS' AND RAILROAD MEN'S HEADQUARTERS
Employment Office in Connection

We Also Operate A General Merchandise Store.

FAIRBANKS, ALASKA

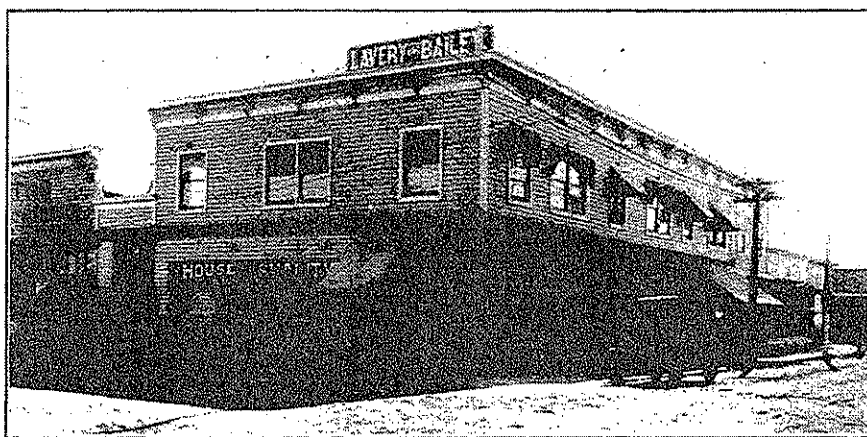
ROBERT LAVERY

HALLETT BAILEY

LAVERY & BAILEY

"The House of Quality"

WHOLESALE AND RETAIL GROCERS



PROVISIONS, FRUITS AND PRODUCE

Tinware, Crockery and Glassware Raw Furs Bought and Sold

FAIRBANKS, ALASKA

Fred Lewis Machine Shop

FRED LEWIS, Propr.

GENERAL MACHINE WORK

Automobile Repairing

Marine Engine Installing and Repairing

Forging, Oxy-Acetylene Welding

Mining Machinery and Repairs

Licensed Marine Engineer

GARDEN ISLAND

FAIRBANKS

THE E. H. MACK COMPANY

REAL ESTATE
FIRE AND LIFE INSURANCE
PUBLIC ACCOUNTANTS

SAFE DEPOSIT BOXES—NOTARY PUBLIC
BONDING COMPANY

Agents for The Richardson Highway Transportation Co.
Fairbanks to Chitina or Valdez

“TELL YOUR TROUBLES TO E. H.”

Second and Cushman St.

Fairbanks, Alaska

Headquarters of the Fairbanks Commercial Club

THE MODEL CAFE

The Delmonico of The North



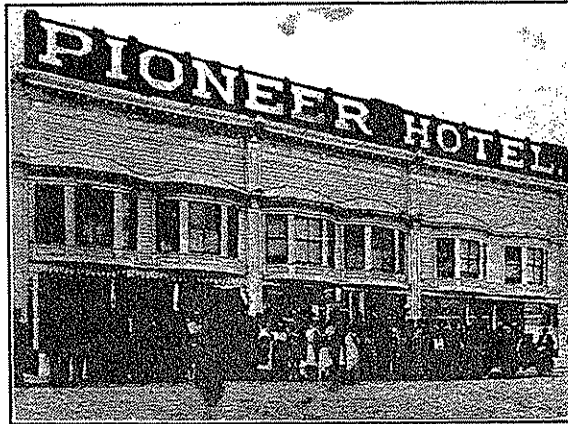
Our Best Advertisement Is People Scattered The World Over
Who Have Been Served at The Model

FAIRBANKS

PIONEER HOTEL

CHARLES BEAM, Propr.

Mining and Commercial Men's Headquarters



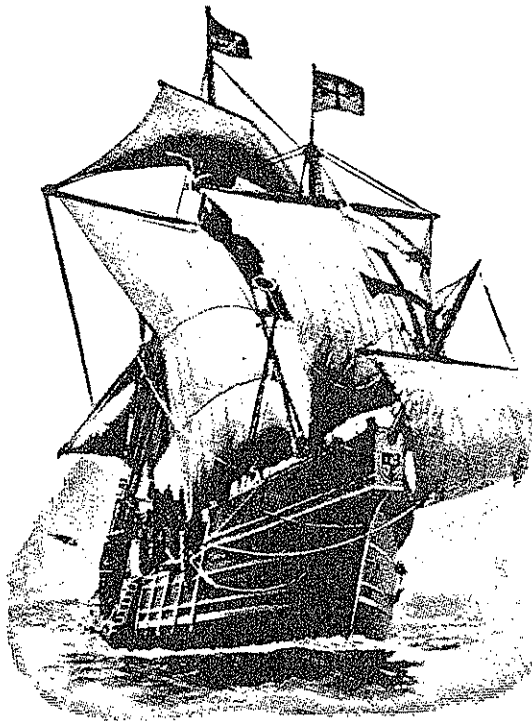
Hot and Cold Water

Steam Heat

Baths in Connection

FAIRBANKS

ALASKA



The PIRATE SHIP

Dry Goods, Crockery,
Glasswear, Hardware,
Ladies' Wears, Notions and
Shoes

Books, Stationery and
Everything You Want on
the Pirate Ship

JOHN O. ELLIS, Captain

FAIRBANKS

Everything Good and Cheap
On the Pirate Ship

RED CROSS DRUG STORE

DUNHAM & CLARK

Prescription Druggists
Opticians

DEALERS IN

Toilet Articles, Stationery, Confectionery,
Cigars and Tobacco
Postal Cards and Scenic Views

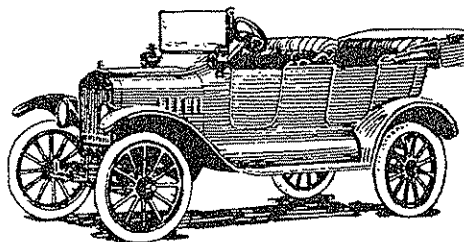
FAIRBANKS

ALASKA

Sheldon's Garage

R. E. SHELDON, Owner

Automobile
Repairs,
Supplies
and
Electricians



Tires,
Oils,
Greases
and
Service

Fords and Touring Cars For Hire

With or Without Driver

Agents for the Famous Dow Metal Pistons

FAIRBANKS

ALASKA

The Variety Store

PETER SCHUTZ, Propr.

HARDWARE TENTS—AWNINGS

GUNS AND AMMUNITION
TRAPPERS AND PROSPECTORS SUPPLIES
SPORTING GOODS

We Make Everything in Canvas Goods

FAIRBANKS

ALASKA

Corrected Automobile Lists

You can now secure an accurate list classified by districts, by makes of car or numerically. This is a list which will bring you results from your direct mail advertising campaign.

You can reach the people you want to reach: owners of high priced cars or owners of Fords, exclusive neighborhoods or farmers. Communicate with us.

POLK'S AUTOMOBILE BULLETIN is a publication which gives you up-to-the-minute information on licenses as issued. Get on the subscription list.

R. L. POLK & CO., Inc.

71 Columbia Street

SEATTLE

YOU CAN'T COVER

the world with a
postage stamp,
nor can you cover
the *Buying Public*
of your city
without proper
representation in
this Directory.

R. L. Polk & Co., Inc.

71 Columbia Street

SEATTLE, WASH.

Fairbanks Alphabetical List of Names

Aase Chris foremn The ARR
 Adami Walter baker
 Adole Stella
 Ahlburg Emma cook
**ALASKA AGRICULTURAL COLLEGE AND SCHOOL OF
 MINES, Charles E Bunnell, A M, Pres**
**ALASKA HOTEL THE, T H Foster Propr, Central Alaska's
 Leading Hotel, Mining and Commercial Men's Headquarters
 (See p 151)**
 Alaska Road Commission Ike P Taylor supt
 Aldridge John (Pendorgraft & Aldridge
 Alexander Jas miner
 Alexander Sandy lab
 Allison Amos E lab The ARR
 Allison Fred firemn Fairbanks Fire Dept
 Alton Thos lab Independent Lbr Co
 Alton Thos lab
 Amend H J cond The ARR
 Amerman Geo lab The ARR
 Ames Walter janitor The ARR
 Andersen Gus barber
 Anderson A lab Independent Lbr Co
 Anderson Andw v-pres Fairbanks Laundry Co Inc
 Anderson Andw lab The ARR
 Anderson Arthur H chief Fairbanks Fire Dept
 Anderson Chas miner
 Anderson Fred carp The ARR
 Anderson Florence
 Anderson Freeman wtr The ARR
 Anderson John farmer
 Anderson John lab The ARR
 Anderson John P lab The ARR
 Anderson Julius pres Fairbanks Laundry Co Inc
 Anderson L P carp The ARR
 Anderson Merwin E student
 Anderson Nels lab The ARR
 Anderson Oscar lab The ARR
 Andrews Arthur wtr Model Cafe
 Andrews John F lab The ARR
 Appleby Wm A clk Samson Hdw Co
 Appleton Wm lab The ARR
 Armour Frank lab The ARR
 Arnesen Arnie
 Arnesen Lena
 Arola Otto miner
 Attwood Henry W miner
 Attwood Merton miner
AVAKOFF HARRY (Avakoff & Brown) h Anchorage
**AVAKOFF & BROWN (Harry Avakoff, Jas V Brown), Dia-
 monds, Watches, Jewelry, Cut Glass, Silverware, Manu-
 facturers of Nugget and Ivory Jewelry, Beads and Souvenirs
 (See p 155)**

FAIRBANKS—Continued

Avakumoff Nicholas E lab The ARR

Bagle Leah Mrs

Bailey Elizabeth J (wid Danl H)

BAILEY HALLETT (Lavery & Bailey)

Baird Mary Mrs confr

Baker Forks mach NCCo of A

Baker Nick lab

Baker W lab Independent Lbr Co

Barley Hallett

Barnes Archie tmstr

BARRACK JAMES E, Pres-Mgr Samson Hardware Co h Garden Island**BARRACK JOHN, V-Pres Samson Hardware Co, h Garden Island**

Barron Archie lab The ARR

Bartlett Edw L tmstr

Bartlett Edw L jr student

Basoff Harry lab The ARR

Batchelor Foster miner

Batinich Anthony miner

Bayless Otto G lab ARC

BEAM CHARLES (Pioneer Hotel)

Beaton Hector lab

Beck Rose

Beckman Given

Beckman Gussie Mrs

Beegler Aline Mrs phys

Beegler Michl miner

Belden Grace Mrs opr Fairbanks Tel Co

Belios John lab The ARR

Bell Geo D foremn The ARR

Bellos Jas lab The ARR

Belmont Lulu

Beman R A carp The ARR

Bently Harry T cook Model Cafe

Berg Geo C farmer

Berg Harry lab The ARR

Berg Thorwald tlr

Berg Valentine lab

Berge Carl (Northern Hotel)

Bergeson Chas

Bergman Oscar F carp

Bergsen Chas lab

BERRY DARLYNE, Stenographer First National Bank

Berry R T wtr The ARR

Bieri Saml carp The ARR

Bigford Henry A lab The ARR

Bigney R E brkmn The ARR

Bilkey Max barber

Billson Dorothy sten

Billson Elizabeth sten

Birkbeck Jos W opr Alaska R R

Birkenes Ole lab The ARR
 Bishoprick Frank dep clk U S Dist Court
 Bittner Wm (Wm Bittner's Soda Water Works)
BITTNER'S WM SODA WATER WORKS (Wm Bittner),
Hires Root Beer and Ginger Ale, Fountain Syrups, Tanks,
Siphons and Sodas of All Flavors
 Bitzner Wm pntr
 Bjerremark Aug W
 Black May Mrs
 Blackburn Wm T chauf ARC
 Blakely E W
 Blaker Bessie (wid Julian) restr
 Blaker Bessie student
 Blaker Delma student
 Blaker Julian
 Bledsoe Herbt miner
 Bleecker Fred
 Bleier Alfonso lab The ARR
 Bloom Herman miner
 Bloomquist Andw miner
 Bodroga Michl farmer
 Boland Jas E lab ARC
 Bolton John cook
 Bondixea H E lab ARC
 Bonham J D carp The ARR
 Booth Edward baker The ARR
 Borak Paul brkmn The ARR
 Borell Lavern I sec to pres Alaska Agricultural College and
 School of Mines
 Borland Earl E whsemn ARC
 Bowers Jos lab The ARR
 Boyd Melville R U S Commissioner
 Boyd Richd lab ARC
 Boyle Frank wtr Model Cafe
 Brandt Marguerite A (wid Chas) opr Fairbanks Tel Co
 Bredlie Anders shoes
 Breslin Wm lab NCCo of A
 Breslin Wm P whsemn NCCo of A
 Breuich Sadie Mrs
 Brewis Jonas watchmn
 Brigham N O
 Brinkham Geo trapper
 Britt Patk J miner
 Brooks Stay smstrs
 Brown Cassius lab The ARR
 Brown Chas lab The ARR
 Brown Enoch clk
 Brown Eug lab
BROWN JAMES V (Avakoff & Brown)
 Brown Ole carp
 Brown Robt I instr Alaska Agrucultural College and School of
 Mines
 Brown Walter O lab The ARR

FAIRBANKS—Continued

Brown Wm lab The ARR

Brown W H lab ARC

Bruce Herbt D prof Alaska Agricultural College and School of
Mines

Bruce M lab The ARR

Bryant Jesse (Imperial Cigar Co)

Buckley John J U S dep marshal

BUICK AUTOMOBILES, Samson Hardware Co Distributors**BUNNELL CHARLES E, A M, Pres Alaska Agricultural Col-
lege and School of Mines****BURGLIN AUGUST (Model Cafe)**

Burglin Clarence wtr Model Cafe

Burglin Norman wtr Model Cafe

Burkhead Calvin H capt U S A Signal Corps

Burnett John F foremn The ARR

Buteau Frank blksmith NCCo of A

Butrovich John miner

Calagrossi Jesse F lab The ARR

Calkins Jos lab ARC

Callahan Danl

Callahan Ellen H Mrs

Callahan Richd miner

Campbell John miner

Carey Martha Mrs

Cargill Henry miner

Carlisle H K

Carlson Carl W lab The ARR

Carlson C E lab ARC

Carlson Harvey lab The ARR

Carlson Matthew O dep U S Marshal

Carlson Swan eng

Carlson Wilma C clk U S Atty

Carlsten Axel clk NCCo of A

Carr Bernard W wtr Model Cafe

Carr Thos W driver

Carter John miner

Casalegno Matt

Cascaden Blanche Mrs

Casiff Alex miner

Ceko Eli whsemn NCCo of A

Chamberlain C A foremn ARC

Chapman Alex tmstr

Chapman Alex C miner

Charovich Stevan lab The ARR

Chiamis Soter lab The ARR

Chico Geo lab The ARR

Choate David wtr The ARR

Christensen Wm S eng

Christian Science Society

**CHURCH OF THE IMMACULATE CONCEPTION (Catho-
lic), Rev Francis Monroe S J, Rector, Garden Island**

Claich Martin miner

CLARK FRANK R (Red Cross Drug Store)

Clark Hiram

CLARK JOHN A, Attorney-at-Law, Notary Public

Clarke Whitney W real est

Clarkin J F cond The ARR

Clausen Edgar dept mgr NCCo of A

Clausen Emil C (Tanana Bakery)

CLEGG CECIL H, U S District Judge

Clegnoni John miner

Cole Manard carp The ARR

COLLINS ERNEST B, Special Asst U S Atty

Collins John miner

Collins Lottie Indrs

Collins Margaret student

Conrad Frank F firemn Fairbanks Fire Dept

**CONRADT AUGUST W, Agt New York Life Insurance Co,
Headquarters at Fairbanks**

Contardi John miner

Cool John miner

Copeland Alvin foremn ARC

Coram Jennings B eng U S A Signal Corps

Cosmopolitan Hotel (Emil E Kaakinen)

Cosslet Al T miner

Courtney Grant rancher

Courtney Walter tmstr

Courtney Wilbur tmstr

Couse Ernest J blksmith

Creighton Blanche

Creighton Richd clk

Crythsan Thos miner

Culbertson Jas M bgemmn The ARR

Cullen Thos C lab

Cunningham J M cook

Cupps W H lab The ARR

Dahl Robt lab The ARR

Dakos Geo lab The ARR

Dalton Jos miner

Daniels R B lab Independent Lbr Co

Darbre Emile lab The ARR

Date Fred J foremn

Davis Edby eng NCCo of A

Davis Frank lab

**DAVIS H C, Sash, Doors and General Mill Work, Interior
Finish and Cabinet Works, Mouldings, Glass and Builders'
Supplies (See p 156)**

Davis John A supt U S Bureau of Mines

Davis Roden mach NCCo of A

Davis Roden S student

Day Robt H pntr

Deal T Henry

Dean Howell W opr U S A Signal Corps

Deiser Peter uphlr

de la Vergne Frank phys

FAIRBANKS—Continued

Denton Chas eng Wachter Bros Co
 Denton Chas mach
 Depperman Wm wtr
 DeWitt Chas whsemn The ARR
 DeWree Lucy opr Fairbanks Tel Co
 DeWree Philip lab
 DeYonge Harry dept mgr NCCo of A
 Diehl Edw S lab ARC
 Dietrick M W bottling wks
 Dilley Ernest E farmer
 Dolan John
 Dondro Frank lab
 Doom Henry lab The ARR
 Dorflinger Clarence whsemn Samson Hdw Co
 Doumkis Thos lab The ARR
 Dourel Gust lab The ARR
 Downs Jos E gard
 Drace Perry lab ARC
 Driscoll C I carp The ARR
 Droses Gust lab The ARR
 Dubois Alphonse wood chopper
 Dugan John lab The ARR
DUNHAM FRANK M (Red Cross Drug Store)
 Dunn John eng Independent Lbr Co
 Dunn Jos lab Independent Lbr Co
 Durand John mach
 Eagles Hall
 Fames R B timekpr The ARR
 Edmonds Chris road comnr
 Edmunds H A disbursing clk ARC
 Edmunds M C asst supt ARC
 Egan Danl miner
 Egan John miner
 Eilenson Carl M aviator
 Eisenmenger Wm miner
 Eklind Wm lab The ARR
 Ekonomos John lab The ARR
 Eline S Aloysius Rev
ELKS CLUB, E B Collins Pres, Axel Carlsten Sec
 Eller Carl lab The ARR
 Ellis H B expmn
**ELLIS JOHN O CAPT, (The Pirate Ship), Everything from a
 Needle to an Automobile (See p 161)**
 Elwell Wm lab The ARR
EMPRESS THEATRE (A E Lathrop)
 English Frank lab The ARR
 Enos Jos lab
 Ensley Jos lab
 Erickson Carl G lab The ARR
 Erickson Chas lab
 Erickson Gus lab The ARR
 Erickson Nicholas miner

ERWIN GUY B, U S Attorney
 Estes W scaler Independent Lbr Co
 Evans Wm E barber
 Everman S J lab The ARR
 Fady Jos lab The ARR
 Fairbanks Auditorium
FAIRBANKS CLOTHING CO (J R Fowle), Clothing, Men's
Furnishings, Hats and Caps, Home of Kuppenheimer
Clothes, Florsheim Shoes and Stetson Hats (See p 156)
FAIRBANKS COMMERCIAL CLUB, R C Wood Pres, E H
Mack Gen Sec-Treas
 Fairbanks Curling Club
FAIRBANKS DAILY NEWS-MINER, Tanana Publishing Co
Publishers, W F Thompson Editor and Mgr
 Fairbanks Fire Department A H Anderson chief
 Fairbanks Laundry Co Inc Julius Anderson pres Andw Ander-
 son v-pres B F Pryor sec-treas
 Fairbanks Public School
 Fairbanks Telephone Co Geo Preston mgr
 Fairburn David F cashr The ARR
 Fairburn David J clk The ARR
FAIRVIEW HOTEL, Geo M Smith Mgr, Leading Hotel in
Fairbanks, Steam Heat and Electric Lights (See p 157)
 Falt Leslie blksmith
 Farnsworth Ira garage
FARTHEST NORTH SHRINE CLUB, Meets 4th Friday in
Month Masonic Temple, J Jennings Pres, A J Nordale Sec
 Feaster Jas F
 Felder Herman carp The ARR
 Felder Saml
 Fels Hugo carp The ARR
FERGUSON ROY W, Mgr Independent Lumber Co
 Ferlekas Michl G lab The ARR
 Finger Carl G lab The ARR
 Finger C Geo
 Finger T Wm
 Finger Waldo R eng
FIRST NATIONAL BANK, George Hutchinson Pres, L C
Hess V-Pres, E H Stroecker Cashr, R C Wood Mgr, United
States Depository, Depository for the Territory of Alaska
(See p 150)
 Fisher Grace chf dep clk U S Dist Court
 Fisher N sawyer Independent Lbr Co
 Fisher Oscar D lab ARC
 Fitzpatrick Jas lab The ARR
 Flanagan John J lab ARC
 Flanagan Patk foremn The ARR
 Flannagan C F master mariner
 Fleischman M P clk NCCo of A
FLORSHEIM SHOES, Fairbanks Clothing Co Agents
 Flynn Frank P clk
 Flynn F lab The ARR
 Foley John electr

FAIRBANKS—Continued

Fonck Jesse carp The ARR

FORD AUTOMOBILES, Samson Hardware Co Distributors**FORD AUTOMOBILES AND SERVICE, Sheldon's Garage**

Ford Helen S Mrs

Ford Thos eng NCCo of A

Foster Earl H lino opr Fairbanks Daily News-Miner

FOSTER THOMAS H (The Hotel Alaska)

Fostrom Andw carp NCCo of A

Fournier Chas

FOWLE JULIUS R (Fairbanks Clothing Co)

Frankhouser Roy E lab ARC

Franklin Calvin W gen mdse

Fraternal Order of Eagles—Fairbanks Aerie No 1037, meets

Saturdays 8:30 p m Eagles hall

Fravel Oscar miner

Friedrich Alois carp ARC

Friss Bernard baker

Fuller Chas miner

Fuller Margaret Mrs

Furniotu Peter lab The ARR

Galatos John wtr The ARR

Gallagher Michl foremn The ARR

Galli Fred restr wkr Model Cafe

Garon Edw miner

Gasovich Saml lab The ARR

Gaspar Wm J lab ARC

Gasser G W

Geis Chas W firemn ARC

Geis Charlotte H

Geis Henry miner

Geis Minnie D (wid Robt J)

Geoghegan Richd H dep clk U S Dist Court

Gertz Wm lab ARC

Gibbs Austin lab The ARR

Gibson Annie

Gibson J R lab ARC

Gibson Thos H garage

Gibson Verna

Giese Emil A lab The ARR

Gilbertson John lab The ARR

**GILCHER WM H, Heating and Plumbing Contractor, Tin,
Iron and Sheet Metal Works (See p 157)**

Gilcrease J M lab ARC

Gilgore S C lab The ARR

Gill Manuel linemn Fairbanks Tel Co

GILLETTE LOUIS R, Asst U S Attorney

Gillman G A wtr The ARR

Gilmore Thos M miner

Goboff Michl lab The ARR

Gokeler Wm F

Golden Gate Hotel (J H Russell)

Golden John lab The ARR

Golden Louis gro
Golden North Hotel (Chas Main)
Goodwin Wm
Gorbracht Wilhelmina Mrs
Gorbracht Wm music tchr
Gordon Aaron wtr Model Cafe
Gordon F S notions
Gorman Jas B lab
Gottier Adolph lab ARC
Gould Walter D
Grandison Peter clk PO
Granieri Eugenio lab ARC
Green Benj driver
Greenberger L wtr The ARR
Gregg Colfax trapper
Gregie Wm mech USA Signal Corps
Grenfell Wm P brkmn
Griffith M F lab ARC
Grillis A B lab The ARR
Grosse Jos miner
Groves Harry lab
Groves John H slsmn
Guirk Thos H
Gunderson John miner
Guttscheik Wm cook Model Cafe
Guy Chas miner
Hagen John O lab
Haggert Thos logger
Haigono Jas lab The ARR
Halastis John lab The ARR
Halden Wm carp
Hall Edw lab The ARR
Haltman Peter lab The ARR
Handley Wm H plmbr
Hanns Thos lab The ARR
Hanot A R
Hanow Tony driver
Hansen Geo carp
Hansen Ingwald miner
Hanson Willard lab ARC
Harden Chas miner
Hardy Geo H farmer
Harkeom J Andw
Harnish Elam miner
Harrington Mary
Harris John wtr The ARR
Hartik R lab The ARR
Haslen H G eng ARC
Hatch Wm D driver NCCo of A
Hauge Lars greenhouse
Haunsey Frank lab ARC
Head Edw miner

FAIRBANKS—Continued

**HEALY RIVER COAL CORPORATION, A E Lathrop Pres,
R D Donaldson Sec, A H McDonald Treas (See p 55)**

Hedger H L dentist
 Heiges Jas B pntr
 Helda Alex lab Independent Lbr Co
 Helenius John lab ARC
 Hemlick Patk whsemn The ARR
 Hemple Tony lab
 Henniger Isaac carp
 Henningsen A lab The ARR
 Henoff Danl lab The ARR
 Henshaw Harry C eng
 Henslee W T lab ARC
 Hensley Hazel B student
 Hensley Kattie M Mrs
 Hepweiler P H watchmn Independent Lbr Co
 Herchberger E W lab ARC
 Hering Arthur messr USA Signal Corps Telg Office
 Hering Boyd C
 Hering Edw A mach
 Hering John
 Herrington Edw J miner
 Herzer Alta A student
 Herzer Jas R miner
HESS LUTHER C, V-Pres First National Bank
 Hesse Wm A US mineral surv
 Hickey David lab The ARR
 Hilty Minda Mrs cook
 Hinckley Chas T dairy
 Hinckley Iris
 Hjorth Saml lab Independent Lbr Co
 Hlepas Jas lab The ARR
 Hodgson Frank L miner
 Hoerler Fred agt
 Hoffman Julius barber
 Hogen Ole foremn The ARR
 Holmes C H foremn The ARR
 Holmes L W lab The ARR
 Holmes Michl cook The ARR
 Hoover Thos brkmn
 Hopkins Paul chemist U S Bureau of Mines
 Hoppe Otto music tchr
**HOTEL ALASKA THE (T H Foster), Central Alaska's Lead-
ing Hotel, Mining and Commercial Men's Headquarters
(See p 151)**
 Houck E M
 Howard David miner
 Howie John I lab The ARR
 Hoyt Ray expmn
 Hoyt Romeo N cigars
 Hull Wm S lab The ARR
 Humphrey R H

Hunt Thos M timber cruiser
 Hunter I Lloyd miner
 Hunter Wm W chf eng NCCo of A
HUTCHINSON GEORGE, Pres First National Bank
 Hutchson Jas T ship clk Samson Hdw Co
 Hutoff Harry carp The ARR
 Huttula Jos miner
 Huttula Otto miner
 Imperial Cigar Co (Wm Root Jesse Bryant)
INDEPENDENT LUMBER CO, Roy W Ferguson Mgr, Manu-
facturers of Rough and Dressed Lumber for Every Purpose,
Mouldings and Inside Finish (See p 158)
 Independent Order of Odd Fellows—Fairbanks Lodge No A-3
 meets Thursdays 8 p m IOOF hall
INTERNATIONAL HOTEL (Emil Pozza), The Headquarters
for Mining and Railroad Men, Opposite the Railroad Station
(See p 158)
 Inglebretson Ludwig miner
 Ingram Henry C U S dep surv
 Iseberg Clarence student
 Isham Chas janitor
 Jackson Nels miner
 Jacobson J C miner
 Jacobson Peter carp The ARR
 James Thos B clk Fairbanks Clothing Co
 Jedoff Thos lab The ARR
 Jennings Guy E agt The ARR
 Jensen Ole S carp
 Jensen Peter blksmith The ARR
 Jestland Harold T student
 Johanson Waldemar lab The ARR
 Johnson A J mach
 Johnson Chas lab The ARR
 Johnson Chester mach Samson Hdw Co
 Johnson Claus farmer
 Johnson Fred J carp The ARR
 Johnson Jacob lab ARC
 Johnson John lab
 Johnson Lawrence lab
 Johnson Louis opr
 Johnson Matthew lab The ARR
 Johnson Moses trapper
 Johnson Oscar lab The ARR
 Johnston Chas F miner
 Johnston Fred B
 Johnston Otto lab The ARR
 Joki Henry barber
 Jones Danl lab ARC
 Jones Evan T lab Independent Lbr Co
 Jones Richd lab Independent Lbr Co
 Jones Robt driver
 Jordan Harry V shoe shiner
 Joslin John H timekpr ARC

FAIRBANKS—Continued

Joy Louis F electn NCCo of A
 Joynt Chas W civ eng
 Jukola Abe lab ARC
 Julian A A lab ARC
 Kaakinen Emil E (Cosmopolitan Hotel)
 Kahlen Erick lab The ARR
 Kaiser Henry W eng USA Signal Corps
 Karshner Cordelia M Mrs
 Keeley P J carp The ARR
 Keenan Theo J lab ARC
 Keene Crosby E miner
 Kegler E F lab Independent Lbr Co
 Keller Chas lab ARC
 Keller Jos C
 Kelly D foremn The ARR
 Kelly Harry miner
 Kelly John H agt
 Kennedy Benj S gro
 Kenyon Wm asst postmaster
 Kilberg Wm lab
 Kimmel Saml lab ARC
 King Elizabeth P Mrs
 King John H lab ARC
 King Matthew lab The ARR
 Kinney Jas C miner
 Kinney Ross J foremn ARC
 Kirk Jas miner
 Kirk Thos barber
 Kirkpatrick Elizabeth E prof Alaska Agricultural College and
 School of Mines
 Klaprotoh Geo W cook
 Knapp Warren carp
 Knezevich Theo lab The ARR
 Knezi Stiv lab The ARR
 Knudsen Conrad S opr
 Knuppe Lyman M eng
KNUPPE MARTIN (Model Cafe)
 Knutson Sufus opr
 Kontros Jos miner
 Kotsanos Gust lab The ARR
 Kozevinkoff Nicholas J lab The ARR
 Kramer Wm F lab
 Kreps Paul G opr USA Signal Corps Telg Office
KUBON RALPH T (McIntosh & Kubon)
KUPPENHEIMER CLOTHING, Fairbanks Clothing Co Dis-
 tributors
 Kusoff Alex lab ARC
 Laboski Michl miner
 Lachevrotiere Chris lab ARC
 Lagler Chas cook Model Cafe
 Lahti John X miner
 Landaas Adolph whsemn NCCo of A

Landerking Geo M mech U S Bureau of Mines
 Lane H timekpr The ARR
 Lang Geo
 Langstrom Richd blksmith
 Lappi John lab ARC
 Larson Louis E carp
LATHROP A E (Empress Theatre), res Anchorage
 Laughlin Ella V Mrs drsmkr
LAVERY ROBERT (Lavery & Bailey)
LAVERY & BAILEY (Robert Lavery, Hallett Bailey), "The House of Quality," Wholesale and Retail Grocers, Provisions, Fruits and Produce, Graniteware, Tinware Crockery and Glassware, Raw Furs Bought and Sold (See p 159)
 Lawrence A J
 Lawson Thos F miner
 Laycock T A carp The ARR
 Lazelle Harriet
 Lazelle Herman A farmer
 Leach Danl J lab The ARR
 LeClair Jas farmer
 Lecos John wtr The ARR
 Lee Geo S carp The ARR
 Lefever Geo C lab The ARR
 Lekich John lab ARC
 Lekich Rodomir lab The ARR
 Lemoine John C cook The ARR
 Leon Ingal lab The ARR
 Leon Leona bkpr The E H Mack Co
 Leonard Howard E mech
 Leonard Peter lab The ARR
 Leukuma Oscar miner
 Lewis Edna M clk
LEWIS FRED (Fred Lewis Machine Shop)
LEWIS FRED MACHINE SHOP (Fred Lewis), General Machine Work, Automobile Repairs, Marine Engine Installing and Repairing, Marine Engineers (See p 159)
 Lewis Henry lab The ARR
 Lewis Josephine (wid Seraphine)
 Lieman Otto H miner
 Lien Paul lab
 Lillico R Lawrence expmn
 Lilliedale Arthur W plmbr
 Lindgren Chas A cook
 Lindgren Erling C lab
 Lindgren Esther G
 Lindgren Levy foremn The ARR
 Lindgren Mabel E clk
 Littlejohn C N foremn ARC
 Littlewood Albt cook ARC
 Livingston C Andw
 Livingstone John lab The ARR
 Locey H S bkpr NCCo of A
 Loer Henry whsemn The ARR

FAIRBANKS—Continued

Loftus Arthur student
 Lonneberg Hans lab The ARR
 Lonz John lab ARC
 Loukas Wm lab The ARR
 Love Frank lab The ARR
 Loveland Thos lab The ARR
 Lubrich Geo lab The ARR
 Lucas Jos lab The ARR
 Lund Roy
 Lunden Louis lab The ARR
 Lutes F lab Independent Lbr Co
 Lynch Helen Mrs
 Lynn Chas J whsemn The ARR
 Lytle W E lab The ARR
 McAlpine Archie lab ARC
 McAuley A S miner
 McCann R T lab The ARR
 McCarthy John carp The ARR
 McCarty Dorothy D
 McCarty Lawrence F
 McCarty Lawrence J miner
 McCarty Wm J
 McCauley Clarence D greenhouse
 McCord Abraham L clothing
 McCord John H plmbr
 McCroskey Thos J dep U S Marshal
 McDermott Chas chief of police
 McDonald Al carp The ARR
 McDonald Cassie dom St Joseph's Hosp
 McDonald John carp
 McDonald M J lab The ARR
 McDonald Vance slsmn
 McDonand Frank B clk
 McFadden Chas wtr The ARR
 McFarland John miner
 McFarland Wm lab The ARR
 McGarvey Frank foremn The ARR
 McGee Reddy boilermk
 McGettigan Wm foremn The ARR
 McGlone Wm mining
 McGown Arthur cook Model Cafe
 McGrath Jas F farmer
 McGrogan Wm lab The ARR
McINTOSH JOHN A (McIntosh & Kubon)
McINTOSH & KUBON (John A McIntosh, Ralph T Kubon),
Prescription Druggists, In the North Since 1898, Known
Throughout Alaska (See p 155)
 McIntyre Agnes Mrs opr Fairbanks Tel Co
 McIntyre Jas farmer
 McIssac Gus lab The ARR
 McKenzie Andw miner
 McKenzie D A cook ARC

McKenzie John lab The ARR
 McKinnon Abe asst supt ARC
 McKinnon Thos miner
 McLeod Wm foremn ARC
 McMahan John lab The ARR
 McMann Jas lab Independent Lbr Co
 McNeil Jas Mrs
 McPhail John lab The ARR
 McPherson C F lab ARC
 McQuarrie Geo A
 McRae Alexander miner
 McTaggart Archie sawyer Independent Lbr Co
 Macbeth Rance lab
MACK E H (The E H Mack Co), Gen Sec-Treas Fairbanks Commercial Club
MACK E H CO THE (E H Mack), Real Estate and Insurance, "Tell Your Troubles to E H" (See p 160)
 Mack Jas P lab The ARR
 Magnussen Sigurd L clk NCCo of A
 Mahoney Patk J carp
 Main Chas (Golden North Hotel)
MALAMUTE KID THE, Frank L Tondro, Touring Private Parties Through All Parts of Alaska, Twenty Years Experience on the Trail
 Maljanich Chris miner
 Malone Peter lab Independent Lbr Co
MANGER MAX, Photographer, Portrait and Commercial Work, Developing and Printing for Amateurs
 Manson Mark lab Independent Lbr Co
 Marchand Leslie A prof Alaska Agricultural College and School of Mines
 Marcoux Aug lab
 Marcusson Thos clk
 Markovich Peter lab The ARR
 Markquam Thos A Mayor of Fairbanks
 Marks Jacob tlr
 Marsh J A eng The ARR
 Marsh J S miner
 Martin John expmn
 Martin Jos lab ARC
MARTIN L H, Sec U S District Judge, Official Court Reporter
 Maser Antone orderly St Joseph's Hosp
 Masonic—Alaska Commandery No 1 K T stated conclaves 3d Tuesdays Masonic Temple W T Pinkerton E C E H Mack recorder, Fairbanks Chapter No 1 R A M regular convocations 2d Mondays 8 p m Masonic Temple M O Carlson H P R W Taylor sec, Midnight Sun Chapter No 6 O E S meets 2d Fridays Masonic Temple Mrs Agnes P Hering W M E H Mack sec, Tanana Lodge No 162 F & A M regular communications 2d Wednesdays Masonic Temple M O Carlson W M Robt Lavery sec
 Matthews John tmstr
 Mavros Gust lab The ARR

FAIRBANKS—Continued

Maxwell Mattie (wid Jas)
 Medill Cyrus D miner
 Meinhart Minnie (wid Roy C)
 Meloche Frank miner
 Menard Max lab The ARR
 Menzel Paul meatctr Waechter Bros Co
 Merchants Cafe
 Mespelt R A lab The ARR
 Michally John
 Miljanich Kristo lab ARC
 Miller Chas H lab The ARR
 Miller C A lab ARC
 Miller Emil acct
 Miller Frank miner
 Miller O'Brien W
 Milovich John lab
 Mitchell Byron C driver
 Mitchell Chas clk Waechter Bros Co
 Mitchell Gabrielle
MODEL CAFE THE (Martin Knuppe, Thos C Youle, August Burglin), The Delmonico of the North (See p 160)
 Mohonovich Jas restr wkr Model Cafe
 Momas Michl lab The ARR
MONROE FRANCIS, S J, REV, Rector Church of the Immaculate Conception, h Garden Island
 Moody Bertram driver
 Moody Ella Mrs
 Moody Geo C mariner
 Moor Danl H lab The ARR
 Moore Jas G game warden
 Moore Jas G jr
 Moore Jerry
 Moran Martin eng
 Morency Alphonso miner
 Morency Mary L
 Morency Placid E miner
 Morgan Al
 Morgan Clinton H prof Alaska Agricultural College and School of Mines
 Morgan Danl R asst cashr USA Signal Corps Telg Office
 Morgan Donald lab Independent Lbr Co
 Morgan Edw clk
 Morgan Jas T miner
 Morgan Stanley R
 Morin Jos miner
 Morris Robt foremn The ARR
 Mucha F W lab ARC
 Mullen Hannah Mrs
MULROONEY JAMES, Circulation Mgr Fairbanks Daily News-Miner
 Munz John meatctr Waechter Bros Co
 Murie O J fur warden Bureau of Biological Survey

Murphy Thos lab The ARR
 Musher Fred driver
 Myers Geo H blksmith
 Myers Vivian A student
 Mylet Gertrude nurse St Joseph's Hosp
 Naderman Casper lab The ARR
 Nakets Nicoli lab The ARR
 Nancheff Peter miner
 Native Sons and Daughters of the Golden North Lodge No 1
 meets 1st and 3d Saturdays 8 p m Commissioner's court-
 room Donald North pres
 Naugle Ralph lab The ARR
 Nawttny Emil lab The ARR
 Nelson Bessie
 Nelson J E carp The ARR
 Nelson Lacie Mrs drsmkr
 Nelson Louis lab The ARR
 Nelson Martin lab The ARR
 Nelson Philip L janitor The ARR
 Nelson Victor lab ARC
 Nerland Ture A pntr
NERLUND ANDREW, Successor to Anderson Bros & Ner-
lund, Paints, Wall Paper, Building Material and House Fur-
nishings
 Newman John carp The ARR
 Nicholas Stephanos lab The ARR
 Nicholson D A lab ARC
 Nicholson D J lab ARC
 Nordale Alton G student
 Nordale Anita M student
NORDALE ANTONE J (Nordale Hotel)
 Nordale Arnold M eng
NORDALE A HJALMER, News Writer Fairbanks Daily News-
Miner
NORDALE HOTEL (A J Nordale), The Hotel Where the
President Stopped (See p 152)
 Nordby John cond
 Nordling John lab The ARR
 Norlin Albt lab
 Norris Jerry P
NORTHERN COMMERCIAL CO OF ALASKA, George
Preston Mgr, Gen Merchandise
 Northern Hotel (Carl Berge)
 Northway Jas A master mariner
 Novachek J F carp The ARR
 Noyes F G
 O'Brien Katherine
 O'Connor Jack C miner
 O'Connor John J eng NCCo of A
 O'Connor John P lab
 O'Connor Olive Mrs drsmkr
 O'Connor Wm P lab The ARR
 Odegard Edw carp ARC

FAIRBANKS—Continued

O'dell Cleo
 O'Farrell Frank J dep clk District Court
 Ohlsen Alfred M clk
 Olevier Arthur E lab ARC
 Olsen Peter lab
 Olson Chas carp The ARR
 Olson John carp The ARR
 Olson Lawrence miner
 Olson Oscar lab The ARR
 Olson Saml miner
 Olson Thos miner
 Orn Michl lab ARC
 Osborn J N lab The ARR
 O'Shea John miner
 Pafelis Thos lab The ARR
 Pakatar Anastasios lab The ARR
 Palm Edw cook The ARR
 Pappas Angelos lab The ARR
 Pappas Louis lab The ARR
 Parker Fred B dep U S Marshal
 Patton Jas lab The ARR
 Patton Mary nurse
 Patty Ernest N prof Alaska Agricultural College and School of
 Mines
 Pauli Alfred J chkr The ARR
 Paulsen Chas H carp
 Pearson Oscar carp The ARR
 Pearson T W carp The ARR
 Peck Leonard G metal wks
 Pedro Mary (wid Felix)
 Pelke Chris lab ARC
 Pemoller Wm lab ARC
 Pendergraft W W (Pendergraft & Aldridge)
 Pendergraft & Aldridge (W W Pendergraft John Aldridge)
 cigars
 Perlenda Antone lab The ARR
 Perlenda John lab ARC
 Perpataris John lab The ARR
 Perusse G L lab ARC
 Peterson Chas F foremn Samson Hdw Co
 Peterson Ernest
 Peterson Gus
 Peterson John M miner
 Peterson Peter J lab The ARR
 Peterson Pearl L clk
 Peterson Peter S guard
 Phillips Harry H cigars and billiards
 Phillips John farmer
 Phillips S E lab The ARR
 Pierce Kendrick dentist
 Pierce Robt W cook

- Pilgrim Earl R prof Alaska Agricultural College and School of Mines
- Pinkerton J Lloyd clk The ARR
- PINKERTON WILKIE T**, Postmaster, Express and Drayage
- Pinska Morris A notions
- PIONEER HOTEL (Charles Beam)**, Hot and Cold Water, Steam Heat, Baths in Connection (See p 161)
- Pioneers of Alaska Fairbanks Igloo No 4 meets 1st and 3d Monday evenings Eagles Hall A M Ohlson pres G E Moody sec Geo Hutchinson treas
- PIRATE SHIP THE (Capt John O Ellis)**, Everything from a Needle to an Automobile (See p 161)
- Piva A R lab ARC
- Pocesky Jas lab The ARR
- Pomon John lab The ARR
- Ponchene Alexis lab The ARR
- Porter D L lab ARC
- POST OFFICE, W T Pinkerton** Postmaster
- Pouliss Nicholas lab The ARR
- POZZA EMIL (International Hotel)**, General Store, Cigars, Tobacco, Soft Drinks, Prospectors' Supplies and Employment Agent (See p 158)
- PRATT HARRY E** Attorney-at-Law
- Pratt Louis K lawyer
- Pratt Walter clk NCCo of A
- Preg Leo cook ARC
- Preiss Karl bakery
- Presbyterian Church Rev J F Vernon pastor
- Preston Douglas G asst bkpr NCCo of A
- Preston Geo mgr NCCo of A and Fairbanks Telephone Co
- Price Bessie Mrs
- Price John plmbr The ARR
- Procopos Peter miner
- Protzman Gerald (L F Protzman & Son)
- Protzman Helen L
- Protzman Louis F (L F Protzman & Son)
- Protzman L F & Son (L F and Gerald) sls agts
- Pruis Geo
- Pryor B F sec-treas Fairbanks Laundry Co Inc
- Radovich Thos T miner
- Ragalyi Albt furrier
- Rambo Jas W gard
- Raymond Decleseq cook
- Raymond John W
- Reap Wm janitor
- Rebekahs—Golden North Lodge No 4-A meets 1st and 3d Tuesdays IOOF Hall
- RED CROSS DRUG STORE (Dunham & Clark)**, Druggists, Opticians, Prescriptions, Dealers in Toilet Articles, Stationery and Confectionery, Soda Fountain in Connection, The Home of the Rexall Remedies (See p 162)
- Reed Aleck
- Reger Jos lab The ARR

FAIRBANKS—Continued

Reynolds Frank A timekpr The ARR
 Reynolds R L lab The ARR
 Rice Artemas M firemn Fairbanks Fire Dept
 Rice C A lab The ARR

RICHARDSON HIGHWAY TRANSPORTATION CO, R E
Sheldon Local Mgr, Automobile Stages via the Celebrated
Richardson Highway

Rickert Paul J greenhouse
 Riding J Howard miner
 Ridylan Chas miner
 Risley Z L blksmith Samson Hdw Co
 Ritter John V carp

RIVERS JULIAN G, City Attorney and Clerk

Robertson N Mrs photog
 Robinson Fred C miner
 Robinson Geo miner
 Robinson H H
 Robinson Russel R clk The ARR
 Rodebaugh Jas S cond
 Rogers Evan lab
 Romig Elizabeth
 Romig J H phys
 Root Wm (Imperial Cigar Co)
 Rose Danl agt
 Rosen Louis miner
 Ross Edw C mach
 Ross Hosea H undtkr
 Ross Thos miner
 Roskopf Jacob gard St Joseph's Hosp
 Roth Dorothy H
 Roth Rinehart F lawyer
 Rothenberg Richd lab Independent Lbr Co
 Rudolph H lab Independent Lbr Co
 Rudy Steve lab The ARR
 Russell Jas H (Golden Gate Hotel)
 Russell Leith J printer Fairbanks Daily News-Miner
 Russell Muriel F student
 Russell Norman C brkmn
 Rust Jesse W pipeftr NCCo of A
 Ryan B P
 Ryan Geo cook The ARR
 Ryder Eugene J lawyer
 Rynearson Walter L firemn
 St James Methodist Episcopal Church
 St Joseph's Hospital Sister Robert superior in chg
 St Louis Wm trucker Independent Lbr Co
 St Matthew's Episcopal Church
 St Pierre Adolph miner
 Sabin Mel
 Sabljak John lab The ARR
SALLADAY GLADYS, Bookkeeper First National Bank

SAMSON HARDWARE CO, Jas E Barrack Pres-Mgr, John Barrack V-Pres, R E Sheldon Director, The Largest Exclusive Hardware and Machinery House in the Interior of Alaska, Store, Foundry, Machine Shop, Warehouses and Offices Garden Island (See p 153)

Sanderkin Geo M
 Sanderlin E L
 Sanders Adolph lab
 Sanders Oscar eng
 Sanderson Saml R lab ARC
 Sanford David
 Sanford Jesse H miner
 Sarfeno Robt miner
 Scanlon L J cond The ARR
 Schaber Robt F driver
 Scharard Wm pntr
 Scharf Gust lab The ARR
 Scherver Wm mach
 Schneider Albt G lab The ARR
 Schoeser John P miner
 Schoeser Louise M student
 Schultz Carl
 Schumacher Minnie Mrs
SCHUTZ PETER (The Variety Store)
 Scofield D boommn Independent Lbr Co
 Seiling Henry F wtr Model Cafe
 Selberg Carl whsemn NCCo of A
 Seldon R E
 Sells Mark tlr
 Sellstrom Clarence F opr USA Signal Corps
 Seneff Henry E probation officer
 Seprovich Tony lab The ARR
 Seguin Wm stage
 Seyler Wm forem AR
 Shafer Lillian Mrs
 Shafer Mary student
 Shafer Roy farmer
 Shanly Jack rancher
 Sharbono Margaret Mrs
 Sharp Al
 Sharpe Marie E Mrs (Troy Hotel)
 Shater Martin miner
 Sheldon Chas E electn
SHELDON ROBERT E (Sheldon's Garage)
SHELDON'S GARAGE (R E Sheldon), An Authorized Ford Service Station, Automobile Electricians, Repairs and Supplies, Parts, Tires and Accessories (See p 162)
 Shellhorn F W wtr The ARR
 Shells Mart tlr
 Shermer Ernest tmstr
 Sherner H lab ARC
 Shibley A L carp The ARR
 Shumen J W lab The ARR

FAIRBANKS—Continued

Silas Wm lab
 Simmons W S carp The ARR
 Simpson Herbert E woodchopper
 Simpson H lab Independent Lbr Co
 Simson Alex notions
 Sintiles Michl lab The ARR
 Sjoberg Carl lab The ARR
 Slater Chas dairy
 Smith Andw lab The ARR
 Smith Chas H carp
 Smith Elizabeth (wid Jonathan)
 Smith F B lab The ARR

**SMITH GEORGE M (Smith's Hardware and Gun Store), Mgr
 Fairview Hotel**

Smith Hugh printer Fairbanks Daily News-Miner

SMITH JOSEPH H (Smith's Hardware and Gun Store)

Smith J H lab The ARR
 Smith J W cook The ARR
 Smith Lillian G clk PO
 Smith Murray C ice mfr

**SMITH'S HARDWARE AND GUN STORE (J H and G M
 Smith), Hardware, Guns, Ammunition, Fishing Tackle and
 Sporting Goods**

Smythe Edw J master mariner
 Snodgrass Milton D
 Snodgrass Sarah E (wid Wm)
 Solen John P farmer
 Solka Paul guard
 Soulis Nicholas lab The ARR
 Spacek Chas lab The ARR
 Spadaro Frank foremn The ARR
 Spaich Chris lab The ARR
 Spodnick John lab The ARR
 Spritzer Steve miner
 Stadoge Chris lab Independent Lbr Co
 Stakemire Geo lab
 Steel Nels carp The ARR
 Steele Peter fruits
 Stein Abraham 2d hd gds
 Stejskal Barney F firemn Fairbanks Fire Dept
 Stepovich Michl miner
 Sterling Hawley W

STETSON HATS, Fairbanks Clothing Co Distributors

Steve Howard carp
 Stevens Gilbert B U S Marshal
 Stevens Morton E lawyer
 Stevens Thos guard
 Stevenson Roger H opr USA Signal Corps Telg Office
 Stewart Sarah (wid John)
 Stolcis Julius miner
 Stone Jas chef USA Signal Corps
 Strauss Levi & Co L F Protzman & Son sales reps whol dry gds

STROECKER EDWARD H, Cashr First National Bank

Stroupe Clement C opr USA Signal Corps

Struthers J Fred mgr Waechter Bros Co

Sumi Minnie (wid Swen)

Sumi Violet N student

Sutherland J Arthur phys

Sweasey Enos lab The ARR

Sweeney Chas B farmer

Tanana Bakery (E C Clausen)

TANANA PUBLISHING CO, W F Thompson Pres, Publishers Fairbanks Daily News-Miner

Tate Antone W miner

Taylor Chas W

Taylor Edmund

Taylor Ike P supt ARC

Taylor John lab ARC

Taylor Scot miner

Taylor Robt W clk U S Dist Court

Terrill Edw restr

Thelin Anna Mrs Indrs

Thimme Lorenz

Thomas Geo C Memorial Library Mrs F Lewis librarian

THOMAS MARGARET E, Sec U S Attorney

Thompson Benj F dep U S Marshal

Thompson Chas L

Thompson Isaac M lab ARC

THOMPSON WM F, Editor Fairbanks Daily News-Miner, Pres Tanana Publishing Co

Tipli Matt watchmkr

Tirpock John lab ARC

Tobin J L

Tole John miner

TONDRO FRANK L, Guide

Tonseth Einar A slsmn

Tonucoi Tony lab The ARR

Tony John cook The ARR

Torabos Geo cook Model Cafe

Townsend Calvin F insp U S Bureau of Fisheries

Townsend Emily dep U S Marshal

Tozier Leroy lawyer

Trefunoff Geo lab The ARR

Trim W D lab ARC

Troy Hotel (Mrs M E Sharpe)

Truesdell Archie M prof Alaska Agricultural College and School of Mines

Trunan John lab ARC

Tuppurainen Albion carp

Turnbarger Augustus A greenhouse

Turner Frank mech ARC

Ungetheum Henry E tlr T Berg

U S Army Signal Corps Warrant Officer Harry L Davis in chg

U S A Signal Corps Telegraph Office

U S Bureau of Mines (branch) John A Davis supt

FAIRBANKS—Continued

U S Detention Hospital C C Webster in chg

Urick Max cook

Vail H foremn The ARR

VanBibber Theo B foremn Independent Lbr Co

Vance Joshua S clk

VanCurler Dell brkmn

VanRaes Emil watchmn

VanSant A W lab The ARR

**VARIETY STORE THE (Peter Schutz), Hardware, Tents,
Awnings, Trappers' and Prospectors' Supplies, Guns, Am-
munition and Sporting Goods (See p 163)**

Vedin Gustav A miner

Vercellie Jos miner

Vernetti John lab The ARR

Vernon Jas F Rev pastor Presbyterian Church

Vining R L

Visca Jos lab The ARR

Vogles Thos lab The ARR

Volkman Wm F lab

VonGerbig Howell lab The ARR

Voucheles Nicholas lab The ARR

**WAECHTER BROS CO, J F Struthers Mgr, Wholesale and
Retail Meats, Poultry, Butter, Cheese and Eggs**

Walk Annie Mrs smstrs

Wallner Victor lab ARC

Walsh Jas C lab The ARR

Wardelich Fred restr wkr Model Cafe

Warden John lab The ARR

Warren Harry foremn ARC

Washburn Roscoe F clk U S Land Office

Watson Harry G

Watson Mary Indrs

Watson Thos clk

Weber Geo lab ARC

Weber Oscar

Weber Wm miner

Webster Cecil C in chg Fairbanks Detention Hosp

Wehner Adolph lab

Weir Henry A supt Fairbanks Tel Co

Weist Jas D farmer

Weitzel A G filer Independent Lbr Co

Wells Lillian W Mrs Indrs

Wendell Nick C pntr

Wenzel Gus blksmith Samson Hdw Co

Wetherbee Jas A carp

Wetherbee Wm B watchmn

Wheeler Albina A student

Wheeler Frank miner

Wheeler Ray W opr USA Signal Corps

White Dennis wtr The ARR

White Thos rancher

Whitney Michl lab ARC

WHITNEY PRESTON S DR, Dentist Lavery & Bailey Bldg
 Whittemore Geo S miner
 Whittig J T lab ARC
 Wigen A P lab ARC
 Wigen John miner
WILBUR ALDEN L, Sheet Metal Works, Ceiling and Roofing
 Contractor, Plumbing and Heating Contractor (See p 154)
 Williams Allen clk ARC
 Williams Chas wood contr
 Williams Jud lab
 Willis Robt E mining eng
 Wilson Bert lab ARC
 Wilson Bud lab
 Wilson Ella (wid Stephen)
 Wilson Geo L
 Wilson W J
 Windbauer Robt driver
 Wirth John W miner
 Witsel Chas carp
 Wolden Ole foremn The ARR
WOOD FRANK P, Gold Dust Teller First National Bank
WOOD RICHARD C, Mgr First National Bank
 Woodin Mary A Mrs
 Woodward C Harry real est
 Wright Thos cook ARC
 Wright Thos B gro
 Wright Walter carp The ARR
 Yakashoff Michl lab The ARR
 Yarger Walter S miner
YOULE THOMAS C (Model Cafe)
 Young Francis P lab
 Young Frank A guard
 Young Glen cashr U S A Signal Corps Telg Office
 Young Helen G student
 Young Victor carp The ARR
 Young Wm dairy
 Zapel Edwin
 Zarwell Edw W lab
 Zavich Martin lab ARC
 Zimmerman Anton A miner
 Zimmerman John F miner
 Zografos Wm lab The ARR

FAIRBANKS CREEK. (For names see Territorial Alphabetical List.) A mining district 28 m ne of Fairbanks, 14 ne of Gilmore, where daily stage connects with the Tanana Valley Railroad for Meehan, the p o and general supply point.

FAITH CREEK. (For names see Territorial Alphabetical List.) A roadhouse and small mining settlement on Faith Creek, 108 m n of Fairbanks and 76 s of Circle.

FALLS CREEK. (For names see Territorial Alphabetical List.) A station on a creek of the same name and on the Alaska Railroad, 25 m n of Seward, the nearest banking point and p o.

FALSE PASS. (For names see Territorial Alphabetical List.) A p o and cannery settlement on the Alaskan Peninsula of Southwestern Alaska. Seward, 875 m ne, is the nearest banking point.

FINNIGAN'S POINT. (For names see Territorial Alphabetical List.) A station on the trail over the Chilkoot Mountains, 20 m n of Skagway, the nearest banking point and p o.

FISH CREEK. (For names see Territorial Alphabetical List.) Tributary to the Little Chena River in the Fairbanks mining district, 30 m ne of Fairbanks, 18 from Fox, the nearest p o.

FISH EGG. See Craig.

FISH RIVER. Formerly called Nusluik. Heads near the central part of Seward Peninsula, flows southerly into Golovin Bay. It is navigable for small river steamers as far as White Mountain, thence by horse scows to the mouth of the Neukluk, thence to Council and Casa de Paga, a distance of 24 miles. Fairly good timber lines its banks above White Mountain. Council is its nearest p o.

FLAT. (For names see Territorial Alphabetical List). Pop 175. A town and p o, established in 1914, on Otter Creek, 500 m nw of Seward, 80 from Dikeman, its shipping point on the Iditarod River, and 8 miles from Iditarod, its nearest banking point.

FORT ALEXANDER. On Bristol Bay, near Nushagak, which see.

FORT DAVIS. The military post of Western Alaska is located at the mouth of the Nome River, 3½ m e of Nome. Seventy-five soldiers Co D 14th Infantry located here. It is also a telegraph station. Mail by special supply from Nome.

FORT EGBERT. A U S military post at Eagle, which see.

FORT GET THERE. The location of the warehouses of the Merchants Yukon Line, at St Michael, which see.

FORT GIBBON. A U S military post on the Yukon River at Tanana, the p o.

FORT HAMLIN. On the Yukon River, 50 m ne of Rampart, the nearest p o.

FORT KENAI. See Kenai.

FORT LISCUM. (For names see Territorial Alphabetical List.) A small military post, first settled in 1899, on Prince William Sound, 800 m w of Juneau and 699 ne of Sitka. The banking point and nearest p o is Valdez, 4 miles n. Government launch daily to Valdez carries the mail. Washington-Alaska Military Cable and Telegraph system. Valdez Electric Co's telephone connections with Valdez. Steamers stop only when handling government supplies.

FORT MORTON. On Kotzebue Sound, 400 m n of Eaton.

FORT TONGASS. (For names see Territorial Alphabetical List.) A settlement, known also as Tongass Village, on Chatham Sound in the extreme se part of Alaska. Mail to Metlakatla.

FORT WM H SEWARD. A military post, a mile from Haines.

FORT WRANGELL. See Wrangell.

FORT YUKON. (For names see Territorial Alphabetical List.) Pop 319. A p o and trading post, settled in 1840, on the Yukon River, 5 m above mouth of the Porcupine River, 85 nw of Circle and 200 ne of Fairbanks, the nearest banking point. This was formerly a Hudson Bay trading post, and is the nearest point to the Koyukuk gold fields. Sustains a public school, Episcopal church and hospital, saw mill and several general stores. Boat communication with points on the Yukon, Tanana and Koyukuk rivers in summer. Mail weekly.

FORTUNA LEDGE. (For names see Territorial Alphabetical List.) A p o and mining settlement on the Yukon River, settled in 1916, 30 m s of Russian Mission, 241 s of St Michael and 400 se of Iditarod, banking point. Stage communication with all points on the Yukon in winter.

FORTY MILE. A mining settlement on a river of the same name. It is partly in British and partly in United States territory. The richest discoveries have been made on Chicken and Jack Wade creeks, both branches of the Forty Mile. Almost all the other smaller streams are gold-bearing. The nearest commercial point is Forty Mile, Y. T.

FOX. (For names see Territorial Alphabetical List.) A p o and mining settlement, first settled in 1908, on Goldstream and the Tanana Valley Railroad, 10 m n of Fairbanks, the nearest banking point. It is the supply point for Gilmore, Fox Gulch, Dome Vault, Pedro, Goldstream, Eldorado and Engineer Creeks. Has a public school and all lines of business are well represented.

FOX ISLANDS. The eastern and most important group of the Aleutian Peninsula.

FRANKLIN. (For names see Territorial Alphabetical List.) Pop 30. A p o and mining settlement on a creek of the same name, a tributary of Forty Mile River, settled in 1884, 76 m se of Eagle and 80 ne of Forty Mile, the shipping point, 100 w of Dawson, the nearest banking point.

FRASER. A flag station on the WP&Y Ry, 28 m n of Skagway, the nearest p o. A winter telegraph office is maintained here.

FRIENDS MISSION. (For names see Territorial Alphabetical List.) A mission on a peninsula in Kotzebue Sound, first settled in 1897. It is 350 m nw of Nome and 100 n of Candle.

FUNTER. (For names see Territorial Alphabetical List.) A p o on Chatham Strait, 52 m sw of Juneau, the nearest banking point, and 90 nw of Sitka. Mining and salmon canning are the principal industries.

GAKONA. A disc p o and telegraph station on Eagle trail, 132 m n of Valdez. Mail to Gulkana, 4 m s.

GAMBELL. Pop 48 (Siberian Eskimos). A settlement on St Lawrence Island, 200 m w of Nome, the nearest banking point and p o. Has a government school for natives, reindeer herd and a native co-operative store.

GAMBIER BAY. A fishing settlement near Juneau, banking point and p o.

GANES CREEK. A mining settlement on the Innoko River, 10 m (airline) n of Holy Cross, nearest p o.

GATES CITY. See Cleary.

GEORGETOWN. A disc p o in Southwestern Alaska. Mail to Bethel.

GILMORE. (For names see Territorial Alphabetical List.) A disc p o on Goldstream Creek and station on TVRR, 12 m n of Fairbanks, nearest banking point, and 3 n of Fox, nearest p o.

GIRARD POINT. (For names see Territorial Alphabetical List.) A settlement near mouth of the Stikine River, 4 m from Wrangell, nearest p o and banking point.

GIRDWOOD. (For names see Territorial Alphabetical List.) A mining settlement on Glacier Creek and the The Alaska Railroad, on Turnagain Arm, 75 m nw of Seward, nearest banking pt. Hope is the nearest p o.

GLACIER. (For names see Territorial Alphabetical List.) A station on WP&Y Route, 14 m n of Skagway, nearest p o and banking point.

GLACIER BAY. (For names see Territorial Alphabetical List.) A cannery and mining settlement on a bay of same name, 80 m nw of Juneau, the most convenient p o.

GLACIER CITY. (For names see Territorial Alphabetical List.) A mining settlement on the Kantishna River, 130 m from its mouth, 85 se of Kantishna, its p o.

GLACIER CREEK. A mining settlement on a creek of the same name near Nome, the banking and shipping pt and p o, which see for names.

GLEN GULCH. A mining settlement 6 m ne of Hot Springs and 3 ne of Eureka, its p o.

GLOBE ROADHOUSE. On the Olnes-Tolovana trail, 30 m w of Olnes.

GOLD HILL. (For names see Territorial Alphabetical List.) A mining district tributary to Ester Creek. Fairbanks is the nearest p o and banking point.

GOLD RUN. (For names see Territorial Alphabetical List.) A mining settlement on a creek of the same name, 12 m ne of Teller, the p o and shipping point.

GOLDEN. (For names see Territorial Alphabetical List.) A disc p o and landing on Port Wells, the northwest arm of Prince William Sound, 75 m sw of Valdez, its nearest banking point and p o.

GOLDEN. (For names see Territorial Alphabetical List.) A settlement 18 m ne of Fairbanks, the nearest banking point, and 8 n of Fox, the nearest p o.

GOLDSTREAM. A creek near Fox, the p o.

GOLOVIN. (For names see Territorial Alphabetical List.) A p o on a bay of the same name, about 90 m e of Nome, the nearest banking point; sometimes called Chinike. This place is located in the Golovin Bay mining country, which was discovered in 1898. The Fish River, the largest between St. Michael and Port Clarence, flows into the bay near here. The tributaries of this river, the Neukluk, Fox, Casa de Paga and many other smaller streams, are almost all gold-bearing. Some of the streams contain salmon and trout and have timber along their shores. Has steamboat communication with Nome, Council, St Michael and other Alaska coast points. Telephone connections with Council and Nome.

GOLOVIN BAY. A mining country on a bay of same name in the Good Hope mining district. The country is divided into four districts, viz: Discovery, Eldorado, Big Four and Blake. Golovin and Council are the commercial points of the district.

GOLOVIN MISSION. (For names see Territorial Alphabetical List.) Pop 200 natives. A Swedish mission, government school and reindeer station on Norton Bay, 25 m e of Golovin, its nearest p o.

GOODPASTER. (For names see Territorial Alphabetical List.) A mining settlement on the south fork of a river of the same name, 35 m e of McCarthy, the supply point and nearest p o. Reached in summer by boats 15 miles from the head of navigation on the Tanana River. Placer gold in paying quantities was found in the spring of 1916. Principal creeks are Michigan, Granite, Bear, Big Swede, Solly, Monte Cristo, Monte Carlo, Wisconsin, Caribou and Capital.

GORDON'S ROADHOUSE. A roadhouse on the Fairbanks-Chitina trail, 96 m s of Fairbanks.

GOVIMAMUT. A native settlement on the Kuskokwim River, 240 m nw of Nushagak, its nearest p o, and 90 se of Koserefsky. It is on the mail route from Nushagak to Koserefsky.

GRAEHL. A suburb of Fairbanks, which see for names.

GRAND VIEW. A flag station on The Alaska Railroad, 45 m n of Seward, the nearest banking point and p o.

GRANITE. (For names see Territorial Alphabetical List.) A flag station on The Alaska Railroad, 22 m n of Matanuska, the nearest p o, and 58 n of Anchorage, its banking point.

GRANITE MINE. (For names see Territorial Alphabetical List.) A disc p o and mining settlement on Hobo Bay (Port Wells), in the northwest arm of Prince William Sound, 70 m sw of Valdez, its nearest banking point and p o.

GRASS GULCH. A mining settlement on Grass Creek, which flows into Dexter Creek n of Nome, the nearest p o.

GRIMKOFF. A U S telegraph station on the Yukon River, 80 m n of Kaltag.

GRINDALL. A disc p o on Grindall Bay, 15 m w of Ketchikan, its nearest banking point and p o.

GROUSE GULCH. A mining settlement on Grouse Creek, which flows into Dexter Creek n of Nome, its nearest p o.

GULKANA. (For names see Territorial Alphabetical List.) A p o and telegraph station on the CR&NWRy, 128 m n of Valdez, the nearest banking point, and 76 n of Chitina, at the intersection of the Valdez-Eagle trail and the Chitina-Fairbanks winter trail. Washington-Alaska Military Cable and Telegraph System. Tri-weekly stage to Chitina.

GYPSUM. (For names see Territorial Alphabetical List.) Pop 25. A p o and mining camp, settled in 1904, on Chatham Strait, 70 m sw of Juneau, the banking point.

HADLEY. (For names see Territorial Alphabetical List.) A town and disc p o on Prince of Wales Island, settled in 1903, 30 m w of Ketchikan, the nearest banking point, and 10 ne of Chomly, nearest p o. There are extensive ore deposits in the vicinity, principally copper, and large forests of spruce, hemlock and cedar. Has steamer connection with Seattle, Ketchikan and all points.

HAINES. (For names see Territorial Alphabetical List.) Pop about 350, half of which are natives. A town and p o, settled in 1880, incorporated in 1900, prior to that time called Haines Mission, on Chilcoot Inlet, the upper end of Lynn Canal, 1 m e of the Chilkat River and near its mouth, 16 s of Skagway, the nearest banking point, and 88 n of Juneau, the usual banking point. Sustains 4 hotels, 8 general stores, department store, 2 hardware stores, 2 bakeries, tailor shop, drug store and 2 salmon canneries. Has a graded public school, a government school for natives and a Presbyterian Mission Church for natives. All steamships plying between Seattle and Skagway stop at Haines. Fort William H Seward, a company post, adjoins Haines at the southern corporate limits. The Alaska Midland Railroad, under construction, is projected to Rainy Hollow, with Tanana Valley as its ultimate objective point; The Alaska Corporation is projecting an ore railroad to Porcupine and Rainy Hollow via Klukwan, a native village of 300 inhabitants, 23 m nw, and Wells, a roadhouse, 24 m nw. Farming is the principal industry of the surrounding vicinity. Stage semi-weekly to Porcupine via Klukwan and Wells. Washington-Alaska Military Cable and Telegraph System. Haines Telephone Co operates a local system in Haines and vicinity. Mail tri-weekly.

HALEY. See Healyville.

HAMILTON. (For names see Territorial Alphabetical List.) A steamboat landing and trading post on the Yukon River, 105 m se of St Michael, its nearest p o.

HASTINGS CREEK. A mining settlement on south shore Seward Peninsula, 6 m w of Cape Nome, 8 e of city of Nome, supply point and p o.

HATTIE CAMP. See Woedsky.

HAWK INLET. (For names see Territorial Alphabetical List.) Pop, summer 200, winter 15. A cannery village and p o on Hawk Inlet, 60 m nw of Juneau, the nearest banking point.

HAYCOCK. (For names see Territorial Alphabetical List.) Pop 114. A p o and mining settlement on Dime Creek, a tributary of the Koyuk River, settled in 1914, 170 m ne of Nome, the nearest banking point. Local telephone service. Mail from Golovin by steamer in summer and by dog team in winter.

HEALY FORKS. (For names see Territorial Alphabetical List.) A p o across an arm of Norton Sound from St Michael, the nearest p o, and 130 m se of Nome, banking point.

HEALYVILLE. Also know as Haley. A settlement on Tanana River, 170 m sw of Eagle, the nearest p o. Mining is the only industry.

HELM BAY. A disc p o, 25 m w of Ketchikan, nearest p o.

HENEY. A flag station on the WP&YRy, 12 m n of Skagway.

HERNER. A coal mining settlement near Anchorage, p o and banking point.

HIDDEN INLET. (For names see Territorial Alphabetical List.) A cannery settlement, 80 m s of Ketchikan, p o and banking point.

HODCANA. (For names see Territorial Alphabetical List.) A mining settlement on a river of the same name, 75 m nw of Beaver, 80 w of Ft Yukon, the nearest supply point and p o.

HOLIKACHUK. A settlement 80 m n of Holy Cross, the nearest p o.

HOLLIS. (For names see Territorial Alphabetical List.) A disc p o on Prince of Wales Island and Hollis Bay, 39 m nw of Ketchikan, the nearest banking and shipping point, 15 e of Craig, nearest p o. Mining is the principal industry.

HOLY CROSS. (For names see Territorial Alphabetical List.) Pop 275. A p o and settlement on the Yukon River, also known as Holy Cross Mission, settled in 1889, 5 m sw of Kosevsky. Has a Catholic Church and a general store. A mission for the education of Indians. It is a landing for steamers running on the Yukon and a transfer point for Iditarod. Mail weekly in summer, monthly in winter.

HOMER. (For names see Territorial Alphabetical List.) A p o on Coal Point, Kachemak Bay, Cook Inlet, settled in 1896, 87 m sw of Seward, its nearest banking point. Gold, copper and coal are found in the vicinity, though fishing is the principal industry.

HOOD BAY. (For names see Territorial Alphabetical List.) A cannery settlement on Admiralty Island, 8 m s of Killisnoo, nearest p o, and 90 sw of Juneau, banking point.

HOONAH. (For names see Territorial Alphabetical List.) Pop 402. A p o and village on Chichagof Island, 80 m sw of Juneau, banking point. Has two churches, U S government native school and several general stores and fish canneries. Boats weekly to Juneau.

HOPE. (For names see Territorial Alphabetical List.) Pop 50. A p o and mining camp, first settled in 1894, on Turnagain Arm in Cook Inlet, 72 m n of Seward, 40 s of Anchorage, banking point. Has two general stores. Mining is principal industry.

HORSEFELT. A roadhouse on the Chisana trail.

HORSESHOE BAY. A settlement on Latouche Island, 3 m s of Latouche, the p o.

HOT SPRINGS. (For names see Territorial Alphabetical List.) Pop 35. A p o, resort, farming and mining settlement, located in 1902, on Hot Springs Slough, 2 m from the Tanana River, 103 by trail and 205 by water w of Fairbanks, the nearest banking point.

HOWKAN. (For names see Territorial Alphabetical List.) An Indian village and disc p o on Long Island, in Dixon Entrance, 95 m sw of Ketchikan, the nearest banking nad shipping point, and 20 s of Hydaburg, the nearest p o. Some mining properties are worked in the vicinity.

HUBBARD. (For names see Territorial Alphabetical List.) A disc p o on Knights Island in Dyer Bay, 80 m w of Valdez, its nearest banking point and p o.

HUGHES. (For names see Territorial Alphabetical List.) Pop 45. A mining settlement on the Koyukuk River, 275 m from its mouth, 125 sw of Bettles and 125 nw of Tanana, the nearest p o.

HUMBOLDT HARBOR. See Sand Point.

HUNTERS BAY. (For names see Territorial Alphabetical List.) A cannery settlement, first settled 1896, on Prince of Wales Island, 80 m w of Ketchikan, banking point, and 50 w of Sulzer, nearest p o.

HUNTERS. A flag station on The Alaska Railroad, 40 m n of Seward, banking point, and nearest p o.

HYDABURG. (For names see Territorial Alphabetical List.) Pop 350. A p o and native village, settled 1911, on Skukum Narrows, 150 m s of Juneau, 85 w of Ketchikan, banking point, and 20 from Waterfall and Sulzer, shipping points. Has saw mill and two general stores.

HYDER. (For names see Territorial Alphabetical List.) Pop 250. A town in Southeastern Alaska, at the head of Portland Canal. Has a bank, newspaper and saw mill, while all lines of business are represented.

IDEAL COVE. Situated on Mitkoff Island, near mouth of Stikine River, 20 m nw of Wrangell, the nearest p o.

IDITAROD. (For names see Territorial Alphabetical List.) Situated on the Iditarod River, 300 m above the junction of the Innoko and Yukon Rivers, the shipping and banking center of the Iditarod mining district. Is a town of 50 inhabitants, and was founded on the first of June, 1910, with the arrival of the first stampeders from Fairbanks.

IDITAROD—Continued

The camp was discovered on Christmas day, 1908, when William A. Dikeman and John Beaton struck pay on Discovery claim, Otter Creek. The succeeding summer saw a considerable stampede, but the winter of 1909 was a quiet one, owing to the long delayed discovery of the rich pay of Flat Creek. In July, 1910, the first real discovery of ground was made on the Marietta claim near the head of Flat, and it was but a short time thereafter till the world knew that a new placer camp had been added to the resources of Alaska.

Iditarod is well laid out in blocks and streets and is but seven miles overland from Flat. The city has a bank, a complete telephone system, which takes in all the creeks, a wireless plant with telegraphic communication with Nulato.

In the high water period of spring big steamers can come to Iditarod and even to the mouth of Otter. Later in the season, however, Dikeman becomes the head of navigation and freight is transshipped by small steam craft and gasoline boats.

Otter precinct is the official name of the Iditarod district with a United States commissioner, marshal and recorder with headquarters at Flat.

IGAGIK. A native settlement on Bristol Bay, 60 m se of Nushagak, the nearest p o. Mineral deposits are found in the vicinity.

IGLOO. (For names see Territorial Alphabetical List.) Pop 200 natives. An Eskimo village and mining camp, also known as Mary's Igloo, on the Kuzitrin River, 80 m ne of Nome, the nearest banking point, and 30 n of Teller, the nearest p o. Has Lutheran and Catholic missions and government school for natives. It is the distributing point for a large mining district, and headquarters of the midwinter reindeer fair for the Seward Peninsula.

IKIKIKTOIK. A native settlement on Norton Sound, 25 m e of St Michael, the nearest p o.

IKOGMUT. A Greek mission, also known as Yukagamut, on the Yukon River, 52 m sw of Holy Cross, the nearest p o.

ILIAMNA. (For names see Territorial Alphabetical List.) Pop 75. A p o and native settlement, 11½ m nw of Iliamna Bay, 2 from Lake Iliamna and 80 w across Cook Inlet from Sel-dovia, the shipping and transfer point. Seward is the nearest banking point. There are large placer deposits in the vicinity and fur trading is carried on. Greek Catholic Church. Mail three times monthly.

INDIAN RIVER. A mining settlement on a river of the same name, a tributary of the Koyukuk, 15 m se of Hughes, and 110 nw of Tanana, nearest p o.

INGERAMUT. A native settlement on Nunivak Island, in the Bering Sea, 280 m sw of St Michael, the nearest p o.

INIKILLY. A native village 300 m (air line) n of Nome.

INMACHUK RIVER. (For names see Territorial Alphabetical List.) A mining settlement on a river of the same name, flowing into Kotzebue Sound, 200 m n of Nome, its shipping point. Deering, at its mouth, is the nearest p o.

INNOKO. (For names see Territorial Alphabetical List.) A settlement and disc p o at the head of navigation on the Innoko River, a tributary of the Yukon, 50 m n of Iditarod, the nearest banking point. Mail to Ophir.

IRON CREEK. (For names see Territorial Alphabetical List.) A mining settlement on a creek of the same name, 45 m e of Nome, the nearest banking point and p o.

ISLANDS OF FOUR MOUNTAINS. Four mountainous islands of the Aleutian group in southwestern Alaska.

JACK WADE. Pop 40. A p o and mining settlement, settled in 1899, on Jack Wade Creek which flows into Forty Mile River, a tributary of the Yukon, 4 m sw of Steel Creek, 55 s of Eagle, the nearest shipping and supply point, and 95 sw of Dawson, Y T, the nearest banking point.

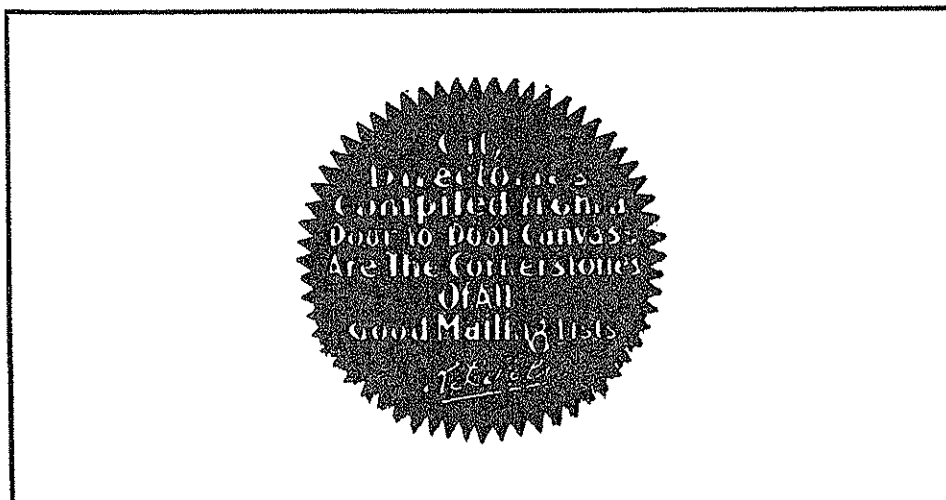
JACKSON. See Howkan.

JARVIS. A village in northern Alaska at mouth of Itkillih River.

JOHNSON'S ROADHOUSE. A disc stage station on the Chitina-Fairbanks trail, 18 miles s of Fairbanks.

JONESVILLE. (For names see Territorial Alphabetical List.) A p o on Matanuska br of The Alaska Railroad, 45 m n of Anchorage, banking point.

JUALIN. A disc p o on Berner's Bay, 60 m nw of Juneau, banking point, and 20 m n of Amalga, nearest p o.



Stability AND Permanency

Do you realize that a City Directory advertisement is a testimonial to the permanency, the stability, of the advertiser?

That's the sort of concern all of us want to patronize, because we know when they sell us merchandise they are behind it in every way, today, tomorrow, and for the years to come.

"Fly-by-night," "fire-sale" and other temporary or "get-rich-quick" concerns rarely appear in the City Directory.

And it is a noteworthy fact that the concerns which advertise one year in the city directory are there again next year. 90% of directory advertising is renewed.

Directory advertising is profitable. In connection with the classified business headings it is doubly effective.

May we explain how and why it will pay you?

R. L. POLK & CO., Inc.

Telephone Main 1626

71 Columbia

Seattle, Wash.

City of Juneau

JUNEAU. Population 3600. Around Juneau, the capital of Alaska, centers great developed mining, fisheries and timber industries and potential raw resources for further practically unlimited development of those resources.

Historically one of the first placer camps of the Territory, owing its birth to placers on Gold Creek discovered by prospectors in 1880, the primitive placer camp has maintained a consistent gradual growth until it has reached the status of a small cosmopolitan city, with practically all the conveniences of cities hundreds of times larger in population.

The Alaska-Juneau Gold Mining Company, part of whose plant is located within the city limits, is handling an average of 8,000 tons of rock per day at a cost of 48c per ton, and mines and mills a greater tonnage at a lower productive cost than any other gold mine in the world. It has in its employ approximately 400 men. Although there are other mining properties either in the development or operating stage in the Juneau District, among which are: El Nido Mining Company, Hirst-Chichagof Mining Company, Chichagof Gold Mining Company, Falcon Arm Mining Company, Admiralty-Alaska Gold Mining Company, Alaska-Dano Mines Company, Jualin-Berner's Bay Mining Company, Pinta Bay Mining Company, William Henry Bay property, Wakefield property, Borland property, Williams property, Vevelstad property, Peterson property and the Gypsum Mining Company, yet the mineral resources of the adjacent district are practically untouched. The future alone can foretell what annual multiple will be eventually reached as against the Juneau Mining District's present annual gold production of \$2,600,000.

The local trade of practically all the salmon canneries north of Wrangell Narrows and south of Yakutat naturally gravitates to Juneau. While the salmon fisheries throughout the Territory are highly developed, there awaits a period of tremendous development in many other food fish, all of which abound in the waters tributary to Juneau. Logically, Juneau offers preeminent advantages to the halibut fisheries, which rank second in the Alaskan fisheries. Accessibility to the halibut banks and to regular transportation lines offers advantageous opportunity for cold storage warehouses for the handling and shipping of fresh fish from Juneau. Cheap water and electricity, abundant housing facilities, and good stores, all present exceptional advantages to the upbuilding of a permanent cold storage business.

The only operating pulp mill in the Territory is located at Speel River, about thirty-five miles south of Juneau, with a daily production of 40 tons of pulp. In the Juneau District are at least nine billion board feet of timber available for lumber and pulp purposes, which, with the developed water power of 26,000 h.p. in the district, and the estimated undeveloped water power of 174,640 h.p., cannot lead to other than the early establishment of a great pulp and paper industry in the district, of which the Alaska Pulp & Paper Company's plant at Speel River is only the forerunner.

Juneau is a livable community, having water works, electric lights, concrete buildings, first-class hotels, good streets, stores with large stocks of merchandise, and a population of high character, the majority of whom are Americans originally hailing from practically every state in the Union. Juneau's public school building is a three-story concrete building erected in 1917 at a cost of \$75,000, and at present is estimated to be worth \$125,000. The school employs eighteen teachers and offers courses ranging from kindergarten through the high school, whose graduates are accredited to the universities of the Pacific Coast states. The municipal government spends practically \$35,000 a year in the maintenance and upkeep of the school, which has an attendance of about 400 pupils.

There are churches of several denominations, including Presbyterian, Methodist, Roman Catholic, Greek Catholic, Episcopal, Christian Science, and Native Presbyterian Church. There are thriving fraternal organizations, including: Elks, Moose, American Legion, Knights of Columbus, Scottish Rite Bodies, Masons, Eastern Star, Shrine Club, Boy Scouts, Camp Fire Girls, and many others. There are also active and progressive civic bodies, such as Women's Club, Chamber of Commerce, etc. The city government maintains and operates a public library at its own expense in the City Hall, which cost in the neighborhood of \$25,000.

The weather in Juneau, being modified by the effect of the Japanese current, compares favorably to that of Seattle, Washington, and Portland, Oregon. The mean January temperature is 26.7 degrees and the mean July temperature is 57.4. There are entire winters when the temperature does not reach the zero point, and seldom does the temperature go that low. There are no cyclones or tornadoes, the nights are always comfortable, and there are few extremes of heat or cold. Work can be carried on out of doors practically the entire year.

Leading from Juneau are roads that present unequalled vistas of tumbling cataracts and silver-sheaved inland bays of