

Johnson Eric miner
Johnson Fred miner
Johnson Gotfred miner
Johnson Gus H eng
Johnson Gust miner
Johnson Gustav C miner
Johnson Henning miner
Johnson Herman miner
Johnson Jeffsy miner
Johnson J Victor miner
Johnson Louis miner
Johnson Olaf miner
Johnson Peter miner
Johnston John C miner
Jones Chas D disbursing clk Alaska Road Commission
Jones Danl A U S mineral surv
Jones Geo A
Jones Gust E miner
Jones Harry miner
Jorgensen Frank miner
Jourden Alice D (wid Jos D)
Julian Gold Dredging Co V A Julian mgr
Julian R V clk
Julian V A mgr Julian Gold Dredging Co
Kaasen Gunnar miner
Kaasen Olaf miner
Kah Arthur W assayer Miners & Merchants Bank
Kahoe Thos miner
Kautzous Wm miner
Kean Saml mining
Keenan J J miner
Keene A L tlr
Keene Wm J miner
Kelliher Jos (Kougarok Mining & Ditch Co)
Kelliher Thos miner
Kelling Henry C miner
Kelly Cornelius miner
Kerka Frank miner
Kern Henry miner
Kern Louis miner
Kerr John miner
Kerr Lawrence S sten U S Dist Court
Kerr M E
Kerrigan G R miner
Kessler Phil butcher
Kester C C miner
Kimball C E (Flume Dredge Co)
Kjelsberg Grygas miner
Kjelsberg Hanna miner
Kjelsberg Ralph miner
Kjelsberg Sakse miner
Knodel John clk
Knutsen Julius O miner

NOME—Continued

Koch Julius Mrs
Koch Wm H miner
Kougarok Mining & Ditch Co (Jos Kelliher)
Kretz John miner
Kuhn R L miner
Kunlas Gus barber
LaFortune Bellarnine S J Rev pastor Church of The Holy Angels
Laiblin Grant W miner
Lande Barney miner
Landstrom A J miner
Lang P J clk
Larsen Emil miner
Larson Chas miner
Larson C C Wm
Larson Saml expmn
Laydon Michl S
Ledgerwood Robt W carp
Leding Nels miner
Lee Richd (Swanberg & Lee)
Lehmann Thorulf gro
Lehmann Thorulf C clk
Lehmann Wm F
Leidy C H miner
Lepri John
Lescher Chas barber
Lescher Rose (wid Ed D) restr
Lester Alfred E miner
Lewis Chas W notions
Lewis Faxon C
Lewis Norman W dep clk U S Dist Court
Liebes Arnold L
Lincoln Hotel (Barney Gibney)
Lind G C miner
Lind Henry miner
Lindell Carl miner
Lisson Richd F electn
Liston Harry
Liston John miner
Lomen Alfred J (Lomen Bros)
Lomen Bros (Ralph Carl J Alfred J and Harry) gen mdse
Lomen Carl J (Lomen Bros)
Lomen Gutbrand J judge U S District Court
Lomen Harry (Lomen Bros)
Lomen Ralph (Lomen Bros)
Longfellow H D miner
Loveway Dennis cook
Loyal Order of Moose Nome Lodge No 1413
Ludvigsen Andw miner
Lundell Carl miner
Lupp Anna cook U S Federal Jail
Lupp Fred master mariner
Lyle Thos miner

Lynch Jas miner
Lyons & Orton (T R Lyons (Seattle) I D Orton) lawyers
McAlone Thos A miner
McArdle Jas miner
McCahey John expmn
McCarty M J miner
McClure Edw G miner
McConnell Alex J supt Alaska Industrial Mining & Power Co
McDonald Archie miner
McDonald Danl miner
McDonald J M
McGann Thos miner
McGuire Wm C
McIntosh A F miner
McIntosh Chas miner
McIntosh Peter miner
McIver M miner
McKenna Wm A miner
McLaughlin Chas S miner
McLean D G miner
McLeod Jas W miner
McLeod Wm miner
McMillan Rod K miner
McNutt Robt miner
McWilliams John A miner
Macdonald Allen J miner
Magurequi Demas miner
Mahla Geo C dredgemn
Mahn Gus miner
Maine Northwestern Development Co T A Davies (Seattle) pres
Males Geo cook
Malm Gus miner
Malsagor Anna Mrs wtr
Malsagor Saml miner
Martin Frank furs
Mason Chas miner
Mason Fred W miner
Masonic-Eastern Star Alaska Chapter No 1
Masonic F & A M Anvil Lodge No 140 Jas Keenan W M
C W Thornton sec meets 1st and 3d Thursdays 8 p m
Masonic-Royal Arch Seward Chapter No 2
Mathes Chas miner
Mathews John F agt Behring Dredging Co
Mathison E miner
Maynard Geo S (Nome Weekly Nugget) Mayor of Nome
Mayor of Nome Geo S Maynard
Mebes Fred miner
Melsing Louis miner
Melvin Harry miner
Mickens Adrian H
Milford Jas janitor P O
Miller Albt miner
Miller Frank

NOME—Continued

Miller Otto miner
Miller W E
Milligan Chester dredgemn
Milot Chas H
Mincene Ditch Co
Miner Eug
Miners & Merchants Bank G R Jackson cashr Arthur W Kah
assayer
Mish G E miner
Mitchell Chas (Bangor Dredging Co)
Mitchell John L miner
Modini Earl G dep clk U S Dist Court
Mogg Wm master mariner
Monahan John M Mrs (Pioneers Igloo Hotel)
Mondt Jas G
Mondt Lloyd R
Monroe Chas E
Monroe Frank W
Monson Oscar miner
Moon Herbt E miner
Moonlight Water Co Edw Johnson mgr
Morris Luther R weather observer
Mulligan Thos miner
Murphy P F City Treas
Naschenweng Louis miner
Nakkela Thos miner
Nash F G miner
Nash J E miner
Nass John miner
Neily Bernard W
Neiman H W
Nelson Alfred miner
Nelson Aug miner
Nelson Ben miner
Nelson C M miner
Nelson C O miner
Nelson C W miner
Nelson Geo miner
Nelson Julius miner
Nelson Louis miner
Nelson Nels miner
Nelson Nicholi miner
Nelson Oscar miner
Nelson Paul miner
Neuhaus Chas
Neuhauser Jos miner
Nicholas Antone miner
Nicholson Albt clk
Niebling Clara wtr
Niebling M Mrs restr
Niebuhr Christ miner
Nielsen Jorgen miner

Nilsen Carl M miner
Nixon N M miner
Nome Chamber of Commerce Ralph Lomen pres
Nome Lighterage & Commercial Co Thos A Davies (Seattle)
pres
Nome Weekly Nugget Geo S Maynard editor-mgr
Nordstrom Albt mill wright
Nordstrom Frank eng
Nors Jos miner
Nylander Albt W miner
Nystrom Gus miner
O'Brien Thos miner
Ochman Thos miner
O'Connell B M Mrs mining
O'Connor Duffy trader
O'Farrell Hugh
Oglesby R S mgr Eskimo Gold Mining Co
Olander Aug F miner
Olsen John
Olsen Martin miner
Olsen Peter miner
Olson Chas miner
Olson Chris H miner
Olson Einar miner
Olson Olaf whsemn
Olson Otto W miner
Olson Sarah Mrs
O'Neill Hugh lawyer City Atty
Ong Yong Indy
Orland Albt M contr
Orton Ira D (Lyons & Orton)
Orum Chas lab
Osbeck Andw
Owens John miner
Pangman Wm E eng
Paul Max miner
Paulson Wm miner
Pearce Edw L miner
Peck C L dredging
Pederson John A miner
Pehrson Erick miner
Person Axel miner
Person Elin
Persun Elwood miner
Peterson Andw master mariner
Peterson Anton W miner
Peterson Chas O lab
Peterson C J pntr
Peterson John X miner
Peterson Nels miner
Peterson Peter X miner
Pine Thos miner
Pioneer Mining & Ditch Co

NOME—Continued

Pioneers Igloo Hotel (Mrs John M Monahan)
Ploman H miner
Polet Antonio gen mdse
Polet Frank bkpr A Polet
Polliston Raymond S agt Swenson & Co
Polson Albin miner
Polson Peter J miner
Post Hubert A Rev pastor St Josephs Church
Powell Ellis E gen mgr Alaska Mines Corp
Powell John E supt Alaska Mines Corp
Powell Oliver M asst supt Alaska Mines Corp
Preston Frank eng
Rabeen Geo miner
Radovich Thos miner
Raelson Richd driver
Rahn Frank miner
Ramsey Albt cook
Rank Ira M gen mdse
Rappe Max miner
Rasmusson Chas miner
Rattrey Norman
Ravenkilde Martin M
Reed Irving McK U S mineral surv
Reed R W J dep colr U S Customs
Reigle Henry prospector
Reinich Carl miner
Rhoades R M driver
Rice Chas F carp
Riley Harry S
Ringseth Peter miner
Ringwall Nels miner
Roberg John miner
Rohn Edwin H miner
Rohn Fredk J miner
Rolando Barney miner
Ross E P miner
Ross Thos A
Roskopf Jos miner
Rowe W J expmn
Rudberg John E miner
St Germain Oliver
St Joseph's Catholic Church Rev Hubert A Post S J pastor
Sales Jos miner
Sampson Adolph miner
Samuelson Hans miner
Sandboe Osten J miner
Sather Peter miner
Saupe Julius v-pres-mgr- Alaska Tel & Tel Co mgr Flume
Dredge Co
Scheidler Jos A
Schelke Ivan clk
Schmidt Henry miner

Schmidt Walter miner
Schneider Chas miner
Schofield Geo D lawyer
Schultz Henry miner
Sciarini Chas L miner
Segerstrom J W (Segerstrom & Hagen)
Segerstrom & Hagen (J W Segerstrom H H Hagen) jewelers
Seidenverg Leo clothing
Sellenius Carl miner
Seppala Leonard formn
Shade Howard miner
Sheehan Wm A miner
Sheldon Frank D clk
Sheldon Hotel (Mrs E Goss)
Sime Fred miner
Simeon Sarantis H cook
Sims Chas porter
Sitton Albion M miner
Skyarter Andrias O miner
Smith H H miner
Smith Jennie E Mrs nurse
Smith W L insp Alaska Road Com
Soderholm Aug miner
Solberg Martin O barber
Stack Dennis miner
Stanfield Ole miner
Starr John miner
Stephenson Lauritz miner
Stevens Anna cook
Stevenson Thos miner
Stewart A C miner
Stokes Harold L watchmn
Stone Chas B miner
Stone Fred miner
Stoneberger J Frank miner
Storm Milton miner
Strand Martin
Strand Ole miner
Strom Chas eng
Strum Aug miner
Stump Roy miner
Stump Sol miner
Sturtevant Wm H miner
Sullivan Eug miner
Sullivan Jeremiah miner
Sullivan Wm miner
Summers Robt supt Alaska Road Com
Sundback John clk U S Dist Court
Sundquist Conrad miner
Swanberg Nels (Swanberg & Lee)
Swanberg & Lee (Nels Swanberg Richd Lee) mining
Swanson Edw miner
Swartzell Jas A (Golden Gate Hotel)

NOME—Continued

Swedeman Henry miner
Swedman John miner
Sweeney Patk H miner
Sweeney Thos miner
Sweetman Peder miner
Talsnes Ole miner
Tarnutzer Edw N barber
Tate Wm H miner
Taylor H L miner
Thompson Allie miner
Thompson Andw miner
Thompson Louis miner
Thompson Marvin miner
Thompson Miller miner
Thornton Chas W U S Comnr
Thorsen Hans miner
Tiffany Jennie (wid Wm)
Tohnier John miner
Tomlinson Edw miner
Topolsky J J miner
Torkensen Saml fishermn
Tremalis Antonio
Tuft Oscar eng
Twedt Andw miner
Ullrich Paul miner
VanderHayden Saml miner
Vernon John lab
Virtanen Hjalmer miner
Vogel Chas A miner
Voigt Chas F miner
Wagner Wm E.
Walsh John J
Walsh Michael J miner
Walthall Inez V missionery
Ward C S supt Alaska Road Com
Warsing Francis M miner
Warwick John W miner
Watson Chas R miner
Weaver Oliver S mgr Alaska Telephone & Telegraph Co
Webb S A
Webb Wm H meats
Webster Edw miner
Weckman Chas
Weith L E miner
Welch Curtis phys
Welsh W E miner
Wentland Robt miner
Wesley John L phys
Wheeler John miner
Wheeler Wm miner
White Wm J miner
White Wm M clk

Wick Carl miner
 Wick Oscar miner
 Widlund Axel miner
 Widstead J C miner
 Wild Goose Mining & Trading Co F M Ayer gen mgr
 Wilg Ralph miner
 Williams Elizabeth A Mrs nurse
 Willmore Thos ditchmn
 Wilson John A U S mineral surv
 Winkler M A
 Winstop Nels blksmith
 Winters John M miner
 Wold Conrad M miner
 Wolfe Chas M miner
 Woodrich John miner
 Woofter C J dep clk U S Dist Court
 Wright Arthur F miner
 Yager Peter mail carrier
 Young John H
 Zackerson Victor E
 Zakovina Anton miner
 Zubriesky Jos miner

NOME RIVER. A mining settlement on a river of the same name, 4 m e of Nome, the banking, shipping point and p o.

NORTH FORK ROADHOUSE. A roadhouse 51 m ne of Fairbanks, 25 s of Deadwood and Miller House, its most convenient p o.

NORTON BAY STATION. A trading post and native settlement on a bay of the same name, 80 m e of Council, the nearest p o.

NOVIKAKAT. See Mouse Point.

NULATO. (For names see Territorial Alphabetical List.) Pop 258. A p o and trading post formerly called Tlakeyit, settled in 1838, on the Yukon River, 200 m sw of Tanana, 252 ne of Anvik, 550 w of Dawson, Y T, 200 e of Nome and 150 n of Iditarod, the nearest banking point. It is a government telegraph and signal station. Contains 3 general stores, roadhouse, a government public school for natives, and a Catholic church. Deposits of gold and coal are found in the vicinity. Has boat communication with St Michael, Dawson, Y T, Tanana and Fairbanks. Mail weekly.

NUSHAGAK. (For names see Territorial Alphabetical List.) A p o, first settled in 1850, on Bristol Bay at the mouth of the Nushagak River, 850 m w of Sitka, 500 w of Seward, the nearest banking point. Contains several salmon canneries and Greek Orthodox church. Gold has been found along the rivers and on the beach. Boat with mail monthly from Seward.

NUSHEK. See Natchek.

NUTCHEK. See Natchek.

ODGOVIGAMUT. A native settlement on the Kuskokwim River, on the mail route from Nushagak to Holy Cross, 62 m sw of the latter, the nearest p o.

ODIAK. A trading station on Prince William Sound, 500 m nw of Sitka. Cordova is the nearest banking point and p o.

OGHAGEMUTE. A Catholic mission on the Kuskokwim River, 55 m s of Holy Cross, the nearest p o.

OKNAGMUT. A native settlement on the Kuskokwim River, on the mail route from Nushagak to Holy Cross, 35 m n of Akiak, the nearest p o.

OKNAVIGAMUT. A native settlement on the Kuskokwim River, 75 m sw of Holy Cross, the nearest p o.

OLD AUK VILLAGE. A native settlement on Lynn Canal, 10 m n of Juneau, the nearest p o.

OLD MISSION. A mission on the Yukon River, 17 m w of Tanana, the nearest p o.

OLD WOMAN MOUNTAIN. A telegraph station on the summit of the divide between Kaltag and Una Creeks, 75 m ne of St Michael, the nearest p o.

OLIVE CREEK. A mining settlement on a creek of the same name in the Tolovana mining district, 60 m nw of Fairbanks, the nearest banking point. Livengood is its nearest postoffice.

OLNES. (For names see Territorial Alphabetical List.) Pop 300 (town and creeks), A p o and station on the Tanana Valley Railroad, situated 15 below Dome Creek, 25 m n of Fairbanks, the nearest banking point. Telephone connections and daily mail service. Stage line to Tolovana 53 m w.

OOAILIK. A native settlement on Kululak Bay, 45 m (air line) w of Nushagak, the nearest p o.

OPHIR. (For names see Territorial Alphabetical List.) A p o and mining settlement, formerly called Ophir City, on the Innoko River, 48 m across by winter trail e of Dishkaket or 225 by river and 100 ne of Iditarod, the nearest banking point.

OPHIR CREEK. A mining settlement on a creek of the same name near Council, the p o. It is one of the richest mining streams on Seward Peninsula and is a tributary of the Niukluk River near Council. The Wild Goose Mining & Trading Co has extensive placer mines here and have connected it with Council by rail. There are also many other rich claims on the creek.

ORCA. A disc p o, settled in 1895, on Prince William Sound, 500 m nw of Sitka and 13 n of Cordova, the banking point and nearest p o.

OREGON CREEK. A mining settlement on a creek of the same name near Nome, the banking, shipping point and p o.

ORLOVA. A settlement on Kadiak Island, 26 m s of Kodiak, the nearest p o. Fishing is the principal industry.

OSBORNE CREEK. A mining settlement on a creek of the same name, near Nome, the banking, shipping point and p o.

OUR HOME. A roadhouse on the Chitina-Fairbanks trail, 111 m n of Chitina, 162 n of Valdez, and 196 s of Fairbanks.

OVERLAND ROADHOUSE. A roadhouse on the Chitina-Fairbanks trail, 258 m n of Chitina and 49 s of Fairbanks.

PALMER. (For names see Territorial Alphabetical List.) A p o, formerly called Farmington, on The Alaska Railroad, 46 m n of Anchorage, the nearest banking point.

PARK. A disc p o in Central Alaska. Mail to Holy Cross.

PASTOLIK. A native settlement on Pastol Bay, 58 m sw of St Michael, the nearest p o.

PAXSON. A disc p o and stage station, U S Telegraph and Signal Corps Station on the Fairbanks-Chitina trail, 170 m s of Fairbanks, 136 n of Chitina, 57 n of Gulkana, the nearest p o. Considerable prospecting is being done in the mountains nearby, with excellent results.

PAXSON'S ROADHOUSE. Name changed to Paxson, which see.

PEALOCK CREEK. A mining settlement on a creek of the same name, near Nome, the banking and shipping point and p o.

PEAVY. A mining camp and disc p o on the Koyokuk River, 150 m n of Tanana and 25 s of Bettles, nearest p o.

PEDRO CREEK. A mining settlement on a creek of the same name, a tributary of Goldstream, 4 m ne of Gilmore, 7 ne of Fox, the p o and supply point, and 20 n of Fairbanks, banking point.

PEDRO ROADHOUSE. Situated on 9 below Pedro Creek, and 14 m n of Fairbanks, banking point. Fox is nearest p o.

PERRY CREEK. A mining settlement on a creek of the same name, near Nome, nearest p o, banking and shipping point.

PERSEVERANCE. A mining camp $4\frac{1}{2}$ m from Juneau, banking point, and 3 from Thane, nearest p o.

PETERSBURG. Pop 879. A p o and town first settled in 1898, on Mitkoff Island and Wrangell Narrows, 105 miles se of Juneau, and 95 nw of Ketchikan. Mail and passenger steamers from Seattle every three or four days in summer and once a week in winter. Has a bank, 7 general stores, canneries, saw mill, machine shops, and ship ways, meat markets, hotels, restaurants, a bakery, a drug store, two physicians, a dentist, a well equipped hospital, etc. A weekly newspaper, The Petersburg Weekly Report. Great quantities of fresh, salted and mild cured salmon are exported. Petersburg is the gateway to the halibut fishing banks north and south and is the headquarters for a large fleet of herring and halibut fishermen. Has a public school. Express, Am Ry. U S Signal Corps and Wireless Station connects with wireless and cable at Wrangell. Mail and passenger boat leaves weekly for Kake, Tyee, Baronoff, Red Bluff Bay, Port Walter, Port Armstrong, Port Conclusion, Pillar Bay, Washington Bay, Saginaw Bay.

Alphabetical List of Names

Abolin John logger
 Adams John lab
 Alaska Pacific Herring Co K L Steberg agt
 Allen Jas fox breeder
 Allen John C
 Allen Mary (Totem Pole)
 Allen Robt M mach
 Allen Saml carp
 Allison Andw fishermn
 Alvestad Carl fishermn
 Ames J E fox breeder
 Anderson Andw fur buyer
 Anderson Chas carp
 Anderson Chas G fishermn.
 Anderson Hans fishermn
 Anderson J C wharfinger
 Arctic Blue Fox & Fur Co fox breeders
 Arctic Hotel (Carl Roger)
 Arness Conrad mach
 Arness Olaf logger
 Austin Carl D carp
 Baggen Edw fishermn
 Baker C M fox breeder
 Bakken Christ fishermn
 Bank of Petersburg J W Stoft pres Jacob Johnson v-pres T S
 Elsemore cashr
 Bender J R mgr Petersburg Mercantile Co
 Benjamin O fishermn
 Benjaminson Ole fishermn
 Benson Fred fishermn
 Benson Olrik fishermn
 Berg Ludwig C fish buyer
 Birdsell Chas R fishermn
 Borseth John fishermn

Braafladt O A dentist
Bradley J H agt Standard Oil Co
Brennan Jas A soft drinks
Bugge Hans fishermn
Bukken Hans fishermn
Burch Richd fishermn
Byers Mary Mrs
Cambas Bonapart V
Campbell D I fox breeder
Cherenoff Steve fishermn
Christensen Xenia lino opr Petersburg Report
Christopherson John fishermn
Citizens Co-Operative Wharf Co S L Hogue pres Chris Iveten
sec-treas
Citizens Steam Laundry R York mgr
Claybell Martin
Cleary Bros fox breeders
Conclusion Island Fox Co fox breeders
Cornelius L B mgr Hogue & Tveten
Cornstead Peter fishermn
Cornstead Peter R logger
Dahl H A fox breeder
Dahl M B (Swanson & Dahl)
Dahl Ronwald fishermn
Ecklund Andw fishermn
Ekrem Ole fishermn
Elsemore T S dep colr in chg U S Customs cashr Bank of Petersburg
Enge M B fishermn
Enge Rasmus (Enge & Peterson) moving picture theatre
Enge & Peterson (Rasmus Enge Oscar Peterson) fox breeders
Evens Martin carp
Eyon John logger
Frederickson Walter fishermn
Frisyold Ole fishermn
Fryer F (Fryer Machine Works)
Fryer Machine Works (F Fryer)
Garrison O A fishermn
Gauffen John soft drinks
Gauffen Saml fishermn
Geindrad H P gas eng
Gerde Andw fishermn
Glacier Fish Co N Nelson mgr whol fish
Goedek Frank prospector
Granquist O W U S comnr
Greenaa Chas (Sanitary Market)
Haarberg Cato (Petersburg Meat Co)
Hadland Seger clk
Hadland Thos fishermn
Hadland Toralph fishermn
Hagen Con fishermn
Hainzinger Geo meatctr
Hallingstad Caspar fishermn

PETERSBURG—Continued

Hallingstad Gertrude Mrs restr
Hallingstad Jacob fishermn
Hammer John
Hansen Michl fishermn
Hanseth John logger
Hanseth Olaf logger
Hanson John logger
Haug Bert confr
Hausness Lars fox breeder
Helgeson Harry lab
Helgeson Jos lab
Helgeson Leo lab
Hennas Delbert
Hestness Knute
Hildebrand C J fox breeder
Hofstad I M gen mdse
Hofter Geo fishermn
Hogue S L (Hogue & Tveten) pres Citizens Co-operative Wharf
Co
Hogue & Tveten (S L Hogue Chris Tveten) gen mdse
Holm & Sutphen elec and plmbg supplies
Howell Arthur
Howell Noah
Isaacson G M
Israelson Andw carp
Israelson John carp
Israelson Louis J
Jackson C W fox breeder
Jacobsen Carl jeweler
Jacobsen Oscar fishermn
Jensen John fishermn
Jensen Reinhart fishermn
Jenseth Hans fishermn
Johanson Sverre
Johnson Andw millwright
Johnson Arvid fishermn
Johnson Conrad fishermn
Johnson Ed wfishermn
Johnson Esther W bakery
Johnson Jacob v-pres Bank of Petersburg
Johnson John A fishermn
Johnson Louis lab
Johnson Otto fishermn
Jones A B phys
Jorgenson P (Sanitary Market)
Kinney Chas mach
Klabo Martin fishermn
Knutsen Bros (Peter and John) coopers
Knutsen John (Knutsen Bros)
Knutsen Peter (Knutsen Bros)
Lando Chris fishermn
Lando Thos H fishermn

Lange Chris
Larsen Carl fishermn
Larson Eric A fox breeder
Larson & Peterson fox breeders
Lee Harold fishermn
Lehner G A fox breeder
Lero Severin fishermn
Lersons Reinert fishermn
Locken Edw agt Pacific Steamship Co
Loseth John fishermn
Lott Alfred fishermn
Lott John fishermn
Lund Peter P
Lundgren & Benson fox breeders
McBride J C logger
McConnel Robt fishermn
McDonald Gordon logger
McLaughlin W W fox breeder
MacGregor Neil dep U S Marshal
MacKechnie J L dep supr U S Forest Service
Mann Chas confr
Markrud John barber
Martin Matt fishermn
Martin Olof K fox breeder
Martin Peter O
Martins Louis fishermn
Martinson Nick fishermn
Matenson Louis fishermn
Mathis R C dentist
Mathisen Andw
Matsen John fishermn
Matson Hjalmar pntr
Miller Edna tchr
Miller Louis carp
Miller Richd fishermn
Missick M tlr
Moe Ole fishermn
Molver Danl fishermn
Molver John fishermn
Mork Andw fishermn
Morrisey H fishermn
Moyes M mach
Moyes W P electn
Myklebost A logger
Nelson Geo barber
Nelson N mgr Glacier Fish Co
Nelson O H fishermn
Ness Erick
Nicholson Geo M
Nicolayson J K carp
Norberg Chas fishermn
Noreid Anton fishermn
Norman Wm fishermn

PETERSBURG—Continued

Nygaard Olaf fishermn
O'Dell Blanche (Totem Pole)
Ohmer Elmer (Petersburg Shrimp Cannery)
Oleson Carl fishermn
Olson Chris fishermn
Osten C D
Otness Jacob postmaster
Otness John fishermn
Pacific Steamship Co Edw Locken agt
Pacquette Guy fishermn
Pacquette Roy fishermn
Pacquette Verne fishermn
Parks C O fishermn
Parks J A fox breeder
Pautzke Chas A barber
Pederson A L fishermn
Pederson E fishermn
Pederson Peder fishermn
Perkins M S editor Petersburg Weekly Report
Petersburg Blue Fox Co fox breeders
Petersburg Meat Co (Cato Haarberg)
Petersburg Mercantile Co J R Bender mgr gen mdse
Petersburg Packing Co E Schoenwald (Seattle) mgr
Petersburg Shrimp Cannery (Elmer Ohmer)
Petersburg Weekly Report M S Perkins editor-publ
Peterson Hilmer fishermn
Peterson Oscar (Enge & Peterson)
Peterson Peter fishermn
Pickernell Gus fishermn
Preuschoff Edw fox breeder
Preuschoff Frank fox breeder
Rayner Frank (Star Bakery)
Refsnes Jacob fishermn
Reliable Transfer (Claude and Clifford Roundtree) expmn
Richardson F fishermn
Roach Frank R logger
Robertson Robt fishermn
Robinson & Johnson fox breeders
Roger Carl (Arctic Hotel)
Ronnae Hans logger
Roundtree Claude (Reliable Transfer)
Roundtree Clifford (Reliable Transfer)
Rowley E O phys
Royden Wm fishermn
Runstad Hans fishermn
Samuelson John carp
San Juan Fox Co fox breeders
Sandvik Nels fishermn
Sandwick S fishermn
Sanitary Market (P Jorgenson Chas Greenaa) meats
Sathe Peter fishermn
Schuck Chas plmbr

Sesby John fishermn
Sholberg John fishermn
Sime Robt fishermn
Sing Lee gen mdse
Sjong Louis fishermn
Sjursen Ole fishermn
Slagen Peter carp
Smith J S fishermn
Sommer Peter fishermn
Standard Oil Co J H Bradley agt
Star Bakery (Frank Rayner)
Steadman John
Steberg Knute real est
Stedman Kenneth
Stenslid Knute baker
Stoft J W pres Bank of Petersburg
Stoft & Refling fox breeders
Strand John fishermn
Sukoi Island Fox Co fox breeders
Sunde Julius
Sutphen D E wharfinger Citizens Wharf
Swansen Victor fishermn
Swanson Algot fishermn
Swanson Carl E (Swanson & Dahl)
Swanson Jas fishermn
Swanson & Dahl (C E Swanson M B Dahl) gen mdse
Takase Y Indy
Tenfjord Olaf fishermn
Thompson John mach
Thompson Knute fishermn
Thompson Richd fishermn
Todahl Martin cigars
Todal Eric fox breeder
Totem Pole (Mary Allen Blanche O'Dell) confr
Tovsen Harold fishermn
Trading Union Inc gen mdse
Tsutsui Thos restr
Tveten Chris (Hogue & Tveten) sec-treas Citizens Co-operative
Wharf Co
Ursen Andw fishermn
Walveck Edw blksmith
Wanberg John fishermn
West Chas A
Wheeler Drug & Jewelry Co (Jas H Wheeler)
Wheeler Jas H (Wheeler Drug & Jewelry Co)
Wick Chris fishermn
Wick Hans
Wickan Andw fishermn
Wood O E fishermn
Woodward Louis expmn
Worth Wm E
York R mgr Citizens Steam Laundry
Zahl Hans carp

PHILLIPS. A disc p o near Strelna, its p o and shipping point on the Copper River & Northwestern Ry, 150 m n of Cordova, its nearest banking point.

PICKARTS LANDING. Also known as Koyukuk. A landing on the Yukon River, 190 m ne of Anvik, 15 ne of Nulato, the nearest p o.

PILEDRIVER ROADHOUSE. A roadhouse, formerly known as the Thirty Mile Roadhouse, on the Chitina-Fairbanks trail where it crosses Piledriver Slough, 279 m n of Chitina and 28 s of Fairbanks, the nearest banking point and p o.

PILLAR BAY. A fishing settlement on Kuiu Island, 160 m s of Juneau and nw of Ketchikan, 120 w of Wrangell, the supply point, and 97 w of Petersburg, the nearest banking point.

PINMOOT. A fur trading station on the Yukon River, 45 m above Russian Mission and 25 n of Holy Cross, the nearest p o.

PIONEER. A mining settlement on a creek of the same name near Eureka.

PIRATE COVE. A disc p o, fishing and trading station, settled in 1879, on Popof Island, near Karovinski Strait on the Alaska Peninsula, 825 m sw of Seward, the nearest banking point, 25 ne of Unga and 8 se of Sand Point, the p o and shipping point. Has electric lights, water piped to the wharves and carries on an extensive trading in furs and fish.

PLEASANT CAMP. A station on the trail over the Chil-koot mountains, 35 m n of Skagway. Haines is its nearest p o.

POINT ASTLEY. (For names see Territorial Alphabetical List.) A recently established p o in Southeastern Alaska, south of Juneau.

POINT BARROW. Is in the extreme n part of Alaska, 420 m ne of Nome, the nearest banking point, and 12 n of Barrow (Cape Scythe), its nearest p o.

POINT BLOSSOM. Called also Cape Blossom, ne entrance into Kotzebue Sound from the Arctic Ocean. Kotzebue is the p o.

POINT ELLIS. Pop 250 (natives, orientals and whites). A fishing station and disc p o, first settled in 1902, near the head of Pillar Bay on Kuiu Island, 160 m s of Juneau and nw of Ketchikan, 120 w of Wrangell, the commercial center, and 97 w of Petersburg, the nearest banking point. Salmon fishing is the principal industry.

POINT HOPE. Pop 250 natives. A settlement on the Arctic Ocean, 350 m (260 air line) n of Nome, the nearest banking point, and 150 nw of Kotzebue. An Episcopal mission is located here, as is also a trading post and whaling station. Tigara is the p o name.

POINT SPENCER. A settlement on Port Clarence, 70 m (air line), 110 by water, nw of Nome, banking point, and 20 nw of Teller, p o. Gold is found along the beach.

POINT WARDE. A fishing settlement situated on Wrangell Island, 120 m se of Juneau. Wrangell is the p o and banking point.

POKERCREEK. A mining district 45 m ne of St Michael. Unalakeet is the nearest p o.

POORMAN. (For names see Territorial Alphabetical List.) A p o and mining settlement on a creek of the same name, settled in 1912, 55 m s of Ruby, shipping point, and 120 n of Iditarod, banking point.

POPLAR GROVE. A roadhouse on the Chitina-Fairbanks trail, 88 m n of Chitina and 219 s of Fairbanks.

PORCUPINE. A mining settlement and disc p o on Keaheena Creek, 122 m nw of Juneau, 60 w of Skagway, nearest banking point, and 40 nw of Haines, nearest p o.

PORT ARMSTRONG. A disc p o in Southeastern Alaska.

PORT CHESTER. A steamboat landing on Annette Island. Metlakatla is the nearest p o.

PORT CLARENCE. A mining settlement on an arm of the Bering Sea of the same name, 110 m nw of Nome and 20 nw of Teller, the nearest p o. Placer, quartz and tin mining is carried on.

PORT CONCLUSION. A mild cure station, 110 m w of Petersburg, its banking, shipping point and nearest p o.

PORT ETCHES. See Natchek.

PORT GRAHAM. Pop 47. A cannery settlement on English Bay, Cook Inlet, about 160 m sw of Seward and 15 s of Seldovia, the trading point and p o.

PORT GRAVINA. A steamboat landing on an island of the same name, 3 m w of Ketchikan, the nearest banking point and p o.

PORT HEIDEN. A disc p o in Southern Alaska, 60 m s of Seward, nearest banking point. Chignik is the nearest p o.

PORT JOHNSON. See Dolomi.

PORT SAFETY. A U S wireless station and disc p o on Bering Sea, 25 m e of Nome, the banking point and p o.

PORT WALTER. A cannery settlement, 105 m w of Petersburg, its nearest banking, shipping point and p o.

PORT WELLS. The northwest arm of Prince William Sound. Valdez is the p o.

PORTLAND CITY. A settlement on Portland Canal at the mouth of Salmon River, 50 m se of Ketchikan, nearest banking point and p o.

PORTLOCK. (For names see Territorial Alphabetical List.) A p o on the southern end of Kenai Peninsula, 100 m sw of Seward, banking point.

POTTER. A construction camp on The Alaska Railroad, near Anchorage, which is its p o.

PRIBILOFF ISLANDS. A group of islands located in the Bering Sea, 200 m nw of Unalaska, the nearest p o. The most important of the group are St George and St Paul, where the fur seals congregate during the months of June and July. These islands are inhabited by 300 natives, whose sole occupation is the killing and skinning of seals and the salting and packing of their pelts. No one but natives are allowed to do the killing. The islands are entirely under control of the U S Bureau of Fisheries, which takes care of native population. Steamer communication by government vessels, or vessels chartered by the government to carry supplies to the islands and furs from the islands to the department headquarters in Seattle. No persons are allowed on the islands except by permission from the U S Bureau of Fisheries in Washington, D C.

PTARMIGAN DROP. A station on Valdez-Fairbanks winter trail, 33 m n of Valdez, the nearest banking point.

PYMUTE. A mining settlement in the Iditarod district, 375 m sw of Fairbanks. Iditarod is the nearest banking point and p o.

PYRAMID HARBOR. A boat landing on Lynn Canal, 80 m nw of Juneau and 5 sw of Haines, the nearest p o.

QUADRA BAY. A fishing settlement 40 m s of Ketchikan, its nearest banking point and p o.

QUARRY. A flag station on the W P & Y Route, 10 m n of Skagway, the nearest banking point and p o.

QUART CREEK. A station on the Council City & Solomon River Ry, 40 m e of Nome, its banking point, and 7½ n of Solomon, its p o.

QUINCHAHA. A native settlement on Kuskokwim River, on the mail route from Nushagak to Holy Cross, 150 m nw of the former. Quinhagak is the nearest p o.

QUINHAGAK. (For names see Territorial Alphabetical List.) Pop 200. A p o and native village settled in 1898, on Kuskokwim Bay, 60 m n of Good News Bay, 120 sw of Bethel, 250 nw of Nushagak, 450 se of Nome and 300 sw of Iditarod, the nearest banking point. A government school for natives and a Moravian church and mission are located here. Mail monthly from Bethel.

RAMPART. (For names see Territorial Alphabetical List.) Pop 121. A p o and trading post, also known as Manook City, first settled in 1896, located on the left bank of the Yukon River, 630 m nw of Dawson, Y T, and 150 nw of Fairbanks, the nearest banking point. It is the supply station for Big Manook mining district, also the Eureka mining district across the divide 28 m from Rampart. Has many very valuable producing mines. Exports furs and gold. Am Ry Exp. Washington-Alaska Military Cable and Telegraph System. Mail steamers from all river points land here.

RAPIDS THE. A roadhouse on the Fairbanks-Chitina trail, 125 m s of Fairbanks.

RAT ISLAND. One of the western Aleutian group of the same name.

RAT ISLANDS. A westerly group comprising Amchitka, Buidir, Kiska, Rat and Semisopochnoi Islands of the Aleutian peninsula.

RAYMOND. A wood camp and steamboat landing on the Yukon River, 26 m above Circle, the nearest p o.

RED SHIRT. A landing on the Koyukuk River, 45 m (air line) n of Koyukuk.

REILLY. A mining settlement on Dahl and Shungnak creeks, tributaries of the Kobuk River, 215 m e of Kotzebue, its shipping point, and 350 ne of Nome. Shungnak is the p o.

REVILLA. A disc p o on Revillagigedo Island, 5 m ne of Ketchikan, the nearest banking point and p o.

REYNOLDS. Pop 200. A mining settlement on Latouche Island, 60 m sw of Valdez and 40 e of Seward, its nearest banking point. Has a general store, hospital and hotel. Latouche is its p o.

RICHARDSON. (For names see Territorial Alphabetical List.) Pop 300. A town and p o on the Chitina-Fairbanks summer trail and the Tanana River, 252 m n of Chitina and 69 se of Fairbanks, the nearest banking point, and 50 w of Goodpaster. It is the distributing point for Tenderfoot, Banner, McCarthy, Healy River, Upper Chena, Bush and Redmond Creek mining districts. Washington-Alaska Military Cable and Telegraph System. Mail stage from Washburn weekly in winter.

RIDGETOP. A station on the Tanana Valley Railroad, in the Tanana mining district.

RIGHT. Also called Wiseman. Nolan is the p o name.

ROCK CREEK. A station on the Council City & Solomon River Ry, 4 m n of Solomon, the p o.

ROCKY POINT. Name changed to Denver, which see.

RODMAN. A disc p o on Peril Strait and Rodman Bay, 150 m sw of Juneau, nearest banking point.

ROMAKERS. A wood yard and landing on the Yukon River, 25 m n of Circle, the nearest p o.

ROOSEVELT. A disc p o and station on The Alaska Railroad, on Kenai Lake, 23½ m n of Seward, nearest banking point and p o.

ROSE INLET. On Dell Island w of Prince of Wales Island, 100 m sw of Ketchikan, the banking point. Hydaburg is its nearest p o.

RUBY. (For names see Territorial Alphabetical List.) Pop 128. A town and p o on the Yukon River, 120 m below Tanana. A stampede was made to this place in May, 1911, since which time gold has been discovered along Long Creek, a tributary of the Yukon, about 30 m back from Ruby City, and also on Fox, Bear and Fourth of July creeks, tributaries of Long Creek, and on Big Dome Creek, which heads from the same dome as Long Creek. The pay is in shallow ground, bed rock being about 15 or 18 feet down, in thawed ground. Supplies are landed from the river boats at Ruby and freighted 30 m overland to the creeks. Has Catholic and Presbyterian churches, public school, general stores. Am Ry Exp. Ruby Telephone Co.

RUSSIAN MISSION. (For names see Territorial Alphabetical List.) A p o and the principal station of the Greek church in the western part of Alaska, located on the Yukon River, 100 m sw of Iditarod, its nearest banking point.

ST GEORGE ISLAND. See Pribilof Islands.

ST JAMES. A mission on the Yukon River, 200 m nw of Fairbanks, the nearest banking point, and 17 w of Tanana, the nearest p o.

ST JOSEPH. A trading post on the Yukon River, 100 m nw of Kaltag, 600 e of Nome and 150 n of Iditarod, its nearest banking point. Nulato is the nearest p o.

ST LAWRENCE ISLAND. Pop 300 natives. An island in Bering Sea, 50 m se of the Siberian coast, 150 sw of Cape Prince of Wales and 160 sw of Nome, the nearest banking point and p o. There is a Presbyterian mission on the n end of the island and a school. Some whale and cod are found.

ST MICHAEL. (For names see Territorial Alphabetical List.) Pop 371. A military post, wireless station and army telegraph and cable office and wintering and transfer port for the various transportation and trading companies on the Yukon River. It is situated on an island of the same name, 124 m se of Nome and 85 ne of the mouth of the Yukon. Was first settled by the Russians in 1835 and named Michaelovsky. The Greek and Catholic churches both maintain active missions here, with native schools in connection. All Nome steamers touch here on their way south. The winter mail is transported by dog teams from Fairbanks.

ST PAUL. A village on Kodiak Island, originally the Russian capital of Alaska, now known as Kodiak, which see.

ST PAUL ISLAND. See Pribilof Islands.

ST TIMOTHY'S. (For names see Territorial Alphabetical List.) A recently established p o near Dempsey.

SAFETY. See Port Safety.

SALCHA. A United States Military Cable and Telegraph station located at Salchaket.

SALCHAKET. (For names see Territorial Alphabetical List.) Pop 50. A p o, trading post and stage station, first settled in 1904, on the Chitina-Fairbanks trail at the mouth of the Salcha River, 40 m s of Fairbanks, the nearest banking point. St Luke's Indian Mission is located here.

SANAK. (For names see Territorial Alphabetical List.) A p o on an island of the same name off the Alaska Peninsula, 600 m sw of Seward, the nearest banking point, 150 ne of Unalaska and 100 sw of Unga. Has a Greek Catholic church. Mail, semi-monthly.

SAND POINT. Pop 60. A p o and trading post, also called Humboldt Harbor, first settled in 1878, on Popof Island in the Alaska Peninsula, 1200 m w of Juneau and 350 m sw of Seward, the nearest banking point. It is the center of the principal cod-fish banks, and quartz and placer mining is also carried on in the vicinity. Cattle and blue fox raising are also profitable industries. Mail steamers from Seward and intermediate coast points once a month.

SANITARIUM. (For names see Territorial Alphabetical List.) A p o on Baranoff Island, 15 m s of Sitka. The Russians maintained a hospital here in 1841; now the location of the famous Sitka Hot Springs.

SANTA ANNA. A fishing settlement 40 m se of Wrangell, the nearest banking point and p o.

SATURDAY CREEK. A mining settlement on a creek of the same name near Nome, the banking, shipping point and p o.

SAXMAN. A disc p o 95 m se of Wrangell and 15 sw of Ketchikan, now the nearest p o.

SCOW BAY. A settlement 4 m s of Petersburg, its nearest banking, shipping point and p o.

SEALEVEL. A mining camp, settled in 1897, on Revillagigedo Island, near the head of Thorne Arm. It is 260 m se of Juneau and 24 w of Ketchikan, its nearest banking point, steamboat landing and p o. Gokatchen Creek furnishes power to operate stamp mills and concentrators. The gold found in the vicinity is mostly of free milling variety.

SELDOVIA. (For names see Territorial Alphabetical List.) Pop 300. A p o and village, first settled in 1880, on Kachekmak Bay, an arm of Cook Inlet, 740 m sw of Juneau and 140 sw of Seward, the banking point. Mail steamers plying between Cook Inlet, Juneau and Seattle stop here weekly. The principal industry is fishing, although coal of high grade is being mined in the vicinity.

SEMIAHMOO. A settlement on Unalaska Island. Unalaska is the nearest p o.

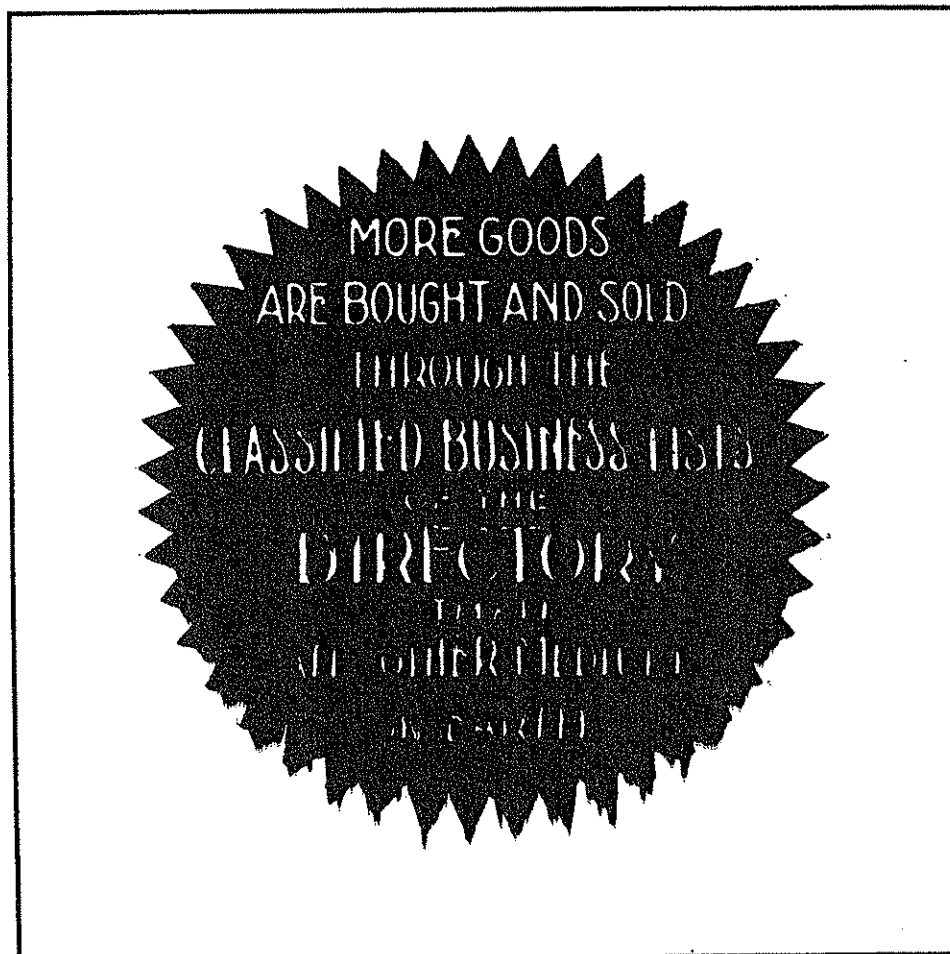
SEMICH ISLAND. One of the Near Islands, comprising the most westerly of the Aleutian group in Southwestern Alaska.

SEMISOPOCHNOI ISLAND. One of the Rat Islands of the western Aleutian group.

SENATI CAMP. A landing on the Yukon River, 20 m w of Fort Yukon, the nearest p o.

SEVENTY-MILE. A mining district on a river of the same name which empties into the Yukon at Star. Eagle, 15 m s, is the boat landing, supply point and p o.

SEVOOKOK. Native name of Gambell, which see.



City of Seward

SEWARD. "The Gateway to Alaska." Pop 1200. An incorporated city situated at the head of Resurrection Bay, one of the most perfect and deep all year round harbors on the Pacific Coast, with facilities for handling the largest of vessels. It is the tidewater terminal of The Alaska Railroad. It is 735 miles west of Juneau and 1604 miles northwest of Seattle via the inside steamer route.

In addition to being the gateway to interior Alaska, through which all the commerce over the railroad must pass, Seward is the distributing point for all freight and supplies going into Western Alaska, consisting of the Alaska Peninsula and the



"LOOP" DISTRICT, ALASKA RAILROAD

Aleutian Islands. It is also the outfitting point for big game hunters and sportsmen going into the big game country of Kenai Peninsula and Kadiak Island, the home of the Kodiak bear and Kenai moose; at this point guides and all necessary supplies can be obtained.

Lying back of Seward and tributary is the whole of the great Kenai Peninsula, rich in natural resources. There are many quartz and placer properties in operation in this region. The Peninsula has great forests of timber for lumber and paper pulp purposes. In other parts of the Peninsula there are thousands of acres of agricultural and grazing lands.

Seward has a daily paper. The Seward Gateway, electric light and water system, telephone service, bank, department store. Standard Oil Co distribution station, salmon cannery, cold

storage plant, two saw mills, two machine shops and garages; and all lines of retail business are represented, with two excellent hotels and a number of smaller ones.

It has one of the most beautiful natural locations in the world and has a very temperate climate, ranging from 60 to 90 degrees above zero in summer, never dropping lower than 7 degrees below in the winter, with an annual precipitation of 45 inches.

City Officials

Mayor—L V Ray

City Clerk and Magistrate—Wm H Whittlesey

City Attorney—H L Smith

City Treasurer—Sylvia Sexton

Councilmen—S F Adelman, H E Ellsworth, Chas Krefting, Chas Cooper, Carl Orlander

Health Officer—J H Baughman

Chief of Police and Fire Dept—John Walker

Firm Abbreviations

RBLCo—Resurrection Bay Lbr Co

The ARR—The Alaska Railroad



MOUNTAINS, PRINCE WILLIAM SOUND

POLK'S
Buyers' Guide
of
Seward, Alaska
1923-24



Representing the Business,
Commercial and Manufacturing
Interests of the City

ALASKA SHOP

O. C. SHALLERER Owner and Manager

ALASKA PHOTOS AND CURIOS
Ivories, Moccasins, Indian Baskets



Eastman Kodaks and Supplies
Developing and Printing
Periodicals, Stationery and Phonographs
Candies and Ice Cream Soda
Alaska Scenic Views and Alaska Books

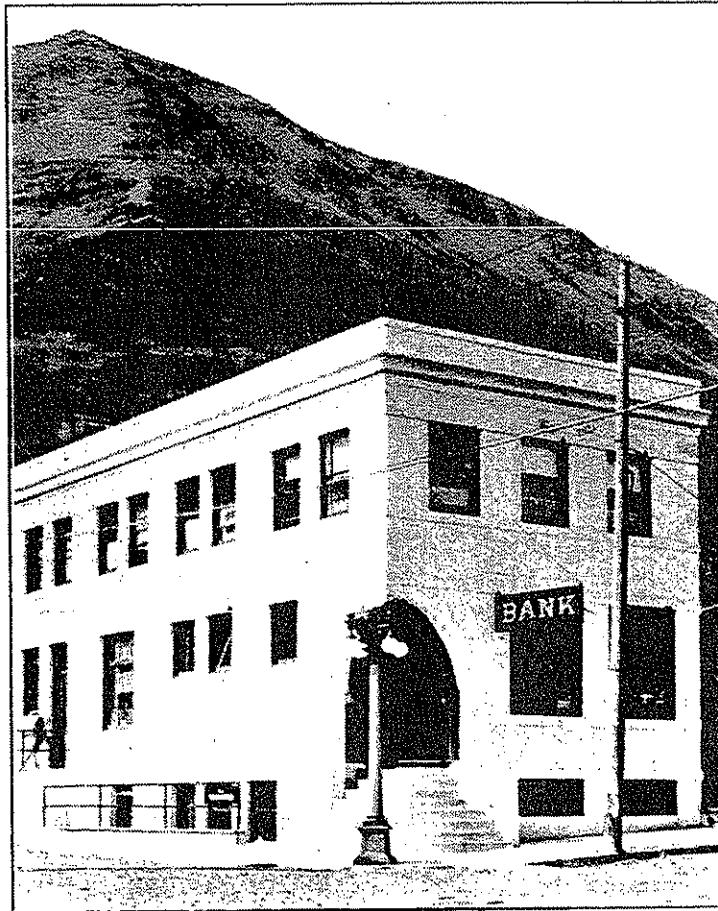
Mail Orders Receive Prompt Attention

SEWARD

ALASKA

CHAS. E. BROWN, President
H. S. BALDERSTON, Vice-President

C. C. HINDE, Cashier
I. WAUGH, Asst. Cashier



Bank of Seward

ESTABLISHED 1905

CORRESPONDENTS

NEW YORK

Chase National Bank
Harriman National Bank

SAN FRANCISCO

Crocker National Bank

SEATTLE

First National Bank
National Bank of Commerce
Seattle National Bank
Dexter Horton National Bank

"The Paper That Puts the Punch in Seward"

THE
**SEWARD DAILY
GATEWAY**

SEWARD, ALASKA

As an advertising medium the Seward Daily Gateway from its circulation reaches ALL the buying power in Western and Southwestern Alaska.

**WHEN YOU THINK ALASKA THINK OF SEWARD
AND THE DAILY GATEWAY**

The Saturday Gateway Carries a Complete Resume of Alaska's Fur Farms, Homesteads, Mines and Fisheries

ALL HOME PRINT

EIGHT PAGES

**THREE DOLLARS THE YEAR
BUT WORTH AN HUNDRED**

Seward's Bank Deposits Average \$5,161 Per Capita
The Wealthiest Spot in the World

The Seward Daily Gateway

\$12.00 PER YEAR

SEWARD

ALASKA

LEON URBACH

Hart Schaffner & Marx Clothes

MEN'S FURNISHINGS AND SHOES
STETSON HATS HOLEPROOF HOSIERY
BUCKINGHAM AND HECHT SHOES
LIKLY LUGGAGE
FILSON'S WATERPROOF CLOTHING
HIPRESS WHITE RUBBER SHUPACS
PUSSELL MOCCASINS
SPORT, FISHERMEN'S, HUNTING
AND OUTING WEAR

SEWARD

ALASKA

Hugh Dougherty

REAL ESTATE

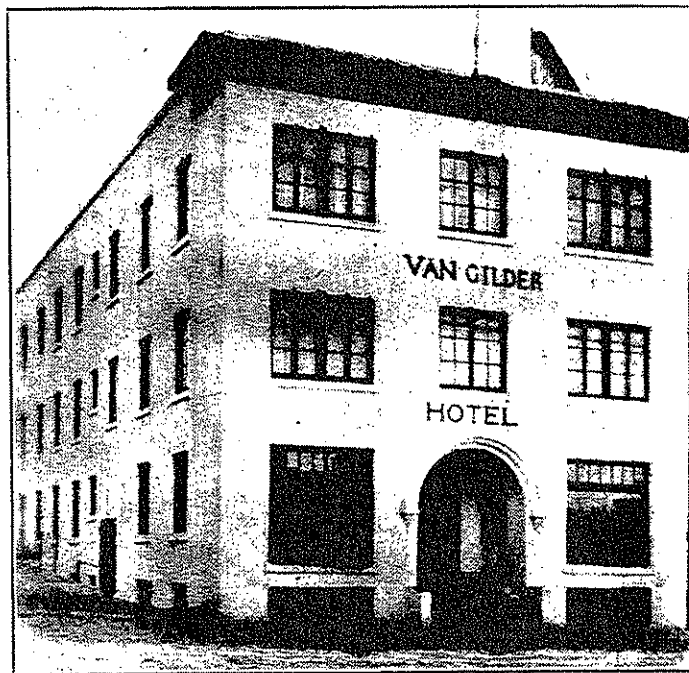
SEWARD

ALASKA

VAN GILDER HOTEL

SEWARD, ALASKA

J. S. BADGER, Owner and Manager



**A MODERN FIREPROOF HOTEL
HEATED BY HOT WATER**

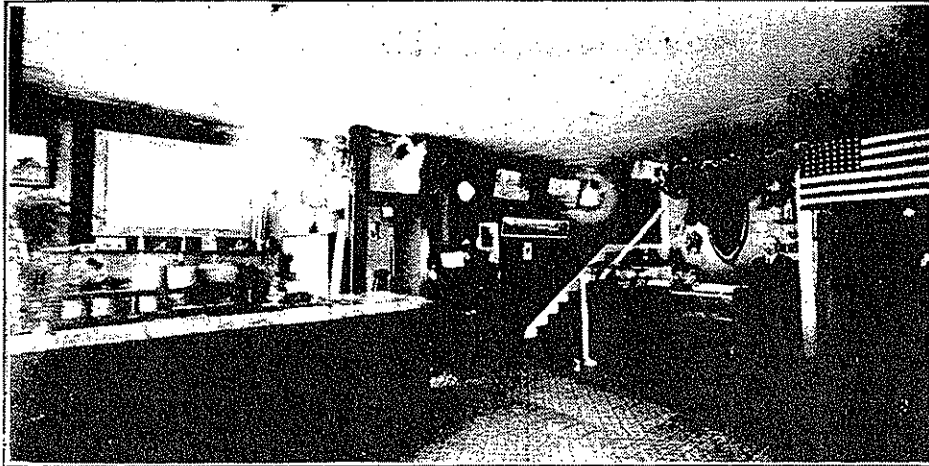
Headquarters for
**BIG GAME HUNTERS, MINING MEN,
TOURISTS**

The Gateway to the Kenai Game Country

Hotel Sexton

GEORGE SEXTON, Propr.

SEWARD'S HOMEY HOTEL



"WHERE THE OLD TIMERS MEET"

General Information Furnished

Twenty-One Years' Residence in Alaska

SEWARD, ALASKA

SYLVIA'S PLACE

SYLVIA SEXTON, Propr.

CONFECTIONERY and TOBACCOS

Ice Cream and Sodas a Specialty

DEVELOPING

PRINTING

ENLARGING

FRAMING

SEWARD

ALASKA

CAL M. BROSIUS

LUMBER
SPRUCE, FIR, CEDAR AND
HARDWOOD

C M B

Lime, Plaster and Cement,
Chimney Brick, Arch and
Fire Brick
Dodge Line Transmission
Machinery
Belting and Pulleys

Sash,
Doors,
Windows,
Mouldings,
Finish,
Shingles,
Lath,
Cabinet
and
Millwork
Port Blakely
Lumber

Sheet
and
Plate
Glass,
Paints,
Oils,
Builders'
Hardware,
Building
Paper,
Galvanized
Iron Roofing,
Johns-
Manville
Shingles

C. E. ORLANDER

JEWELER



Resurrection Bay, Seward

TERMINUS OF THE ALASKA RAILROAD

The Gateway to The Interior, Where Water and Rail Meet

SEWARD

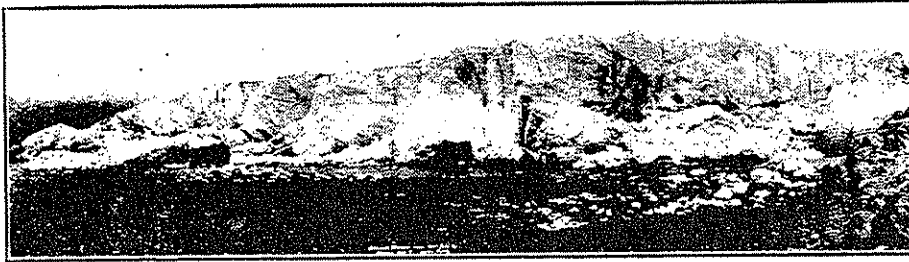
ALASKA

Nugget Jewelry
Carved Ivory
Attu Baskets
Indian Relics
Alaska Curios
Silverware
Cut Glass
Optical Goods
Watchmaker
Souvenirs

SEWARD DRUG COMPANY

ELWYN SWETMANN AND P. C. McMULLEN

The Rexall Store



Spencer Glacier—On Alaska R. R. Near Seward

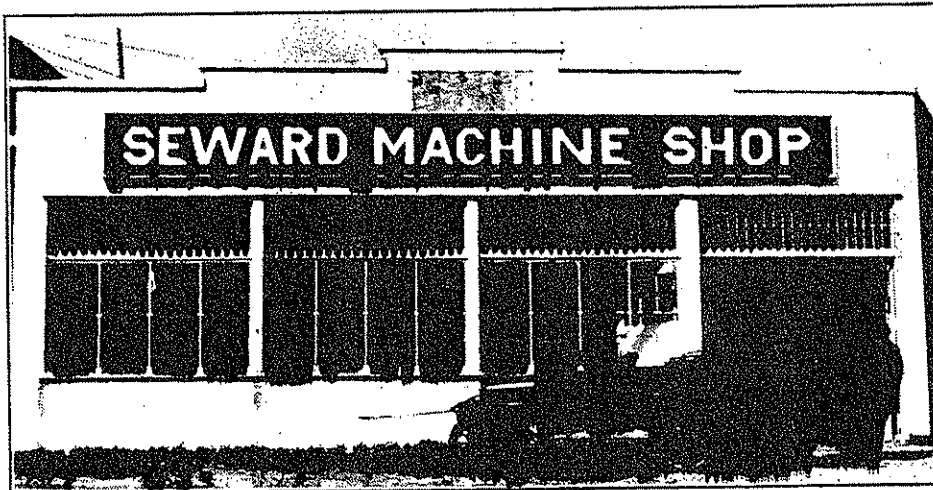
Alaska Books, Pictures, Curios and Souvenirs
Attu Baskets, Ivory Carvings and Indian Relics

Correspondence Solicited

SEWARD, ALASKA

SEWARD MACHINE SHOP

CHAS. LECHNER, Propr.



Authorized Ford Sales and Service

Agency Studebaker Automobiles

Sanitary Engineering, Heating Installations, Sheet Metal Works,
Ventilating Plants, Gas Engines, Halibut Boat Repairs, Automobile
Repairs, Saw Mill Repairs, Marine Engine Installing, Overhauling
and Repairs

SEWARD

ALASKA

SEWARD STEAM LAUNDRY

HARRY KAWABE, Propr.

LAUNDERING AS IT SHOULD BE DONE

Our Business Is the Laundering of
SHIRTS AND COLLARS
FLAT WORK

—————
SUITS PRESSED AND CLEANED
DRY CLEANING

—————
Service and Promptness of Delivery
Our Hobby

SEWARD

ALASKA

Your Advertisement Here—

Would Be Constantly Before The Public—The Buyers—Twenty-four Hours a Day—Three Hundred and Sixty-five Days a Year—Every Year.

—*Think It Over*

SEWARD ALPHABETICAL LIST OF NAMES

Abrams John L dep colr U S customs
 Adelman Stephen F dairy
 Alaska Cafe (F J Finn)
 Alaska House The (John Dubreuil)
 Alaska Railroad The
ALASKA SHOP (O C Shallerer), Eastman Kodaks and Sup-
plies, Alaska Photos and Curios, Periodicals, Stationery,
Phonographs, Candies and Ice Cream Sodas (See p 382)
ALASKA STEAMSHIP CO, J H Flickinger Agt
 Alaska Transfer (H V Hoban A F Davis)
 Almqvist Gust lab The ARR
 Amby Peter F lab The ARR
 American Legion Seward Post No 5 meets 2d and 4th Tues-
 days Elwyn Swetmann com A E Rucker adj
 Anderson Algat restr wkr A A Anderson
 Anderson Alvida A restr
 Anderson Chas firemn San Juan Fishing & Pkg Co
 Anderson Peter M supt Seward Light & Power Co
 Anrig Wm eng San Juan Fishing & Pkg Co
 Ansen Ole longshoremn The ARR
 Arntsen Leonard fishermn
 Ashton Anna E Mrs dry gds
BADGER J S, Owner and Mgr The Van Gilder Hotel
 Baker W G lab The ARR
BALDERSTON H S, V-Pres Bank of Seward, r Anchorage
 Banbury Emma Mrs (Ogle & Banbury)
 Banbury M S chkr The ARR
BANK OF SEWARD, Established 1905, Chas E Brown Pres,
H S Balderston V-Pres, C C Hinde Cashr, I Waugh Asst
Cashr (See p 383)
 Bates Lewis
 Baughman Beatrice S student
 Baughman John A phys
 Beck Andw driver
 Beck Stanley E chf eng San Juan Fishing & Pkg Co
 Benson Chas A (The Northern)
 Bent Edw mariner San Juan Fishing & Pkg Co
 Bern Chas O whsemn
 Birge Geo lab The ARR
 Bishop Forrest E clk U S Bureau Pub Roads
 Bishop L W fox breeder
 Bliton Sidney opr U S Cable Office
 Blue Wayne agt Pacific Steamship Co
 Bolan Alex forest ranger
 Borgen Gustave W gro
 Bowen W S dept mgr Brown & Hawkins Corp
 Braaffadt Ole A dentist
 Bradshaw Archie (RMS)
 Brison J carp SOCo
 Brocher M A carp SOCo
 Brooks R opr U S Radio Sta

SEWARD—Continued

BROSIUS CAL M, Lumber, Spruce, Fir, Cedar and Hardwood,
Lime, Plaster and Cement, Sash, Doors, Mouldings and Mill-
work, Paints, Oils, Glass and Builders' Supplies (See p 388)

Brown Anna Indy

Brown Asa millwkr RBLCo

BROWN CHARLES E, Pres Brown & Hawkins Corp, r An-
chorage

BROWN & HAWKINS CORP, Chas E Brown (Anchorage)
Pres, T W Hawkins Treas, Gen Mdse (See p 43)

Bryan Wm v-pres Resurrection Bay Lbr Co

BUCKINGHAM & HECHT SHOES, Leon Urbach Distributor

Buhoup J W lab The ARR

Burns Chas longshoremn The ARR

Byrne Catherine

Carlson A

Carlson C A plstr C M Brosius

Carlson T lab SOCo

Chamberlain Ell E miner

Chatham Peter (Marathon Cafe)

CHENEY NECKWEAR, Leon Urbach Distributor

Christensen Saml lab The ARR

Clague Chas lab RBLCo

Clark S W driver

Clemens H T watchmn San Juan Fishing & Pkg Co

Clinton Jas A miner

Coates Bessie

Collier H eng RBLCo

Colter Peter lab RBLCo

Colwell Geo W rdmaster The ARR

Colwell S L Mrs

Cooper Chas C clk

Cooper Rhoda J (wid Jacob)

Coppernoll Wm lawyer

Corbett Jas carp SOCo

Corson Grace Mrs

Cotter Geo G game warden

Cox Geo lab The ARR

Craig W G opr U S Radio Sta

Crane D W lab The ARR

Crawford Edw A tmstr

Crawford Walter lab

Daykin Wallace driver

Dahl Robt millwkr RBLCo

David Leopold (Ray & David) r Anchorage

Davis Allan F (Alaska Transfer)

Davis Nettie Mrs Indy

Davis Wm prospector

Davis W M carp SOCo

Denny Leslie B eng

Devine Geo B miner

DeWitt Wm E guide

DonCarlos Nellie Mrs

DOUGHERTY HUGH, Real Estate and Insurance (See p 385)

Drayton Thos B writer
 Driscoll J J lab The ARR
 Dryden Wm S gro
 Dubreuil John (The Alaska House)
 Dunlap R V B Rev pastor Methodist Episcopal Ch
 Dyer Thos lab The ARR
 Dykstra Carrie Mrs clk Mrs Jessie Ellsworth
 Eames Alvah chf clk and insp PO
 Eamon Gerald firemn
 Eamon Jos A cook
 Eide Anton asst supt Alaska Road Commission
 Ekman Erick lab The ARR
 Ellsworth Harry E garage
 Ellsworth Jessie Mrs dry gds
 Ellsworth Thelma B music tchr
 Elwell Luke clk Brown & Hawkins Corp
 Emswiler Chas guide
 Ericson Aron pntr
 Erwin Wm C whsemn SOCo
 Evanow Chris lab The ARR
 Fairman Wm watchmn RBLCo
 Fenton Warren G civil eng
 Ferguson John miner
 Ferluga Gus lab San Juan Fishing & Pkg Co
 Findysz Stanley lab The ARR
 Finn F J (Alaska Cafe)
 Fisher Geo W lab The ARR
FLICKINGER J H, Agt Alaska Steamship Co
 Flower John H longshoremn The ARR
 Flynn W W foremn The ARR

**FORD AUTOMOBILES SALES AND SERVICE, Seward
Machine Shop**

Fowle Frank miner
 Fredrick Geo lab The ARR
 Fridell I J miner
 Frye-Bruhn Co Wm C Scott mgr meats
 Gagnon W C mgr Seward Hotel
 Gallegly J H lab SOCo

**GATEWAY PUBLISHING CO, H B Selby Owner and Mgr,
Publishers Seward Gateway (See p 384)**

Geary Wm steward San Juan Fishing & Pkg Co
 Gereasemoff Jos ship clk Brown & Hawkins Corp
 Gerst Robt lab
 Gilpatrick John C watchmn The ARR
 Gleason Frank carp SOCo
 Goff Owen lab San Juan Fishing & Pkg Co
 Graef Jacob L hdw
 Graft S M mgr Seward Light & Power Co
 Griffith Benj lab The ARR
 Griffiths Lydia Mrs
 Guest Robt longshoremn The ARR
 Hackey Jerome lab The ARR

SEWARD—Continued

Hadley May Mrs
 Hagen M cook The ARR
 Hagen Nels foremn The ARR
 Haines O F logger RBLCo
 Haines Walter lab The ARR
 Hakanson Fred cannery wkr
 Hall C W (Overland Hotel)
 Hall Emory lab The ARR
 Halvorsen Carl miner
 Hambright Thos prospector
 Hanhauser Leo miner
 Hanisch Paul Indy
 Hannon J P
 Hardy Loyd lab
 Hargord Isaac carp
 Harlen Jas lab The ARR
**HART SCHAFFNER & MARX CLOTHES, Leon Urbach Dis-
 tributor**
 Hartsough Earl logger RBLCo
HAWKINS T W, Treas Brown & Hawkins Corp
 Hazel Edwin mariner San Juan Fishing & Pkg Co
 Heacock E J chkr The ARR
 Heacock Theodore
 Henderson G C mgr San Juan Fishing & Pkg Co
 Henning Carl tlr
 Henrikson Harry V eng
 Higgins Bert miner
**HINDE C C, Cashr Bank of Seward, Treas Seward Chamber of
 Commerce**
 Hoban V (Alaska Transfer)
 Hofman Jos S (Hotel Belmont)
 Holben M E (Seward Grill)
 Holben Walter R lab The ARR
 Holland Frank clk Frye-Bruhn Co
 Horn F W radio opr San Juan Fishing & Pkg Co
HORNER MEL A, Guide
 Horton Andw wharfinger The ARR
 Horton Henry lab
 Hotel Belmont (J S Hofman)
**HOTEL SEXTON (George Sexton), Seward's Homey Hotel,
 "Where the Oldtimers Meet" (See p 387)**
**HOTEL VAN GILDER, J S Badger Owner and Mgr, Head-
 quarters for Miners and Hunters (See p 386)**
 Hubschmidt John lab RBLCo
 Hunt F asst eng San Juan Fishing & Pkg Co
 Husvick Arthur fishermn
 Hutton Mabel Mrs clk
 I O O F Hall
 I O O F Resurrection Lodge No A-7 meets Thursdays at 8
 p m Gerhard Johnson N G Chas Lechner sec
 I O O F Seward Rebekah Lodge No 6-A meets 1st and 3d Mon-
 days Rhoda Cooper N G Vida Rich sec

Ingold E L lab The ARR
 Jacobs Michl A lab The ARR
 Jacobsen Ingwald lab San Juan Fishing & Pkg Co
 Jacobsen Wm T lab The ARR
 James Bennet F miner
 Jansen Chas H chf eng San Juan Fishing & Pkg Co
 Jenicke Chas baker Seward Bakery
 Jerry Nicholas lab
 Johansen O A master mariner San Juan Fishing & Pkg Co
 Johanson Martine Mrs tel opr Seward Light & Power Co
 Johanson Waldemar lab The ARR
 Johnson Carl lab The ARR
 Johnson Caspar lab The ARR
 Johnson Gerhard plstr C M Brosius
 Johnson Harry lab The ARR
 Johnson Helmar lab The ARR
 Johnson John fishermn
 Johnson Steven S lab SOCo
 Johnsrud Gilbert lab The ARR
 Johnston Chas miner
 Johnston J D miner
 Johnston Robt W eng The ARR
 Jones Thos clk Brown & Hawkins Corp
 Jordan Jason J clnr
 Judy R L lab SOCo
 Kaauki Paul cannery wkr
 Kadiak Island Fishing & Packing Co Inc H O Roberts pres
KAISER WM (Lucas & Kaiser), Guide
 Kalles Jas lab The ARR
 Kanas Michl lab The ARR
KAWABE HARRY (Seward Steam Laundry)
 Kazahaya Frank cook San Juan Fishing & Pkg Co
 Keane Thos lab The ARR
 Keatley Thos lab SOCo
 Kelleher M lab The ARR
 Kern Geo logger RBLCo
 King Thos blksmith
 Kirkpatrick L E lab SOCo
 Klette Ernest F mariner San Juan Fishing & Pkg Co
 Kline J E lab SOCo
 Knott Arthur C restr wkr Marathon Cafe
 Koford Henry billiards
 Kontas Michl lab The ARR
 Krefting Chas carp
 Lake Alex mariner San Juan Fishing & Pkg Co
 Lalais Peter mach The ARR
 Lannigan P J logger RBLCo
 Laroche Camille saw mill
 Larsen Christ cigars
 Larsen Ludvig guard U S jail
 Larson Aug miner
 Larson C W carp SOCo
 Larson Henry lab The ARR

SEWARD—Continued

Larsson Albt messr U S Cable Office

Laughlin Geo T

Lawson Edw

Lawson R S millwkr RBLCo

LECHNER CHARLES (Seward Machine Shop)

Lechner Harry mach Seward Machine Shop

Lee Lewis foremn The ARR

Leslie Elsie F musician

Leslie Frank E foremn The ARR

Lewis Ray O barber

Liberty Theatre (C A Tecklenberg)

Lieble Louis longshoremn The ARR

LINCOLN AUTOMOBILES, Seward Machine Shop Distributors

Lindsey Edw car insp The ARR

Lippert P D lab The ARR

Lohr Andw lab RBLCo

Long Geo C miner

Long Howard carp C M Brosius

Lorang Theo P dept mgr Brown & Hawkins Corp

Loughlin G J rancher

Lovgren Arthur lab The ARR

L O O M Seward Lodge No 1425 meets every Tuesday 8 p m

Chas Krefting dictator M A Horner sec

LUCAS HENRY (Lucas & Kaiser) Guide

Lucas W T purser San Juan Fishing & Pkg Co

Lucas & Kaiser (Henry Lucas Wm Kaiser) fox breeders

Lund Edw lab RBLCo

Lundblad S (Seward Fish Co)

Lynbar Michl longshoremn The ARR

McAllister Louis cook The ARR

McConnell Jas millwright RBLCo

McCrorie Francis lab The ARR

McCulgon Geo longshoremn The ARR

McEachen D J longshoremn The ARR

McGregor J H lab The ARR

McIntosh Edith M clk Seward Bakery

McIntosh Robt cigars

McLeod Angus cook The ARR

McManus Meryl L clk

McMULLEN P C (Seward Drug Co), Mgr Seward Undertaking Co

McNally Richd L opr U S Cable Office

McPherson H A chkr The ARR

McPherson J A rancher

Magris Gust cannery wkr

Major E W cook RBLCo

Major Lottie Mrs wtrs Marathon Cafe

Malloy Bessie M Mrs public sten

Malloy Michl B (Seward Express)

Manthey Gustav R wharfinger The ARR

Manthey Louise Mrs

Manthey Robt G lab The ARR
 Manthey Wm lab RBLCo
 Marathon Cafe (Peter Chatham)
 Martin Frank lab The ARR
 Martenides Fred lab The ARR
 Mason Violet
 Masonic-Seward Lodge No 219 F & A M. Stated communica-
 tions 1st and 3d Wednesdays W O Perry W M C E Smith sec
 Masonic-Seward Chapter No 10 O E S meets 2d and 4th Mon-
 days at 8 P M Clara Perry W M Esther Dougherty sec
 Matatall Jas logger RBLCo
 Mathison M W fishermn
 Mattich John (The Palace)
 Maurits Torring lab The ARR
 Mavros Geo lab San Juan Fishing & Pkg Co
 Mavros Gus lab San Juan Fishing & Pkg Co
 Mead Mae
 Melvin H B logger RBLCo
 Merrill R L longshoremn The ARR
 Methodist Episcopal Church Rev R V Dunlap pastor
 Metzger Henry lab C M Brosius
 Meyer Albt H acct
 Michaelson Peter lab
 Michel Morris
 Miller Fred C barber
 Miller Julius cook The ARR
 Monahan P J lab The ARR
 Moody A M lab SOCo
 Moore F B paints
 Moren Harry boommn RBLCo
MORFORD CURTIS R, U S Commissioner
 Morrisey Betty
 Moultray W E spl agt SOCo
 Mount Earl shoemkr
 Muller Julian firemn San Juan Fishing & Pkg Co
 Muller Moses wtr San Juan Fishing & Pkg Co
 Murphy Thos P lab
 Murray Jas C miner
 Neilsen Hermon lab The ARR
 Nelson Carl
 Nelson Fred lab SOCo
 Nelson Gust lab The ARR
 Nelson John foremn The ARR
 Nelson John A mgr Seward Water & Power Co
 Neville Roy A longshoremn The ARR
 Neville Thos foremn The ARR
 Neville Wm N mach
 Newman Jas longshoremn The ARR
 Nicolich Matt foremn San Juan Fishing & Pkg Co
 Noel Milton S longshoremn The ARR
 Nordyke Louis lab San Juan Fishing & Pkg Co
 Norman John miner
 Northern The (C A Benson E L Whittemore) billiards

SEWARD—Continued

Novak Andw expmn
 Novak Paul driver Andw Novak
 Nygard Paul lab The ARR
 Nyman Peter firemn San Juan Fishing & Pkg Co
 Ogle Mina Mrs (Ogle & Banbury)
 Ogle Peter M driver
 Ogle & Banbury (Mina Ogle Emma Banbury) dry gds
 O'Hagen Michl lab The ARR
 O'Hara Thos logger RBLCo
 Olnhauser Leo lab The ARR
 Olson Alfred lab The ARR
 Olson John W lab The ARR
**ORLANDER C E, Jeweler, Watchmaker, Nugget Jewelry,
 Carved Ivory, Alaska Curios, Attu Baskets, Indian Baskets,
 Relics and Souvernirs, Optical Goods, Cut Glass and Silver-
 ware (See p 388)**
 Osbo Thorwold linemn Seward Light & Power Co
 O'Shaughnessy Chris lab The ARR
 Overland Hotel (C W Hall)
 Pacific Steamship Co Wayne Blue agt
 Paeben Henry C miner
 Paepile Moses cook San Juan Fishing & Pkg Co
 Painter Harold receiving agt The ARR
 Palace The (John Mattich) billiards
 Parker Lawrence H eng RBLCo
 Patterson Geo W cabt mkr
 Patterson Wm expmn
 Paul John longshoremn The ARR
 Paulson Jas fox breeder
 Paulstemer John lab C M Brosius
 Pearson Victor lab The ARR
 Pekovich Peter lab The ARR
 Perry J E (Skagway House)
 Perry Willis O opr in chg U S Cable Office
 Petersen Paul carp
 Peterson Gustav A carp
 Peterson Peter lab The ARR
 Peterson Peter H carp C M Brosius
 Phelps Geo (Seward News Co)
 Philip S E mill wkr RBLCo
 Pioneers of Alaska Igloo No 9 meets 2d and 4th Fridays in Odd
 Fellow's Hall C M Brosius pres Earl Durgin sec
 Pocus Paul lab The ARR
 Prosser John D chkr The ARR
 Quinn R G lab SOCo
 Rally Thos longshoremn The ARR
 Ralph John rancher
 Ramsey Fred H mariner San Juan Fishing & Pkg Co
 Rasmussen M J S Mrs
RAY LEROY V (Ray & David) Mayor of Seward
RAY & DAVID (L V Ray Leopold David) Lawyers
 Rayl Timothy lab The ARR

Reed Earl G mach
 Reed Ralph dep U S Marshal
 Reese Emma bkpr Brown & Hawkins Corp
 Reher John B highway eng U S Bureau Public Roads
 Resurrection Bay Lumber Co Inc L H Vogl pres Wm Bryan
 v-pres C E Shea sec
REXALL STORE THE, Seward Drug Co (See p 389)
 Rich Vida clk
 Rich W W barber
 Richards Henry lab The ARR
 Richards Jos tmstr
 Richardson N N clk The ARR
 Riley T lab SOCo
 Roberts H O pres Kadiak Island Fishing & Packing Co
 Robertson Jas C watchmn Seward Light & Power Co
 Robinson Verne logger RBLCo
 Rockwell Martin saw mill
 Rocky Harry H miner
 Rogers Albt carp
 Rogers Edw carp
 Romig Jos H phys
 Ronk Michl lab SOCo
 Root Mary F asst post master
 Root Wm E post master
 Rosenholm Gus logger RBLCo
 Rosness John J eng
 Roy Amanda
 Roycroft Leora cook The ARR
**RUCKER AARON E, Attorney-at-Law, Agt Resurrection Bay
 Lumber Co, Sec Seward Chamber of Commerce**
 Rynning Andw lab The ARR
 St Peters Episcopal Church
 San Juan Fishing & Packing Co G C Henderson mgr
 Sargent Morris asst eng San Juan Fishing & Pkg Co
 Schlosser Matt millwkr RBLCo
 Schmitt Geo (Seward Bakery)
 Schwern Irving millwkr RBLCo
 Schwertfeger Aug W watchmn RBLCo
 Scott Wm C mgr Frye-Bruhn Co
 Seferovich Matt lab
 Seifel John longshoremn The ARR
**SELBY HARRY B, Editor Seward Daily Gateway, Mgr Gate-
 way Publishing Co**
SELBY HARRY B JR, Radio Operator U S Signal Corps
SELBY THOMAS J, Printer Gateway Publishing Co
 Seward Bakery (Geo Schmitt)
**SEWARD CHAMBER OF COMMERCE, Wm H Whittlesey
 Pres P C McMullen V-Pres, Aaron E Rucker Sec, C E
 Hinde Treas**
**SEWARD DAILY GATEWAY, H B Selby Editor and Owner
 (See p 384)**

SEWARD—Continued

SEWARD DRUG CO (P C McMullen, Elwyn Swetmann), The
Rexall Store, Alaska Books, Pictures, Curios and Souvenirs,
Attu Baskets, Ivory Carvings and Indian Relics (See p 389)

Seward Express (M B Malloy)

Seward Fish Co (S Lundblad) whol

Seward Grill (M E Holben)

Seward Hotel W C Gagnon mgr

Seward Light & Power Co S M Graft mgr

SEWARD MACHINE SHOP (Chas Lechner), Authorized
Ford Sales and Service, Gas Engines, Halibut Boat Repairs,
Automobile and Saw Mill Repairs, Sheet Metal Works and
Sanitary Engineering (See p 389)

Seward News Co (Geo Phelps)

Seward Public School

SEWARD STEAM LAUNDRY (Harry Kawabe), Service and
Promptness of delivery Our Hobby (See p 390)

SEWARD UNDERTAKING CO, P C McMullen Mgr

Seward Water & Power Co J A Nelson mgr

SEXTON GEORGE (Hotel Sexton)

SEXTON HOTEL (George Sexton) Seward's Homey Hotel
"Where the Oldtimers Meet" (See p 387)

SEXTON SYLVIA ("Sylvia's") City Treasurer

SHALLERER O C (Alaska Shop)

Shay Gordon dep U S Marshal

Shay John eng

Shea Claude G

Shea C E sec Resurrection Bay Lbr Co

Shea Gorden guard U S Jail

Shellhorn F W wtr San Juan Fishing & Pkg Co

Shellhorn Wm R electn Seward Light & Power Co

Siebel Marie clk Seward Bakery

SIMONS ANDREW, Guide

Sishiyama Geo clk

Skagway House (J E Perry)

Skeen Frank P lab The ARR

Slater John B miner

Slayton Paul W opr in chg U S Radio Sta

Smith Chas E opr U S Cable Office

Smith John lab The ARR

Smyth A J eng

Standard Oil Co W E Moultray spl agt

Stanton J B dept mgr Brown & Hawkins Corp

STETSON HATS, Leon Urbach Distributor

Stiefel John lab The ARR

Storey Buell farmer

Stotko Anna (wid John) confr

Straubinger Frank lab The ARR

STUDEBAKER AUTOMOBILES, Seward Machine Shop Dis-
tributors

Stump Park S carp SOCo

Suits Carrie Mrs

Sullivan John D clk P O

Swan Lloyd logger RBLCo
 Swanson Peter lab The ARR
 Swanson Swan lab
 Sweek E L agt The ARR
 Sweers Theo watchmn The ARR
SWETMANN ELWYN (Seward Drug Co)
"SYLVIA'S" (Sylvia Sexton), Candy, Sodas, Cigars, Periodicals,
Souvenirs, Curios and Postals, Photo Developing, Printing,
Enlarging and Framing (See p 387)
 Tallasen Sylvia Mrs
 Taylor H C gard
 Taylor John logger RBLCo
 Tecklenberg Chas A (Liberty Theatre)
 Teitsworth Fred longshoremn The ARR
THEDE EDWARD A, Mechanical Engineer, P O Box 107
 Thoday A Henry carp SOCo
 Thoday Edith Mrs tel opr Seward Light & Power Co
 Thompson M M lab The ARR
 Thorkilsen Geo gen repr
 Tobin Geo farmer
 Tuttle J E chkr The ARR
 Tyer Donald H printer Seward Daily Gateway
TYER RUTH MRS, Bkpr Gateway Publishing Co
 U S Bureau of Public Roads J B Reher highway eng
 U S Cable Office W O Perry opr in chg
 U S Radio Station P W Slayton opr in chg
URBACH LEON, Clothier, Men's Furnishings, Hart, Schaffner
& Marx Clothes, Stetson Hats, Cheney Neckwear, Holeproof
Hosiery and Buckingham & Hecht Shoes (See p 385)
VAN GILDER HOTEL THE, J S Badger Owner and Mgr
Headquarters for Miners and Hunters (See p 386)
 Vogle Edw farmer
 Vogle L H pres Resurrection Bay Lbr Co
 Wallner Victor mining eng
 Warner Edw miner
WAUGH I, Asst Cashr Bank of Seward
 Welch Nicholas carp C M Brosius
 Westberg B A lab The ARR
 Weybrecht Emilie B Mrs
 White Caroline tchr
 White G lab SOCo
 Whittemore E L (The Northern)
WHITTLESEY WM H, Lawyer, City Clerk, Pres Seward
Chamber of Commerce
 Wiley Saml lab The ARR
 Wilson Jos miner
 Wilson Jos jr miner
 Woodaman Fred miner
 Woodrow Wm lab RBLCo
 Yacavone J A opr U S Radio Sta
 Yago Harry miner
 York J A lab SOCo
 Zinkoff John lab RBLCo

SEWARD CITY. A mining settlement on Lynn Canal, 60 m nw of Juneau, the nearest banking point, and 25 se of Haines. Amalga is the nearest p o.

SHAGELUK. A native settlement on the Innoko River, 100 m ne of Holy Cross, the nearest p o. A government school for natives is located here.

SHAKAN. (For names see Territorial Alphabetical List.) A p o, first settled in 1884, located on the west coast at the upper end of Prince of Wales Island on Sumner Straits, 70 m w of Wrangell, the nearest banking point, and 120 ne of Ketchikan, also a banking point. Principal industries are fishing, canning, lumber manufacturing and mining.

SHAKTOLIK. Pop 75. A native settlement at the mouth of Bonanza Creek on Norton Sound, 150 m e of Nome, the nearest banking point and 35 n of Unalakleet, the nearest p o.

SHAMAN VILLAGE. A native village on the Yukon River, 60 m ne of Rampart, the nearest p o.

SHEEP CREEK. A wood camp and steamer landing on the Yukon River, near the mouth of Sheep Creek, 30 m n of Eagle, nearest p o.

SHEEP CREEK. Name changed to Thane, which see.

SHELTON. A disc p o and distributing point for camp supplies, first settled in 1900, at the head of navigation on the Kuzitrin River and the northern terminus of the Seward Peninsula Railway, 10 m s of Dahl and 90 n of Nome, the nearest banking point and p o.

SHIP CREEK. A settlement at the mouth of Ship Creek near Cook Inlet. P O name is Anchorage, which see for names.

SHISMAREFF. A disc p o and boat landing on Shismareff Inlet, 240 m n of Nome, banking point, 155 n of Teller, nearest supply point, and 85 nw of Taylor, nearest p o.

SHOPS. A station on W P & Y Route, 2 m n of Skagway, p o and banking point.

SHOVEL CREEK. A mining settlement and station on the Council City & Solomon River R R, 40 m e of Nome, nearest banking point, and 6 n of Solomon, nearest p o.

SHUMAN'S MILL. A landing on the Yukon River, 65 m ne of Rampart, the nearest p o.

SHUNGNAK. (For names see Territorial Alphabetical List.) Pop 95. A p o and native village, also known as Long Beach, settled in 1898, on the Kobuk River, 350 m (air line) ne of Nome, banking point, 250 e of Kotzebue, supply point, 40 n of the Arctic Circle. Protestant Episcopal Church and Friends Mission. Mining, fishing and furs are the principal industries.

SHUSHANA. See Chisana.

SHUSHANNA JUNCTION. P O name is McCarthy, which see for full information.

SIMPSON'S ROADHOUSE. A roadhouse on the Chitina-Fairbanks trail, 60 m n of Chitina, and 247 s of Fairbanks.

SINROCK REINDEER STATION. Located at the mouth of the Sinrock River, which flows into Bering Strait, 35 m nw of Nome, the nearest banking point and p o.

SINUK. A M E missionary station, with rural delivery mail service at the mouth of the Sinuk River, 26 m nw of Nome. A large government Reindeer Reservation and native school is maintained here.

SITKA. (For names see Territorial Alphabetical List.) Pop 1175. An incorporated town of the second class on the side of Baranoff Island, 980 m nw of Seattle, Wn, and 200 m sw of Juneau, the nearest banking point. Settled by Russians in 1802, and called New Archangel. Historically it is the most interesting town in Alaska, and naturally the most picturesque. Has the finest harbor on the Alaskan coast and a very mild climate. The coldest on record is 6 below zero. Has saw mill, canneries, 2 hotels, Episcopal, Presbyterian, Russian Orthodox and Roman Catholic churches. A monthly newspaper, The Verstovian, is published. Has many buildings of interest to travelers, notably the Russian church, over 50 years of age, which contains many costly and ancient paintings and much treasure, and the Sheldon Jackson museum, which contains a very interesting collection of Alaskan curios.

Steamers connect with all Alaskan and Puget Sound points. U S wireless station. Mail 3 times a week during summer and once a week in winter.

SITKA HOT SPRINGS. See Sanitarium.

SITOH BAY. A fishing settlement and cannery on Chatham Strait, 5 m w of Killisnoo, the nearest p o.

SIXTEEN MILE HOUSE. A disc roadhouse on Chitina-Fairbanks trail, 16 m s of Fairbanks, the nearest banking point and p o.



Stability AND Permanency

Do you realize that a City Directory advertisement is a testimonial to the permanency, the stability, of the advertiser?

That's the sort of concern all of us want to patronize, because we know when they sell us merchandise they are behind it in every way, today, tomorrow, and for the years to come.

"Fly-by-night," "fire-sale" and other temporary or "get-rich-quick" concerns rarely appear in the City Directory.

And it is a noteworthy fact that the concerns which advertise one year in the city directory are there again next year. 90% of directory advertising is renewed.

Directory advertising is profitable. In connection with the classified business headings it is doubly effective.

May we explain how and why it will pay you?

R. L. POLK & CO., Inc.

Telephone Main 1626

71 Columbia

Seattle, Wash.