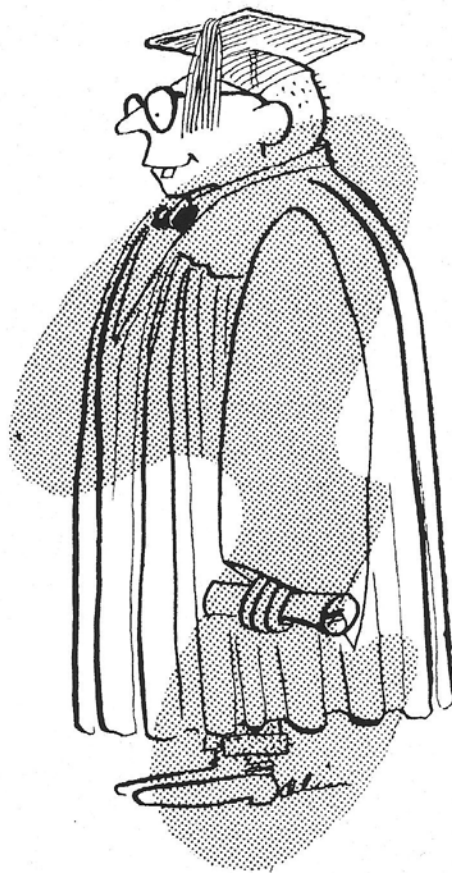


# Seniors





**Loyal D. Burkett**  
Fairbanks, BA, Pres. ASUA, '53, Health Insurance



**Stewart P. Butler**  
New York, Geol. Engr—BA, Pres. ASUA, '56,  
IAC Chairman



**Nicholas J. Chura**  
Menands, New York, Wildlife, Wildlife Club,  
Floor Proctor



**James J. Dougherty**  
Fairbanks, Electrical Engr., AIEE & IRE



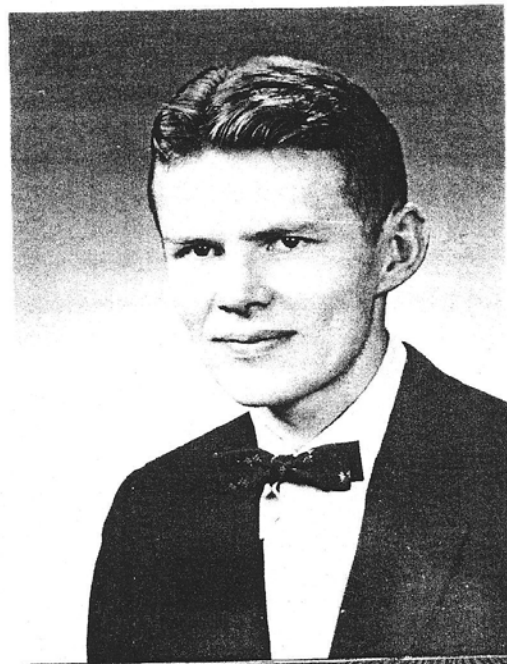
**Sharon Dyer**  
Seward, Educ., Student Judicial Committee



**Anna-Jean Sherman Elvey**  
Detroit, Home Ec., Home Ec. Club, SCF, Home Ec. Lab Asst.



**Allen Lewis Harrah**  
Charleston, W. Va., Accounting, Editor of DENALI '55, '56, '57, Vice President A.S.U.S. '55, '56, Treasurer A.S.U.A. '56, '57, S.U.B. House Committee, Student Council '55, '56, '57, Polar Star, Psi Kappa Alpha, Music, Chair, Finance Comm., Who's Who, Drama



**Gerald Rudolph Hatton**  
Ninilchik, Alaska

**Dorothy Heller**  
College, Biol. Sci., Vert. Zoology



**Ruth Hering**  
Fairbanks, B.A., Senior Class Treasurer, Student Council, Ring Committee

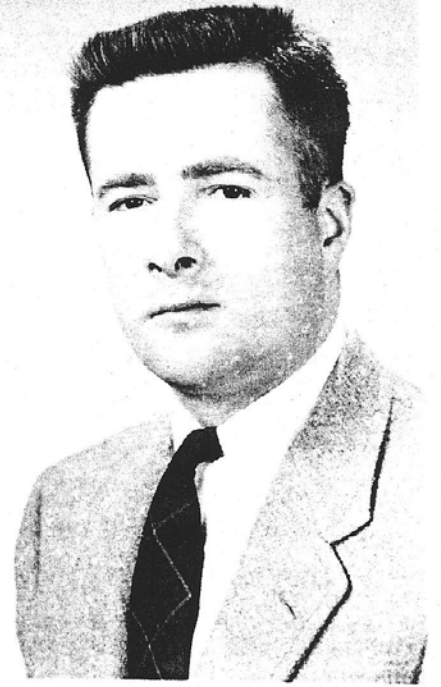
**William E. Holman**  
Royal Oak, Mich., E.E., Polar Star Editor, I.R.C., Model U.N. Delegate, German Club, AIEE Affiliate Branch Chair., Play Reading Group, Film Group, Russian Tea Club.



**Bernard Holtrop**  
Fairbanks, Management, Town Club

**David Townsend Hoopes**

College, W.M., McIntosh Scholarship, A.S. U.A. Vice-President, Judicial Council, Who's Who, Joint Athletic Committee, Health Insurance Committee, Wildlife Club, Rifle Club, Food Service Committee, A.S.U.A. Constitutional Committee.

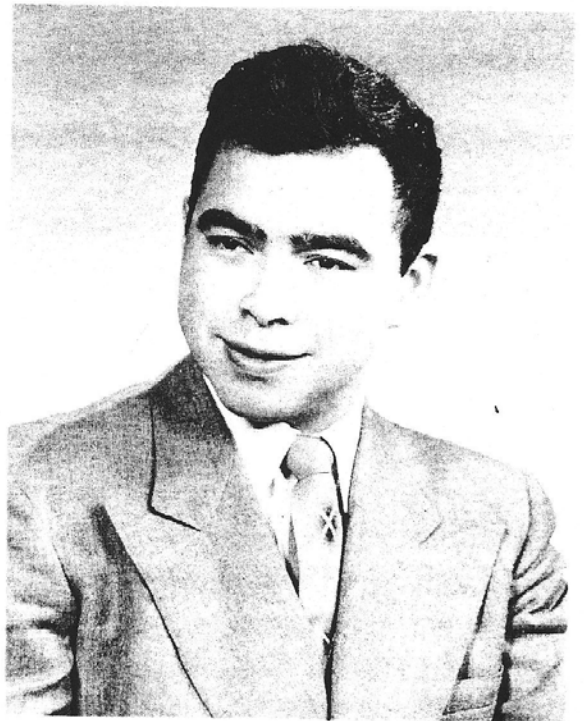


**Clifford Iseberg**

Fairbanks, E.E., Student Council '54, '55, Intramurals.

**Albert Ivy**

McGrath, Alaska, Education, Town Club.



**Elaine M. Jacobson**

College, Gen. Sci., Chorus, I.R.C., Model U.N. Delegate, Chem Club, Student Council, Chem. Asst.



**William C. Jacobson**

Killisnoo, Alaska, B.A., Chorus, Madrigal Singers, Fresh Transportation Committee, Psi Kappa Alpha



**John W. Johnson**

Petersburg, History, Basketball Mgr., Cheerleader, Fresh Orientation Comm., SCF, Fresh Class Sponsor, Russian Club, Lettermans Club, Education Club, Intramurals, Finance Comm., Vice-President A.S.U.A., R.O.T.C. Company Commander, DENALI Staff, Student Council, Dorm Proctor



**Brenna E. Kidney**

Fairbanks, Music Ed.



**Alfred Larsen**

Brooklyn, W.M.



**Ira Blake McKinley**

Palmer, Educ., B.A. Club, Food Service Comm.,  
Student Council



**Virginia Ann Maxwell**

San Bernadino, Calif., Accounting, Judicial  
Council, Activities Comm., Chorus, Polar Star,  
K.U.O.A. Sec. Soph Class, Pep Club Pres., Hess  
Hall Vice-Pres., Student Council



**Wendell P. Miller**

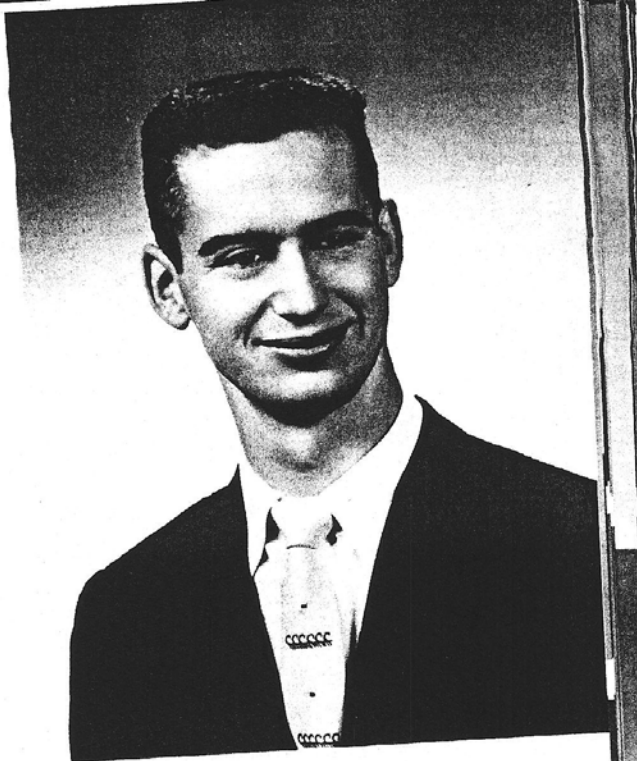
Halsey, Neb., C.E., C.E. Society



**Robert Phelps**

Royal Oak, Mich., C.E., Hockey, Pres. A.S.C.E.

**Ronald Alan Rhodes**  
Palos Verdes Estates, Calif., Engl. & Hist.,  
Feature Ed. Polar Star, Rifle Team.



**Ronald Walter Ruscett**  
College, C.E., A.I.S.C.E.

**Margarita Simpson**  
Oak Park, Illinois, A. & L., Ed. Polar Star,  
Rifle Team, Play Reading Group, Film Group,  
Russian Tea Group, Health Insurance Comm.,  
Judicial Study Group, Pres. Hess Hall, Stu-  
dent Council, Who's Who, Dramatics, Eskimo  
Dance Group.



**Frank H. Stevens Jr.**  
Allakaket, Alaska, Education.



**Joseph Michael Tremarelo**

Fairbanks, Educ., I.A.C., Varsity Basketball,  
Captain of Varsity Basketball Team, Letter-  
mans Club



**Mrs. Edith J. Turner**

St. Peter, Minn., Educ., Chorus, N.E.A.

**James L. Whisenant**

College, Educ., Student Council, Ski Club, Ski  
Team, BSU, I.A.C. Chairman, Vice Pres. Senior  
Class

