

LOWMAN & HANFORD CO.

Office Furniture, Engineering Supplies - - Seattle

ALASKA GAZETTEER AND DIRECTORY (1915-16)

451

Olsen Hagen, miner
 Olsen Otto, trapper
 Ott G, miner
 Peters A, miner
 Pike Wm, miner
 Pride Geo, miner
 Rahmstorf Julius, gen mdse and saloon
 Roberts Wm, miner
 Schmitz A F, mining and dredging
 Steele Floyd, miner
 Stock F, miner
 Strickland F, miner
 Strom John, miner
 Sunborg Walter, miner
 Swansen Chas, miner
 Swansen K, miner
 Swanson C E, miner
 Swanson E E, freighter
 Thompson John, miner
 Townsend E T, miner
 U S Experiment Station, G W Gasser supt in charge
 Welsh John, miner
 Wheeler S W, miner
 White Chas, miner
 Wiehl John, miner

COAST CULVERT & FLUME CO.

PORTLAND (KENTON STATION) OREGON

Corrugated Culverts, Smooth Pipe, Irrigation and Power Flumes, Tanks

Wilson Peter, miner
 Yantiss M, miner
 Yantiss S A, miner
RAPIDS, THE. A roadhouse on the Chitina-Fairbanks trail, 182 miles n of Chitina and 125 s of Fairbanks.
Colombon Henry, roadhouse
RAT ISLAND. One of the western Aleutian group of the same name.
RAT ISLANDS. A westerly group comprising Amchitka, Buldir, Kiska, Rat and Semisopochnoi Island of the Aleutian peninsula.
RED SHIRT. A landing on the Koyukuk River, 45 miles (air line) n of Koyukuk.
REILLY. A mining settlement on Dahl and Shungnak creeks, tributaries of the Kobuk River, 215 miles e of Kotzebue, its shipping point, and 350 ne of Nome. Shungnak is the p o, which see.
REVILLA. A discontinued p o on Revillagigedo Island, 5 miles ne of Ketchikan, the nearest banking point and p o.
REYNOLDS. Pop 200. A mining settlement on Latouche Island, 60 miles sw of Valdez, and 40 e of Seward, its nearest banking point. Has general store, hospital and hotel. Latouche is its p o, which see for names.
RICHARDSON. Pop 300. A town and p o on the Chitina-Fairbanks summer trail, and the Tanana River, 252 miles n of Chitina and 69 se of Fairbanks, the nearest banking point. Has U S military, telegraph service. It is the distributing point for Tenderfoot, Banner, McCarthy, Healy River, Upper Chena, Bush and Redmond Creek mining districts, Mail stage from Washburn weekly in winter. A J Griffin P M.

W. H. HAHLO & CO.
 1510 2nd Av., SEATTLE
 Raw Fur Shipments Solicited
 The Pioneer Fur Traders
 of the Northwest

Great Western Smelting & Refining Co.

Solder, Babbitt, Type Metal of all kinds Seattle, Wash.

H. S. EMERSON CO., Inc.
 BROKERS AND JOBBERS OF
FRUITS AND PRODUCE
 CODES: WESTERN UNION, A, B, C, 5TH EDITION, MODERN ECONOMY, CABLE ADDRESS, EMERSON
 TELEPHONE ELLIOTT 708 P. O. BOX 1846 SEATTLE

452

(1915-16) R. L. POLK & CO.'S

RICHARDSON—Continued

**USE
 WHITE
 HIGH PRESS
 BOOTS
 AND
 PACS
 LOOK
 FOR
 RED
 BAND
 AROUND
 TOP**

Campbell F A, mining
 Chanquist Robt, mining
 Emard M, store and roadhouse Tenderfoot
GRIFFIN A J, U S Commissioner and Postmaster
 Hearn S J, mining
 Isaacson & Co, mining
 Kosola J, mining
 Lawrence, Younggren & Albrecht, mining
 Lenont G J, mining
 McCluskey J W, rancher and freighter
 McMillan & Co, mining
 Melvin & Pohl, mining
 Newton W H, gen mdse and furs
 Pasanen John, mining
 Rem & Benson, mining
 Saasta A & Co, mining
 Samuelson Jacob, grocer and roadhouse
 Shuff & Takola, mining
 Stevens Burt, tmstr Stevens & Clinton
 Stevens & Clinton, tmstrs
 U S Commissioner, A J Griffin
 Westerberg & Co, mining
 Wilkins Fred, roadhouse and gen mdse
RIDGETOP. A station on the Tanana Valley Railroad, in the Tanana

TENTS FLAGS PAULINS
"If it's Canvas SUNDE & d'EVERS Co.
we have it" Colman Dock SEATTLE

**The
 B. F.
 Goodrich
 Rubber
 Co.
 Seattle**

**Factories:
 AKRON, OHIO**

Mining District.
 Brain Walter G, expmn Tanana Valley R R Co
 Dutcher R S, agt Tanana Valley R R Co
 Tanana Valley Railroad Co, R S Dutcher agt
 Watson Chas W, tmstr Tanana Valley R R Co
RIGHT. Also called Wiseman. Nolan is the p o name, which see for names.
ROCK CREEK. A station on the Council City & Solomon River Ry, 4 miles n of Solomon, the nearest p o.
ROCKY POINT. A flag station on the W P & Y Ry, 6 miles n of Skagway, the nearest p o. Name changed to Denver, which see.
RODMAN. A discontinued p o on Peril Strait and Rodman Bay, 150 miles sw of Juneau, the nearest banking point. Weekly steamers to Juneau and Sitka.
 Winn John E, gen mdse
ROMAKERS. A woodyard and landing on the Yukon River, 25 miles n of Circle, the nearest p o.
 Gunderson Chas F, wood chopper
 Romaker Jos, roadhouse
ROOSEVELT. Pop 65. A p o first settled in 1910, and a station on the Alaska Northern Ry, now under U S government control, and on Kenai Lake at the mouth of Ptarmigan Creek, 23½ miles n of Seward, the nearest banking point. Contains a roadhouse, saw mill and grocery store. Seward Light & Power Co telephone service.
 Blue Bell Mine
 Dean Dorothy D, cook

ROLLE-BARNES COMPANY
DRY GOODS SPECIALTIES - NOTIONS
WHOLESALE ONLY SEATTLE

De
 De
 De
 Ed
 Fl
 Gr
 H
 K
 M
 P
 R
 R
 S
 S
 St
 L
 L
 W
 D
 W
 Y
 F
 W
 G
 C
 R
 C
 S
 R
 J
 A
 E
 E
 E
 C
 C
 C
 I
 I
 I
 I
 C
 C
 I

MINING MACHINERY | INGERSOLL - RAND CO.

AIR COMPRESSORS, ROCK
DRILLS

300 Colman Bldg., SEATTLE

NEW YORK

JUNEAU

Stock Carried in Seattle Warehouse

See Page 58

ALASKA GAZETTEER AND DIRECTORY (1915-16)

453

Dean M, cook
Degon M, fox breeder
Dewit Wm, guide
Erickson Aaron, game warden
Flarity Barney, farmer
Grant Lake Mine
Huston Dredging Co
Kenai Gold Mining Co
Moose Pass Mining Co
Primrose Mining & Milling Co
ROBERTS ALBERT W, Postmaster, Freighting, Grocer, Roadhouse and
Saw Mill

Roycroft Frank, roadhouse, mile 29½, Moose Pass
Skeen & Lecknor Mining Co
Spalding C, roadhouse

ROSE INLET. On Dell Island w of Prince of Wales Island, 100 miles
sw of Ketchikan, the banking point. Howkan, 8 miles s, is the p o.

Larsen Emil, supt Wiese Packing Co
Larson Alfred, asst supt Wiese Packing Co
Larson Leonard, store mgr Wiese Pkg Co

Wiese Packing Co, Emil Larsen supt, salmon canners and gen mdse
RUBY. Pop 800. A town and p o on the Yukon River, 120 miles
below Tanana. A stampede was made to this place in May, 1911, since
which time gold has been discovered along Long Creek, a tributary of the
Yukon, about 30 miles back from Ruby City, and also on Fox, Bear and

PLASTER

HARD WALL PLASTER
PLASTER OF PARIS
PLASTER BOARD
PARTITION BLOCKS

PACIFIC COAST GYPSUM CO. 503 Perkins Bldg., TACOMA See Page 13
4501 4529 9th Av. S, SEATTLE Mill First Waterway, Tacoma Mnt. Gypsum Alaska

Fourth of July Creeks, tributaries of Long Creek, and on Big Dome Creek,
which heads from the same dome as Long Creek. The pay is in shallow
ground, bed rock being about 15 or 18 feet down, in thawed ground.
Output of the camp for 1914, \$750,000. Supplies are landed from the
river boats at Ruby and freighted 30 miles overland to the creeks. Has
Catholic and Presbyterian Churches, public school, 2 saw mills, 4 general
stores and a weekly newspaper, The Record-Citizen. Wells, Fargo & Co
Express. Ruby Telephone Co. Weekly stage to Long City, fare \$10.
John W Dunn, P M.

Abelson Saml, clothing
Baggerly S, mgr Ruby Meat Co
Bloom R, hdwe
Bradshaw Ernest Rev (Presbyterian Church)
Carl Geo, saloon
Carter Dr, dentist
Catholic Church (Rev A Desjardins)
Clavau Peter, painter
Cribb Harry, carp
Day A J, agt Wells, Fargo & Co Express
Devane Thos, justice
Desjardins A Rev (Catholic Church)
DUNN JOHN W, Postmaster, Attorney-at-Law and Gen Mdse
Filbin J J, publ'r The Record-Citizen
Gifford Wm, tent, awning and flume hose mnfr
Good Dr, dentist
Haarvie A, gen mdse

St. Paul & Tacoma Lumber Co.
Tacoma, Washington
LUMBER, LATH, SHINGLES, CEDAR SIDING, CREOSOTED LUMBER,
POLES, PILING, PAVING BLOCKS, ETC.

See Page 49

CONTRACTORS
MINING

Machinery

FOR EVERY PURPOSE
REPAIRING AND
PARTS MADE TO
ORDER

Vancouver, B. C. Northwestern Iron Works Seattle, Wn.

FALKENBURG & LAUCKS, Seattle Assaying Ore Testing

Chemical Analysis

Inspection

Customs Milling

454

(1915-16) R. L. POLK & CO.'S

RUBY—Continued

Hill E Coke (Red Cross Drug Co), lawyer
Hodson Frank, logger
Hoffman M T Mrs, ladies furngs
Independent Saw Mill (S Widman)
Johnson & Jepson, gen mdse
Keys Pat, stage line
Light A E
McCahey Patk. logger
McLema Danl, carp
McNight P J, stage line
Mayhood Geo, billiards and cigars
Nimberger Arthur, carp
NORTHERN COMMERCIAL CO, General Merchandise
Presbyterian Church (Rev Ernest Bradshaw)
Record-Citizen The, J J Filbin publ
Red Cross Drug Co (E Coke Hill)
Reynolds E M & Co, cigars, stationery and musical mdse
Ruby Commercial Co, gen mdse
Ruby Meat Co, S Baggerly mgr
Ruby Public School
Ruby Telephone Co
Savoy Danl, logger
Sickinger Martin, gen mdse
Simons Ed (Simons Saw Mill)

F. T. CROWE & CO.

BUILDING MATERIALS
CONTRACTORS SUPPLIES
CEMENT LIME PLASTER
PLASTER BOARD NEOPENSIT BUILDING AND ROOFING PAPERS PAROID ROOFING
TUCH-BRO'S DAMP RESISTING PAINTS INSULATING MATERIALS
SEATTLE TACOMA PORTLAND SPOKANE

Simons Saw Mill (Ed Simons)
Slippern J A, carp
Smith Robt Lynn, jeweler
Spitz Louis, saloon
Thompson Theo, carp
Wells, Fargo & Co Express, A J Day agt
Wettich Shelton

Widman S (Independent Saw Mill)

RUSSIAN MISSION. The principal station of the Greek church in the northern part of Alaska, located on the Yukon River near Holy Cross (Koserefsky) its p o.

Belkhoff Fred, trader

Betts & Johnson (Chris Betts), gen mdse

Bishop & Smith (Fred Bishop), gen mdse

Klemisch & Smith, gen mdse

Krueger Fred, trapper

Tucker Frank, trapper

SAFETY. See Port Safety.

ST. GEORGE ISLAND. See Pribilof Islands.

ST. JAMES. A mission on the Yukon River, 200 miles nw of Fairbanks, the nearest banking point and 17 w of Tanana, the nearest p o.

ST. JOSEPH. A trading post on the Yukon River, 100 miles nw of Kaltag, 600 miles e of Nome, and 150 n of Iditarod, its nearest banking point. Nulato is the nearest p o.

ST. LAWRENCE ISLAND. Pop 300 natives. An island in Bering Sea, 50 miles se of the Siberian Coast, 150 sw of Cape Prince of Wales

"BLACK BEAR" BRAND OVERALLS
and WORKING GARMENTS are the Best for ALASKA TRADE

ALASKA JUNK CO.

FRANK SCHWARTZ, Propr.

LARGEST WHOLESALE DEALERS IN THE NORTHWEST

1120 1st Av S.

SEE PAGE 45

SEATTLE, WASH.

and
is
wh

and
por
siti
fro
anc
tai
ste
by
Ac
Ah
AL

Al
All
An
An
Ay
Ba
Ba

S
Ba
Be
Be
Bl
Bl
Bo
Br
Bu
Bu
Ca
Cr
Da
De
Do
Dr
Du
Ed
Ed
Fa
Fi
Fi
Fi
Fi
Fi
Fi

Willamette Iron & Steel Works

PORTLAND, OREGON

Digging, Hoisting, Mining, Marine & Steamboat Machinery
Boilers, Tanks, Penstocks, Pipe, All kinds of Plate Work
SEATTLE BRANCH OFFICE: 63 COLUMBIA STREET

ALASKA GAZETTEER AND DIRECTORY (1915-16)

455

and 160 miles sw of Nome, the nearest banking point and p o. There is a Presbyterian mission on the n end of the island and a school. Some whale and cod are found.

ST. MICHAEL—A military post, wireless station and army telegraph and cable office and wintering and transfer port for the various transportation and trading companies operating on the Yukon River. It is situated on an island of the same name, 124 miles se of Nome and 85 from the mouth of the Yukon. Was first settled by the Russiaans in 1835 and named Michaelovsky. The Greek and Catholic churches both maintain active missions here with native schools in connection. All Nome steamers touch here on their way south. The winter mail is transported by dog teams from Fairbanks. Chas J Koen, P M.

Achilles Thos, carp Am Y N Co
Ahkman John, lab Am Y N Co

ALASKA STEAMSHIP CO, A Y N Co Agts (See left top, left side and right bottom lines and pp 96 and 97)

Alaska Yukon Trading Co, E H Flynn propr, gen mdse
Allen Floyd L, prin U S Public Sch
Allen Gladys E Mrs, asst prin U S Public Sch
American-Yukon Navigation Co, Chas Malmquist agt
Anderson F A, eng Am Y N Co
Anginan Jos, lab
Ayers Eugene, clk Am Y N Co
Bachelder W H, clk Am Y N Co
Barrett Frank, carp Am Y N Co

ALASKA KNIT GOODS

SWEATERS, JERSEYS, UNDERWEAR

SAXONY KNITTING CO.

SEATTLE

Batchelder L D, clk Am Y N Co
Beedle H E, pilot Am Y N Co
Bemis E P, purser Am Y N Co
Bilger Geo, bargeman Am Y N Co
Blake R W, carp Am Y N Co
Bozeroff Peter, lab
Browner G H, 2d mate Am Y N Co
Buck Roy, mail carrier
Buttall Harry, watchman Am Y N Co
Catholic Mission, Rev J A Shapdelaine S J in charge
Crowley Jas, pilot Am Y N Co
Davis A S, opr U S Radio Sta
De Pue E P, clk Am Y N Co
Doyle Gene, whsmn Am Y N Co
Drohn Capt W H, master Tug Lieut Maxwell Keyes
Duffy Jas, bargeman Am Y N Co
Edwards Albert, gen mdse, Hamilton
Edwards J C, opr U S Radio Sta
Fagan J W, opr U S Radio Sta
Finley Claude, opr U S Radio Sta
Fitzgerald T C, eng Am Y N Co
Flannigan W P, waiter Am Y N Co
Flynn Bros (Robert and Walter M), gen mdse
Flynn Clara A
Flynn E H, propr Alaska Yukon Trading Co
Flynn Irma L



J. H.
IRVING
CO., Inc.

TAILORS
—
IMPORTERS
and **DRAPERS**
of **WOOLENS**

Established 1890

\$35 to \$65

211 Columbia St.
SEATTLE, WASH.

Front & Main Sts.
JUNEAU, ALASKA

RAILWAY **Geo. W. Evans & Co.**

SUPPLIES

3201 L. C. Smith Bldg.

See Page 57

SEATTLE

AKOZ

A Natural Mineral Remedy for
 Stomach Trouble, Chilblains,
 Frost Bites, Catarrh
 All Drug Stores in Oregon and California
NATURA CO., San Francisco

RHEUMATISM

See Page 65

Rosenthal Saml, painter Am Y N Co
 Rothbauer Leon, oiler Am Y N Co
 Scott J, cashr Am Y N Co
 Shapdelaine J A Rev, S J, in charge Catholic Mission
 Shephard T J, gen mdse, Hamilton
 Smith Chas, macht Am Y N Co
 Smith Jas, lab Am Y N Co
 Sommers John, mail carrier
 Soram Alex, eng Am Y N Co
 Stack M J, eng Am Y N Co
 Stapler Wm, carp Am L N Co
 Steamer Alaska, American Yukon Nav Co (W P & Y R), St Michael
 Steamer M. L Washburn, American Yukon Nav Co (W P & Y R), St Michael
 Steamer Sarah, American Yukon Nav Co (W P & Y R), St Michael
 Steamer Schwatka, American Yukon Nav Co (W P & Y R), St Michael
 Steamer Susie, American Yukon Nav Co (W P & Y R), St Michael
 Steamer Yukon, American Yukon Nav Co (W P & Y R), St Michael
 Stevens Alex, eng Am Y N Co
 Stevens Wm, fireman Am Y N Co
 Stivers Edwin R, dep colr in charge U S Customs
 Stoll Hugo, guard U S jail
 Sullivan T W, clk Am Y N Co
 Traeger Chas A (Traeger & Williams)
 Traeger & Williams (C A Traeger, E P Williams), gen mdse



SLEDS

COMMON SENSE PATTERN

Western Ave. and Columbia St.

SEATTLE

Trout John A, eng Am Y N Co
 Tug Lieut Maxwell Keyes, Capt W H Drohn master
 Turner Peter, carp Am Y N Co
 U S Customs House, Chas J Koen dep colr
 U S Marshal's Office and Jail, H J Lee dep marshal and jailer
 U S Public School, Floyd L Allen prin, Mrs Gladys E Allen asst prin
 U S Radio Station, Sergt R A Grantham in charge
 U S Signal Corps, Sergt R A Grantham in charge
 Venso Wm, caulker Am Y N Co
 Webster Fred, carp Am Y N Co
 Wells Fargo & Co Express, Arthur Wilhemsen agt
 White Chas, watchman Am Y N Co
 Wilhemsen Arthur, agt Wells Fargo & Co Express
 Williams Frank P (Traeger & Williams)
 Williams Ivan, clk Am Y N Co
ST. PAUL. A village on Kadiak Island, originally the Russian capital of Alaska, now known as Kodiak, which see.
ST. PAUL ISLAND. See Pribilof Islands.
SALCHA. A telegraph station located at Salchaket.
 Bloxham Carl L, opr in charge U S Military Telegraph and Cable office
SALCHAKET. Pop 60. A p o and trading post first settled in 1904, at the mouth of the Salcha River, 40 miles s of Fairbanks, the nearest banking point, on the Fairbanks-Chitina trail. St Luke's Indian Mission is located here.
 Barrington John, miner
 Berdrend Chas (Munson's Roadhouse)

PACIFIC ALASKA NAVIGATION CO. "THE ADMIRAL LINE"
 PUGET SOUND-ALASKA ROUTE—S. S. ADMIRAL WATSON AND ADMIRAL EVANS
 FIRST CLASS PASSENGER AND FREIGHT SERVICE
 PIER 1, SEATTLE

SMITH, DANIELS & KELLER

WHOLESALE

Men's, Women's and Children's
 Underwear, Hosiery, Etc., Staple
 and Fancy Notions

SEATTLE

\$100 and \$110 Tours to Wonderful Alaska

WRITE

ALASKA S. S. CO. = = = SEATTLE

458

(1915-16) R. L. POLK & CO.'S

SALCHAKET—Continued

Bowdon Gus, miner
 Brandstetter Carl, miner
 Fredericks Beula, tchr St Luke's Indian Mission
 Hensley Roy, miner
 Hiller Geo (Munson's Roadhouse)
 Munson's Roadhouse (Chas Berdrend, Geo Hiller)
 Munson Thora Mrs, postmaster and notary public
 Owens Ed, miner
 Pierceson Oscar, miner
 Quелlette John, trapper
 St Lukes' Indian Mission, Mrs Maud Thompson deaconess, Beula Fredericks tchr
 Shaw Harry, waiter Munson's Roadhouse
 Thompson Maud Mrs, deaconess St Lukes' Indian Mission
 Tracy Jas, barnman Northern Commercial Co
 Turpin Guy, miner

SANAK. A p o on an island of the same name off the Alaska Peninsula, 600 miles sw of Seward, the nearest banking point, 150 ne of Unalaska and 100 sw of Unga. Mail, semi-monthly. S A G Holmberg, P M. Alaska Codfish Co, codfish packers

SAND POINT. Pop 30. A p o and trading post, also called Humboldt Harbor, first settled 1878, on Popof Island in the Alaska Peninsula, 1,200 miles w of Juneau and 350 miles sw of Seward, the nearest banking

FRANKLIN TOOL WORKS **Manufacturers**
 Mill, Mine, Cannery and
 Fishery Supplies
 See Page 56
 SEATTLE, WASH.

point. It is the center of the principal codfish banks, and quartz and placer mining is also carried on in the vicinity. Cattle and blue fox raising are also profitable industries. Mail steamers from Seward and intermediate coast points once a month. Wells, Fargo & Co Express. A Grosvold, P M.

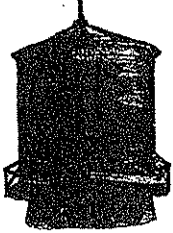
ALASKA STEAMSHIP CO (See left top, left side and right bottom lines and pp 96 and 97)

Burns Garrett, roadhouse Baloa Bay
 Christensen Neils, cattle breeder, furs, U S Weather Observer, Coal Harbor

Code E L Miss, midwife and nurse
 Dupee Saml, passenger boat
 Fitzgibbons Wm, cattle breeder
 Granrose Bros, ranchers and fishermen

GROSVOLD ANDREW, Postmaster, General Merchandise and Saloon, Blue Fox Breeder and Agt Wells, Fargo & Co Express

Grosvold C, blksmth
 Grouholdt Peter, blue fox breeder
 Hanson Andw, cattle breeder
 Harris Jas, hunter and trapper
 Helgesen Wm, mining
 Herman Louis, mining
 Larsen Edwin, blue fox breeder
 Leonard Henry, rancher and fisherman
 Martin Eli, blue fox breeder
 Olsen Geo, carp



Tanks

For Water, Oil
 Mining
 Tank Towers
 Cyanide Plants

PIPE

For Water Works
 Irrigation
 Mining
 Power

National Tank & Pipe Company

Formerly P. T. & P. Co.

OFFICE

275 OAK STREET
 Portland, Oregon

FACTORY

KENTON STATION



SEATTLE MACHINE WORKS INC.

Builders of Marine, Mining, Dredging, Contractors' and Mill Machinery
 General Repairs a Specialty

Lander Street and East Waterway

SEATTLE, WASHINGTON

Niel
 Oph
 Pete
 Pete
 Pete
 Teb
 Vine
 Wel
 Wils

Rus:
 fam
 God

\$0 r
 Nort

nam

Ket

neal
 w o
 Gok
 tors

L

Kac
 sw
 Coo
 cipe
 in t
 dur
 P. 1
 And

Bed
 Blo
 Bog
 Cai

CH
 Chr
 Dot
 Doy
 Filr
 Gra
 Gra
 Her
 Her
 Hon
 Job
 Lee

Al

Si

Allen & Lewis, Portland, Ore.

Wholesale Grocers

CORRESPONDENCE INVITED

ALASKA GAZETTEER AND DIRECTORY (1915-16)

459

Nielsen Gus, hunter and trapper, Coal Harbor
 Opheim Chris, cattle breeder
 Peterson Chas, baths
 Peterson Geo, blue fox breeder
 Peterson Nicolai, cattle breeder
 Tebbey H S, Coal Harbor
 Vincent Manuel, hunter and trapper, Coal Harbor
 Wells, Fargo & Co Express, Andw Grosvold agt
 Wilson Emil, blue fox breeder

SANITARIUM. A p o on Baranoff Island, 15 miles s of Sitka. The Russians maintained a hospital here in 1841; now the location of the famous Sitka Hot Springs.

Goddard Fred L, sanitarium

SANTA ANNA. A fishing settlement near Wrangell, its p o, and 80 miles nw of Ketchikan, the nearest banking point.
 Northwestern Fisheries Co, salmon cannery

SATURDAY CREEK. A mining settlement on a creek of the same name near Nome, the p o, banking and shipping point.

SAXMAN. A discontinued p o 95 miles se of Wrangell and 15 sw of Ketchikan, now the nearest p o.

SEALEVEL. A mining camp, settled in 1897, on Revillagigedo Island, near the head of Thorne Arm. It is 260 miles se of Juneau and 24 miles w of Ketchikan, its nearest p o, banking place and steamboat landing. Gokatchen Creek furnishes power to operate stamp mills and concentrators. The gold found in the vicinity is mostly of free milling variety.

L. HURWITZ & CO. Seattle, U.S.A.

STORE, OFFICE AND BAR FIXTURES

SAFES AND CASH REGISTERS

SELDOVIA. Pop 150. A p o and village first settled in 1880 on Kachekmak Bay, an arm of Cook Inlet, 740 miles sw of Sitka and 140 sw of Seward, the nearest banking point. Mail steamers plying between Cook Inlet, Juneau and Seattle stop here three times monthly. The principal industry is fishing, although coal of high grade is now being mined in the vicinity. Thirteen thousand tons of this coal consumed at Seldovia during past year. Mines not fully developed yet. Mrs Annie Christiansen P. M. Homestead filing now allowed on unreserved coal lands.
 Anderson S Juanita, sch tchr, sec Seldovia Promotion and Commercial Club

Bediah M, farmer, Anchor Point

Bloch Adam (Estate), Mrs Annie Christiansen mgr, gen mdse

Bogart Eugene R

Caille M, cook, farmer, Ninilchik

CHRISTIENSEN ANNIE MRS, Postmaster, Mgr Adam Bloch (Estate)

Christiansen Julius, hunter and registered guide

Dougherty Jas, miner

Doyle Patk, farmer

Filmer A, farmer

Granrose John, fisherman, Anchor Point

Granrose L, farmer, Anchor Point

Herberth J A Mrs, hotel

Herberth J A & Co, gen mdse

Honolulu Jack, fisherman, Anchor Point

Johansen Anton, mgr Seldovia Mercantile Co

Lee John H, launchman and trapper

Alaskans

Get Their

Dental

Work Done

by the "Old
 Sourdough"

The

Right

Dr.

Brown

DR. J. BROWN

627 First Ave.

SEATTLE

American Dredge Building & Construction Co.

503-4 Pioneer Bldg., Seattle, Wash., U. S. A.

Small Dredges for Alaska Trade a Specialty

THE BREYMAN LEATHER COMPANY

LEATHER, FINDINGS, SHOE STORE SUPPLIES, SHOE
MACHINERY AND SADDLERY GOODS

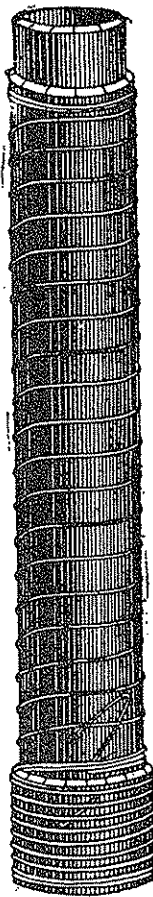
329-331 EVERETT STREET

PORTLAND, OREGON

460

(1915-16) R. L. POLK & CO.'S

MANUFACTURERS
**WOODEN
WATER
PIPE**



Washington
Pipe &
Foundry Co.
TACOMA, WASH.

SELDOVIA—Continued

Leman Jos, fisherman, Ninilchik
Leonhardt H A, fisherman and trapper, Anchor Point
Lindstrom H, fisherman, Anchor Point
McKeon W J, owner Seldovia & Iliamna Boat Line, fox breeder, gu
Moyses Benj, pres Seldovia Salmon Co
Nelson Fred, trapper and guide
Newman Chas, fisherman, Ninilchik
NORDYKE I D CAPT, Registered Pilot, Launchman, Fisherman, A
Sec Seldovia Promotion and Commercial Club
Olsen Anton, fisherman, Ninilchik
PACIFIC ALASKA NAVIGATION CO (THE ADMIRAL LINE), Seat
Wn (See right side lines and p 95)
Patterson C S, boatman and fisherman, Anchor Point
Randolph E F, sec-mgr Seldovia Salmon Co
Richie Saml, fox breeder
Romanoff Alex, fisherman, Ninilchik
Russian Church
SELDOVIA MERCANTILE CO, Anton Johansen Mgr, Gen Mdse
SELDOVIA PROMOTION AND COMMERCIAL CLUB, S Juanita And
son Sec, Capt I D Nordyke Asst Sec
Seldovia Salmon Co (Seattle), Benj Moyes pres, E F Randolph sec-
Seldovia & Iliamna Boat Line, W J McKeon owner
Shueller N P, fox breeder, Anchor Point
Slater John, coal mine

RUSSELL ENGINES IN STOCK FOR IMMEDIATE DELIV
BOILERS THE A. H. AVERIL
SAW MILLS MACHINERY CO.
PORTLAND SPOKAC

Tansy John, launchman
Ulstead Tallak, fox breeder
Waal E E, fisherman, Anchor Point
SEMIAMMOO. A settlement on Unalaska Island. Nearest p o
Unalaska.
SEMICH ISLAND. One of the Near Islands comprising the m
westerly of the Aleutian group in southwestern Alaska.
SEMISOPOCHNOI ISLAND. One of the Rat Islands of the west
Aleutian group.
SENATI CAMP. A landing on the Yukon River, 20 miles w of K
Yukon, the nearest p o, which see for names.
SEVENTY MILE. A mining district on a river of the same na
which empties into the Yukon at Star, the boat landing. Eagle, 15 m
s is the p o and supply point.
Froelich Arthur (Froelich & Kohmer), Crooked Creek
Froelich & Kohmer (Arthur Froelich, Herman Kohmer), mining Croo
Creek
Johnson Axel, mining, Seventy Mile
Kohmer Herman (Froelich & Kohmer), Crooked Creek
Matlock Geo, mining, Fox Creek
Robertson A E, mining, Flume Creek
Ross Harry, mining, Alder Creek
Rundell Geo, mining, Crooked Creek
Russell Wm, mining, Curtis Bar
Turnbull Alex (Williams & Turnbull)
Williams John (Williams & Turnbull)

GEORGE BOOLE, Pres. GEORGE W. BOOLE, V.-P.-Sec'y FRANK J. SPECKERT, T

Send Us Your Orders, It's Safe to Trade Here
WESTERN HARDWARE & METAL CO., SEATTLE, WASH

Read By More

Engineers, Contractors, Architects, Builders, Manufacturers, Dealers, City, County and State Officials, Owners and Managers of Industrial Plants, than any other similar publication in the Pacific Northwest—

PACIFIC BUILDER & ENGINEER

is the pioneer engineering, contracting, and industrial weekly of the Pacific Northwest and the recognized authority in its field. It contains each year over 1,500 pages of editorial and descriptive articles, amply illustrated with drawings and photographs, in addition to its contracting news.

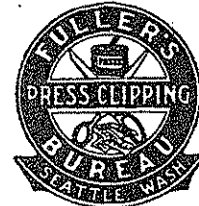
You can be a subscriber for \$5.00 a year—less than 10 cents a week. Send in your order today and we will bill you later.

Fuller Publishing Co.

Seattle

Tacoma, Spokane, Portland, San Francisco

What Do You Want To Know?



You are probably at times handicapped for the want of some general or technical information regarding your business or profession, which would be of untold benefit to you.

We can supply this information promptly and authentically at small cost.

In our press clipping department we read and clip newspapers and periodicals and furnish our clients with all the news and happenings coming up regarding their particular business or profession.

Prices and samples gladly on request.

Fuller Publishing Co.

Seattle

Tacoma, Spokane, Portland, San Francisco

You Need--

Fuller's Daily Report

It is indispensable to the man who is interested in obtaining the earliest authentic news regarding Commerce, Insurance, Finance, Building, Construction and Engineering in the Pacific Northwest. It treats these subjects each business day in such a manner that the busy professional or business man can keep well informed with the least expenditure of time

Subscription Price:- \$1.25 a month

Send for Sample Service

FULLER PUBLISHING COMPANY

SEATTLE

Tacoma, Spokane, Portland, San Francisco

The Man Who Has Something To Sell

something that he believes will save his customers money --wants the trade he caters to educated. He believes that, being educated, the trade will see things as he sees them, and be willing to give his machine, his method or his services a trial.

It is manifestly impossible for him to present his argument to the entire trade.

So he employs the "silent salesman"-the printed booklet, folder or catalog.

It is not what your printed matter costs, but whether it will bring in the dollars that counts.

A salesman dressed in overalls will not sell the goods that a well dressed salesman will.

Let us give your catalog that tailor-made appearance that will bring in the dollars.

Fuller Publishing Co.

SEATTLE

Tacoma, Spokane, Portland, San Francisco

Bogardus Testing Laboratories

ASSAYERS AND CHEMISTS

SEATTLE

INSPECTING AND TESTING ENGINEERS

Established 1890

ALASKA GAZETTEER AND DIRECTORY (1915-16)

461

Williams & Turnbull (John Williams, Alex Turnbull), mining, Barney Creek

SEVOOKOK. Native name of Gambell, which see.

SEWARD

SEWARD. Population about 1,000. An incorporated city, situated at the head of Resurrection Bay, one of the most perfect and deep all-year harbors on the Pacific Coast, with facilities for handling the largest of vessels. It is 735 miles west of Juneau, the capital, and 1,604 miles northwest of Seattle via inside steamer route. Seward is the Pacific terminus of the Alaska Northern Railway, which has recently been purchased by the U S Government and is being extended under the Alaskan Engineering Commission to the Matanuska coal fields, about 150 miles north, which is to be opened under government supervision. The headquarters of the Alaska Engineering Commission is at Seward. The terminal facilities at Seward are suitable for an unlimited population, Resurrection Bay extending back from the head of Resurrection Bay, several miles wide and twelve miles long. Six steamers ply regularly between Seward and Seattle and a steamer leaves the 15th of each month for Unalaska and intermediate points. It is the terminal of the Iditarod mail service from November to May.

Seward has daily and weekly newspapers, electric light plant, telephone service, gravity water system with good fire pressure, two banks, school, two churches and is the seat of a U S Commissioner's court.

See Page 49

St. Paul & Tacoma Lumber Co.

TACOMA, WASHINGTON

Seward is connected with the outside world by a government cable. Press, Wells, Fargo & Co. P J Hickey, jr, postmaster.

City Officials

Mayor—Chas A Myers
 Clerk and Magistrate—Walter T Lucas
 Attorney—Wm D Coppernoll
 Assessor and Health Officer—Jos H Romig
 Engineer—D S Whitfield
 Chief of Police—Robt Quest
 Chief of Fire Department—Melvin Horner
 Councilmen—Gustave W Borgan, Eli E Chamberlin, John E Chovin, Chas Crawford, Chas T Daggett, Chas A Myers and Frank E Youngs

DIRECT ROUTE TO THE IDITAROD

Alaska Northern Railway

Station.	Miles.	Station.	Miles.
SEWARD	—	Sunrise Station	34.0
Barney Creek	6.5	Hunters	40.5
Summit	12.0	Grand View	45.0
Sal Lake	20.0	Tunnel Siding	52.0
Sevelt	23.5	Spencer Glacier	53.0
Barney Creek	25.0	Twenty Mile River	65.0
Sal Lake	26.0	KERN CREEK	72.0
Sevelt Pass	29.5		

Continuing by trail to Iditarod. These distances are not absolute, all trails have been found, upon actual measurements, to be much shorter.



THE BORDER LINE

Southeastern Alaska Safety, Comfort, Lowest Rates

S. S. ALKI

From Pier 4, For

Ketchikan, Wrangell, Petersburg, Thane, Douglas, Treadwell, Juneau, Sitka. Passengers and Freight

S. S. DESPATCH

From Pier 4, For Ketchikan and West Coast Prince of Wales Island Points to Port Armstrong, Hoonah, Thane, Douglas, Treadwell, Juneau. Passengers and Freight.

S. S. NORTHLAND

For Ketchikan and All Southeastern Alaska Points. Freight and Explosives.

The Border Line Transportation Co.

Ticket Office 103 Yesler Way Wharf Ticket Office Pier 4 SEATTLE, WASH.

UNION CONSTRUCTION CO.

BUILDERS OF

LAGER DREDGES, UNION DRILLS, NEILL JIGS

MISSION ST., SAN FRANCISCO.

CATALOGUES

John A. Roebling's Sons Co. H

OF CALIFORNIA

Iron, Copper and Steel Wire of Every Description. Expand Metal Lath. Wire Nails.
900 FIRST AV. SOUTH, SEATTLE, WASH. TEL. MAIN 4992

462

(1915-16) R. L. POLK & CO.'S

"Isaacson's" NON-BREAKABLE Alaska

THAWING POINTS

Seattle

Write for
Prices, Etc.

THE ONLY POINT ON THE MARKET

That Will Not Break

Hose Securely Fastened With Clamp and

Spring Washers

SEWARD—Continued

Glacier	76	Dalzell	288
Bird Creek	88	Rohn River*	303
Sibley (tent)	94	French Joe's	340
Ship Creek	101	Nicholi's	363
Eagle	166	Berry's	389
Old Knik	132	Tocotna	415
Knik	152	Nickson	433
Little Susitna	167	Whalen's	446
Susitna	187	Stafford's	472
(Ocer cutoff) Trapper's Cabin	229	Moore	489
Hays River	245	Ruby Creek	516
Happy River	262	Otter	533
Pass Creek*	284	Iditarod	543
Summit*	294		

A star after the name indicates no roadhouse.

Numerous creeks and towns may be reached from Tocotna and Iditarod. After leaving Tocotna there are many roadhouses not mentioned in the above, and between there and Susitna new ones are locating.

Alphabetical List of Names

Adams Geo, clk
Adams Inez, bkpr Alaska Land & Development Co
Adkins John F, barber
Alaska Dental Assn, Dr Chas T Daggett pres, Dr E Frank German (Valdez) v-pres, Dr Henry Cockerille (Valdez) sec, Dr Herman Behla (Iditarod) trustee

We are the Largest Manufacturers and keep the Largest Supply of Trunks, Suit Cases, Traveling Bags in the Northwest. Can fill your order promptly next day after order arrives.

Multnomah Trunk & Bag Co.

82 E. WATER STREET PORTLAND, OREGON

ALASKA LAND & DEVELOPMENT CO INC, G F Rust (Seattle) Pres
G Benj Poindexter Mgr (See front cover and p 78)
Alaska Mines Engineering Co Inc
Alaska Northern Ry (Purchased by the U S Government), W E Stavert (Toronto) pres, J C Williams (Seattle) v-pres, Jas A Haight (Seattle) sec, Francis G Jennett (Toronto) treas, Herbert Tozier mgr, Walter J Boland (Toronto) counsel, Geo H Patrick (Washington, D C) atty, S O Morford atty at Seward
Alaska Post (Daily and Weekly), Post Publishing Co publr, Roy W Schenck managing editor
Alaska Realty Co, H W Bird mgr
ALASKA STEAMSHIP CO, A H McDonald Agt (See left top, left side and right bottom lines and pp 96 and 97)
Alaska Transfer (Harry V Hoben, Alvin F Davis) exp and fuel
Alaska Trust & Development Co, D M Stewart pres, C R Morford sec
Alaskan Engineering Commission (Headquarters), Wm C Edes chairman, Thos Riggs jr (Fairbanks), Lieut Fredk Mears (Anchorage)
Alexander Chas J, phtgr
ALL-ALASKA REVIEW THE (Monthly), J J McGrath Editor, B M Stone Mgr
Allenbaugh E B, lab Alaska Northern Ry
Allenbaugh Jas E, driver Carstens Pkg Co
Almor Carl, lawyer
Amsweller Chas, fisherman
Anderson Arvid G, acct Brown & Hawkins

LINK-BELT AND DODGE PRODUCTS CO.

SEATTLE, WASH.—PORTLAND, ORE.

ELEVATING, CONVEYING, POWER TRANSMISSION

CATALOGS ON REQUEST

Ande
Ande
Ande
Ande
Ande
Ande
Ande
Ande
Arcti
Ashk
Ayer
Ayre
Babi
Bage
Bald
Bald
BAL
BAL
BAL
Ball
Banl
TY
Br
623-
Ban
Bar
Bar
Bar
Bar
Bat
Bat
Bau
Bau
Bea
Ben
Ben
Ben
Ber
Big
Bir
Bla
Blu
BLU
Boe
Bol
Bol
Boi
Boi
Bre

HARDWOOD LUMBER

EHRlich-HARRISON COMPANY

ils. SEATTLE

WASHINGTON

ALASKA GAZETTEER AND DIRECTORY (1915-16)

463

- Anderson Ed E (Anderson & Murphy)
 .298 Anderson Jas G, phys, Daggett blk
 .303 Anderson John, sec Canyon Creek Mining Co
 .340 Anderson Nels H, carp Brosius & Noon
 .363 Anderson N R, lab
 .389 Anderson Peter N, elec Seward Light & Power Co
 .415 Anderson Sidney, v-pres-cashr Bank of Seward
 .433 Anderson & Murphy (Ed E Anderson, Hugh J Murphy), saloon
 .446 Arctic Brotherhood Camp Seward No 21, R Lane A C, M Jos Conroy A R
 .472 Ashland Robt (Seward Soda Works)
 .489 Ayers A A
 .516 Ayres Elmer E, cement blocks
 .533 Babis Wm J, prospector
 .543 Bagge Philip, miner
 Balderston H F, asst cashr Bank of Seward
 Baldwin Elsie, cashr Ernest Levin
 Baldwin Wm A C, mgr The Fairbanks Rooms
 Idit- BALLAINE BROS CO, John E Ballaine (Seattle) Pres, Frank L Ballaine
 oned Vice-Pres, Owners Seward Townsite, Bank of Seward Bldg
 BALLAINE FRANK L, Pres Canyon Creek Mining Co, Seward Commer-
 cial Club and Seward Water & Power Co, Vice-Pres Ballaine Bros
 Co, Administrator Wieble Hydraulic Mining Co, Bank of Seward Bldg
 Ballard Leon F, mining
 dez) Banbury Martin S, condr Alaska Northern Ry
 dita-
- "Yellow Strand" and All Other Grades of Wire Rope**
CAMP, MILL AND MINE SUPPLIES
Broderick & Bascom Loggers Supply Co.
 623-5 WESTERN AVE. SEATTLE, WASH.
- O.
 GON Bank of Seward, Chas E Brown pres, Sidney Anderson v-pres-cashr, H
 F Balderston asst cashr
 pres. Barndollar Burton H, examiner of accts Alaskan Eng Comn
 Barnes J E, eng
 Barnes Thos P, sec-treas Sunrise Dredging Co
 advert Barrett R R, brtnr
 (title) Bates Lewis, miner
 alter Bates Lewis C, clk W W Butts
 atty, Baugh Clarence, logger
 Baughman John A, phys and U S game warden
 y W Bean F A, clk G W Borgan
 Bennet Hilliard G, clk Alaskan Eng Comn
 Benson Chas (Benson & Co)
 side Benson & Co (Chas Benson, Chas A Tecklenburg), saloon
 Berns Chas, lab
 Bigford Frank R, clk G W Borgan
 sec Bird Herbert W, mgr Alaska Realty Co
 man, Blake Harry M, lineman
 Blue Bell Mining Co, Geo G Hubbard pres-mgr
 BLUE WAYNE, Colr Seward Water & Power Co, Sec Seward Commercial
 Club, Ticket Agt Pacific Alaska Navigation Co
 stone Boe Geo G (Seward Iron Works)
 Bolduc Jos, barber F C Miller
 Bolmer Edwin J, porter F C Miller
 Borgan Gustave W, grocer, city councilman
 Boyle Arthur R, jeweler
 Bradshaw Jos, circulation dept The Seward Gateway

PIONEER

BINDERY

AND

PRINTING CO.

STATIONERS

ENGRAVERS

BLANK BOOK

MAKERS

LOOSE LEAF

LEDGERS

TACOMA

Inside Passage Excursions

ALL ALASKA STEAMSHIP COMPANY'S VESSELS

On Southwestern and Southeastern Routes Operate via Inside Passage



WILSON'S BOAT AND SHIPYARD

JOHN WILSON, Proprietor

Pleasure or Commercial Boat Building and Repairing—Dory Building for the Fishing Trade a Specialty

SEATTLE,

WASH

464

(1915-16) R. L. POLK & CO.'S

T. F. CLARK CO. Inc.

M. SILVER
Manager

Manufacturers

of All
Kinds of
SHEET
METAL
WORK

Made For
ALASKA
SINCE

1897

YUKON STOVES

HYDRAULIC NOZZLES TANKS

GENERAL
MARINE AND
SHEET METAL
WORK DONE

602-615

Railroad Ave.
SEATTLE,
WASH.

SEWARD—Continued

Bradshaw Thos, tmstr Alaska Transfer
Britton G C, lawyer
Brooks E R, phys
Brosius Carl (Brosius & Noon)
Brosius & Noon (Carl Brosius, John Noon), lumber dlrs
Brown Almon P, salsn S L Colwell
Brown Anna Mrs, laundry
Brown Chas E (Brown & Hawkins), pres Bank of Seward
Brown Felix, mining
Brown Frank, cook Cooper's Cafe
Brown Harry, brtnr F W Powers
Brown Neal, prnter Gateway Publishing Co
Brown W H, cook
Brown & Hawkins (Chas E Brown, Thos W Hawkins), gen mdse
Bronell Don C
Brownell Don C jr
Bryant Alfred H, supt Valdez Creek Mining Co
Bunce Fred, launchman, miner
Burley Delia M Mrs (Palace of Sweets)
Burley Frank W (Palace of Sweets)
Burnham Helen
Burr C E, rancher
Button Matt R, restaurant, 2d hd gds
Butts Wm W, confr and notions

ASK YOUR DEALER FOR

Washington Shoe Mnfg. Co.'s

SHOES OF QUALITY

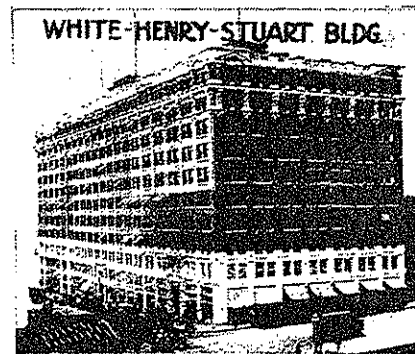
Cahalan Rose
Cameron-Johnson Gold Mining Co
Campbell Benj L, asst eng Alaskan Eng Comm
Campbell J Jos (Ennis & Campbell)
Canyon Creek Mining Co, Frank L Ballaine pres, John Anderson sec
Cappers Saml, roadhouse mile 72 (Kern Creek)
Carington G C, clk Brown & Hawkins
Carlson Aldoren
Carlson Andw J, laundry
Carlson Evelin
Carlson Swan, lab
Carrol Geo (Geo Carrol & Co)
Carrol Geo & Co (Geo Carrol, Sidney Woolf, A Wineberg), clothing and shoes
Carstens Packing Co, C A Myers mgr, meats
Case Jas, promotor
Casey Albert J, clk R M S
Casino Theatre (N J Koontz), motion pictures Daggett blk
Cavanau Wm, miner
Cawthon Gatie I, clk Mrs Jessie Ellsworth
Chamberlin Eli E, miner, city councilman
Cherry M O, lab Alaska Northern Ry
Chovin John E (Chovin Supply Co), city councilman
Chovin Supply Co (John E Chovin), electric supplies
Christensen Chas, live stock dlr
Christmas Christ, plumber

MOULDINGS AND MILL WORK

STETSON & POST LUMBER CO., SEATTLE

Waldron Company

SEATTLE, WASH.



Mail Order Rug House

CARRIES BIG AND ODD SIZES
Axminsters, Brussels and Wiltons
Large Assortment to Choose From

WHOLESALE AND RETAIL

FREIGHT PREPAID

TERMS GIVEN

Write Your Requirements

LINOLEUM, CURTAINS, PORTIERES

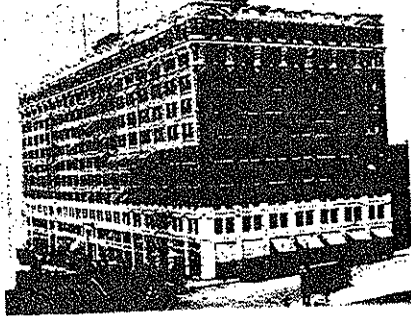
Samples and Color Cuts Mailed

WALDRON COMPANY

1322 FOURTH AVENUE, HENRY BUILDING

Going Through to 1325-27-29 Fifth Ave.

WHITE-HENRY-STUART BLDG.



Waldron Company

SEATTLE, WASH.

FURNITURE DEALERS

WHOLESALE AND RETAIL

Carry a full assortment of medium priced goods. Our special full-sized Mattress, \$2.95, has cotton top, bottom and sides, and art tick. Fine line of Oak Davenports, from \$28 up. We carry the full line of Doernbecher Mfg. Co.'s Furniture

Write for Prices on Anything You May Require

WALDRON COMPANY

1322 FOURTH, HENRY BUILDING

Going Through to 1325-27-29 Fifth Ave.

(Formerly the Warerooms of Howard D. Thomas
Company)

SMITH & BLOXOM

Wholesale FRUITS and VEGETABLES

Madison, nw Cor. Western Ave.

SEATTLE, WASH.

ALASKA GAZETTEER AND DIRECTORY (1915-16)

465

City Dye Works (Solomon Stalensky)
 Clemens Saml, lab
 Clinton Jas A, miner
COLEMAN HOTEL (Geo Sexton) (See adv)
COLWELL S L, Clothing, Men's Furnishings, Rubber Goods, Shoes, Etc
CONGDON SIDNEY B, Asst Cashier The Harriman National Bank of
 Alaska, at Seward
 Conomides Thos, barber F C Miller
 Conroy M Jos, lawyer, U S commissioner, A R, Camp Seward No 21, A B
 Constable Jas, mgr Frye-Bruhn Co
 Cook C F Rev (Methodist Episcopal Church)
 Coombs Jos A, civ eng
 Cooper's Cafe (Mrs Rhoda J and Chas C Cooper)
 Cooper Chas C (Cooper's Cafe)
 Cooper Rhoda J (wid Jacob) (Cooper's Cafe)
 Coppernoll Wm D, lawyer, city attorney Daggett blk
 Cotter Frank J (The Miner's Store)
 Cottle Vern H, butcher
 Crabtree I J, clk Overland Hotel
 Cramer Leslie, special disbursing agt Alaskan Eng Comn
 Crawford Chas, blksmith, city councilman
 Crawford Edwd A, tmstr Alaska Transfer
 Crocker Montgomery D, paints and wall paper
 Crocker Ulysses G, painter M D Crocker

GOLD SHIELD COFFEE

"ALWAYS GOOD"—SOLD IN SEALED CANS ONLY

Roasted and Packed by **SCHWABACHER BROS & CO., Inc.** Seattle

CROOKALL DOCTOR ARTHUR, Rectal Diseases a Specialty, 412 Joshua
 Green Bldg, Seattle, Wash
 Crow Mining Co (Daggett & Whitney)
 Cummings John M, boarding
 Cunningham H, lab

90%

*OF OUR ADVERTISERS RENEW THEIR
 CONTRACTS WITH LITTLE IF ANY
 SOLICITATION—ABOUT AS MUCH AS
 SAYS THEY'RE SATISFIED DOESN'T IT?*

R. L. Polk & Co., Inc.
SEATTLE

Mining, Marine and Canning Machinery Manufacturers
 Repair Work of All Kinds. Cylinder Boring and Packing. Ship, Boat and Launch Repairs
 Mast and Spar Makers

Wright & Smith Machine Works, Seattle, Wn.

Pacific Alaska Navigation Co. "The Admiral Line"
PUGET SOUND-ALASKA ROUTE—S. S. ADMIRAL WATSON AND ADMIRAL EVANS
FIRST CLASS PASSENGER AND FREIGHT SERVICE
PIER 1, SEATTLE

Let us demonstrate with an order from you the Superior Service of a Modern Jobbing House

Western Dry Goods Co., Wholesale

SEATTLE, WASH.

466

(1915-16) R. L. POLK & CO.'S



Dr.
Edwin J.
BROWN

D. D. S.

Seattle's Leading

Dentist

713 First Avenue,
Union Block.

Established 25
Years; All Work
Guaranteed 15
Years.

BEWARE of imi-
tators.

My Name is not
"J" but

EDWIN J.
BROWN

SEWARD—Continued
DAGGETT BLOCK, 4th Av and Washington St (See adv)

DAGGETT BLOCK DIRECTORY

Modern Office Building
Fourth Ave. and Washington St.
SEWARD, ALASKA

CHARLES DAGGETT
DENTIST
J. G. ANDERSON
PHYSICIAN AND SURGEON
W. P. HENRY
REAL ESTATE AND INSURANCE
W. D. COPPERNOLL
ATTORNEY AT LAW
SEWARD ABSTRACT & TITLE CO.
GRACE C. HEWITT
PUBLIC STENOGRAPHER
N. J. KOONTZ, MANAGER
CASINO THEATRE
(Ground Floor)
SEWARD TAILORS
CLEANING, PRESSING AND
REPAIRING
F. WILSON
SIGN WRITER
(Basement)
FRANK L. TORREY
PAINTER AND DECORATOR
(Basement)

DAGGETT CHARLES DR, Dentist, Pres Alaska Dental Assn, Chair-
man (for Alaska) National Mouth Hygiene Assn, City Councilman,
Daggett Block

Daggett Cora, dentist Daggett blk

Daggett & Whitney (Crow Mining Co)

COMPLETE SAW MILLS

PLANS—SPECIFICATIONS—ESTIMATES

PORTLAND IRON WORKS, PORTLAND, OREGON

Daigler Harold E, draftsman Alaska Land & Development Co
Dark Sterling, lab
Davis A L, watchman Alaska Northern Ry
Davis Alvin F (Alaska Transfer)
Davis E L
Davis Winnie, tmstr Alaska Transfer
Daykin Mary Mrs (wid W H)
Daykin Wallace, hlpr Brown & Hawkins
Daykin Walter J, lineman Alaska Northern Ry
De Bon Fred F, clk Northern Realty & Insurance Agency
Dee Sing, cook Leo Margules
De Line Horace C, chf clk Alaska Northern Ry
de Sherbinin Andw G (Whitehead & de Sherbinin)
Devine Geo B, brtnr Morris & Devine
Devine Wm (Morris & Devine)



Acorn Stamp Co.
Rubber Stamps, Seals, Stencils,
Badges, Checks, Etc.

219 Columbia St.

Seattle, Wash.



LOWMAN & HANFORD CO.

Booksellers, Stationers, Printers, Engravers - - - Seattle

ALASKA GAZETTEER AND DIRECTORY (1915-16)

467

Dewitt Wm, registered guide
Dodge C B, capitalist
Dore Robt, prospector
Doremus Frank E, brtnr
Dorff A A, lab
Dorff Fred, section foreman Alaska Northern Ry
Dougherty Hugh (Dougherty & Stewart)
Dougherty Richd H, carp
Dougherty & Stewart (Hugh Dougherty, J A Stewart), real est and ins
Driesbach C W & Co, E J Warner mgr, lumber dlrs
Dubreuil John, lodgings
Duffy J M, cook
Dunfranwold Gold Mines (Sunrise), Duncan M Stewart pres
Dunlap Danl D, surveyor
Edes Wm C, chairman Alaska Engineering Commission
Edwards Valdemar, miner
Eggerton Frank, miner
Eide Anton, supt Alaska Road Commission
Eklund Swan, lab
Ellis H W, gen contr
Ellsworth Harry E, assayer and guide
Ellsworth Jessie Mrs, dry gds and millinery
Ennis Frank G (Ennis & Campbell)
Ennis & Campbell (Frank G Ennis, J Jos Campbell), ins
Ergard Isaac, boatman

Men Who Work Require Serviceable Garments MT. HOOD SHIRTS AND OVERALLS

"The Warranty Bond" Lines ARE MOST SATISFACTORY

MANUFACTURED BY

FLEISCHNER, MAYER & CO., Portland, Oregon

Erickson Alex
Erickson Emma M, bkpr Brown & Hawkins
Ericson Aaron, U S game warden
Estes Ashby D, private sec to chairman Alaskan Eng Comm
Evanoff V (Fusick & Evanoff)
Evans Isaac, dep U S marshal
Evans J B
Evinson A, waiter Ernest Levin
Ewsweiler Chas, registered guide
Fairbanks Rooms The, W A C Baldwin mgr
Ferguson John, miner
Filice R J, waiter
Finnegan Thos J
Fisher J D, eng
Fogelstrom W J H, bridge eng Alaskan Eng Comm
Forest Isaac E, with Seward Soda Wks
Forgy Ethel Mrs, prin Seward Public School
Frank John (Frank & Lechner)
Frank & Lechner (John Frank, Chas Lechner), plumbers, lodgings
Fredericks Geo, baker Fusick & Evanoff
Freil Edward, lab
Fridell I J, prospector
Friedman Arthur H, clk B W Hettle
Friend C P, whsmn Brown & Hawkins
Frye-Bruhn Co, Jas Constable mgr, meats
Fusick Louis (Fusick & Evanoff)

Hospital

FURNITURE

Aseptic
Furniture
Mnfg. Co.

The Only Factory
of Its Kind in the
West

1532 1st Av. S.
Seattle

Great Western Smelting & Refining Co.

XXX NICKEL BABBITT Seattle, Washington

CARMAN MANUFACTURING CO.
 Furniture, Mattresses, Springs, Cots, Iron Beds, Etc.
 We Specialize in Packing for Alaska Shipments
 Salesrooms: 1417 4th. Av. Factory: Cor. Railroad Av. & Massachusetts
 SEATTLE, WASHINGTON

468

(1915-16) R. L. POLK & CO.'S

Goodrich

STEAM

HOSE

AND

WHITE

DREDGE

BELT

SAVE

YOU

MONEY

The

B. F.

Goodrich

Rubber

Co.

Seattle

Factories:

AKRON, OHIO

SEWARD—Continued

Fusick & Evanoff (Louis Fusick, V Evanoff), bakers and lodgings
 Gamble Thos, restaurant
GATEWAY PUBLISHING CO (Bernard M Stone), Publr's The Seward
 Gateway (Daily and Weekly)
 Gehling Robt C, miner
 Geleff Geo, clk Fusick & Evanoff
 Gelles G, lab Alaska Northern Ry
 General Contracting & Building Co Inc
 Gilpatrick John C, miner
 Goetz Isabel Mrs, stngr Bank of Seward
 Golightly H J, longshoreman
 Goodrich Wm A, barber

J. L. GRAEF SEWARD, ALASKA

HARDWARE, STOVES, RANGES, FURNITURE
 SHEET METAL AND PLUMBING SHOP, HOT AIR HEATING

GRAEF JACOB L, Hardware, Sheet Metal Works, Sporting Goods, Furni-
 ture, etc (See adv)

Graff John H, sec-treas-lineman Seward Light & Power Co

Graff Saml M, pres-mgr Seward Light & Power Co

Grant Geo D, civ eng

Ship Chandlers, Ship Riggers, Ship Stores

Fishermen's Supplies **SUNDE & d'EVERS Co**

Sailmakers

Colman Dock SEATTLE

Gray Arthur B, mesgr U S Military Telegraph & Cable System

Gray Jas A (Rich & Gray)

Green Jas, longshoreman

GREEN J LINDLEY, Lawyer, Over Bank of Seward

Gregerson Al, mining

Guinber V, freighter and trapper

Guy Chas, cook J M Cummings

Haash H J, salsn Brown & Hawkins

Graham Duplicating Bureau

BLUE PRINTING AND RECTIGRAPH WORK

(Photographic Copies)

Architects' and Engineers' Supplies

1011 A Street

TACOMA, WASHINGTON

Hachey Jerome, mining

Hall David, lab

Hall John, lab

Hamilton J W, mining

Hammond Jas G, butcher Carstens Pkg Co

Hardy Albert, lab

HARDY GASTON, Vice-Pres The Harriman National Bank of Alaska,
 at Seward

Harmon Clifford C, miner

Harmon Hod A, brtnr

ROLLE-BARNES COMPANY
 DRY GOODS SPECIALTIES - NOTIONS
 WHOLESALE ONLY SEATTLE

ROCK DRILLS

THE ACCEPTED INGERSOLL-RAND TYPE

Stock Carried in Seattle Warehouse

INGERSOLL - RAND CO.

300 Colman Bldg., SEATTLE

NEW YORK

JUNEAU

See Page 58

ALASKA GAZETTEER AND DIRECTORY (1915-16)

469

HARRIMAN NATIONAL BANK OF ALASKA, AT SEWARD, THE, Joseph W Harriman (New York) Pres, John A Noble (New York) Vice-Pres, Henry B Wesselman (New York) Vice-Pres, Gaston Hardy Vice-Pres, Erich Lucas Cashier, Sidney B Congdon Asst Cashier, Merrill A Martin Assayer (See front edge and p 7)

Hartman F, bridgeman Alaska Northern Ry
Harvey C Mrs, dressmkr
Harvey D W, lab Alaska Northern Ry
Harvey John T (Harvey & Co)
Harvey & Co (John T Harvey), bldg contrs
Haugen C K, lab
Hawkins Thos W (Brown & Hawkins)
Hayden Jas R (Lane, Whitehead & Holden), pres-mgr Kenai Alaska Gold Co
Haynes Sherman, real est
Helm John, carp
Belmer H T, lab
Hendricks John, rancher
Henry Wm P (Henry & Rodgers), Daggett blk
Henry & Rodgers (Wm P Henry), real est Daggett blk
Herron Chas E, pres Sunrise Dredging Co
Hess Lena, waiter J M Cummings
Hettel Bernard W, cigars, confr and stationer
Hewitt Chas F, condr
Hewitt Grace C Mrs, pub stngr Daggett blk

The "A. T. SPATZ" CAFE The Cafe That "Quality" Made
Alaskan Hotel Building, JUNEAU, ALASKA

Hickey Hazel Mrs, clk P O
HICKEY PHILIP J JR, Postmaster
Hildreth Henry H, mining
Hilek Christ, lab Alaska Northern Ry
Hoaglund Oscar W, carp
Hoben Harry V (Alaska Transfer)
Hoffman J J, lab Alaska Northern Ry
Hofman J H, rancher
Homes M E, lab Alaska Northern Ry
Hood J, carp
Hopkins Hayward V, brtnr C F Wamsley
Hopkins Robt, lab
Horner Melvin, chief of fire dept

POLK'S OREGON AND WASHINGTON GAZETTEER AND DIRECTORY
Contains an Accurate Business Directory and descriptive sketch of every City, Town and Village, lists of Government and County Officers, Commissioners of Deeds, State Boards, Statutory Provisions, Population, Terms of Courts, Postmasters, Postoffices, Express, Telephone and Telegraph Offices, justices of the Peace, Hotels, Newspapers, etc.
R. L. POLK & CO. SEATTLE, WASH. Publishers.

St. Paul & Tacoma Lumber Co.
Tacoma, Washington
LUMBER, LATH, SHINGLES, CEDAR SIDING, CREOSOTED LUMBER, POLES, PILING, PAVING BLOCKS, ETC.

See Page 49

STEAM OIL Engines FOR MARINE OR STATIONARY WORK USE KEROSENE, DISTILLATE OR FUEL OIL
Vancouver, B. C. Northwestern Iron Works Seattle, Wn.

Explosives

Mining and Blasting Powders

LIONITE POWDER CO.

PORTLAND, OREGON

ALASKA GAZETTEER AND DIRECTORY (1915-16)

471

James Leander L, mining
 James Leander L jr, lawyer
 James Ward, bkpr Gateway Publishing Co
 Janas Geo
 Jenkins L Elizabeth Mrs
 Johnson Chas, lab
 Johnson Chas, miner
 Johnson Chas, porter Benson & Co
 Johnson Edwd, miner
 Johnson Fred, tmstr Alaska Transfer
 Johnson Geo, plastering contr
 Johnson Hugo, lab
 Johnson John, miner
 Johnson John A, carp
 Johnson J D, miner
 Johnson J J, miner
 Johnston J D, farmer
 Johnston Robt, lab
 Jones J C, lab
 Jones Wm Bethlehem, janitor Bank of Seward
 Jordan G, lab Alaska Northern Ry
 Juckoff Jas, cook
 Junte J, barber
 Kacerosky John, clk Brown & Hawkins
 Kapsilwanis John, mining

SWEATERS

Saxony Knitting Co.

Saxony Knit

UNDERWEAR

SEATTLE

Keely Patk, carp
 Kenai Alaska Gold Co, Jas R Hayden pres-mgr
 Kenai Dredging Co, Lee V Ray rep, mining
 Kenai Mining & Milling Co, Frank E Youngs pres, S O Morford v-pres,
 L F Youngs sec-treas
 Kerns Geo M, expmn
 King Thos, blksmith
KINGSLEY WM, Architect, Seward and Seattle
 Kloss Florence Mrs
 Koehler Leon, furn dlr
 Koontz Neil J, mgr Casino Theatre, Daggett blk
 Korth Frank, tinsmith Brown & Hawkins
 Korth Una J, clk Alaskan Eng Conn
 Kosman Geo, cook
 Kosmos Geo, lineman Alaska Northern Ry
 Krantz Ed, lab Alaska Northern Ry
KREFTING CHARLES, The Pioneer Contractor and Builder (See adv)
 Kridler Geo M, draftsman Wm Kingsley
 Krogh P, lab Alaskan Northern Ry

TURNING

GLAZING

CHAS. KREFTING, Contractor and Builder

**THE PIONEER
 CABINET WORK A SPECIALTY**

Estimates Given. Shop in Connection

THIRD AVE.

SEWARD, ALASKA

Butter, Eggs & Cheese

Ellensburg Produce
 Company
 915 Western Av.
 Seattle Wash.

Fidelity Adjustment Company
Collections--Adjustments

427-28 Pioneer Bldg.

Tel. Ell. 1643

Seattle

BELTING PACKING HOSE

SPECIAL MOULDED WORK, VALVES, GASKETS, ETC.

GOODYEAR RUBBER CO.

E. H. PEASE, President

587-591 Market St., SAN FRANCISCO, CAL. 61-67 Fourth St., PORTLAND, ORE.

472

(1915-16) R. L. POLK & CO.'S

HAPPY HOME CANNED GOODS

HIGHEST GRADE. LUSCIOUS FRUITS AND SELECTED VEGETABLES

Schwabacher Bros. & Co., Inc., Distributors, SEATTLE

SEWARD—Continued

Kyle J M, miner
Laberee B R, real est
Lane Derick (Lane, Whitehead & Hayden), pres Primrose Mining Co
Lane R, A C Camp Seward No 21, A B
Lane, Whitehead & Hayden (Derick Lane, Guy B Whitehead, Jas R Hayden), real est
Larsen Christ, carp
Larsen Edwd, longshoreman
Larson Aug, miner
Larson J, lab Alaska Northern Ry
Larson Oscar, brtnr
Larson Oskar, elec eng Seward Light & Power Co
Laubner Fred, rancher
Lean Chas C, blksmith
Lechner Chas (Frank & Lechner)
Leiran John, carp
Levin Ernest, restaurant
Leyden Henry, cement wkr
Liebricht Wm, lab
Linn Matt, lab
Lippert Emma Mrs, dressmkr
Lipps Frank, barber W A Goodrich
Little Alex, whsmn J L Graef
Lloyd Fred W, salsn

GRATON & KNIGHT MFG. CO.

BELTING, SOLE LEATHER, HYDRAULIC LEATHER

SEATTLE, WASH. BELTING SUPPLIES 320 OCCIDENTAL AV.

Long Howard L, carp
Losness Nicholas, janitor Alaskan Eng Comn
Loughlin G J, rancher
LUCAS ERICH, Cashier The Harriman National Bank of Alaska at Seward
Lucas Walter T, realest and ins, city clk and magistrate
Lund Louis, lab
Lyall Andw (Lyall & Smith)
Lyall & Smith (Andw Lyall, Francis G Smith), confrs
Lynn Mabel
McCarron Jas H, miner
McConety Thos, piledriver foreman Alaska Northern Ry
McConnell Emmet, clk
McConnell Guy E, lab Alaska Northern Ry
McConnell Jas, sec foreman Alaska Northern Ry
McConnell Richd, capitalist
McDONALD ALEXANDER H, Agt Alaska Steamship Co
McEwan Danl, seaman
McGee Jas, waiter Williams & Mitchell
McGrath J J, editor The All-Alaska Review
McGuire Frank, carp
McGuire Jas J, messenger service
McLean Fannie Mrs, bakery and restaurant
McNeily Wm A (Hotel Seward)
McPherson C A, mining
MacKenzie Fred, bldg contr

Tile--Marble--Onyx--Terrazzo
CHAS. W. RODGERS COMPANY

See Page 93

Maritime Bldg.

FIREPLACE ACCESSORIES

Seattle

AKOZ

A Natural Mineral Remedy for
 Stomach Trouble, Chilblains,
 Frost Bites, Catarrh
 All Drug Stores in Oregon and California
NATURA CO., San Francisco
 See Page 65

RHEUMATISM

Madson G, lab
 Madson John C, miner

JOHN P. MANTELL GENERAL CONTRACTOR

Dock, Warehouse and General Building Construction. Mining and Milling
 Plants Installed

The Most Complete Construction Plant in the Territory

SEWARD Pile Drivers, Concrete Mixing Machinery, Etc. ALASKA

MANTELL JOHN P, General Contractor, Building and General Construction Work, Concrete Work, Etc (See adv)

Manthey Gus, fireman Alaska Northern Ry

Margules Leo, saloon, bowling, billiards, furn rms

Marrion Z, lab Alaska Northern Ry

Martin A T, bridgeman Alaska Northern Ry

Martin Chas E, saln Brown & Hawkins

MARTIN MERRILL A, Assayer The Harriman National Bank of Alaska
 at Seward (See front edge and p 7)

Martin Peter, lab Alaska Northern Ry

Mathews C H, lab Alaska Northern Ry

Mathison C, lab

Mathison Durward C, cigars

Mattson Geo, lab

Mattson John, lab

Mayle Fred, tmstr Alaska Transfer



GRADING TOOLS

PLOWS, SCRAPERS, ROAD
 DRAGS, ETC.

SEATTLE

Western Ave. and Columbia St.

Meehan Jos, tmstr

Methodist Episcopal Church (Rev C F Cook)

Mile 4 Mining Co, L V Ray pres

Miller Fred C, barber

Miller Michl G (Miller & Rystad)

Miller & Rystad (Michl G Miller, Ingvald Rystad), lodgings

MINERS' STORE THE (Frank J Cotter), Clothing, Men's Furnishing
 Goods, Boots, Shoes, Etc

Mitchell Geo (Williams & Mitchell)

Modina Geo, cook Cooper's Cafe

Moe O, lab Alaska Northern Ry

Morford Curtis R, lawyer, atty at Seward for Alaska Northern Railway
 Co, sec Alaska Trust & Development Co

Morford S O, lawyer, v-pres Kenai Mining & Milling Co

Morris Geo H, clk Hotel Seward

Morris Jos B (Morris & Devine)

Morris & Devine (Jos B Morris, Wm Devine), saloon

Morse A, lab Alaska Northern Ry

Moses Otto, prospector

Moyer Clyde D, file clk Alaskan Eng Comn

Murphy Albert, lab

Murphy Hugh J (Anderson & Murphy)

Murphy T P, lab

Murray Jas C, mining

Muscott Pearl Mrs, hairdresser and massage

Myers Chas A, mgr Carstens Packing Co, mayor of Seward

SMITH, DANIELS & KELLER

WHOLESALE

Men's, Women's and Children's
 Underwear, Hosiery, Etc., Staple
 and Fancy Notions
 SEATTLE

PACIFIC ALASKA NAVIGATION CO. "THE ADMIRAL LINE"
 PUGET SOUND-ALASKA ROUTE—S. S. ADMIRAL WATSON AND ADMIRAL EVANS
 FIRST CLASS PASSENGER AND FREIGHT SERVICE
 PIER 1, SEATTLE

ARONSON'S JEWELERS AND SILVERSMITHS WASHINGTON AND BROADWAY, PORTLAND, ORE.

ALASKA GAZETTEER AND DIRECTORY (1915-16)

475

Pierce Minnie, waiter Cooper's Cafe
 Pilcher B C, with Wieble Hydraulic Mining Co
 Pittock Asa (Pittock & Woitek)
 Pittock & Woitek (Asa Pittock, Jos Woitek), cleaning and pressing
 Pöehlmann Max W, prospector
 Pöehlmann Otto H, pharmacist Vaughan & Son
POINDEXTER G BENJ, Mgr Alaska Land & Development Co Inc
POST OFFICE, Philip J Hickey Jr, Postmaster
 Post Publishing Co, publr Alaska Post (daily and weekly)
 Posth Fred, miner
 Potter A B, fireman Andw Rasmussen
 Powers Frank W, saloon
 Primrose Mining Co, Derick Lane pres
 Provinse Edgar W (Seward Transfer Co)
 Pullen Percy, motorman Alaska Northern Ry
 Quest Robt, chief of police
 Qulakaski P Y, lab Alaskan Northern Ry
 Rainey Louis, cook Mrs Fannie McLean
 Ralph John
 Ramsey E R, lab
 Rasmussen Andw, saw mill
 Rasmussen Henry, carp
 Rautio Axel, driver Brown & Hawkins
 Ray Lee V, lawyer, pres Mile 4 Mining Co, rep Kenai Dredging Co
 Reed J H, head clk Seward Commercial Co

LOCOMOTIVES CARS TRACTORS SCRAPING MACHINERY
 Railway Mining and Contractors' Supplies and Repairs

Machinists
 Blacksmiths

NISQUALI-RUSSEL CAR & LOCOMOTIVE WORKS

Boilermakers
 Car Builders

TACOMA

Reese Ollie, miner
 Remillard Geo, miner
 Remona Michl, lab Alaska Northern Ry
 Renstrom Eric A
 Revelle H E, mail carrier to Iditarod
 Rich Vida
 Rick Virgil
 Rich Wm E (Rich & Gray)
 Rich & Gray (Wm E Rich, Jas A Gray), barbers
 Richards Henry, boomman Alaska Northern Ry
 Richards Jos, tmstr
 Roberts Albert W, miner mile 23½, Roosevelt
 Robertson Jas A, miner
 Robinson Jas, boomman Alaska Northern Ry
 Rogulich John, lab Alaska Northern Ry
 Rolfs J, lab Alaska Northern Ry
 Romig Jos H, phys, hospital, real est, city treasurer and health officer
 Romig Robt
 Root Frances, tchr Seward public sch
 Root Wm E, pharmacist
 Roper Jas H, clk Alaskan Eng Comn
 Rose John, pin setter Leo Margules
 Rosness Alfred, car repr
 Rosness John, fireman
 Rosness & Vaughn (Resurrection Bay), salmon saltery
 Rothfus Walter, lab

Sour- doughs

Call on

Me

The Right

Dr.

Brown

The

Dentist

DR. J. BROWN

627 First Ave.

SEATTLE

Portland Open-Air Sanatorium, Portland, Ore.

For the treatment of diseases of the lungs. Address all communications to the Medical Directors, Drs. E. C. & E. W. Matson, 1021 Corbett Bldg., Portland, Ore. Write for illustrated booklet. See full page advertisement elsewhere in this directory.

Bogardus Testing Laboratories

ASSAYERS AND CHEMISTS

SEATTLE

INSPECTING AND TESTING ENGINEERS

Established 1890

ALASKA GAZETTEER AND DIRECTORY (1915-16)

477

Simpson Louis, mining
Simpson Wm A, millwright
Singer H G, registered guide, Kenai
Skeen Frank P, mining
Skeen-Lechner Mining Co., S O Morford pres
Sky Danl, shoemkr
Slater John, mining
Sloan John M, phys
Small Floyd Wm, butcher
Smalley Saml, rancher
Smith Francis G (Lyaal & Smith), real est and ins
Stalensky Solomon (City Dye Works)
Steil Peter, comn
Stender Martin J R, cigar mnfr
Stevenson C E, mining
Stevenson John W, mining
Stewart Duncan D, miner
Stewart Duncan M, pres Alaska Trust & Development Co and Dunfranzold Gold Mines
Stewart Jas A (Dougherty & Stewart)
Stoddard Wm W, asst postmaster
STONE BERNARD M (Gateway Publishing Co), Publisher The Seward Gateway (Daily and Weekly), Manager The All-Alaska Review
Stotko John P, saloon and mining
Stowe A F, lab

See Page 49

St. Paul & Tacoma Lumber Co.

TACOMA, WASHINGTON

Strasser John, janitor
Straupinger Frank, miner
Street C, lab
Strom Chas, lab
Sturdavant J A, logger
Sullivan John, clk P O
Sunrise Dredging Co (Sunrise), Chas E Herron pres, Thos P Barnes sec-treas
Swanson John, lab
Swanson Ole, lab
Swanson Peter, lab
Swanson Swan, lab
Sweazey Benj, registered guide
Sweet F Grant
Swenson Henning, lab
Tallasen Thos, lab
Tarlswick C, lab Alaska Northern Ry
Taylor Arthur C, expmn
Taylor Buck, brtnr Morris & Devine
Taylor Frank A, salsn Brown & Hawkins
Tecklenburg Chas A (Benson & Co)
Tecklenburg Mary Mrs, furn rms
Terminal Band, C W Pierce leader
Thede E A, wharfinger Alaska Northern Ry
Thompson R L, clk Brown & Hawkins
Tiffany Eugene A, miner



THE BORDER LINE

Southeastern
Alaska
Safety, Comfort,
Lowest Rates

S. S. ALKI

From Pier 4, For

Ketchikan,
Wrangell,
Petersburg,
Thane,
Douglas,
Treadwell,
Juneau,
Sitka.
Passengers and
Freight

S. S. DESPATCH

From Pier 4, For
Ketchikan and
West Coast Prince
of Wales Island
Points to Port
Armstrong,
Hoonah, Thane,
Douglas, Tread-
well, Juneau.
Passengers and
Freight.

S. S. NORTHLAND

For Ketchikan and
All Southeastern
Alaska Points.
Freight and
Explosives.

The Border Line Transportation Co.

Ticket Office 103
Yesler Way

Wharf Ticket
Office Pier 4
SEATTLE, WASH.

UNION CONSTRUCTION CO.

BUILDERS OF

PLACER DREDGES, UNION DRILLS, NEILL JIGS

604 MISSION ST.. SAN FRANCISCO. CATALOGUES

John A. Roebling's Sons Co.

OF CALIFORNIA

WIRE ROPE AND WIRE ROPE FITTINGS

900 FIRST AV. SOUTH

SEATTLE, WASH.

TEL. MAIN 4992

478

(1915-16) R. L. POLK & CO.'S

**"Isaacson's" NON-BREAKABLE Alaska
THAWING POINTS**

**THE ONLY POINT ON THE MARKET
That Will Not Break**
Hose Securely Fastened With Clamp and
Spring Washers

Seattle

Write for
Prices, Etc.

SEWARD—Continued

Tolman John C, guide
Torrey Frank L, painter and decorator basement Daggett blk
Tozier Herbert, mining, mgr Alaska Northern Ry
Tubby Oliver G, chief draftsman Alaskan Eng Comm
U S Commissioner, M Jos Conroy
U S Marshal, Isaac Evans deputy
U S Military Telegraph & Cable System, Wm J Zwick in charge
Urbach Leon, clk Seward Commercial Co
Valdez Creek Mining Co, Alfred H Bryant supt
Vaughan Elgin (Vaughan & Son), bridgeman Alaska Northern Ry
Vaughan Henry J (Vaughan & Son), piledriver eng Alaska Northern Ry
Vaughan K D, eng
Vaughan & Son (Henry J and Elgin), drugs
Vick Phil, hlpr Williams & Mitchell
Vickery John D, miner
Vital Aug, hotelkpr
Walker Jas, brtnr
Walmsley Chas F, saloon
Walsh Jas, foreman J P Mantell
WALTERS JAS, Janitor The Harriman National Bank of Alaska at
Seward
Walters Jas jr, driver Seward Commercial Co
Ward Thos M, asst eng Alaskan Eng Comm
Warner Ed, miner

BONDS, WARRANTS, MORTGAGES AND BANK STOCKS SAFE DEPOSIT BOXES FOR RENT

WM. D. PERKINS & CO., BANKERS SEATTLE, WASHINGTON

Warner Ernest J, mgr C W Driesbach & Co
WATSON B F, Gen Agt Pacific Alaska Navigation Co and Wells Fargo
& Co Express
Way Palmer, tinsmith J L Graef
Weaver Benj N, carp
Weaver Wm G, guard U S jail
Weierman Wm, carp
WELLS FARGO & CO EXPRESS, B F Watson Gen Agt
West Mrs, housekpr
WESTERN DRY GOODS CO, F E Parsons (Juneau) Agt, Wholesale Dry
Goods, Etc (See left top lines and p 27)
Wheatley Alvin H, asst treas Alaska Northern Railway Co
White John C, brtnr Leo Margules
White Jos H, boat bldr
White Martha, prophylactist Daggett blk
Whitehead Geo S (Whitehead & de Sherbinin)
Whitehead Guy B (Lane, Whitehead & Hayden)
Whitehead & de Sherbinin (Geo S Whitehead, Andw G de Sherbinin),
bldg contrs, mnfrs agts
Whitfield D S, city eng
Whitney Clarence E, brtnr C F Wamsley
Whitney Frank H, miner
WHITTEMORE E L (Overland Hotel) (See p 470)
Whittlesey Wm H, asst U S attorney
Wieble Hydraulic Mining Co, Frank L Ballaine administrator
Wiley Saml, tmstr

LINK-BELT AND DODGE PRODUCTS CO.

SEATTLE, WASH.—PORTLAND, ORE.

ELEVATING, CONVEYING, POWER TRANSMISSION

CATALOGS ON REQUEST

OAK, HICKORY AND OTHER HARDWOODS

EHRlich-HARRISON CO.

SEATTLE

ALASKA GAZETTEER AND DIRECTORY (1915-16)

479

Willard John F W, lumberman
 Williams Crad (Williams & Mitchell)
 Williams Ned, brtnr Morris & Devine
 Williams & Mitchell (Crad Williams, Geo Mitchell), restaurant
 Wilson F, sign writer basement Daggett blk
 Wineberg A (Geo Carrol & Co)
 Winnie L L, lab
 Wohlmacher May Mrs (Sanitary Laundry)
 Wohlmacher Wm A (Sanitary Laundry)
 Woitek Jos (Pittock & Woitek)
 Woodaman Fred, miner mile 29½, Moose Pass
 Woodworth Frank, miner
 Woolf Sidney (Geo Carrol & Co)
 Wright Erwin, linotype opr Gateway Publishing Co
 Wright John W, foreman Gateway Publishing Co
 Yeager J C, phys
 Youngs Frank E, pres Kenai Mining & Milling Co, city councilman
 Youngs L F, sec-treas Kenai Mining & Milling Co
 Zero Wm, lab Alaska Northern Ry
 Zwink Wm J, in charge U S Military Telegraph & Cable System

SEWARD CITY. A mining settlement on Lynn Canal, 60 miles nw of Juneau the nearest banking point and 25 se of Haines. Jualin is the nearest p o.

SHAGELUK. A native settlement on the Innoko River, 100 miles ne of Holy Cross (Koserefsky), the nearest p o. A government school for natives is located here.

"TIGER" STEEL SLEEPING BUNKS—DOUBLE AND SINGLE DECK. AERIAL TRAMWAYS, ETC.

Broderick & Bascom Loggers Supply Co.
 623-5 WESTERN AVE. SEATTLE, WASH.

SHAKAN. Pop 150. A p o, first settled in 1884, located on the west coast at the upper end of Prince of Wales Island on Sumner Straits, 70 miles w of Wrangell. Ketchikan, 120 miles se, is the nearest banking point. Has a Presbyterian mission. Principal industries are fishing, canning, lumber manufacturing and mining. Mail boats weekly during summer and semi-monthly during winter months to Wrangell, fare \$3.00. Benson Wm Rev (Presbyterian Mission)

COUGHLAN E D J, Postmaster and Supt Gorman & Co
 Demmert Bros, gen mdse
 Gorman & Co, E D J Coughlan supt, salmon canners
 Shakan Salmon Co, salmon canners
 Wait R W, asst postmaster

SHAKTOLIK. A native settlement at the mouth of Bonanza Creek on Norton Sound, 150 miles e of Nome, the nearest banking point and 35 n of Unalakleet, the nearest p o.
 Bonanza Creek Roadhouse
 Ivanhoff Stevan, roadhouse

SHAMAN VILLAGE. A native village on the Yukon River, 60 miles ne of Rampart, the nearest p o.

SHEEP CREEK. Name changed to Thane, which see.

SHEEP CREEK. A woodyard and landing on the Yukon River near the mouth of Sheep Creek, 30 miles n of Eagle, the nearest p o.
 Laughlin E L, roadhouse

SHELTON. Pop 50. A p o and distributing point for camp supplies, first settled in 1900, at the head of navigation on the Kuzitrin

P
I
O
N
E
E
R

BINDERY
AND
PRINTING CO.

STATIONERS
ENGRAVERS

BLANK BOOK

MAKERS
LOOSE LEAF
LEDGERS

T
A
C
C
O
M
A

\$66.00 ROUND TRIP for ALASKA

EXCURSION, INCLUDING BERTH AND MEALS, ON BEST BOATS

ALASKA STEAMSHIP COMPANY



WILSON'S BOAT AND SHIPYARD

JOHN WILSON, Proprietor

Pleasure or Commercial Boat Building and Repairing—Dory Building for the Fishing Trade a Specialty

SEATTLE,

WASH.

480

(1915-16) R. L. POLK & CO.'S

312 Powles Bldg.,

65 Marion Street

Viaduct

Seattle

Seattle Fur Sales Agency

**Exclusive Selling Agency for Raw Furs,
Whalebone, Ivory and Curios**

Sas Adv Page

33

SHELTON—Continued

River and the northern terminus of the Seward Peninsula Railway, 10 miles s of Dahl and 90 n of Nome, the nearest banking point. Boat connections with Davidson's Landing, Igloo and Teller.

Alaska Telephone & Telegraph Co
Fix Isadore, hotel and freighter
Fry & Bosch, freighters
Gravem Carrie G, postmaster
Gravem K L, phys and mining
Gunderson Lars, U S Commissioner
Kennedy J D, mining
King C C, deputy U S marshal
Lokke Albert, trapper
Rosenthal Chas, U S Commissioner
Taylor O M Capt, mining

SHIP CREEK. A settlement at the mouth of Ship Creek near Cook Inlet. P o name is Anchorage, which see for names.

SHISMAREF. A discontinued p o and boat landing on Shismaref Inlet, 240 miles n of Nome, the nearest banking point, and 155 n of Teller, the nearest p o.

SHOPS. A railroad, telegraph and telegraph station at the W P & Y Route shops, 2 miles n of Skagway, the nearest banking point and p o.

SHOVEL CREEK. A mining settlement and station on the Council City & Solomon River R R, 40 miles e of Nome, the nearest banking point and 6 n of Solomon, the nearest p o.

ASK YOUR DEALER FOR

Washington Shoe Mnfg. Co.'s
SHOES OF QUALITY

SHUMAN'S MILL. A landing on the Yukon River, 65 miles ne of Rampart, the nearest p o.

SHUNGNAK. A p o, settled in 1898, on the Shignan River, a tributary of the Kobuk River, 250 miles ne of Candle, the nearest banking point, on Kotzebue Sound, 350 ne of Nome, also a banking point, and 250 e of Kotzebue, its shipping point. Mining is the principal industry.

Bean H A, gen mdse
Dahl John J, miner
Dodd John, miner
Eckhart Hugo, miner
Fay Thos, miner
Hill Eric, miner
Knight Benj F, miner
Leapsheare Otto, miner
Lloyd Lewis, miner
Moran M F, postmaster and U S commissioner
Mueller Aug, miner
Myers Eli, miner
Osthenvick Gustav, miner
Ryan Patk, miner
Shea Thos E, miner
Sniverly W L, miner
Stanley Geo, miner
Stickler Fred, miner
Sullivan Frank, miner

LUMBER STETSON & POST
LUMBER CO. SEATTLE, WASH.

"MR. NORTHERNER" ABOUT A HOME ON THE OUTSIDE
Read my ad in Classified Real Estate

F. E. OLLINGER CO., Seattle, Washington

ALASKA GAZETTEER AND DIRECTORY (1915-16)

481

Sullivan Michl, miner
Theilen Harry, miner
Thompson Allen, miner
Twohy Michl, miner
Wilcox A C, miner
Wise John, gen mdse

SHUSHANNA JUNCTION. P o name is McCarthy, which see for full information.

SIMPSON'S ROADHOUSE. A roadhouse on the Chitina-Fairbanks trail, 60 miles n of Chitina and 247 s of Fairbanks.

SINROCK REINDER STATION. Located at the mouth of the Sinrock River, which flows into Bering Strait, 35 miles nw of Nome, the nearest banking point and p o.

SINUK. A M E missionary station, with rural delivery mail service, at the mouth of the Sinuk River, 26 miles nw of Nome. A large government Reindeer Reservation and native school is maintained here.

SITKA. Pop 1,000 Indians, 400 whites. An unincorporated town on the w side of Baranoff Island, 980 miles nw of Seattle, Wn, and 200 miles sw of Juneau, the nearest banking point. Settled by Russians in 1802, and called New Archangel. Historically it is the most interesting town in Alaska, and naturally the most picturesque. Has the finest harbor on the Alaskan coast and a very mild climate. The coldest on record is 6 below zero. Has saw mill, 2 hotels, Episcopal, Presbyterian, Russian Orthodox and Roman Catholic churches. A monthly newspaper, The Verstovian, is published. Has many buildings of interest to travel-

HAPPY HOME CANNED GOODS

Highest Grade. Luscious Fruits and Selected Vegetables

SCHWABACHER BROS. & CO., Inc. SEATTLE
DISTRIBUTORS.

ers, notably the Russian church, that is over 50 years of age and contains many costly and ancient paintings and much treasure, and the Sheldon Jackson museum, which contains a very interesting collection of Alaskan curios. Headquarters of the Agricultural Department, Prof C C Georges in charge. Steamers connect with all Alaskan and Puget Sound points. U S Wireless Station. Exp. Wells Fargo & Co. Mail 3 times a week. Postmaster and U S Commissioner, Robt W Dé Armond. **ALASKA STEAMSHIP CO,** Chas M McGrath Agt (See left top, left side and right bottom lines and pp 96 and 97)

Albertstone Reuben

Alcorn W A, clk W P Mills Co

Anderson Geo, billiards

Arctic Brotherhood, Camp Sitka No 6, meets every Monday evening.

J W Green A C, Geo E Howard A R

Ashball Harry Mrs (The Baranoff Hotel)

BARANOFF HOTEL THE (Mrs Harry Ashball), Home Cooking

Barron Geo, gen mdse

Bauer H A, eng

Booth Fisheries Co, J P McNeil mgr

BORDER LINE TRANSPORTATION CO (See right side lines and p 98)

Bourhill Isabella, tchr Sheldon Jackson School

Bredvik Nels, hardware

Brightman J L, jail guard

Cathedral of Archangel, St Michael (Russian Orthodox) (Rev John Zeltagona)

Catholic Church, Lincoln

Mining, Marine and Canning Machinery Manufacturers

Repair Work of All Kinds. Cylinder Boring and Packing. Ship, Boat and Launch Repairs
Mast and Spar Makers

Wright & Smith Machine Works, Seattle, Wn.

Pacific Alaska Navigation Co. "The Admiral Line"
PUGET SOUND-ALASKA ROUTE—S. S. ADMIRAL WATSON AND ADMIRAL EVANS
FIRST CLASS PASSENGER AND FREIGHT SERVICE
PIER 1, SEATTLE

Write for Our General Catalog of Dry Goods, Notions and Furnishings

Western Dry Goods Co., Wholesale

SEATTLE, WASH.

482

(1915-16) R. L. POLK & CO.'S



Dr.
Edwin J.
BROWN
D. D. S.

Seattle's Leading
Dentist

713 First Avenue,
Union Block

Established 25
Years; All Work
Guaranteed 15
Years.

BEWARE of imi-
tators.

My name is not
"J" but

EDWIN J.
BROWN

SITKA—Continued

De Armond Robt W, postmaster and U S Commissioner, clk Sitka School Board
De Groff Lena Mrs, capitalist
Dunklee F E, chf elec U S Wireless Station
Episcopal Church (St Peter by The Sea) (Rev Geo E Howard)
Eubank Walter R, logger
Fenn H B, tchr Sheldon Jackson School
First Presbyterian Church
Gamble John E, agt Wells Fargo & Co Express
Georgeson C C, special agt U S Dept of Agriculture
Goodell John, deputy U S marshal
Haley Chas, gen mdse
Haley Julia, curios
Haley Thos, transfer
Hirst Bernard, gen mdse
Holm Oscar, tailor
Howard Geo, leader Sitka Cornet Band
Johns C L, curator Sheldon Jackson Museum, supt Sheldon Jackson School
Johnson Fred, laundry
Johnston Jas W, phys in charge Sitka Hospital
JUNEAU STEAMSHIP CO, Chas M McGrath Agt (See pp 94 and 322)
Kaznakoff John, mining
Kirchheiner Chas, clk Chas M McGrath
Kostrometinoff Peter J, gen mdse

American Dredge Building & Construction Co.
503-4 PIONEER BUILDING, SEATTLE, WASH.
SPECIALLY DESIGNED GOLD DREDGES AND PROSPECTING DRILLS
FOR ALASKA B. BERNARD, MANAGER

McBride Harry F, miner
McGRATH CHAS M, Dry Goods, Notions, Ladies' and Men's Furnishings, Groceries, Drugs and Drug Sundries, Fishing Supplies, Agt for Pacific Coast Steamship Co, Alaska Steamship Co and Juneau Steamship Co
McNeil J P, mgr Booth Fisheries Co
Mallett Winona, music tchr Sheldon Jackson School
MERRILL E W, Art Photographer, Alaskan Indian Curios
Millmore House (San Sing), furn rms
Mills L M, v-pres-sec W P Mills Co Inc and Sitka Water & Light Co
Mills Waldo C, clk W P Mills Co
Mills Wm P, pres W P Mills Co Inc, Sitka Water & Light Co and Sitka Wharf & Power Co, treas Sitka School Board
Mills W P Co Inc, Wm P Mills pres, L M Mills v-pres-sec, gen mdse and saw mill
Moses Chas, gen mdse
Neilson J P, fireman W P Mills Co
Oakes Frank P, bkpr W P Mills Co
Olson Melcher, clk Bernard Hirst
Pacific Coast Steamship Co, Chas M McGrath agt
Parker May, tchr Sheldon Jackson School
Perry John, opr in charge U S Cable Office
Peterson John H, gen mdse
Potter Eleanor, tchr Sheldon Jackson School
Post Office, Robt W De Armond postmaster
Presbyterian Church (First)

Simmons Manufacturing Company

1st Av. So. and Massachusetts St., SEATTLE, WASH.

Brass and Steel Bedsteads

Pre
Ree
Ree
Ric
Rol
Ron
Rus

St
San
She
She
She
Shi
Shc
Silv
Siti
Siti
Siti
Siti
Siti
Siti

Sm

Ste
Ste
Ste
Ste
Th
Til
Til
Tr
Tr
Tu
U
U
U
U
Ve
W
W
W
Yc
Yc
Ze

LOWMAN & HANFORD CO.

Office Furniture, Engineering Supplies - - Seattle

ALASKA GAZETTEER AND DIRECTORY (1915-16)

483

Presbyterian Church (Thlingit)
Reed Ross, tchr Sheldon Jackson School
Reese Lenore, tchr Sheldon Jackson School
Rice Geo, plumber
Roll Ferdinand, gen mdse, v-pres Sitka Wharf & Power Co
Roman Catholic Church, Lincoln
Russian Orthodox Church (Cathedral of Archangel St Michael) (Rev John Zeltagona)
St Peter by the Sea Episcopal Church (Rev Geo E Howard)
Sam Sing (Millmore House)
Sheldon Jackson Museum, C L Johns curator
Sheldon Jackson School, C L Johns supt
Sheridan Fredk C, barber
Shields Geo, clk W P Mills Co
Shoup A G, sec Sitka Wharf & Power Co
Silveria Inez Mrs, clk W P Mills Co
Sitka Cornet Band, Geo Howard leader
Sitka Hospital, Jas W Johnston phys in charge
Sitka Public School No 1
Sitka Public School No 2 (for natives only)
Sitka School Board, Robt W De Armond clk, Wm P Mills treas
Sitka Water & Light Co, Wm P Mills pres, L M Mills v-pres-sec
Sitka Wharf & Power Co, Wm P Mills pres, Ferdinand Roll v-pres, A G Shoup sec
Smith Anna, nurse Sitka Hospital

COAST CULVERT & FLUME CO.

PORTLAND (KENTON STATION) OREGON

Corrugated Culverts, Smooth Pipe, Irrigation and Power Flumes, Tanks

Stebbins Dutton L, opr U S Cable Office
Stevenson Frances, nurse Sheldon Jackson School
Stevenson Lottie, tchr Sheldon Jackson School
Stocks A R, tchr Sheldon Jackson School
Thlingit Presbyterian Church
Tilson Alfred, clk W P Mills Co
Tilson Thos, bakery
Tilson Thos jr, clk Thos Tilson
Treischeldt John, carp
Treischeldt Nicholas, eng
Treischeldt Peter, chief of fire department
Turner Frank, moving picture theatre
U S Agricultural Experiment Station, C C Georgeson special agt
U S A Signal Corps
U S Cable Office, John Perry opr in charge
U S Wireless Station, F E Dunklee chief elec
Verstovian The (monthly)
Walton Rudolph, jeweler and grocer
Wells Fargo & Co Express, J E Gamble agt
White John A, barber
Winnard Bertha, matron Sheldon Jackson School
Young Bros (John and David), gen mdse
Young David (Young Bros)
Young John (Young Bros)
Zeltagona John Rev (Cathedral of Archangel St Michael) (Russian Orthodox)

Hahlo's Furs Known from Coast to Coast
MANUFACTURED BY
W. H. HAHLO & CO., 1510 2nd. Av., SEATTLE

Great Western Smelting & Refining Co.

Solder, Babbitt, Type Metal of all kinds Seattle, Wash.

H. S. EMERSON CO., INC.
 BROKERS AND JOBBERS OF
FRUITS AND PRODUCE
 CODES: WESTERN UNION A. B. C. 5TH EDITION, MODERN ECONOMY. CABLE ADDRESS EMERSON
 TELEPHONE ELLIOTT 708 P. O. BOX 1846 SEATTLE

484

(1915-16) R. L. POLK & CO.'S

Goodrich

**RUBBER
 BELT,
 HOSE
 AND
 PACKING
 ARE
 BETTER**

**The
 B. F.
 Goodrich
 Rubber
 Co.
 Seattle**

**Factories:
 AKRON, OHIO**

SITKA HOT SPRINGS. See Sanitarium.
SITKOH BAY. A fishing settlement and cannery on Chatham Strait, 5 miles w of Killisnoo, the nearest p o.
SIXTEEN MILE HOUSE. A roadhouse on Chitina-Fairbanks trail, 291 miles n of Chitina and 16 s of Fairbanks, the nearest banking point and p o.
 Johnson John, roadhouse

SKAGWAY

Population 900. Is located in the se part of Alaska on a level tract of land flat-iron shaped, at the head of Lyon Canal and at the mouth of Skagway River, and is almost completely surrounded by high mountains ranging from 1,000 to 8,000 feet high, which form most beautiful and picturesque scenery. This is a telegraph and telegraphone station and the southern terminus of the White Pass & Yukon Railroad, 111 miles long running from Skagway to Whitehorse, Y T, and is 110 nw of Juneau, the capital. The climate is mild and healthful. The town was first settled in 1897, incorporated in 1900, and is governed by a mayor and city council. The offices of a U S commissioner, recorder and deputy marshal are located here. It is a supply station and trading point for the miners of the Yukon and Klondike regions; also a port of entry, and the customs officers of the U S and Canada are located here. It contains 4 hotels, a gymnasium, hospital Catholic, Baptist, Methodist, Episcopal and Presbyterian churches, good graded schools,

TENTS FLAGS PAULINS
"If it's Canvas SUNDE & d'EVERS Co.
we have it" Colman Dock SEATTLE

electric light and water companies, volunteer fire department, a good library and a telephone system. A daily newspaper is published, The Daily Alaskan. Telephone to all points. Wells Fargo & Co Express. Augustus E Kindell postmaster.

City Officials

Mayor—Howard Ashley
 Clerk—Danl W McKay
 Treasurer and Municipal Magistrate—Martin Conway
 Chief of Fire Department—John A Bender
 Marshal—Frank Page
 Watchman—Geo E Carson

Alphabetical List of Names

Abrahams Philip, real est
 Achison Archie J, foreman Skagway Steam Lndy
 Achison Clarence G, miner
 Achison Edwd W, miner
 Achison Harry, circulation mgr The Daily Alaskan
ACHISON LENA S MRS (Skagway Steam Laundry)
 Achison Melvin E, washer Skagway Steam Lndy
 Achison Wm S, sorter Skagway Steam Lndy
 Adams Chas W, fireman
 Adams Hazel, ironer Skagway Steam Lndy
 Adams Irene, opr Alaska General Electric Co
 Aden John, master carpenter W P & Y Route
 Aden Wert D, wharfinger W P & Y Route
ALASKA GENERAL ELECTRIC CO, E T McBrien Pres-Mgr

ROLLE-BARNES COMPANY
DRY GOODS SPECIALTIES - NOTIONS
WHOLESALE ONLY SEATTLE

M
 AL/
 Ala/
 AL/
 AnC
 AnC
 AnC
 AnC
 Arc
 Art
 Asf
 ASI
 Ask
 ASI
 Ask
 ASI
 An
 Baj
 Bal
 Bal
 Bal
 Bal
 Ba:
 Ba:
 Ba:
 Ba:
 SK
 Ba
 Ba
 Be
 Be
 Be
 Be
 Be
 Be
 Be
 E
 Va

MINING MACHINERY

INGERSOLL - RAND CO.

AIR COMPRESSORS, ROCK
DRILLS

300 Colman Bldg., SEATTLE

NEW YORK

JUNEAU

Stock Carried in Seattle Warehouse

See Page 58

ALASKA GAZETTEER AND DIRECTORY (1915-16)

485

ALASKA STEAMSHIP CO, Edwd J Shaw Agt (See left top, left side and right bottom lines and pp 96 and 97)

Alaska Transfer Co (Frank Suffiacool)

ALASKAN THE DAILY (Established 1898), L S Keller Publisher, J M Keller Business Manager (See p 487)

Anderson Karl, section foreman

Anderson Boyd

Anderson John F, saloon

Andrews F, carp W P & Y Route

Arctic Brotherhood, Camp Skagway No 1, A J Achison A C, W R Hillery A R

Arter Wm, car repr W P & Y Route

Ashley Howard, master mechanic W P & Y Route, mayor of Skagway

ASK CHAS W (C W Ask & Sons), Treasurer Skagway School Board

Ask Cleon J, saloon C W Ask & Sons

ASK C W & SONS (Chas W and Karl R Ask), General Merchandise (See adv)

Ask Harry, saloon C W Ask & Sons

ASK KARL R (C W Ask & Sons)

Auckerland J, lab W P & Y Route

Bajkovich Michl, lab

Baker Adelbert, clk Frye-Bruhn Co

Baker Alfred J, expmn

Baker Andw J, dairy

Baker Eihu A, meat ctr Frye-Bruhn Co

PLASTER

HARD WALL PLASTER
PLASTER OF PARIS
PLASTER BOARD
PARTITION BLOCKS

PACIFIC COAST GYPSUM CO. 503 Perkins Bldg., TACOMA See Page 13

4501-4529 9th Av S, SEATTLE Mill, First Waterway, Tacoma Mine, Gypsum, Alaska

Barnard Mary Mrs

Barnes Wm R, eng Home Power Co

Barnett Geo W, painter

Barni Saml, section hand W P & Y Route

C. W. ASK & SONS

WHOLESALE AND RETAIL GROCERS

ALL KINDS OF FRESH FRUITS
IN SEASON

Broadway, bet. Fifth and Sixth Avs.

SKAGWAY

ALASKA

Barry Edwd J, eng W P & Y Route

Batson Wm B, mgr Frye-Bruhn Co

Bearden E C, carp W P & Y Route

Beaucamp Jos, trapper

Becker Robt M, janitor Pacific Coast S S Co

Beddingfield Chas C, brtnr J F Anderson

Belmont Cherry

Bender John A, brtnr Herman Grimm, chief of fire department

ENGINEERS--CONTRACTORS--MACHINISTS

Vancouver, B. C. Northwestern Iron Works Seattle, Wn.

St. Paul & Tacoma Lumber Co.
Tacoma, Washington
LUMBER, LATH, SHINGLES, CEDAR SIDING, CREOSOTED LUMBER,
POLES, PILING, PAVING BLOCKS, ETC.

See Page 49

FALKENBURG & LAUCKS, Seattle Assaying Ore Testing

Chemical Analysis

Inspection

Customs Milling

486

(1915-16) R. L. POLK & CO.'S

SKAGWAY—Continued

B P O E Skagway Lodge No 431, Howard Ashley E R, Fred J Vande
wall sec
Berg C, lab W P & Y Route
Berg O John, lab W P & Y Route
Berry Edwd, eng W P & Y Route
Berry Jas
Billson Agnes, housekpr Pullen House
Bjorensen J, lab W P & Y Route
Black Geo, clk
Black Nels J Mrs
Black Norman E, clk
Blackwell J, lab W P & Y Route
Blanchard Alex C, chief clk auditor W P & Y Route
Blanchard Elizabeth Mrs
Blanchard Wm C, chief clk gen mgr W P & Y Route
Bledsoe Wm J, grocer, miner
Board of Trade The, saloon
BOARD OF TRADE BILLIARD PARLOR (Arthur D Boone)
Bonebrake A Crede, pharmacist Keller Bros Drug Co
Bonner John, lab W P & Y Route
BOONE ARTHUR D (Board of Trade Billiard Parlor)
Boshart Christ B, miner
Bowers Jos, longshoreman
Braich Geo, hlpr Clecak & Karaman

F. T. CROWE & CO.

BUILDING MATERIALS
CONTRACTORS SUPPLIES
CEMENT LIME PLASTER
PLASTER BOARD NEOPRENE BUILDING AND ROOFING PAPERS PAROID ROOFING
TOUCH BRO'S DAMP RESISTING PAINTS INSULATING MATERIALS

SEATTLE TACOMA PORTLAND SPOKANE

Brand Oren, section hand W P & Y Route
British Columbia Yukon Railway Co (W P & Y Route), Herbert Wheeler
gen mgr, Victor I Hahn supt
British Yukon Railway (W P & Y Route), Herbert Wheeler gen mgr,
Victor I Hahn supt
Britt Wm E, drugs
Brockmiller Chas L, condr W P & Y Route
Brockway Chas, fireman
Brophy Emil R, watchmkr and salsn H D Kirmse
Brown A, logger
Brown Chas M, lab W P & Y Route
Brown Geo, dairy
Brown R W, section hand W P & Y Route
Browning Robt, cigars and confr
Brune Minnie, housekpr White Pass Hospital
Bryant Robt, bridge carp W P & Y Route
Bunting Wm, boiler mkr W P & Y Route
Butt Lois, tchr Skagway Public School
Calhoun J, lab W P & Y Route
Canadian Customs, Lorne A McAllister officer in charge
CANADIAN PACIFIC RAILWAY CO, F Frederick W Lowie General Agent
Carlburg A, carp W P & Y Route
Carney W, lab W P & Y Route
Carson Clara E, dressmkr
Carson Geo E, city watchman
Cartright Chas

"BLACK BEAR" BRAND OVERALLS
and WORKING GARMENTS are the Best for ALASKA TRADE

ALASKA JUNK CO.

FRANK SCHWARTZ, Propr.

LARGEST WHOLESALE DEALERS IN THE NORTHWEST

1120 1st Av S.

SEE PAGE 45

SEATTLE, WN

Cha
Cha
Chil
Chri
City
City
City
City
Clar
Clar
Clay
Clec
Clec
Cler
Cog
Cog
Cok
Con
Con
Coo
Coo
Cow
Cox
CRA

SW
I
San

Cre
Cre
Cre
CRA

Cur
Cur
Cur
Dal
DAI

Dal

↑

Willamette Iron & Steel Works

PORTLAND, OREGON
 Logging, Hoisting, Mining, Marine & Steamboat Machinery
 Boilers, Tanks, Penstocks, Pipe, All kinds of Plate Work
 SEATTLE BRANCH OFFICE: 63 COLUMBIA STREET

Chamberlain Clarence A, clk Fred C Flaherty
 Chambers John J, eng Home Power Co
 Childs Wm J, brndr Albert Reinert
 Christian Science Society, meets Sundays 11:00 a m in Alaska bldg
 City Clerk, Danl W McKay
 City Marshal, Frank Page
 City Treasurer and Municipal Magistrate, Martin Conway
 City Watchman, Geo E Carson
 Clark F, lab W P & Y Route
 Clark Henry D, farmer
 Clayson Wm, Jas F Kennedy mgr, clothing
 Clecak John A (Clecak & Karaman)
 Clecak & Karaman (John A Clecak, Vlatro M Karaman), restaurant
 Clemenger Matthew B, pres Home Power Co, mgr Dewey Hotel
 Coggan Geo F, phtgr Keller Bros Drug Co
 Cogra G B, carp W P & Y Route
 Cole Cecil C, clk W P & Y Route
 Conn John I, bridge carp W P & Y Route
 Conway Martin, U S Commissioner, city treasurer and municipal mag-
 istrate
 Cook Frank R, deputy U S marshal
 Coon Chas, lab
 Cowan Dale O, wharfinger W P & Y Route
 Cox Frank, eng
CRANE E W MRS, Hostess Pullen House

**SWEATER COATS
 UNDERWEAR**

Saxony Knitting Co.

Saxony Knit

**TOQUES, ETC.
 MILLS**

160 Jackson St., SEATTLE

Crepeau Chas, bridge carp W P & Y Route
 Crepeau Louis, bridge carp W P & Y Route
 Crepeau P M, lab W P & Y Route

**CROOKALL DOCTOR ARTHUR, Rectal Diseases a Specialty, 412 Joshua
 Green Bldg, Seattle, Wash**

Curran Dennis, lab W P & Y Route
 Curran Janet, waiter Pullen House
 Curry Michl, lab

Dahl Gus, carp W P & Y Route

**DAILY ALASKAN THE (Established 1898), L S Keller Publisher, J M
 Keller Business Manager (See adv)**

Dallas R, section hand W P & Y Route

The Skagway Daily Alaskan

L. S. KELLER, Publisher

**The Oldest Daily Paper in Alaska. Published Continuously
 Daily Since February, 1898**

**Largest Guaranteed Circulation of Any Paper in the District
 SKAGWAY, ALASKA**



**J. H.
 IRVING
 CO., Inc.
 TAILORS
 IMPORTERS
 and DRAPERS
 of WOOLENS**
 Established 1890
\$35 to \$65
 211 Columbia St.
SEATTLE, WASH.
 Front & Main Sts.
JUNEAU, ALASKA

**Mining
 Machinery**

Geo. W. Evans & Co.
 3201 L. C. Smith Bldg.
 See Page 57
SEATTLE

LAW AND COLLECTIONS EVERYWHERE

We Are Specialists You Are Not

NATIONAL MERCHANTS COLLECTING CO

L. Watts, Mgr. 1234 NORTHWESTERN BANK BLDG., PORTLAND, OR

488

(1915-16) R. L. POLK & CO.'S

GOLD SHIELD COFFEE

"ALWAYS GOOD"—SOLD IN SEALED CANS ONLY

Roasted and Packed by Schwabacher Bros. & Co., Inc., SEATTLE, WASH.

SKAGWAY—Continued

Darr H W, lab W P & Y Route
 Davies Fredk G, ticket clk W P & Y Route
 Dean J, lab W P & Y Route
 Dean Wm N, wharfinger
DEDMAN GEO R (Foreman & Dedman)
 Deverell Louis, lab W P & Y Route
 Dewey Hotel, Matthew B Clemenger mgr
 Dickson Henry J, section foreman W P & Y Route
 Dillon Geo W, real est
 Dillon Mary
 Doherty P, lab W P & Y Route
 Doran Ida Mrs, housekpr Dewey Hotel
DORTERO ANTONIO, Wholesale and Retail Cigars and Tobacco, Con-
fectionery and Notions 416 Broadway
 Dortero John, janitor W P & Y
 Dortero Rosie
 Dortero Vincent
 Downey J, lab W P & Y Route
 Durkee Chas W jr, inspr U S Immigration Service
 Earle B B, clk W P & Y Route
 Eckert Fred H, driver
 Eckert John J, lab
 Ekstrom H, lab W P & Y Route

GOLDSMITH BROS. SMELTING & REFINING CO.

801-804 GREEN BLDG.

Highest Cash Price Paid for Old Gold, Silver and Platinum
Without Delay of Assay

SEATTLE, WASHINGTON

Eliason Fred, prospector
 Ender Louis, elec Home Power Co
 Ennis Chris, lab W P & Y Route
 Evans Edna G, linotype opr The Daily Alaskan
 Evans Nellie Mrs
 Eville Robt, blksmth W P & Y Route
 Faith Kittie
 Farmer Elmore, storekpr W P & Y Route
 Feero Frank N, clk Wm E Britt
 Feero Wm E, carp, fireman W P & Y Route
 Fickardt Fredk A, chief clk, supt rail div W P & Y Route
 Fiquet Cadet D, gardener
 Fisher Wm D, wharf cashr W P & Y Route
 Flaherty Harry, wharfinger
 Flint S A
 Flynn Nellie G, bkpr
 Flynn Patk J, car inspr W P & Y Route
 Flynn Wm, wiper W P & Y Route
 Foley P J, carp W P & Y Route
 Fonzo Fred

FOREMAN EDWARD (Foreman & Dedman)

MARINE SUPPLY COMPANY

WHOLESALE AND RETAIL DEALERS

Ship Chandlery, Cordage, Marine Hardware, Engineers and Cannery Supplies

PIER 2

SEATTLE, WASH.

FOR

EDW

C

SK

For

Fos

Fos

1

We

Fos

For

F C

F

Fri

Fri

Fri

Fri

Fri

Gal

KOZ A Natural Mineral Remedy for
 Stomach Trouble, Chilblains,
 Frost Bites, Catarrh
 All Drug Stores in Oregon and California
NATURA CO., San Francisco
 (See Page 65)

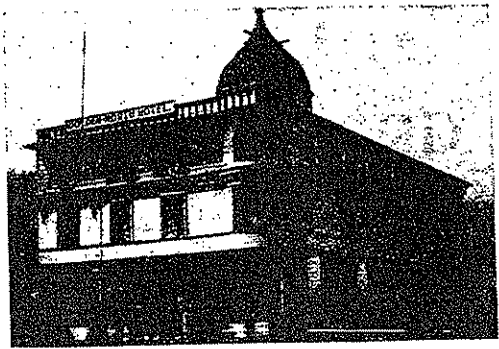
RHEUMATISM

FOREMAN & DEDMAN (Edward Foreman, Geo R Dedman), Proprs
 Golden North Hotel (See adv)

EDWARD FOREMAN

GEO. R. DEDMAN

Golden North Hotel



SKAGWAY'S BEST
 HEADQUARTERS FOR TOURISTS

The Golden North Hotel deals in accommodations
 that will please you, service that will satisfy you,
 rates that will appeal to you, and a hearty welcome
 awaits you

SKAGWAY

ALASKA

Fors Chas, bridge carp W P & Y Route
 Foster A, lab W P & Y Route
 Foster H, painter W P & Y Route



WAGONS

TEAMING, DUMP, LAUNDRY,
 EXPRESS

Western Ave. and Columbia St.

SEATTLE

Foster R B, fireman
 Fowler Frank S, depot baggageman W P & Y Route
 F O E, Skagway Aerie No 25, J C Wood W P, J W Pritchett sec
 F & A M, White Pass Lodge No 113, Elmer L Wheeler W M, Philip
 Abrahams sec
 Friedenthal Edwin, clk Keller Bros Drug Co
 Friedenthal Henry, tmstr
 Friedenthal Martha, clk Henry J Lynch
 Froeling John J, lab W P & Y Route
 Frye-Bruhn Co, W B Batson mgr, meats
 Gable Wm Gardner, phys, supt White Pass Hospital, surg White Pass
 Hospital Assn

PACIFIC ALASKA NAVIGATION CO. "THE ADMIRAL LINE"
 PUGET SOUND-ALASKA ROUTE—S. S. ADMIRAL WATSON AND ADMIRAL EVANS
 FIRST CLASS PASSENGER AND FREIGHT SERVICE
 PIER 1, SEATTLE

SMITH, DANIELS & KELLER
WHOLESALE
 Men's, Women's and Children's
 Underwear, Hosiery, Etc., Staple
 and Fancy Notions
SEATTLE

ALASKA STEAMSHIP CO.

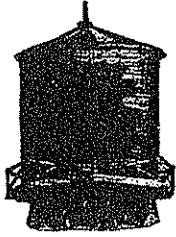
SEATTLE

BEST BOATS FINEST MEALS

OPERATES ON ALL ALASKA ROUTES

490

(1915-16) R. L. POLK & CO.'S



Tanks

For Water, Oil
Mining
Tank Towers
Cyanide Plants

PIPE

For Water Works
Irrigation
Mining
Power

National Tank & Pipe Company

Formerly P. T. & P. Co.

OFFICE

275 OAK STREET
Portland, Oregon

FACTORY

KENTON STATION



SKAGWAY—Continued
GANTY PROSPER H, Groceries and Feed (See adv)

Sole Agents Standard Oil Company—Sole Agents Hill Bros. Coffees

P. H. GANTY

Wholesale and Retail

GROCERIES, HAY AND OATS

Perishables a Specialty. Preferred Stock
Canned Goods

Broadway, bet. 4th and 5th Avs.

SKAGWAY, ALASKA

Garris Orval J, barber Edwd L Thibedeau
Gault Leland C, ticket agt W P & Y Route
Gault Roy E, eng W P & Y Route
Gibbs F, lab W P & Y Route
Gillham John W

Goding Jos A, wiper

Goding Maurice R, eng W P & Y Route

GOLDEN NORTH HOTEL, Foreman & Dedman Proprs, Skagway's Leading Hotel, American and European Plan, Headquarters for Commercial Travelers and Tourists (See p 489)

FRANKLIN TOOL WORKS

SEATTLE, WASH.

Manufacturers

Mill, Mine, Cannery and
Fishery Supplies

See Page 56

Goodenow A L, lab W P & Y Route
Gould F, lab W P & Y Route
Grant Alice L Mrs (Little River Roadhouse)
Gray D, lab W P & Y Route
Green G, lab W P & Y Route

Green Jas F, gunsmith

Greisbach John, lab W P & Y Route

Greshiel John W, tinner W P & Y Route

GRIMM HERMAN (The Pack Train Bar)

Grogan Chas, lab

Gumprecht C M, carp W P & Y Route

Gurnett Felix, carp W P & Y Route

Gutfeld Arnold

Gutfeld Louis, jeweler H D Kirmse

Gutfeld Max (The Vienna Bakery)

Gwilym J, telg opr W P & Y Route

Hagen Thos, shoemkr

HAHN VICTOR I, Superintendent Rail Division, White Pass & Yukon Route

Haines Henry H, lab W P & Y Route

Hansen A, painter W P & Y Route

Hansen C, lab W P & Y Route

Hansen John N, bridge foreman W P & Y Route

Hansen Nels P, fisherman

SEATTLE MACHINE WORKS, Inc.

Dredges and Dredging Machinery

Lander Street and East Waterway

SEATTLE, WASHINGTON

Hans
Hard
Harr.
Harr.
Hart
Hart
Hart
Hens
Hern
Herr
Hest
Hille
HILL
Hine
Hiro
Hog
Hog
Hom

Hosi
HOL

Hud
Hud
Huk

L.

WE

Hun
Ikut
Itze
Jacc
Janc

7

Wa

D. J

Jeni
Jeni
Jeni
Jon
Jon
Jon
Joh

Al

Si

Preferred Stock Groceries

Allen & Lewis, Distributors, Portland, Ore.

Hansen Saml, bksmth's hlpr W P & Y Route
 Hardy Nathan O F, sec-treas Home Power Co
 Harrison Lloyd A, dry gds
 Harrison Nora, clk
 Hart J, lab W P & Y Route
 Hart M, section foreman
 Hart P J, lab W P & Y Route
 Henson Wm H, clk
 Hern Perry M, baggageman
 Herron P, gardener
 Hestness Edwd, section foreman W P & Y Route
 Hillery Albert R, condr W P & Y Route
HILLERY WILLARD R, General Cashier White Pass & Yukon Route
 Hines Thos, longshoreman
 Hirons Thos, lab W P & Y Route
 Hogan John, section hand W P & Y Route
 Hogan Jos, lab
 Home Power Co, Matthew B Clemenger pres, Nathan O F Hardy sec-treas, Chas Nye mgr
 Hosie Davis, caretaker Pullen House
HOUSE OF RICH THE (David J Rich), Building Material, Paints, etc (See adv)
 Hudson Leon E, carp W P & Y Route
 Hudson M E
 Hukill David N, lab city street dept

L. HURWITZ & CO. Seattle, U.S.A.

General Merchandise Jobbers

WE WILL FILL YOUR ORDER FOR ANYTHING IN THE LINE OF MERCHANDISE

Huntley John, boiler mkr's hlpr W P & Y Route
 Ikuta Zenjiro, jeweler
 Itzen Martin Mrs, furn rms
 Jacobs Hattie S Mrs
 Jandos Jos J, laundry

THE HOUSE OF RICH

DEALER IN

Wall Paper, Building Paper, Paints, Oils, Glass
 Hardware and Building Material

D. J. RICH, Propr.

SKAGWAY, ALASKA

Jenkins Rose Mrs
 Jennings Geo, miner
 Jensen E, lab W P & Y Route
 Jones Danl E, longshoreman
 Jones Thos L, trainman W P & Y Route
 Johnson B, lab W P & Y Route

American Dredge Building & Construction Co.

503-4 Pioneer Bldg., Seattle, Wash., U. S. A.

Small Dredges for Alaska Trade a Specialty

Dr. J. Brown Dentist

627 First Ave.
 SEATTLE

Foot of
 Cherry St.

Best Work

Save Your Teeth

THE BREYMAN LEATHER COMPANY
LEATHER, FINDINGS, SHOE STORE SUPPLIES, SHOE
MACHINERY AND SADDLERY GOODS

329-331 EVERETT STREET

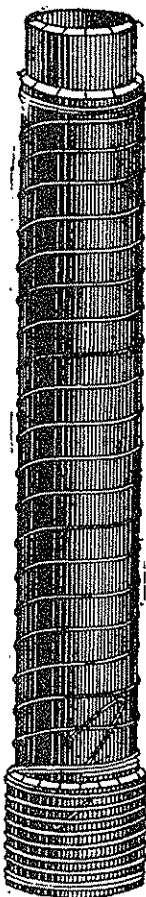
PORTLAND, OREGON

492

(1915-16) R. L. POLK & CO.'S

MANUFACTURERS

**WOODEN
 WATER
 PIPE**



Washington
 Pipe &
 Foundry Co.
 TACOMA, WASH.

SKAGWAY—Continued

Johnson Chris, lab W P & Y Route
 Johnson John, lab W P & Y Route
 Johnson Martin, janitor

LOUIS S. KELLER

JOHN M. KELLER

Keller Bros. Drug Co.
DRUGS, CONFECTIONERY AND
STATIONERY

Headquarters for Original Native Carved Totem Poles
 We Carry the Finest Line of Curios in Southeastern Alaska

SKAGWAY

ALASKA

Johnson P O, lab W P & Y Route
 Johnston Lewis H, clk Canadian Pacific Ry Co
JUNEAU STEAMSHIP CO (See pp. 94 and 322)
 Kalem Henry, plasterer W P & Y Route
 Karaman Vlatro M (Clecak & Karaman)
 Keenan Margaret, prin Skagway public school

THE A. H. AVERILL MACHINERY CO.
 PORTLAND—SPOKANE

RUSSELL **ENGINES, BOILERS**
SAW MILLS

KELLER BROS DRUG CO (Louis S and John M Keller), Drugs, Curios,
 Agents for Eastman's Kodaks and Supplies (See adv)
KELLER JOHN M (Keller Bros Drug Co), Business Manager The Daily
 Alaskan
KELLER LOUIS S, Dental Surgeon, Publisher The Daily Alaskan
KELLER MARTHA B, Society Editor The Daily Alaskan
 Kennedy Jas F, mgr Wm Clayson
 Kindell Augustus E, postmaster
 Kindell Georgia Mrs, asst postmaster
 Kinley Fredk, carp W P & Y Route
KIRMSE H D (Mrs Hazel G Kirmse), W C Wright Mgr, Jewelry, Curios,
 Etc (See adv)

H. D. KIRMSE

PIONEER JEWELER

THE BIG CURIO STORE OF ALASKA

Established 1897

Granted Two Grand Prizes and Five Gold Medals at the A.-Y.-P. Exposition
 Alaska Indian Baskets. Nugget Jewelry and Indian Curios in All Designs
 Native Hand Carved Fossil and Walrus Ivory. Mail Orders a Specialty

SKAGWAY

Catalogues on Request

ALASKA

WE DELIVER PROMPTLY
 The Goods

THE "HEAVY HARDWARE," "IRON AND STEEL MERCHANTS"
WESTERN HARDWARE & METAL CO., SEATTLE, WASH.

Bogardus Testing Laboratories

ASSAYERS AND CHEMISTS

SEATTLE

INSPECTING AND TESTING ENGINEERS

Established 1890

ALASKA GAZETTEER AND DIRECTORY (1915-16)

493

KIRMSE HAZEL G MRS (H D Kirmse)

Klatt Emil, farmer, Dyea

Krist Thos, lab W P & Y Route

La Chapelle A, lab W P & Y Route

La Chapelle Euclide, brndr

La Chapelle Hugh, longshoreman

Larsen Chris

Larsen J, lab

Larsen Lewis, carp W P & Y Route

Larson Karl A, bridge foreman W P & Y Route

Larson Louis, master mariner

Lediard Herbert J, clk W P & Y Route

Lee Cora

Lee Kate, Indy wkr

Lee Rosa

Lehman Wm, section foreman

Liddicoat Edith E, opr Alaska Telephone Co

Liddicoat Edwd J, carp

Liddicoat Louisa J

Little River Roadhouse (Mrs Alice L Grant), 40 miles n

Livermore E J, carp W P & Y Route

Logan A, lab W P & Y Route

LOWLE F FREDERICK W, General Agent Canadian Pacific Railway and Steamship Lines, Branch Agency Wells Fargo & Co Express

Lucavish Frank M, lab W P & Y Route

See Page 49

St. Paul & Tacoma Lumber Co.

TACOMA, WASHINGTON

Lynch Henry J, dry goods

McAlister Jas, clk supt W P & Y Route

McAlister Lorne A, officer in charge Canadian Customs

McAulay A, lab W P & Y Route

McBrien Alma, tel opr

McBRIEN E T, Pres-Mgr Alaska General Electric Co

McBrien Jonathan, blksmith

McBrien Walter J, elec Alaska General Electric Co

McCann Albert J, trainman W P & Y Route

McClelland Paul H M, bkpr W P & Y Route

McConnville John, lab W P & Y Route

McDermott Chas, miner

McDonald J H, lab

McDonald Thos, classifier W P & Y Route

McDougall Danl, bridge carp, W P & Y Route

McKay Danl W, clk P H Ganty, city clk

McKay Donald, clk P H Ganty

McKay Hazen, news agt

McKay Rosa

McKay Rose Mrs, nurse

McKenzie Robt D, eng W P & Y Route

McKenzie Walter C, eng W P & Y Route

McLaughlin Patk, lab W P & Y Route

McLean John, store hlpr W P & Y Route

McNichols Patk, carp W P & Y Route

McWest Mary E Mrs, housekpr



THE BORDER LINE

Southeastern
Alaska
Safety, Comfort,
Lowest Rates

S. S. ALKI

From Pier 4, For

Ketchikan,
Wrangell,
Petersburg,
Thane,
Douglas,
Treadwell,
Juneau,
Sitka.
Passengers and
Freight

S. S. DESPATCH

From Pier 4, For
Ketchikan and
West Coast Prince
of Wales Island
Points to Port
Armstrong,
Hoonah, Thane,
Douglas, Tread-
well, Juneau.
Passengers and
Freight.

S. S. NORTHLAND

For Ketchikan and
All Southeastern
Alaska Points.
Freight and
Explosives.

The Border Line Transportation Co.

Ticket Office 103
Yesler Way

Wharf Ticket
Office Pier 4
SEATTLE, WASH.

UNION CONSTRUCTION CO.

BUILDERS OF

PLACER DREDGES, UNION DRILLS, NEILL JIGS

1004 MISSION ST., SAN FRANCISCO.

CATALOGUES

John A. Roebling's Sons Co.

OF CALIFORNIA

Iron, Copper and Steel Wire of Every Description. Expand Metal Lath. Wire Nails.

900 FIRST AV. SOUTH, SEATTLE, WASH.

TEL. MAIN 4992

494

(1915-16) R. L. POLK & CO.'S

SKAGWAY—Continued

Magee Geo D Mrs
 Markle Catherine Mrs, restaurant
 Markle Wm, lab W P & Y Route
 Martin Danl L, carp
 Martin John, brtnr
 Mathews Edwd, lab W P & Y Route
 Mathews E G, asst train dispatcher W P & Y Route
 Mathews Geo, lab W P & Y Route
 Mathews Jud, lab W P & Y Route
 Matkovich Nickola, waiter
 Mayor of Skagway, Howard Ashley
 Melovich Michl, lab
 Methodist Episcopal Church (Rev Louis H Pedersen)
 Meulenberg L, carp
 Miller Essie
 Miller Geo G, dep colr in chg and inspr U S Customs
 Miller Geo Herman, general auditor W P & Y Route
 Miller John V, stngr W P & Y Route
 Milnes Louise K Mrs, tchr government school
 Moffat Agnes C, tchr Skagway Public School
 Moore Chas T
 Moore J, carp W P & Y Route
 Moore Myrtle, mgr Portland House
 Morse E, carp W P & Y Route

Multnomah Trunk & Bag Co.

Manufacturers of Trunks, Suit Cases, Telescopes, Travelling Bags
 and All Kinds of Special Work, Either Trunks or Suit Cases

82 E. WATER STREET

PORTLAND, OREGON

Motter Robt, wharf baggageman W P & Y Route
 Mowl Geo, talior and motion pictures
 Moyer Frank A, farmer
 Moyer Frank A Mrs, station housekpr W P & Y Route
 Moyer Le Roy, lab W P & Y Route
 Muir Frank H, clk
 Mulvihill Wm J, chief train dispatcher W P & Y Route
 Mulvihill W Roy, train baggageman W P & Y Route
 Municipal Magistrate and City Treasurer, Martin Conway
 Murphy J, lab
 Murray Barney, porter Board of Trade Billiard Parlor
 Myrick Wm T, carp
**NEITRO SANATORIUM, Dr. A W Neitro, Founder and Manager, A Place
 to Get Relief From Rheumatic and Nervous Diseases, 4026 Brooklyn
 Av, Seattle, Wash (See p 112)**
 Nelson A, carp W P & Y Route
 Ness Edwd, section foreman
 Nettles Jas A, hdwe
 Noren T, lab W P & Y Route
 Nussbaum John E, painter
 Nye Chas, wood dir, mgr Home Power Co
 Nystic H D Mrs, manicure
 O'Brien John, carp W P & Y Route
 Ohrner E G, pharmacist
 Olsen Clarence E, condr W P & Y Route
 Olsen Herman, miner

"Isaacson's" NON-BREAKABLE Alaska

THAWING POINTS

Seattle

Write for
Prices, Etc.

THE ONLY POINT ON THE MARKET

That Will Not Break

Hose Securely Fastened With Clamp and

Spring Washers

LINK-BELT AND DODGE PRODUCTS CO.

SEATTLE, WASH.—PORTLAND, ORE.

ELEVATING, CONVEYING, POWER TRANSMISSION

CATALOGS ON REQUEST

SEA

Olsor
Otas
P C
Pacif
Pacif
PAC
Page
Pate:
PED

P. C

PED

Pedi

G

Br

623

PEL

Pet

Pet

Pet

Pet

Phe

Phe

Phi

Piel

Pop

Por

Pos

Pra

Pra

Pre

Prit

PU

AI

HARDWOOD LUMBER

EHRlich-HARRISON COMPANY

SEATTLE

WASHINGTON

ALASKA GAZETTEER AND DIRECTORY (1915-16)

495

Olson John P, eng W P & Y Route
Otaso Michl, lab
P C Dock
Pacific Coast Steamship Co, V A Peterson agt
Pacific Arctic Railway & Navigation Co (W P & Y Route), Herbert
Wheeler gen mgr, Victor I Hahn supt
PACK TRAIN BAR THE (Herman Grimm)
Page Frank, city marshal
Paterson Mary, matron White Pass Hospital
PEDERSEN BROTHERS (Fred L and Ralph M), Alaska and Yukon
Photo Cards (See adv)

Pedersen Brothers

WHOLESALE AND RETAIL

ALASKA AND YUKON PHOTO CARDS

2,337 Subjects, Every One a Photograph

SEND ONE DOLLAR FOR TWENTY REPRESENTATIVE VIEWS

Films Developed—Supplies—Lantern Slides

P. O. BOX G

SKAGWAY, ALASKA

PEDERSEN FRED L (Pedersen Brothers)
Pedersen Louis H Rev (Methodist Episcopal Church)

Grand Prize WIRE ROPE All Grades
MILL AND CAMP SUPPLIES

Broderick & Bascom Loggers Supply Co.
623-5 WESTERN AVE. SEATTLE, WASH.

PEDERSEN RALPH M (Pedersen Bros)
Peters N H, lab W P & Y Route
Peterson Chas, cook W P & Y Route
Peterson Edwd, lab W P & Y Route
Peterson P A, carp W P & Y Route
Peterson V A, agt Pacific Coast Steamship Co
Phelps John C, lab
Phelps Markus A, condr W P & Y Route
Phillips Henry, pressman
Pickering Chas, eng W P & Y Route
Popovich Saml, lab
Portland House, Mrs Myrtle Moore mgr
Post Office, Augustus E Kindell postmaster, 5th av bet Broadway and State
Pratt Erma, stngr The Daily Alaskan
Pratt Ross C, foreman The Daily Alaskan
Prendiville Geo, condr W P & Y Route
Pritchett J W, sec Skagway Aerie No 25, F O E
PULLEN HARRIET S MRS (The Pullen House)

P
I
O
N
E
E
R

BINDERY

AND

PRINTING CO.

STATIONERS

ENGRAVERS

BLANK BOOK

MAKERS

LOOSE LEAF

LEDGERS

T
A
C
C
O
M
A

Inside Passage Excursions

ALL ALASKA STEAMSHIP COMPANY'S VESSELS

On Southwestern and Southeastern Routes Operate via Inside Passage



WILSON'S BOAT AND SHIPYARD

JOHN WILSON, Proprietor

Pleasure or Commercial Boat Building and Repairing—Dory Building for the Fishing Trade a Specialty

SEATTLE,

WASH.

496

(1915-16) R. L. POLK & CO.'S

SKAGWAY—Continued

PULLEN HOUSE THE (Mrs Harriet S Pullen) (See adv)

**T. F.
CLARK
CO. Inc.**

M. SILVER
Manager

Manufacturers

of All
Kinds of
**SHEET
METAL
WORK**

Made For
**ALASKA
SINCE**

1897

**YUKON
STOVES**

**HYDRAULIC
NOZZLES**

TANKS

GENERAL
MARINE AND
SHEET METAL
WORK DONE

602-615

Railroad Ave.
**SEATTLE,
WASH.**

THE PULLEN HOUSE

Elegantly Furnished
Rooms, Baths and
Electric Light,
Cuisine and Service
Unexcelled

The Finest House in Alaska

SKAGWAY

ALASKA

Pullen Royal R, student
Putnam Henry C, bkpr W P & Y Route
Putnam Nada A
Putnam Priscilla M
Pyke Chas E, clk W P & Y Route
Pyke Clarence E, lab W P & Y Route
Radis T, lab W P & Y Route
Radonich Nicholas, cook Clecak & Karaman

ASK YOUR DEALER FOR

Washington Shoe Mnfg. Co.'s SHOES OF QUALITY

Radovich Jos, lab W P & Y Route
Rant G, lab W P & Y Route
Rapuzzi Andw, trainman W P & Y Route
Rapuzzi Chas, boiler mkr hpr W P & Y Route
Rapuzzi Louis, lab W P & Y Route
RAPUZZI TERESA MRS (The Washington Fruit Store)
Reinert Albert, saloon and motion pictures
Remick Smith, lab W P & Y Route
Rice Danl, carp W P & Y Route
RICH DAVID J (The House of Rich) (See p 491)
Richter Emil H, jeweler and curios
Richter Herman, lodgings
Rickard Theresa E Mrs, clk L A Harrison
Roberts E F, clk W P & Y Route
Rock Jas R, jail guard
Rodgers Steven, carp W P & Y Route
Rogers Clyde H A, clk W P & Y Route
Rogers Miner E, carp
Ross Michl, lab W P & Y Route
Rousseau Albert A, driver P H Ganty
ROUSSEAU ALBERT M, Editor The Daily Alaskan
Rousseau Henrietta
Rousseau Lovell N, pressman The Daily Alaskan
Ryan Thos, longshoreman
Saake Chas A, brewer
St Marks Catholic Church (Rev Father Turnell)

WINDOWS AND DOORS

STETSON & POST LUMBER CO., SEATTLE

W
Mar
Sanc
Sanc
Sanc
Sch
Seal
Sear
Seln
Shar
SHA
She
She
Shel
Shel
Shel
Sho
Sim
Sim
Sip
Ska
Ska
Ska
SK/
Ska
Smi
I
SC
Sm
Sm
Sm
Sm
Sm
Sny
Soj
Spe
Spe
Spe
Sta
Ste
Ste
Ste
Ste
Str
Str
Su
Su
Su
Su
Su
Ta
M
Re
V

SMITH & BLOXOM

Wholesale FRUITS and VEGETABLES

Madison, nw Cor. Western Ave.

SEATTLE, WASH.

ALASKA GAZETTEER AND DIRECTORY (1915-16)

497

Sandbeck Amelia (wid Chas L)
 Sanders Frank, cook Clecak & Karaman
 Sanders R J, lab
 Schultz Fritz, lab W P & Y Route
 Seakrist Jacob, lab
 Seaman Henry F, dairy
 Selmer Oscar, barber
 Sharkness M, lab W P & Y Route
SHAW EDWD J, Agent Alaska Steamship Co
 Shearer J Herbert, fireman W P & Y Route
 Shearer Jas Wm, eng W P & Y Route
 Shelly C Eugene, condr W P & Y Route
 Shelly Robt B, trainman W P & Y Route
 Sherman J, carp W P & Y Route
 Shorthell Sarah E Mrs, dressmkr
 Simmons Gladys, nurse White Pass Hospital
 Sims Wm, porter J F Anderson
 Sippelle Guy C, mach W P & Y Route
 Skagway Fire Department, John A Bender chief
 Skagway Public School, Margaret Keenan prin
 Skagway School Board, Victor I Hahn pres, Danl W McKay sec, Chas W
 Ask treas
SKAGWAY STEAM LAUNDRY (Mrs Lena S Achison)
 Skagway Wharf (W P & Y Route), Jas Wallace agt
 Smith C, lab W P & Y Route

**LOVERA CLEAR HAVANA and LAWRENCE
 BARRETT MILD HAVANA CIGARS**

RECOMMENDED BY ALL DEALERS

SCHWABACHER BROS. & CO., Inc. SEATTLE
 DISTRIBUTORS.

Smith Eugene D, mach W P & Y Route
 Smith John, bridge carp W P & Y Route
 Smith J C, trainman W P & Y Route
 Smith M, lab W P & Y Route
 Smith Richd, carp W P & Y Route
 Snyder Winters, tmstr
 Sogura G, lab W P & Y Route
 Sparks Victor L, fireman W P & Y Route
 Sparks Winfield S, carp
 Speer Wallace L, train baggageman W P & Y Route
 Standish Thos J, storekpr W P & Y Route
 Sterling Stella
 Stevensen David L, trainman W P & Y Route
 Stevenson Wm L
 Stewart Jas L, clk W P & Y Route
 Storey Fred H, miner
 Storey Wilbur J, fireman W P & Y Route
 Streed Andw J, wharf checker W P & Y Route
 Sturgell Garland H, wood dlr
 Sturgell J J, wood ctr
 Suffacool Frank (Alaska Transfer Co)
 Sullivan Jas H, painter W P & Y Route
 Sund Herman E, elec Home Power Co
 Sundeen Matthew, master mariner
 Sundeen Matthew M, bridge carp W P & Y Route
 Talbot Clyde, lab W P & Y Route

Pacific Alaska Navigation Co. "The Admiral Line"
 PUGET SOUND-ALASKA ROUTE—S. S. ADMIRAL WATSON AND ADMIRAL EVANS
 FIRST CLASS PASSENGER AND FREIGHT SERVICE
 PIER 1, SEATTLE

Mining, Marine and Canning Machinery Manufacturers
 Repair Work of All Kinds. Cylinder Boring and Packing. Ship, Boat and Launch Repairs
 Mast and Spar Makers

Wright & Smith Machine Works, Seattle, Wn.

Our New Building is equipped with every Modern Device for Handling Orders

Western Dry Goods Co., Wholesale

SEATTLE, WASH.

498

(1915-16) R. L. POLK & CO.'S



Dr.
**Edwin J.
BROWN**
D. D. S.

Seattle's Leading
Dentist

713 First Avenue,
Union Block.

Established 25
Years; All Work
Guaranteed 15
Years.

BEWARE of imi-
tators.

My Name is not
"J" but

**EDWIN J.
BROWN**

SKAGWAY—Continued

Talbot Harold, eng W P & Y Route
Talbot Lionel, condr W P & Y Route
Tanner Fred E, salsn J M Tanner
**TANNER JOSIAS M, Hardware, Lumber, Doors and Windows, Cement,
Furniture and Sporting Goods (See adv)**

J. M. TANNER

**HARDWARE, STOVES, TIN AND GRANITE WARE, LUM-
BER, LATH AND SHINGLES, CEMENT, PAINTS, OILS AND
GLASS, PLUMBING AND PLUMBERS' SUPPLIES**

SKAGWAY, ALASKA

Tate W W, fuel
Telfer Erie, clk W P & Y Route
Thibedeau Edwd L, barber
Thibedeau Robt L, bootblk
Thomas D, carp W P & Y Route

Machinery For Power Transmission

COMPLETE 90-PAGE CATALOG ON REQUEST

PORTLAND IRON WORKS, PORTLAND, OREGON

Thomas John B, molder
Thornton Jos, whsmn
Towne Albert B, wharf foreman W P & Y Route
Toyozum Jos, cook Pullen House
Trumble S, lab W P & Y Route
Tupovich Michl, lab
Turnell Rev Father (St Marks Catholic Church)
Tyler Theo, lab Skagway Wharf W P & Y Route
Ungefroren Hugo, steward Elks Club
Unger Jos A, stngr W P & Y Route
U S Commissioner, Martin Conway
U S Court House
U S Customs, Fred J Vandewall dept colr in charge
U S District Court Division No 1, District of Alaska
U S Immigration Service, Chas W Durkee inspr
U S Jail, U S Court House
U S Marshal, Frank R Cook deputy
U S Military Telegraph and Cable System
Urban Mark, clk
Urquahart Wm J, clk W P & Y Route
Van Devyer Fred, mach W P & Y Route
Vandewall Fred J, dep colr in charge U S Customs
Van Hook Theo, asst cashr W P & Y Route
Vicinich M, lab W P & Y Route
Vico P, lab W P & Y Route



Acorn Stamp Co.

Rubber Stamps, Seals, Stencils,
Badges, Checks, Etc.

219 Columbia St.

Seattle, Wash.



LOWMAN & HANFORD CO.

Booksellers, Stationers, Printers, Engravers - - Seattle

ALASKA GAZETTEER AND DIRECTORY (1915-16)

499

Vienna Bakery The (Max Gutfeld)
 Vinengo Ranchi, lab
 Vilkov D, lab W P & Y Route
 Volke Chris, section hand W P & Y Route
 Wade Edwd I, stngr W P & Y Route
 Wagner E, lab W P & Y Route
 Walker Chas O, cbtmkr
 Wallace Jas, chief clk gen agt W P & Y Route
 Ward Jos J F
 Ward Wm M, clk
 Warden Elaine
 Warren Weldon H, customs broker W P & Y Route, agt Wells Fargo &
 Co Express
WASHINGTON FRUIT STORE THE (Mrs Teresa Rapuzzi), Groceries,
 Confectionery, Fruit, Cigars and Tobacco
 Watt Bert, lab W P & Y Route
 Watt Geo H, fireman
 Webber Fredk J, shop foreman W P & Y Route
 Webster Frank D, hostler W P & Y Route
 Webster Marguerite A Mrs
 Welker J A, lab W P & Y Route
 Wert H G
 West Britton J, clk
 Wetzler Edwd G, chief clk R M S
 Wheeler Elmer L, eng W P & Y Route

UNIVERSITY BRAND MACKINAW COATS

The Garments That Men Prefer

Made of Famous Oregon Wool Mackinaw Cloth,
 in an Extensive Line of Distinctive Patterns

MANUFACTURED BY

FLEISCHNER, MAYER & CO., Portland, Oregon

Wheeler F, mach
 Wheeler Herbert, gen mgr White Pass & Yukon Route
 White Pass Athletic Club, Wm C Blanchard pres, H C Putnam sec, W R
 Hillery treas
 White Pass Hospital, Wm G Gabie supt, Mary Paterson matron
 White Pass Hospital Assn, Howard Ashley pres, W R Hillery treas, T J
 Standish sec
 White Pass & Yukon Route, Herbert Wheeler gen mgr, Victor I Hahn
 supt
 Whitley A F, section hand W P & Y Route
 Williams J, section foreman
 Wills Walter, gardener
 Wilson Arthur T, lab
 Wilson W, lab W P & Y Route
 Wise John, brtnr The Board of Trade
 Wood John C, miner
 Woods M, lab W P & Y Route
 Wright Geo B, carp W P & Y Route
WRIGHT WM C, Mgr H D Kirmse
 Wuciniot M, lab
 Wurzbacher Frank B, gen agt White Pass & Yukon Route
 Yeoman Stanton H, clk post office
 Young Dorothy
 Yovovich L M, lab
 Yovovich R, lab
 Zinkan Gleason V, transfer Canadian Customs

Hospital

F
U
R
N
I
T
U
R
E

Aseptic
 Furniture
 Mngf. Co.

The Only Factory
 of Its Kind in the
 West

1532 1st Av. S.
 Seattle

Great Western Smelting & Refining Co.

XXX NICKEL BABBITT Seattle, Washington