

MINING MACHINERY | INGERSOLL - RAND CO.

AIR COMPRESSORS, ROCK
DRILLS

300 Colman Bldg., SEATTLE

NEW YORK

JUNEAU

Stock Carried in Seattle Warehouse

See Page 58

ALASKA GAZETTEER AND DIRECTORY (1915-16)

533

Johnson Gus, carp
Nafsted Knute, postmaster
Palmer Harry, cook
U S Military Telegraph & Cable System
TOPKUK. See Bluff.

TOYONAK. A settlement on Cook Inlet, 30 miles sw of Tyonok, 44 sw of Beluga, the nearest p o. Oil and coal deposits are found.

TRAIL LAKE. A flag station on a lake of the same name and on the Alaska Northern Ry, now under U S government control, 25 miles n of Seward, the banking point, and 2½ n of Roosevelt, its p o.

TRAMWAY BAR. A mining settlement on the Middle Fork of the Koyukuk River, 200 miles ne of Tanana, 35 ne of Bettles and 30 sw of Nolan, its nearest postoffices.

TREADWELL. Pop 1200. A p o on Douglas Island, on the south side of Gastineau Channel, 3 miles s of Juneau, the capital, and adjoining Douglas, its commercial and banking point. The famous mines and mills of the Alaska Treadwell Gold Mining Co. are located here. The milling plant connected with this mine is the largest in the world, having 940 stamps. The monthly payroll averages \$140,000. Juneau & Douglas Telephone Co. connect with these points and with Thane. Mrs. Mary A Carroll, Postmaster.

Adams H O, miner
Adams Ralph H, miner
Africh Anton, miner

The "A. T. SPATZ" CAFE The Cafe That
"Quality" Made
Alaskan Hotel Building, JUNEAU, ALASKA

ALASKA TREADWELL GOLD MINING CO, F W Bradley (San Francisco) Pres, F A Hammersmith (San Francisco) Sec-Treas, P R Bradley Gen Supt, R G Wayland Asst Supt, James Christoe Cashier

Allen O C, pipeman
Anderson Albert, miner
Anderson Alfred, miner
Anderson August, miner
Anderson C G, miner
Anderson Edwd, miner
Anderson Fredk, hoist eng
Anderson Nels, foreman Ready Bullion Mine
Anderson Roy, miner
Anderson Uno, blksmth help
Anderson Wm, miner
Apostolides Thos, miner
Arris A E, hoist eng
Asplund Ed, miner
Atckson Edwd J, refinery foreman
Babich Geo, miner
Bagley F M, cyanide man
Bairner David M, mill man
Barbeau Jos, carp
Barquist Walter, cyanide man
Barquist Wm, miner
Barra Matt, miner
Baxter S C, miner
Beals Edwd, miner

St. Paul & Tacoma Lumber Co.
Tacoma, Washington
LUMBER, LATH, SHINGLES, CEDAR SIDING, CREOSOTED LUMBER,
POLES, PILING, PAVING BLOCKS, ETC.

See Page 49

STEAM OIL Engines

FOR MARINE OR STATIONARY WORK USE KEROSENE, DISTILLATE OR FUEL OIL

Vancouver, B. C. Northwestern Iron Works Seattle, Wn.

D. A. JOHNSON HARDWOOD LUMBER AND FLOORING

Spruce, Cedar, Factory, Pattern and Boat Lumber

2430 FIRST AVE. SOUTH

SEATTLE

534

(1915-16) R. L. POLK & CO.'S

TREADWELL—Continued

Beare Geo, pipeman
 Begenisich G C, miner
 Bell R, miner
 Bellone Fred, miner
 Bennett C E, master mechanic
 Benson Monte, foreman Mexican mine
 Bergwin R C, clk
 Berthold Louis, miner
 Bertoline Lorence, miner
 Bertsch L H, boilermkr
 Boblitt A M, carp
 Boerner Herman, miner
 Bohan Frank, miner
 Bohlin Carl A, miner
 Bohrer A D, hoist eng
 Bokonich John, miner
BORDER LINE TRANSPORTATION CO (See right side lines and p 98)
 Boskovich Marko, miner
 Bozich John, carp
 Bracken Oley, lab
BRADLEY P R, Gen Supt Alaska Treadwell Gold Mining Co
 Brazovich Milo, miner
 Brenden Ernest, miner
 Brennan John T, miner

F. T. CROWE & CO.

BUILDING MATERIALS
 CONTRACTORS SUPPLIES
 CEMENT LIME PLASTER
 PLASTER BOARD NEOPENT BUILDING AND ROOFING PAPERS PAROID ROOFING
 TOCH BRO'S DAMP RESISTING PAINTS INSULATING MATERIALS

SEATTLE TACOMA PORTLAND SPOKANE

Bridgman E A, miner
 Brown Chris, millman
 Brown David, mill foreman
 Buchin John, miner
 Burke Adolph, miner
 Burke Wm, miner
 Cameron Simon, carp
 Caramonos Angelo, miner
 Carlson Algot, miner
 Carlson Henry, miner
 Carlson Matt, miner
 Carlson Victor, miner
 Carmony Thos F, mach hlpr
 Carpenter I D, carp foreman
 Carpenter Paul, carp
 Carroll Mary A Mrs, cigars, confr and postmaster
 Carter F W, mill man
 Cederlof Ernest, miner
 Chambers Jas, mill man
 Cherovich Michl, miner
 Cherovich Pavelo, miner
 Cherovich Peter, fireman
 Chillan Oscar E, hoist eng
 Chilson Jas M, miner
 Chisholm A B, miner
 Chisholm John, miner

MEASURING
"BLACK BEAR" LONG WEAR
in OVERALLS Black Manufacturing Co. SEATTLE

S. A. PERKINS & CO.

WHOLESALE JEWELRY AND NOVELTIES

SEATTLE, WASHINGTON

Explosives

Mining and Blasting Powders

LIONITE POWDER CO.

PORTLAND, OREGON

ALASKA GAZETTEER AND DIRECTORY (1915-16)

535

Christensen Wm, mill man
 Christoe A W, mill man
CHRISTOE JAMES, Cashier Alaska Treadwell Gold Mining Co and
 Notary Public
 Cobientz B C, surveyor
 Combest S B, asst cyanide foreman
 Connoly John, miner
 Conty Louis, miner
 Cook H L, clk
 Cooper W F, miner
 Cornwell Francis, molder
 Cox Geo, cyanide man
 Crispo Battisto, lab
 Crispo Matt, mill man
 Cronin Thos T J, miner
 Cross C C, elec
 Crowder Harry F, miner
 Crowe Edwd, mill man
 Cuk Milan, miner
 Cupkovich Lavo, miner
 Cvarovich Peter, miner
 Cvarovich Theo, miner
 Dabolin E, timberman
 Dahl Benj, lab
 Daniels Jas, mill foreman

SWEATERS

Saxony Knitting Co.

Saxony Knit

UNDERWEAR

SEATTLE

Daniels W H, eng
 Davidson Jas, mill man
 Davis L, lab
 Debanovich Chris, miner
 Deckas Peter, lab
 Delin Harry, clk
 De Montozon P, lab
 Denyes Edwd, mill man
 Depue O D, elec
 Dickut C S, miner
 Dorum K, mill man
 Duncan John S, timekpr
 Duncan Wm, mill man
 Dunn R J, miner
 Dutton F E, lab
 Elefterin Wm, miner
 Elsnce Peter, lab
 Enstrom Fred, mach
 Eppens Chas R, lab
 Erb B E, miner
 Erdeliji John, miner
 Erickson Chas, mill man
 Evanovich Peter, miner
 Fafoutis Geo, miner
 Fafoutis Geo jr, miner
 Fanni Efisio, miner

Ellensbourg Produce Co.
 Manufacturers of PURITY BUTTER
 SEATTLE

Fidelity Adjustment Company

Collections---Adjustments

427-28 Pioneer Bldg.

Tel. Ell. 1643

Seattle

AKOZ

A Natural Mineral Remedy for
 Stomach Trouble, Chilblains,
 Frost Bites, Catarrh
 All Drug Stores in Oregon and California
NATURA CO., San Francisco
 See Page 65

RHEUMATISM

Johnson Chas E, butcher
 Johnson Chas J, miner
 Johnson C G, carp
 Johnson C W, patternmkr
 Johnson Emanuel, miner
 Johnson Fred, miner
 Johnson Geo L, mill man
 Johnson Guy J, mine inspr
 Johnson J D, surveyor
 Johnson J F, miner
 Johnson Nels P, miner
 Johnson Peter, painter
 Jokomenich Matt, miner
 Jones Jos, asst foreman Mexican mine
 Jovanovich Milan, miner
 Juneau & Douglas Telephone Co
 Kalal J, cyanide man
 Kegel Paul, director Treadwell Club Band
 Kelly Wm J, mach
 Kelova Nicholas, miner
 Kenezovich Eli, miner
 Kern Jas P, miner
 Kerney J E, steel sharpener
 Kilburn E C, miner
 Killeen John C, hlpr



GRADING TOOLS
 PLOWS, SCRAPERS, ROAD
 DRAGS, ETC.

Western Ave. and Columbia St.

SEATTLE

Kingman W, chemist
 Kinkaid J I, fireman
 Kinzie David J, labor agt A T G M Co
 Klikovac Blazo, miner
 Kojundrija Robt, miner
 Kolovich John, miner
 Kovacevich Acim, miner
 Kovach Jovan, miner
 Kovach Saml, miner
 Krippaecher Wm A, eng
 Kristovich Jos, steel sharpener
 Kruzich Lawrence, miner
 Kubin V J, mach
 Lagergren Alfred, carp
 Laggett David, mill man
 Landsburg David E, mine supt
 Lang Edwd, blksmth hlpr
 Larsen E, molder
 Leaming Benj F, mgr Treadwell Club
 Lee Arnt, miner
 Lendroth Fritz, miner
 Le Noir Frank, cyanide man
 Lien Nels, lab
 Limber Vasil, miner
 Livie Geo, hoist eng
 Lucich Saml, miner

PACIFIC ALASKA NAVIGATION CO. "THE ADMIRAL LINE"
 PUGET SOUND-ALASKA ROUTE—S. S. ADMIRAL WATSON AND ADMIRAL EVANS
 FIRST CLASS PASSENGER AND FREIGHT SERVICE
 PIER 1, SEATTLE

SMITH, DANIELS & KELLER

WHOLESALE

Men's, Women's and Children's
 Underwear, Hosiery, Etc., Staple
 and Fancy Notions
 SEATTLE

THE LUTKE MANUFACTURING COMPANY
 PORTLAND Manufacturers of OREGON
SHOW CASES, BANK AND STORE FIXTURES
 Branch Grand Rapids Show Case Co.

538

(1915-16) R. L. POLK & CO.'S

TREADWELL—Continued

Copper Block Hotel

H. F. Suesdorf, Mngr.
 Steam Heat, Electric
 Light, Hot Baths

Headquarters for Mining
 and Traveling Men
VALDEZ, ALASKA

Lumovich Radas, lab
 Lundell Gustav, pump man
 McBride H, eng
 McDonald Wm A, mill man
 McEwen Hugh, crusherman
 McKenzie S B, carp
 McKinnon Chester G, bkpr
 McKlem Robt, miner
 Mackie W A, blksmth hlpr
 Makovich Matt, miner
 Mancich Michl, miner
 Marrotti John, miner
 Matuszuneski Steve, miner
 Mauseth W P, bkpr
 Mazzeo Michl, miner
 Metzner W H, cyanide man
 Mickelson H, miner
 Mill A H, clk
 Miller Jos, mill man
 Miller J D, carp
 Mills John, mill man
 Mjaaseth H, miner
 Moberg J W, tram eng
 Moody Geo, mill man

**FRANKLIN
 TOOL WORKS**
 SEATTLE, WASH.

Manufacturers
 Mill, Mine, Cannery and
 Fishery Supplies
 See Page 56

Morgan Alex, mill man
 Mugford Edwd, mill man
 Murisich Gus, miner
 Murphy Andw, shop foreman
 Murphy Dennis, watchman
 Murphy Frank, miner
 Nelson Ernest, miner
 Nelson Nels P, miner
 Newman Wort, elec
 Nickelson A, miner
 Nikolich Luka, miner
 Nikolich Wm, miner
 Nordin S, mill man
 Odalovich Spiro, miner
 Olson Anton, miner
 Olson John, miner
 Olson Nils, fireman
 O'Neil Edwd, miner
 Osterberg Chas P, mill man
 Otterstad Ole, miner
 Otterstad Oscar, miner
 Parapid Stanko, miner
 Paul Eli, lab
 Paul Michl, trainman
 Pearce Frank H, mach
 Pederson Christian, mill man

Contractors Equipment Co.
 PORTLAND SEATTLE

ARONSON'S JEWELERS AND SILVERSMITHS WASHINGTON AND BROADWAY, PORTLAND, ORE.

ALASKA GAZETTEER AND DIRECTORY (1915-16)

539

Pekovich Saml, miner
Pelosia Jos, steel sharpener
Penny Arthur, miner
Perich John, miner
Perkovich Matt, miner
Peters John, mill man
Peterson Andw, miner
Peterson John E, miner
Peterson John O, miner
Peterson Nils, miner
Pinger H A, store mgr A T G M Co
Popovich Thos, miner
Post Office, Mary A Carroll postmaster
Powell John, blksmth
Preston C M, chief elec A T G M Co
Price Chas D, tinner
Price Henry A, mill man
Radovich John B, lab
Radovich Mitar, miner
Rakich Thos, miner
Ramsey Jas F, miner
Rapp Albert, mill man
Redmond H J, cyanide man
Richards John C, supt A J Mine
Richardson S W, assayer

LOCOMOTIVES CARS TRACTORS SCRAPING MACHINERY
Railway Mining and Contractors' Supplies and Repairs

Machinists **NISQUALY-RUSSELL CAR & LOCOMOTIVE WORKS** Boilermakers
Blacksmiths Car Builders
TACOMA

Riddle Thos, blksmth
Ringdale Peter, miner
Robertson Wm, mill man
Roddy Claud, miner
Rodenkirch T G, miner
Roeland Oscar, miner
Rogers August, miner
Rosenberg Wm, clk
Running Andw, mill man
Running Edwd, lab
Running John, mill man
Russell Forest, hoist man
Russell Frank, steel sharpener
Sabolick Geo, miner
Sakes F, carp
Sanford T W, track man
Sausany Jos, crusherman
Searing O P, mill man
Sepich Victor, miner
Sepich Wenko, miner
Seymore Hugh, miner
Shellenberg T E, miner
Shepard John, miner
Shepard J F, miner
Shotts C L, bkpr
Shudshift A, lab

Sour- doughs

Call on

Me

The Right Dr. Brown The Dentist

DR. J. BROWN

627 First Ave.

SEATTLE

Portland Open-Air Sanatorium, Portland, Ore.

For the treatment of diseases of the lungs. Address all communications to the Medical Directors, Drs. B. C. & E. W. Matson, 1021 Corbett Bldg., Portland, Ore. Write for illustrated booklet. See full page advertisement elsewhere in this directory.

Furniture Packed and Shipped

C. O. PICK Transfer and Storage Co.

PORTLAND

OREGON

540

(1915-16) R. L. POLK & CO.'S

**Alaska
Steamship
Company**

OPERATES
ON ALL

**Alaska
Routes**

ALL

**Alaska
Steamship
Co.'s**

Vessels on South-
western and
Southeastern
Routes Operate
via Inside Passage.

**ALASKA
STEAMSHIP
CO.**

SEATTLE, WN.

TREADWELL—Continued

Shudshift Saml, janitor
Simon Toney, lab
Skenas Jas, cyanide man
Smith A K, mill foreman
Smith Geo R, eng
Smith Mark, foundry foreman
Sogge Michl, lab
Spain W E, cyanide man
Spencer Herbert, clk
Sport Frank, miner
Spuhler Benj, miner
Staltman Benj, miner
Stanfield J H, mill man
Stankovich Rade, miner
Stephens Geo, mill man
Stephens Walter, foreman Treadwell mine
Steve Nicholas, miner
Stevens Robt, miner
Stevenson Harry, mill man
Stoody Jas N, mill foreman
Stragier Henry, miner
Strandberg A M, mill man
Stroup Jos, mill man
Stuen Saml, janitor



WHITE RUBBER New Pressure Process
BOOTS and PACS
Made Especially for Alaska Trade

U. S. Rubber Co. of California, SEATTLE

Summers F F, bkpr
Swarva Geo L, cyanide man
Tatom Fred, miner
Thomas Louis M, miner
Treadwell Club Band, Paul Kegel director
Trebovich Danl, miner
Tweitson Andw, carp
Udovich Frank, miner
Van Presley B, miner
Vansteenkist Henry, miner
Varge Adam, miner
Vogt Henry, carp
Wasdahl Ainer, mill man
WAYLAND R G, Asst Supt Alaska Treadwell Gold Mining Co
Wernecke L, draftsman
Westerdahl Thos, miner
Wilson John, fire chief
Wolf C, lab
Wolf L, lab
Wood Harry, cyanide man
Worth Geo, butcher
Young Erick, miner
Youngstrom Emil, eng

TUNNELL—A flag station on the W P & Y Route, 17 miles n of Skagway, the nearest banking point and p o

Mining and Mill Supplies

Western Hardware & Metal Co., Seattle, Wash.

Bogardus Testing Laboratories

ASSAYERS AND CHEMISTS

SEATTLE

INSPECTING AND TESTING ENGINEERS

Established 1890

ALASKA GAZETTEER AND DIRECTORY (1915-16)

541

TUNNEL SIDING. A flag station on the Alaska Northern Ry, now under U S government control, 52 miles n of Seward, the nearest banking point, and 20 s of Hope, its nearest p o.

TUNUNAK. A native village on Cape Vancouver on the west coast of Nelson Island, in the Bering Sea, 230 miles sw of St Michael, the nearest banking point and po.

TUXCAW. A settlement on the west coast of Prince of Wales Island. Klawock is the nearest p o, which see for names.

TWENTY MILE RIVER. A flag station on a river of the same name on Turnagain Arm of Cook Inlet and on the Alaska Northern Ry, 65 miles n of Seward, the nearest banking point, and 7 s of Hope, its nearest p o.

TYEE. A p o, first settled in 1906, on Murder Cove, on the south end of Admiralty Island, at the intersection of Chatham Strait and Frederick Sound, 90 miles s of Juneau, the capital, 70 w of Petersburg, the banking point, and 15 s of Killisnoo.

HAGER HEMO, Supt Vendsyssel Packing Co and Postmaster Vendsyssel Packing Co, Hemo Hager supt, salmon packers, cold storage and gen mdse

TYONOK. Pop 60. A settlement and discontinued p o on Cook Inlet, 120 miles n of Seldovia, 400 w of Valdez, 250 nw of Seward, the banking point, and 15 sw of Beluga, the nearest p o. Alaska Commercial Co, Durell Finch agt, gen mdse Alaska Packers' Assn Finch Durell, agt Alaska Commercial Co Robinson Chas M, justice of the peace

See Page 49

St. Paul & Tacoma Lumber Co.

TACOMA, WASHINGTON

TZAHARAGAMUT. A native settlement on Kuskokwim Bay, 140 miles w of Nushagak, the nearest p o.

UDAKATA. A discontinued p o on Dutch Harbor, Unalaska Island, 1200 miles sw of Valdez, the banking point. Unalaska is the p o, which see for names.

UGAGUK. A cannery and native settlement, 700 miles se of Nome, the nearest banking point, 45 e of Nushagak, the shipping point, and 35 s of Naknek, the nearest p o.

Alaska Packers' Assn, salmon cannery North Alaska Salmon Co, salmon cannery

UGASHIK. A cannery and native settlement on Bristol Bay, 100 miles se of Nushagak, the shipping point, and 75 s of Naknek, the nearest p o.

Red Salmon Packing Co, salmon cannery

UKAK. A native settlement on Illiok Lake, on the mail route from Karluk to Nushagak, 80 miles nw of the former. Naknek is the nearest p o, which see.

UNALAKLEET. Pop 400. A p o and village on the Unalakleet River, first settled in 1887, 63 miles ne of St Michael, the nearest shipping point, and 150 by water, 207 by trail se of Nome, the nearest banking point. Contains a Congregational church and a government reindeer station and school for natives. Communication by boat with St Michael once a week during summer months. Wells Fargo & Co Express. Chas L Steinhouser P M. Anaruk S, tchr government school



THE BORDER LINE

Southeastern
Alaska
Safety, Comfort,
Lowest Rates

S. S. ALKI

From Pier 4, For

Ketchikan,
Wrangell,
Petersburg,
Thane,
Douglas,
Treadwell,
Juneau,
Sitka.
Passengers and
Freight

S. S. DESPATCH

From Pier 4, For
Ketchikan and
West Coast Prince
of Wales Island
Points to Fort
Armstrong,
Hoonah, Thane,
Douglas, Tread-
well, Juneau.
Passengers and
Freight.

S. S. NORTHLAND

For Ketchikan and
All Southeastern
Alaska Points.
Freight and
Explosives.

The Border Line Transportation Co.

Ticket Office 103
Yesler Way
Wharf Ticket
Office Pier 4
SEATTLE, WASH.

UNION CONSTRUCTION CO.

BUILDERS OF

PLAGER DREDGES, UNION DRILLS, NEILL JIGS

604 MISSION ST.. SAN FRANCISCO. CATALOGUES

John A. Roebling's Sons Co.

OF CALIFORNIA

WIRE ROPE AND WIRE ROPE FITTINGS

900 FIRST AV. SOUTH

SEATTLE, WASH.

TEL. MAIN 4992

542

(1915-16) R. L. POLK & CO.'S

UNALAKLEET—Continued

Bahr O, reindeer owner
 Bals Nils, reindeer tndr
 Bals Peter, reindeer owner
 Bonanza Creek Roadhouse, Skaktolik, Bonanza Creek
 Boyne C P, reindeer owner
 Bradley E C, trapper
 Buck R A, mail carrier
 Carlson Anna E, matron government school
 Dwyer W (Dwyer & Steinhouer)
 Dwyer & Steinhouer (Chas L Steinhouer, W Dwyer), gen mdse
 Gustafson H Rev, missionary
 Ivanoff M, tchr government school
 Ivanoff Stevan, roadhouse, Skaktolik, Bonanza Creek
 Johnson Eric, mail contr
 Klemetson Nils, reindeer owner
 Michaels Harry, hotel
 Northern Light The (weekly), E E Van Ness publ
 Paneok Aron, asst postmaster
 Powers Thos A, roadhouse
STEINHOUSER CHAS L (Dwyer & Steinhouer), Postmaster
 Stenfield O, reindeer owner
 Swanson Fred, gen mdse and hotel
 Treanoff S T, reindeer owner
 Van Ness E E, tchr government school, publ The Northern Light

BONDS, WARRANTS, MORTGAGES AND BANK STOCKS SAFE DEPOSIT BOXES FOR RENT **WM. D. PERKINS & CO., BANKERS** SEATTLE, WASHINGTON

West W S, reindeer owner
UNALASKA. Pop 270. A p o and village, also known as Illuiluk, on Unalaska Island and Unalaska Bay, an arm of the Bering Sea, 800 miles sw of Seward, the nearest banking point. Has a public school and Greek Catholic and Methodist Episcopal churches. The Jesse Lee Home, a charitable institution for the care of native orphan children, is located here. It is a coaling station and headquarters for the whalers of the Bering Sea. Some gold is found in the vicinity. Steamers from Alaskan and States points stop here. U S Naval Radio Station. Wells Fargo & Co Express. Mail monthly from Seward. Louis Strauss P M.
 Alaska Commercial Co, Louis Strauss agt, gen mdse
 Applegate S, capt S S Everett Hayes
 Bolsharin Nicholas E, U S Commissioner and deputy colr U S Customs
 Bristol Bay Packing Co, salmon cannery, Quichag
 Buckley Alice E Mrs, matron U S jail
 Buckley P, dep U S marshal
 Cook Clara C, tchr
 Greek Catholic Church
 Ittner E, agt North American Commercial Co
 Kashevaroff P P, clk, leader Unalaska Brass Band
 Lavigne L A, jailor U S jail
 Lee Jesse Home, A W Newhall supt
 Methodist Episcopal Church (Rev A W Newhall)
 Newhall A W Rev (Methodist Episcopal Church), phys and supt Jesse Lee Home
 Newman A R, billiards

"Isaacson's" NON-BREAKABLE Alaska

THAWING POINTS

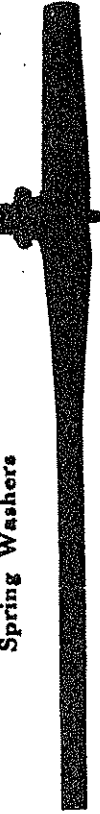
Seattle

Write for
Prices, Etc.

THE ONLY POINT ON THE MARKET

That Will Not Break

Hose Securely Fastened With Clamp and Spring Washers



LINK-BELT AND DODGE PRODUCTS CO.

SEATTLE, WASH.—PORTLAND, ORE.

ELEVATING, CONVEYING, POWER TRANSMISSION

CATALOGS ON REQUEST

E
N
P
S
S
U
W
B
S
fr
P
A
A
B
C
C
E
I
6
E
C
C
E
F
F
I
I
S
U
V
I
I
I
I

OAK, HICKORY AND OTHER HARDWOODS

EHRlich-HARRISON CO.

SEATTLE

ALASKA GAZETTEER AND DIRECTORY (1915-16)

543

Northern Commercial Co, E Ittner agt, gen mdse

Peters John, jailor U S jail

Sheehan Wm, billiards

STRAUSS LOUIS, Agt Alaska Commercial Co and Postmaster

Supeman E, tchr

Unalaska Brass Band, P P Kashevaroff leader

U S Naval Radio Station

Wells Fargo & Co Express

Wilson W A, tchr

UNANGASHIK. A settlement on the Alaska Peninsula and Bristol Bay, 120 miles ne of Sand Point, the nearest p o.

UNGA. A p o on an island of the same name, 850 miles sw of Seward, the nearest banking point, and 10 s of Sand Point. Mail steamer from Seward and intermediate point, leaves Seward the 15th of each month, connection made at Seward with steamer to southeastern Alaska ports and Seattle. Principal industry is cod fishing.

Alaska Corfish Co

ALASKA STEAMSHIP CO (See left top, left side and right bottom lines and pp 96 and 97)

Appalo Mining Co, B Brown supt

Bales L L, guide

Brown B, supt Appalo Mining Co

Casler S O, deputy U S marshal

Cunningham Geo B, gen mdse and fur trader

Driffield Fred C, U S Commissioner and recorder, postmaster

**Grand Prize WIRE ROPE All Grades
MILL AND CAMP SUPPLIES**

Broderick & Bascom Loggers Supply Co.
623-5 WESTERN AVE. SEATTLE, WASH.

Fratus J P, jailor U S jail

Gardner John, fox breeder

Gardner Wm, fox breeder

Grasvold Andw, gen mdse

Hubley H, codfish plant

Hubley Isaac

Komedal A, hotel, gen mdse, codfish plant, fur trader

Kuskokwim Commercial Co, gen mdse and fur traders, False Pass

Lacrone Dora, sch tchr

Larson Peter, furrier, hunter and guide

Spence Ruth, sch tchr

Union Fish Co

U S Marshal, S O Casler

Vincent Manuel Capt, fox breeder

Wilson Ed, gen mdse

UTKIAVIK. See Barrow.

UYAK. A p o on Kadiak Island, 800 miles w of Sitka and 50 w of Kodiak. Mail semi-monthly.

Alaska Packers' Assn, Alitak

NICHOLS J R, Postmaster

Northwestern Fisheries Co, salmon cannery

P
I
O
N
E
E
R

BINDERY

AND

PRINTING CO.

STATIONERS

ENGRAVERS

BLANK BOOK

MAKERS

LOOSE LEAF

LEDGERS

T
A
C
C
O
M
A

\$66.00 ROUND TRIP for ALASKA

EXCURSION, INCLUDING BERTH AND MEALS, ON BEST BOATS

ALASKA STEAMSHIP COMPANY

ALASKA

THE GREAT COUNTRY

Now penetrated by a modern, standard gauge, splendidly built and equipped railroad, opening up a vast mineralized area. Cordova, Lake McKinley, Chitina, Kennecott and tributary territory offer a fair field for

Prospectors

for copper or gold quartz. Now is the time to go into the country via the

Copper River & Northwestern Ry.

If interested write for folders and maps. Ask any railroad agent or write to Industrial Department.

Alaska Steamship Co.

SEATTLE

"MR. NORTHERNER" ABOUT A HOME ON THE OUTSIDE
 Read my ad. in Classified Real Estate
F. E. OLLINGER CO., Seattle, Washington

VALDEZ

Pop 1,000. An incorporated city at the head of Prince William Sound, 320 miles due w (air line) of Skagway and 1,070 nw of Seattle, Wash. The discovery of a large number of free-milling gold quartz veins in the immediate vicinity of the town, and throughout a highly mineralized zone extending east and west from that point for a distance yet undetermined, has led to a large influx of mining men and prospectors from the States to Valdez. A large amount of development has been done on a number of the properties between Shoup Bay on the west of the town to Beaver Dam on the east, with exceptionally favorable results, and ore bodies running as high as \$10,000 to the ton have been uncovered. Local capital to the amount of \$300,000 has been invested in these mines and this amount has been largely augmented by investments made by mining men from the States who have been induced to invest by the extremely rich showings made. Plans are being matured for the installation of stamp mills on several of the properties and two customs mills will be erected for handling the ores of the district. Valdez has a magnificent land-locked harbor, which is open the entire year. Has two banks, express office (Wells Fargo Express Co), telephone system, electric lights, Congregational, Episcopal and Catholic churches, graded schools, a good hotel, numerous lodging houses, daily and 2 weekly newspapers, a saw mill, a planing mill, iron works and sheet metal works. It is the headquarters of the district

**LOVERA CLEAR HAVANA and LAWRENCE
 BARRETT MILD HAVANA CIGARS**

RECOMMENDED BY ALL DEALERS

SCHWABACHER BROS. & CO., Inc. SEATTLE
 DISTRIBUTORS.

court for the third division and is the official residence of the officer in charge of the U S Military Telegraph and Cable System, which extends from Seattle to Valdez and from Valdez to Fairbanks and Nome. It is the headquarters of the Alaska Road Commission. It is the supply point for the Prince William Sound copper district, the copper and gold mines of the interior country. Gold shipments from this point are increasing annually. Valdez is reached in five days from Seattle and has a steamship service of seven steamers a month. Weekly launch to the Port Wells district. Jesse D Jefferson P M.

City Officials

- Mayor—Frank M Boyle
- Clerk and Municipal Magistrate—J W Frame
- Attorney—C F Ganty
- Treasurer—E G Ames
- Marshal and Health Officer—Willard Scott
- Fire Chief—Wm M Finical
- Councilmen—Frank M Boyle, Wm M Finical, Andreas von Gunther, Ross Hickey, Horace P King, Wm Thomas, Edwd Wood

Alphabetical List of Names

- Abrahamson Abraham, miner
- Alameda House (R Johnson), lodgings
- Alaska Dental Assn, Dr Chas T Daggett (Seward) pres, Dr E Frank German v-pres, Dr Henry Cockerille sec, Dr Herman Behla (Iditarod) trustee
- Alaska Emporium (Adam Swan), dry gds and notions

Mining, Marine and Canning Machinery Manufacturers
 Repair Work of All Kinds. Cylinder Boring and Packing. Ship, Boat and Launch Repairs
 Mast and Spar Makers

Wright & Smith Machine Works, Seattle, Wn.

Pacific Alaska Navigation Co. "The Admiral Line"
 PUGET SOUND-ALASKA ROUTE—S. S. ADMIRAL WATSON AND ADMIRAL EVANS
 FIRST CLASS PASSENGER AND FREIGHT SERVICE
 PIER 1, SEATTLE

LOWMAN & HANFORD CO.

Office Furniture, Engineering Supplies - - Seattle

ALASKA GAZETTEER AND DIRECTORY (1915-16)

547

Augermeyer Geo
ath Austin Anna Mrs, lodgings
Austin Edwin, mining
Austin J R, miner
Austin W E, miner
Baily W H, miner
Bainbridge Mining Co, Chas G Ganty sec
Baker Geo C, miner
Banzer L E, miner
Barber Guy B, cook
Barrack Geo, miner
Barrett Anna S (wid J J)
Barrett A L, miner
Barrett John, ins
Barrett S A, miner
Baxter Jos
Bean Francis M, lineman
Beane Homer L, bkpr Copper River Lbr Co
Beasley Thos, miner
Beethes Jas, launch owner
Bell Ambrose, tmstr
Bell Jos H, clk
Bence John F, miner
Bennett David, miner
Berg Fred, miner and prospector

COAST CULVERT & FLUME CO.

PORTLAND (KENTON STATION) OREGON

Corrugated Culverts, Smooth Pipe, Irrigation and Power Flumes, Tanks

Berklund Andw, miner
Big Four Mining Co, John Cook mgr
Biggs John H (Valdez Drug Co)
Birch Guy, miner
Bischoff J A, miner
LS Bishop John, tmstr Edwd Wood
Black Diamond Gold Mining Co, Harry T Whitley pres
Blackney Thos W, miner
Blackwell Wm H Mrs, lodgings
Blanchett C L, opr U S signal corps
side Blomquist Chas, driver Independent Laundry
Blum Meyer, v-pres First Bank of Valdez, sec-treas S Blum & Co Inc
sec Blum Sam, pres First Bank of Valdez and S Blum & Co Inc
Blum S & Co, Saml Blum pres, Ernest B Wheat v-pres, Meyer Blum
sec-treas, gen mdse
Board Mrs, dyer and cleaner
Borg John, cook Alaska Road Comn
Borgen Ole, mgr Frye-Bruhn Co
Borges John A, clk Alaska Road Comn
Borud John, miner
Bourke Jos O, mining
Bouse Mrs
BOUSE JOHN H D, Chief Deputy U S Marshal
Boyle Arthur R jr, pharmacist Frank M Boyle
Boyle Frank M, drugs and phys, mayor of Valdez
Boyle Nellie Mrs, waiter

Hahlo's Furs Known from Coast to Coast
MANUFACTURED BY
W. H. HAHLO & CO., 1510 2nd. Av., SEATTLE

Great Western Smelting & Refining Co.

Solder, Babbitt, Type Metal of all kinds Seattle, Wash.

Ameron Sinking and Station Pumps

FOR STEAM OR AIR DRIVE

A. S. CAMERON STEAM PUMP WORKS

300 Colman Bldg. SEATTLE

See Page 58

NEW YORK

JUNEAU

ALASKA GAZETTEER AND DIRECTORY (1915-16)

549

Church of the Epiphany (Episcopal) (Rev Edwd H Molony)
 Clark J D, clk S Blum & Co
 Clark Vaughn H, clk
 Clarkson John, miner
 Clerk Alfred, miner
 Cliff Mining Co, H E Ellis rep
 Clowry Mildred, nurse Valdez Hospital
 Cockerille Henry, dentist, sec Alaska Dental Assn
 Cockrell Francis M, mining
 Coles Alice I, clk P O
 Collins Millard F, miner
 Colvin L D, supt Sealey-Davis Mining Co
 Commins R N, opr U S Signal Corps
 Commoner The (weekly), J W Frame publ
 Congregational Church (Rev John F Dunston)
 Conley Wm M, miner
 Conrad H M, miner
 Conway W C, porter
 DCook John, mgr Big Four Mining Co
 Cook Palmer J, mine foreman Granby Mines
 Cook Sarah A Mrs
COPPER BLOCK HOTEL (The House of Comfort), Henry F Suesdorf
 Mgr, Broadway and McKinley Sts (See left side lines and p 546)
 Copper River Draying Co (Edwd Wood)
 Copper River Lumber Co, Wm M Finical pres-mgr

PLASTER

HARD WALL PLASTER
 PLASTER OF PARIS
 PLASTER BOARD
 PARTITION BLOCKS

PACIFIC COAST GYPSUM CO. 503 Perkins Bldg., TACOMA See Page 13

4501-4529 9th Av. S. SEATTLE Mill First Waterway, Tacoma Mac Gypsum Alaska

Coverneu C W, lab
 Craig J S, bkpr Granby Mines
 Crapits Robt, carp
 Crawford Chas R, bldg material
 Crawford Dawson J, mach
 Crawford Jesse A, carp
 Crawford John D, carp
 Crawford Wm H, carp
 Cristo Geo, miner
 Crittenden J R, guard U S jail
CROOKALL DOCTOR ARTHUR, Rectal Diseases a Specialty, 412
 Joshua Green Bldg, Seattle, Wash
 Cuddy Warren, with Valdez Mercantile Co
 Cunard Louis, miner
 Cusick Jas, miner
 Dalton Ernest C (Valdez Hospital), phys
 Daniels Ignatius V, clk Love-Whitley Co
 Daniels T M Mrs, lodgings
 Date J W, washer Independent Laundry
 Date Tod, piledriver fireman
 Dates May Mrs
 Davis Anna S Mrs, laundry
 Davis Emil, mining
 Davis Esther P Mrs, housekpr Copper Block Hotel
 Davis Frank G, prin Valdez Public Schools
 Davis Jas M, mining

St. Paul & Tacoma Lumber Co.
 Tacoma, Washington
 LUMBER, LATH, SHINGLES, CEDAR SIDING, CREOSOTED LUMBER,
 POLES, PILING PAVING BLOCKS, ETC.

See Page 49

ENGINEERS--CONTRACTORS--MACHINISTS

Vancouver, B. C. Northwestern Iron Works Seattle, Wn.

Willamette Iron & Steel Works

PORTLAND, OREGON

Logging, Hoisting, Mining, Marine & Steamboat Machinery
Boilers, Tanks, Penstocks, Pipe, All kinds of Plate Work
SEATTLE BRANCH OFFICE: 63 COLUMBIA STREET

ALASKA GAZETTEER AND DIRECTORY (1915-16)

551

Esson Chas A, assayer Granite Mine
Everyman's Club, reading room
Falk L Elva, waiter A M Marovich
Falk N Ethel, waiter A M Marovich
Farley Edwd S, clk Rudolph Schmidt
Farmer J, prospector
Faust Max H, master signal elec U S A Signal Corps
Fels Hugo, carp
Ferguson Robt P (Dougherty & Ferguson)
Fidalgo Alaska Copper Co, Thos J Donohoe pres
Finical Wm M, pres-mgr Copper River Lumber Co, councilman and chief
Valdez Fire Department
Finical Wm M Mrs, sec Valdez Hydraulic Gold Mining Co
**FIRST BANK OF VALDEZ, Sam Blum Pres, Meyer Blum Vice-Pres, W M
Goodwin Cashier**
Fischer Chas, baker
Fish Jas, ins agt, sec Valdez Commercial Assn
Fish Verna C, stngr
Fitzgerald Harry, miner
Florence Albert L, janitor U S Court House
Florence Albert L Mrs, lodgings
Fogg Blanche I, tel opr Alaska Water, Light & Telephone Co
Fogg Ida M (wid Fred)
Fogg Wm L, tmstr
Frame John W, publ'r The Commoner, city clerk and municipal magistrate

**SWEATER COATS
UNDERWEAR**

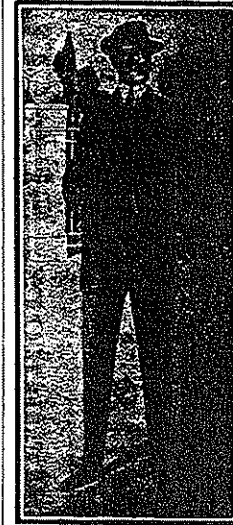
Saxony Knitting Co.

Saxony Knitting

**TOQUES, ETC.
MILLS**

160 Jackson St., SEATTLE

Francis Geo, tmstr
Fraser Jas, miner
Fraser W S, miner
F & A M, Valdez Lodge, No 168, A E Grigsby W M, Ed Wood Sec
Frye-Bruhn A, O A Borgen mgr, meats
Galena Bay Mining Co, Alfred Berg (Chicago) sec
Ganty Chas G, lawyer, city attorney, sec-treas Ellis Imperial Mining Co
Garver J B, miner
Gauthier B, miner
Gavigan John T, miner
Gelineau Jos R (Pinzon Cigar Co)
Gelineau Wm Z, barber
Georgie Minnie Mrs, mangler Independent Laundry
Geraghty Thos P, dep chf clk U S Dist Court
German E Frank, dentist, v-pres Alaska Dental Assn
Gibbreath Martha Mrs
Giles John, carp
Gilmour Jas, miner
Gilson John W, asst cashr First Bank of Valdez
Gleason Sarah E (wid Michl D), milliner
Gold Creek Hydraulic & Dredging Mines Co, H E Ellis pres, C G Ganty
sec
Golden Clarence H (Hepfinger & Golden)
Golden John H, shoemkr
Goodner M O, miner
Goodwin Woodbury M, cashr First Bank of Valdez



J. H.

IRVING

CO., Inc.

TAILORS

**IMPORTERS
and DRAPERS
of WOOLENS**

Established 1890

\$35 to \$65

211 Columbia St.
SEATTLE, WASH.

Front & Main Sts
JUNEAU, ALASKA

RAILWAY Geo. W. Evans & Co.

3201 L. C. Smith Bldg.

SUPPLIES

See Page 57

SEATTLE

LAW AND COLLECTIONS EVERYWHERE
 We Are Specialists You Are Not
NATIONAL MERCHANTS COLLECTING CO.
 L. Watts, Mgr. 1234 NORTHWESTERN BANK BLDG., PORTLAND, OR.

552

(1915-16) R. L. POLK & CO.'S

**LOVERA Clear Havana & LAWRENCE
 BARRETT Mild Havana Cigars**

Schwabacher Bros. & Co., Inc., Distributors, SEATTLE
RECOMMENDED BY ALL DEALERS

VALDEZ—Continued

Gott Chas H, brtnr Alaska Liquor & Trading Co
 Graham Lafayette, eng Valdez Fire Department
 Granby Consolidated Mining, Smelting & Power Co, Geo H Smith supt,
 5 miles e
 Granite Gold Mining Co, B F Millard pres-treas-mgr, W R Millard v-pres,
 G B Brubaker sec, D F Millard asst sec, W R Millard supt, Hobo Bay
 Gravelle Aug, miner
 Greenig Danl T, saloon
 Grigsby Albert E, bkpr Valdez Bank & Trust Co
 Groll John, miner
 Gussefeld Otto, tailor
 Gustafson Frank A (Chisholm & Co) (Chisholm, Smith & Gustafson)
 Hablutzel Otto, miner
 Haines Bruce, lab
 Haines Paul, tinsmith
 Haines Thos W, lab
 Halvorson A, miner
 Hamburger Isaac, stngr U S Dist Court
 Hamilton J, mining
 Hand Chas A, clerk U S Dist Court
 Hansell Wm E, carp
 Hansen John, hlpr Valdez Brewing & Bottling Co
 Hara Thos, cook
 Harrington Cyrus W, mining eng

GOLDSMITH BROS. SMELTING & REFINING CO.

801-804 GREEN BLDG.

Highest Cash Price Paid for Old Gold, Silver and Platinum
 Without Delay of Assay

SEATTLE, WASHINGTON

Harrington Mae C Mrs, stngr G J Love
 Hay Lemuel, cook Orlando Riffle
 Hayes Feister, stngr
 Hayes Frank J, miner
 Hayes Geo, eng
 Heckey John S, city night marshal
 Heckey Ross, mining, rep Three-In-One Mining Co
 Hemple Copper Mining Co, S A Hemple pres, S I Hemple sec.
 Hemple S A, pres Valdez Mercantile Co, Hemple Copper Mining Co and
 Knight Island Copper Mining Co
 Hemple S I, sec Valdez Mercantile Co and Hemple Copper Mining Co
 Hendricksen Manvil F, asst cashr Valdez Bank & Trust Co
 Hepfinger Jacob C (Hepfinger & Golden)
 Hepfinger & Golden (J C Hepfinger, C H Golden), barbers
 Hermann Russell R, pharmacist Valdez Drug Co
 Hickey John, watchman
 Hickey Ross, councilman
 Hickson Fred, carp
 Higgins Smith, tmstr
 Hihnala Hilda M, tel opr Alaska Water, Light & Telegraph Co
 Hihnala Nicholas, miner
 Hill Edwd, miner
 Hines Paul, tinsmith
 Hitcher E J
 Hoffman Harry C, janitor Valdez Public Schools
 Holger Henry, miner Cliff Mining Co

MARINE SUPPLY COMPANY

WHOLESALE AND RETAIL DEALERS

Ship Chandl'r, Cordage, Marine Hardware, Engineers and Cannery Supplies

PIER 2

SEATTLE, WASH.

AKOZ

A Natural Mineral Remedy for
 Stomach Trouble, Chilblains,
 Frost Bites, Catarrh
 All Drug Stores in Oregon and California
NATURA CO., San Francisco

RHEUMATISM

'See Page 65

Holm Otto, miner
 Holmes P Wm, tmstr
 Holtness Einar A, lab
 Honey Boy Mining Co, B F Millard pres-treas-mgr
 Hopkins Melvin M, phys in charge U S Marine Hospital Service
 Hoser J, miner
 Hotel Phoenix (Andreas von Gunther)
 Hotel St Elias (Mrs Albert L Florence)
 Howard Chas C, foreman Alaska Road Comm
 Howell Benj, miner
 Howell Jas, miner
 Hubbard Jas T, brtnr
 Hubbard Oliver P, lawyer
 Huber Henry, mesgr Alaska Road Comm
 Hummel Harry, mining
 Hunt Alvah P, clk Edwin W Hunt
 Hunt Edwin W, confr
 Hunt Martin E, lab
 Hunt Phinney S, phtgr
 Hunt Thos H, miner
 Independent Laundry (Harry E F King)
 Ingram John H, supt Alaska Road Comm
 IRVING J H Co, J H Irving Pres-Mgr, Merchant Tailors for Men and
 Women 211 Columbia, Seattle, Wn., and Juneau, Alaska (See right
 side lines and p 68)



WAGONS
 TEAMING, DUMP, LAUNDRY,
 EXPRESS

Western Ave. and Columbia St.

SEATTLE

Jacobsen Soran A, carp
 Jacobson Wm, lab
JEFFERSON JESSE D, Postmaster
 Jeffries Geo W, mining
 Jensen Adsen S, brtnr Chisholm & Co
 Jensen Peter, painter
 Jepson Nels, roadhouse
 Johnson Carl, miner
 Johnson Essie
 Johnson Fannie Mrs
 Johnson Harold, clk
 Johnson John, tmstr
 Johnson Rosa, prospector
 Johnson R (Alameda House)
 Johnson Theodore, miner
 Johnston Frank J, foreman Alaska Road Comm
 Jones Saml, sergt U S A Signal Corps, lineman
 Jones Wm, miner
 Kanitz Otto, lodgings
 Kedwell F L, quartermaster sergt U S A
 Keegan John J, lab
 Keesler E C, prospector
 Keesler Gladys, tel opr Valdez Electric Co
 Keesler Harlan, printer Prospector Publishing Co
 Kelley King E A, prospector
 Kelley Robt E, prospector

PACIFIC ALASKA NAVIGATION CO. "THE ADMIRAL LINE"
 PUGET SOUND-ALASKA ROUTE—S. S. ADMIRAL WATSON AND ADMIRAL EVANS
 FIRST CLASS PASSENGER AND FREIGHT SERVICE
 PIER 1, SEATTLE

SMITH, DANIELS & KELLER

WHOLESALE

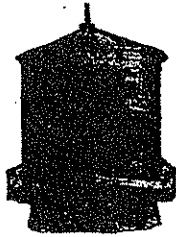
Men's, Women's and Children's
 Underwear, Hosiery, Etc., Staple
 and Fancy Notions
 SEATTLE

ALASKA STEAMSHIP CO.

SEATTLE
BEST BOATS FINEST MEALS
OPERATES ON ALL ALASKA ROUTES

554

(1915-16) R. L. POLK & CO.'S



Tanks

For Water, Oil
 Mining
 Tank Towers
 Cyanide Plants

PIPE

For Water Works
 Irrigation
 Mining
 Power

**National
 Tank & Pipe
 Company**

Formerly P. T. & P. Co.

OFFICE
 275 OAK STREET
 Portland, Oregon

FACTORY
 KENTON STATION



VALDEZ—Continued

Kelsey Minnie A Mrs, tchr Valdez Public Schools
 Kelsey Robt D, cashr Valdez Dock Co
 Kernan Frank, pres Valdez Mining Co
 Kibble Melvin, miner
 Kimball Jas, btrndr
 King Harry E F (Independent Laundry)
 King Herbert A, btrndr K J McLean
 King Horace P, grocer, councilman
 King H Porter, clk Horace P King
 King Wm H, hoisting eng
 Kirk Jones H, sec-treas Alaska Water, Light & Telephone Co
 Kirk Sergeant, U S A Signal Corps
 Knight Island Copper Mining Co, S A Hemple pres, J C Dieringer sec
 Knudson Christ, lab
 Knudson Saml, wharfinger Valdez Dock Co
 Koppas Chas, miner
 Korth Esther E, tel opr Valdez Electric Co
 Korth Frank T, tinsmith
 Korth Una J, stngr
 Kramer Chas H, mining
 Kramer Wm H, clk I Blum & Co
 Kunzig L A Lieut, distribursing Officer Alaska Road Commission
 Lacy Geo, mining
 LaMar, Clara, waiter Orlando Riffle

FRANKLIN TOOL WORKS

SEATTLE, WASH.

Manufacturers
 Mill, Mine, Cannery and
 Fishery Supplies
 See Page 56

Lamping Edna Mrs
 Lang Arthur, clk U S Court
 Larsen Michl C, eng
 Larson Chas, eng
 Larson Eli S, prospector
 Larson Louis C, prospector
 Larson Ray T

LATHROP JAMES M, Pres Valdez Dock Co
 Launch Brighton, C P Stamey master, Valdez to Port Wells weekly
 Laurence Sydney M, phtgr
 Lawrence Andw J, elec
 Layton Peter, prospector
 Leach Marion, linotype opr Prospector Publishing Co
 Leavelle H L Mrs (wid Harvey L)
 Lee Wm E, miner
 Leedy John, transitman
 LeGaillard August, porter
 Leo Anna, waiter Jos McCoy
 Leopold N, clk S Blum & Co
 LeRoux Zolo F, dressmkr
 Lerow Alex, tmstr
 Levy E Wm, saloon
 Lighthall Chas, miner
 Liston Harry, lab
 Littlejohn Chas W Mrs
 Lockhart B B Mrs, stngr

SEATTLE MACHINE WORKS, Inc.

Dredges and Dredging Machinery

Lander Street and East Waterway

SEATTLE, WASHINGTON

Preferred Stock Groceries

Allen & Lewis, Distributors, Portland, Ore.

ALASKA GAZETTEER AND DIRECTORY (1915-16)

555

Lockhart Eva, stngr
 Long Granville W (Valdez Iron Works)
 Lorance Mrs
 Love Clarence H, barber
 Love Geo J, lawyer and U S Commissioner, sec-treas Love-Whitley Co
 Love-Whitley Co, Harry T Whitley pres, Geo J Love sec-treas, grocers
 and meats
 Lows W Frank, brtnr E W Levy
 Ludwick Wm H, tmstr
 Lufkin Wm, tmstr Valdez Trf Co
 Lund Al, porter
 Lynch John E Sergt, asst chief opr U S A Signal Corps
 Lyons John R (Lyons & Ritchie)
LYONS & RITCHIE (John R Lyons, Elmer E Ritchie), Lawyers
 McChesney Robt J, printer Prospector Publishing Co
 McCoy Jos, restaurant and bakery
 McCraw Wm, prospector
 McDonald Elmer E, prospector
 McDonald F H, millman
 McDonald F J, millman
 McDonald J M, tmstr
 McDougall John D, mach
 McGilvray John A, elec Valdez Electric Co
 McHie Jas, launch owner
 McIntosh Robt, freighter

L. HURWITZ & CO. Seattle, U.S.A.

General Merchandise Jobbers

WE WILL FILL YOUR ORDER FOR ANYTHING IN THE LINE OF MERCHANDISE

McKeown Ione Mrs, waiter
 McKinney Geo W, porter Seattle Hotel
 McLean Kenneth J, saloon
 McMillan John H
 McMillan Wm H, miner
 McMillion Max, lab
 McMullen Geo B, bottler Valdez Brewing & Bottling Co
 McNeice Saml, carp, sec Valdez Chamber of Commerce
 Malcolm Timothy, launchman
 Malutin Barbara, dom
 Marketon J, blksmth
 Marovich Andw M, restaurant
**MARTIN JESSE C, Sec Valdez Dock Co, Sec-Treas Ramsay-Rutherford
 Gold Mining Co, Pres Valdez Commercial Assn**
 Martin Oliver, Carp
 Martinson Senova, whk Independent Laundry
 Mathison Chas, cook
 Mayor of Valdez, Frank M Boyle
MEAD GEORGE M, Pres-Mgr Valdez Sheet Metal Works (See p 561)
 Meals Andw J, guard U S jail
 Meals John E, bkpr Blum & Co
 Meals Owen, automobiles
 Meals Wm B, clk Valdez Mercantile Co
 Mellerk Chas, miner
 Mente B, mining
 Merchant Norman, mining

Dr. J. Brown Dentist

627 First Ave.

SEATTLE

Foot of
Cherry St.

Best Work

Save Your Teeth

American Dredge Building & Construction Co.

503-4 Pioneer Bldg., Seattle, Wash., U. S. A.

Small Dredges for Alaska Trade a Specialty

THE BREYMAN LEATHER COMPANY

LEATHER, FINDINGS, SHOE STORE SUPPLIES, SHOE
MACHINERY AND SADDLERY GOODS

329-331 EVERETT STREET

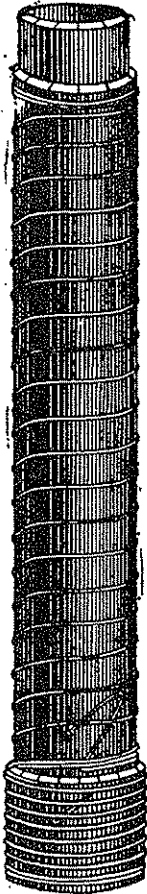
PORTLAND, OREGON

556

(1915-16) R. L. POLK & CO.'S

MANUFACTURERS

**WOODEN
WATER
PIPE**



**Washington
Pipe &
Foundry Co.
TACOMA, WASH.**

VALDEZ—Continued

Merrfield E E, bkpr Valdez Mercantile Co
Merrifield Geo H, miner
Millard Benj F, pres-treas-mgr Granite Gold Mining Co and Honey Boy Mining Co
Millard D Frank, asst sec Granite Gold Mining Co, cashier Valdez Sheet Metal Wks, agt Wells Fargo & Co Express
Millard W Ray, supt Granite Gold Mining Co
Miller Catherine M
Miller Chas, porter The Buffet
Miller Dorothy, tel opr Alaska Water, Light & Telephone Co
Miller Fred H, blksmith
Miller Henry J, mesgr U S A Signal Corps
Miller John B, stngr
Miller Lillian (wid Henry W)
Miller Sabian, clk
Mineral Creek Gold Mining Co
Molony Edwd H Rev (Episcopal Church of the Ephiphany)
Monohan K L, deputy clk U S Court
Moore Walter R, porter Hepfinger & Golden
Morais Oliver, lab
Morgan Clifford L, hook tndr
Morgan J, miner
Morgan W L, cook
Morton Wm J, meat ctr Love-Whitley Co

THE A. H. AVERILL MACHINERY CO.

PORTLAND—SPOKANE

**RUSSELL ENGINES, BOILERS
SAW MILLS**

Morton Wm R, mining
Moses L R Corp, opr U S A Signal Corps
Moss Geo, lab
Mossman Clarence W, deputy U S marshal
Mulvey Frank P, elec eng Alaska Water, Light & Telephone Co
Munley Wm A, asst U S district attorney
Murai B M, cook
Nafted Knut, roadhouse, Tonsina
Narey Jas, shoemaker
NEITRO SANATORIUM, Dr A W Neitro Founder and Manager, A Place to Get Relief From Rheumatic and Nervous Diseases 4026 Brooklyn Av, Seattle, Wash (See p 112)
Nelson Carl, brtndr K J McLean
Nelson Frank, boatman
Nelson Nels, carp
Nieninger F R, asst batteryman U S A Signal Corps
Nikolai Mining Co
Nolan Knute, miner
Northern The, lodgings
NORTHERN LIFE INSURANCE CO, H C Henry Pres, T M Morgan Vice Pres and Actuary, D B Morgan General Manager, Arthur P Johnson Sec, John F Bamford Asst to Gen Mgr, Jas B Eagleson Medical Director, Wm J Brown Cashier, Home Office Northern Life Bldg, 4th Ave cor Seneca, Seattle, Wn (See backbone and p 41)
O'Langon P H Mrs
Oliver Seamer L, miner

WE DELIVER PROMPTLY
The Goods

THE "HEAVY HARDWARE," "IRON AND STEEL MERCHANTS"
WESTERN HARDWARE & METAL CO., SEATTLE, WASH.

Bogardus Testing Laboratories

ASSAYERS AND CHEMISTS

SEATTLE

INSPECTING AND TESTING ENGINEERS

Established 1890

ALASKA GAZETTEER AND DIRECTORY (1915-16)

557

Olsen Peter, miner
Olson Chas, lab
Olson David, miner
Olson Matilda Mrs, boarding
Olson Nels E, launch owner
Olson Nels E Mrs, nurse Valdez Hospital
Olson Oscar, carp Alaska Road Comn
Order of Alaskan Moose, Pioneer Tent No 1, D F Millard sec
Orpheum Theater (A H Pinkus), motion pictures
Oslund Christina Mrs, lodgings
Owens Lewis, miner
PACIFIC ALASKA NAVIGATION CO (THE ADMIRAL LINE), B F Watson General Agt, Valdez Dock Co Local Agts (See right side lines and p 95)
Paden Ross B, miner
Panama The (Logan Archibald), hotel
Patrick Thos P, tmstr
Patrick Thos P Mrs, waiter Orlando Riffle
Patterson Jas A, blksmith
Paule John M, laundry and cigars
Payne Chas, tmstr J E Wilson
Payne John, tmstr J E Wilson
Peterson Sarah H, bkpr Frye-Bruhn Co
Peterson Chris, miner
Peterson Peter J, miner

See Page 49

St. Paul & Tacoma Lumber Co.

TACOMA, WASHINGTON

Phillips Fred, painter
Pinkus Arthur H (Orpheum Theatre)
Pinzon Liquor Co (Chas E Sealey, J B Gelineau), billiards and cigars
Pioneers of Alaska, Tent No. 7, Chas M Day pres, Eugene G Ames sec
Pitman Delbert D sergt, cashr U S A Signal Corps
Plant Jas, jeweler
Postle Elmer, prospector
POST OFFICE, Jesse D Jefferson Postmaster
Powell Addison, mining
PROSPECTOR PUBLISHING CO, C G Wulff Mgr, Publishers Valdez Daily
Prospector and Valdez Miner
Qually Belle, cook
Quinn Thos G, pres-mgr Alaska Water, Light & Telephone Co
Quinn Walter, brtnr
Rakoceovich Bagden Wm, hlpr A M Marovich
Ramsay-Rutherford Gold Mining Co, Henry Deyo pres-mgr, J C Martin sec-treas
Raymond Jennie Mrs, lodgings
Reinke Geo O, watchmkr
Remington Grant H, carp
Reynolds Clarence C, guard U S jail
Reynolds House (Mrs T M Daniels), lodgings
Richardson W P Col, pres Alaska Road Commission
Richter Alois, baker Rudolph Schmidt
Riffle Orlando, restaurant
Ritchie Elmer (Lyons & Ritchie), pres Valdez Electric Co



THE BORDER LINE

Southeastern
Alaska
Safety, Comfort,
Lowest Rates

S. S. ALKI

From Pier 4, For

Ketchikan,
Wrangell,
Petersburg,
Thane,
Douglas,
Treadwell,
Juneau,
Sitka.
Passengers and
Freight

S. S. DESPATCH

From Pier 4, For
Ketchikan and
West Coast Prince
of Wales Island
Points to Port
Armstrong,
Hoonah, Thane,
Douglas, Tread-
well, Juneau.
Passengers and
Freight.

S. S. NORTHLAND

For Ketchikan and
All Southeastern
Alaska Points.
Freight and
Explosives.

The Border Line Transportation Co.

Ticket Office 103
Yesler Way
Wharf Ticket
Office Pier 4
SEATTLE, WASH.

UNION CONSTRUCTION CO.

BUILDERS OF

PLACER DREDGES, UNION DRILLS, NEILL JIGS

604 MISSION ST., SAN FRANCISCO.

CATALOGUES

John A. Roebling's Sons Co.

OF CALIFORNIA

Iron, Copper and Steel Wire of Every Description. Expand Metal Lath. Wire Nail.
900 FIRST AV. SOUTH, SEATTLE, WASH. TEL. MAIN 4992

558

(1915-16) R. L. POLK & CO.'S

VALDEZ—Continued

Ritter Chas W, prospector
Robbins Geo W (Valdez Undertaking Co)
Robert Herbert, lab
Robinson Wm H, lab
Rohlfis Otto D, surv Alaska Road Comn
Roman Catholic Church (Rev J H van der Pol)
Romohr Chas C, tmstr Valdez Transfer Co
Rosenthal Louis, miner
Rucker Mrs
Rudolph Chas C, paints and wall paper
Rudolph Jewell M, tel opr Valdez Electric Co
Rudolph Kenneth E, clk Chas C Rudolph
St Marie Lillie C Mrs, boarding
Saling Harley M, with Alaska Road Comn
Saling Harley M Mrs, tchr Valdez Public Schools
Sandberg Anna C Mrs
Sanders Geo, painter
Savoy John A, miner
Searce Robt L, opr U S A Signal Corps
Schaeffer Louis
Scharringhausen Henry, mining
Schiesz Balsler, barber
Schiffer Christ, cook U S jail
Schmidt Chas, mach

Multnomah Trunk & Bag Co.

Manufacturers of Trunks, Suit Cases, Telescopes, Traveling Bags
and All kinds of Special Work, Either Trunks or Suit Cases
82 E. WATER STREET PORTLAND, OREGON

Schmidt Rudolph, grocer and baker
Schmidt Wm, brtnr The Buffet
Schnuer Max, brewer Valdez Brewing & Bottling Co
Schultz Harry, clk
Scott Robt, cook
Scott Willard, town marshal and health officer
Seagreen Chas, carp
SEALEY CHARLES E (Pinzon Cigar Co), Pres Sealey-Davis Mining Co
SEALEY-DAVIS MINING CO, Charles E Sealey Pres, Angus Chisholm
Vice-Pres, H F Suesdorf Sec-Treas, L D Colvin Supt
Seattle Hotel (Chas M Day)
Seideman Otto, miner
Shafer Robt A, miner
Sharts Henrietta Mrs, smstrs
Sharts Robt L, printer The Commoner
SHAW GEORGE K, Lawyer, Real Estate and Collections Panama Bldg
Portland, Oregon (See p 48)
Sheehan Danl W, miner
Sheeker Danl A, barber Wm Z Gelineau
SHELDON'S AUTO STAGE LINE, Robert Sheldon Mgr, Operating Auto
Stages between Fairbanks, Chitina, Valdez (See p 247)
Shepherd Wm A Rev, asst rector Roman Catholic Church
Shinn M, eng
Shoup Glacier Mining Co, Chas B Smith sec
Shrynne John, musician Orpheum Theatre
Silverman Benj, clothing

"Isaacson's" NON-BREAKABLE Alaska

THAWING POINTS

Seattle

Write for
Prices, Etc.

THE ONLY POINT ON THE MARKET

That Will Not Break

Hose Securely Fastened With Clamp and

Spring Washers

LINK-BELT AND DODGE PRODUCTS CO.

SEATTLE, WASH.—PORTLAND, ORE.

ELEVATING, CONVEYING, POWER TRANSMISSION

CATALOGS ON REQUEST

HARDWOOD LUMBER

EHRlich-HARRISON COMPANY

SEATTLE

WASHINGTON

ALASKA GAZETTEER AND DIRECTORY (1915-16)

559

Simmons Harry, prospector
Skinner Bert, carp
Smith Adolph G Mrs, lodgings
Smith Adolphus G (Chisholm, Smith & Gustafson)
Smith Chas B, real est, sec Shoup Glacier Mining Co
Smith Geo H, supt Granby Consolidated Mining, Smelting & Power Co
Smith Robt, woodsman
Smith Wm, mining
Snyder B M, opr U S A Signal Corps
Snyder John G, gen mdse
Soames Geo, lab
Soule Wm A, surv Alaska Road Comn
Spearsted Edwd, miner
Spenard Jos A, 2d hd gds and expmn
Spense A Ruth, clk to U S District Attorney
Spense Toy, tchr Valdez Public School
Spense W N, U S District Attorney
Stamey C P, master Launch Brighton
Stamey Thos P, fox breeder and mail carrier Star Route
Standard Copper Mines Co, Jas Burke, mgr
Stanton Jos, mail carrier Star Route
Stanton Michl, miner
Steinfelt Hans, lab
Stepa Felix, cook A M Marovich
Stevens Edna, prospector

"Yellow Strand" and All Other Grades of Wire Rope
CAMP, MILL AND MINE SUPPLIES

Broderick & Bascom Loggers Supply Co.
623-5 WESTERN AVE. SEATTLE, WASH.

Stevens Florence Mrs, ladies' furngs
Stevens J E, miner
Stewart Elliott, foreman Prospector Publishing Co
Stine Vance D, opr U S A Signal Corps
Stone Frank, miner
Stonehammar Eric, lab
Stoter Fred, miner
Stoter H W, miner
Stoveken Frank J, boiler mkr
Stuart Walter T, lineman Alaska Water, Light & Telephone Co
SUESSDORF HENRY F, Mgr Copper Block Hotel, Sec-Treas Sealey-Davis
Mining Co, Sec-Treas Alaska Liquor & Trading Co (See left side lines
and p 546)
Sullivan Albert F, deputy U S marshal
Sullivan Viola Mrs, clk P O
Sundt Ernest, miner
Swan Adam (Alaska Emporium)
Swanson Andw J, prospector
Swanson Chas, master launch B F M
Swanson Paul, driver Frye-Bruhn Co
Sweet E A, tmstr Valdez Transfer Co
Swenson W, plastering contr
Swine John, lab
Syring H Mrs (wid Herman) (Arctic Hotel)
Tausen B M, miner
Taylor Saml, miner

P
I
O
N
E
E
R

BINDERY
AND
PRINTING CO.

STATIONERS
ENGRAVERS
BLANK BOOK
MAKERS
LOOSE LEAF
LEDGERS

T
A
C
C
O
M
A

Inside Passage Excursions

ALL ALASKA STEAMSHIP COMPANY'S VESSELS

On Southwestern and Southeastern Routes Operate via Inside Passage



WILSON'S BOAT AND SHIPYARD

JOHN WILSON, Proprietor

Pleasure or Commercial Boat Building and Repairing—Doxy Building for the Fishing Trade a Specialty

SEATTLE,

WASH.

560

(1915-16) R. L. POLK & CO.'S

T. F. CLARK CO. Inc.

M. SILVER
Manager

Manufacturers

of All
Kinds of
SHEET
METAL
WORK

Made For
ALASKA
SINCE
1897

YUKON
STOVES
HYDRAULIC
NOZZLES
TANKS

GENERAL
MARINE AND
SHEET METAL
WORK DONE

602-615
Railroad Ave.
SEATTLE,
WASH.

VALDEZ—Continued

Thomas Wm, meat ctr Frye-Bruhn Co, councilman
Three-In-One Mining Co, Ross Hickey rep
Tillikum Club Association, L A Kunzig pres, Jas Fish sec
Tjosevig Christn, miner
Todd Chester J, court crier
Topliff Chas P, mining eng
Treat Geo C, mining
Trinity Mining Co, H E Ellis pres
Tunson Robt, miner
United States Army Quartermaster's Dept, Lieut Clarence A Dougherty in charge
United States Army Signal Corps, Lieut Clarence A Dougherty in charge
U S Commissioner and Recorder, Valdez Precinct 3d Division, District of Alaska, Geo E Love
U S Court, District of Alaska, 3d Division, Hon F M Brown presiding judge
U S Marine Hospital Service, M M Hopkins phys in charge
U S MARSHAL, 3d Division, District of Alaska, F R Brenneman
United States Military Telegraph & Cable System, Lieut Clarence A Dougherty in charge
Ursuline Convent, Ursuline Nuns of the Ursuline Roman Union, Sister Mary of the Angels mother superior
Valdez Bank & Trust Co, Edwin Eckern cash, M F Hendricksen asst cash
Valdez Brewing & Bottling Co, A J Wendler pres-mgr

ASK YOUR DEALER FOR

Washington Shoe Mnfg. Co.'s SHOES OF QUALITY

Valdez Chamber of Commerce, O P Hubbard pres, C C Rudolph v-pres
Saml McNeice sec, C M Day treas
Valdez City Dock
Valdez Commercial Association, J C Martin pres, Jas Fish sec
VALDEZ DAILY PROSPECTOR, Prospector Publishing Co Publr
VALDEZ DOCK CO, J M Lathrop Pres, J C Martin Sec, Agent Pacific Alaska Navigation Co (Admiral Line) and Alaska Steamship Co, Fuel and Feed, Saml Knudson Wharfinger (See adv)

Valdez Dock Co. Public Wharf

DEALER IN

COAL, HAY and GRAIN
VALDEZ, ALASKA

Valdez Drug Co (John H Biggs, T Jeff Devinney)
Valdez Electric Co, E E Ritchie pres, Wm M Wilson treas, John W Gilson sec, E A Erickson supt

MOULDINGS AND MILL WORK
STETSON & POST LUMBER CO., SEATTLE

SMITH & BLOXOM

Wholesale FRUITS and VEGETABLES

Madison, nw Cor. Western Ave.

SEATTLE, WASH.

ALASKA GAZETTEER AND DIRECTORY (1915-16)

561

Valdez Fire Department, Wm Finical chief
Valdez Hospital (Dr Ernest C Dalton)
Valdez Hydraulic Gold Mining Co, Mrs W M Finical sec
Valdez Iron Works (Granville W Long), machinists
Valdez Mercantile Co, S A Hemple pres, S I Hemple sec, gen mdse

Valdez Sheet Metal Works

INCORPORATED

PLUMBING—HEATING

Paints and Oils, Motor Boat Supplies, Pumps, Valves and
Hose, Pipe and Fittings

VALDEZ

ALASKA

VALDEZ MINER, Prospector Publishing Co Pubirs
Valdez Mining Co, Frank Kernan pres, T J Donohoe v-pres, John R Lyons
sec
Valdez Public Library
Valdez Public Schools, Frank G Davis prin, Toy Spence, Mrs Harley M
Saling, Mrs Minnie A Kelsey tchrs

GOLD SHIELD COFFEE

"ALWAYS GOOD"—SOLD IN SEALED CANS ONLY

Roasted and Packed by SCHWABACHER BROS & CO., Inc. Seattle

VALDEZ SHEET METAL WORKS INC, G M Mead Pres-Mgr, Sheet Metal
Work, Pumps, Valves, Plumbing, Heating, Etc (See adv)
Valdez Transfer Co (Andw M Dieringer), freighters
Valdez Undertaking Co (Geo W Robbins)
van der Pol J H Rev (Roman Catholic Church)
Voll Chas H, assayer
von Gunther Andreas (Hotel Phoenix), councilman
WALDRON COMPANY, Rugs, Furniture, Carpets, Linoleums, Etc, 1322
4th Av, Seattle, Wn (See opp p 464)
Waldron Geo S, launchman
Walker Chas, miner
Waller B F Sergt, batteryman U S A Signal Corps
Walsh Harry
Walter Frank E, brtnr
Washburn Loren F, lineman U S A Signal Corps
Wathey Earl T, clk Valdez Drug Co
Wathey May Mrs
WATSON B F, General Agt Pacific-Alaska Navigation Co, res Seward
Weber Catherine Mrs
Weber Robt, carp
Wecter W, foreman Alaska road comn
Welch Nicholas, carp
Wells Fargo & Co Express, D F Millard agt
Wendler Anton J, pres-mgr Valdez Brewing & Bottling Co
Wesserling Wm J, miner

Mining, Marine and Canning Machinery Manufacturers

Repair Work of All Kinds. Cylinder Boring and Packing. Ship, Boat and Launch Repairs
Mast and Spar Makers

Wright & Smith Machine Works, Seattle, Wn.

Pacific Alaska Navigation Co. "The Admiral Line"
PUGET SOUND-ALASKA ROUTE—S. S. ADMIRAL WATSON AND ADMIRAL EVANS
FIRST CLASS PASSENGER AND FREIGHT SERVICE
PIER 1, SEATTLE

Alaska Merchants will find our general catalog a great help to them in making up mail orders. Write for a copy.

Western Dry Goods Co., Wholesale

SEATTLE, WASH.

562

(1915-16) R. L. POLK & CO.'S



Dr.
Edwin J.
BROWN
D. D. S.

Seattle's Leading
Dentist

713 First Avenue,
Union Block.

Established 25
Years; All Work
Guaranteed 15
Years.

BEWARE of imi-
tators.

My Name is not
"J" but

EDWIN J.
BROWN

VALDEZ—Continued

WESTERN DRY GOODS CO, F E Parsons (Juneau) Agt, Wholesale Dry Goods, Etc, Seattle, Wn (See left top lines and p 27)

Whalen Chas D, opr U S A Signal Corps
Whalen Wm, dairy
Wheat Ernest B, v-pres S Blum & Co
Wheeler S Curtiss, watchmkr and optician
White Albert, theatre
White Geo F, assayer
White John N, miner
Whitley Harry T, pres Love-Whitley Co and Black Diamond Gold Mining Co
Whitman Frank, tmstr
Wikidel Thos E, miner
Wilsey Danl, mining
Wilson Fred A
Wilson Harry, miner
Wilson Jas E, freighter
Wilson John W, sec Valdez Electric Co
WILSON WM M, Vice-Pres Alaska Liquor & Trading Co, Treas Valdez Electric Co
Winans Chas A, phys
Winter Elizabeth E Mrs, ladies' furngs
Winter Todd D, watchmkr
Wintler Ralph, lab

Machinery For Power Transmission

COMPLETE 90-PAGE CATALOG ON REQUEST

PORTLAND IRON WORKS, PORTLAND, OREGON

Wood Edwd (Copper River Draying Co), councilman
Wortman's Roadhouse (Edwd P Cashman), 20 miles n
WULFF CHAS G, Mgr Prospector Publishing Co
Yoshida Geo, porter Pinzon Cigar Co
Young Edwd A, carp
Young Jas M, carp
Zheroff Mary, dom
Zheroff Michl, lab
Zheroff Philip, clk

VAULT. A mining settlement on a creek of the same name, 20 miles n of Fairbanks, the nearest banking point, and 2 w of Dome, its p o, which see for names.

VIRGIN BAY. See Ellamar.

WAINWRIGHT INLET. A settlement and government school on Wainwright Inlet of the Arctic Ocean, 120 mi sw of Barrow, nearest p o. Kilbuck J H Rev, tchr

WALES. Pop 650, mostly natives. A p o, mining settlement, missionary post, shipping point and headquarters of the mission reindeer industry, first settled in 1891, on Cape Prince of Wales and Bering Straitt, 145 miles nw of Nome, the banking point, and 15 nw of York. A weekly paper, the Midnight Sun, is published. It is a U S reindeer station and has the largest settlement of natives in Alaska. Tin mining is an important industry.

Alaska Tel & Tel Co
Alaska Tin Mining Co, C C Leonhausen supt
Anderson Jerry, mining
Bartel Marion, tin mining



Acorn Stamp Co.
Rubber Stamps, Seals, Stencils,
Badges, Checks, Etc.



219 Columbia St.

Seattle, Wash.

LOWMAN & HANFORD CO.

Booksellers, Stationers, Printers, Engravers - - - Seattle

ALASKA GAZETTEER AND DIRECTORY (1915-16)

563

Bartel's Tin Mining Co, Milton R Luther supt
Boyle Hugh, miner
Cape Reindeer Herd, meats and furs
Christenson H J, miner
Colwell Mattie, tchr Government sch
Crimm Fred, miner
Driscoll F B, miner
Fry Galen B, miner
Jones John, foreman Alaska Tin Mining Co
Kennedy Wm, miner
Kopkina, Sekina & Co, gen mdse and furs
Leonhausen C C, supt Alaska Tin Mining Co
Luther Milton R, supt Bartels Tin Mining Co
Midnight Sun The (weekly), Chas A Thompson editor
National Tin Co
Nestor Thos J, miner
O'Brien Wm, miner
Okboak Saml, gen mdse and furs
Pidgeon C C, supt U S Public School for Natives
Pidgeon Mary S Mrs, tchr Government sch
Reed Thos, miner
Thompson Chas A, phys and editor The Midnight Sun
Thompson Mary A Mrs, postmaster
U S Public School for Natives, C C Pidgeon supt
U S Tin Mining Co

UNIVERSITY BRAND MACKINAW COATS

The Garments That Men Prefer

Made of Famous Oregon Wool Mackinaw Cloth,
in an Extensive Line of Distinctive Patterns

MANUFACTURED BY

FLEISCHNER, MAYER & CO., Portland, Oregon

Wales Trading Co, gen mdse and furs
York Alaska Tin Co

WALLA WALLA. A roadhouse 39 miles from Isaacs and 22 nw of Moses' Roadhouse, on the winter trail to Nome

WARMCHUCK. A fishing settlement 80 miles nw of Ketchikan and 40 se of Petersburg, the banking point. Wrangell is the nearest p o.

Swift-Arthur Crosby Co, salmon cannery

WARREN. A mining settlement on Banner Creek, by which name it is also known, and the Seward Peninsula Ry, near Nome, the nearest p o, banking and shipping point.

WASHBURN. A stage station and discontinued p o, also known as Delta, on the Chitina-Fairbanks winter trail, 249 miles n of Chitina and 58 s of Fairbanks. U S Military Telegraph and Cable Office located half mile s called Little Delta. Mail to Salchaket.

Alburg Edith, cook Wm A Martin

Bauman John, miner

Kimball Jas, stables

Martin Wm A, roadhouse

Sullivan J E, roadhouse

Thurman Buford

Walker Thurlow, miner

WATERFALL. A p o on the west side of Prince of Wales Island on Ulloa channel, 100 miles w of Ketchikan, the banking point. Mail twice a week by launch.

Alaska Fish Co, F S Burkhart mgr, cannery

Burkhart F S, mgr Alaska Fish Co

Hospital

F
U
R
N
I
T
U
R
E

Aseptic
Furniture
Mnfg. Co.

The Only Factory
of Its Kind in the
West

1532 1st Av. S.
Seattle

Great Western Smelting & Refining Co.

XXX NICKEL BABBITT Seattle, Washington

CARMAN MANUFACTURING CO.
 Furniture, Mattresses, Springs, Cots, Iron Beds, Etc.
 We Specialize in Packing for Alaska Shipments
 Salesrooms: 1417 4th. Av. Factory: Cor. Railroad Av. & Massachusetts
SEATTLE, WASHINGTON

564

(1915-16) R. L. POLK & CO.'S

Goodrich

STEAM

HOSE

AND

WHITE

DREDGE

BELT

SAVE

YOU

MONEY

The

B. F.

Goodrich

Rubber

Co.

Seattle

Factories:
AKRON, OHIO

WATERFALL—Continued

Epperson W E, bkpr Alaska Fish Co
 McEwan Wm, supt Alaska Fish Co
 Morrison Geo, U S commissioner and mgr Tongass Trading Co
 Peterson P, bkpr E Weise & Co
 Semar Wm, mgr E Weise & Co
 Tongass Trading Co (Ketchikan), Geo Morrison mgr, gen mdse
 Weise E & Co, Wm Semar mgr, salmon saltery

WEARE. See Tanana.

WELLS. A settlement 24 miles n of Haines, the nearest p o. Mining is the principal industry.

WHITE MOUNTAIN. A settlement settled in 1899, at the base of a mountain of the same name, at the head of steamer navigation on Fish River, 28 miles w of Golovin, its p o, and 24 miles sw of Council. It is a trading station in winter. The Wild Goose Mining & Trading Co do the principal business, and run scows drawn by horses for passengers and freight to Council. Has telephone connection to Golovin, Council and Nome.

Morris Thos, mgr Wild Goose Mining & Trading Co
 Wild Goose Mining & Trading Co, Thos Norris mgr, shipping and storage

WHITE PASS. A telegraph station on the W P & Y Route at the summit, 20 miles n of Skagway, the nearest p o. This is the international boundary line, where two flags meet.

Lehmann Wm, section foreman W P & Y Route
 McGuire P, section hand W P & Y Route

Ship Chandlers, Ship Riggers, Ship Stores

Fishermen's Supplies
Sailmakers

SUNDE & d'EVERS Co

Colman Dock SEATTLE

Nichols Chas E, agt W P & Y Route
 Radovich S, section hand W P & Y Route
 Raut J, section hand W P & Y Route
 Renick W S, pumpman W P & Y Route
 Smith J C, section hand W P & Y Route
 Thomson W, section hand W P & Y Route
 White Pass & Yukon Route, Chas E Nichols agt

WILLOW CREEK. A mining settlement on a creek of the same name 175 miles n of Seward, the banking point, and 35 nw of Kink, nearest p o
 Emery E E, supt Martin Mine

Gold Bullion Mining Co, J H Lander supt
 Independence Mine
 Lander J H, supt Gold Bullion Mining Co
 Martin Mine, E E Emery supt

WILLOW CREEK ROADHOUSE. A roadhouse at the junction of the Valdez-Fairbanks and Chitina-Fairbanks trails, 39 miles n of Chitina and 268 s of Fairbanks.

Bingham F G, rancher
 Stewart Claude, roadhouse

WILSON'S HOT SPRINGS. A popular resort, also known as Big Chena Hot Springs and Chena River Hot Springs, situated on Monument Creek, a tributary of the North Fork of the Big Chena River, 61 miles e of Fairbanks, the nearest supply point and p o. All kinds of vegetables are profitably grown, owing to the warmth of the soil in the vicinity of the springs.

ROLLE-BARNES COMPANY
DRY GOODS SPECIALTIES - NOTIONS
WHOLESALE ONLY SEATTLE

ROCK DRILLS INGERSOLL - RAND CO.

THE ACCEPTED INGERSOLL-RAND TYPE

300 Colman Bldg., SEATTLE

NEW YORK

JUNEAU

Stock Carried in Seattle Warehouse

See Page 58

ALASKA GAZETTEER AND DIRECTORY (1915-16)

565

WILSON GEORGE W, Farmer, Baths, Cabins for Rent, Meals Served, Stables for Horses and Dogs

WINDHAM. A p o on Stephens Passage, 80 miles se of Juneau, the capital, and 60 nw of Petersburg, the banking point.

WISEWAN. A mining center, also called Right, on the Koyukuk River 70 miles ne of Bettles. Nolan is the p o name, which see for names.

WOEDSKY. A mining camp, first settled in 1900, formerly called Hattie Camp, 150 miles se of Juneau, the capital, and 28 nw of Wrangell. Petersburg is the banking point and p o.

WOLASATUX. A native village on the Yukon rver, 200 miles ne of Anvik and 10 s of Nulato; the nearest p o.

WOLF CREEK. A mining settlement on a creek of the same name, a tributary of Cleary Creek, 24 miles ne of Fairbanks, the banking point. Chatanika and Cleary are the nearest postoffices, which see for names.

WOOD ISLAND. A settlement on the islands of the same name, 90 miles sw of Cordova, the banking point. Latouche is the nearest p o.

WOOD RIVER. A trading post on the Tanana River at the mouth of Wood River, 45 miles below Fairbanks, the banking point, and 30 sw of Chena, the nearest p o.

WOODCHOPPER CREEK. A mining settlement on a creek of the same name at its confluence with the Yukon River, 50 miles se of Circle, the nearest p o, which see for names.

Smith Valentine, gen mdse

WOODCHOPPER CREEK. A mining settlement on a creek of the same name near Tofty, its p o, which see for names.

The "A. T. SPATZ" CAFE The Cafe That "Quality" Made
Alaskan Hotel Building, JUNEAU, ALASKA

WOODLAND ROADHOUSE. Located on the Chitina-Fairbnaks trail, 26 miles n of Chitina and 281 s of Fairbanks.

Daniel Herbert E, roadhouse

WOODROW. See Anchorage.

WORTMANS. A roadhouse, telegraph station and discontinued p o on the Eagle and Fairbanks military road, 336 miles s of Fairbanks and 20 n of Valdez, the banking point and p o.

Brannon Bernard E, opr in charge U S Military Telegraph & Cable Ssystem

Brannon Wm H, opr U S A Signal Corps

Cashman Edwd P (Wortman's Roadhouse)

Crichton Alex, tmstr

Lunnan D C

Mousey Arthur, miner

Rieman Gilbert M, bkpr and public stngr

Thayer Fredk B, sergt U S A Signal Corps, lineman

U S Military Telegraph & Cable System, Bernard E Brannon opr in charge

Wheeler Lawrence

Wortman's Roadhouse (Edwd P Cashman)

WRANGELL

WRANGELL. Pop 1,000. Situated on Wrangell Island, in Etolin Bay, 8 miles s of the mouth of the Stikine River, 120 se of Juneau, and 78 nw of Ketchikan, on the steamboat and mail route between Seattle and Skagway. Established by the Russians in 1800, headquarters for Cassiar

Mining Machinery

AND SUPPLIES FOR HYDRAULIC AND QUARTZ MINING

Vancouver, B. C. Northwestern Iron Works Seattle, Wn.

St. Paul & Tacoma Lumber Co.
Tacoma, Washington
LUMBER, LATH, SHINGLES, CEDAR SIDING, CREOSOTED LUMBER, POLES, PILING, PAVING BLOCKS, ETC.

See Page 49

D. A. JOHNSON HARDWOOD LUMBER AND FLOORING

Spruce, Cedar, Factory, Pattern and Boat Lumber

2430 FIRST AVE. SOUTH

SEATTLE

566

(1915-16) R. L. POLK & CO.'S

"BLACK BEAR" MEAS LONG WEAR
in OVERALLS Black Manufacturing Co. SEATTLE

WRANGELL—Continued

miners since the boom of 1873, and for all transportation on Stikine River by steamers and canoes. Celebrated for scenery, fishing and hunting. Local information for sportsmen, and in regard to famous big game hunting grounds on the Stikine furnished free by F Matheson, merchant and forwarding agent. The principal industries are lumbering, fishing, mining and furs. Usual banking point Seattle. Nearest bank, Peterburg. There are 3 churches, 2 schools, hospital, court house, custom house, bonded warehouse, electric light plant, sawmill, canneries, shingle mill, volunteer fire department, 6 general stores, large modern hotel, cable office, U S wireless office, weekly newspaper, U S court commissioner, deputy U S marshal and deputy customs collector. John E Wenden, P M.

City Officials

Mayor—John G Grant

Councilmen—John G Grant, Chas Bryant, C A Emery, Leo C Patenaude, Arnt Sorset, Frank Spalding, Nollie M Tate

Alphabetical List of Names

Adams John, barber

Alaska Fisheries Commission, Fred H Gray and Reginald F Irwin wardens

Alaska Garnet Mining & Mfg Co, Anna E Durkee sec-mgr

Alaska Packers Assn, Louis Schott supt

Alaska Sanitary Packing Co, Ora A Brown mgr

ALASKA STEAMSHIP CO, St Michael Trading Co Agts (See left top, left side and right bottom lines and pp 96 and 97)

F. T. CROWE & CO.

BUILDING MATERIALS
 CONTRACTORS SUPPLIES
 CEMENT LIME PLASTER
 PLASTER BOARD, NEPONSET BUILDING AND ROOFING PAPERS, PAROID ROOFING
 TOUCH BRO'S DAMP RESISTING PAINTS INSULATING MATERIALS

SEATTLE TACOMA PORTLAND SPOKANE

Amundson Fred, fisherman

Arctic Brotherhood, Camp Wrangell No 28, meets Wednesdays 8 p m, S E Shurick recorder

Bahovec Fred, lab Willson & Sylvester Mill Co

Barthold Fred, lab Willson & Sylvester Mill Co

Bender John R (Wrangell Photo Show), clk St Michael Trading Co

BENJAMIN CHAS O, Groceries, Hardware, Paints, Sporting Goods, Guns and Ammunition, Ansco Photo Supplies, Clothing and Men's Furnishings

Berg Ludwig, lab Willson & Sylvester Mill Co

Berger Wm, logger

Bihler Mary L, tchr Wrangell Public School

Bjorge John G, mgr Columbia & Northern Fishing & Packing Co

Borch Chas H, saloon

BORDER LINE TRANSPORTATION CO, St Michael Trading Co Agts (See right side lines and p 98)

Bromley Walter, cook Str Alaska

Bronson Fredk E, dep colr U S Customs

Bronson Margaret, bkpr F Matheson

Brown John, lab Willson & Sylvester Mill Co

Brown Ora A, mgr Alaska Sanitary Packing Co

Brown Ralph, edgerman Willson & Sylvester Mill Co

Bryant Chas, carp, councilman

Bryant C H, trapper

Campbell Ernest M, clk F Matheson

Campbell Hiram D, carp

S. A. PERKINS & CO.

WHOLESALE JEWELRY AND NOVELTIES

SEATTLE, WASHINGTON

Explosives

Mining and Blasting Powders

LIONITE POWDER CO.

PORTLAND, OREGON

ALASKA GAZETTEER AND DIRECTORY (1915-16)

567

Campbell Leonard, clk St Michael Trading Co
 Captain Jinks Co, gen mdse
 Card Geo W, logger
 Carlson Guy V, miner
 Carlson Oscar, carp
 Carlstrom Elmer F (Thlinget Trading Co)
 Case Lawrence, pressman Wrangell Sentinel
 Case Thos, confr
CHAMBER OF COMMERCE, Leo McCormack Sec
 Choquette Fredk, fisherman
 Choquette John, fisherman
 Chung Chas S, grocer
 Churchill Frank, capt Str Clatawa
 Churchill L N, water supervisor
 City Clerk, Paul F Stanhope
CITY MEAT MARKET (Cassius M Coulter), Wholesale and Retail Dealer
 in Fresh and Salt Meats, Fish and Game in Season
 Clark J S Rev (Presbyterian Church)
 Cole J N, tinner St Michael Trading Co
 Columbia & Northern Fishing & Packing Co, John G Bjorge mgr
 Cooper Jas W, brtnr J G Grant
 Coroner, Wm G Thomas
 Corser Harry P Rev (St Phillips Episcopal Church)
 Coulter Cassius M (City Meat Market)
 Coulter Frank L, eng

Saxony Knit

SWEATERS JERSEYS
 UNION SUITS, FANCY UNDERWEAR
 SPECIALISTS FOR ALASKA TRADE
Saxony Knitting Co. Seattle

Coulter Harry R, eng Str Clatawa
 Coutts Wm, eng Willson & Sylvester Mill Co
 Crawford M S, lab Willson & Sylvester Mill Co
 Cunningham Saml S (Cunningham & Sorset)
 Cunningham & Sorset (Saml S Cunningham, Arnt Sorset), saloon
 Dalgity Thos, guard U S jail
 Darwell Chas, fish buyer
 Denningburg Henry, eng, r Wrangell Hotel
 Drowatsky Dora, tchr Wrangell Public School
 Durkee Anna E, sec-mgr Alaska Garnet Mining & Mnfg Co
 Eastman Harry B, shoemkr
 Eastman Kodak Co, F Matheson agt
EMERY CHAS A, Dental Surgeon, Councilman
ENGSTROM ADOLPH, Groceries, Hardware, Clothing, Men's Furnish-
 ings, Phonographs and Records, General Merchandise
 Engstrom Adolph jr, clk Adolph Engstrom
 Evans J E, filer Willson & Sylvester Mill Co
 Farrer Frank, master mariner
 Feaks Fred, lab Willson & Sylvester Mill Co
 Ferguson Thos, fisherman
 Fletcher Wm, boat bldr
FOLLANSBEE CHAS, Cigars and Tobacco Wholesale and Retail, Fish-
 ing Tackle, Barber Shop and Baths
 Freeman R H, lab Willson & Sylvester Mill Co
 Gartley Harry W, pres Willson & Sylvester Mill Co, clk F Matheson
 Gil Nicholas, lab Willson & Sylvester Mill Co

Ellensbourg Produce Co.
 Manufacturers of PURITY BUTTER
 SEATTLE

Fidelity Adjustment Company
Collections--Adjustments
 427-28 Pioneer Bldg. Tel. Ell. 1643 Seattle

"COLUMBIA"
BRAND

STEAM HOSE

MANUFACTURED BY
GOODYEAR RUBBER CO.

THE BEST
BY TEST

R. H. PEASE, President

587-591 Market St., SAN FRANCISCO, CAL.

61-67 Fourth St., PORTLAND, ORE.

568

(1915-16) R. L. POLK & CO.'S

HAPPY HOME CANNED GOODS

HIGHEST GRADE. LUSCIOUS FRUITS AND SELECTED VEGETABLES

Schwabacher Bros. & Co., Inc., Distributors, SEATTLE

WRANGELL—Continued

Gingrass Frank E (Wrangell Machine Shop)
Goodrich Frank M, planerman Willson & Sylvester Mill Co
Grant B Y, clk Donald Sinclair
GRANT JOHN G (Wrangell Hotel), Mayor of Wrangell (See p 572)
Gray Fred H, warden Alaska Fisheries Comm
Hankins Howard C, master mariner
Harris C C, supt St Anna Cannery
Haskin Geo W, lab Willson & Sylvester Mill Co
Haskin Geo W jr, lab Willson & Sylvester Mill Co
Haught Philip, fisherman
Healey Maurice, fur buyer
Heinbockle Henry, lab Willson & Sylvester Mill Co
Hill Benj F, opr U S Cable Office
Hofstad Edwin, capt J S S Osprey
HOFSTAD MORTEN, General Merchandise and Fishermen's Supplies
Hogstram John, miner
Holenbeack Hazel, comp Wrangell Sentinel
Hood Wm, cigars
Horgheim Lawrence, whsmn St Michael Trading Co Dock
Howard Richard, logger
Hull Henry, lab
Humboldt Steamship Co, St Michael Trading Co agts
Independent Order of Redmen, Stikine Tribe No 5, M L Churchill chief of records

"If It's Belting We Have It"
GRATON & KNIGHT MFG. CO. - - SEATTLE

Irwin Reginald F, warden Alaska Fisheries Comm, r Wrangell Hotel
Jackson Chas N, fisherman
Jackvitz Adolph, fisherman
James Harry, carp Wm Fletcher
Jernigan Lee H, acct Columbia & Northern Fishing & Packing Co
Johansen Krist J, eng
Johnson Edwd, lab Willson & Sylvester Mill Co
Johnson John C, lighthouse kpr
Johnson M O, sawyer Willson & Sylvester Mill Co
Johnson Ole, bldg contr
Johnston David, wood dir
Johnston Fred S, jeweler
Jule J M, lab Willson & Sylvester Mill Co
Kalckbrenner C J, barber
Kalkins A J, fireman Willson & Sylvester Mill Co
Katzenmeyer M (Wrangell Machine Shop)
Kronmier Robt, fisherman
La Bounty Geo C, clk F Matheson
Larsen Christian, lab
Larsen Louis, trapper
Lee Albert, master mariner
Lee K S, lab Willson & Sylvester Mill Co
Lemieux Antime, saloon
Leonard Fred B (Wrangell Steam Laundry)
Lewis Fred, fish buyer
Lewis Wm, lab

Tile--Marble--Onyx--Terrazzo
CHAS. W. RODGERS COMPANY

See Page 93

Maritime Bldg.

FIREPLACE ACCESSORIES

Seattle

AKOZ

A Natural Mineral Remedy for
 Stomach Trouble, Chilblains,
 Frost Bites, Catarrh
 All Drug Stores in Oregon and California.
NATURA CO., San Francisco

RHEUMATISM

See Page 65

Lewis Wm H, moving pictures
 Lillian Nels A, bksmth Willson & Sylvester Mill Co
 Linderman E Mrs, housekpr Wrangell Hotel
 Lindskog Nels, lab Willson & Sylvester Mill Co
 Lloyd Wm E, fisherman
 Loftus Patk, bakery
 Lowrey Isaac E (Lowrey & Woodridge)
 Lowrey & Woodridge (Isaac E Lowrey, Walter F Woodridge), marble
 wks
 Lucas W A, carp
 Lynch Chas, brndr J G Grant
 Lynch Edwd P, clk Wrangell Hotel
 Lynch Eleanor, waiter Wrangell Hotel
 McCORMACK LEO, Agt Wells Fargo & Co, Express and Standard Oil
 Co, Sec Chamber of Commerce
 McCORMACK PETER C (St Michael Trading Co)
 McDonald Lewis J, logger
 McDonald Loretta, bkpr St Michael Trading Co Dock
 McGregor W P, cook
 McKay Robt, logger
 McKinney Marion, sawyer Wrangell Shingle Co
 McLean Geo, lab Willson & Sylvester Mill Co
 McNurney Michl A, opr in charge U S Cable office
 McTAGUE JOHN (Wrangell Meat Market) (See p 572)
 Mantel John, cooper



FARM MACHINERY
 PLOWS, HARROWS, SEEDERS,
 CULTIVATORS, ETC.

Western Ave. and Columbia St.

SEATTLE

Marshall Melville, fireman
 Mason Julius, gas engineer

MATHESON F, Department Store, General Merchant and Forwarding
 Agt, Dealer in Trappers and Loggers Supplies, Photo Sundries, Jew-
 elry and Curios, Sec Willson & Sylvester Mill Co (See adv)

Reliable Information (founded on eight years' personal experience) to Pros-
 pectors and Tourists a Specialty. Arrangements made for Transportation.
 Gasoline River Boat on Stikine River Running in Connection.

F. MATHESON, Department Store

GENERAL MERCHANT, FORWARDING AGENT, JEWELER,
 PHOTOGRAPHER AND NEWS DEALER

Raw Furs Bought and
 Sold at Market Prices

WRANGELL, ALASKA

MAYOR OF WRANGELL, John G Grant
 Meek Geo, lab Willson & Sylvester Mill Co
 Moore Chas, lab Willson & Sylvester Mill Co
 Moore Elsie, wkr Wrangell Steam Laundry
 Morikawa Frank K, restaurant
 Mukai H, restaurant

PACIFIC ALASKA NAVIGATION CO. "THE ADMIRAL LINE"
 PUGET SOUND-ALASKA ROUTE—S. S. ADMIRAL WATSON AND ADMIRAL EVANS
 FIRST CLASS PASSENGER AND FREIGHT SERVICE
 PIER 1, SEATTLE

SMITH, DANIELS & KELLER

WHOLESALE

Men's, Women's and Children's
 Underwear, Hosiery, Etc., Staple
 and Fancy Notions SEATTLE

THE LUTKE MANUFACTURING COMPANY
 PORTLAND Manufacturers of OREGON
SHOW CASES, BANK AND STORE FIXTURES
 Branch Grand Rapids Show Case Co.

570

(1915-16) R. L. POLK & CO.'S

Copper Block Hotel

H. F. Suesdorf, Mngr.
 Steam Heat, Electric
 Light, Hot Baths

Headquarters for Mining
 and Traveling Men
VALDEZ, ALASKA

WRANGELL—Continued

Murray Frank P, master mariner
 Myers A M, sawyer Willson & Sylvester Mill Co
 Nelson Chas, lab
 Nore Nels, lab Willson & Sylvester Mill Co
 Northrop Geo, eng Str Alaska
 Nussbaumer Nicholas, millwright
 Olsen Alfred, fisherman
 Osborn Albert (Wrangell Dairy)
 Owens Paul, boat bldr Willson & Sylvester Mill Co
 Pacific Coast Steamship Co, St Michael Trading Co agts
 Palmer Orville C (Wrangell Electric Light & Power Co)
 Palmer Merlin, elec Wrangell Electric Light & Power Co
 Parrott Walter E, gardener
 Patenaude Leo C, councilman
 Paul Louis, fireman Str Alaskan
 Perchment Wm, carp
 Phillips Harry, planerman Willson & Sylvester Mill Co
 Pigg Wm J, phys in charge Wrangell Hospital
 Presbyterian Church (Rev J S Clark)
 Prescott E J, setter Willson & Sylvester Mill Co
 Pritchett Kate, tchr Wrangell Public School
 Purinton Fred, eng
 Reade Wm W, boat bldr
 Rice Chas, lab Willson & Sylvester Mill Co

**FRANKLIN
 TOOL WORKS**

SEATTLE, WASH.

Manufacturers
 Mill, Mine, Cannery and
 Fishery Supplies
 See Page 56

Ronning Jorgen, miner
 Ronning Nels, watchman
 Rossini Brando, lab Willson & Sylvester Mill Co
 Royalty Gale, fisherman
 Royalty Wm T, fisherman
 Saffron Frank, fireman Willson & Sylvester Mill Co
 St Anna Cannery, C C Harris supt, fish pkrs
 St Leo's Catholic Church (Rev A Sweeve)
ST MICHAEL TRADING CO (Peter C McCormack), Agents Alaska
 Steamship Co, Border Line Transportation Co, Pacific Coast Steam-
 ship Co, and Humboldt Steamship Co, General Merchants and For-
 warders (See adv)

St. Michael Trading Co.

PETER C. McCORMACK, Proprietor

General Merchants and Forwarders

STEAMSHIP AGENTS

Furs Bought and Sold

WRANGELL, ALASKA

Contractors Equipment Co.
 PORTLAND SEATTLE

DIAMONDS ARONSON'S

WASHINGTON AND BROADWAY

PORTLAND OREGON

ALASKA GAZETTEER AND DIRECTORY (1915-16)

571

ST MICHAEL TRADING CO DOCK (Peter C McCormack), Leo McCormack Wharfinger

St Phillips Episcopal Church (Rev Harry P Corser)
St Phillips Gymnasium, Rev Harry P Corser in charge
St Phillips Native Guild, Deaconess Ella L Wood in charge
Salvation Army Barracks, R Smith capt
Schleppi Peter, carp
Schott Louis, supt Alaska Packers Assn
Schuler John, plumber
Shadesty Walter, eng Str Alaskan
Shurick Shelby C, phys
Sinclair Donald, gen mdse
Sinclair Wallace, clk Donald Sinclair
Skelton Geo F, brtnr Antime Lemieux
Smith Frank, mgr Wrangell Shingle Co
Smith R, capt Salvation Army Barracks
Sorset Arnt (Cunningham & Sorset), councilman
Spader Albert T, hunter
Spalding Frank, trapper, councilman
Spencer Ernest, tailor
Stackpole Fredk R, eng Willson & Sylvester Mill Co
Standard Oil Co, Leo McCormack agt
Stanhope Paul F, publisher Wrangell Sentinel, city clerk
Steadman John W, with St Michael Trading Co
Stevenson Alec, lab Willson & Sylvester Mill Co

LOCOMOTIVES CARS TRACTORS SCRAPING MACHINERY Railway Mining and Contractors' Supplies and Repairs

Machinists **NISQUALLY-RUSSEL CAR & LOCOMOTIVE WORKS** Boilermakers
Blacksmiths Car Builders

TACOMA

Stewart Frank J, lab Willson & Sylvester Mill Co
Stokell Carl, musician
Storch John G, brtnr Chas Borch
Surkoff John, lab Willson & Sylvester Mill Co
Sweeve Rev A (St Leo's Catholic Church)
Taarvig Christ, fisherman
Tamaree Thos, boom man
Tantow Herman, logger
Tate Nollie M, painter, councilman
Taylor Nellie M, tchr U S Public School for Natives
Taylor Wm, eng
THLINGET TRADING CO (Elmer F Carlstrom), General Merchandise
THOMAS WM G, U S Commissioner, Recorder and Justice of the Peace,
Lawyer, Fire and Marine Insurance
Trotman Edwd, lab Willson & Sylvester Mill Co
Twombly Chas, boom man Willson & Sylvester Mill Co
Uhler Ida (wid Henry)
Uhler Marguerite, tchr
U S Army Signal Corps
U S Cable Office, Michael A McNurney opr in charge
U S COMMISSIONER, Wm G Thomas
U S Customs, Fredk E Bronson dep colr
U S Marshal, Harry Wallace deputy
U S Public School for Natives, Nellie M Taylor tchr
Vogue Arthur, lab Wrangell Steam Laundry
Vreat Alex, mining

Your
Teeth
The
Right
Dr.
Brown
The
Sourdough
Dentist

BEST
WORK
IN
SEATTLE
DR. J. BROWN
627 First Ave.
SEATTLE

Portland Open-Air Sanatorium, Portland, Ore.

For the treatment of diseases of the lungs. Address all communications to the Medical Directors, Drs. R. C. & R. W. Matson, 1021 Corbett Bldg., Portland, Ore. Write for illustrated booklet. See full page advertisement elsewhere in this directory.

TRANSFER and STORAGE

C. O. PICK
Transfer & Storage Co.
PORTLAND, ORE.

572

(1915-16) R. L. POLK & CO.'S

**Alaska
Steamship
Company**

OPERATES
ON ALL

**Alaska
Routes**

ALL

**Alaska
Steamship
Co.'s**

Vessels on South-
western and
Southeastern
Routes Operate
via Inside Passage.

**ALASKA
STEAMSHIP
CO.**

SEATTLE, WN.

WRANGELL—Continued

WALDRON COMPANY, Rugs, Furniture, Carpets, Linoleums, Etc, 1322
4th Av, Seattle, Wn (See opp p 464)
Wallace Harry J, deputy U S marshal
Waterbury Arthur, lab Willson & Sylvester Mill Co
Waters Walter C, miner
Wells Fargo & Co Express, Leo McCormack agt
Wheeler Jas H (Wrangell Drug Co)
Wiggs Fredk, wood dir
Willson Fred S, v-pres-treas Willson & Sylvester Mill Co
Willson & Sylvester Mill Co, H W Gartley pres, F S Willson v-pres-treas,
F Matheson sec, lumber mnfrs

**EVERYTHING NEW AND CLEAN. FINE AIRY ROOMS. STEAM HEAT
AND ELECTRIC LIGHT. COURTEOUS TREATMENT**

OUR MOTTO:

"The Best of Accommodations is None too Good for Our Guests"

THE WRANGELL HOTEL

JOHN G. GRANT, Propr.

Fine, Light Sample Room for the Use of Commercial Travelers.
Rates Reasonable. Bar Room in Connection. This
Hostelry is Headquarters for Hunters

WRANGELL

ALASKA

Wing David L, clk C O Benjamin
Woodridge Walter F (Lowrey & Woodridge)
Worden John E, phtgr, postmaster and notary public



"Amazon" The STANDARD for Years
GUARANTEED STEAM HOSE

U. S. Rubber Co. of California, SEATTLE

Worden Lynn T, asst postmaster
Worden Nina S Mrs; music tchr
Wrangell Dairy (Albert Osborn)
Wrangell Drug Co (Jas H Wheeler)
WRANGELL ELECTRIC LIGHT & POWER CO (Orville C Palmer),
Electric Fixtures and Supplies
Wrangell Hospital, Wm J Pigg phys in charge
WRANGELL HOTEL (John G Grant), The Best Accommodation in
Southeast Alaska, Bar and Billiard Hall in Connection (See adv)
Wrangell Machine Shop (M Katzenmeyer, Frank E Gingrass), ma-
chinists
WRANGELL MEAT MARKET (John McTague), Dealer in Fresh and
Salt Meats, Game, Fish, Vegetables and Fruit in Season (See adv)
Wrangell Photo Show (J R Bender)

THE WRANGELL MEAT MARKET

JOHN MCTAGUE, Proprietor
CHOICE MEATS, POULTRY AND FISH
WHOLESALE AND RETAIL

"The best is none too good for our customers," is our motto.
Nothing but Choice Prime Steer Beef Carried

WRANGELL

ALASKA

IRON and STEEL HEAVY
HARDWARE

"DELIVERIES ALWAYS ON TIME"

WESTERN HARDWARE & METAL CO., Seattle, Wash.

B
SE
Wri
Wri
Wri
Wri
Bay
salt
and
cur.
day
Ahi
Anc
AX
Ber
Dav
Ear
Gra
Ital
Job
Mil
O'D
Pat
St
Tin
—
S
To:
Tr
PA
Ya
mo
20
Alk
Blk
Bu
Clk
Fr
Ha
Kn
Ne
Snr
U
YE
mi
of
dis
tar
Pr:
—
P

Bogardus Testing Laboratories

ASSAYERS AND CHEMISTS

SEATTLE

INSPECTING AND TESTING ENGINEERS

Established 1890

ALASKA GAZETTEER AND DIRECTORY (1915-16)

573

Wrangell Public School, Hiram D Campbell director, F Matheson clerk, Edwin Hofstad treas

Wrangell Sentinel (weekly), P F Stanhope publ

Wrangell Shingle Co, Frank Smith mgr

Wrangell Steam Laundry (Fred B Leonard)

YAKUTAT—Pop 200, mostly natives. A p o situated on Yakutat Bay, 256 miles nw of Juneau, the capital and banking point. A large salmon cannery is located here. There is a Swedish Evangelical Mission and a government school for natives. The making of Indian baskets and curios is quite an industry. Mail boat connection with Seattle every 10 days.

Ahnes A, cannery supt, Yakutat & Southern Ry Co

Anderson H T, prospector

AXELSON E M, Supt of Mission, Postmaster

Benson D S, gen store

Dawson J R, mgr W P Mills & Co

Early O N, gen mdse

Gray Wm, bakery and billiards

Italo T M, gen mdse

Johns E D, trapper

Mills W P & Co, J R Dawson mgr, gen mdse

O'Neill K J, phys Yakutat & Southern Ry Co

Patchen Karl, store mgr Yakutat & Southern Ry Co

St Elias Packing Co

Tinlman Carl, carp and watchman

See Page 49

St. Paul & Tacoma Lumber Co.

TACOMA, WASHINGTON

Torvick John, fireman and fisherman

Trefzger Hardy, trapper and taxidermist

PACIFIC ALASKA NAVIGATION CO (THE ADMIRAL LINE) (See right side lines and p 95), Seattle, Wn

Yakutat & Southern Ry Co, gen mdse and cannery

YES BAY—A cannery settlement and U S Bureau of Fisheries salmon hatcheries, 40 miles n of Ketchikan, the nearest banking point, and 20 miles n of Loring. Mail to Ketchikan, of which Yes Bay is a sub p o. Alaska Pacific Fisheries, canneries

Blake S W, foreman Yes Bay Canning Co

Burckhardt Chas, owner and mgr Yes Bay Canning Co

Claghorn B H, private sec Yes Bay Canning Co

Freeman W J, bkpr and storekpr Yes Bay Canning Co

Hancock Wm, supt in charge U S Bureau of Fisheries

Knudsen Ole, building foreman Yes Bay Canning Co

Nergaard Ole, fishing foreman Yes Bay Canning Co

Smith Geo, watchman Yes Bay Canning Co

U S Bureau of Fisheries, Wm Hancock supt in charge, salmon hatcheries

YES BAY CANNING CO, Charles A Burckhardt Owner and Mgr, Cannery and Gen Mdse

YORK. A discontinued p o on Cape York and the Bering Sea, 120 miles nw of Nome, the banking point, 45 miles nw of Teller and 15 se of Wales, the nearest p o. It is located in the Cape York tin mining district. The principal claims are located on Buck Creek and its tributaries, which enter the sea about midway between Cape York and Cape Prince of Wales.



THE BORDER LINE

Southeastern
Alaska

Safety, Comfort,
Lowest Rates

S. S. ALKI

From Pier 4, For

Ketchikan,
Wrangell,
Petersburg,
Thane,
Douglas,
Treadwell,
Juneau,
Sitka.
Passengers and
Freight

S. S. DESPATCH

From Pier 4, For

Ketchikan and
West Coast Prince
of Wales Island
Points to Port
Armstrong,
Hoonah, Thane,
Douglas, Tread-
well, Juneau.
Passengers and
Freight.

S. S. NORTHLAND

For Ketchikan and
All Southeastern
Alaska Points.
Freight and
Explosives.

The Border Line Transportation Co.

Ticket Office 103

Yesler Way

Wharf Ticket

Office Pier 4

SEATTLE, WASH.

UNION CONSTRUCTION CO.

BUILDERS OF

PLACER DREDGES, UNION DRILLS, NEILL JIGS

604 MISSION ST.. SAN FRANCISCO. CATALOGUES

John A. Roebling's Sons Co.

OF CALIFORNIA

WIRE ROPE AND WIRE ROPE FITTINGS

900 FIRST AV. SOUTH

SEATTLE, WASH.

TEL. MAIN 4992

574

(1915-16) R. L. POLK & CO.'S

YORK—Continued

Anderson Jerry, mining
Bartel Marion, tin mining
Boyle Hugh, miner
Christenson H J, miner
Driscoll F P, miner
Fry Galen B, miner
National Tin Co
York-Alaska Tin Co

YOSTS. A roadhouse and telegraph station (called McCallum) on the Delta River and Chitina-Fairbanks trail, 157 miles n of Chitina, 150 s of Fairbanks, the banking point, and 20 n of Paxson, the nearest p o. Reardon Wm J, opr in charge U S Military Telegraph and Cable System, McCallum

Thayer Fred, roadhouse
U S Military Telegraph and Cable System, Wm J Reardon opr in charge, McCallum

YUKAGAMUT. See Ikogmut.

YUKOKAKAT. Pop 60. A p o and village, first settled in 1900, on the Yukon River, 300 miles (by winter trail) w of Fairbanks, the nearest banking point.

LEWIS DAVID M, Postmaster and Gen Mdse

YUKON. See Fort Yukon.

BONDS, WARRANTS, MORTGAGES AND BANK STOCKS

SAFE DEPOSIT BOXES FOR RENT

WM. D. PERKINS & CO., BANKERS
SEATTLE, WASHINGTON

**"Isaacson's" NON-BREAKABLE Alaska
THAWING POINTS**

Seattle

Write for
Prices, Etc.

THE ONLY POINT ON THE MARKET
That Will Not Break
Hose Securely Fastened With Clamp and
Spring Washers

90%

*OF OUR ADVERTISERS RENEW THEIR
CONTRACTS WITH LITTLE IF ANY
SOLICITATION—ABOUT AS MUCH AS
SAYS THEY'RE SATISFIED DOESN'T IT?*

R. L. Polk & Co., Inc.
SEATTLE

LINK-BELT AND DODGE PRODUCTS CO.

SEATTLE, WASH.—PORTLAND, ORE.

ELEVATING, CONVEYING, POWER TRANSMISSION

CATALOGS ON REQUEST