

Polk's Publications

National

Banker's Encyclopedia (Directory) of the United States and Canada
 Architects' and Builders' Directory of Pittsburgh and Allegheny, Pa.
 Dental Register and Directory of the United States and Canada.
 Medical Register and Directory of the United States and Canada.
 Real Estate Register and Directory of U. S. and Canada.
 National Iron and Steel Blue Book.

City and County Directories and State Gazetteers

ALABAMA Birmingham Mobile Montgomery, and 6 others	GEORGIA Atlanta Augusta Macon, and 5 others	MICHIGAN State Gazetteer Ann Arbor Battle Creek Bay City Detroit Flint Grand Rapids Jackson Kalamazoo Menominee Saginaw, and 25 others	NEW MEXICO State Gazetteer	SOUTH DAKOTA State Gazetteer Aberdeen Brown Co. Huron Mitchell Sioux Falls
ALASKA Alaska and Yu- kon Gazetteer	HAWAII Honolulu	MINNESOTA State Gazetteer Duluth Minneapolis St. Paul and 16 others	NEW YORK New York City N. Y. C. Corpora- tion N. Y. C. Business Olean Watertown	TENNESSEE Memphis Nashville
ARIZONA State Gazetteer Phoenix and Salt River Valley Prescott and Yavapai County Tucson Yuma	IDAHO State Gazetteer Boise City and 8 others	MISSISSIPPI Columbus Hattiesburg Meridian Natchez Vicksburg	NORTH DAKOTA State Gazetteer Minot Ward County	TEXAS State Gazetteer Austin Beaumont Dallas Forth Worth Galveston Houston Waco, and 30 others
ARKANSAS State Gazetteer Fort Smith Hot Springs Little Rock, and 4 others	ILLINOIS Joliet Moline Rock Island Springfield	MISSOURI St. Joseph St. Louis	OHIO Ashtabula Bucyrus Cambridge Columbus Findlay Lima Newark Portsmouth Tiffin Toledo, and 12 others	UTAH State Gazetteer Ogden Salt Lake City, and 3 others
CALIFORNIA Fresno Long Beach Los Angeles Oakland Pasadena Pomona Sacramento San Diego San Jose, and 26 others	INDIANA State Gazetteer Evansville Fort Wayne Indianapolis Terre Haute, and 6 others	MONTANA State Gazetteer Anaconda Billings Butte Helena Missoula, and 12 others	OKLAHOMA State Gazetteer Enid Guthrie McAlester Oklahoma City Tulsa, and 5 others	WASHINGTON State Gazetteer Bellingham Everett Seattle Spokane Tacoma, and 22 others
COLORADO Boulder Colorado Springs Pueblo Trinidad, and 4 others	IOWA State Gazetteer Council Bluffs Davenport Des Moines Sioux City, and 6 others	NEBRASKA State Gazetteer Lincoln Omaha, and 4 others	OREGON State Gazetteer Astoria Eugene Portland Salem, and 10 others	WEST VIRGINIA State Gazetteer Huntington Wheeling, and 7 others
DELAWARE Wilmington	KANSAS State Gazetteer Lawrence Leavenworth Topeka Wichita, and 9 others	NEVADA State Gazetteer Reno and Sparks	PENNSYLVANIA State Gazetteer Altoona Erie Johnstown Lancaster Pittsburgh Scranton Wilkes-Barre York, and 32 others	WISCONSIN State Gazetteer Ashland Marinette Superior
DIST. OF COLUM. Washington	KENTUCKY Lexington	NEW JERSEY Jersey City Hoboken New Brunswick North Hudson		WYOMING State Gazetteer Cheyenne Laramie Sheridan
FLORIDA State Gazetteer Jacksonville Pensacola Tampa, and 11 others	LOUISIANA Alexandria Shreveport			
	MARYLAND State Gazetteer Baltimore City Cumberland			

R. L. Polk & Company, Inc.

ESTABLISHED 1870

DIRECTORY PUBLISHERS

Mailing Lists, Addressing and Mailing

Seattle, Washington

ASSOCIATE OFFICES

Detroit
New York
Chicago
St. Louis
St. Paul
Pittsburgh
Baltimore
Dallas
Houston

Portland
Minneapolis
Memphis
Atlanta
Columbus
Washington
Indianapolis
Toledo
Des Moines

Tacoma
Nashville
Salt Lake City
Jacksonville
Birmingham
Grand Rapids
Wheeling
Colorado Springs
Davenport

Spokane
Fort Wayne
Duluth
Butte
Sioux City
Ogden
Wilkes-Barre
Oakland

Los Angeles
Scranton
Boise
Little Rock
Pueblo
St. Joseph
Omaha
Topeka

Transportation Department



Representing the
Various Modes of Transportation
to and through Alaska and
Yukon Territory



When You Think Alaska—
Think Alaska Steamship Company

Summer Cruises That Are Different

ALASKA

The "Inside Passage" Cruise, ten to
twelve days—

The Prince William Sound Cruise,
sixteen to eighteen days—

The New Golden Belt Line Tour,
twenty-three to twenty-five days—

OFFERED ON AND IN CONNECTION WITH PALATIAL
AND COMMODIOUS STEAMERS OF THE

Alaska Steamship Company

For Sailings, Fares and Descriptive
Map Folder, Write to

ALASKA STEAMSHIP COMPANY

JOHN H. BUNCH, Traffic Manager

PIER 2

SEATTLE, WASH.



When You Think Alaska—
Think Alaska Steamship Company

If It's Transportation To or From

ALASKA

FREIGHT AND PASSENGERS

THE

Alaska Steamship Company

With its Fleet of 12 Modern Steamers

IS PREPARED TO SATISFACTORILY SERVE YOU

For Full Information, Rates,
Sailing Dates, Etc., Write to

ALASKA STEAMSHIP COMPANY

JOHN H. BUNCH, Traffic Manager

PIER 2

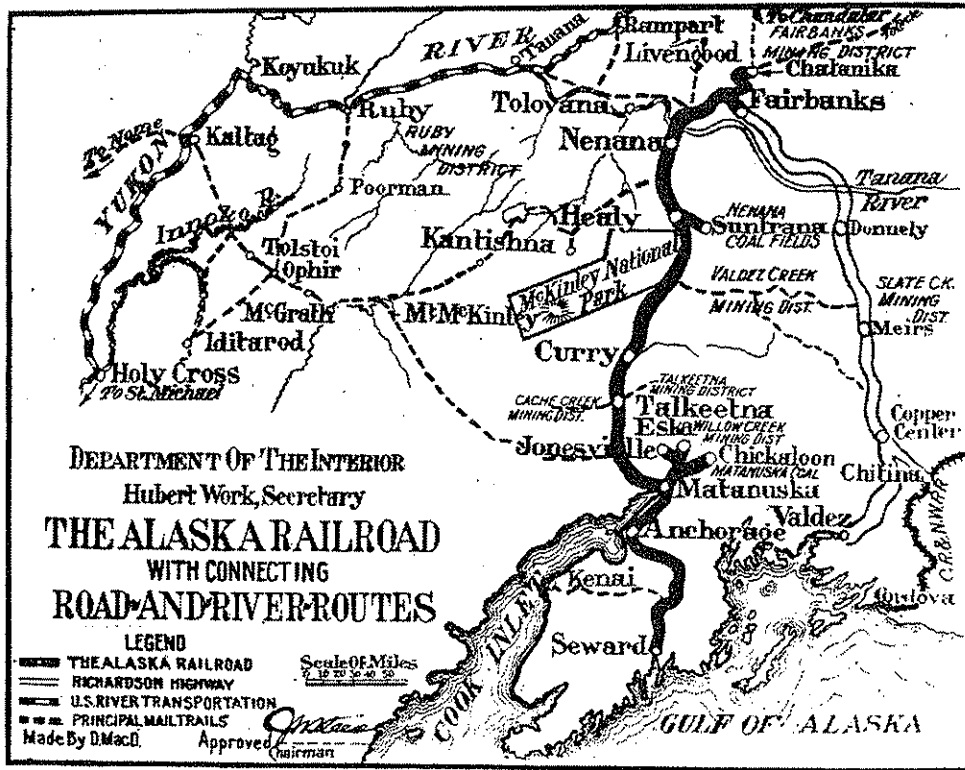
SEATTLE, WASH.

"Come to the Top of the World"

Southwestern Alaska, traversed by THE ALASKA RAILROAD, offers great inducements to those on pleasure bent. Best game and fish districts in the western hemisphere—moose, goat, sheep, caribou, brown and black bear; ducks, geese, ptarmigan and grouse; trout, grayling and white fish.

Peer of scenic attractions, Mount McKinley, monarch of North American mountains, visible for 300 miles along the railroad, towering 20,300 feet over a National Park of 2,600 square miles—an unexplored wilderness of wild life. Then there are Spencer Glacier, Nenana river canyon, and miles and miles of wild and magnificent scenery.

For those seeking a location there are gold, silver, copper, and coal in abundance; or wide valleys of agricultural lands, producing grain and vegetable crops; or trapping, fox farming, reindeer grazing, and many other industries. Look over the map below—a domain one-fifth the size of all the states.



Trains northbound leave Seward and Anchorage every Monday and Thursday at 8 o'clock; and southbound leave Fairbanks and Nenana every Tuesday and Friday at 7 o'clock. THE ALASKA RAILROAD also operates river steamers between Nenana and Holy Cross, leaving Nenana every Wednesday.

THE GOLDEN BELT TOUR—in over the railroad and out over the Richardson Highway—affords the tourist a diversity of travel and scenery and really enables the seeing of Alaska, 750 miles in 5 days.

For illustrated folder, or any other information, write THE ALASKA RAILROAD at any of the addresses given below:

Anchorage, Alaska.

422 Bell St. Terminal, Seattle, Wash.

6127 Interior Bldg., Washington, D. C.

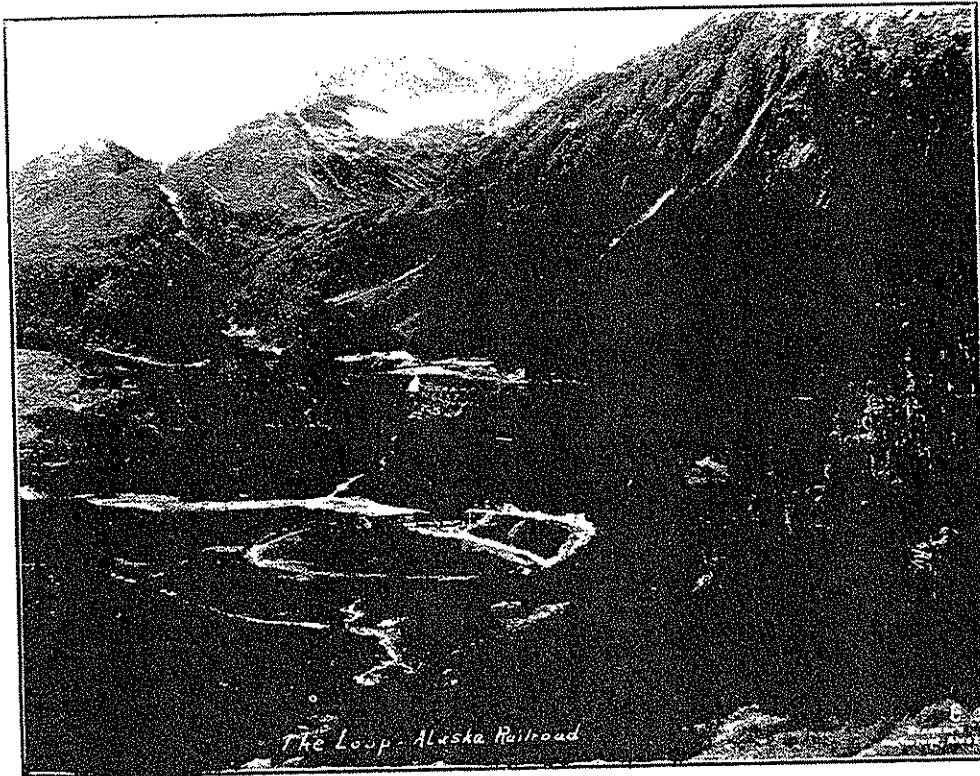
The People's Railroad "At the Top of the World"

You Can Take The Trip The President Took In Alaska

During the summer of 1923 the way has been blazed by the President of the United States and Mrs. Harding with party of 70; by 30 Congressmen and their wives; by the Brooklyn Eagle party of 40 men and 40 women; and by scores of other parties numbering from 2 to 25.

From the steamer's gang plank at Seward the traveler is now taken in safety and comfort by the United States Government over a standard gauge railroad through unexcelled scenery to the very heart of this last frontier of our nation at Fairbanks, away up near the Arctic Circle.

THE ALASKA RAILROAD, now completed, makes all this possible, with coaches, sleeping, dining, and observation cars, also a fine hotel at night stop-over at Curry, for the convenience of travelers.



The Loop - Alaska Railroad

Here in this northern wonderland during the summer the days practically have no ending. On the longest day a ball game is played in Fairbanks at midnight! Think of the opportunities thus afforded for long and delightful days of fishing, hiking, horseback riding, and sightseeing.

During the winter months the air is invigorating and conducive to the outdoor sports of skating, dog-sledding, skiing, etc., and the Northern Lights (aurora borealis) are worth going far to behold. Trips on THE ALASKA RAILROAD may be made with comfort any month of the year. The central portion of the railroad belt, for instance, boasts a climate drier than Colorado, warmer in winter than Montana, and as healthy as any place in the world.

Mountain and rushing torrent, tundra and glacier, and the vast silences of this wild wonderland are now opened to the enjoyment of mankind by means of THE ALASKA RAILROAD.

The Mount McKinley Route

ALASKA, ATLIN AND THE YUKON—THE INCOMPARABLE NORTHLAND

ALASKA, ATLIN and the YUKON are to our generation what California and the days of '49 were to the then generation. But the trail of '49 is but a memory, whilst in traveling to Dawson or Atlin one sees not alone many evidences of the memorable rush to the Klondike and here and there the old trail, but the very route followed is that taken by these mad seekers for gold.

“Men from the sands of Sunland;
Men from the woods of the West;
Men from the farms and the cities,
Into the Northland we pressed.
Gray beards and striplings and women,
Good men and bad men and bold,
Leaving our home and our loved ones,
Crying exultingly—Gold!”
—Robert W. Service.



INSPIRATION POINT

GENERAL INFORMATION

“They suffered, starved and triumphed together. They mingled their sorrows and their joys, their hopes and their ambitions. And while fortune frowned on many, yet to others she gave her sweetest smile. And in the hope that they might some time be the favored ones, the less fortunate were inspired with that grim determination to win, that faith and confidence that are today attributes of the Alaskan and are the ‘prophecy of a Mighty Empire to be.’”

“Since that time, however, the scene has changed: palatial vessels ply the waters of the Inside Passage; the iron trail of the White Pass & Yukon Route now follows in the very footsteps of these hardy pioneers;

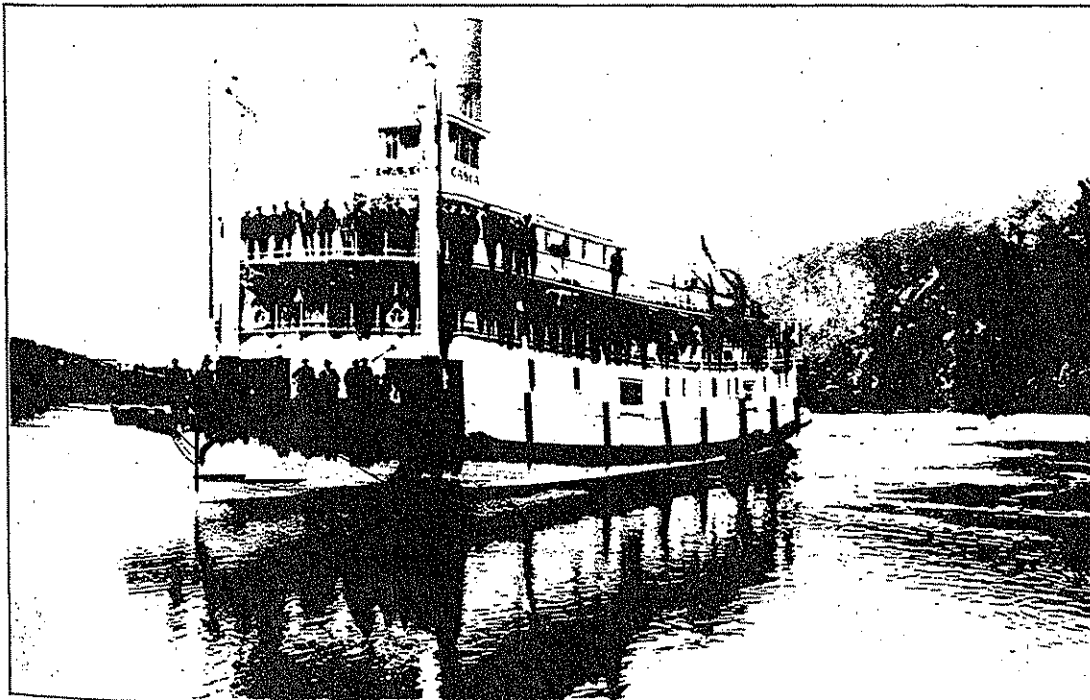
river steamers of the most modern type traverse the mighty Yukon and its tributaries for over three thousand miles; lake steamers, whose speed and comforts equal those of the ocean vessels, sail the waters of Lake Atlin, the beauty spot of the world."

There is probably no trip in the world so unusual—so interesting—so intensely worth while as that to Alaska, Atlin and the Yukon. Every mile is of vivid interest.

OVER THE WHITE PASS

The ride by rail over the coast range is thus interestingly described by John J. Underwood in his book—"Alaska—An Empire in the Making:"

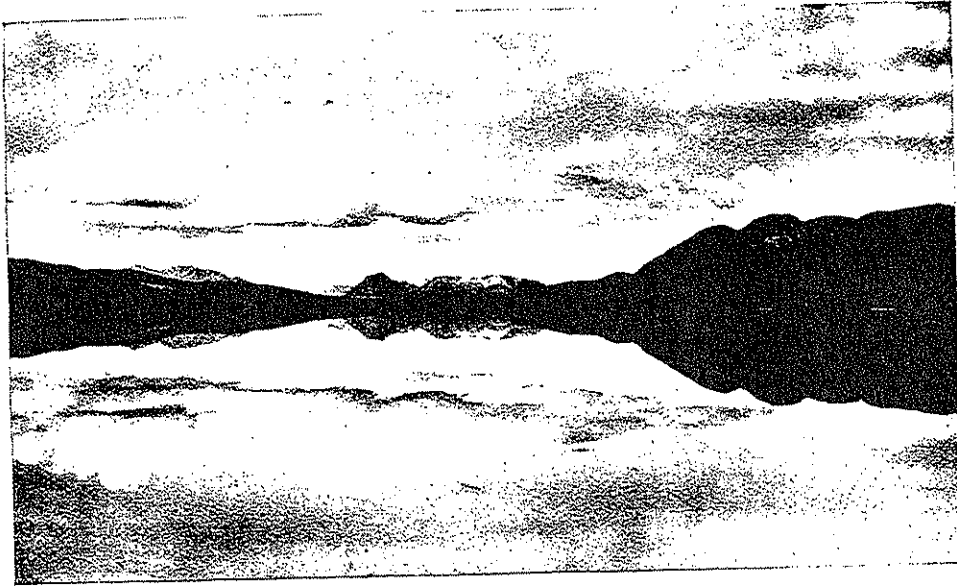
"This road * * * is one of the greatest engineering feats in the world. A trip over it is one to be remembered. It is full of thrills from the time the train enters the Skaguay River Valley till the top of the summit is reached. The austere mountains above, the flower-bestrewn valley below, make the journey a most captivating one. The train at times glides along the side of a sheer wall, with a cliff of rock hundreds of feet high on one side and the dark depths of an abyss on the other. The rocks jut out at sharp angles from the precipitous wall on the side of the roadbed and it appears as though the speeding cars must dash over the cliffs, but they swing around a curve and the train continues on its sinuous ascent. Water that is hungry green and later white with foam is seen here and there all along the route, and in one place, just beyond a dark tunnel, a very high bridge has been thrown across a



STEAMER "CASCA"

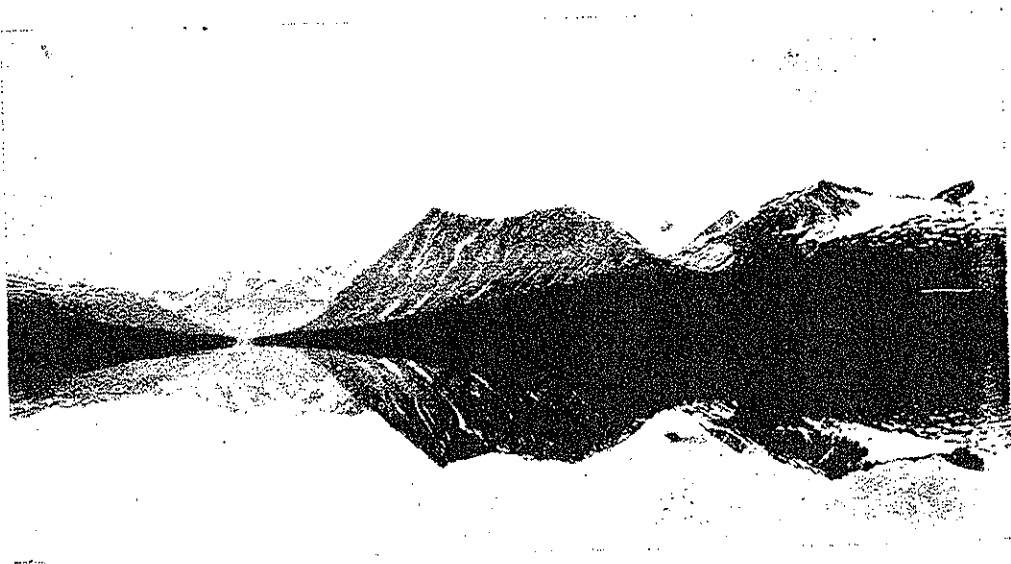
chasm at the bottom of which rages the Skaguay River crashing over the boulders to the sea."

Along the shores of sun-kissed lakes and mountain streams, banked by great masses of fireweed, larkspur, asters, marguerites and other wild flowers, the train continues on its way until the upper end of Lake Bennett is reached—and here is the now deserted town, also named Bennett.



LAKE BENNETT

For twenty-seven miles the railway follows the ever-winding shores of this lake, the rose-colored mountains on the opposite side rising sheer out of the water to a height of 5,000 feet or more. The ride along the shores of this beautiful Northland lake is one long remembered. En route the 60° of north latitude is crossed—the boundary between British Columbia and the Yukon Territory.

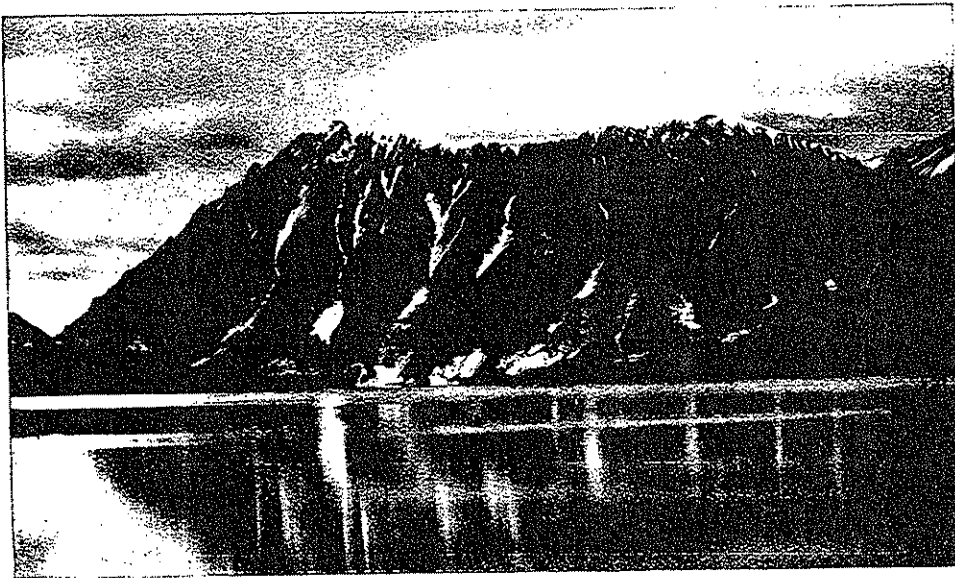


LAKE ATLIN

At the foot of Lake Bennett is Carcross—called by the Indians, “the place where the Caribou cross.” Here the train crosses the most northerly swing bridge on the American continent. Carcross is the transfer point for the Atlin Lake region.

TO THE ATLIN LAKE COUNTRY

The prospector's ceaseless quest for gold and his finding it has resulted in much of the scenic grandeur on this continent being made known. And the discovery of gold in the Atlin district has added a new wonderland—a lake country of incomparable beauty and grandeur. “The Beauty Spot of the World,” several travelers have called it, and, indeed, it is—and more, too.



CATHEDRAL MOUNTAIN

Continuing the trip by rail from Carcross, following more rivers and passing little lakes, the train stops at Miles Canyon. From here the passenger is given a view of this intensely interesting and historic gorge. About five miles beyond, and the trip by rail comes to end at White Horse, 111 miles from Skaguay, on the Lewes or Fifty Mile River—the headwaters of the Yukon. Connection is made here with the steamers of the White Pass & Yukon Route for Dawson.

THE VOYAGE TO DAWSON

From White Horse to Dawson is a sail of 461 miles and takes about forty hours. But it is a voyage that is unique—different from any you may have taken before. To begin with, it is on one of the world's great rivers, and, too, it is farther northward than any river trip on this continent, if not in the world.

There are many points of interest on the voyage. Lake LeBarge, made famous by Robert Service's ballad, “The Cremation of Sam McGee;” the tortuous Thirty-Mile River, where navigation in this North-

land is seen at its best; Cassiar bar, where gold placer mining was first done in the Yukon country in the early 80's and up on the mountain side near by lies buried one of the discoverers; Tantalus Butte—now to the left, now to the right, sometimes ahead and again astern; Five Finger Rapids, Rink Rapids, Fort Selkirk, near the site of the old Hudson's Bay Post, destroyed by the Indians in 1851; Victoria Rock, so named on account of resembling the profile of Queen Victoria; the Pelly Ramparts and other interesting points.

The Five Finger Rapids are of more than ordinary interest. Here the river narrows. Five huge hulks of rock rise sheer. The river rushes between them. The steamer is headed for the middle "finger." To the passengers it appears the boat is surely going to hit one of the rocks, but to their great relief the boat, guided by the hand of the skillful pilot, "straightens out" and the Five Finger Rapids are astern. Shooting these rapids is a thrilling experience.



DEAD HORSE GULCH

WHITE PASS & YUKON ROUTE

Executive and Accounting Departments

F. C. Elliott, President.....Conway Building, Chicago, Ill.
 H. Wheeler, General Manager.....Alaska Building, Seattle, Wash.
 G. H. Miller, General Auditor.....Skaguay, Alaska

Traffic Department

J. L. Burnside, General Agent.....509 Alaska Building, Seattle, Wash.
 G. B. Edwards, General Agent.....Dawson, Y. T.
 J. G. Blanchard, District Passenger Agent.....Skaguay, Alaska
 Miss L. Zwergel, Tourist Agent.....1729 Conway Building, Chicago, Ill.
 J. H. Rogers, Agent.....Skaguay, Alaska
 J. A. Fairborn, Agent.....Mayo, Y. T.
 E. J. Farr, Agent.....211 Winch Building, Vancouver, B. C.
 J. Lipscombe, Agent.....Atlin, B. C.

Booklets, folders and other literature, also information as to rates, service, sailings, etc., promptly furnished upon application to any of the above mentioned officials of the Traffic Department.

POLK'S YUKON TERRITORY DIRECTORY 1923-24

MISCELLANEOUS INFORMATION

Yukon Territory is the official name for what is called by some the Canadian Yukon. Alaska is the western boundary, and on the south it adjoins British Columbia. On the north lies the Arctic Ocean, and on the east the district of Mackenzie, with the Rocky Mountains as the dividing line. The area is 207,076 square miles.

The Yukon Basin has been the scene of prospecting operations since the late seventies, principally on the bars of the Stewart River. In 1896, when George Carmack made his wonderful discovery on Bonanza Creek, near what is now Dawson, the real rush started. During 1897 and 1898 thousands flocked here, drawn by the lure of gold, and the Royal Northwest Mounted Police estimated the population of the Territory at not less than 50,000.

After the great rush this population dwindled until now the Territory contains about 5,000 people. This is a permanent population, however, composed of people who are working hard to further the growth of the Territory.

The Territory is now steadily progressing in mining, the methods of the early prospectors have given way to more scientific and economical practices. Several large companies are now engaged in mining by hydraulic processes and by dredges, working over the early diggings. The gold yield for the year ending March 1, 1922, the latest available official figures, was \$1,231,000, while about \$700,000 in other minerals was produced. The total quantity of gold produced in Yukon Territory now reaches the enormous sum of over \$200,000,000.

Besides gold, copper is found in many places, notably near White Horse Rapids. Small amounts of nickel, chromium and antimony have also been found.

The forest trees consist of the white and black spruces, the aspen and balsam poplars and a species of birch. No pine or fir trees were noticed. The lower ridges and the slopes of the higher ones up to a height of 3,500 feet above the sea, are generally wooded, and stunted spruces occur sparingly on the highest points in the district. The valley flats are only partly wooded. Groves of spruce and poplar occur at intervals, but alternate with bare swamps and marshes too soft to support a forest growth.

The white spruce is the most important for general purposes in the district. It is usually small on the ridges, seldom exceeding a foot in diameter, but in the valley flats occasional specimens attain a diameter of over two feet and a large proportion of the logs cut for lumber measure

from nine to fifteen inches across. The supply for the mills at Dawson is obtained mostly from the flats and islands along the upper Yukon, and from the Klondike Valley, and is ample for all purposes for many years to come. The Klondike is bordered at intervals all the way from its mouth to the mountains by groves and small tracts of spruce forests of surprising size and quality considering the latitude, and supplies of well grown spruce timber are also available from all the larger tributaries of the Upper Yukon as well as from the main valley and can be easily and cheaply floated down to Dawson.

The supply of large timber on the producing creeks themselves is limited, but the bordering ridges are nearly everywhere, except on the higher points, clothed with an open forest of small spruce, birch and poplar ranging from a few inches to a foot or more in diameter. A portion has been destroyed by forest fires, but sufficient remains to furnish all the firewood and most of the lumber required for mining purposes for a considerable time.

The rapid inroads made by miners and prospectors on the timber of all the hills along the creeks tributary to the Klondike threatened at one time to create a famine in the matter of fuel. These fears, however, were soon dispelled by the discovery of a good quality of bituminous coal in several sections of the country, up as well as down the Yukon from Dawson. These several mines proved themselves to be more valuable than any gold mine, and with the advent of capital and machinery were soon opened up and made productive. The result is that today Dawson has a number of large coal yards with supplies on hand that should carry the community through the severest possible winter if snowed up and unable to get out for wood. The price of coal at Dawson is low when compared with the cost of other commodities in the country, as well as the cost of production.

There is no fear of a shortage of wood for fuel, as the upper river sections of the Yukon is known to be filled with dense forests of fine timber, good for lumber as well as fuel, and which will take several generations to exhaust.

Agriculture is rapidly coming to the fore. While the more tender vegetables cannot be raised, extensive quantities of oats, flax, barley, rye and turnips are grown, while sufficient potatoes are raised to take care of the domestic demand. Over 30,000 square miles are available for agricultural purposes.

The climate of Yukon Territory is one of the most healthful to be found anywhere. While the winters are long and cold, they are not severe, due to the absence of high winds and storms, and to the fact that it is a dry climate, the precipitation being only 15 inches annually. Spring and summer are delightful. From the middle of May to the first week in August it is "The Land of the Midnight Sun," with no darkness, warm pleasant days, and delightfully cool nights.

The Yukon, the largest river of the North, and the fifth largest in North America, is the principal means of transportation.

The White Pass & Yukon Railway makes connection with tidewater at Skagway, Alaska, and runs to White Horse, 111 miles north. From here steamers run down the Yukon to Dawson, 461 miles, through some of the most diverse and interesting scenery in the world. Many other rivers are navigable, and afford a cheap means of transportation to many outlying communities.

Royal Canadian Mounted Police

Commander Yukon Territory—E Telford
 Inspector Dawson—Richard Field
 Inspector White Horse—Wm J Moorhead

The Royal Canadian Mounted Police force of the Yukon Territory consists of fifty officers and men with outposts at the following places—Carcross, Forty Mile, Granville, Keno Hill, Mayo, Summit and White Horse

Territorial Court

Court sits every day except Saturday and Sunday between 1st and 25th of each month at Dawson

Members Yukon Council

White Horse—Robert Lowe (speaker)
 Mayo—J E Ferrell
 Klondike—W E Currie
 Clerk of Council—J A H M Maltby

Mine Recorders and Recording Officers

Dawson—P M Kelly, R L Gillespie
 Selkirk—Wm Schofield
 Duncan (Mayo)—D R McLennan, F J Berton
 White Horse—Wm James

Yukon Territorial Government Officials

Commissioner—Hon Geo P MacKenzie
 Territorial Treasurer—J A H M Maltby
 Territorial Secretary—J A H M Maltby
 Supt Works and Buildings—Jas McNeill
 Medical Health Officer—W E Thompson
 Chief Preventative Officer—E S Ironside
 License Inspector—J A H M Maltby

Federal Government Officials

Commissioner—Hon Geo P MacKenzie
 Comptroller—G A Jeckell
 Legal Advisor and Public Administrator—John Black
 Collector of Customs—Alexander Forrest
 Crown Prosecutor—Chas E McLeod
 Clerk of the Territorial Court—John Black
 Asst Clerk of the Territorial Court—H G Blankman
 Sheriff—Geo Brimston
 Crown Timber and Land Agent—Hon Geo P MacKenzie
 Indian Agent—John Hawksley

ALPHABETICAL LIST OF CITIES AND TOWNS

AISHIHIK VILLAGE. A native settlement on the Dalton trail and Aishihik Lake, 90 m s of Pelly, the nearest trading post, and 70 nw of Champagne, the nearest p o.

ALBERTA. A roadhouse and stage station on the Stewart River and on the White Horse-Dawson winter trail, 103 m se of the latter, banking point, and 73 nw of Pelly, nearest p o

ALKI CREEK. A mining settlement on a creek of the same name, 20 m se of Dawson, the banking point. Hunker is the p o.

ARLINGTON ROADHOUSE. A roadhouse 7 m e of Dawson, the banking point and p o, on the Granville road.

BAKER. A mining settlement on a creek of the same name near Dawson, the banking point and p o.

BARKER CREEK. A mining settlement on a creek of the same name, a tributary of the Stewart River, 20 m from its mouth, 90 s of Dawson, the nearest banking point, and 2 below Scroggie Creek, the p o.

BARLOW. A roadhouse on the Stewart River, 85 m above its mouth, at its confluence with the McQuesten River, 95 cross country se of Dawson, the banking point, and 40 ne of Black Hills, its nearest p o.

BEAR CREEK. A mining settlement on a creek of the same name, a tributary of the Klondike River and on the Granville road, 6 m e of Dawson, the banking point and p o. Telephone connections and daily stage to Dawson. Mail semi-weekly.

BEAR CREEK. A roadhouse on a creek of the same name near its confluence with the Dezadeash River, and on the White Horse-Kluane trail, 110 m w of White Horse, the banking point, 50 w of Champagne, the nearest p o.

BIG SALMON. A trading post and telegraph station on the Yukon River at the mouth of the Big Salmon River, 100 m n of White Horse, the nearest banking point, and 50 se of Carmacks, the nearest p o. The center of a district which includes the north and south forks of the Big Salmon River, Moose, May, Fish, and Bear creeks and numerous other tributaries, all of which show rich gold deposits.

BISHOP CREEK. A station on a creek of the same name and on the White Horse-Dawson winter trail, 32 m s of the latter, the banking point, and 7 s of Radford, the nearest p o.

BLACK HILLS. (For names see Teritorial Alphabetical List.) A p o and mining settlement on a creek of the same name, a tributary of the Stewart River, and on the White Horse-Dawson winter trail, 56 m (air line) se of the latter, the nearest banking point. Wells Fargo & Co express. Dominion Telegraph Service. Stage communication weekly to Dawson and White Horse during open season of navigation and semi-weekly during closed season.

BONANZA. Pop 100. A disc p o and mining settlement, also known as Grand Forks, first settled in 1897, at the junction of Bonanza and Eldorado creeks, and on the White Horse-Dawson winter trail, 14 m s of the latter, the p o, banking and shipping point. The town is lighted by electricity from the Dawson Electric Light & Power Co's plant at Dawson. Yukon Telephone Syndicate connections with Dawson.

BRAEBURN. A roadhouse on Klusha Creek and stage stop on the White Horse-Dawson winter trail, 85 m nw of the former, its nearest banking point, and 45 se of Carmacks, the nearest p o.

BRITANIA CREEK. A mining settlement on a creek of the same name, a tributary of the Yukon River, 3 m above the mouth of Thistle Creek. The nearest p o is Stewart River.

BURWASH CREEK. A mining settlement on a creek of the same name, a tributary of the Kluane River, 10 m w of Lake Kluane, 190 nw of White Horse, banking point and nearest p o.

BUXTON MISSION. A settlement on the Yukon River, 52 m nw of Dawson, the banking point. Forty Mile is the p o name.

CALCITE. Pop 20. A steamboat landing on the Yukon River, 55 m s of Dawson, the banking point, and 15 nw of Stewart River, the nearest p o. Quartz mining is the principal industry.

CANYON. A flag station on the W P & Y Route, 106 m n of Skagway, Alaska, 5 m s of White Horse, nearest banking point and p o.

CANYON. A roadhouse on the Aishihik River at its confluence with the Dezadeash River, and on the White Horse-Kluane trail, 80 m w of White Horse, the banking point, and 20 w of Champagne, the nearest p o.

CANYON CITY. A mining settlement on the White River near the mouth of the Generic River, 225 m s of Dawson, the banking point, and 45 s of Stewart River, the nearest p o.

CARCROSS. (For names see Territorial Alphabetical List.) Called Caribou by the White Pass & Yukon Route; name changed to Carcross by p o in 1904. A station on the W P & Y R, 42 m s of White Horse and 67 n of Skagway, Alaska, both banking points. A number of very rich quartz mines are being operated within a few miles of here. Carcross is the transfer point for the Atlin mining district and is fast becoming known among tourists and sight-seeing parties as presenting some of the most beautiful scenery on the continent. Has an Anglican church, good general store and one of the finest hotels in the North. Telg, W P & Y R and Dominion Telegraph Service.

CARIBOU. A mining settlement, also known as Dominion, on Dominion Creek, a tributary of the Indian River, and on the Dawson-Granville road, 30 m se of Dawson, the nearest banking point.

CARIBOU. A station, also known as Caribou Crossing, on W P & Y Route, 67 m n of Skagway, Alaska, and 44 s of White Horse, the banking point. Carcross is the p o name.

CARIBOU CROSSING. Known also as Caribou. P o name is Carcross.

CARMACKS. (For names see Territorial Alphabetical List.) Pop 75. A p o, also called Tantalus, first settled in 1885, on the Yukon River at the mouth of the Nordenskiold River, and on the White Horse-Dawson Winter trail, 131 m s of Dawson, banking and supply point. W F & Co Exp. Dominion Telegraph Service.

CARR GLYNN. A telegraphone flag station on the Macrae Spur of the W P & Y Route, 6 m se of Pueblo, 5 nw of Macrae and 13 sw of White Horse, the nearest banking point and p o.

CHAMPAGNE. (For names see Territorial Alphabetical List.) A p o and trading station on the White Horse-Kluane trail, 60 m w of White Horse, the banking and supply point. Has an Anglican church. Mining and trapping are the principal industries. Stage semi-monthly to White Horse, and monthly to Kluane.

CHECHACO HILL. A mining settlement on Bonanza Creek near Dawson, the banking point and p o.

CHICO. A station on the winter trail from Lower Labarge to Carmacks, its nearest p o, 30 m n of the former.

CLEAR CREEK. A mining settlement on Clear Creek, near its confluence with the Stewart River, 110 m above its mouth, 150 se of Dawson, banking point, and 35 ne of Black Hills, its nearest p o.

COAL CREEK. A mining settlement on a creek of the same name, a tributary of the Yukon River, 50 m nw of Dawson, the banking point, 11 e of the Yukon River and 6 n of Forty Mile, the nearest p o. The coal mines of the Northern Light, Power & Coal Co are located here.

COFFEE CREEK. A steamboat landing, telegraph station and wood camp on a creek of the same name at its confluence with the Yukon River, 110 m s of Dawson, the banking point, and 40 s of Stewart River, the nearest p o.

COMMERCIAL CENTER. A settlement on the south fork of the Big Salmon River, 50 m n of White Horse, the nearest banking point and p o, and 10 e of Eureka Landing, the shipping point on the Hootalinqua River. It is the commercial point for the Big Salmon mining district.

CONRAD. A mining settlement on Windy Arm, 54 m s of White Horse, the banking point, and 12 se of Carcross, the nearest p o.

COWLEY. A telegraph flag station on the W P & Y Route, 95 m n of Skagway, Alaska, 16 s of White Horse, nearest p o and banking point.

DALTON HOUSE. A settlement, also known as Dalton Post, on the Krotahini River and the Dalton Trail, 75 m nw of Skagway, Alaska, the nearest banking and shipping point and p o.

City of Dawson

DAWSON. Pop estimated 1000, is the capital and the largest city of the Yukon Territory, and is in the center of the famous Klondike placer district, which today has, together with other nearby tributary placer districts, almost as many people engaged actively in mining and trading.

Dawson has a fine large public school with kindergarten, intermediate and high school branches. Many graduates from the Dawson high school have entered Toronto, and other universities, and have been most highly commended for the splendid ground work received here. Dawson also has St. Mary's Catholic school. More than 200 children attend the two schools. The



CARIBOU SWIMMING YUKON RIVER

Administration building, Carnegie Library, Postoffice, and other public buildings would be a credit to any city. Most of the buildings are heated with steam or hot water. The city has many hotels with first class accommodations, and with running water, flush toilets and baths and other services the year round. The city has modern electric light, water and other public utilities. Telegraphic communication is had the year round by Dominion land wires, American government radio and cable service, and the White Pass Railway Company's land lines, giving communication with all points of the world, including chief portions of Alaska and the Yukon Territory. The city has fine wharves, splendid steamer service the full length of the Yukon, connecting on the south with rail line to Pacific tidewater. Modern saw-mills, telephone system, ship yards, machine shops, boiler works

and a large brewery are among the facilities. Six fine modern dredges, including the largest in the world, work within a few miles of Dawson. Some are at the very edge of the city, and have a capacity of 15,000 cubic yards of auriferous gravel daily. Numerous hydraulic works also are carried on. The city has four churches, including those of the Presbyterian, Catholic and Anglican. The city enjoys a large tourist business every season, and is the commercial and outfitting centre for extensive mining, fur trading and other operations. The fox raising industry has developed in the country recently, and many large fox farms with numerous fine animals are in full operation near the city. Greyling, salmon and other fishing, duck, grouse and other hunting, including that for moose, caribou, bear and mountain sheep afford splendid diversion summer and winter. Numerous large farms are under cultivation within a few miles of Dawson, and hundreds of tons of hay, potatoes, turnips and other root crops are raised and marketed in Dawson and on the steamers and at roadhouses. Wild and cultivated flowers grow in profusion. Dawson's gardens are the surprise of the many visitors. Lettuce, radishes, peas, cauliflower, cabbage and celery are particularly thrifty, and cannot be excelled for crispness and tenderness. Strawberries, raspberries, blueberries and other berries grow successfully, and the last two mentioned are gathered near here annually from wild vines in abundance. The gold shipments from Dawson annually aggregate approximately five million dollars. The city has many fine fraternal halls and homes, including those of the Masons, the Eagles, the Moose, the Odd Fellows and the Arctic Brotherhood. A modern, steam-heated picture theatre affords ample accommodations for the amusement loving public.

City Officials

Police Magistrate—Hon C D Macaulay
Clerk—John Black

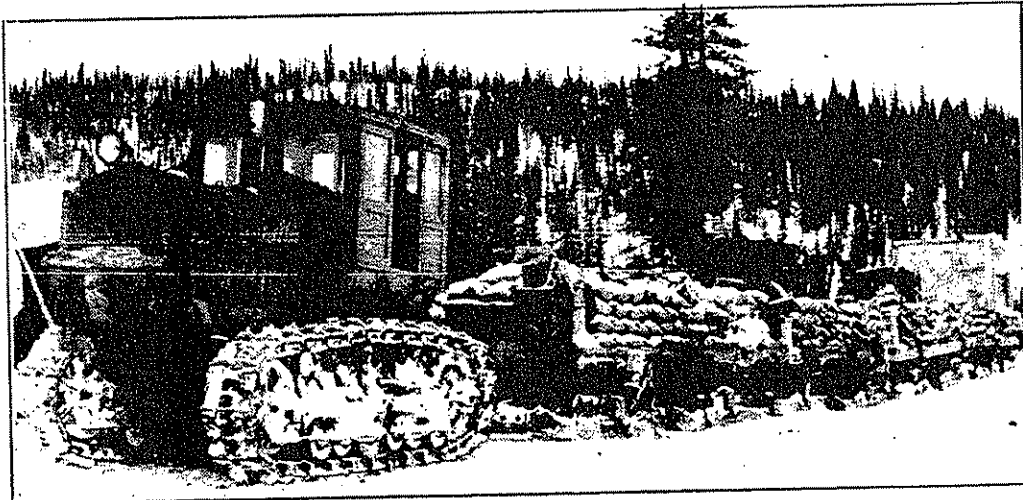
Firm Abbreviations

B & B Ltd—Burrall & Baird Ltd
R C M P—Royal Canadian Mounted Police
The N N W Corp Ltd—The New Northwest Corporation Ltd

POLK'S
Buyers' Guide
of
Dawson, Y. T.
1923-24



**Representing the Business,
Commercial and Manufacturing
Interests of the City**



Holt Caterpillar Tractor—"Hauling Scene Near Keno Hill"

The Holt Caterpillar Tractor, which has revolutionized the hauling system at the Silver Camp at Keno Hill, Mayo, in the Yukon Territory, by cutting hauling costs much below half that of any other methods.

**Only Authorized Holt Dealers in Yukon Territory
and Tributary Territory of Alaska**

Klondike Thawing Machine Co.

The Store That Sells Most Everything

GEO. F. JOHNSON, Propr.

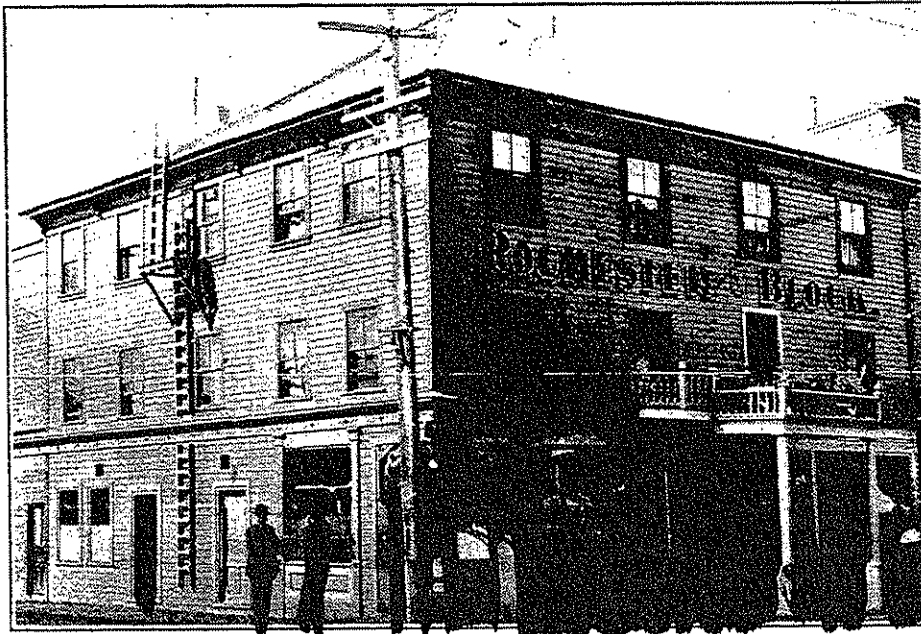
DAWSON, Y. T.

We are Authorized Ford Dealers and Distributors for all territory in Yukon, north of 30 miles south of 63 degrees latitude.

ROCHESTER HOTEL

ANDREW RYSTOGI, Proprietor

DAWSON'S LEADING TOURISTS' RESORT
DAWSON, Y. T.



EQUIPPED WITH ALL MODERN CONVENIENCES

The Famous Rochester Grill Run in Connection

COMFORTABLE SEVEN-PASSENGER TOURING CAR AT
THE DISPOSAL OF GUESTS FOR VISITING THE FAMOUS
PLACES OF INTEREST IN THIS NORTHERN WONDERLAND

THE ARCADE

The Feasting Place of Cheechakos and Sourdoughs,
Merchants, Miners, Tourists and All

NOTED FOR ITS DINNERS

And Complete a la Carte Service, Including Everything to Be Found in the
Most Modern City at Less Than Metropolitan Prices, and
Especially for Its

FAMOUS ARCTIC BIG GAME MEATS

Obtainable in Few Places in the World, and Served the Year Round, including:
TENDER CARIBOU CUTLETS, BIG JUICY MOOSE STEAKS AND ROASTS,
DELICIOUS MOUNTAIN SHEEP LOINS, SAVORY CUB BEAR CUTLETS;
ALSO ARCTIC TROUT AND GRAYLINGS, KLONDIKE GROUSE, PTARMIGAN,
YUKON SALMON, WHITEFISH AND FAMOUS ALL YUKON DINNER,

Comprised Entirely of Yukon Grown Products

Native Game and Meats Are Served at the Same Prices as Other Meat Orders—
No Advance Charge to Transients— Service Unexcelled.
Meals, 75 cents up, including Soup, Tea, Coffee,
Cocoa and Dessert without extra charge

OPEN DAY AND NIGHT—SUMMER AND WINTER

HARRY GLEAVES, Propr.

First Avenue, DAWSON, Y. T.

The Dawson Daily News

ESTABLISHED 1899

A four-page paper and is the oldest established newspaper in the world's most famous placer gold field, and is the only daily newspaper published in the Yukon Territory. It reaches every camp and cabin in the vast North, and has the confidence of a people who are noted as being among the world's most liberal buyers.

The Dawson Weekly News

A 12 to 24-page paper, 90 per cent reading matter, is the Official Gazette of the Yukon Territory and is read by practically every miner, prospector and trapper in Yukon, the Forty-Mile, Eagle and Circle Districts of Alaska

The Best Medium for Advertisers.
They Cover the Field Thoroughly

Advertising Rates on Application

DAWSON, Y. T.

JOHN McFARLANE

GENERAL CONTRACTOR

City Water Contractor

Express, Dray and Transferman

Teaming and Grading Contractor

DAWSON, Y. T.

The Rexall Store

W. M. CRIBBS, Owner

DAWSON



THE LEADING DRUG STORE OF THE YUKON TERRITORY

The ROCHESTER GRILL

DAWSON, Y. T.

HEADQUARTERS FOR

BIG GAME

MOUNTAIN SHEEP, MOOSE, CARIBOU,
CUB BEAR

AND ALL THE DELICACIES PROCURABLE
IN THE DAWSON MARKET

CHARGES MODEST

BERT BARBER, Manager

JOHN N. SPENCE GROCERIES

WHOLESALE AND RETAIL

OUTFITS

SUPPLIED MINERS, WOOD CHOPPERS, HUNTERS, TRAP-
PERS, LOGGERS, BIG GAME HUNTERS, AND
THE PUBLIC GENERALLY

FAMILY TRADE A SPECIALTY

Third Avenue, DAWSON, Y. T.

Phone 70

DAWSON ALPHABETICAL LIST OF NAMES

Adams Hugh M eng
 Albert Solomon miner
 Albini D miner THE NNW Corp Ltd
 Aldercroft Wm garage
 Allen Emma bkpr Northern Commercial Co Ltd
 Allen Irene J
 Allen Robt L tmbr insp
 Anderson Andw T lab Yukon Gold Co
 Anderson Edw
 Anderson Emily Mrs cigars
 Anderson Fred
 Anderson J A fishermn
 Ansett Wm J gard
**ARCADE CAFE (Harry Gleaves) Noted For Its Dinners and
 Big Game Meats (See p 478)**
 Archibald Jas foremn Yuyon Gold Co
 Ardern L lab Yukon Gold Co
 Arnold Alfred F miner
 Ashlund J lab Yukon Gold Co
 Atkins Clarence
 Atkinson C T miner
 Aurora House (Mrs Addie Skelton)
**B & F STORE (Joseph D Gadoua) Edward B Houghtaling Mgr,
 Cigars and Tobacco, Stationery, Periodicals, Magazines,
 Soda Fountain and Lunch Room, Confectionery**
 Bain W C constable RCMP
 Baird Andw pres Dawson Elec Light Co and Dawson City Water
 & Power Co Ltd sec-treas Burrall & Baird Ltd asst treas
 The New Northwest Corp Ltd
 Bakke Thos lab
 Ballentine Elizabeth Mrs
 Ballentine Martha wtrs
 Baltas Elizabeth Mrs nurse
 Bancroft E L winchmn Yukon Gold Co
BANK OF MONTREAL, E O Finlaison Mgr
 Banks Frank miner
 Baptist John miner The NNW Corp Ltd
**BARBER HERBERT, Garage, Cars for Hire, Mgr Rochester
 Grill**
 Barnes C Stuart clk
 Barnes George H
 Barrette F miner The NNW Corp Ltd
 Beaulieu Michl miner The NNW Corp Ltd
 Beckwith Richd trapper
 Bell Wm librarian Dawson Free Public Library
 Benton M W lab
 Berry Jas
 Berton Francis G mining recorder
 Best Jas miner
 Best Tremaine tlr
 Betts Henry W chf clk customs
 Betzner S B lab Yukon Gold Co

DAWSON—Continued

Bigg Walter
 Biggs A A
 Biggs Wm blksmith
 Bird Thos lab Yukon Gold Co
 Birely Louis D boat bldr
 Birmingham Claude
 Bishop Fredk W watchmn Yukon Gold Co
 Bittancourt J A foremn Yukon Gold Co
 Bizyak J lab Yukon Gold Co
 Black Chas B lawyer
BLACK GEORGE, Member of Parliament
BLACK JOHN, Legal Advisor and Public Administrator Yukon Territory, Clerk Yukon Territorial Court
BLANKMAN HAROLD G, Asst Clerk of the Territorial Court
 Bloomer Oscar lab Yukon Gold Co
 Blouin Arsene miner
 Blouin E Mrs cook Yukon Gold Co
 Blouin L A foremn Yukon Gold Co
 Bogen May Mrs clk
 Boich Michael lab Yukon Gold Co
 Bolder M miner The NNW Corp Ltd
 Bolduc J Edmund miner
 Booth Chas lab B&BLtd
 Bossuyt Chas meats
 Bossuyt Eva
 Boulay Antone
 Boullion A lab Yukon Gold Co
 Boutillier Chas F farmer
 Boutillier Wm
 Boyce Nina Mrs bakery
 Boyle Chas Mrs
 Bradshaw W R lab Yukon Gold Co
 Braga Dominick miner The NNW Corp Ltd
 Brennan Wm oiler The NNW Corp Ltd
BRIMSTON, GEORGE, Sheriff Yukon Territory
 Brindamour Mitchell
 Brine L H constable RCMP
 Brock Frank timber agt
 Broggio L welder The NNW Corp Ltd
 Broom Chas miner
 Brophe Chas
 Broughton Saml
 Brown Garnet watchmn B&BLtd
 Brown Geo L miner The NNW Corp Ltd
 Brown Jas miner
 Brown Jas miner
 Brown John lab Yukon Gold Co
 Brown Lucille
 Brown Mary E Mrs
 Brown Peter lab B&BLtd
 Bruce Wm miner The NNW Corp Ltd
 Bruhalski John caretkr

Buchanan J lab Yukon Gold Co
Buhro H lab Yukon Gold Co
Bundy Nellie (wid Dell)
Bunting Saml miner The NNW Corp Ltd
Burdick Edw C barber
Burich Philip lab B&BLtd
Burke John Mrs
Burkhard Chas F bakery
Burrall & Baird Ltd W H S McFarland mgr Andw Baird sec-
treas mining
Bussell Henry miner
Buteau Peter lab Yukon Gold Co
Byers Thos lab Yukon Gold Co
Cadieux Birdie (wid Jos)
Cale Geo T carp
Cameron Angus J miner
Cameron Chas driller Yukon Gold Co
Campbell Felix winchmn B&BLtd
Campbell Jas lab Yukon Gold Co
CANADIAN BANK OF COMMERCE, D C Thomson Mgr
Carlson C H foremn Yukon Gold Co
Carlson Emma C cook
Carlson Louis miner
Carlton Luke miner
Carr Fredk miner
Carroll Jas S
Carroll John M eng
Carruthers H B C pay clk RCMP
Carson Anna housekpr
Cascade Steam Laundry Gus Johnson mgr
Case John miner
Cedar Geo lab B&BLtd
Chapman Ernest driver Cascade Steam Lndy
Chapman H lab Yukon Gold Co
Chapman O lab Yukon Gold Co
Charlton Thos miner
Chevrette Eug lab
Chisholm Alex
Christian Science Hall
Church Ella Mrs hsekpr Royal Alexander Hotel
Clark Adelia Mrs
Clark-Hendra May Mrs
Clarke Fred W lab Yukon Gold Co
Clewley R H constable RCMP
Coates D H (Coates & Kastner)
Coates & Kastner (D H Coates O F Kastner) mail carriers
Cobb Margaret M Indy
Coffey Geo T res mgr Yukon Gold Co
Collette J B lab Yukon Gold Co
Colley Harry wldr B&BLtd
Collier Harry miner
Collins John A mining
Collins W F lab

DAWSON—Continued**COMMISSIONER YUKON TERRITORY, George P MacKenzie**

Conlin Isabelle (wid T P)
 Coombs H W cook Yukon Gold Co
 Cooper Frank cook Yukon Gold Co
 Corbeil Canille janitor
 Corps E J miner
 Corriveau H L lab Yukon Gold Co
 Cosgrove Frank
 Cowden Harry D miner
 Craig Benj F clk P O
 Craig Clarence W
 Craig Geo D shoemkr
 Craig John A
 Craig Robt
 Cramer Steve lab
 Creamer Philip S clk Northern Commercial Co Ltd
 Creamer Richd C
 Creamer Richd W clk The NNW Corp Ltd
**CRIBBS W M, "The Rexall Store", Drugs, Kodaks and Supplies,
 Stationery, "Liggett's Chocolates" and All of Service's
 Works (See p 479)**
 Cronin Daniel J carp
 Cross Alice F Mrs
 Cunningham Betsy Mrs Indrs Cascade Steam Laundry
 Cunningham Peter opr The NNW Corp Ltd
 Currie Daniel lab
 Currie Wm K lab B&BLtd
 Currie W E member from Klondike Yukon Council
 Curtis Chas S clk
 Cushman Hank trapper
 Cuthbert Wm J gro
 Cutting Mary H Mrs
 Dahl John miner
 Daly Jeremiah sergt in chg RCMP
 Daoust Felix farmer
 Davies Maggie
 Davin Thos E chkr
 Dawson Amateur Athletic Association F H Elliott mgr
 Dawson Curling Club
 Dawson City Water & Power Co Andw Baird pres A E Lee mgr
**DAWSON DAILY NEWS, Dawson News Publishing Co Publr
 (See p 478)**
 Dawson Electric Light & Power Co Ltd, Andw Baird pres A E
 Lee mgr
 Dawson Fire Department R C McLaren chief
 Dawson Free Public Library Wm Bell librarian
 Dawson Hardware Co (M H Jones)
**DAWSON NEWS PUBLISHING CO, C R Settlemier Editor, O
 F Kastner Mgr, Publishers Dawson Daily News (See p 478)**
 Dawson Public School
 Dawson Thos miner

Day Michl miner
DeLage J miner The NNW Corp Ltd
DeLage Wm opr The NNW Corp Ltd
DeLagrave Dolor tlr
Deroches J miner The NNW Corp Ltd
DesBrisay John lab Yukon Gold Co
DesBrisay Paul miner The NNW Corp Ltd
DesLeuriers John B clk
DEVER ARTHUR H, V-Pres Dawson News Publisher Co
Devig Nick lab Yukon Gold Co
Devine Alice Mrs
DeWolfe Percy C mail carrier
Dickson H G (Dickson & Dickson)
Dickson T A (Dickson & Dickson)
Dickson & Dickson (H G and T A Dickson) surv
Dieo Peter cook Yukon Gold Co
Dillon Jas tmstr
Dines John musician
Diven Alice M Mrs cook Yukon Gold Co
Dixon Harry
Dixon John H mach
Dixon Thos
Dogue H wldr The NNW Corp Ltd
Dominion Telegraph Service
Donald J A mgr Northern Commercial Co Ltd
Donohue Nicholas J
Donovan Timothy carp
Doran Edw F foremn Yukon Gold Co
Dorr S M city circulator Dawson News Publishing Co
Douglas Alex
Douglas Walter miner The NNW Corp Ltd
Doyle Thos
Drabeson J lab
Drugan Chas lab
Drugan Thos lab Yukon Gold Co
Drugan Wm lab Yukon Gold Co
Dubois A dredgemaster B&BLtd
Dubois Dona Mrs (Occidental Hotel)
Duckworth Robt lab Yukon Gold Co
Duffy Edw miner
Dugoff Thos miner
Dunlap Ambrose foremn Yukon Gold Co
Duroche Saml miner
Dzugaeff Thos mech Herbt Barber
Earsman Geo M miner
Eckersley John C fishermn
Edwards E J (Edwards & Winaut)
Edwards Geo B agt
Edwards & Winaut (E J Edwards Herbt Winaut) furn
Egan Jerry miner The NNW Corp Ltd
Ellengsen Earl A photog
Elliott Fred H mgr Dawson Amateur Athletic Assn
Elliott Wm

DAWSON—Continued

Elliott Wm H lab
 Elliott Wm J miner
 Ellis J E sergt RCMP
 Elwell Edw miner
 England Edw miner The NNW Corp Ltd
 Erickson H lab Yukon Gold Co
 Etzel Frank
 Evanglista Chas miner
 Farr Jas R flour and feed
 Farr Philip wood dlr
 Farrer Geo

FAULKNER GEORGE M, Dentist

Faulkner Victoria
 Felchner John cook Yukon Gold Co
 Fende Frank lab B&BLtd
 Fenning H miner The NNW Corp Ltd
 Fenton F M supt Yukon Gold Co
 Ferguson Wm N driver
 Ferrell J E member from Mayo Yukon Council
 Field Richd insp
 Fillion Arthur farmer
 Fillmore Leland oiler The NNW Corp Ltd
 Findley Geo H Rev pastor St Andrews Presbyterian Church
 Finlaison E O mgr Bank of Montreal
 Finley Wm lab Yukon Gold Co
 Finnie John miner
 Firth Thos A real est
 Flammand Felix miner The NNW Corp Ltd
 Fletcher John
 Fontain David wood chopper
 Forbes David
 Fordal G lab Yukon Gold Co
 Forest W trapper

FORREST ALEXANDER, Collector of Customs Yukon Territory

Forrest Emil eng
 Forrest Thos miner
 Fortier Ovid lab Yukon Gold Co
 Forward Dorman winchmn B&BLtd
 Foss Fred miner
 Fotheringham David H Steamer Klondike
 Fournier Archie dairy
 Fournier Jos (Summit Roadhouse)
 Fowlie Gavin carp
 Fox Richd A carp
 Francis Harry A wood dlr
 Francis Saml lab
 Franich Bros (Peter and Michl) restr
 Franich Michl (Franich Bros)
 Franich Peter (Franich Bros)
 Fransén Peter W winchmn The NNW Corp Ltd
 Fraser Earl lab

Fraser John R
Fraser Rodney E pntr
Fraternal Order of Eagles Hall
Frates F lab Yukon Gold Co
Frazer Jas miner The NNW Corp Ltd
Freeman Hotel (Mrs Minnie Whitmore)
**FRENCH MODEL STORE (Mme Emilie Tremblay) Dry
Goods, Millinery and Notions, Ladies' Ready-to-Wear Goods
King se cor 3d Av**
Frooks Andw miner
Frooks Belle Mrs
Frooks Fred miner
Fulton Geo E foremn
Furgeson W miner The NNW Corp Ltd
G W V A Hall
Gadoua Jos D (B & F Store) bakery
Gage Chas driver
Gagne Phileas Rev pastor St Marys Church
Gagnon H miner The NNW Corp Ltd
Gaudet Paul nurse St Marys Hosp
Gavenlock W miner The NNW Corp Ltd
Geck L foremn B&BLtd
Gibson David lab
Gilker J R carp
Gillespie Archie A clk Canadian Bank of Commerce
Gillespie Laura tchr
Gillespie Margaret student
Gillespie Richd L mining recorder
Gillis Alex J dentist
Gladwin B W foremn B&BLtd
GLEAVES HARRY (Arcade Cafe)
Glendenning H B constable RCMP
Gloslie Chris supt The NNW Corp Ltd
Godin David
Golden Jas lab Yukon Gold Co
Gordon A A (Occidental Hotel)
Government Ferry
Graham Frank miner
Granger J P gard St Marys Hospital
Grant Chris
Grant John H clk Northern Commercial Co Ltd
Grant Mary Mrs wall paper
Gravelle Alec lab Yukon Gold Co
Greenaway Thos miner The NNW Corp Ltd
Greenaway Walter
Gremie Geo miner The NNW Corp Ltd
Guder Fred oiler B&BLtd
Guillemette E miner The NNW Corp Ltd
Guilmette Donne baker J D Gadoua
Guite J P (Royal Alexandra Hotel)
Gulliford Dora (wid John)
Hagstrom Helmar miner
Hall Marjorie M tel opr

DAWSON—Continued

Halliday Milfred R foremn Yukon Gold Co
 Hamilton Hugh
 Hamilton Thos lab Yukon Gold Co
 Hammer Conrad
 Hand Arthur mach B&BLtd
 Hanna Jos mens furngs
 Hansen Odin
 Hansen John winchmn The NNW Corp Ltd
 Harding C miner The NNW Corp Ltd
 Hardy R lab Yukon Gold Co
 Harkins Geo
 Harold Mary F asst mgr Cascade Steam Laundry
 Harramura Fred cook B&BLtd
 Harrington John miner
 Haughton Bruce R

HAWKSLEY JOHN, Indian Agent Yukon Territory

Hawn Edw lab Yukon Gold Co
 Heggem Hans oiler The NNW Corp Ltd
 Hegstrom Hilmer opr Yukon Gold Co
 Henderson Grant miner
 Henderson H C assayer Yukon Gold Co
 Hendrickson G firemn Yukon Gold Co
 Herbster F J lab Yukon Gold Co
 Hickey Edw E lab B&BLtd
 Hickling Fred carp
HIGHLAND MARY MINE, John McFarland Pres-Mgr
 Hoggan Dorothy tchr
 Hoggan John master mariner
 Hoggan John W miner The NNW Corp Ltd
 Holbrook S C farmer
 Hollenbeck John roadhouse

HOLT TRACTORS, Klondike Thawing Machine Co Distributors

Hooker Jas E oiler B&BLtd
 Hooker Robt oiler The NNW Corp Ltd
 Horsfall Ada wtrs
 Horsfall Rose Indrs Cascade Steam Lndry
 Hoskings A J lab Yukon Gold Co
 Houghtaling Edw B mgr B&F Store
 Houghton Bruce miner
 Howes Geo foremn B&BLtd
 Huff Jerry billiards
 Hughes Jas guide
 Hughes Thos lab Yukon Gold Co
 Hull F lab Yukon Gold Co
 Hunter C F lab Yukon Gold Co
 Hutchinson Jas foremn B&BLtd
 Inkster Wm carp
 Irvin Saml miner
 Irving J G foremn Yukon Gold Co
 Iseman Harry B
 Jacobs A C lab Yukon Gold Co

Jackson Elmer miner
 Jeanneret Chas pres-mgr Jeanneret Jewelry Co Ltd
**JEANNERET JEWELRY CO LTD THE, Chas Jeanneret Pres-
 Mgr, Jeweler, Diamonds, Watches, Native and Outside Jew-
 elry, Silverware, Cut Glass and Novelties, Engraving and
 Jewelry Manufacturing**
JECKELL GEORGE A, Comptroller Yukon Territory
 Jensen Peter oiler The NNW Corp Ltd
 Johnson Chas driller Yukon Gold Co
 Johnson Eric lab B&BLtd
 Johnson Fred piper Yukon Gold Co
JOHNSON GEORGE F (Klondike Thawing Machine Co)
 Johnson Gus mgr Cascade Steam Laundry
 Johnson Swan lab B&BLtd
 Johnston Robt J barber
 Jolicoeur Godfroid farmer
 Jones Matthew H (Dawson Hardware Co)
 Jorgensen Morten tlr
 Joswold Ole blksmith B&BLtd
 Joy J B staff sergt RCMP
JUDGE YUKON TERRITORIAL COURT, Hon C D Macauley
 Juneau Edw winchmn B&BLtd
 Kaiser Chas hdw
 Kannabek Jos miner
 Karpunen P miner The NNW Corp Ltd
**KASTNER O F (Coates & Kastner) Mgr Dawson News Pub-
 lishing Co**
 Kaulback Chas lab B&BLtd
 Kawahara S cook The NNW Corp Ltd
 Kawakami Shuzaburo notions
 Kazinsky John P winchmn Yukon Gold Co
 Kazinsky John P jr lab Yukon Gold Co
 Kazinsky Louis lab Yukon Gold Co
 Keating Josephine smstrs
 Keeling Celia I Mrs baths
 Kellerman A linemn B&BLtd
 Kelly K G clk Bank of Montreal
 Kelly Philip M mine recorder
 Kemp Ernest miner
 Kennedy Duncan lab Yukon Gold Co
 Kennedy Jas lab B&BLtd
 Ker Marguerite Mrs Indrs Cascade Steam Lndy
 Kerr Geo linemn B&BLtd
 Kilbride Fred winchmn The NNW Corp Ltd
 King Walter lab
 Kinney Margaret nurse St Marys Hospital
 Kinsey Olive A student
 Kirby C miner The NNW Corp Ltd
 Kirk Alexandra Mrs
 Kirk John lab B&BLtd
 Kline John

DAWSON—Continued

KLONDIKE THAWING MACHINE CO (Geo F Johnson)
"The Store That Sells Most Everything", Sole Agents in
Yukon and Alaska for Holt Caterpillar Tractors, Ford Deal-
ers and Authorized Service (See p 476)

Knaus Fred lab B&BLtd
 Knudson P A (Royal Alexandra Hotel)
 Kondroski A lab B&BLtd
 Korbo C Mrs cook Yukon Gold Co
 Korbo John mach B&BLtd
 Korbo Martin tmstr Yukon Gold Co
 Korbo Mildred sten Yukon Gold Co
 Koslosky Jos lab
 Kotilainen W lab Yukon Gold Co
 Kuback Wm
 Kunze Bertha Mrs cook
 Kunze Bonnar electn
 Kunze Edw opr Yukon Gold Co
 Kunze J B lab Yukon Gold Co
 Kunze W E Mrs cook Yukon Gold Co
 Kviton Jos piper Yukon Gold Co
 Labbe Jean L
 Lachappelle J O phys pres-mgr Northern Fox Ranch Co Ltd
 Lamore U miner The NNW Corp Ltd
 Lamotte Francois
 Lamotte Jos wood chopper
 Langevin J B lab
 Langley Jas lab
 Lanoff Jas lab B&BLtd
 Larsen Emil lab Yukon Gold Co
 Larsen G miner The NNW Corp Ltd
 Lawson Thos cook RCMP
 Lean David sergt major RCMP
 Learmont Jack (Principal Hotel)
 LeBlanc W miner The NNW Corp Ltd
 LeBlond G miner The NNW Corp Ltd
 Leblond Stanley tmstr Yukon Gold Co
 LaBrosse J miner The NNW Corp Ltd
 Lee Alfred E mgr Dawson Electric Light & Power Co Ltd and
 Dawson City Water & Power Co Ltd
 Lee Allan E welder The NNW Corp Ltd
 Lee Geo miner The NNW Corp Ltd
 Lemieux Jos tmstr B&BLtd
 Lemoine Adlard driver J D Gadoua
 Lenez Peter lab
 Lennon John miner The NNW Corp Ltd
 Lennon R lab Yukon Gold Co
 Lepine Henry wood chopper
 Leroux T J lab B&BLtd
 Leroux Z lab B&BLtd
 Leslie Geo H miner
 Lindahl Lillian wtrs
 Lister Harry B foremn Yukon Gold Co

Lister Theo electn
Little Harry S trapper
Lloyd Jas C miner
Lnoff Jas mech Herbt Barber
Lord Gilbert lab Yukon Gold Co
Loveridge Wm E foremn Yukon Gold Co
Lowden Wm C lab The NNW Corp Ltd
Lowe Edw lab Yukon Gold Co
LOWE ROBERT, Speaker, Member from White Horse Yukon Council
Lowe Rufus C miner
Lowry Geo constable RCMP
Lowry Henry
Loyal Order of Moose Hall
Lude John mach Yukon Gold Co
Lund J miner The NNW Corp Ltd
Luyckens Louis miner
Lynch Thos miner The NNW Corp Ltd
McAndrew Patk trapper
McCain C H Mrs cook Yukon Gold Co
McCarter Alex Post Master
McCormick Saml livery stable
McCown Jean Mrs
McCoy Hattie Mrs baths
McCrimmon J miner The NNW Corp Ltd
McCroal Jas miner
McCuish Murdoch miner
McCutcheon John foremn Yukon Gold Co
McDonald Alex B supt The NNW Corp Ltd
McDonald Daniel H tmstr B&BLtd
McDonald Jas C lab Yukon Gold Co
McDonald Roderick winchmn B&BLtd
McDonnell C M foremn Yukon Gold Co
McDonnell Harry M dredgemaster The NNW Corp Ltd
McEdwards J miner The NNW Corp Ltd
McElfish Thos S
McFarland Warren H S mgr New North West Corporation Ltd
mgr Burrall & Baird Ltd
McFARLANE JOHN, Pres-Mgr Highland Mary Mine, City Water Contractor, City Garbage Contractor, Teaming and Grading Contractor, Express, Dray and Transferman (See p 479)
McGillivary John miner
McIver Murdoch J acct
McKay D J driller Yukon Gold Co
McKean A D lab B&BLtd
McKee J T dredgemaster Yukon Gold Co
McKenzie A lab B&BLtd
McKenzie Wm F clk P O
McKim S C liquor vender
McKinnon Malcolm oiler B&BLtd
McKinnon M J miner The NNW Corp Ltd
McLaren Elizabeth

DAWSON—Continued

McLaren Robt C chief Dawson Fire Department
 McLean Alex carp
 McLean D L lab Yukon Gold Co
 McLean J W 2d hd gds
 McLean R lab Yukon Gold Co
 McLellan Saml dredgemaster B&B Ltd
 McLennan John tmstr B&BLtd
 McLennan M miner The NNW Corp Ltd
 McLeod Agnes M (wid Chas R)
McLEOD CHARLES E, Crown Prosecutor
 McLeod David W miner
 McLeod Donald C acct B&BLtd
 McLeod H Gordon acct Bank of Montreal
 McMillan Daniel miner The NNW Corp Ltd
 McNeill F A lab B&BLtd
 McNeill Jas H supt works and buildings Yukon Territory
 McRae D M foremn Yukon Gold Co
 McRae M Mrs cook Yukon Gold Co
MACAULEY CHARLES D, Judge Territorial Court
 MacDougall Jas keeper Northern Fox Ranch Co Ltd
 Mack John tlr
 MacKeen Alex D miner
 MacKeen A P teller Canadian Bank of Commerce
MacKENZIE GEO P, Commissioner of the Yukon Territory
 MacLennan Alex M miner
 MacLennan John F drugs
 MacMillan W A A gen supt The NNW Corp Ltd
 Maddocks Edw dept mgr Northern Commercial Co Ltd
 Magnuson J L foremn Yukon Gold Co
 Magretta John miner
 Mahon Henry
 Majenpaa M miner The NNW Corp Ltd
 Malstrom Harold lino opr Dawson News Publishing Co
MALTBY JOHN A M H, Territorial Sec and Treas Yukon Ter-
ritory, Clerk of Yukon Council
 Manchester Donald lab Yukon Gold Co
MANCHESTER M D, Electrical Supt Yukon Gold Co
 Manuel Teddy miner
 Marcoux Jos driver
 Marcoux Napoleon tmstr Yukon Gold Co
 Marcus Frank lab The NNW Corp Ltd
 Marsh Chas L mining
 Marshall Wm miner The NNW Corp Ltd
 Martin L G nurse St Marys Hospital
 Martineau J miner The NNW Corp Ltd
 Masonic Temple
 Matheson Saml miner
 Mayer H W foremn Yukon Gold Co
 Mellish John lab Yukon Gold Co
 Mellish John M lab
 Mellon O lab Yukon Gold Co
 Melville Wm R

MEMBER OF PARLIAMENT Hon George Black

Mercier A miner The NNW Corp Ltd
 Merrill F lab Yukon Gold Co
 Meyer C H foremn Yukon Gold Co
 Miller H L meat ctr Waechter Bros Co
 Mills Chas W eng
 Moffat Geo blksmith Yukon Gold Co
 Moll Paul miner The NNW Corp Ltd
 Moon Geo L lab Yukon Gold Co
 Moore Chas F lab
 Moore Nora Mrs cook Yukon Gold Co
 Moore Wm A dredgemaster The NNW Corp Ltd
 Moore Wm H lab Yukon Gold Co
 Moquin Victor supt The NNW Corp Ltd
 Morgan J W
 Morgan Margaretta Mrs
 Morishige Frank cook B&BLtd
 Morlock Geo W barber
 Morrah Frank lab B&BLtd
 Morse Harry
 Morse R A watchmkr Jeanneret Jewelry Co Ltd
 Moskeland J E moat bldr
 Munro Daniel foremn Yukon Gold Co
 Murphy J C piper Yukon Gold Co
 Murphy Walter mech Yukon Gold Co
 Murray J R messr Canadian Bank of Commerce
 Murray Wm J firemn Northern Commercial Co Ltd
 Nacke H jeweler Jeanneret Jewerly Co Ltd
 Nadeau Fredk lab
 Naskedoff Geo lab Yukon Gold Co
 Nee Jos M
 Nelson Geo oiler The NNW Corp Ltd
 Nelson J M lab Yukon Gold Co

NEW NORTH WEST CORPORATION LTD, W H S Mc-Farland Mgr

Newman Thos winchmn The NNW Corp Ltd
 Nordling Hannah (wid Otto)
 Nordling Oscar lab Yukon Gold Co
 Nordling Paul lab Yukon Gold Co
 Nordstrom A J lab B&BLtd
 Norman C J harness mkr
 Norman Henry lab Yukon Gold Co
 Northern Commercial Co Ltd J A Donald mgr
 Northern Fox Ranch Co Ltd J O Lachapelle pres-mgr
 Oakden Wm blksmith
 O'Brien F miner The NNW Corp Ltd
 O'Brien J winchmn The NNW Corp Ltd
 Occidental Hotel (A A Gordon Mrs D Dubois)
 Odegard Carrie Mrs cook Yukon Gold Co
 Odegard O lab B&BLtd
 Odell Odin lab B&BLtd
 Odon Hans lab B&BLtd
 Ogburn Robt H supt Yukon Gold Co

DAWSON—Continued

Oglow Jas cigars and tobacco
 O'Keefe Michl wtr B&BLtd
 Oleson Anna P Mrs music tchr
 Oleson Ole driller Yukon Gold Co
 Oleson Richd A jeweler
 Olsen A oiler The NNW Corp Ltd
 Osborn Frank lab B&BLtd

OSBORN FRANKLIN H, Asst Territorial Sec and Treas Yukon Territory

Osborn Franklin H jr lab
 Osborn Owen
 Paddock Chas H
 Paddock Geo A
 Paddock Wm S greenhouse
 Pasquin Christopher N lab Yukon Gold Co
 Pastor Frank lab Yukon Gold Co
 Patton Jas miner
 Payson C C miner
 Peek Henry M miner
 Peltonen Frank shoemkr
 Penny Patrick
 Peter H E jeweler
 Peterson John miner The NNW Corp Ltd
 Peterson Michl firemn Yukon Gold Co
 Peterson P H firemn Yukon Gold Co
 Philip Chas S dry gds
 Pickering Thos miner
 Pierce Henry lab
 Pigeon S oiler Yukon Gold Co
 Pluth John tmstr B&BLtd
 Pohl Geo whse foremn B&BLtd
 Pontaletta P miner The NNW Corp Ltd
 Pool Jas A oiler B&BLtd
 Popovich Michl oiler Yukon Gold Co
 Poulin G oiler The NNW Corp Ltd
 Poulin Romeo lab
 Powell D E mach B&BLtd
 Powell Frank C acct Yukon Gold Co
 Price Eug lab Yukon Gold Co
 Price Louis

PRINCIPAL HOTEL (Jack Learmont)

Ransley Alfred janitor P O
 Ray Harry lab Yukon Gold Co
 Razee Nellie
 Rea Frank lab B&BLtd
 Reardon David miner
 Reardon Stephen carp Yukon Gold Co
 Redmond Chas lab
 Redmond Ernest J lab
 Redmond Margaret M
 Redmond Wm H lab Yukon Gold Co
 Rendell Wm J v-pres The NNW Corp Ltd

REXALL STORE THE (W M Cribbs) Drugs (See p 479)

Reynolds Geo C rancher
 Rice Fredk lab Yukon Gold Co
 Richardson W lab Yukon Gold Co
 Rickard Edw C gen mdse
 Risberg C A miner The NNW Corp Ltd
 Risco J miner The NNW Corp Ltd
 Ritzman Peter
 Rivers Chas
 Robertson Duncan C miner
 Robinson R C opr Yukon Gold Co

ROCHESTER GRILL THE, Herbert Barber Mgr, Headquarters for Big Game, Mountain Sheep, Moose, Caribou and Cub Bear (See p 480)**ROCHESTER HOTEL (Andrew Rystogi), Dawson's Leading Tourist's Resort, Headquarters for Big Game Hunters and Mining Men, Touring Cars and Automobiles for Hire (See p 477)**

Rogers Leland O mech Dawson Fire Dept
 Rosman John T
 Rossan Jos opr Yukon Gold Co
 Rosseau Amie oiler B&BLtd
 Rousseau Peter miner
 Roy Paul dredgemaster B&BLtd
 Royal Alexandra Hotel (J P Guite P A Knudson)
 Royal Canadian Mounted Police E Telford Commander Yukon Territory
 Ruiter Chas N
 Runacres E lab B&BLtd
 Rupe Margaret nurse St Marys Hospital
 Ryan David miner
 Rystogi Adam bakery

RYSTOGI ANDREW (Rochester Hotel)

Rystogi Frances
 St Andrew's Presbyterian Church Rev G H Findley pastor
 St Laurent Peter miner
 St Mary's Church (Roman Catholic) Rev Phileas Gagne pastor

ST MARY'S HOSPITAL, Sisters of St Anne in Charge

St Mary's School Sisters of St Anne in chg
 St Paul's Anglican Church
 Sampson Wm
 Samuelson Martin lab
 Samuelson S M clk Bank of Montreal
 Sando J miner The NNW Corp Ltd
 Sauer Geo lab The NNW Corp Ltd
 Sauer Jos wtr B&BLtd
 Saunders Danl tmstr B&BLtd
 Scherner Birdie W bkpr Waechter Bros Co
 Scherner Henry J mgr Waechter Bros Co
 Schink C E timekpr Yukon Gold Co
 Schofield Fanny
 Schubert Christopher lab Yukon Gold Co
 Schwartz J P carp RCMP

DAWSON—Continued

Scott Jane A Mrs nurse
 Scott Jos W tmstr
 Scougale Jas A dry gds
 Scougale John
 Seargent J cook
 Searle Edgar H
 Seeley Alex clk Northern Commercial Co Ltd
 Segbers Hiram B elec supt The NNW Corp Ltd
 Segbers J A (Yukonia Hotel)
 Seguin Alarie J dept mgr Northern Commercial Co Ltd
 Seguin John eng
 Semple Robt miner
 Sence L lab Yukon Gold Co

SETTLEMIER C R, Editor Dawson Daily News

Sharkey Owen foremn Yukon Gold Co
 Sharp Harry broker
 Shaw Wm miner
 Sibbald Geo lab Yukon Gold Co
 Sim Robt miner The NNW Corp Ltd
 Simmons Geo lab Yukon Gold Co
 Simons Louisa Mrs bakery
 Sinclair H miner The NNW Corp Ltd
 Sipkus John wood dlr
 Skelton Addie Mrs (Aurora House)
 Skelton Harry H driver Dawson Fire Dept
 Skistad Nels lab B&BLtd
 Skoropata Steve winchmn B&BLtd
 Sloane Sarah tchr
 Smith C miner The NNW Corp Ltd
 Smith Jonas lab Yukon Gold Co
 Smith Spurgeon W electn
 Smith Thos miner
 Solvig G (Westminster Hotel)
 Sorenson Wm lab B&BLtd
 Span Tony driller Yukon Gold Co

SPENCE JOHN N, Wholesale and Retail Grocer, Teas, Coffees and Spices, Smoked, Cured and Salt Meats, Canned Goods, Flour and Feed, Fruit and Vegetables (See p 480)

Starvis T wtr The NNW Corp Ltd
 Steers E E cook Yukon Gold Co
 Stephens Chas corporal RCMP
 Stepp Joshua E slsmn
 Stevens Geo lab
 Stevens John tmstr B&BLtd
 Stevenson Geo
 Stevenson John prospector
 Stingle Jos W eng Northern Commercial Co Ltd
 Stone Chas T
 Stone Michl lab
 Strathie Wm H (Yukon Sheet Metal Works)
 Stringer Isaac O Rt Rev bishop Yukon Anglican Church
 Sugyana Jas cook The NNW Corp Ltd

Sullivan A miner The NNW Corp Ltd
Sullivan Chas
Summit Roadhouse (Jos Fournier)
Sundeen Alex trapper
Sundlin J lab Yukon Gold Co
Svendson S foremn B&BLtd
Tani Geo cook Yukon Gold Co
Tarailom Nick oiler Yukon Gold Co
Tate Jas lab Yukon Gold Co
Taylor Albt B miner The NNW Corp Ltd
Telford Edw commander Yukon Territory RCMP
Tennant Chas I
Thomas Theo miner
Thompson Geo lab Yukon Gold Co
Thompson W E phys medical health officer Yukon Territory
Thomson D C mgr Canadian Bank of Commerce
Thornback Margaret Mrs
Thorne F lab Yukon Gold Co
Thurgood Ernest corp RCMP
Tilling Rose E
Totty Ada
Totty Benj missionary
Totty Chas student
Totty Martha
Townsend Alfred mach B&BLtd
Townsend H Emma
Townsend Turner N E florist
Townsend Wm miner
Trana Edw linemn B&BLtd
Tremblay Emilie (French Model Store)
Tretault Alfred h Front nr Albert
Tretsiak Josephine nurse St Mary's Hospital
Troberg Erick A mining
Troberg Ralph E student
Troberg Walter clk
Turcotte Geo miner The NNW Corp Ltd
Turnbull Archie miner
Turnbull John mining
Twirdall O lab B&B Ltd
Union Bakery (Conrad Hammer)
Upp D C auto repr
Vagliano Max wtr B&BLtd
Vale Anna housekpr
Vanzio Cicero blksmith Yukon Gold Co
Vernon Geo
Vesco J P (V Vesco & Son)
Vesco Vincent (V Vesco & Son)
**VESCO VINCENT & SON (Successors to Frank & Vesco),
Diamond Merchants and Manufacturers of Klondike Jewelry,
P O Box 435**
Vetterich Otto miner The NNW Corp Ltd
Vifquain Chas F clk
Vilbrun Henry miner

DAWSON—Continued

Waechter Brothers Co Henry J Scherner mgr meats
Walters J B electn
Warner Geo dredgemaster The NNW Corp Ltd
Watch Theo piper Yukon Gold Co
Watson Fred W lab Yukon Gold Co
Watson Geo constable RCMP
Watson G lab Yukon Gold Co
Waugh Elizabeth (wid Aaron)
Way Frank T
Welch B G foremn Yukon Gold Co
West J A boilermkr
Westerbrook Geo lab
Westminster Hotel (G Solvig)
White Jack lab B&BLtd
White Vincent P lab
Whiting A A lab B&BLtd
Whitmore Minnie Mrs (Freeman Hotel)
Wickman E M lab B&BLtd
Wickman Len foremn B&BLtd
Williams Alice M
Williams Geo N mining
Williams Jas miner
Williams Lyman lab Yukon Gold Co
Williams Wm winchmn The NNW Corp Ltd
Wilson Elizabeth Mrs
Wilson Emma L (Yukon Hotel)
Wilson Jas F mining
Wilson Thomas miner
Winaut Herbt (Edwards & Winaut)
Winklebeck Elsie Indrs Cascade Steam Laundry
Winram T J miner The NNW Corp Ltd
Wolfe Chas
Woodburn Edw A
Wright E L lab Yukon Gold Co
Wynen Jos miner The NNW Corp Ltd
Wynen Louise C Mrs dressmkr
Wyness Gladys tel opr
Wyness John
Yokada Y mach
Young C J constable RCMP
Yukon Gold Co Geo T Coffey res mgr
Yukon Hotel (E L Wilson)
Yukon Sheet Metal Works (Wm Strathie)
Yukon Telephone Syndicate Ltd Andrew Baird pres A E Lee
mgr
Yukonia Hotel (J A Segbers)
Zenier Chas lab
Zukoff Thos miner The NNW Corp Ltd

DAWSON DOME. See Moosehide Mountain.

DE WETTE. A flag station on the W P & Y Route, 84 m n of Skagway, Alaska, 27 s of White Horse, the nearest banking point, 17 n of Carcross, its nearest p o, and 5 s of Robinson Station.

DOME, THE. Elevation 4,250 ft. The nearest mountain in Klondike mining district. Noted for its midnight parties during the latter part of June to view the midnight sun, one of the many attractions sought by tourists.

DOMINION. A mining settlement and disc p o on a creek of the same name, a tributary of the Indian River, and on the Dawson-Granville road, 30 m se of Dawson, the nearest banking point and p o.

DONJEK. A roadhouse and trading post on a river of the same name at its confluence with the White River, the head of navigation on the latter, and on the Dawson-Chisana trail 162 m s of Dawson, the nearest banking point, and 60 s of Stewart River, its nearest p o.

DUBLIN GULCH. A mining settlement on a creek of the same name, 200 m e of the mouth of the Stewart River and 250 e of Dawson, the nearest banking point. Mayo is the nearest p o.

DUGDALE. A flag station on the W P & Y Route, 99 m n of Skagway, Alaska, 12 s of White Horse, the nearest banking point and p o, and 10 n of Robinson Station.

DUNCAN CREEK. A mining settlement on a creek of the same name, at its confluence with the Mayo River, a tributary of the Stewart River, 200 m e of the mouth of the latter, 250 e of Dawson, the nearest banking point, and 40 ne of Mayo, its nearest p o.

EAR LAKE. A flag station on the W P & Y Route, 107 m n of Skagway, Alaska, 4 s of White Horse, nearest banking point and p o.

ECLIPSE ROADHOUSE. A roadhouse $\frac{1}{4}$ m above the mouth of Hunker Creek, on the Dawson-Granville road, 10 m se of Dawson, the nearest banking point and p o.

ELDORADO CREEK. A mining settlement on a creek of the same name, 10 m s of Dawson, the banking point and p o.

ENSLEY CREEK. A mining settlement on a creek of the same name near Dawson, the banking, commercial point and p o.

EUREKA CREEK. A mining settlement on a creek of the same name, a tributary of the Indian River, 46 m s of The Forks and 4 m off the White Horse-Dawson trail. Mail weekly.

EUREKA LANDING. A station on the White Horse-Dawson winter trail and a steamboat landing at the head of navigation on the Hootalinqua River, 52 m n of White Horse, the nearest banking point and p o, 28 s of Hootalinqua and 10 w of Commercial Center.

FIVE FINGER RAPIDS. On the White Horse-Dawson River route on the Yukon River, 10 m s of Yukon Crossing.

FORKS, THE. A mining settlement at the junction of the right and left forks of Eureka Creek, a tributary of the Indian River. and on the White Horse-Dawson winter trail.

FORT CONSTANTINE. A fort on the Yukon River, 52 m sw of Dawson, the nearest banking point, and across the river from Forty Mile, the nearest p o.

FORT CUDAHY. See Forty Mile.

FORT RELIANCE. An abandoned fort on the Yukon River, 10 m n of Dawson, the nearest banking, commercial point and p o.

FORT SELKIRK. A telegraph station and trading post, also known as Selkirk, formerly an outpost of the R C M Police, on the Yukon River, 176 m se of Dawson, the nearest banking point, and across the river from Pelly, its p o.

FORTY MILE. (For names see Territorial Alphabetical List.) Pop 22. A p o and mining settlement, first settled in 1884, on a river of the same name at its confluence with the Yukon River, 52 m nw of Dawson, the banking point. Gold mining is the principal industry. Some very rich placer diggings are located on Chicken, Falls, Gate, Glacier, Herbert, Log Cabin, Miller and Wade creeks, all tributaries of Forty Mile River. It is a government telegraph station and has a blacksmith shop, general store, 2 hotels, roadhouse and Anglican Church. A Canadian customs office and a corps of the Royal Canadian Mounted Police are also located here. Wells Fargo & Co express. Dominion Telegraph Service. Stage weekly in winter to Eagle, Alaska and Dawson, Y T.

FORTY MILE. A mining settlement and district on a river of the same name, which lies both in the Yukon Territory and the Territory of Alaska. This was one of the first placer camps in the North and considerable mining is still carried on. The principal creeks are Chicken, Jack Wade, Squaw and Canyon. A village by the same name at the confluence of the Forty Mile and Yukon rivers is the nearest p o and shipping point, which is also 52 m nw of Dawson, the nearest banking and supply point.

FORTY-ONE MILE ROADHOUSE. A roadhouse on the Dawson-Glacier Creek trail, 41 m sw of Dawson, the banking point, and 19 ne of Glacier Creek, the nearest p o.

FOURTH OF JULY CREEK. A mining settlement on a creek of the same name in the Klouane mining district, 150 m w of White Horse, the nearest banking point and p o.

FRASER FALLS. A trading post at Fraser Falls on the Stewart River, 200 m e of its mouth, 270 e of Dawson, the nearest banking point, and 30 e of Mayo, the nearest p o.

GALENA CREEK. A mining settlement on a creek of the same name, one of the principal creeks in the Duncan mining district, 200 m e of the mouth of the Stewart River and 250 e of Dawson, the nearest banking point. Mayo is its p o.

GLACIER CREEK. (For names see Territorial Alphabetical List.) Pop 90. A p o and mining settlement on a creek of the same name, a tributary of the Sixty Mile River, 60 m via summer trail and 75 via winter trail, sw of Dawson, the banking point. Mining is the principal industry, gold having been found on Glacier, Miller and Big and Little Gold creeks in the vicinity. Mail stage to Dawson semi-monthly.

GLENBOYLE. A disc p o, logging and mining settlement on the north fork of the Klondike River, 26 m ne of Dawson, the p o, banking and commercial point. The hydro-electric generating plant of the Canadian Klondike Power Co is located here.

GOLD BOTTOM. See Hunker.

GOLD RUN. Pop 100. A mining camp, first settled in 1898, on Gold Run Creek, 55 m se of Dawson, the banking point. Placer mining is the only industry. Granville is the nearest p o.

GRAND FORKS. See Bonanza.

GRANVILLE. (For names see Territorial Alphabetical List.) Pop 150. A p o and mining settlement on Dominion Creek at the mouth of Gold Run Creek, 55 m se of Dawson, the banking and shipping point. It has a general store and 2 road-houses. Telephone connections with Dawson and the Klondike mining district. Mail stage semi-weekly to Dawson.

GRAVEL LAKE. A mining settlement on a lake of the same name near Clear Creek, a tributary of the Stewart River, 75 m above its mouth, 85 m cross country, se of Dawson, the banking point, and 35 ne of Black Hills, its nearest p o.

HAGGART CREEK. A mining settlement on a creek of the same name, 200 m e of the mouth of the Stewart River and 250 e of Dawson, the nearest banking point. Mayo is the nearest p o.

HALFWAY ROADHOUSE. On the Dawson-Forty Mile winter trail, 25 m nw of the former.

HENDERSON CREEK. A mining settlement on a creek of the same name, a tributary of the Yukon River, 4 m n of Stewart River, the p o, at the mouth of a river of the same name.

HIGHET CREEK. A mining settlement on a creek of the same name, a tributary of the Stewart River, 200 m e of its mouth, 250 e of Dawson, the nearest banking point, and 40 nw of Mayo, its nearest p o.

HOOTALINQUA. A steamboat landing and telegraph station on the White Horse-Dawson River route at the confluence of the Hootalinqua, Teslin, Thirty Mile and Yukon Rivers, 80 m n of White Horse, the nearest banking point and p o.

HOOTCHI. See Hutshi Village.

HUMES. A station on the White Horse-Dawson winter trail, 112 m se of the latter, the banking point. Black Hills is the nearest p o.

HUNKER. (For names see Territorial Alphabetical List.) Pop 50. A p o and mining settlement, also known as Gold Bottom, first settled in 1898, at the confluence of Hunker and Gold Bottom creeks, and on the Dawson-Granville road, 35 m nw of Granville and 20 se of Dawson, the banking point. Has a public school, general store and hotel. Mining is the principal industry. The Yukon Gold Co has a dredge working $2\frac{1}{2}$ m below, and the Canadian Klondike Mining Co's dredge is about 4 m up Hunker Creek. Yukon Telephone Syndicate, connections with Dawson and the Klondike mining district. Semi-weekly mail stage to Granville and Dawson.

HUTSHI VILLAGE. An Indian village, also known as Hootchi, on the Dalton trail, which runs from Chilkat to Pelly, and on Hutshi Lake, 210 m s of Pelly, 70 nw of White Horse, the banking point, 12 n of Champagne, the nearest p o.

INDIAN RIVER. A mining settlement, roadhouse and stage station on a river of the same name, and on the White Horse-Dawson winter trail, 28 m se of the latter, the banking point, and 3 se of Radford, the nearest p o.

ISAAC CREEK. A steamboat landing, wood camp and telegraph station on the Yukon River 47 m below Pelly, the nearest p o.

ISHIITH. A native settlement on the Dalton trail and on Ishiith Lake, 75 m s of Pelly, the nearest trading post, and 85 nw of Champagne, the nearest p o.

JENSON ROADHOUSE. A roadhouse on Dominion Creek, at the mouth of Jenson Creek, 30 m se of Dawson, the banking point and nearest p o.

KENO HILL. Pop 600. (For names see Territorial Alphabetical List). A p o and silver mining camp 160 m e of Dawson, banking point, and 40 n of Mayo, shipping point. Here are located the mines of the Treadwell Yukon Co and Keno Hill Ltd, both of which are producing high-grade ore, averaging 250 ounces of silver to the ton. Keno Hill Ltd shipped out 3500 tons in

1922 and will aggregate 9800 tons in 1923, while the body of ore in sight in both properties indicates a doubling of this in 1924. Automobile stage to Mayo. Wireless telephone connections with Dawson and Mayo.

KING SOLOMON DOME. See The Dome.

KIRKMAN CREEK. Pop 40. A disc p o and mining settlement on a creek of the same name, a tributary, right limit, of the Yukon River, 97 m s of Dawson, the banking point, and 25 s of Stewart River, nearest p o.

KLONDIKE CITY. A suburb of Dawson, lying s of same across the Klondike River. For names see Dawson.

KLONDIKE MINING DISTRICT. Is one of the richest placer mining district in the world. Commences at Dawson, runs s along the Yukon River to Indian River and e from Dawson along the Klondike River, including many smaller tributaries. Hunker, Bonanza, Sulphur, Dominion, Gold Run, Bear and many other smaller creeks are included in the district. Dawson is the banking, commercial point and p o.

KLUANE. A disc p o and mining settlement, also known as Silver City, first settled in 1904, on Lake Kluane at the mouth of Silver Creek, 150 m w of White Horse, the nearest banking and shipping point, and 90 w of Champagne, nearest p o. Monthly stage to Champagne and White Horse.

LANSDOWNE. A flag station on the W P & Y Route, 75 m n of Skagway, Alaska, 36 s of White Horse, the nearest banking point, and 8 n of Carcross, the nearest p o.

LAPIERRE HOUSE. A settlement at the confluence of the Waters and Bell rivers, the latter a tributary of the Porcupine River, and on the winter portage trail from the Porcupine to the Peel and Mackenzie rivers, 250 m ne of Dawson, the banking point, and 60 w of Fort McPherson, N W T, the nearest p o.

LAST CHANCE. A mining settlement and disc p o on Hunker Creek at the mouth of Last Chance Creek, and on the Dawson-Granville road, 10 m se of Dawson, the p o and banking point.

LEWIS. A telegraph and flag station on the W P & Y Route, 81 m n of Skagway, Alaska, 30 s of White Horse, the nearest banking point, and 14 n of Carcross, its nearest p o.

LITTLE RIVER. A roadhouse and stage station on a river of the same name and on the White Horse-Dawson winter trail, 41 m n of White Horse, the nearest banking point and p o.

LITTLE SALMON. A trading post on the Yukon River at the mouth of the Little Salmon River, 120 m n of White Horse, banking point, and 20 e of Carmacks, the nearest p o.

LIVINGSTON CREEK. A mining settlement and disc p o on a creek of the same name, a tributary of the Big Salmon River, 70 m ne of White Horse, the nearest banking and supply point and p o.

LORNE. A flag station on the W P & Y Route, 79 m n of Skagway, Alaska, 32 s of White Horse, the nearest banking point, and 12 n of Carcross, its nearest p o.

LOVETT GULCH. Pop 30. A mining district on a gulch of the same name, a tributary of Bonanza Creek, 4 m s of Dawson, the nearest banking point and p o.

LOWER BONANZA. That part of the Bonanza Creek mining district which is below Bonanza.

LOWER DOMINION. Pop 135. A disc p o and mining settlement, first settled in 1898, on Dominion Creek, at the mouth of Australia Creek, 36 m se of Dawson, the p o and banking point, and 6 below Dominion. Presbyterian Church. Yukon Telephone Syndicate, connections with Granville, Hunker, Dawson and the Klondike mining district.

LOWER LABARGE. A steamboat landing and telegraph station at the northern end of Lake Labarge, 375 m se of Dawson, the capital, and 50 n of White Horse, the nearest banking point and p o.

LUTE RIVER ROADHOUSE. The second relay station on the White Horse-Dawson winter trail, 44 m n of White Horse, the nearest banking point and p o.

MAYO. Pop 600. A p o (p o name Mayo Landing), trading post and mining settlement, also known as Mayo River Crossing, situated at the confluence of the Mayo and Stewart Rivers, 170 miles above the mouth of the latter in Eastern Yukon, 240 miles by river from Dawson, the nearest banking point.

Mayo is the shipping point for the rich Keno Hill silver mining camp, which from present indications promises in course of development to rival the famous Cobalt mine, as some ore shipped from here the past year has run as high as 1000 oz. of silver to the ton and the average of all shipments has been over \$200 to the ton. In 1921 a few tons were shipped. In 1922 there were 2300 tons shipped, in 1923, 9800 tons, and 1924 the estimate of the present operators is in excess of 25000 tons.

At present there are upwards of five hundred silver locations taken up and new discoveries are constantly being made.

Mayo has three general stores, a drug store, two hotels, two restaurants, a saw mill in course of construction, electric lights and telephone service. A station of the Royal Canadian Mounted Police is located here.

Regular steamboat service is maintained by the White Pass & Yukon Route during the period of open navigation, and during the winter months a mail service is in operation by dog teams.