

Wright J W opr The ARR
 Wright Thos lab The ARR
 Wright & Olsen (Fred Wright Peter Olsen) restr
 Wrklu John carp The ARR
 Yakashoff Michl lab The ARR
 York Jas A lab The ARR
 Yoshida Costis lab The ARR
 Young Chas J mach The ARR
 Young Earl J boilermkr The ARR
 Young Frank B lab The ARR
 Young Victor lab The ARR
 Zakula Michl (City Hotel)
 Zang David lab The ARR
 Zharoff Philip E cook
 Zulbert Ernest lab The ARR
 Zurich Michl clk City Hotel

ABERCROMBIE. (For names see Territorial Alphabetical List.) A station on CR&NWRy, 55 m ne of Cordova. Has a salmon cannery.

AFOGNAK. (For names see Territorial Alphabetical List.) Pop 308. A p o on an island of the same name, 26 m nw of Kodiak, shipping pt and 200 sw of Seward, bkg pt. Has government school, a Greek church and several general stores, large tracts of timber are near, while signs of gold deposits are found in the vicinity. Potatoes and early vegetables are grown. Salmon, cod and herring fishing, fur hunting and fox raising are the principal industries.

AGATTU ISLAND. One of the Near Islands, comprising the most westerly of the Aleutian group in Southwestern Alaska.

AGWARIK. A native village on Nushagak river, 90 m se of Nushagak, the nearest p o.

AKIACHAK. See Aniakchak.

AKIAK. (For names see Territorial Alphabetical List.) Pop 150. A p o on Kuskokwim river, 150 m se of Iditarod, bkg pt.

AKUN ISLAND. (For names see Territorial Alphabetical List.) Pop 25. An island in the Aleutian group bordering on Unimak Pass. Has fine landlocked harbor, Lost Harbor. The chief industries are stock raising, mining and fisheries. Mail monthly via steamer from Valdez.

AKUTAN. (For names see Territorial Alphabetical List.) Pop 80. A p o on a pass and island of the same name in southwestern Alaska, 45 m ne of Unalaska and 900 sw of Seward, nearest bkg pt. Has Greek church. Mail boat monthly to Unalaska.

ALAGANIK. (For names see Territorial Alphabetical List.) A settlement on CR&NWRy and Gulf of Alaska at mouth of Copper river, 22 m se of Cordova, p o and bkg pt. It is ry station for McKinley Lake mining district.

ALATNA. (For names see Territorial Alphabetical List.) Pop 32. A mission 8 m s of Fairbanks, p o and bkg pt.

ALEUTIAN ISLANDS. A group of islands in southwestern Alaska, forming an extension of the Alaska Peninsula. They are the most westerly point of the United States possessions. At one time these islands are supposed to have been densely populated, as ruined villages and mummies of former inhabitants are found. About 5,000 natives and half-breeds live on these islands, mostly members of the Greek church, each of the principal islands having a chapel.

ALEXANDROUSH. A native settlement on Cook Inlet, 16 m sw of Seldovia, the nearest p o.

ALITAK. See Uyak.

ALSENTIA. A native settlement on Kodiak Island, 60 m se of Uyak, the nearest p o. Fishing is the principal industry.

AMALGA. (For names see Territorial Alphabetical List.) Pop 50. A p o and gold mining camp, also known as Eagle River, first settled in 1903. It is 40 m nw of Juneau, bkg pt, and 7 s of Eagle River Mining Co's dock, the nearest shipping pt. Mail boat from Juneau weekly in winter and semi-weekly in summer.

AMCHITKA ISLAND. One of the Rat Islands in the western Aleutian group.

AMERICAN CREEK. A mining district along the creek of the same name and its branches of which Dome, Alder and Nugget creeks are the most renowned. Eagle on the Yukon river is the nearest p o and trading post.

AMERICAN CREEK ROADHOUSE. A roadhouse on American creek in the Hot Springs mining district, near Tofty, the nearest p o.

AMERICAN RIVER. (For names see Territorial Alphabetical List.) A mining camp in the Port Clarence district, about 20 m e of Teller, nearest p o.

ANAKNAG. (For names see Territorial Alphabetical List.) A settlement on Wood river, 12 m n of Nushagak, nearest p o.

ANCHOR POINT. (For names see Territorial Alphabetical List.) A fishing and farming settlement on Anchor Point, 30 m n of Seldovia, the nearest p o.

ANDERSON'S CAMP. (For names see Territorial Alphabetical List.) A settlement on Kasaan Bay, 30 m nw of Ketchikan.

ANDREAFSKY. (For names see Territorial Alphabetical List.) A p o and settlement in western Alaska near mouth of the Yukon River, 150 m s of St Michael and 350 s of Nome, nearest banking point

ANDREANOF ISLANDS. A westerly group of the Aleutian peninsula.

ANEMUK. A native village on the Anvik River, 30 m n of Anvik, the nearest p o.

ANIAK. (For names see Territorial Alphabetical List.) A disc p o in Central Alaska. Mail to Bethel.

ANIAKCHAK. (For names see Territorial Alphabetical List.) A settlement on Aniakchak Bay, 140 m sw of Uyak, the nearest p o.

ANKOCHAGAMUT. (For names see Territorial Alphabetical List.) A village on the Yukon River, 200 m sw of Iditarod, the nearest banking point, 96 sw of Holy Cross, the nearest p o.

ANVIK. (For names see Territorial Alphabetical List.) Pop 140, mostly natives. A p o and Indian village settled 1869, the first trading station to be established in Alaska, situated at junction of Anvik and Yukon Rivers, 90 m airline, (400 by water), se of St Michael and 290 (airline, 400 by water) se of Nome, 400 sw of Fairbanks, banking point, and 100 w of Iditarod in winter (400 in summer), also a banking point. Has an Episcopal mission and school, and general stores.

ANVIL CREEK. See Nome.

APHOON. (For names see Territorial Alphabetical List.) A trading post on Norton Sound, at mouth of the Yukon river, 60 m sw of S Michael, the nearest p o.

APOKAK. (For names see Territorial Alphabetical List.) A settlement on Kuskokwim bay at mouth of Kuskokwim river, about 225 m sw of Iditarod, nearest banking point, 30 m n of Quinhagak, nearest p o.

ARCTIC CITY. (For names see Territorial Alphabetical List.) A mining settlement on the Koyokuk River, 120 m n of Tanana, nearest p o and shipping point, on Yukon River.

ATKA ISLAND. (For names see Territorial Alphabetical List.) Pop 75 (Aleutian natives). One of the principal islands of the Andreanof group, middle Aleutians (alt 4,988 ft), 300 m w of Unalaska, the supply point and nearest p o. Has a government school, native co-operative store, and herd of cattle and reindeer.

ATTU ISLAND. (For names see Territorial Alphabetical List.) One of the near islands (alt 3084), the most westerly point in Alaska, and the most important of the Aleutian group. Cape Wrangell is the extreme western point of the island. The population is about 50, nearly all natives.

AUK BAY. (For names see Territorial Alphabetical List.) A cannery settlement, formerly called Auke and Old Auke, on Lynn Canal, 15 m nw of Juneau, nearest banking and shipping point and p o.

AURORA. (For names see Territorial Alphabetical List.) A mining settlement on Kachekmak Bay, 20 m ne of Seldovia, nearest p o.

BAKER HOT SPRINGS. See Hot Springs.

BALDWIN. (For names see Territorial Alphabetical List.) A mining camp and disc p o 40 m sw of Ketchikan, banking and shipping point, and 5 w of Dolomi, nearest p o. Copper mining and marble quarrying are carried on.

BANNER. (For names see Territorial Alphabetical List.) A mining camp on Anvil Creek, and station on Seward Peninsula Ry, 6 m n of Nome, banking point and nearest p o

BANNER CREEK. (For names see Territorial Alphabetical List.) A mining settlement, also known as Warren, on Banner Creek and Seward Peninsula Ry near Nome, the nearest p o, banking and shipping point.

BARANOFF. (For names see Territorial Alphabetical List.) A p o on Baranoff Island and Chatham Strait in southeastern Alaska, 25 m ne of Sitka, and 100 w of Petersburg, the most convenient banking point.

BARROW. (For names see Territorial Alphabetical List.) Pop 322. A p o and village in extreme northern part of Alaska, also known as Point Barrow and Utkiavi, 600 m ne of Kotzebue, and 800 ne of Nome. Has a Presbyterian church and U S government school for natives. A winter mail route is maintained from Kotzebue, making 3 round trips each winter, and the Coast Guard cutter brings mail once during the summer. Four reindeer herds are maintained here, and this is the northern most mission, school and post office in America.

BATZKAKKAT. A native settlement on Koyokuk River, 100 m (airline) ne of Koyokuk.

BATZULNETAS. (For names see Territorial Alphabetical List.) A station on the overland mail route from Valdez to Eagle, 165 m n of Valdez, nearest p o

BAYVIEW. (For names see Territorial Alphabetical List.) Pop 350. A p o on west coast of Prince of Wales Island, 45 m w of Ketchikan, banking point.

BEALS CACHE. A roadhouse on Fairbanks-Chitina trail, 94 m s of Fairbanks.

BEAR CREEK. A flag station on the creek of the same name, and on The Alaska Railroad, 6½ m n of Seward, p o and banking point.

BEAR CREEK. A mining Creek tributary to the Buckland River, which flows into Kotzebue Sound e of Keewalik. It is 40 m se of Candle, its supply point and p o

BEAUCLAIR. (For names see Territorial Alphabetical List.) A disc p o on Kuiu Island in southeastern Alaska, 150 m nw of Ketchikan, 38 sw of Wrangell, nearest banking pt, and 25 nw of Shakan, nearest p o

BEAVER. (For names see Territorial Alphabetical List.) A p o on Yukon River, near mouth of Beaver Creek, 125 m n of Fairbanks, nearest banking point.

BEAVER DAM. (For names see Territorial Alphabetical List.) A mining camp on Valdez-Fairbanks route, 42 m ne of Valdez, nearest banking point and p o.

BELCARO. (For names see Territorial Alphabetical List.) A disc p o on Tonsina creek, 47 m n of Valdez, its steamer landing and nearest p o and banking point.

BELKOFSKI. (For names see Territorial Alphabetical List.) Pop 129. A p o on Alaskan Peninsula, about 650 m sw of Seward, nearest banking point.

BELL ISLAND HOT SPRINGS. A mineral springs situated on Bell Island, 45 m n of Ketchikan, nearest p o and banking point.

BELL ISLE. See Eagle.

BELUGA. Name changed to Moquawkie.

BERGEMAN. A settlement 2 m n of Arctic City.

BERGES. (For names see Territorial Alphabetical List.) A U S telg station on the Yukon river 200 m n of Kaltag.

BERGMAN'S ROADHOUSE. Also known as Eighteen-mile Roadhouse on Fairbanks-Chitina trail, 18 m s of Fairbanks, p o and banking point.

BERING CITY. On w side Port Clarence, 8 m w of Teller, nearest p o.

BERNER'S BAY. (For names see Territorial Alphabetical List.) A mining settlement on a bay of the same name, 30 m nw of Juneau, nearest p o and banking point.

BERRY. (For names see Territorial Alphabetical List.) A p o and mining settlement on Ester Creek, 7 m nw of Fairbanks, the supply station and banking point. Reached by stage from Ester Siding, a station on The Alaska Railroad, 8 m sw.

BETHEL. (For names see Territorial Alphabetical List.) Pop 221. A p o first settled in 1885, on the Kuskokwim River, 250 m (air line) sw of Holy Cross. Iditarod, 180 m (air line) ne is nearest banking point.

BETTLES. (For names see Territorial Alphabetical List.) A p o and trading post at the confluence of the John and Koyukuk Rivers, 325 m ne of Nulato, 225 m nw of Fairbanks, the banking point, and 85 sw of Wiseman the supply point.

BIG CHENA. (For names see Territorial Alphabetical List.) A mining settlement on a river of the same name, 85 m e of Fairbanks, the nearest banking point and p o.

BIG CHENA HOT SPRINGS. See Chena River Hot Springs and also Wilson's Hot Springs.

BIG HURRAH. (For names see Territorial Alphabetical List.) A station on the Council City & Solomon River R R, 10 m n of Solomon, nearest p o, at the junction of Big Hurrah Creek and the Solomon River. On the creek are located extensive placer and quartz mines and numerous ditches for hydraulic work.

BIORKA. Pop 46. A native settlement on an island of the same name, 10 miles se of Unalaska, the nearest p o.

BIRCH CREEK. A mining district on Birch Creek and its tributaries. Birch Creek is 300 miles long and has numerous branches, all of which yield moderate returns. Circle is the nearest trading post and p o.

BIRCH LAKE. A roadhouse on the Chitina-Fairbanks summer trail, 264 m n of Chitina and 57 s of Fairbanks.

BIRCHWOOD. A station on the Alaska R R.

BIRD CREEK. (For names see Territorial Alphabetical List.) A settlement on Turnagain Arm of Cook Inlet, 60 m by boat se of Anchorage, banking point. Hope is nearest p o.

BIRD POINT. (For names see Territorial Alphabetical List.) A camp 55 m se of Anchorage, banking point. Hope is p o.

BLACK RIVER. (For names see Territorial Alphabetical List.) A settlement on the river of the same name, 45 m e of Fort Yukon, nearest p o and 200 n e of Fairbanks, banking point.

BLACKBURN. (For names see Territorial Alphabetical List.) A settlement near McCarthy, its p o. Cordova is nearest banking point.

BLUFF. (For names see Territorial Alphabetical List.) A disc p o on Norton Sound, 60 m e of Nome, nearest banking point and 20 e of Solomon, nearest p o.

BONANZA CREEK. (For names see Territorial Alphabetical List.) A mining camp on a creek of the same name, 160 m from Nome, banking and supply point and 25 n of Unalaklett.

BOULDER. A flag station on the W P & Y Ry, 4 m n of Skagway, the p o.

BOULDER BAY. (For names see Territorial Alphabetical List.) A mining camp on Prince William Sound, 5 m e of Ella-mar, the nearest p o. Copper mines in vicinity.

BOULDER CREEK. (Big and Little; For names see Territorial Alphabetical List.) Situated in the Hot Springs Mining district. It is 25 m w of Hot Springs, the supply point, 9 w of Tofty, the nearest p o.

BOURBON CREEK. (For names see Territorial Alphabetical List.) A mining settlement on a creek of the same name which flows into Snake river near Nome, its p o.

BOX CAR ROADHOUSE. On the Innoko river, 8 m w of Ophir.

BRIDGEPORT. (For names see Territorial Alphabetical List.) A recently established p o in Southeastern Alaska.

BRISTOL BAY. See Nushagak.

BROOKS. See Livengood.

BUFFALO CREEK. (For names see Territorial Alphabetical List.) A mining settlement and station on the Seward Peninsula Ry, 30 m n of Nome, the nearest banking point and p o.

BULDIR ISLAND. One of the Rat Islands of the western Aleutian group.

BULL'S ROADHOUSE. A roadhouse on the Chitina-Fairbanks trail, 9 m n of Chitina, the nearest p o.

BURNETT INLET. A cannery settlement about 60 m s of Wrangell, its nearest banking point and p o.

BYLER'S STATION. See Bergman's Roadhouse.

CACHE CREEK. (For names see Territorial Alphabetical List.) A mining settlement on a creek of the same name near Tofty, its p o.

CALDER. (For names see Territorial Alphabetical List.) A disc p o and settlement settled in 1897, 3 m ne of Shakan, nearest p o, 70 sw of Wrangell, the nearest banking and shipping point, and 120 nw of Ketchikan.

CAMP COMFORT. A roadhouse, 10 m n of Valdez, nearest p o.

CAMPBELL. A flag station on The Alaska R R, 5 m n of Anchorage, nearest p o.

CANAGUANTA. A native settlement on the Copper River, 82 m n of Valdez, banking point and 18 n of Chitina nearest p o

CANDLE. Pop 100. (For names see Territorial Alphabetical List.) A p o at the confluence of Candle Creek and Keewalik River, 212 m by trail (400 by water) ne of Nome, nearest banking point and 10 m s of Keewalik, the shipping point. Is the turning point in the All Alaska Sweepstakes. Mining is the principal industry.

CANDLE CREEK. A mining settlement on a creek of the same name, in the Fairhaven mining district, 212 m by trail ne of Nome, the nearest banking point. Candle is the p o.

CAPE BLOSSOM. Known as Point Blossom, ne entrance into Kotzebue Sound from the Arctic Ocean. Kotzebue is the p o.

CAPE DENBIGH. A mining district near Norton Bay, 170 m e of Nome. Two large rivers, the Inluclik and Unalakleet, flow through the district; prospecting showing many of these tributaries to be rich. St Michael, 85 m s, is the nearest p o.

CAPE EDWARD. (For names see Territorial Alphabetical List.) A fishing station on a cape of the same name, 125 m sw of Juneau, its banking and shipping point. Chichagof, 10 m e is the nearest p o.

CAPE ESPENBERG. A cape and settlement on the extreme southern part of Kotzebue Sound, 40 m nw of Deering, its nearest p o.

CAPE FANSHAW. (For names see Territorial Alphabetical List.) A p o and U S lighthouse station, also known as Southeast Five Finger Island, settled in 1901, on Frederick Sound, 75 m nw of Wrangell and 80 se of Juneau, banking point. Steamer once a week from Juneau. Principal industry around Frederick Sound is fishing, logging and prospecting.

CAPE FOX. (For names see Territorial Alphabetical List.) A settlement on Boca de Quadro Bay, near Sealevel, 24 miles s of Ketchikan, the nearest banking, steamship point and p o.

CAPE KRUSENSTERN. A cape and native settlement in the extreme northern part of Kotzebue Sound, 20 miles nw of Kotzebue, the nearest p o.

CAPE NOME. See Nome.

CAPE PRINCE OF WALES. Pop 375 natives A settlement on Bering Strait, the most westerly point of the mainland on this continent, 15 m nw of York, 60 w of Teller and 135 nw of Nome, the banking point. Kotzebue Sound summer mail route. It is a U S reindeer station, and has the largest settlement of natives in Alaska. Wales is the p o.

CAPE SMYTHE. Also known as Point Barrow, on the Arctic Ocean, in the extreme northern part of Alaska, 800 m ne of Nome. Barrow is the p o.

CAPE WRANGELL. The most westerly point of the United States' Alaskan possessions, on Attu Island of the Near Islands, the western extremity of the Aleutian peninsula.

CAPE YORK. (For names see Territorial Alphabetical List.) A mining district, also known as Kanaguk, on Bering Strait, 120 m nw of Nome. The Anikovik river flows through the district to Bering Strait. The claims are located on this river and its tributaries. The beach also offers valuable diggings.

CARMEL. A Moravian mission in Southwestern Alaska, 5 m w of Nushagak, the nearest p o.

CARO. A disc p o on Big Creek, a tributary of the Chandler River, first settled in 1906, 60 m s of Coldfoot, 100 n of Beaver on the Yukon River, the shipping point in summer, and 245 n of Fairbanks, nearest banking point. Mail to Beaver via Fort Yukon.

CASA de PAGA. A mining settlement on Casa de Paga River, in the Council recording district. Council is the p o.

CATALLA. See Katalla.

CHANDLAR. (For names see Territorial Alphabetical List.) Pop 32. A trading post 125 m up the Chandler River, about 80 m nw of Fort Yukon, the nearest p o.

CHARLEY CREEK. A landing and wood yard on the Yukon River near the mouth of Charley Creek, 30 m e of Nation, 80 ne of Eagle, the nearest p o, and 200 ne of Dawson, Y. T., its banking point.

CHATANIKA. (For names see Territorial Alphabetical list.) Pop 30. A p o at the northern terminus of the Tanana Valley Railroad near the confluence of Cleary Creek and the Chatanika River. First settled in 1904. Telephone and daily mail service with Fairbanks, the supply and banking point, 29 m s.

CHATHAM. (For names see Territorial Alphabetical List.) A p o, settled in 1901, on Baranoff Island and Chatham Strait, 65 m ne of Sitka and 110 s of Juneau, the nearest banking point, with boat communication daily.

CHATHAM CREEK. A tributary of Cleary Creek in the Fairbanks mining district.

CHEENIK. See Golovin.

CHENA. (For names see Territorial Alphabetical List.) A disc p o at intersection of Tanana River and Chena Slough, 10 m se of Fairbanks, banking point and nearest p o.

CHENA HOT SPRINGS. A popular resort, also known as Big Chena Hot Springs, on the n fork of the Chena River, 61 m e of Fairbanks, the banking, supply point and nearest p o. See also Wilson's Hot Springs.

CHICHAGOF. (For names see Territorial Alphabetical List.) Pop 172. A mining camp and p o in Southeastern Alaska, on the western shore of Chichagof Island, 50 m nw of Sitka and 150 sw of Juneau, the nearest banking and shipping point. Has a graded school.

CHICKEN. (For names see Territorial Alphabetical List.) Pop 150. A p o and mining settlement on a creek of the same name, a tributary of the Forty Mile River, 120 w of Dawson, Y T, the nearest banking point, 60 sw of Eagle, the shipping and supply point, and 10 w of Franklin, its recording office.

CHIGNIK. (For names see Territorial Alphabetical List.) Pop 150. A p o and fishing station on Anchorage Bay and Alaska Peninsula, 165 m sw of Karluk. Seward is the nearest banking point. Has a Greek Catholic church and salmon canneries. Mail monthly between Seward and Unalaska.

CHILKAT. (For names see Territorial Alphabetical List.) A settlement on Lynn Canal, at the mouth of the Chilkat River, 20 m s of Skagway, its banking point, and 2 e of Haines, the nearest p o. Shipments may be made to Pyramid Harbor, its boat landing. Salmon canning is the principal industry.

CHILKAT VILLAGE. (For names see Territorial Alphabetical List.) A settlement on Controller Bay, 440 m nw of Sitka, 75 sw of Cordova, the nearest p o.

CHILKOOT. A settlement on Lynn Canal. P o at Haines.

CHILKOOT PASS. A pass through the mountains near the international boundary, on the overland trail from Dyea and Skagway to the Yukon gold fields.

CHINEGA. See Latouche.

CHISANA. (For names see Territorial Alphabetical List.) Pop 150. A p o and mining settlement on Bonanza Creek, 110 m se of McCarthy, the shipping point, and 281 n of Cordova, banking point. Monthly stage to McCarthy.

CHITINA. (For names see Territorial Alphabetical List.) Pop 175. A p o and station on the Copper River & Northwestern Ry, 130 m n of Cordova. It is the southern end of the trail from the coast to Fairbanks, passengers transferring from the C R & N W Ry to the stage at this place. Mining is the principal industry. Am Ry Express. Chitina-Tonsina Telephone Co.

CHOLMONDELEY SOUND. A settlement on Prince of Wales Island, 30 m w of Ketchikan, the nearest banking point. Chomly is the p o.

CHOMLY. (For names see Territorial Alphabetical List.) A p o on Cholmondeley Sound, 30 m w of Ketchikan, its nearest banking point. Principal industry is salmon packing. Communication with Ketchikan and Sulzer semi-weekly.

CHUITNA. A settlement on Cook Inlet, 50 m sw of Anchorage, banking point and nearest p o. Coal and oil deposits are found in the vicinity.

CIRCLE. (For names see Territorial Alphabetical List.) Pop 100. A p o and mining settlement, settled in 1893, and also known as Circle City, on the Yukon River, 262 m nw of Dawson, Y T, and 160 m ne of Fairbanks, its nearest banking point. It is a few miles from the Arctic Circle. It is a landing for river steamers and shipments may be made direct. The government has recently installed a wireless telegraph station, and is building an all the year round wagon road to the Birch Creek mining district, 50 m distant. The principal producing creeks are Mastodon, Eagle, Independence, Deadwood, Miller, Mammoth and Woodchopper. An Episcopal church is sustained.

CLAIKEKAKAMUT. A native village on the Yukon River, 75 m sw of Koserefsky.

CLARKS POINT VILLAGE. A settlement on Bristol Bay, 5 m s of Nushagak, the nearest p o.

CLARK'S ROADHOUSE. A roadhouse on the Fairbanks-Chitina winter trail, 44 m s of Fairbanks, the nearest banking point, and 4 s of Salchaket, its nearest p o.

CLEARY. (For names see Territorial Alphabetical List.) Pop 200. A p o and one of the earliest mining settlements in the Fairbanks district, 26 m ne of Fairbanks, the banking point, and 4 se of Chatanika, the nearest shipping point on the Tanana Valley Ry.

CLIFTON. (For names see Territorial Alphabetical List.) A telegraph and flag station on the White Pass & Yukon Route, 8 m n of Skagway, the nearest p o.

COAL CREEK. (For names see Territorial Alphabetical List.) A mining settlement on a creek of the same name, 6 m above the mouth of Woodchopper Creek on the left limit of the Yukon River and 50 m se of Circle, shipping point and nearest p o.

COAL HARBOR. (For names see Territorial Alphabetical List.) A disc p o on Unga Strait, 776 m sw of Valdez, the nearest banking point, 14 nw of Sand Point, its nearest p o. U S Weather Bureau is located here.

COLORADO ROADHOUSE. A roadhouse 35 m e of Fairbanks.

COARSE GOLD ROADHOUSE. A roadhouse on the Kougarok River near Taylor, its p o.

COLCHARNEY. A native settlement on the Copper River and on the monthly mail route from Valdez to Eagle, 140 m n of the former, its nearest p o. Deposits of gold and copper are found.

COLD BAY. (For names see Territorial Alphabetical List.) On the southern shore of the Alaska Peninsula in Southwestern Alaska, 60 m w of Uyak, the nearest p o. It is the coast station for overland winter mail from Bristol Bay, connections being made here with mail steamer plying between Seward and Unalaska.

COLDFOOT. (For names see Territorial Alphabetical List.) A disc p o on the headwaters of the Koyukuk River, 70 m ne of Bettles, 10 sw of Wiseman, the supply point and nearest p o.

COLVILLE RIVER. (For names see Territorial Alphabetical List.) A mining settlement along the Colville River, 400 m ne of Nome.

COMPLEX. A disc p o in Southeastern Alaska.

CONGREGATIONAL MISSION. (For names see Territorial Alphabetical List.) On the Cape Prince of Wales and Bering Strait, 30 m sw of York and 150 nw of Nome, from which place it receives its mail by steamers.

COOK'S INLET. See Kenai.

COOPER GULCH. (For names see Territorial Alphabetical List.) A mining settlement at head of Little Creek, n of Nome, its banking point and nearest p o.

COOPER'S ROADHOUSE. A roadhouse located 100 m ne of Iditarod, the nearest banking point, and 35 nw of Ophin, its nearest p o.

COPPER CENTER. (For names see Territorial Alphabetical List. Pop 100. A p o and mining settlement situated at the confluence of the Copper and Klutina rivers. It is the distributing point for the famous copper and gold mining camps surrounding the Copper River Valley. U S Indian schools located here. Valdez, 100 m s, is its nearest banking point.

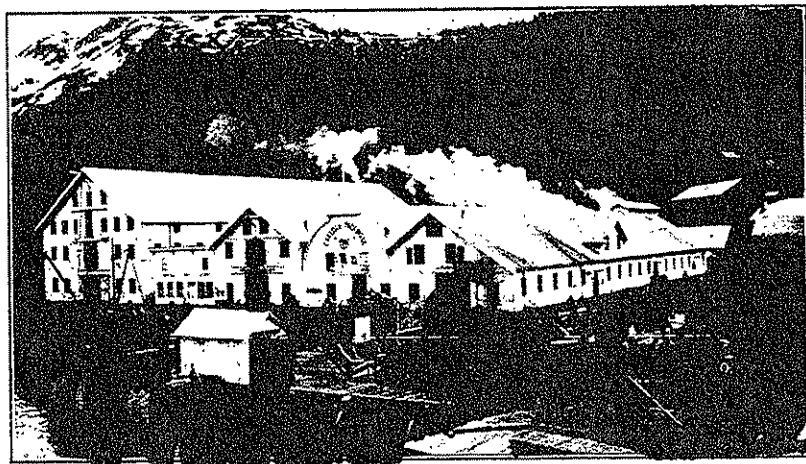
COPPERMOUNT. (For names see Territorial Alphabetical List.) A disc p o 150 m se of Sitka on Lynn Canal steamer route, and 40 e of Ketchikan, nearest p o and banking point. Extensive deposits of copper and large forests of spruce are found nearby.

City of Cordova

CORDOVA. Pop 955, U S census 1920. The town is 15 years old and the sea terminus of the C R & N W Ry, the steel artery which brings the rich copper ore of the Kennecott mines from its prehistoric fastnesses in the Wrangell Mountain range to the sea.

Cordova has a literary past. Around its creation are built, and in its neighborhood are laid the scenes and stirring incidents of "The Iron Trail," by Rex Beach.

The town is set like a jewel on the sea slopes of Mount Eyak, facing a broad and beautiful bay, with the fish-teeming fresh waters of Eyak Lake at the rear. It is the headquarters for the commercial and industrial life of the Copper River Valley, the Nizina, Slate Creek, Sushanna and Bremner gold districts, the Bering River coal field, the Chitina-Kotsina copper district, the Katalla and Yakataga oil fields, the Prince William Sound fishing area, and the Chugach National Forest.



CARLISLE PACKING CO.'S PLANT

Cordova is a modern town in every respect, with cable and wireless connection with the whole world. It has electric light and power, telephone and sewer systems, 2 banks, a daily newspaper, and all lines of business are represented. No town in Alaska offers the tourist such opportunity for diversified recreation. No part of the world has been so favored with magnificent mountain, glacier and river scenery as the Copper River Valley.

Industrial Resources—Alaska, the country of raw materials, has its richest section in the Copper River Valley. The gold of the interior rivers and the copper in the hills allure the prospector, that precursor of the pioneer. Crabs, clams, herring, hali-

but and salmon in the adjacent ocean waters have made Cordova the fishing center of Southwestern Alaska. The lumber industry and manufacture of wood pulp are attracting attention.

The Glaciers—The Childs and Miles Glaciers at Mile 49 on the C R & N W Ry, breaking off into the Copper River on opposite sides of the stream, are the most striking and vivid examples of those age-old ice bodies which have carved out our valleys and formed our rivers. The railroad journey from Cordova to Chitina furnishes a continuous panorama of these mightiest of nature's sculptures.

Recreation—The devotees of the rod and reel can experience the whole gamut of piscatorial emotions around Cordova. Fresh water lakes, clear streams, and the teeming ocean offer trout, salmon, red snapper and other finny denizens of the deep for the delectation and delight of the disciples of Izaak Walton. To the sportsman Cordova offers unsurpassed opportunities for the pursuit of his favorite variety of large or small game. The great brown bear of the Alaska coastal regions and adjacent islands is found in numbers near Cordova. Goats can be secured within ten miles of town. This is the outfitting point for the White River country, unequaled for Dall mountain sheep, moose, caribou and bear.

Gently lapping its wooded mountain banks, and situated almost in town, lies Lake Eyak, a rival of Lake Geneva in its marvelous natural beauty of setting. The lake is almost surrounded by mountains, is fed by clear water streams, and discharges into the ocean by means of a tidal river a few miles long. It is a spawning ground for salmon, and in its north arm the territorial government maintains a hatchery where visitors are always welcome. Small boats for fishing may be rented.

Many days can be spent here by the man or woman who feels the call of the high places. Unconquered peaks flaunt their defiant challenge and invite exploration. The National Forest Service is building trails to the summit of Mount Eyak and along Power Creek. Various mountain trips of a day's length offer themselves to the sojourner in Cordova.

Firm Abbreviation

CR&NWRy—Copper River & Northwestern Railway

City Officials

Mayor—Dr W W Council

City Clerk—K G Robinson

City Treasurer—Thos S Scott

Health Officer—Dr W W Council

Chief of Police and Fire Dept—Patk O'Toole

POLK'S
Buyers' Guide
of
Cordova, Alaska
1923-24



Representing the Business,
Commercial and Manufacturing
Interests of the City

Our Policy Is
"Absolute Safety"

Money Transferred to
All Parts of the World

DO YOUR BANKING BUSINESS WITH
Alaska's Branch Banking System

Bank of Alaska

Largest Capitalized Bank In the Territory

Capital, Surplus and Undivided Profits \$225,000

Banks Operated at

ANCHORAGE
SKAGWAY

CORDOVA
WRANGELL

Member American Bankers' Association
U. S. Depository For Postal Savings

OFFICERS

H. D. WALBRIDGE, Chairman.....New York
 E. A. RASMUSON, President.....Alaska
 R. N. MOYER, Vice-President.....Anchorage
 T. S. SCOTT, Vice-President.....Cordova
 G. W. UPSHAW, Vice-President.....Wrangell
 W. A. PRIES, Vice-President.....Skagway

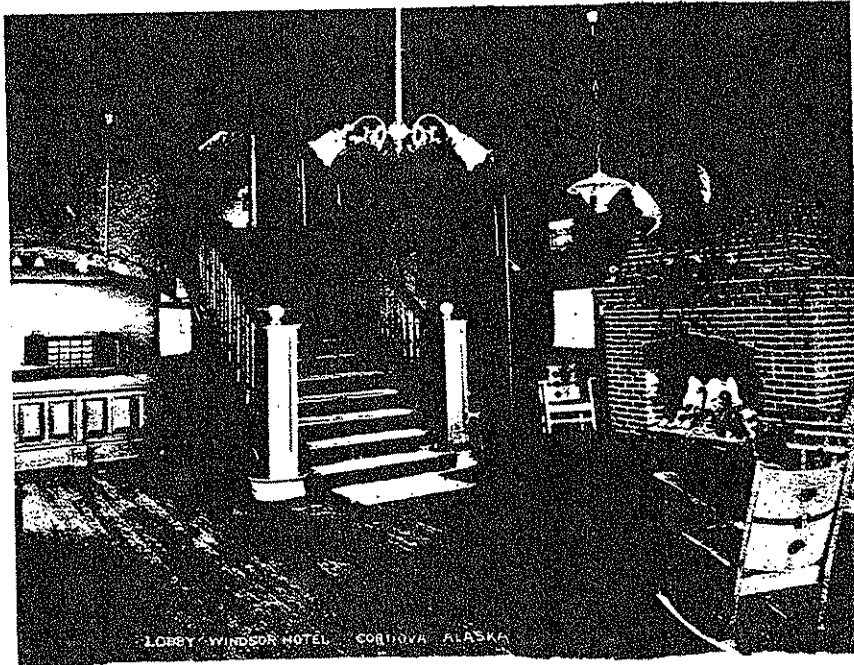
We Pay 4 Per Cent
On Your Savings

We Rent
Safety Deposit Boxes

WINDSOR HOTEL

The Gateway to the Copper River Country

Headquarters for Big Game Hunters,
Mining Men and Tourists



EVERY MODERN CONVENIENCE
ROOMS WITH BATH
EN SUITE OR SINGLE



Write for Reservations—Take Bus at Steamer

CORDOVA

ALASKA



Alaska Public Utilities

OPERATING

LIGHT, POWER,
WATER
TELEPHONES

ALEX. J. McCONNELL
President and Gen. Mgr.

ALVIN T. HAY
Vice-President

NATHANAEL GREENE
Secretary and Treasurer

CORDOVA, ALASKA

A. J. ADAMS, Manager

G. C. HAZELET, Director



Cordova Abstract & Realty Co.

Organized 1909

Incorporated 1911

INSURANCE

FIRE, LIFE, MARINE, LIABILITY, ACCIDENT, AUTOMOBILE

AGENCY

LOANS, RENTAL, REAL ESTATE, COLLECTIONS, SURETY BONDS,
FIDELITY BONDS

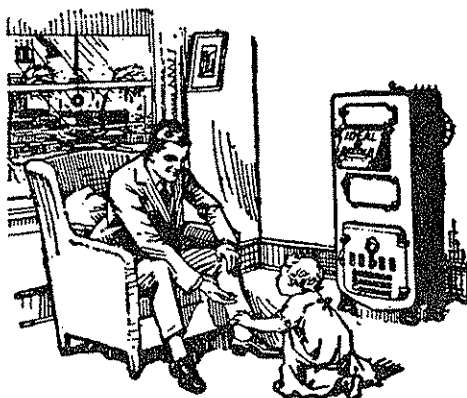
CORDOVA

ALASKA

CORDOVA SHEET METAL WORKS

J. C. SMITH, Propr.

GENERAL SHEET METAL WORK
PLUMBING



Steam and Hot Water Heating

CORDOVA

ALASKA



F. A. JONES,
Manager

Jones' Laundry

INC.

EXPERT LAUNDRY
SERVICE

18 Years' Experience

Special Service to Tourists, Hunters, Travelers
and Steamboats

"WE TREAT 'EM WHITE"

CORDOVA, ALASKA

Northern Drug Co., Inc.

CORDOVA, ALASKA



"The House of Service"

Northwestern Hardware Co.

"Established 1908"

Stoves
Sporting Goods
Fishing Tackle
Marine Hardware
Paints and
Varnishes
Prest-O-Lite
Batteries



Cutlery
Crockery
Congoleum
Linoleum
Silverware
Kitchen Utensils
Electrical
Appliances

GASOLINE—OILS—DISTILLATE

"The Hardware Store of Cordova"

BEN OSBORNE

MANUFACTURER

Nugget Jewelry

DEALER IN

JEWELRY, CUT GLASS, SILVERWARE, DIAMONDS
WATCHES, NAUTICAL INSTRUMENTS
OPTICAL GOODS, CHINAWARE AND IVORY
INDIAN CURIOS AND ESKIMO IVORY CARVINGS
BASKETS, MOCCASINS AND SOUVENIRS
MANUFACTURING OPTICIANS, LENSES GROUND
RAW FURS BOUGHT AND SOLD

CORDOVA

ALASKA

MORE GOODS
ARE BOUGHT AND SOLD
THROUGH THE
CLASSIFIED BUSINESS ADS
OF THE
DIRECTORY
THAT
ALL OTHER MEN
DO NOT

Polk's Publications

National

Banker's Encyclopedia (Directory) of the United States and Canada
 Architects' and Builders' Directory of Pittsburgh and Allegheny, Pa.
 Dental Register and Directory of the United States and Canada.
 Medical Register and Directory of the United States and Canada.
 Real Estate Register and Directory of U. S. and Canada.
 National Iron and Steel Blue Book.

City and County Directories and State Gazetteers

ALABAMA Birmingham Mobile Montgomery, and 6 others	GEORGIA Atlanta Augusta Macon, and 5 others	MICHIGAN State Gazetteer Ann Arbor Battle Creek Bay City Detroit Flint Grand Rapids Jackson Kalamazoo Menominee Saginaw, and 25 others	NEW MEXICO State Gazetteer	SOUTH DAKOTA State Gazetteer Aberdeen Brown Co. Huron Mitchell Sioux Falls
ALASKA Alaska and Yukon Gazetteer	HAWAII Honolulu	MINNESOTA State Gazetteer Duluth Minneapolis St. Paul and 16 others	NEW YORK New York City N. Y. C. Corporation N. Y. C. Business Olean Watertown	TENNESSEE Memphis Nashville
ARIZONA State Gazetteer Phoenix and Salt River Valley Prescott and Yavapai County Tucson Yuma	IDAHO State Gazetteer Boise City and 8 others	MISSISSIPPI Columbus Hattiesburg Meridian Natchez Vicksburg	NORTH DAKOTA State Gazetteer Minot Ward County	TEXAS State Gazetteer Austin Beaumont Dallas Forth Worth Galveston Houston Waco, and 30 others
ARKANSAS State Gazetteer Fort Smith Hot Springs Little Rock, and 4 others	ILLINOIS Joliet Moline Rock Island Springfield	MISSOURI St. Joseph St. Louis	OHIO Ashtabula Bucyrus Cambridge Columbus Findlay Lima Newark Portsmouth Tiffin Toledo, and 12 others	UTAH State Gazetteer Ogden Salt Lake City, and 3 others
CALIFORNIA Fresno Long Beach Los Angeles Oakland Pasadena Pomona Sacramento San Diego San Jose, and 26 others	INDIANA State Gazetteer Evansville Fort Wayne Indianapolis Terre Haute, and 6 others	MONTANA State Gazetteer Anaconda Billings Butte Helena Missoula, and 12 others	OKLAHOMA State Gazetteer Enid Guthrie McAlester Oklahoma City Tulsa, and 5 others	WASHINGTON State Gazetteer Bellingham Everett Seattle Spokane Tacoma, and 22 others
COLORADO Boulder Colorado Springs Pueblo Trinidad, and 4 others	IOWA State Gazetteer Council Bluffs Davenport Des Moines Sioux City, and 6 others	NEBRASKA State Gazetteer Lincoln Omaha, and 4 others	OREGON State Gazetteer Astoria Eugene Portland Salem, and 10 others	WEST VIRGINIA State Gazetteer Huntington Wheeling, and 7 others
DELAWARE Wilmington	KANSAS State Gazetteer Lawrence Leavenworth Topeka Wichita, and 9 others	NEVADA State Gazetteer Reno and Sparks	PENNSYLVANIA State Gazetteer Altoona Erie Johnstown Lancaster Pittsburgh Scranton Wilkes-Barre York, and 32 others	WISCONSIN State Gazetteer Ashland Marinette Superior
DIST. OF COLUM. Washington	KENTUCKY Lexington	NEW JERSEY Jersey City Hoboken New Brunswick North Hudson		WYOMING State Gazetteer Cheyenne Laramie Sheridan
FLORIDA State Gazetteer Jacksonville Pensacola Tampa, and 11 others	LOUISIANA Alexandria Shreveport			
	MARYLAND State Gazetteer Baltimore City Cumberland			

R. L. Polk & Company, Inc.

ESTABLISHED 1870

DIRECTORY PUBLISHERS

Mailing Lists, Addressing and Mailing

Seattle, Washington

ASSOCIATE OFFICES

Detroit
New York
Chicago
St. Louis
St. Paul
Pittsburgh
Baltimore
Dallas
Houston

Portland
Minneapolis
Memphis
Atlanta
Columbus
Washington
Indianapolis
Toledo
Des Moines

Tacoma
Nashville
Salt Lake City
Jacksonville
Birmingham
Grand Rapids
Wheeling
Colorado Springs
Davenport

Spokane
Fort Wayne
Duluth
Butte
Sioux City
Ogden
Wilkes-Barre
Oakland

Los Angeles
Scranton
Boise
Little Rock
Pueblo
St. Joseph
Omaha
Topeka

CORDOVA ALPHABETICAL LIST OF NAMES

Abu M cook CR&NWRy

ACHISON H W, Asst Cashr Bank of Alaska

Ackerman Jos

ADAMS A J, U S Commissioner, Mgr Cordova Abstract & Realty Co

Agoff Saml lab CR&NWRy

Aho Gabriel lab CR&NWRy

Ahrens Fred foremn CR&NWRy

Akre Solemon carp CR&NWRy

Alaska Hotel R W Ferrell mgr

ALASKA PUBLIC UTILITIES, Alexander J McConnell Pres-Gen Mgr, Alvin T Hay V-Pres, Nathanael Greene Sec-Treas, Operating Light, Power, Water and Telephones (See p 120)

Alaska Sea Foods Co clam and fish canners

Alaska Transfer Co (J L Galen)

Alexander H lab CR&NWRy

Alexander P H lab CR&NWRy

Allen Fred fox breeder

Allen Fred lab CR&NWRy

Alton Wm lab CR&NWRy

Amilong Otto lab CR&NWRy

Anderson Aug

Anderson Axel firemn CR&NWRy

Anderson Chas D lab CR&NWRy

Anderson Chas J lab CR&NWRy

Anderson David E asst cashr First Bank of Cordova

Anderson Edw

Anderson Emil trackmn CR&NWRy

Anderson E C firemn CR&NWRy

Anderson F fox breeder

Anderson I R slsmn Blum O'Neill Co Inc

Anderson Kathryn Mrs (Braxton House)

Anderson Louis fox breeder

Anderson M fox breeder

Angelos Peter lab CR&NWRy

Angerman Fred mach CR&NWRy

Anstis Everett W driver Jas Dinneen

Anstis M clk Jas Dinneen

Arcade Cafe Frank Nakaike

Arled Don music tchr

Arnell R E lab CR&NWRy

Austel Chas lab

Badden Leroy brkmn CR&NWRy

Baker Shirley A asst agt U S Bureau of Fisheries

BANK OF ALASKA, E A Rasmuson Pres, T S Scott V-Pres, H W Achison Asst Cashr (See p 118)

Barnes Cecil lab CR&NWRy

Barr Dalton L cashr Alaska Public Utilities

Bartell Anna wtrs Model Cafe

Basoff Nicholas trackmn CR&NWRy

Batoff Saml lab CR&NWRy

CORDOVA—Continued

Beal Ike opr in chg U S Telegraph and Cable Office
Beck A lab CR&NWRy
Beck A Mrs cook CR&NWRy
Beckman Gussie carp CR&NWRy
Bell Lena
Berg Frank foremn CR&NWRy
Berger Jos carp CR&NWRy
Bergstrom E lab CR&NWRy
Berry Gilbert music tchr
Bethel Chas
Betrosa Louis lab CR&NWRy
Bettue Chas lab CR&NWRy
Beyer Jeanette (Manhattan Hotel)
Bigford N lab CR&NWRy
Biggs M L (Daggett & Biggs)
Bigoff Alex lab CR&NWRy
Billet Ross G barber Wm Urquhart
Bjork Harry lab
Black A E lab CR&NWRy
Blakely Evelyn
Blaker L E lab CR&NWRy
Bloch Rica wtrs City Bakery
Bloedhorn Paul jeweler
Blum Chas trackmn CR&NWRy
Blum M pres Blum-O'Neill Co Inc and First Bank of Cordova
Blum-O'Neill Company Inc M Blum pres H I O'Neill v-pres
gen mdse
Boardway V L mach CR&NWRy
Boese A J lab CR&NWRy
Bogart Ferne Mrs tel opr Alaska Public Utilities
Bogart I D paints
Bogue W H (Cordova Express)
Bolden Bruce carp CR&NWRy
Boyle E V drugs
Brabazon John A lab CR&NWRy
Brack Andw lab CR&NWRy
Brady Jas lab CR&NWRy
Brady Neal lab CR&NWRy
Bratton Curran S
Bratton C E oiler CR&NWRy
Braxton House (Mrs Kathryn Anderson)
Braxton Jos lab
Brennan Michl foremn CR&NWRy
Brennar Patk brkmn CR&NWRy
Brockholm John fishermn
Brown Andw lab CR&NWRy
Brown W E dock agt CR&NWRy
Brunelle Maurice E clk CR&NWRy
Burchette Thos C eng CR&NWRy
Burke H W cook Knute Nefted
Burkhart Hand Laundry & Baths (May Jones)
Burnell A C lab CR&NWRy

Burns Frank (Cordova Machine Works)
 Burns Frank clk CR&NWRy
 Burns Patk lab CR&NWRy
 Calbo H car repr CR&NWRy
 Cannon Thos lab CR&NWRy
 Carlisle Packing Co Frank Wright (Seattle) pres fish canners
 Carlson Andw lab CR&NWRy
 Carlson Carl foremn CR&NWRy
 Carlson Fred carp CR&NWRy
 Carlson G W lab CR&NWRy
 Carlson Oscar lab CR&NWRy
 Carlyle J B firemn CR&NWRy
 Carruthers J T lab CR&NWRy
 Carson Harold A clk CR&NWRy
 Carson Wm H lab CR&NWRy
 Casey Jas lab CR&NWRy
 Cassidy Edw lab CR&NWRy
 Caswell Wm A drugs
 Cavanaugh W J driver Alaska Transfer Co
 Cerney Chas barber
 Chadwick Harold (Model Cafe)
 Charlie Edw lab CR&NWRy
 Chase W H phys
 Chevis Nickolas lab CR&NWRy
 Chickovich John lab CR&NWRy
 Chilkat Oil Co Geo C Hazelet mgr
 Chilliguos John lab CR&NWRy
 Christensen Chas carp
 Christensen John carp CR&NWRy
 City Bakery (Fred Hartwig)
 Clark Thos lab CR&NWRy
 Clarke Birdie
 Clarke Jas C eng Alaska Public Utilities
 Clarkson Ralph carp CR&NWRy
 Cloes Harry G dep U S Marshal
 Cloninger Thos W (The Club)
 Club The (T W Cloninger E O Miller) soft drinks
 Cochran Chas
 Cochran S B mach
 Cockrell Frank P brkmn CR&NWRy
 Cole Albt lab CR&NWRy
 Cole Frank
 Coleman Thos lab CR&NWRy
 Collins A boilermkr CR&NWRy
 Collins W A lab CR&NWRy
 Cooley Albt E carp CR&NWRy
 Copper Gate Packing Co fish canners
 Copper River & Northwestern Railway Co Caleb Corser supt
CORDOVA ABSTRACT & REALTY CO, A J Adams Mgr,
G C Hazelet Director, General Insurance, Real Estate, Loans,
Mortgages, Rentals and Surety Bonds, Abstracters (See
p 120)
CORDOVA DAILY TIMES, Harry G Steel Editor-Mgr

CORDOVA—Continued

Cordova Express (W H Bogue)

CORDOVA GENERAL HOSPITAL, Walter W Council Physician in Charge

Cordova House (G E Dooley D T Greenig)

Cordova Machine Works (Harold Graham Frank Burns)

Cordova Meat Co (W H Liebe M F McDonnell)

Cordova Mill & Lumber Co Chas J Goodall mgr

Cordova Packing Co Inc Thos S Scott pres W Y Taylor mgr
salmon pkrs

Cordova Public School

CORDOVA SHEET METAL WORKS (J C Smith), General Sheet Metal Work, Plumbing, Gas and Steam Fitting, Steam and Hot Water Heating (See p 121)

Corser Caleb supt CR&NWRy

Costello Frank lab CR&NWRy

COUNCIL WALTER W, Mayor, City Health Officer, Physician in Charge Cordova General Hospital

Crane C B barber Chas Cerney

Cranson J A clk CR&NWRy

Crimans J D brkmn CR&NWRy

Crocker Wm J

Cronin Danl lab CR&NWRy

Cunningham J F

Curran Philip lab CR&NWRy

Currier J Edw carp

Dacina C lab CR&NWRy

Daggett & Biggs (C T Daggett (Seattle Wn) M L Biggs)
dentists

Dahalger Jules B foremn Cordova Daily Times

Dahlberg Carl carp CR&NWRy

Daily Jos fishermn

Danielka Frank lab CR&NWRy

Date J W carp CR&NWRy

Date Lola Mrs tlrs Thos Hubbert

Davis Chester T acct

Davis Ralph H clk CR&NWRy

Davison F R agt Pacific Steamship Co

Day John eng CR&NWRy

Dedrickson G lab CR&NWRy

DeGraff Ruby

Dekanikas Nicholas lab CR&NWRy

DeLeo R J chf clk CR&NWRy

DeMoise Geo T barber Chas Cerney

Dempster W eng CR&NWRy

Denahay L P lab CR&NWRy

Dergantz Jos lab CR&NWRy

Dickens G C

Dickenson Lee E wharfinger CR&NWRy

Dickson Henry lab CR&NWRy

Dilley Russell lab CR&NWRy

Dimond Anthony J (Donohoe & Dimond)

Dinneen Jas gro

Discom Jas carp CR&NWRy
 Donough John
 Donoghue Patk trackmn CR&NWRy
 Donohoe Thos J (Donohoe & Dimond)
 Donohoe & Dimond (T J Donohoe A J Dimond) lawyers
 Dooley Dorothy A
 Dooley Geo E (Cordova House)
 Doran Peter lab CR&NWRy
 Doree Frank lino opr Cordova Daily Times
 Douglas Wm lab CR&NWRy
 Downing Chas lab CR&NWRy
 Downing Walter E cond CR&NWRy
 DuBois Pierre carp CR&NWRy
 Dudley Henry C clk CR&NWRy
 Dugger Jean (Quality Shop)
 Dunphy Gladys wtrs Arcade Cafe
 Dverseth & Johnson fox breeders
 Dwyer V J agt CR&NWRy
 Dyson Burnard R slsmn Blum-O'Neill Co Inc
 Eckdahl Frank lab CR&NWRy
 Eckstrom Timothy brkmn CR&NWRy
 Edmond C A foremn CR&NWRy
 Edmonson Raymond B carp CR&NWRy
 Effinger Rinehart lab
 Ekholm Fred carp CR&NWRy
 Eklund Chas foremn CR&NWRy
 Ellington Chas porter The Club
 Ellis Griffith lab CR&NWRy
 Ellis Thos J lab CR&NWRy
 Ellis Wm
 Elo Carl lab CR&NWRy
 Elsner R E dftsmn CR&NWRy
EMPRESS THEATRE (A E Lathrop)
 Engel Fred lab
 English B J soft drinks
 Erickson Arvid lab CR&NWRy
 Erickson John lab CR&NWRy
 Erickson P J Mrs
 Erler Emil lab CR&NWRy
 Erussard Janet Mrs nurse
 Ervin John lab CR&NWRy
 Escalida John lab CR&NWRy
 Evans Edna L lino opr Cordova Daily Times
 Evans Helen (wid John W)
 Evans Stanley G plstr
 Excell Fred bgemn Alaska Transfer Co
 Falk Walter lab CR&NWRy
 Feldman Henry
 Fernando Michl lab CR&NWRy
 Ferrel J Benj dep U S Marshal
 Ferrell R W (Alaska Hotel)
 Field A McN electn CR&NWRy
 Finkelstein Max pres Finkelstein & Sapiro Inc

CORDOVA—Continued

Finkelstein & Sapiro Inc Max Finkelstein pres J Sapiro v-pres

H I Lewis sec-treas gen mdse

First Bank of Cordova M Blum pres John Mullar v-pres-cashr

First Presbyterian Church Rev G Scherer pastor

Fischer Louis lab CR&NWRy

Fitzpatrick Danl carp CR&NWRy

Flanigan A lab CR&NWRy

Foster Donald F lab CR&NWRy

FOSTER FRANK H, Lawyer

Foster Margaret clk

FOYSTON CHARLES, Mgr Northwestern Hardware Co

Frame Grover C taxicabs

Frame Richd lab CR&NWRy

Fredeen Martin pntr CR&NWRy

Frederickson Fred slsmn Blum-O'Neill Co Inc

Frey Jos poultry

Fritsch Emil lab CR&NWRy

Fujikawa F Indy

Fujitani John cook CR&NWRy

Fulton Jas slsmn Blum-O'Neill Co Inc

Fundeen Edw carp CR&NWRy

FURSMAN WM L, Pres Northern Drug Co Inc

Galen Jas L (Alaska Transfer Co) dep colr in ch U S customs

Gallagher John car repr CR&NWRy

Ganiere Jos carp CR&NWRy

Garcia Jos lab CR&NWRy

Gentzler C M mach CR&NWRy

Ghidini Faustino lab CR&NWRy

Gilbert Wm

Gileson W lab CR&NWRy

Gilway Wm lab CR&NWRy

Goettels Carl V electn Alaska Public Utilities

Gonzalos T cannery wkr

Goodall Chas J mgr Cordova Mill & Lumber Co

Goodlataw Harry lab CR&NWRy

Goodreau Everett car repr CR&NWRy

Goto Thos restr

Gradina Saml lab CR&NWRy

Graham B O lawyer CR&NWRy

Graham Harold (Cordova Machine Works)

Grandfield John lab CR&NWRy

Gratros Nickolas lab CR&NWRy

Graves J W lab CR&NWRy

Grawdahl John carp CR&NWRy

Gray W E lab CR&NWRy

GREENE NATHANAEL, Sec-Treas Alaska Public Utilities

Greenig Danl T (Cordova House)

Gregory L H mach CR&NWRy

Gustafson Hugo lab CR&NWRy

Gwyer Jos lab CR&NWRy

Hach John lab CR&NWRy

Haef Fred soft drinks

Haef Vera Mrs clk Mrs B Keating
 Hagen Emil C lab CR&NWRy
 Hager John lab CR&NWRy
 Halferty Damon J
 Hall Jos P miner
 Haneman Grover C guard U S jail
 Hannin Todivo lab CR&NWRy
 Hansen Barney miner
 Hanson John lab CR&NWRy
 Hanson Victor carp CR&NWRy
 Happel Henry lab CR&NWRy
 Haracoppulos Chris lab CR&NWRy
 Hargrove Edw boilermkr CR&NWRy
 Harris Jas mach CR&NWRy
 Harris Walter R master mariner
 Harris & Brown fox breeders
 Hartman Paul lab CR&NWRy
 Hartman Walter lab CR&NWRy
 Hartwig Fred (City Bakery)
 Harwood Addie S Mrs
 Harwood Edw P dftsmn CR&NWRy
 Hawkins Chas brkmn CR&NWRy
 Hawkins W M carp CR&NWRy
 Haws Henry fishermn
 Hawthorne J
HAY ALVIN T, V-Pres Alaska Public Utilities
 Hayes Wm watchmn CR&NWRy
 Hazelet Calvin C dftsmn CR&NWRy
HAZELET GEO C, Director Cordova Abstract & Realty Co,
Mgr Chilkat Oil Co
 Hedstrom John janitor CR&NWRy
 Hendrickson Gus lab
 Henney Jas lab CR&NWRy
 Henry J J pntr CR&NWRy
 Hesse Wm A U S mineral surv
 Higginson Guy R eng CR&NWRy
 Hikiji H O cook CR&NWRy
 Hill Albt lab
 Hill Chas H game warden
 Hill Colin carp CR&NWRy
 Hill Emil opr U S Telg & Cable Office
 Hill Henry lab CR&NWRy
 Hill Oscar lab CR&NWRy
 Hill R lab CR&NWRy
 Hitt V R lab CR&NWRy
 Hodge John lab CR&NWRy
 Hoffman H lab CR&NWRy
 Hogberg Alex carp CR&NWRy
 Holdiman Fred H foremn CR&NWRy
 Holkstra Pink lab CR&NWRy
 Holt Arthur eng CR&NWRy
 Hood S E clk CR&NWRy
 Hovelson Geo A clk CR&NWRy

CORDOVA—Continued

Howard Alta Mrs nurse Cordova Gen Hosp
 Howard Brady foremn CR&NWRy
 Howard John driver Alaska Transfer Co
 Hubbert Thos N tlr
 Hult Carl carp CR&NWRy
 Humphreys John driver Alaska Transfer Co
 Hunger Benj carp CR&NWRy
 Hynes John lab CR&NWRy
 Itinideo Jas lab CR&NWRy
 Ivanoff John lab CR&NWRy
 Jackson Gilbert lab CR&NWRy
 Jackson M trapper
 Jacobsen Erland M ranger U S Forest Service
 Jacobsen Roy B lab CR&NWRy
 Jacobson Axel lab CR&NWRy
 Jaeger Fred trackmn CR&NWRy
 Jeter Izorah wtrs
 Jeter Leon lab CR&NWRy
 Jette Marie E wtrs City Bakery
 Jim Michl lab CR&NWRy
 Johansen Geo carp CR&NWRy
 Johanson A carp CR&NWRy
 Johanson Otto L carp CR&NWRy
 Johnson Anthony blksmith CR&NWRy
 Johnson Arthur firemn CR&NWRy
 Johnson Aug carp CR&NWRy
 Johnson Benj lab CR&NWRy
 Johnson Chas firemn CR&NWRy
 Johnson Chas fishermn
 Johnson Chas lab CR&NWRy
 Johnson Emil lab CR&NWRy
 Johnson Ernest carp CR&NWRy
 Johnson John G carp CR&NWRy
 Johnson Louis lab CR&NWRy
 Johnson Otto lab CR&NWRy
 Johnson Rebecca Mrs nurse Cordova Gen Hosp
 Johnson Robt lab CR&NWRy
 Johnson Sigurd H lab CR&NWRy
 Johnson Victor lab CR&NWRy
JONES F A, Pres-Mgr Jones Laundry Inc
JONES LAUNDRY INC, F A Jones Pres-Mgr (See p 121)
 Jones May (Burkhart Hand Laundry & Baths)
 Jones O E foremn CR&NWRy
 Jones Saml carp
 Jusslin Gust fishermn
 Kalashinkoff John trackmn CR&NWRy
 Kalsto Matt eng Alaska Public Utilities
 Kari Herman lab CR&NWRy
 Kartberg John lab
 Katsogianis Jos lab CR&NWRy
 Keating Barbara Mrs dry gds
 Kelley J lab CR&NWRy

Kennedy Peter watchmn CR&NWRy
Kennedy W lab CR&NWRy
Ketoff John lab CR&NWRy
Kindland Gust foremn CR&NWRy
King Wm H carp CR&NWRy
Kingsley John J lab CR&NWRy
Kitsman Chas eng CR&NWRy
Kjorsvik John fishermn
Klein John lab CR&NWRy
Klein Vera
Kleisler Emil tlr
Kneip Andw carp CR&NWRy
Kobis John lab CR&NWRy
Koch Richd H dairy
Kollerers John lab CR&NWRy
Koski Louis lab CR&NWRy
Koski Steven lab CR&NWRy
Krivich Louis lab CR&NWRy
Krueger Carlton F mach CR&NWRy
Kruger Frank car repr CR&NWRy
Kurtz Edw I brkmn CR&NWRy
LaBelle Florence printer Cordova Daily Times
Laeho Victor lab CR&NWRy
Lakau John lab CR&NWRy
Lakeview Hotel (H W McLean)
Lambert Harry carp
Lamoraux H
LaMotte A clk PO
Lane Michl J boilermkr CR&NWRy
Lange Henry G lab CR&NWRy
Lange Pauline (wid Chas)
Lange Wm A fishermn
Lankka Wm lab CR&NWRy
Larsen Geo O firemn CR&NWRy
Larson Alva firemn CR&NWRy
Larson Oscar L cond CR&NWRy
Larson Rudy eng Alaska Public Utilities
Lauderback E G boilermkr CR&NWRy
Lauer Henry carp CR&NWRy
Laurie Bros (J E and S N) clothing
Laurie J E (Laurie Bros)
Laurie S N (Laurie Bros)
Leach Horace clk CR&NWRy
Lechevallier Paul L lab
Lee Edw
Leen John C clnr
Lehman Harley
Levshakoff Paul lab CR&NWRy
Lewis H I sec-treas Finkelstein & Sapiro Inc
Lianes J lab CR&NWRy
Liebe Wm H (Cordova Meat Co)
Lillie C A
Lindgren Carl lab CR&NWRy

CORDOVA—Continued

Lindig Edw cook
 Lindquist John lab CR&NWRy
 Little Ottie
 Long Fred clk E V Boyle
 Lorenzen John D carp CR&NWRy
 Loro Peter lab CR&NWRy
 Lovseth Olaf car repr CR&NWRy
 Lovseth Sigurd car repr CR&NWRy
 Luke Benj trackmn CR&NWRy
 Luke Jos foremn CR&NWRy
 Lund Al contr
 Lund Gust blksmith CR&NWRy
 Lundgren John carp CR&NWRy
 Lundin Gust lab CR&NWRy
 Luoto Emil lab CR&NWRy
 Luppy Fred foremn CR&NWRy
 Lydick J V acct CR&NWRy
 Lynch T J brkmn CR&NWRy
 McAllen Mark clk CR&NWRy
 McAndrews Thos lab CR&NWRy
McCain Harry G, Asst U S Attorney
 McCarthy D J brkmn CR&NWRy
 McCaskey Edw E
**McConnell Alexander J, Pres-Gen Mgr Alaska Public
 Utilities**
 McCrimman A A carp CR&NWRy
 McDaniels H E dairy
 McDonald Geo roadmaster CR&NWRy
 McDonald Wm J forest supvr U S Forest Service
 McDonnell M F (Cordova Meat Co)
 McFadden Wm cond CR&NWRy
 McGill Peter lab CR&NWRy
 McKenna Barney lab CR&NWRy
 McKenzie Donald janitor
 McKinnon M J carp CR&NWRy
 McKnight Daisy Mrs
 McLain Henry W brkmn CR&NWRy
 McLaughlin T lab CR&NWRy
 McLean H W (Lakeview Hotel)
 McLean Lambert & Kisling fox breeders
 McMillan Wm Rev S J pastor St Joseph's Catholic Church
 Machin Leo H brkmn CR&NWRy
 Maguiness Danl lab CR&NWRy
 Mahoney Dorothy W bkpr
 Maillard Henry whsemn CR&NWRy
 Maki Geo lab
 Malcolm H B eng CR&NWRy
 Malin Wm lab CR&NWRy
 Malone E S lab CR&NWRy
 Manhattan Hotel (Louise Steel Jeanette Beyer)
 Mann Geo A clk CR&NWRy
 Mann J lab CR&NWRy

Manning Bertha E beauty parlor
Manning Geo E foremn CR&NWRy
Manthos Geo lab CR&NWRy
Martin Frank carp CR&NWRy
Martin Thos lab CR&NWRy
Masonic—F & A M Mt McKinley Lodge No 183 Walter Wolfe
W M Harry Acheson sec O E S Mrs Hilda Sheridan sec
Masterson A E brkmn CR&NWRy
Mathews Chas master mariner
Matsumoto Chas cook CR&NWRy
Matthews Thos lab
Mattison J E firemn CR&NWRy
Maule G C dentist
Maximoff Antony carp CR&NWRy
Meachin Leo H brkmn
Means G E cashr Alaska Transfer Co
Medley Edw F lawyer
Mellison Saml slsmn Blum-O'Neill Co Inc
Meras Manuel lab CR&NWRy
Meredith S Indy
Merrill C lab CR&NWRy
Miller E O (The Club)
Miller Frank lab CR&NWRy
Miller J C lab CR&NWRy
Miller Michl cook Knute Nefsted
Miller Norval D carp CR&NWRy
Miller Rose
Mitamura K (Northern Laundry Co)
Mitsui J cook CR&NWRy
Model Cafe (Wm Phinn Harold Chadwick)
Moerki Herbert lab CR&NWRy
Monroe Duncan lab CR&NWRy
Moore Chris T printer
Moore Mabel
Morgan Ruth nurse Cordova Gen Hosp
Morgridge Ira lab CR&NWRy
Mori M cook CR&NWRy
Morris Mabel
Morrison Wm foremn CR&NWRy
Morrison W M lab CR&NWRy
Mosser D A
Moynahan David A lab CR&NWRy
Moynihan Anne Mrs
Moynihan Jos clk
Moynihan Mary V
Mukai T cook CR&NWRy
Mullar John v-pres First Bank of Cordova
Munsen Edw mach CR&NWRy
Murphy John lab CR&NWRy
Murray Mercy Mrs cook Cordova Gen Hosp
Murray T E forest ranger U S Forest Service
Nakaheasihi M cook CR&NWRy
Nakaike Frank (Arcade Cafe)

CORDOVA—Continued

Nakomoto R cook CR&NWRy
 Naomoff Geo lab CR&NWRy
 Naomoff Patk lab CR&NWRy
 Nebbe John car repr CR&NWRy
 Neeley Thos fishermn
 Nefsted Knute restr
 Nelson Benj carp CR&NWRy
 Nelson Carl foremn CR&NWRy
 Nelson Edw pntr
 Nelson Fred lab
 Nelson Gus lab CR&NWRy
 Nelson G M lab CR&NWRy
 Nelson John lab CR&NWRy
 Nelson Otto bridgemn CR&NWRy
 Ness Geo lab CR&NWRy
 Ness H O lab CR&NWRy
 Nestor Thos G clk CR&NWRy
 Nettleton J N lab CR&NWRy
 Nettleton Price E eng CR&NWRy
 Nichalai Jos lab CR&NWRy
 Nichols Chas E firemn CR&NWRy
 Nichols G H cook Knute Nefsted
 Nickoloff Dimon shoe repr
 Nicolet J A cond CR&NWRy
 Noble H J
 Nockas Geo lab CR&NWRy
 Noel Wm carp CR&NWRy
 Noonan Jas lab CR&NWRy

NORTHERN DRUG CO INC, Wm L Fursman Pres, "The House of Service" (See p 122)

Northern Hotel (V G Vance)
 Northern Laundry Co (K Mitamura)
 Northern Light Canning Co Lund Utness mgr
 Northern Meat Market

NORTHWESTERN HARDWARE CO, Charles Foyston Mgr, Hardware, Sporting Goods, Stoves and Ranges, Household Goods, Marine Hardware, Paints and Oils (See p 122)

Norton John B janitor
 Nyguard Olaf fishermn
 Nylund Victor carp CR&NWRy
 Ohman Albt fishermn
 Ohman Oscar fishermn
 Okahira Kinney cook CR&NWRy
 O'Laughlin Esther nurse Cordova Gen Hosp
 O'Leary Chas N brkmn CR&NWRy
 O'Loughlin Matthew messr U S Telg & Cable Office
 Olsen Andw
 Olsen Arne S fishermn
 Olsen Peter fishermn
 Olson Fred lab CR&NWRy
 Olson Hans fishermn
 Olson Olaf fishermn

Olson Oscar A lab CR&NWRy
 O'Neill Harry I v-pres Blum-O'Neill Co Inc
 O'Neill Harry J clk
 Orava Adam lab CR&NWRy
 Osborn Geo jeweler
OSBORNE BEN, Jeweler, Watchmaker and Optician, Manufacturer of Nugget and Ivory and Gold Jewelry, Diamonds, Cut Glass, Silverware and Optical Goods, Curios and Alaska Souvenirs (See p 123)
 Oss Edgar eng
 Oss Edw carp CR&NWRy
 O'Toole Patk blksmith Alaska Transfer Co
 Oya Thos cook CR&NWRy
 Pacific Steamship Co F R Davison agt
 Padden J O lab CR&NWRy
 Panousis Harry lab CR&NWRy
 Pappas Nicholas lab CR&NWRy
 Parker J H carp CR&NWRy
 Patterson Amy Mrs
 Patterson Ralph lab CR&NWRy
 Patton C J clk Blum O'Neill Co Inc
 Paxton Arnold M mach CR&NWRy
 Pell Ada Mrs
 Peltonen Wm lab CR&NWRy
 Pennanen Emil lab CR&NWRy
 Pennanen Martin lab CR&NWRy
 Pennycok Chas foremn CR&NWRy
 Pete Tony lab CR&NWRy
 Peterson Karl whsemn CR&NWRy
 Peterson Leslie lab CR&NWRy
 Peterson O lab CR&NWRy
 Peterson Peter firemn CR&NWRy
 Peterson Peter lab CR&NWRy
 Peterson Roy blksmith CR&NWRy
 Peterson Tony miner
 Petropulos Peter lab CR&NWRy
 Phillips David T clk
 Phillips Lester lab CR&NWRy
 Phinn Wm (Model Cafe)
 Pickle Noble J cashr CR&NWRy
 Pike Edw cond CR&NWRy
 Pinkus Arthur A pharm E V Boyle
 Pioneer Packing Co fish cannery
 Pioneers of Alaska Cordova Igloo No 19 meets 2d and 4th
 Fridays Julius Struck pres, Geo Dooley sec, W H Chase treas
 Pioneers of Alaska Cordova Igloo No 19 meets 2d and 4th
 Fridays Mrs H Leach pres Mrs Amelia Struck sec Mrs
 Minnie Dooley treas
 Pitcher Robt lab CR&NWRy
 Plants Edw lab CR&NWRy
 Pratt Helma Mrs tel opr Alaska Public Utilities
 Pratt Lee C dep forest supvr U S Forest Service
 Prechter Hans carp CR&NWRy

CORDOVA—Continued

Putselas Michl G lab CR&NWRy
 Quality Shop (Jean Dugger) women's furngs goods
 Quinlan Wm lab CR&NWRy
 Radebaugh O E foremn CR&NWRy
 Rahn Wm driver Alaska Transfer Co
 Ranisgard John firemn CR&NWRy
RASMUSON E A, Pres Bank of Alaska
 Raymond Albt H lab CR&NWRy
 Rayner F R lab CR&NWRy
 Reed Elmer L driver Cordova Meat Co
 Reed S E eng CR&NWRy
 Reedman J C clk Jas Dinneen
 Reeves Jos fishermn
 Renegar Danl
 Rice John lab CR&NWRy
 Riley Jas miner
 Robbins Frank janitor Coordova Gen Hosp
 Robinson K G circulation mgr Cordova Daily Times
 Rogers Chas E
 Rolfe Harry master mariner
 Rolfe Kate dry gds
 Rosswog Chas M gen mdse
 Rualles Frank lab
 Rudolph Lewis
 Rutanic Geo lab CR&NWRy
 Ryan J P G eng CR&NWRy
 St George's Episcopal Mission Rev E P Zeigler pastor
 St Jospeh's Catholic Church Rev Wm McMillan S J pastor
 Saari Edw M clk CR&NWRy
 Sade Wanns H (Smith's Rooming House)
 Sakamoto U cook CR&NWRy
 Salmon John lab CR&NWRy
 Salmon Michl lab CR&NWRy
 Salmon Thos foremn CR&NWRy
 Salo T Oscar lab
 Salo Wm lab CR&NWRy
 Samuelson E carp CR&NWRy
 Sapiro J v-pres Finkelstein & Sapiro Inc
 Sarin Carl carp CR&NWRy
 Sato Wm cook CR&NWRy
 Satterlee A J firemn CR&NWRy
 Savell Fred H cashr CR&NWRy
SCHEFFLER CHARLES H, Postmaster
 Scherer Frederic G Rev pastor First Presbyterian Church
 Schmidt Jos car repr CR&NWRy
 Schroeder Ernest F clk
 Schuetz J F carp CR&NWRy
 Schultz Edw J pntr CR&NWRy
 Scott Geo cond CR&NWRy
 Scott Sophie Mrs tel opr Alaska Public Utilities
SCOTT THOS S, V-Pres Bank of Alaska
 Scottish Rite Club A J Adams sec

Sellen J eng CR&NWRy
 Senff Frank lab CR&NWRy
 Seomon Tony lab CR&NWRy
 Sewa K cook CR&NWRy
 Shackelford Chas lab CR&NWRy
 Sheridan Jas V foremn CR&NWRy
 Shiels Edw mgr Mrs B Keating
 Shipman W H carp CR&NWRy
 Shoemaker David H cond CR&NWRy
 Shooman Oscar lab
 Shrine Club Ivan Suphelen sec
 Siermala John lab CR&NWRy
 Sinclair Wm lab CR&NWRy
 Sinkovitz Louis lab
 Slater Chas fishermn
 Slatten R carp CR&NWRy
 Smalley L W mach CR&NWRy
 Smith Geo foremn CR&NWRy
 Smith Geo L mach CR&NWRy
SMITH JOHN C (Cordova Sheet Metal Works)
 Smith Lew H
 Smith Otto
 Smith Saml B clk P O
SMITH WM G, With Cordova Sheet Metal Works
 Smith W G clk CR&NWRy
 Smith W P firemn CR&NWRy
 Smith's Rooming House (W H Sade)
 Snell W M Mrs
 Sorensen Hans lab
 Soro B lab CR&NWRy
 Spearman John F carp CR&NWRy
 Spellman J V lab CR&NWRy
 Spitz John lab CR&NWRy
 Stark Nels foremn CR&NWRy
 Stark N Mrs cook CR&NWRy
STEEL HARRY G, Editor-Mgr Cordova Daily Times
 Steel Louis (Manhattan Hotel)
 Steffgen J N carp
 Stevens John lab CR&NWRy
 Stevens R L mach CR&NWRy
 Stewart Geo wtr Model Cafe
 Stewart Geo B pumpmn CR&NWRy
 Stewart Thos lab CR&NWRy
 Story Roy J transitmn CR&NWRy
 Stoser Leora printer Cordova Daily Times
 Strand Julian carp CR&NWRy
 Strimple Thos firemn CR&NWRy
 Strong Albt carp CR&NWRy
 Struck Julius foremn
 Stuart Harry lab CR&NWRy
 Suby Jos lab CR&NWRy
 Sullivan John foremn CR&NWRy
 Suphelin Ivan H clk CR&NWRy

CORDOVA—Continued

Surgis Angelo lab CR&NWRy
 Svaleson Carl lab CR&NWRy
 Swalley J foremn CR&NWRy
 Swanson Harold cannery wkr
 Swanson Hazel Mrs tel opr Alaska Public Utilities
 Swanson John A mach CR&NWRy
 Swanson Manuel 2d hd gds
 Swanson Norman cannery wkr
 Sweet E H mach CR&NWRy
 Tadich Steven lab CR&NWRy
 Taguichi Y cook CR&NWRy
 Tanaka T restr
 Tassoulas Joohn lab CR&NWRy
 Taylor Warren A clk The Club
 Taylor W Y mgr Cordova Packing Co Inc
 Thanos Gust lab CR&NWRy
 Thirkill J W blksmith CR&NWRy
 Thisted Theo E brkmn CR&NWRy
 Thomas Louis carp CR&NWRy
 Thompson Benj foremn CR&NWRy
 Thorp Frank lab CR&NWRy
 Tibbs Eug lab CR&NWRy
 Tierney M foremn CR&NWRy
 Tierney T C jr car repr CR&NWRy
 Todd Fred H lab CR&NWRy
 Totemoff Alex lab CR&NWRy
 Tracy F B
 Travis G carp CR&NWRy
 Trenker Jos opr U S Tel & Cable Office
 Tsukino Geo cook CR&NWRy
 Tuloff Alex lab CR&NWRy
 Tuomey Michl lab CR&NWRy
 U S Forest Service (Chugach National Forest) W J McDonald
 forest supvr
 U S Naval Wireless Stations Mile 7 and Mile 14
 U S Telegraph and Cable Office Ike Beal opr in chg
 Urquhart Wm barber
 Utness Lund mgr Northern Light Canning Co
 Vance V G (Northern Hotel)
 Van Patten L wldr CR&NWRy
 Vevig Thos fox breeder
 Vevig & Drazenovich fox breeders
 Vietch Walter L brkmn CR&NWRy
 Vinquist John firemn CR&NWRy
 Waite Michl lab
WALN A F, Asst Mgr Windsor Hotel
WALN L, Owner-Manager Windsor Hotel
 Walsh Edw eng CR&NWRy
 Wanagren Gust lab CR&NWRy
 Warren Elmer J ship carp
 Wells Oscar lab CR&NWRy
 Welsh Edw lab CR&NWRy

White Jos A
 White Margaret wtrs Arcade Cafe
 Whitehead Jos lab CR&NWRy
 Whitehead M lab CR&NWRy
 Wiedt Edw eng CR&NWRy
 Wilcox Roy slsmn Blum O'Neill Co Inc
 Wildt E B
 Williams D C carp
 Wilson Albt W lab CR&NWRy
 Wilson Gust fishermn
 Wilson Jas lab CR&NWRy
 Wilson Jas trapper
WILSON KATHERINE, Associate Editor Cordova Daily Times
 Wilson M S agt CR&NWRy
 Wilson Olaf firemn CR&NWRy
 Wilson Oscar E lab CR&NWRy
 Wilson Thos lab CR&NWRy
WINDSOR HOTEL, L Wain Owner and Manager (See p 119)
 Winn Thos
 Winters Walter lab CR&NWRy
 Wisner Saml lab CR&NWRy
 Wolfe Geo firemn CR&NWRy
WOLFE L H, Dentist, Kennecott-Cordova-Latouche
 Wolfe Theo watchmkr
 Wolfe W M paints
 Wolking H B undtkr
 Wooding Jos car repr CR&NWRy
 Woods Thos lab CR&NWRy
 Workman Nicholas
 Yasunagra D cook CR&NWRy
 Ziebarth J A aud CR&NWRy
 Ziegler Eustace P Rev pastor St George's Episcopal Mission

CORWIN COAL MINE. On the Arctic Ocean, 300 m (air line) n of Nome.

COUNCIL. (For names see Territorial Alphabetical List.)
 Pop. 109. A p o on the northerly bank of the Neukluk River, 75 m e of Nome, the nearest banking point. It was first located in 1897 and is in the Council City recording precinct. It has steamer communication via Golovin to White Mountain on the Fish River 24 m w, from which point freight and passengers are handled on scows drawn by horses on Neukluk River. It has a stage line to East Fork, the terminus of the Council City & Solomon River Ry, 34 m sw, where the company has extensive placer mines in what is considered the best mining district in Seward Peninsula.

CRAIG. (For names see Territorial Alphabetical List.)
 Pop. 250. A p o established 1908 on west coast of Prince of Wales Island, 154 m w of Ketchikan, banking point. Mail weekly. Has a school, lumber mill and cannery. Fishing is principal industry.

CRIPPLE. (For names see Territorial Alphabetical List.) A disc p o 40 m n of Ophir, nearest p o, and 75 m ne of Iditarod, nearest banking point.

CROSSING THE. A roadhouse on the Olnes-Tolovana trail, 10 m s of Livengood, the nearest p o.

CYCLONE. A disc stage station on the Chitina-Fairbanks summer trail, 249 m n of Chitina and 72 s of Fairbanks.

DAHL. (For names see Territorial Alphabetical List.) A mining settlement and disc p o at the junction of Quartz and Dahl Creeks, 100 m n of Nome, the nearest banking point, and 10 n of Shelton, its nearest p o. Alaska Tel & Tel Co.

DAN CREEK. (For names see Territorial Alphabetical List.) A p o in eastern Alaska, 200 m ne of Cordova, the nearest banking point and 20 m e of McCarthy, its shipping point.

DANIELS CREEK. A mining settlement on a creek of the same name, which empties into the Bering Sea near Bluff.

DAVIDSON. A mining camp on Mary's river, 45 m ne of Teller, and 90 n of Nome, the nearest banking point. Boat connection with Teller, its nearest p o. See also Kougarok.

DAVIDSON'S LANDING. A steamboat landing on Salt Lake, 65 m ne of Nome.

DEAD HORSE HILL. (For names see Territorial Alphabetical List.) A settlement on the Alaska Railroad, 160 m n of Anchorage, the banking point, and 50 ne of Talkeetna, its nearest p o.

DEADWOOD. (For names see Territorial Alphabetical List.) A p o and mining district settled in 1894, located on Deadwood Creek, 42 m sw of Circle, the supply point, and 120 n of Fairbanks, the banking point. Circle Telephone Co, connections with Circle, Eagle Creek and Miller House.

DEERING. (For names see Territorial Alphabetical List.) Pop 60 whites, 30 natives. A p o on Good Hope Bay at the mouth of the Immachuck River, first settled in 1901, 150 m (300 by water) n of Nome, the nearest banking point, and 40 w of Candle. Mining is the principal industry.

DELTA ROADHOUSE. See Washburn.

DEMENTI. (For names see Territorial Alphabetical List.) A settlement on the Innoko River at the mouth of the Iditarod River, 50 m ne of Holy Cross, 50 w of Dikeman and 50 nw of Iditarod, its nearest point and p o.

DEMPSEY. (For names see Territorial Alphabetical List.) Pop 100. A p o and mining settlement on the Chistochina river and Daisy creek, 210 m n of Valdez, the nearest banking and shipping point, and 105 n of Copper Center. Gold and copper are found along the river and tributaries. Mail monthly from Valdez.

DENVER. A flag station on the W P & Y Route, 6 m n of Skagway, the nearest banking and p o.

DETNA ROADHOUSE. A roadhouse near Dishkaket, 8 m nw of Madison Creek.

DEXTER. (For names see Territorial Alphabetical List.) A mining settlement at the head of Nicola Gulch and station on the Seward Peninsula Railway, 9 m ne of Nome, its nearest banking point and p o. Mining is extensively carried on with good results.

DICK CREEK. (For names see Territorial Alphabetical List.) A mining settlement on Seward Peninsula, near Port Clarence. Teller is the p o.

DIKEMAN. (For names see Territorial Alphabetical List.) Pop 30. An Indian settlement and disc p o, established in 1910, on the Iditarod River, at head of navigation for the American-Yukon Navigation Co, 31 m by winter trail, 85 by water from Iditarod, the nearest banking point and p o.

DILLINGHAM. (For names see Territorial Alphabetical List.) Pop 36. A p o on Nushagak Bay 340 m (air line) e of Seward, banking point.

DIME CREEK. (For names see Territorial Alphabetical List.) A mining settlement on a creek of the same name, a tributary of the Koyuk River, first settled in 1914, 170 m ne of Nome, the nearest banking point. Mail from Golovin by steamer in summer and dog team in winter. Haycock is the p o name.

DISCOVERY. A mining camp on Anvil Creek and station on the Seward Peninsular Railway, 4 m n of Nome, its nearest p o.

DISHKAKET. An Indian village at the head of navigation on the Innoko River, 260 m from its confluence with the Yukon River, 60 n of Iditarod, its nearest banking point and p o.

DOLOMI. (For names see Territorial Alphabetical List.) A p o and village, first settled in 1900, on Prince of Wales Island, 28 m se of Ketchikan, the nearest banking and shipping point. Has a Methodist church. Weekly mail boat.

DOME. (For names see Territorial Alphabetical List.) A disc p o and mining town on a creek of same name, 16 m n of Fairbanks, the nearest banking point, and 4 m s of Olnes, its nearest p o.

DONNELLY'S ROADHOUSE. A roadhouse and telegraph station on the Fairbanks-Chitina Trail, 112 m se of Fairbanks.

DOTY'S COVE. (For names see Territorial Alphabetical List.) A settlement on the ne shore of Admiralty Island, 15 m s of Juneau, the nearest p o.

DOUGLAS. (For names see Territorial Alphabetical List.) Settled in 1885. Is a p o and mining settlement on Douglas Island and Gastineau Channel, 2 m from Juneau. It has a bank, 6 churches, saw mill, a privately owned water company, municipally owned wharf, fresh and salt water fire protection, fine public school building. Town is located on south side of Gastineau Channel in the direct line and a stopping place for 5 lines of steamships on the Seattle-Skagway mail route. Has telephone connections with Juneau, Thane and Treadwell.

DOYHOF. (For names see Territorial Alphabetical List.) A p o 5 m from Petersburg, banking point.

DRY CREEK. (For names see Territorial Alphabetical List.) A mining settlement on a creek of the same name, which flows into Snake River at Nome, its shipping point and p o.

DRY CREEK ROADHOUSE. A trading post and ranch on the Chitina-Fairbanks trail, 66 m n of Chitina, and 14 s of Copper Center, the nearest p o.

DUGGAN CREEK. A roadhouse near Hot Springs, its p o.

DUNDAS. (For names see Territorial Alphabetical List.) A fishing settlement on Chichagof Island, 60 m sw of Juneau, the banking point. Hoonah is the nearest p o.

DUTCH HARBOR. (For names see Territorial Alphabetical List.) Situated on Unalaska Island (one of the Fox Islands of the Aleutian group), and is the coaling station for steamers en route to St Michael and Nome. The nearest banking point is Seward, which is 1,200 m ne. The Northern Commercial Co has a large general merchandise establishment and coaling station here and conducts all the business enterprises on the island. Mail steamer from Valdez monthly. Unalaska is the nearest p o.

DUTTON. Pop 100. A mining settlement on Iliamna Bay (Cook Inlet). Is the supply point for Iliamna Bay and Clarke Lake country. Steamer from Valdez monthly. See also Homer. Mail to Seldovia.

DYEA. A disc p o on the Dyea River, near the head of Lynn Canal, 6 m nw of Skagway, the nearest banking point. It is a steamer landing and has telephone connection with Skagway, the nearest p o.

EAGLE. (For names see Territorial Alphabetical List.) Pop 100. An incorporated town and mining settlement, also known as Eagle City, on the Yukon River at the mouth of Mission Creek, 615 m nw of Skagway and 100 nw of Dawson, Y T, the nearest banking point. First settled in 1897, platted in January, 1899, and incorporated in January, 1901. Town Council elected annually. Has a public school, and several general stores. The townsite is known on the government maps of the U S coast and geodetic survey as Belle Island. It is the location of a U S customs house, the military post of Fort Egbert, the U S commissioner, the mining recorder of Eagle precinct and the Alaska headquarters of several domestic and foreign hydraulic mining companies operating in the immediate vicinity. Shipments may be made by boat via St Michael or by boat to Skagway, from there by rail to White Horse, thence by river steamer down the Yukon. Weekly stage to Dawson, thrice monthly to Circle and Chicken.

EAGLE RIVER. See Amalga.

EAST FORK. (For names see Territorial Alphabetical List.) A settlement on the Council City & Solomon River Railroad, located at the junction of the East Fork and Solomon River, 13 m sw of Council and 35 n of Solomon. It is also the terminus of the Solomon River and Council stage line, and the supply point for a large mining district.

EATON. (For names see Territorial Alphabetical List.) A disc p o on the Unalakleet River, 200 m se of Nome, the nearest banking point, and 65 ne of St Michael, the nearest p o. Mining is the principal industry of the surrounding country.

EATON REINDEER STATION. On the overland route from Eaton to Kotzebue Mission, 140 m n of the former.

EGOWIK. A native village on Norton Sound, 200 m se of Nome, nearest banking point, 85 ne of St Michael, nearest p o, 25 nw of Eaton.

EIGHT MILE ROADHOUSE. The first station on Fairbanks-Chitina trail (formerly Nine Mile Roadhouse), 8 m s of Fairbanks.

EIGHTEEN MILE ROADHOUSE. Also known as Bergman's Roadhouse, on the Fairbanks-Chitina trail, 18 m s of Fairbanks.

EKLUTNA. A flag station on TheAlaska Railroad, 28 m n of Matanuska, the nearest p o, and 68 ne of Anchorage, the nearest banking point.

EKUK VILLIAGE. A native settlement on Bristol Bay, 12 m s of Nushagak, the nearest p o.

ELDORADO. For names see Territorial Alphabetical List.) A mining town on a creek of the same name in the Fairbanks mining district. Mail to Fairbanks.

ELIM. (For names see Territorial Alphabetical List.) Pop 162. A mission, school and government reindeer station on Norton Bay, 25 m e of Golovin, its p o.

ELLAMAR. (For names see Territorial Alphabetical List.) Pop 106. A p o and mining camp, first settled in 1897, on Virgin Bay, Prince William Sound, 400 m nw of Juneau, and 27 sw of Valdez, its banking point.

ELLIOTT. (For names see Territorial Alphabetical List.) A disc p o at junction of Copper River and Elliott Creek. Mail to Strelna.

EMERY. (For names see Territorial Alphabetical List.) A mining town 58 m n of Anchorage, nearest banking point and 22 n of Matanuska, nearest p o.

ENGINEER. (For names see Territorial Alphabetical List.) A disc p o and mining district on Engineer Creek 3 m e of Gilmore shipping point on T V R R 11 m n of Fox, nearest p o and 20 n of Fairbanks banking point.

ESKA. A flag station on the U S Government Ry, 55 m n of Anchorage, the nearest banking point, and 18 n of Matanuska, its nearest p o.

ESTER CREEK. (For names see Territorial Alphabetical List.) One of the richest paying creeks in the Fairbanks mining district, 7 m n of Fairbanks and reached by stage from Ester Siding, a station on the Tanana Valley Railroad. Quartz mining is strongly developing and two or three small mills are operating very successfully. Berry is the p o.

ESTER SIDING. A station on the Tanana Valley Railroad, 6 m n of Fairbanks. Daily stage to Berry, 3½ m.

EUREKA. (For names see Territorial Alphabetical List.) A disc p o and mining district in Central Alaska, first settled in 1899, 20 m s of Rampart, nearest p o, on the Yukon River, 24 n of Hot Springs, the shipping point, and 100 w of Fairbanks, the banking point.

EX STATION. (For names see Territorial Alphabetical List.) A mining camp near the Nome River and a station on the Seward Peninsula Railway, 14 m ne of Nome, its p o.

EXCURSION INLET. (For names see Territorial Alphabetical List.) A fishing settlement near Juneau, its nearest banking point and p o.

EYEGAK. (For names see Territorial Alphabetical List.) A fishing settlement on Bristol Bay near Nushagak, its p o. Seward is its nearest banking point.