

Stability AND Permanency

Do you realize that a City Directory advertisement is a testimonial to the permanency, the stability, of the advertiser?

That's the sort of concern all of us want to patronize, because we know when they sell us merchandise they are behind it in every way, today, tomorrow, and for the years to come.

"Fly-by-night," "fire-sale" and other temporary or "get-rich-quick" concerns rarely appear in the City Directory.

And it is a noteworthy fact that the concerns which advertise one year in the city directory are there again next year. 90% of directory advertising is renewed.

Directory advertising is profitable. In connection with the classified business headings it is doubly effective.

May we explain how and why it will pay you?

R. L. POLK & CO., Inc.

Telephone Main 1626

71 Columbia

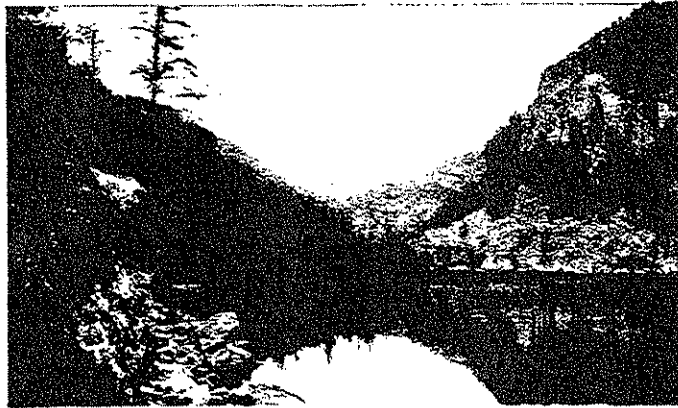
Seattle, Wash.

City of Skagway

SKAGWAY. Gateway of the Yukon. Population estimated 500. Is located in the southeastern part of Alaska on a level tract of land at the head of Lynn Canal, and at the mouth of the Skagway River. It is completely surrounded by mountains running from 1,000 to 8,000 feet high, which form a most beautiful and picturesque setting for the town.

This is the terminal for the inside route of the Alaska Steamship Co., Admiral Line, Canadian Pacific and Grand Trunk steamers, and it is also the southern terminus of the White Pass and Yukon Railway transportation system for the Yukon Territory, and river transportation on the upper Yukon and Stewart Rivers.

Skagway is one of the most interesting cities in Alaska for the tourist, both on account of the scenery and the historical associations. It was the original point of departure for the Chilkoot and White Pass at the time of the Klondike rush.



MIRROR LAKE, SKAGWAY

It carries a special appeal to sportsmen, as black, brown and grizzly bear, deer and mountain sheep are found in the adjacent hills and mountains; also the streams and lakes in the immediate territory are teeming with trout and salmon.

It is a supply and trading point for miners and trappers of the Yukon and Klondike districts, also a port of entry, and Customs offices of the United States and Canada are located here.

It contains four hotels, Catholic, Baptist, Methodist, Episcopal and Presbyterian churches, graded schools, electric light and water companies and a telephone system.

City Officials

Mayor—Howard Ashley

Clerk—Lee C Gault

Treasurer and Municipal Magistrate—Oscar Selmer

Chief of Fire Department—Wm Simes

Chief of Police—Lee Hudson



MORE GOODS
ARE BOUGHT AND SOLD
THROUGH THE
CLASSIFIED BUSINESS LISTS
OF THE
DIRECTORY
THAN
ANY OTHER MEDIUM
ON EARTH

POLK'S
Buyers' Guide
of
Skagway, Alaska
1923-24



Representing the Business,
Commercial and Manufacturing
Interests of the City.

THE GATEWAY TO THE YUKON

The Pullen House

MRS. H. S. PULLEN, Propr.

ALASKA'S FAMOUS TOURIST HOTEL

Rooms Single or En Suite
With or Without Bath

Electric Lights
Telephone

SKAGWAY

ALASKA

**Our Policy Is
"Absolute Safety"**

**Money Transferred to
All Parts of the World**

**DO YOUR BANKING BUSINESS WITH
Alaska's Branch Banking System**

Bank of Alaska

Largest Capitalized Bank In the Territory

Capital, Surplus and Undivided Profits \$225,000

Banks Operated at

**ANCHORAGE
SKAGWAY**

**CORDOVA
WRANGELL**

**Member American Bankers' Association
U. S. Depository For Postal Savings**

OFFICERS

H. D. WALBRIDGE, Chairman.....New York
E. A. RASMUSON, President.....Alaska
R. N. MOYER, Vice-PresidentAnchorage
T. S. SCOTT, Vice-President.....Cordova
G. W. UPSHAW, Vice-President.....Wrangell
W. A. PRIES, Vice-President.....Skagway

**We Pay 4 Per Cent
On Your Savings**

**We Rent
Safety Deposit Boxes**

C. W. ASK & SONS

GROCERIES

MEN'S FURNISHINGS

CROCKERY PAINTS
HARDWARE

SKAGWAY

ALASKA

"Best in the North"

Golden North Hotel

Headquarters for Tourists

60 Rooms with Hot and Cold Running
Water. 25 Rooms Private Bath

FAIR TREATMENT AND RATES THAT ARE RIGHT
GOOD SERVICE, MODERN IMPROVEMENTS

AMERICAN OR EUROPEAN PLAN

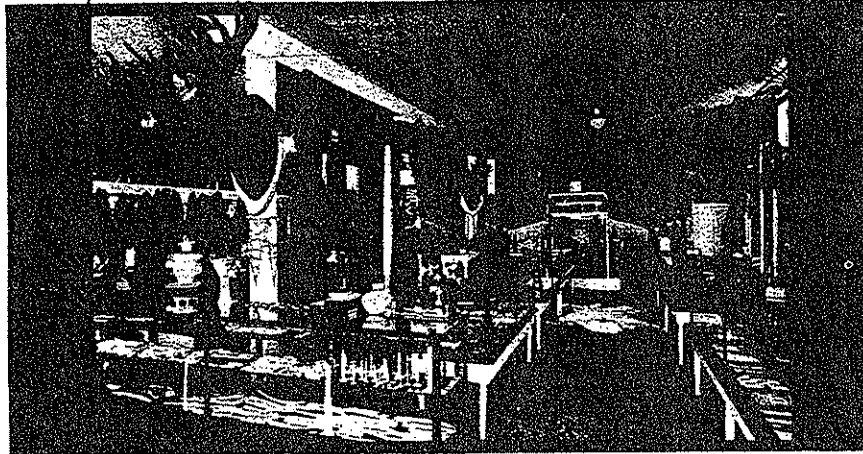
GEORGE R. DEDMAN, Prop.

SKAGWAY, ALASKA

One Block From
White Pass Depot

KIRMSE'S

C
U
R
I
O
S



C
U
R
I
O
S

LARGEST CURIO SHOP IN ALASKA

Carved Ivory

Nugget Jewelry

Native Alaska Curios

SKAGWAY, ALASKA

To the Tourist Visiting Skagway

We extend a cordial invitation to visit our Curio and Jewelry Store. Come whether you buy or not and look over our line of Indian Silver and Copper Goods manufactured by Indians in our own store, which includes Totem spoons, forks, napkin rings, bracelets, sugar tongs, etc.

We also have nice collections of Wood and Ivory Totem Poles, Ivory Beads, Cribbage Boards and Ivory Carvings.

Indian made moccasins and baskets.
Nugget and Old Ivory Jewellery of all kinds.

E. H. RICHTER

SKAGWAY

ALASKA



WHO SELLS IT?

The Classified Business headings in
the City Directory will tell you.
The City Directory is the most
complete local Buyers Guide avail-
able to residents of any city. Con-
sult The City Directory.

R. L. POLK & CO., Inc.
Publishers

71 Columbia St.

Seattle, Wash.

SKAGWAY ALPHABETICAL LIST OF NAMES

Abrahams Philip real est
 Achison Archie farmer
 Aden John
 Aden Wert D wharfinger WP&YR
 Alaska General Electric Co Mrs E T McBrien mgr
ALASKA STEAMSHIP CO, F W Johnson Agt
 Alden John foremn WP&YR
 American Railway Express Co L E Reynoldson agt
AMERICAN-YUKON NAVIGATION CO (White Pass & Yukon Route) Herbert Wheeler Gen Mgr, G H Miller Gen Auditor (See pp 462-466)
 Arctic Brotherhood Camp Skagway No 1
ASHLEY HOWARD, Master Mechanic White Pass & Yukon Route, Mayor of Skagway
ASK C W & SONS (C W, Cleon J and Harry G Ask), Groceries Men's Furnishings, Paints and Household Hardware and Crockery (See p 410)
ASK CHAS W (C W Ask & Sons)
ASK CLEON J (C W Ask & Sons)
ASK HARRY G (C W Ask & Sons)
 Baker Adelbert cond
 Baker Andw dairymn
 Baker E A brkmn WP&YR
BANK OF ALASKA (Capital, Surplus and Profits \$225,000.00), Edward A Rasmuson Pres, W A Pries V-Pres and Cashr, J R McMillan Asst Cashr, Branches Anchorage, Cordova and Wrangell (See p 409)
 Banks Thos N mgr Frye-Bruhn Co
 Becker W M carp WP&YR
 B P O E Skagway Lodge No 431 W J Mulvihill E R Fred J Van De Wall sec
 Bentzen Sigurd clk WP&YR
BERGE H M, Chief Surgeon White Pass & Yukon Route
 Bird R carp WP&YR
 Bjornson J lab WP&YR
 Black Lillian Mrs
BLANCHARD ALEX C, Chief Clerk to General Auditor White Pass & Yukon Route
 Blanchard Fred lab
 Blanchard John agt
BLANCHARD WM C, Chief Clerk to General Manager White Pass & Yukon Route
 Bledsoe Wm gro
 Bonnar John lab WP&YR
 Bowen Robt clk
 Boyker Bruce F cashr WP&YR
 Braich Geo billiards
 Brann Orrin
 British Columbia Railway Co (WP&YR)
 British Yukon Navigation Co Ltd (WP&YR)
 British Yukon Railway (WP&YR)
 Brown Andw M lab WP&YR

SKAGWAY—Continued**CANADIAN CUSTOMS, G V Zinkan Officer in Charge**

Canadian Pacific Ry Co L H Johnston agt

Cartwright Chas lab

Chambers John janitor WP&YR

Church of Christ Scientist

City Bakery (Jas Tropea)

Clark H D rancher

Cole Cecil C clk WP&YR

Conway Bessie sten Canadian Pacific Ry Co

Conway John clk P O

CONWAY MARTIN, Post Master

Cooper Constance emp WP&YR

DEDMAN CLARA S MRS, Asst Mgr Golden North Hotel**DEDMAN GEORGE R (Golden North Hotel)****DEDMAN HENRY, Clerk Golden North Hotel**

DeGruyther J Mrs

Dewey Hotel

Dortero Sabina (wid Tony) gen mdse

Dutcher R L store kpr WP&YR

Eville Robt W blksmith WP&YR

Farely Jane clk

Farmer Elmer clk WP&YR

Farwell Gurden J clk WP&YR

Feero Emma Mrs

Feero F N (Skagway Drug Co)

Fiquet Cadet D gard

First Presbyterian Church

Flaherty H B lab WP&YR

Flynn J W firemn WP&YR

Flynn P J insp WP&YR

Fonzo Fred jailer

Forsberg O lab WP&YR

Fowler Frank S chkr WP&YR

F O E Skagway Aerie No 25 M A Goding W P Earl Wallace sec

Frye-Bruhn Co T N Banks mgr meats

Fuchs P J carp WP&YR

Gallant Edgar Rev pastor St Marks Roman Catholic church

GAULT LEE C, Ticket Agent White Pass & Yukon Route,**City Clerk**

Gault R E eng WP&YR

Geyer Arthur M boiler mkr

Goding Morris R eng WP&YR

GOLDEN NORTH HOTEL (George R Dedman), Headquarters**for Tourists, American or European Plan (See p 410)**

Gorham H carp WP&YR

Grant Alice L (Grant & Sears)

Grant & Sears (A L Grant C T Sears) dry gds

Grashel J W tin smith WP&YR

Greene Jas F gen mdse

Gresbach J M lab WP&YR

Gutfeld Arnold clk WP&YR

Gutfeld Ethel (wid Max)

Guyer Arthur M boiler mkr WP&YR

Hagen S J carp WP&YR

**HAHN VICTOR I, Superintendent Rail Division White Pass
& Yukon Route**

Hannan K B clk WP&YR

Hansen Nicholas

Hanson J M foremn WP&YR

Hanson Saml M firemn WP&YR

Harrison Lloyd A dry gds

Haugen Sverre J lab

Hawksworth G Harry mech

Helms S L mgr U S Cable Office

Hern Perry M (Skagway Drug Co)

Henry R G clk WP&YR

Hestnes Edw brkmn WP&YR

Hilery A R brkmn WP&YR

Home Power Co Jas Nettles pres Chas Nye mgr

Hosie David lab

Hudson Lee chief of police

Hukill C firemn WP&YR

Hurley Danl eng Home Power Co

Itjen Martin expmn

Jackson S C lab WP&YR

Jennings Geo lab

Joe Frank lab WP&YR

JOHNSON F W, Agt Alaska Steamship Co

Johnston L H agt Canadian Pacific Ry Co

Keller Drug Co (J M and Mrs Martha B Keller)

Keller John M (Keller Drug Co)

Keller Martha B (wid Louis S; Keller Drug Co)

Kindell Augustus E dep U S Marshal

**KIRMSE'S CURIO SHOP, Max M Smith Mgr, Native Carved
Ivory, Nugget and Ivory Jewelry, Indian Baskets, Indian
Curios, Moccasins, Chilkat Blankets, Furs, Polar Rugs, Etc,
Alaskan Views, Books, Postals, Etc (See p 411)**

Koosuth C lab WP&YR

Koslosky Jos lab WP&YR

Landers G S lab WP&YR

Larson Carl carp WP&YR

Larson Christian brkmn WP&YR

LaRue Chas M insp U S Immigration Service

Lee Martha emp WP&YR

Leight R carp WP&YR

Logsten L lab WP&YR

McAllister Lorne A sub colr Canadian Custome and Excise

McBrien E T Mrs mgr Alaska General Electric Co

McBrien Jonathan blksmith

McBrien Walter electn

McCann Alfred J cond WP&YR

McLean John lab WP&YR

McMILLAN J R, Asst Cashr Bank of Alaska

Macomber Elizabeth Mrs dry gds

MacWilliams Ellen Mrs

SKAGWAY—Continued

Masonic—F & A M White Pass Lodge No 113 Roy E Gault
W M T J Standish sec meets 2d and 4th Saturdays 8 p m

Matthews John firemn WP&YR

Miller Geo G dep colr and insp U S Customs

**MILLER GEORGE H, General Auditor White Pass & Yukon
Route and American-Yukon Navigation Co**

Moore Frank lab

Moore Robt J dentist

Morganson Edw lab WP&YR

Morse Herbert J firemn WP&YR

Mulenberg Leonard carp

Mulvihill Harold E brkmn WP&YR

Mulvihill Vincent W asst agt Canadian Pacific Ry Co

Mulvihill Wm J chief dispr WP&YR

Murray Mary Mrs

Naomi Chapter No 9 O E S meets 3d Friday

Nelson Robt lab WP&YR

Nettles Jas pres Home Power Co

Nye Chas mgr Home Power Co

Olson John P eng WP&YR

**PACIFIC ARCTIC RAILWAY & NAVIGATION CO (W P
& Y R), Herbert Wheeler Gen Mgr, Victor I Hahn Supt**

Parker G H carp WP&YR

Peterson Chas cook

Phelps John C

Phipps Oscar carp

Pioneer Dairy (Henry Seeman)

Piro Albt pharm Keller Drug Co

Portland House (Jos J F Ward)

PRIES WM A, V-Pres Bank of Alaska

PULLEN HARRIET S MRS (The Pullen House)

**PULLEN HOUSE THE (Mrs H S Pullen), Alaska's Famous
Tourist Hotel (See p 408)**

Pullen Mary

Rapuzzi Chas. J eng WP&YR

Rapuzzi Della clk to supt White Pass & Yukon Route

Rapuzzi Geo mach

Rapuzzi R A mach WP&YR

Rapuzzi Theresa Mrs confr

RASMUSON EDWARD A, Pres Bank of Alaska

Remick Wm eng Home Power Co

Reynoldson Lyman E agt Am Ry Exp Co

**RICHTER E H, Jeweler, Manufacturer of Totem Spoons and
Silver and Copper Indian Goods, Carved Ivory, Nuggets and
Old Ivory, Indian Baskets and Moccasins (See p 411)**

Rodgers M E carp WP&YR

Rogers Ellen clk

Rogers Jas H agt at wharf WP&YR

Ross Malcolm cigars

St James Hotel John Williams mgr

St Mark's Roman Catholic Church Rev Edgar Gallant pastor

St Savior's Episcopal Church

Saake Chas A
 Sandbeck Amelia Mrs
 Schultz Fred watchmn WP&YR
 Sears Clara T (Grant & Sears)
 Seeman Henry (Pioneer Dairy)
 Selmer Birdie
 Selmer Osborne eng WP&YR
 Selmer Oscar barber city treas
 Simes Wm fire chief
 Sipperelle Guy C mach WP&YR
 Skagway Drug Co (P M Hern F N Feero)
 Skagway Public School Mabel Stone prin
 Skagway School Board V I Hahn pres Mrs V Suffecool treas
 Slater R carp WP&YR
 Smith A lab WP&YR
 Smith Eugene mach WP&YR
 Smith J R carp WP&YR
SMITH-KIRMSE HAZEL MRS (Kirmse's Curio Shop)
SMITH MAX M, Mgr Kirmse's Curio Shop
 Sparks Winfred carp
 Spear W L messr WP&YR
 Stanley Geo pntr
 Stevenson David L cond WP&YR
 Stone Mabel prin Skagway Public Sch
 Story Fred H foremn WP&YR
 Strud Andw bgemmn WP&YR
 Sturgell Garland H fuel
 Suffecool Frank expmn
 Talbot Lionel cond WP&YR
 Tanner Fred
 Tanner J M
 Taylor Geo W
TELFER ERIC, Cashier White Pass & Yukon Route
 Thompson John
 Trebor J carp WP&YR
 Tropea Jas (City Bakery)
 Tropea Tony lab WP&YR
 Understadt A carp WP&YR
 Ungefroren Hugo shoemkr
 U S Cable Office Sergt S L Helms opr in charge
 U S Commissioner J J F Ward
 U S Customs F J VanDeWall dep colr in chg
 Valens A W phys
 VanDeWall Fred J dep colr in chg U S Customs
 Volke Chris lab WP&YR
 Walker Chas florist
 Wallace Earl E mach WP&YR
 Wallace Jas chf clk WP&YR
 Wallace Jesse F mach WP&YR
 Ward Jos J F (Portland House) U S comnr
 Webster Frank D eng WP&YR
 Wells Chas W clk WP&YR
 West Britton J firemn WP&YR

SKAGWAY—Continued

WHEELER HERBERT, Gen Mgr White Pass & Yukon Route and American-Yukon Navigation Co

WHITE PASS & YUKON ROUTE (British Columbia Railway Co; British Yukon Railway; British Yukon Navigation Co Ltd; American Yukon Navigation Co; Pacific Arctic Railway & Navigation Co), F C Elliott (Chicago Ill) Pres, Herbert Wheeler Gen Mgr, John J Blanchard Dist Pass Agt, J H Rogers Gen Agt, C J Rogers (Seattle Wn) Purch Agt, V I Hahn Supt Rail Div, W D Gordon (White Horse Y T) Supt River Div, Eric Telfer Cashr, Howard Ashley Master Mechanic (See pp 462-466)

Williams John mgr St James Hotel

Wills Walter gard

Witso Severin N carp WP&YR

Wolfgren Wm opr

Wood J C lab

Wright Geo lab

Yeomans Ella Mrs

Yukon Order of Pioneers Igloo No 12

ZINKAN GLEASON V, Officer in Charge Canada Customs and Excise

SKITTOK. See Kenai.

SKOWL ARM. A salmon cannery located on Kasaan Bay, 27 m nw of Ketchikan, the nearest banking point and p o. Mail weekly from Ketchikan.

SMALLWOOD CREEK. A mining settlement on a creek of the same name, a tributary of the Little Chena River, 15 m ne of Fairbanks, the p o, banking and supply point.

SNETTISHAM. (For names see Territorial Alphabetical List.) Pop 30. A village p o settled in 1896, on Stephens Passage, 30 m se of Juneau, its nearest banking point, from which place it receives mail weekly by steamer. Contains a quartz mill. Mining is the principal industry.

SNOW GULCH. A mining settlement and suburb of Nome.

SNOWSHOE ROADHOUSE. On the Olnes-Tolovana trail, 13 m nw of Olnes.

SOLOMON. (For names see Territorial Alphabetical List.) Pop 300. A p o and shipping point settled in 1899, on Bering Sea at the mouth of Solomon River, 40 m e of Nome, the nearest banking point. It is the coast terminus of the Council City & Solomon River Ry, and a supply point for the Solomon River and Casa de Paga mining district. Has telephone connections with outside points.

SOUR DOUGH. A roadhouse and stage station on the Chitina-Fairbanks trail, 98 m n of Chitina, 209 s of Fairbanks, 150 n of Valdez, the banking point, and 22 n of Gulkana, the nearest p o.

SOUTHEAST FIVE FINGER ISLAND. See Cape Fanshaw.

SPECIMEN GULCH. A mining settlement on Specimen Creek, near Nome, nearest p o and banking point.

SPEEL RIVER (For names see Territorial Alphabetical List.) A p o 30 m se of Juneau, nearest banking point.

SPENCER GLACIER. A flag station on the Placer River, near a glacier of the same name on The Alaska Railroad, 53 m n of Seward, nearest banking point, and 19 s of Hope, nearest p o.

SPRUCE CREEK. A disc stage station on a creek of the same name on the Chitina-Fairbanks winter trail, 237 m n of Chitina and 70 s of Fairbanks.

SPRUCE CREEK. A mining settlement on a creek of the same name, near Ruby, its p o.

STAR CITY. See Starr.

STARIKVIPAK. A native village on the Yukon River, 90 m sw of Holy Cross, the nearest p o.

STARR. A disc p o also known as Star City, on the Yukon River, at the mouth of Seventy Mile River, 135 m nw of Dawson Y T, nearest banking point, and 10 n of Eagle, nearest p o.

STEEL CREEK. (For names see Territorial Alphabetical List.) A p o and mining settlement, first settled in 1897, on the Forty Mile River, 90 m nw of Dawson, the nearest banking point, 55 e of Eagle, and 4 ne of Jack Wade. Mail 3 times a month from Eagle.

STEPHENS VILLAGE. Pop 115. A native village on the Yukon River, 90 m (425 by water) nw of Fairbanks, the nearest banking point, 60 ne of Rampart, the nearest p o. Has an Episcopal mission and a government school for natives.

STRELNA. (For names see Territorial Alphabetical List.) A p o for the Copper Mountain mining district and station on the Copper River & North Western Ry, 150 m n of Cordova, the nearest banking point.

STUYAHOK. (For names see Territorial Alphabetical List.) A recently established p o in western Alaska, about 125 m s of St. Michael.

SULLIVAN CITY. A mining camp in the Port Clarence district, about 11 m se of Teller, its nearest p o.

SULLIVANS ROADHOUSE. A stage station on the Chitina-Fairbanks winter trail, 226 m n of Chitina and 81 s of Fairbanks.

SULPHUR SPRINGS. A settlement on Bell Island, 42 m from Ketchikan.

SULZER. (For names see Territorial Alphabetical List.) Pop 50. A town and p o on Prince of Wales Island, first settled in 1898, at head of Hetta Inlet, 45 m w of Ketchikan, the nearest banking point. Sulzer is port of entry for Southeastern Alaska. U S Customs House located here. Copper mining is the principal industry. Mail boats semi-weekly to Ketchikan.

SUMDUM. (For names see Territorial Alphabetical List.) A p o on Endicott Arm of Stephens Passage, 60 m se of Juneau, its banking point, from which point it receives its mail once a week.

SUMMIT. A flag station on The Alaska Railroad, 12 m n of Seward, the nearest banking point and p o.

SUMMIT. A mining settlement at head of Dexter Creek, and station on Seward Peninsula Ry, 8 m ne of Nome, its p o.

SUMMIT ROADHOUSE. Situated on the divide between Cleary and Pedro Creeks, 21 m ne of Fairbanks, the banking and supply point and nearest p o.

SUMMIT ROADHOUSE. Located 20 m nw of Ophir, its p o.

SUNNY BAY. A fishing settlement on a bay of the same name, near Juneau, banking point and p o.

SUNNY POINT. See Chomley.

SUNRISE. Pop 100. A disc p o and village, first settled in 1895, on Turnagain Arm of Cook Inlet at the mouth of Six Mile River, 40 m se of Anchorage, the nearest banking point, 3 across the water from The Alaska Railroad. Mining is the principal industry. Mail to Hope.

SUNRISE STATION. (For names see Territorial Alphabetical List.) A station on the U S Military Road to Sunrise, at Trail Lake, near the mouth of Johnson Creek, and on The Alaska Railroad, 34 m n of Seward, the nearest p o.

SUSITNA. Pop 75. A p o and native village, settled in 1885, on the Susitna River, 20 m from its mouth on Cook Inlet, 30 ne of Moquawkie, 30 nw of Knik, 200 nw of Seward and 65 nw of Anchorage, nearest banking and shipping point. It is 15 m from The Alaska Railroad. Has a Russian Greek Catholic church and government school for natives.

SWITCHBACK. A flag station on the White Pass & Yukon Route, 19 m n of Skagway, the nearest banking point and p o.

TACOMA ROADHOUSE. Located on the Valdez-Fairbanks trail, 55 m n of Valdez. Chitina is the nearest p o.

TAHNOKALONY. A native village on the Yukon River, 120 m sw of Tanana and 35 sw of Kokrines, the nearest p o.

TAIYA. See Dyea.

TAKOTNA. See Tokotna.

TAKU HARBOR. (For names see Territorial Alphabetical List.) A p o on a harbor of the same name on Stephens Passage, 12 m se of Juneau, the capital and nearest banking point.

TAKU VILLAGE. A native settlement on Stephens Passage, 12 m se of Juneau, the capital and nearest banking point. Taku Harbor is the p o.

TALKEETNA. (For names see Territorial Alphabetical List.) A p o and station on The Alaska Railroad, 110 m (by water) n of Anchorage, banking point.

TANAKOT. A native village on the Yukon River, 120 m sw of Tanana, and 30 sw of Kokrines, the nearest p o.

TANANA. (For names see Territorial Alphabetical List.) Pop 350. An important p o and trading station (incorporated Dec, 1912), formerly called Weare, on the right limit of the Yukon River near the mouth of the Tanana, 700 m nw of Dawson Y T, 200 nw of Fairbanks, the nearest banking point. Episcopal and Catholic missions are located here. Fort Gibbon, the U S Military Post, adjoins the town on the west. There is usually stationed here a battalion of infantry and a couple of companies of the U S Signal Corps. It is the detail headquarters and distributing point for the Washington-Alaska Military Cable and Telegraph System (wireless and cable) for Central Alaska.

TARAL. An Indian village on the Copper River, 64 miles ne of Valdez, the nearest banking point, and 6 sw of Chitina, the nearest p o.

TATALINA. A roadhouse on the Olnes-Tolovana trail, 20 m s of Brooks.

TAYLOR. (For names see Territorial Alphabetical List.) A p o, supply point and mining camp, first settled in 1900, near the head waters of the Kougarok River, 43 m n of Shelton, the shipping point on the Seward Peninsula Ry, and 125 n of Nome, the nearest banking point. Supplies are shipped by boat to Teller, thence by lighter to Davidson Landing and by team 40 m overland to Taylor.

TAZLINA. A roadhouse on Chitina-Fairbanks winter trail, 58 m n of Chitina and 248 s of Fairbanks. Copper Center is the nearest p o.

TEE HARBOR. A fishing settlement near Juneau, the banking point and p o. A large salmon cannery is locted here.

TEIKHELL CITY. On the All-American trail between Valdez and Fairbanks, 51 m n of Valdez, the nearest banking point and p o. Ranching and mining, both placer and quartz, are actively engaged in nearby. Long distance telephone connection. Washington-Alaska Military Cable and Telegraph System.

TELIDA. A native village on Tatlathna River, near Lake Telida, 180 m nw of Iditarod, banking point, 80 nw of McGrath, nearest p o.

TELLER. (For names see Territorial Alphabetical List.) Pop 80. Located on the right bank of Port Clarence Bay at the entrance of Grantley Harbor, about 80 m nw of Nome, the nearest banking point. It was settled in 1900 and is the supply point for the Graphite, Gold Run and Kougarok mining districts, also the tin regions on Cape Prince of Wales. It has a general store. There is a U S commissioner and a U S deputy marshal located here, also a U S jail. The government reindeer station and a Lutheran mission are located 6 m n. The Sunset Ditch, 27 m long and operating Sunset Creek, is opposite the town. Mail by boats.

TENAKEE. (For names see Territorial Alphabetical List.) Pop 174. A p o and resort, also known as Hoonah Hot Springs, first settled in 1898, on Tenakee Inlet, 70 m se of Juneau, banking point. A salmon cannery is located here.

TETLING. A native settlement on a river of the same name, at its confluence with the Tanana River, 125 m sw of Eagle and 65 sw of Chicken, the nearest p o.

THANE. (For names see Territorial Alphabetical List.) Pop 421. A mining camp and p o, formerly known as Sheep Creek, established in 1914, situated on Gastineau Channel, 4½ m se of Juneau, the nearest banking point. Juneau Telephone Co. Express, Am Ry. Hourly stage and daily mail from Juneau.

THANKSGIVING CREEK. A mining settlement near Rampart, its p o.

THETIS COAL MINE. On Cape Lisburne, the Arctic Ocean, 300 m (air line) n of Nome, the nearest banking point, and 30 n of Tigara, the nearest p o.

THIRTY MILE ROADHOUSE. See Piledriver Roadhouse.

THOMPSON'S LANDING. Pop 60. A steamboat landing and trading post on the Yukon River, 600 m e of Nome, 150 n of Iditarod, 100 ne of Kaltag, and 12 ne of St. Joseph. Iditarod is the nearest banking point and Nulato its nearest p o.

THORN ARM. See Sealevel.

TIGARA. (For names see Territorial Alphabetical List.) Pop 141 natives. A p o on the Arctic Ocean, also known as Point Hope, 350 m (260 air line) n of Nome, the nearest banking point, and 150 (air line) nw of Kotzebue. An Episcopal mission is located here as is also a trading post and whaling station.

TIKCHIK. A native village on a lake of the same name, 100 m nw of Nushagak, the nearest shipping point and p o.

TIN CITY. A mining settlement and disc p o on Cape Prince of Wales, 140 m nw of Nome, the banking point, and 8 se of Wales, the nearest p o. Tin mining is the principal industry.

TLAKEYIT. P o name is now Nulato, which see.

TLATEKAMAT. A native village on the Yukon River, 80 m sw of Holy Cross, the nearest p o.

TOFTY. (For names see Territorial Alphabetical List.) Pop 300. A p o and mining settlement, first settled in 1914, on Woodchopper Creek, in the Hot Springs mining district, 15 m from Hot Springs, the nearest shipping point, and 120 from Fairbanks, the banking point. Principal creeks are Cache, Woodchopper, American, Big and Little Boulder, all of which have Tofty for the p o. Telephone connections with Hot Springs. River boats to Tanana and Fairbanks.

TOGIAGAMUT. A native settlement on Togiak Bay, on the mail route from Nushagak to Holy Cross, 70 miles w of the former, its nearest shipping point and p o.

TOGIAK. A native settlement on bay of the same name and on the mail route from Nushagak to Holy Cross, 65 m w of the former, its nearest shipping point and p o.

TOKEEN. Pop 62. A p o first settled in 1909, on the west Coast of Prince of Wales Island, 110 m sw of Wrangell, the shipping point, and 120 nw of Ketchikan, the nearest banking point. Marble quarrying is the principal industry. Mail weekly by boat from Wrangell.

TOKOTNA. (For names see Territorial Alphabetical List.) A p o and settlement on a river of the same name, a tributary of the Kuskokwim River, 80 m w of Iditarod, the nearest banking point, and near McGrath.

TOLOVANA. Pop 750 (summer). One of the largest and most important mining districts in central Alaska (discovered 1914), near the head waters of the Tolovana River, 75 m nw of Fairbanks, the nearest banking and supply point. Reached by trail from Fairbanks via Olnes, a distance of 55 m, and by boats up the Tolovana River during the summer. The principal creeks are Livengood, Mike Hess and Olive. Livengood is the principal town which contains a number of hotels, general stores and all branches of business are conducted. A wireless station is located here. Livengood is the p o.

TOLOVANA. A trading post and steamboat landing on the Yukon River at the mouth of the Tolovana River.

TONGASS VILLAGE. See Fort Tongass.

TONKA. A disc p o, first settled in 1901, on Wrangell Narrows, 140 m e of Sitka, 35 nw of Wrangell. Petersburg is its nearest banking point and p o.

TONSINA. A disc p o and telegraph station on a river of the same name on the Valdez-Fairbanks trail, 80 m ne of Valdez. It is an important distributing point for Kotsina and other copper mines in this district. Chitina is the p o. Washington-Alaska Military Cable and Telegraph System.

TOPKUK. See Bluff.

TOYONAK. A settlement on Cook Inlet, 30 m sw of Tyonok, 74 sw of Susitna, the nearest p o. Oil and coal deposits are found.

TRAIL LAKE. A flag station on a lake of the same name and on The Alaska Railroad, 25 m n of Seward, the banking point and p o.

TRAMWAY BAR. A mining settlement on the Middle Fork of the Koyukuk River, 200 m ne of Tanana, 35 ne of Bettles and 30 sw of Nolan, its nearest p o.

TREADWELL. (For names see Territorial Alphabetical List.) Pop 325. A p o on Douglas Island, on s side of Gastineau Channel, 3 m s of Juneau, the capital, and adjoining Douglas, its banking and commercial point. The famous mines and mills of the Alaska Treadwell Gold Mining Co are located here. Juneau & Douglas Telephone Co connects with these points and with Thane.

TUNNEL SIDING. A flag station on The Alaska Railroad, 52 m n of Seward, the nearest banking point, and 20 s of Hope, its nearest p o.

TUNNELL. A flag station on the White Pass & Yukon Route, 17 m n of Skagway, the nearest banking point and p o.

TUNUNAK. A native village on Cape Vancouver on the west coast of Nelson Island, in the Bering Sea, 230 m sw of St. Michael, the nearest banking point and p o.

TUXCAW. A settlement on the west coast of Prince of Wales Island. Klawock is the nearest p o.

TWENTY MILE RIVER. A flag station on a river of the same name on Turnagain Arm of Cook Inlet and on The Alaska Railroad, 45 m se of Anchorage, the nearest banking point, and 7 s of Hope, its nearest p o.

TYEE. (For names see Territorial Alphabetical List.) A p o, first settled in 1906, on Murder Cove, on the south end of Admiralty Island, at the intersection of Catham Strait and Frederick Sound, 90 m s of Juneau, the capital, 70 w of Petersburg, the nearest banking point, and 15 s of Killisnoo.

TYONOK. Pop 58. (Indians). A settlement and disc p o on Moquawkie Reserve for Indians on Cook Inlet, 120 m n of Seldovia, 400 w of Valdez, 250 nw of Seward, the nearest banking point and 45 sw of Susitna, its nearest p o. Has a native store and U S Public School for Natives.

TZAHARAGAMUT. A native settlement on Kuskokwim Bay, 140 m w of Nushagak, the nearest p o.

UDAKATA. A disc p o on Dutch Harbor, Unalaska Island, 1200 m sw of Valdez, the nearest banking point. Unalaska is the nearest p o.

UGAGUK. A cannery and native settlement on Bristol Bay at the mouth of the Ugaguk River, 450 m (1300 by water) sw of Seward, banking point, 35 s of Naknek, shipping point, and 60 se of Nushagak, p o.

UGASHIK. A cannery and native settlement on Bristol Bay, 450 m (1300 by water) sw of Seward, banking point, 75 s of Naknek, shipping point, and 90 s of Nushagak, p o. A government school for natives is located here.

UKAK. A native settlement on Illiouk Lake, on the mail route from Karluk to Nushagak, 80 m nw of the former. Nushagak, 100 m nw, is the nearest p o.

UNALAKEET. (For names see Territorial Alphabetical List.) Pop 285 mostly natives. A p o and village, first settled in 1887, on the Unalakeet River, 63 m ne of St. Michael, shipping point, 150 by water, 207 by trail se of Nome, banking point. Has a Swedish Evangelical church, and a government reindeer herd and school for natives.

UNALASKA (For names see Territorial Alphabetical List.) Pop 300. A p o and village, also known as Illuiluk, on Unalaska Island and Unalaska Bay, an arm of the Bering Sea, 600 m sw of Seward, the nearest banking point. Has a public school and Greek Catholic and Methodist Episcopal churches. The Jesse Lee Home, a charitable institution for the care of native orphan children, is located here. It is a coaling station and headquarters for the whalers of the Bering Sea. Some gold is found in the vicinity. Steamers from Alaskan and States points stop here. U S Naval Radio Station.

UNANGASHIK. A settlement on the Alaska Peninsula and Bristol Bay, 120 m ne of Sand Point, the nearest p o.

UNGA. (For names see Territorial Alphabetical List.) Pop 313. A p o on an island of the same name, 850 m sw of Seward, the nearest banking point, and 10 s of Sand Point. Mail steamer from Seward and intermediate points leaves Seward the 15th of each month, connection made at Seward with steamer to southeastern Alaska ports and Seattle. Principal industry is cod fishing.

UTKIAVIK. See Barrow.

UYAK. (For names see Territorial Alphabetical List.) A p o on Kodiak Island, 800 m w of Sitka and 50 w of Kodiak. Mail semi-monthly.

VALDEZ. Pop 1050. An incorporated city at the head of Prince William Sound, 320 m due w (air line) of Skagway and 1070 nw of Seattle, Wn. It is the supply center for a big part of Prince Willam Sound but more particularly for the Port Valdez gold district. Besides supplying the mining district adjacent to the town, Valdez is the terminus of the military wagon road to Fairbanks, and is the center of the third judicial division of the territory. Next to Juneau, the federal payroll of Valdez is the largest in the territory. The first gold was discovered in 1894, in the gravels at the mouth of Mineral Creek, but the first real activity came in 1898, when the town of Copper City was established on the site where Valdez now stands. The activity in quartz mining had its inception in 1909, when the Cliff mine was discovered and started to produce steadily. A number of other properties were discovered and the work of development has gone on steadily ever since. Tributary to Valdez is a vast mineral territory, containing many developed copper and gold properties and hundreds of prospects. The first activity of Americans in the copper fields of Prince William Sound was noted in 1897, when the Gladhough claim was staked on the east side of Virgin Bay. This claim became the nucleus of the Ellamar mine, which is shipping regularly. Other developed copper properties tributary to Valdez are the Alaska Copper Corporation at Fidalgo Bay, the Granby Consolidated Mines on Solomon Gulch, the Bonanza mine on Latouche Island, the Three-Man Mining Company at Landlocked Bay, the Cliff mine 8 miles from Valdez. New properties are rapidly being opened up and brought to the producing stage and old ones, thought to be worked out, are being brought back to life again. Valdez has a magnificent landlocked harbor, which is open the entire year. Has a bank, express office, telephone system, electric lights, Congregational, Episcopal and Catholic churches, graded schools, a good hotel, numerous lodging houses, newspaper, salmon cannery, a planing mill, iron works and sheet metal works. Valdez is reached in five days from Seattle and has a steamship service of seven steamers a month. Weekly launch to the Port Wells district.

Alphabetical List of Names

Alaska Emporium (Adam Swan) gen mdse
 Alaska Road Commission T H Huddleston supt D F Millard
 disbursing clk

ALASKA STEAMSHIP CO

Almy Carl U S Comnr
 Anderson Chris
 Ashby Randall E
 Austin Anna
 Austin Edw miner
 Bailey W H miner
 Barrack Geo miner
 Beasley Thos miner
 Beyer W C L fox breeder
 Biggs John H (Valdez Drug Co Inc)
 Blackwell Wm H Mrs

Blum Meyer pres First Bank of Valdez pres S Blum & Co Inc
 Blum S & Co Inc Meyer Blum pres Ernest B Meyer v-pres M
 Brock (Cordova) sec-treas gen mdse
 Brown Lottie Mrs nurse
 Bulkley J Lyman phys
 Burke Jos
 Burns Jas miner
 Butler Geo miner
 Cameron Guy F photo supplies
 Casler Stephen O chf dep U S Marshal
 Church of the Epiphany (Episcopal) Rev Geo J Zinn pastor
 Cliff Mining Co H E Ellis rep
 Clifton Howard G
 Cockerille Henry dentist
 Coleclough D F
 Collins Millard F miner
 Congregational Church Rev Richd D Nicholls pastor
 Conley Wm M (Golden North Hotel)
 Cook John
 Copper River Draying Co (Edw Wood)
 Cuddy Warren N clk U S Dist Court
 DeLano Henry M miner
 Devinney F Jeff
 Dieringer Andw M (Valdez Transfer Co)
 Dieringer Jos C
 Dimond Anthony J (Donohoe & Dimond) Mayor of Valdez
 Donohoe Thos J (Donohoe & Dimond) r Cordova
 Donohoe & Dimond (Thos Donohoe A J Dimond) lawyers
 Dowling A C dep U S Marshal
 Duggan Iva clk U S Atty
 Duggan Sherman U S Atty lawyer
 Egan Clinton J
 Ekimo John miner
 Ellis H E rep Cliff Mining Co
 Emel John M supt Valdez Packing Co
 Emel Jos fishermn Valdez Packing Co
EMPRESS THEATRE (A E Lathrop)
 Erickson John E prospector
 Everyman's Club reading room
 Faucett Geo clk
 First Bank of Valdez Meyer Blum pres M Brock (Cordova) v-
 pres J W Gilson cashr
 Fischer Chas (Merchants Cafe)
 Fraser W S miner
 Fraternal Order of Eagles Valdez Aerie No 1971 C J Todd W P
 Eder Wood sec
 Giles John carp
 Gilson J W cashr First Bank of Valdez
 Golden North Hotel (W M Conley)
 Granby Consolidated Mining Smelting & Power Co
 Granite Gold Mining Co
 Gravelle Aug miner
 Gustafson Frank

VALDEZ—Continued

Haines Bruce
 Hansen Ole
 Hayes Geo eng
 Higson Fred D carp
 Hill Christene Mrs furn rms
 Hokanson Aug
 Holmes P Wm tmstr
 Hoyt C L fox breeder
 Huddleston T H supt Alaska Road Commission
 Independent Laundry (Karl Schmidt)
 I O O F Valdez Lodge No A-6 meets every Monday in Masonic
 bldg 8 p m Chas Koppus N G Chas Naud sec
 Jefferson Jesse D fox breeder
 Kelsey Minnie A Mrs tchr
 Kelsey Robt D cashr
 Knudson Saml wharfinger
 Koppus Chas miner
 Krempler Robt miner
 Larson Eli prospector
 Lathrop A E (Empress Theatre) r Anchorage
 Lathrop Jas M pres Valdez Dock Co
 Lenahan J W sten U S Dist Court
 Liljegren & Ostrom fox breeders
 Liljegren & Wagner fox breeders
 Littlejohn Chas W Mrs
 Love Geo L lawyer sec-treas Love-Whitley Co
 Love-Whitley Co H T Whitley pres G L Love sec-treas gro
 McDonald J M tmstr
 McGilvray John A chf eng
 Marovich Andw M meats
 Masonic—Valdez Lodge No 168 F & A M regular communica-
 tions 1st Wednesday in each month in Masonic hall Guy
 F Cameron W M S O Casler sec
 Mayor of Valdez A J Dimond
 Meals Andw J U-S mineral surv
 Meals Owen E auto dlr
 Meals Wm M
 Merchants Cafe (Chas Fischer)
 Meyer Ernest B v-pres S. Blum & Co Inc
 Millard D Frank disbursing clk Alaska Road Commission
 Millard W Ray
 Minor C J dep U S Marshal
 Morais Oliver lab
 Naud Chas
 Nelson Carl
 Nelson Frank
 Nicholls Richd D Rev pastor Congregational Church
 Olsen Peter miner
 Olson Chas miner
 Olson David miner
 Olson Olaf
 Oslund Christina Mrs furn rms

Pacific Steamship Co
 Palmer W H
 Parsons Lloyd C in chg U S Telg & Cable Office
 Patterson Jas A blksmith
 Peterson Christ boatldr
 Pioneers of Alaska Valdez Igloo No 7 meets every Wednesday
 in Pioneer hall 7:30 p m W H Palmer pres R D Kelsey sec
POST OFFICE, George Robbins Postmaster
 Prince William Sound Water Power Light & Telephone Co
 Walter T Stuart mgr
 Prospector Publishing Co (Chas H Wilcox) publr Valdez Miner
 Quist & Cox fox breeders
 Rankin John prospector
 Reed J L lawyer
 Reynolds House
 Ritchie Elmer E judge U S Dist Court
ROBBINS GEORGE, Postmaster
 Robbins Geo W (Valdez Undertaking Co)
 Romohr Chas C
 Roseen John A dep U S Marshal
 Rucker Maggie Mrs
 St Francis Xavier Catholic Church Rev Wm McMillan S J (Cor-
 dova) pastor
 Sanders Geo pntr
 Schmidt Karl (Independent Laundry)
 Schmidt Max J gen mdse
 Scott Robt
 Scott Selma dep clk U S Dist Court
 Seattle Hotel
 Shafer Robt A miner
 Shafer Wm H boatldr
 Siewertsen Andw fox breeder
 Singletary Alex L raccoon breeder
 Skrivan M M
 Standard Copper Mines Co
 Stanton Michl miner
 Stewart Duncan D
 Stuart Walter T mgr Prince William Sound Water Power Light
 & Telephone Co
 Sullivan H P U S Marshal
 Sullivan Viola Mrs
 Swan Adam (Alaska Emporium)
 Swanson Geo
 Sweet E A tmstr
 Titus C G
 Todd Chester J pntr
 U S Telegraph & Cable Office Lloyd C Parsons in chg
 Ursuline Convent (Nuns of the Ursuline Roman Union)
 Valdez Dock Co J M Lathrop pres
 Valdez Drug Co Inc (J H Biggs)
 Valdez Fire Department J A McGilvray chf eng
 Valdez Packing Co J M Emel supt fish canners
 Valdez Public Library

VALDEZ—Continued

Valdez Public School
 Valdez Transfer Co (A M Dieringer)
 Valdez Undertaking Co (G W Robbins)
 Van Louis fox breeder
 Whalen Wm dairy
 Wheeler S C Mrs
 Whitley Harry T pres Love-Whitley Co
 Wilcey Danl gen mdse
 Wilcox Chas H (Prospector Publishing Co)
 Winkler Esther Mrs weather observer
 Winter Elizabeth E
 Wintler Ralph lab
 Wood Edw (Copper River Draying Co)
 Zharoff Geo
 Zheroff Michl lab
 Zinn Geo J Rev pastor Episcopal Church of the Epiphany

VAULT. A mining settlement on a creek of the same name, 20 m n of Fairbanks, the nearest banking point, and 5 s of Olmes, its p o.

VIRGIN BAY. See Ellamar.

WACKER. (For names see Territorial Alphabetical List.) A recently established p o in Southeastern Alaska, near Ketchikan.

WAINWRIGHT. Pop 100 natives. A disc p o, Eskimo village and government school for natives on Wainwright Inlet of the Arctic Ocean, 700 m ne of Nome, the nearest banking point, 500 ne of Kotzebue and 95 sw of Point Barrow. Has a native co-operative store. Coal is mined on Wainwright Inlet, 6 m from the village, for the government schools at Barrow and Wainwright. Yearly boat to Nome and Seattle. Mail to Tigara.

WALES. (For names see Territorial Alphabetical List.) Pop 136 natives. A p o, missionary post, shipping point and headquarters of the mission reindeer industry, first settled in 1891, on Cape Prince of Wales and Bering Strait, 145 m nw of Nome, the banking point, 70 nw of Teller and 15 nw of York. It has a Congregational mission and government school for natives, established 1890, a U S reindeer station, headquarters for five reindeer herds, and has the second largest settlement of natives in Alaska.

WALLA WALLA. A roadhouse 39 m from Isaacs and 22 nw of Moses' Roadhouse on the winter trail to Nome.

WARMCHUCK. A fishing settlement 40 m se of Petersburg and 90 s of Wrangell, the banking point and nearest p o.

WARREN. A mining settlement on Banner Creek, by which name it is also known, and the Seward Peninsula Ry, near Nome, its banking point and p o.

WASHBURN. A stage station and disc p o, also known as Delta, on the Chitina-Fairbanks winter trail, 249 m n of Chitina and 58 s of Fairbanks. Washington-Alaska Military Cable and Telegraph Office located half mile s, called Little Delta. Mail to Salchaket.

WASILLA. (For names see Territorial Alphabetical List.) A p o and station (formerly Wassila) on The Alaska Railroad, 50 m n of Anchorage, banking point.

WATERFALL. A fishing settlement on the west side of Prince of Wales Island, on Ulloa Channel, 100 m w of Ketchikan, the nearest banking point.

WEARE. See Tanana.

WELLS. A settlement 24 m n of Haines, the nearest p o.

WHITE MOUNTAIN. A settlement settled in 1899, at the base of a mountain of the same name, at the head of steamer navigation on Fish River, 28 m w of Golovin, its p o, and 24 m sw of Council. It is a trading station in winter. The Wild Goose Mining & Trading Co do the principal business and run scows drawn by horses for passengers and freight to Council. Has telephone connection to Golovin, Council and Nome.

WHITE PASS. A telegraph station on the White Pass & Yukon Route at the summit, 20 m n of Skagway, the nearest p o. This is the international boundary line where two flags meet.

WHITNEY. A flag station on The Alaska Railroad, 5 m n of Anchorage, p o and banking point.

WILLOW. A mining settlement on The Alaska Railroad, 30 m nw of Wasilla, nearest p o, and 50 n of Anchorage, banking point.

WILLOW CREEK ROADHOUSE. A roadhouse at the junction of the Valdez-Fairbanks and Chitina-Fairbanks trails, 39 m n of Chitina and 268 s of Fairbanks.

WILSON'S HOT SPRINGS. A popular resort, also known as Big Chena Hot Springs and Chena River Hot Springs, situated on Monument Creek, a tributary of the North Fork of the Big Chena River, 61 m e of Fairbanks, the nearest supply point and p o. All kinds of vegetables are profitably grown, owing to the warmth of the soil in the vicinity of the springs.

WINDHAM. (For names see Territorial Alphabetical List.) A p o and mining settlement on Stephens Passage, 65 m se of Juneau, nearest banking and shipping point, and 60 nw of Petersburg, also a banking point.

WISEMAN. A mining center, also called Right, on the Koyukuk River, 70 m ne of Bettles. Nolan is the p o name.

WOEDSKY. A mining camp, formerly called Hattie Camp, first settled in 1900, 150 m se of Juneau, the capital, and 28 nw of Wrangell. Petersburg is the nearest banking point and p o.

WOLASATUX. A native village on the Yukon River, 200 m ne of Anvik and 10 s of Nulata, nearest p o.

WOLF CREEK. A mining settlement on a creek of the same name, a tributary of Cleary Creek, 24 m se of Fairbanks, the banking point. Chatanika and Cleary are the nearest post-offices.

WOOD ISLAND. A settlement on the island of the same name, 90 m sw of Cordova, banking point. Latouche is the nearest p o.

WOOD RIVER. A trading post on the Tanana River, at the mouth of Wood River, 45 m below Fairbanks, the banking point, and 30 sw of Chena, the nearest p o.

WOODCHOPPER. (For names see Territorial Alphabetical List.) A p o and mining settlement on a creek of the same name at its confluence with the Yukon River, 130 m ne of Fairbanks, banking point.

WOODCHOPPER CREEK. A mining settlement on a creek of the same name near Tofty, its p o.

WOODLAND ROADHOUSE. Located on the Chitina-Fairbanks trail, 26 m n of Chitina and 281 s of Fairbanks.

WOODROW. See Anchorage.

WORTMANS. A roadhouse, telegraph station and disc p o on the Eagle and Fairbanks military road, 336 m s of Fairbanks and 20 n of Valdez, the banking point and p o.



City of Wrangell

WRANGELL. Pop 821. Situated on Wrangell Island, in Etolin Bay, 8 m s of the mouth of the Stikine River, 120 se of Juneau, and 78 nw of Ketchikan, on the steamboat and mail route between Seattle and Skagway. Established by the Russians in 1800, headquarters for Cassiar miners since the boom of 1873, and for all transportation on Stikine River by steamers and canoes. Celebrated for scenery, fishing and hunting. The principal industries are lumbering, fishing, mining and furs. There are 3 churches, 2 schools, hospital, court house, custom house, bonded warehouse, bank, electric light plant, saw mill, canneries, shingle mill, volunteer fire department, 9 general stores, large modern hotel, cable office, U S wireless office, weekly newspaper, U S court commissioner, deputy U S marshal and deputy customs collector.

City Officials

Mayor—John G Grant
Clerk—John E Worden
Marshal—Earl West
Fire Chief—Oscar Carlson
Treasurer—G W Upshaw

Our Policy Is
"Absolute Safety"

Money Transferred to
All Parts of the World

DO YOUR BANKING BUSINESS WITH
Alaska's Branch Banking System

Bank of Alaska

Largest Capitalized Bank In the Territory

Capital, Surplus and Undivided Profits \$225,000

Banks Operated at

ANCHORAGE
SKAGWAY

CORDOVA
WRANGELL

Member American Bankers' Association
U. S. Depository For Postal Savings

OFFICERS

H. D. WALBRIDGE, Chairman.....New York
E. A. RASMUSON, President.....Alaska
R. N. MOYER, Vice-President.....Anchorage
T. S. SCOTT, Vice-President.....Cordova
G. W. UPSHAW, Vice-President.....Wrangell
W. A. PRIES, Vice-President.....Skagway

We Pay 4 Per Cent
On Your Savings

We Rent
Safety Deposit Boxes

WRANGELL ALPHABETICAL LIST OF NAMES

Adams Frank fishermn
 Adolphson Gus fishermn
 Alaska Blue Fox Co fox breeders
 Alaska Packers Assn Louis Schott supt salmon canners
 Alaska Sanitary Packing Co Ora A Brown mgr salmon canners
 Amundson Fred fishermn
 Arctic Brotherhood Camp Wrangell No 20
 Arola Carl fishermn
 Arola Geo fishermn
 Arola Isaac fishermn
BANK OF ALASKA, E A Rasmuson Pres, A E Gurr V-Pres,
H Upshaw Asst Cashr (See adv opp)
 Barlow Frank E supt Point Warde Packing Co
 Barnes F C Co F S Barnes mgr salmon canners
 Barnes Frank S mgr F C Barnes Co
 Barnes Geo H supt Alaska Sanitary Packing Co
 Barthold Fred lab
 Beaudry Fred lab
 Benjamin Chas gen mdse
 Berg Ludwig lab
 Berger Wm
 Bevier Fred fishermn
 Billion Fred fishermn
 Bjorge Ingwald
 Blackington Claude fishermn
 Blake Geo fishermn
 Bon Alaska Mining Co J G Galvin pres
 Borch Chas H soft drinks
 Borge J C
 Bowman Fred fishermn
 Brodd Isaac fishermn
 Bronson Fredk E dep colr U S Customs
 Brown Ora A mgr Alaska Sanitary Packing Co
 Bryant Chas carp
 Burch Frank fishermn
 Burch Wm trapper
 Burke M L
 Campbell Ernest M (St Michael Trading Co)
 Campbell Hiram D dep U S Marshal
 Campbell Leonard M (St Michael Trading Co)
 Campen Walter fishermn
 Canadian Pacific Railway Co Walker & Russell agts
 Card Geo W fishermn
 Carlson Ellery lab
 Carlson Oscar fire chief
 Carlstrom Elmer F
 Carson Guy fishermn
 Case Laurence fishermn
 Case Thos C fishermn
 Case Thos J confr
 Chamber of Commerce L R McCormack pres J W Prichett sec
 Cheney Frank trapper

WRANGELL—Continued

Choquette Darby mariner
 Choquette Fredk mariner
 Choquette John fishermn
 Churchill Leonard M
 Churchill Roy
 City Clerk J E Worden
 City Meat Market (Harry R Coulter)
 Corser Henry P Rev pastor St Philip's Episcopal Ch
 Coulter Harry R (City Meat Market)
 Cowan Geo jeweler
 Crowell M J carp
 Cunningham Saml (Wrangell Photo Show)
 Dalgity Thos
 Daly David fishermn
 Darwell Chas fishermn
 Denningburg Henry
 Diemart Glenn (Wrangell Dairy)
 Diven R J Rev pastor Presbyterian Church
 Ellefsefson Thos fishermn
 Engstrom Adolph gen mdse
 Engstrom Adolph jr clk Adolph Engstrom
 Estella Thos pharm
 Esterland Herman fishermn
 Ferguson Thos fishermn
 Fletcher Wm boatbldr
 Floy Peter fishermn
 Fujita Thos M restr
 Galvin J G pres Bon Alaska Mining Co
 Gartley H W pres Willson-Sylvester Mill Co
 Gil Nicholas lab
 Gingrass Frank E mach
 Gold Fred H fishermn
 Goodrich Frank M millwkr
 Graham David blksmith
 Grant Brigham Y clk
 Grant John G (Wrangell Hotel) Mayor of Wrangell
 Grant Steve miner
 Gray Fred H warden U S Bureau of Fisheries
 Grigwire Edwin F barber
GURR A E, V-Pres Bank of Alaska
 Hall A Ralph electn
 Harmela Michl fishermn
 Harvie S N fishermn
 Haught Philip fishermn
 Healey Maurice fur buyer
 Heinbockle Henry fishermn
 Hertman Geo fishermn
 Hoaglund Willis fishermn
 Hofstad Morten F gen mdse
 Howard Richd miner
 Howey H E (Wrangell Machine Shop)
 Improved Order of Red Men Stikine Tribe No 5

Iverson Peter fishermn
Jackson Robt fishermn
Jakobitz Adolph
Jenkins S W confr
Jensen Peter L fishermn
Jinks Captain Co gen mdse
Johansen Krist J gas eng
Johnson John fishermn
Johnson M O (Wrangell Steam Laundry)
Johnson Ole gen mdse
Jussila Eina fishermn
Jussila Matt fishermn
Kahnart Kurt fishermn
Kalkins A J
Kalkins Edw
Kato T fishermn
Kearsley A B phys
Kyle H B agt Standard Oil Co
Lano Oscar fishermn
Larson Louis L trapper
Lawrence Wm fishermn
Lawrence Wm C
Lee Albt mariner
Leeds C J miner
Leino Oscar fishermn
Lemieux Antime soft drinks
Lewis Clarence
Lewis David mach
Lewis Fred fish buyer
Lewis Wm C lab
Lewis Wm H
Lindman Edw A mach
Lindskog Nels lab
Loftus Mary
Loftus Patk baker
Lorberter Jos
Lovett Jas logger
Loyal Order of Moose Wrangell Lodge No 866
Lucas Wm A carp
Lynch Chas lab
Lynch Edw P
Lyons Edw fishermn
McCormack H O
McCormack Leo R steamship agt
McCormack Peter
McDonald Allen logger
McDonald Chas P logger
McDonald D N fox breeder
McDonald Geo logger
McGregor W P
McKay Bert miner
McKinney Marion (Wrangell Shingle Co)
McLean Geo lab

WRANGELL—Continued

Mantle John cooper
 Matson John
 Moberg Chas fishermn
 Mokler Thos fishermn
 Moore Chas
 Morris Moses lab
 Morrison A J fishermn
 Myers A M clk
 Nelson Chas lab
 Nemi Victor fishermn
 Nevill Jas K warden U S Bureau of Fisheries
 Newell Rube (Wrangell Machine Shop)
 Niblack Island Fox Co fox breeders
 Nore Iver P millwkr
 Northrop Geo
 Nussbaumer Nicholas foremn
 Olson John fishermn
 Olson Louis fishermn
 Palmer Orville C (Wrangell Electric & Power Co)
 Parrott Walter E
 Parsons Nick fishermn
 Patenaude Leo C cigars
 Patterson Wm clk
 Pellincu Matt fishermn
 Perchmont Wm
 Phillips Harry lab
 Platter Jesse clk
POST OFFICE, John W Steadman Postmaster
 Presbyterian Church Rev R J Diven pastor
 Prescott Elmer J setter
 Pritchett Jas W publ'r Wrangell Sentinel
RASMUSON E A, Pres Bank of Alaska
 Retzloff Louis fishermn
 Rhinehart J A fishermn
 Rhinehart Lloyd fishermn
 Roberts Wm fishermn
 Ronning Jorgen fish buyer
 Rossini Brando miner
 Russell C W (Walker & Russell)
 St Leo's Catholic Church
 St Michael Trading Co (L M and E M Campbell) gen mdse
 St Philip's Episcopal Church Rev Henry P Corser pastor
 Sanborn-Cram Co Adolph Hall mgr fish pkrs
 Schott Louis supt Alaska Packers Assn
 Scribner Hemphill & Scribner fox breeders
 Shadesty Walter eng
 Shangle F E trapper
 Shangle Rolla trapper
 Shurick Shelby C phys
 Sihoola John fishermn
 Sinclair Donald gen mdse
 Sinclair Wallace

Smith Fannie Mrs
Smith Geo fishermn
Soarikoski John fishermn
Soarikoski Urho fishermn
Sornberger Wesley carp
Sorset Arnt
Spalding Frank trapper
Standard Oil Co H B Kyle agt
STEADMAN JOHN W, Postmaster
Steele David
Stolpe Gus fishermn
Tantow Herman fishermn
Taylor Wm firemn
Thomas Wm G U S Comnr lawyer
Tongass Logging Co
Towers John logger
Tucker Bert bricklyr
Twombly Chas fishermn
Union Bay Fisheries Co
U S Cable Office
U S Commissioner Wm G Thomas
U S Customs Fredk E Bronson dep colr
U S Marshal H D Campbell
Upshaw G W City Treas
UPSHAW H, Asst Cashr Bank of Alaska
Walberg Robt fishermn
Walker J (Walker & Russell)
Walker & Russell (J Walker C W Russell) gen mdse
Waterbury Frank bldg contr
Waters Walter C
Watson Lewis T plmbr
Weber C E
Wedo Chris miner
West Earl city marshal
Wickstrom Oscar fishermn
Wigg Fredk
Wigg Lorena
Wigg Louis lab
Wigg Marcus lab
Willet Oscar carp
Willson-Sylvester Mill Co H W Gartley pres
Wheeler Jas H (Wrangell Drug Co)
Worden John E City Clerk
Wrangell Dairy (Glenn Diemart)
Wrangell Drug Co (Jas H Wheeler)
Wrangell Electric Light & Power Co (Orville C Palmer)
Wrangell Hospital
Wrangell Hotel (John G Grant)
Wrangell Machine Shop (Rube Newell H E Howey)
Wrangell Photo Show (Saml Cunningham)
Wrangell Sentinel (weekly) J W Pritchett pubr
Wrangell Shingle Co (Marion McKinney)
Wrangell Steam Laundry (M O Johnson)

YAKUTAT. (For names see Territorial Alphabetical List.) Pop 200, mostly natives. A p o situated on Yakutat Bay, 216 m nw of Juneau, the capital and banking point. A large salmon cannery is located here. The Yakutat Southern Ry runs 11 m se to a fishing settlement of natives at mouth of Situck River. There is a Swedish Evangelical Mission and a government school for natives. The making of Indian baskets and curios is quite an industry. Mail boat connection with Seattle every 10 days except in winter.

YENTNA. (For names see Territorial Alphabetical List.) A recently established p o in Central Alaska, near Talkeetna.

YES BAY. A cannery settlement and U S Bureau of Fisheries salmon hatcheries, 40 m n of Ketchikan, the nearest banking point, and 20 n of Loring. Mail to Ketchikan, of which Yes Bay is a sub p o.

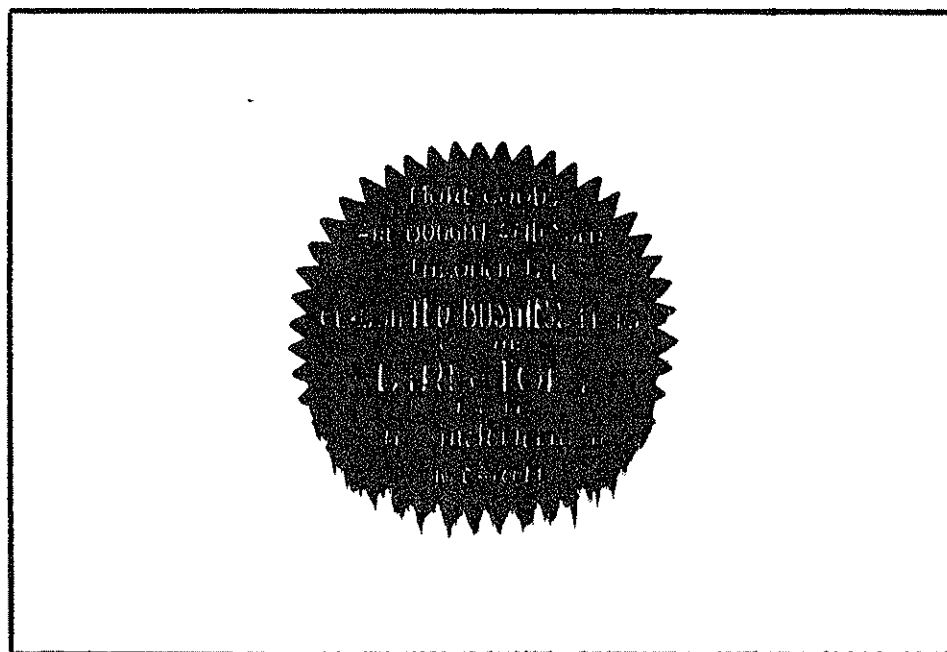
YORK. A disc p o on Cape York and Bering Sea, 120 m nw of Nome, the banking point and 15 se of Wales, nearest p o.

YOSTS. A roadhouse and telegraph station (called McCallum) on the Delta River and Chitina-Fairbanks trail, 157 m n of Chitina, 150 s of Fairbanks, the banking point, and 78 n of Gulkana, the nearest p o.

YUKAGAMUT. See Ikogmut.

YUKOKATAT. An Indian village and disc p o, first settled in 1900, on the Yukon River, 300 m (by winter trail) w of Fairbanks, the nearest banking point, 140 w of Tanana, 24 w of Ruby, its nearest p o.

YUKON. See Fort Yukon.



Alaska Territorial Alphabetical List of Names

- Abbert Horace rancher Afognak
 Abbott Nina E Mrs Douglas
 Abercrombie Pkg Co fish cannery
 Abercrombie
 Abrahams Gus miner Circle
 Abrahamson Jas lab K C Corp Kennecott
 Acevedo Louis miner K C Corp Kennecott
 Adamick Martin miner Circle
 Adams Edw A rancher Haines
 Adams Jas lab The ARR Matanuska
 Adams John H carrier P O Tanana
 Adams Saml lab K C Corp Kennecott
 Adamson Nels miner Kennecott
 Africh John miner Douglas
 Agamalian John fox breeder Latouche
 Aguiño Julian lab K C Corp Kennecott
 Ahrenstedt H J postmaster Point Ashley
 Aitken Thos gen mdse McGrath
 Akert Arnold H assayer K C Corp Kennecott
 Alaska Consolidated Canneries Chomley
 Alaska Fish Salting & By-Products Co fish cannery Killisnoo
 Alaska Gastineau Mining Co Thane
 Alaska Marble Co Shakan
 Alaska Packers Association fish cannery Chiguik
 Alaska Packers Association fish cannery Kenai
 Alaska Packers Association fish cannery Loring
 Alaska Pioneers Home Sitka
 Alaska Rivers Navigation Co (Langley Wallace Geo Green) McGrath
 Alaska Steamship Co L W Kilburn agt Douglas
 Alaska Treadwell Gold Mining Co McGrath
 Albert Geo gen mdse Unangashik
 Albert Horace rancher Kodiak
 Alitak Pkg Co fish cannery Alitak
 Allen Chas B miner Eureka
 Allen Jesse miner Wiseman
 Allen Otto lab K C Corp Kennecott
 Allen Perle B rancher Haines
 Aller Henry D agt U S Bureau of Fisheries St Paul Island
 Allis W C asst U S Bureau of Fisheries St Paul Island
 Alton Thos janitor The ARR Curry
 Amerman Geo lab The ARR Matanuska
 Amero A W prospector Beaver
 Andaiak Danl miner K C Corp Latouche
 Andees Henry rancher Haines
 Anderson Albt L eng Douglas
 Anderson Alyce gen mdse Ninilchik
 Anderson Carl B lab K C Corp Kennecott
 Anderson Chas carp Kodiak
 Anderson Christ Kodiak
 Anderson Clement miner Rampart
 Anderson Einar Eureka
 Anderson Ellis prospector Beaver
 Anderson Geo McCarthy
 Anderson Halvor lab K C Corp Kennecott
 Anderson Hans billiard rooms Sitka
 Anderson Julius Kodiak
 Anderson J P miner Circle
 Anderson Nels Treadwell
 Anderson R V U S comnr Seldovia
 Anderson S Juanita gen mdse Seldovia
 Anderson Wm fishermn Hot Springs
 Angelis Michl miner Wiseman
 Angerman B watchmn K C Corp Latouche
 Angerman Fritz mach K C Corp Latouche
 Angus Mary drsmkr Eagle
 Anicich Jos (Tower House) Tanana
 Anthony A Harry Fort Yukon
 Antonsen T miner Rampart
 Anway Chas rancher Haines
 Applebaum Saml gen mdse Iditarod
 Applegate Saml Unalaska
 Arctic Brotherhood Camp Sitka No 6 Sitka
 Argall John electn K C Corp Kennecott
 Armstrong Chas miner Circle
 Armstrong Karl U S dep Marshal Kodiak
 Arnold Frank Beaver
 Arnott J M lab K C Corp Kennecott
 Arnuff Haarvei postmaster Poorman
 Ashball Harry pntr Sitka
 Ashball Harry Mrs hotel Sitka
 Astoria & P S Canning Co fish cannery Excursion Inlet
 Astoria & Puget Sound Canning Co fish cannery Hoonah
 Atka Island Native Store gen mdse Atka Island
 Axelson E M postmaster and U S comnr Yakutat
 Baaske Hans miner K C Corp Latouche
 Bacatarides Andw miner K C Corp Latouche
 Bach Frank Douglas
 Backlund & Hall gen mdse Kotzebue
 Backstrom Gust miner Kennecott
 Baggen Geo emp AGMCo Thane
 Bahrt Henry L Sitka
 Bailey Geo soft drinks Tanana
 Bailey Geo E foremn The ARR Matanuska
 Bain Jas N farmer Hot Springs
 Bainbridge Andw M U S comnr Livengood
 Bank A C miner K C Corp Latouche
 Banta H O Haines
 Banward G E fox breeder Sitka
 Barnes Florence Mrs postmaster Copper Center
 Barnes F C Co fish cannery Lake Bay
 Barnhart Ole gen mdse Tuluwicksok
 Barrette Albt Hot Springs
 Barron Elizabeth Mrs gen mdse Sitka
 Barron J T postmaster Hunter
 Bartello Albin mariner Douglas
 Bassett F L postmaster Loring
 Batchelor L F lab The ARR Matanuska
 Batone Chas reprmn K C Corp Latouche
 Bauer H A Sitka
 Bauer Wm J Ruby
 Baumaun Wm E warden U S Bureau of Fisheries Afognak
 Baxter W F eng K C Corp Kennecott
 Bayless Otto freighter Circle
 Beaton John Flat
 Beaton & Nelson (Wm Beaton N Nelson) mining Circle
 Beaton Wm (Beaton & Nelson) Circle
 Beaudreau P C Hyder

Alaska Territorial List of Names—
Continued

Beck Geo J Rev pastor Presbyterian Church Hoonah
 Beck John lab K C Corp Kennecott
 Bedell Harriett M missionary Stephens Village
 Beerle Albt cook The ARR Matanuska
 Beggs Robt restr Eagle
 Bell John lab The ARR Matanuska
 Bellinberg Chas miner Circle
 Bellos Jas lab The ARR Matanuska
 Belts Wm lab AGMCo Thane
 Bennett Frank trapper Circle
 Bennett J T poultry breeder Kodiak
 Bennett Vernon fox breeder Ellamar
 Benson Chas Douglas
 Benson Danl emp K C Corp Latouche
 Benson Edw boatbldr Metlakatla
 Benson John carp Haines
 Benson M Sitka
 Beresford Chas F miner Haines
 Berg C A foremn The ARR Indian
 Berge John miner K C Corp Latouche
 Berglund Geo trapper Fot Yukon
 Bergman Emil mail carrier Rampart
 Bergman Erick miner Rampart
 Bergman Oscar farmer Hot Springs
 Bering River Coal Co mining Katalla
 Bering Sea Packing Co fish canners Herendeen Bay
 Bernetti Dominick Koyukuk
 Bethel Fredk B lab K C Corp Latouche
 Betsch Chris (Betsch & Delbar) Fortuna Ledge
 Betsch & Delbar gen mdse Fortuna Ledge
 Bictitos Andw miner K C Corp Latouche
 Biederman Adolph mail carrier Circle
 Biederman Edw gen mdse Charlie Creek
 Big Four Co mining Ruby
 Billings Wm trapper Beaver
 Birch G H postmaster Dan Creek
 Birch G W timekpr K C Corp Kennecott
 Birch Stephen postmaster Kennecott
 Bird Helen C Mrs weather observer Akiak
 Birkland Thos expmn Sitka
 Bishop Bish trapper Fort Yukon
 Bishop Fred gen mdse Sleetmute
 Bjarnson Wm L mech Katalla
 Blackburn & Eldridge gen mdse Tokotna
 Bland J E Douglas
 Blanton Walter Hyder
 Blazic Rupert tlr Haines
 Blinn John Kodiak
 Bloom Peter miner Circle
 Bloomfield Charlotte E weather observer Barrow
 Blum Louis cook The ARR Indian
 Boatman Clarence trapper Hot Springs
 Bockfinger E M lab The ARR Matanuska
 Boerner Herman mach Douglas
 Bojanich Geo miner Wiseman
 Bojanich Steve miner Wiseman
 Bolgen Christian U S comnr Ophir
 Bolshanin N E dep colr in chg U S Customs and U S Comnr Unalaska
 Bonahan L E U S Comnr Bethel
 Bos Lawrence lab K C Corp Latouche
 Boshkofsky Nikolai Afognak
 Bowers Jos logger The ARR Indian
 Bowlby Geo B phys U S Bureau of Fisheries St Paul Island
 Bowman J W cond The ARR Chase
 Boyer E H dep U S Marshal Chitina
 Boyer Marie Co Chitina
 Boyer Milton brkmn The ARR Browne
 Boyle Chas lab The ARR Matanuska
 Boyle Hugh miner Wiseman
 Boyle John C U S Comnr Circle
 Boyle John C gen mdse Woodchopper
 Boyle Jos lab The ARR Matanuska
 Brado E Mrs wtrs K C Corp Latouche
 Brady Irene postmaster Golovin
 Brady John G Sitka
 Brady Thos miner Wiseman
 Braum Jos N warden U S Bureau of Fisheries Ikatan
 Bredvick Nels gen mdse Sitka
 Breedman S O Chitina
 Breen Patk trapper Hot Springs
 Brendible Chas Metlakatla
 Brentlinger Fred postmaster Woodchopper
 Brien David wtr The ARR Curry
 Brine Wilson W clk U S local insp St Michael
 Broad Helen Mrs baker Eagle
 Brokovich Michl eng K C Corp Latouche
 Brook C Richd dep U S Marshal Fort Yukon
 Brooker Edgar U S Comnr Kantishna
 Brower C D U S Comnr Barrow
 Brown A L gen mdse Craig
 Brown A O U S Comnr Haycock
 Brown Box & Lumber Co Craig
 Brown Cassius lab The ARR Matanuska
 Brown David Treadwell
 Brown E M Circle
 Brown E W Circle
 Brown Harry lab K C Corp Kennecott
 Brown H R gen mdse Talkeetna
 Brown Jas (Schaefer & Brown)
 Brown Jos W jailor Tanana
 Brown Saml trapper Hot Springs
 Brown Wm L postmaster False Pass
 Browning Chas M U S Comnr Hot Springs
 Bruer John lab K C Corp Kennecott
 Bruno Wm lab K C Corp Kennecott
 Bryant Albt miner Eagle
 Bryant David jr Eagle
 Buchanan R A Rev pastor First Presbyterian Ch Sitka
 Buckley Bart miner Ruby
 Buckley H fox breeder Latouche
 Burglin A A gen mdse Crooked Creek
 Burke Grafton phys Fort Yukon
 Burnett Inlet Pkg Co fish canners Burnett Inlet
 Burnham T H gen mdse Fort Yukon
 Burns T H postmaster Tokeen
 Burrows Jas M game warden Kantishna
 Burton Sidney boatbldr Metlakatla
 Buss Thos trapper Hope
 Buss Walter trapper Hope
 Cahill W E Treadwell
 Cairns Helen tchr Wiseman
 Callander Fred lab K C Corp Kennecott
 Callham Wm baker Rampart
 Calosidis M T oiler K C Corp Latouche
 Calvery Patk miner K C Corp Latouche
 Campbell Anna B postmaster Sulzer
 Campbell F A miner Richardson
 Campbell Geo Ruby
 Campbell Jas R sec foremn Bird
 Campbell John lab The ARR Matanuska
 Campbell Neil R emp K C Corp Kennecott
 Campbell Saml postmaster Long
 Canter Andw trapper Hot Springs
 Cantrell W R firemn The ARR Eska
 Cappers S N lab The ARR Curry
 Card Geo Klawock
 Carlisle Packing Co fish canners Kvichak
 Carlson Chas gen mdse Akiak
 Carlson C L miner Beaver
 Carlson John Eagle

- Carlson John L & Co gen mdse Auk Harbor
 Carlson Oscar lab K C Corp Kennecott
 Carlson Peter W postmaster Ophir
 Carney W H soft drinks Tanana
 Carpenter Louis miner Beaver
 Carroll Frank H Copper Center
 Carroll Jas trapper Fort Yukon
 Carson John emp K C Corp Kennecott
 Carson & Townsend (J G Carson F R Townsend) fox breeders Hoonah
 Carter Thos C U S Comnr Beaver
 Carver Lewis H postmaster Nizina
 Carvey L H Shushanna Junction
 Case C P U S Comnr Tenakee
 Casey Albt cook The ARR Broad Pass
 Cashell Edw Douglas
 Cashen Jerry millmn Douglas
 Cashen Thos Douglas
 Cashman Nellie Wiseman
 Cathedral of Archangel St Michael (Russian Orthodox) Sitka
 Catholic Church Ruby
 Catholic Church Sitka
 Cattanach Geo foremn K C Corp Kennecott
 Central Roadhouse (Henry A Stade) Circle
 Chadwick Jas R firemn The ARR Eska
 Chamberlain Thos emp K C Corp Latouche
 Chambers Colwell gen mdse Seldovia
 Chambers E W oiler K C Corp Latouche
 Chance Sylvester weather observer Noorvik
 Chapman John W Rev postmaster Anvik
 Chase Thos H postmaster Taylor
 Chase & Kruger gen mdse Anvik
 Cheatham L S foremn K C Corp Latouche
 Chester H S gen mdse Golovin
 Chester Jos H gen mdse Golovin Bay
 Chichagof Mining Co Chichagof
 Chickenoff Zack lab K C Corp Latouche
 Chisel A S rancher Haines
 Chisel Jos H gen mdse Haines
 Chitina Cash Store J S M Nelson mgr gen mdse Chitina
 Chitina Hotel (Mrs E Griffith) Chitina
 Chititu Trading Co gen mdse McCarthy
 Chrisanth Nick lab K C Corp Kennecott
 Christensen Martin miner Wiseman
 Christoe David Douglas
 Christoe Jas Douglas
 Circle Hot Springs (Frank Leack) Circle
 Clark A P lab K C Corp Kennecott
 Clark W A Homer
 Clarke Harry A (Clarke Hotel) postmaster Ruby
 Clarke Hotel (H A and Mary Clarke) Ruby
 Clarke Mary (Clarke Hotel) Ruby
 Clarkin J F gen mdse Nizina
 Clausen Francis lab K C Corp Latouche
 Clay Cigar Store (Tex Clay) Douglas
 Clay Tex (Clay Cigar Store) Douglas
 Clayton Chas rancher Haines
 Clegg & Clothier gen mdse Hyder
 Cleghorn Walter lab The ARR Matanuska
 Clemens O C miner Rampart
 Cleveland Harry miner Gulkana
 Clever Paul Ruby
 Climie Jas miner Rampart
 Cloes Harry G game warden McCarthy
 Clough Fannie L postmaster McGrath
 Cohen Edw Kodiak
 Coffin Rollin miner Eagle
 Colburn Edw fox breeder Haines
 Cole Chas E M postmaster U S Comnr Jack Wade
 Cole Mary M postmaster McCarthy
 Coleman John miner Eureka
 Collins May cook Eagle
 Columbia River Packers Association fish canners Chignik
 Colwick Wm C agt The ARR Healy
 Commercial Hotel (Peter Kennedy) Chitina
 Coney Fred H reprmn The ARR Eklutna
 Conom Gust lab The ARR Matanuska
 Conrad H M dep U S Marshal Latouche
 Cook C L tinsmith Tanana
 Cook Frank agt The ARR Holy Cross
 Cook Jay miner Rampart
 Cook Noble miner K C Corp Latouche
 Cook V D postmaster Dolomi
 Cook W M fox breeder Sitka
 Coombs Chauncey C warden U S Bureau of Fisheries Haines
 Cooney John J lab The ARR Matanuska
 Corbett Thos A firemn The ARR Curry
 Corey John lab The ARR Matanuska
 Cornell John miner Circle
 Corner Auto Transfer Co Hyder
 Corning David Ruby
 Costello John lab K C Corp Latouche
 Cote Saml farmer Hot Springs
 Cotsabasis Marian cook K C Corp Latouche
 Cox Henry roadhouse Poorman
 Cox Nathan G billiards Livengood
 Coyle Denny miner Ruby
 Craft Savine L U S insp of boilers St Michael
 Crane Allen miner Wiseman
 Crane S N Ruby
 Crawford Wm Hyder
 Creedon Timothy poultry breeder Haines
 Cribbee W J U S Comnr Napimute
 Crites Clarence M Meehan
 Crockett Wm miner Rampart
 Crosslet Alfred T postmaster Livengood
 Crossman Walter miner Circle
 Cuaresma Marian cook K C Corp Latouche
 Culbertson Richd tchr U S Bureau of Fisheries St Paul Island
 Cummings A B hotel mgr The ARR Curry
 Cunningham Geo B gen mdse Unga
 Cunningham G R gen mdse Sand Point
 Curry Jos cattle breeder Haines
 Curtis Waldo C trapper Fort Yukon
 Cvorovich Paul lab K C Corp Latouche
 Czubay Walter J wtr The ARR Curry
 Dahn J C Tanana
 Dalen John lab K C Corp Latouche
 Dalton Jos miner Eureka
 Daly Bernard lab The ARR Indian
 Dalziel Winnifred tchr government sch Fort Yukon
 Dan Creek Mining Co Shushanna Junction
 Danielson Eric foremn K C Corp Kennecott
 Danielson Geo lab K C Corp Kennecott
 Danielson Magnus miner Eagle
 Davenport P G Ruby
 Davidson A opr K C Corp Kennecott
 Davidson C A foremn The ARR Matanuska
 Davis E R Windham

**Alaska Territorial List of Names—
Continued**

Davis John boatldr Metlakatla
 Davis L M gen mdse Dolomi
 Dawson Wm N Kenai
 Day Jos Tenakee
 Dayton A J (Red Cross Drug Co) U
 S Comnr Ruby
 DeArmond R W U S Comnr Sitka
 Debien Chas trapper Beaver
 deBlondeau J H strawberry grower
 Haines
 Deep Sea Salmon Co fish cannery
 Hoonah
 DeGrande S rancher Haines
 Deitsch Geo F lab The ARR Meta-
 nuska
 Delamater H H U S Comnr Hoonah
 Delon Philip I postmaster Holy Cross
 DeMar Fred Fort Yukon
 Demeree E J postmaster Tyee
 DeMichale Michaele Fort Yukon
 Demmert Bros gen mdse Shakan
 Demmert Geo postmaster Bayview
 Dempsey Michl lab The ARR Mata-
 nuska
 Demytt Leo J Douglas
 Denek Christ lab K C Corp Kennecott
 Denhart Paul (Stewart & Denhart)
 Richardson
 Dennis Peter lab K C Corp Kennecott
 Denny L D eng The ARR Healy
 Depue R dep U S Marshal St Michael
 Deschamps J lab K C Corp Kennecott
 Desormier Jas trapper Beaver
 DeVane Thos J Ruby
 DeVane Willis gen mdse Ruby
 deWeiss Henri janitor K C Corp La-
 touche
 DeWitt Lawrence miner Gulkana
 Diederick Theo postmaster Tanana
 Diggs Robt postmaster Jonesville
 Dillon J S cond The ARR Curry
 Dimidoff T F Sitka
 Dineen John storekpr K C Corp Ken-
 necott
 Dodd John Nolan
 Dodge Wm Hoonah
 Doherty John miner K C Corp Kenne-
 cott
 Dolan Peter lab The ARR Matanuska
 Dome Creek Mining Co Eagle
 Domingue Frank Douglas
 Donaldson Carl lab K C Corp La-
 touche
 Donnelly Harry gen mdse Iditarod
 Donovan John J U S Comnr Healy
 Forks
 Doogan Theo J Douglas
 Dorey Fred Hyder
 Dorwin W J pumpmn The ARR Mon-
 tana
 Dotson Theresa Mrs postmaster Am-
 alga
 Doty & Linton gen mdse Baranof
 Douglas Dairy Douglas
 Douglas Frank lab K C Corp Kenne-
 cott
 Douglas Steam Laundry Douglas
 Douglas Wm C shift boss K C Corp
 Kennecott
 Dove Theo miner Eagle
 Dow Peter miner Wiseman
 Downer A J agt The ARR Girdwood
 Drager Karl A logger Kodiak
 Drain Fredk in chg St Luke's Indian
 Mission Saichaket
 Dreher Andw gro Haines
 Driffeld F C postmaster Unga
 Drossis Agelos lab The ARR Mata-
 nuska
 Duban Saml (English Feger & Du-
 ban) gen mdse Hughes
 Dudley Clarence dep U S Marshal
 Eagle
 Dugan R H Hot Springs
 Dugdell W H fox breeder Katalla
 Duggin Edwin J miner K C Corp La-
 touche
 Dull John A Eek Island
 Duncan John miner Rampart
 Dunklee Marie T postmaster Sitka
 Dunn John W lawyer Ruby
 Durkin Harry Ruby
 Duvall J Wm logger The ARR Indian
 Dwyer J J dep U S Marshal Brooks
 Dwyer V L postmaster gen mdse
 Strelna
 Eagan Danl F (Eagan & Griffin)
 Meehan
 Eagan & Griffin (D F Eagan E F
 Griffin) gen mdse Meehan
 Eagle-Dawson Stage Line (John B
 Powers) Eagle
 Eagle Trading Co (Clyde A Thomp-
 son) Eagle
 Eagles Hall Ruby
 Early O N gen mdse Yakutat
 Eaton Geo miner Wiseman
 Eaton Perry Kodiak
 Eberly & Arnold lbr mfrs Katalla
 Edwards Albt E gen mdse Fortuna
 Ledge
 Edwards A dockmn AGMCo Thane
 Edwards Bros gen mdse Cripple
 Eggert W C mach K C Corp Kenne-
 cott
 Elden John dep colr in chg U S Cus-
 toms Fortymile
 Ellamar Mining Co gen mdse Ellamar
 Ellingson Knute miner Wiseman
 Elliott W D agt The ARR Matanuska
 Ellis Jesse H mech K C Corp Kenne-
 cott
 Emard M gen mdse Richardson
 Emerson Oscar miner Tanana
 Engberg Victor carp K C Corp La-
 touche
 Enge John (Treadwell Bakery) Tread-
 well
 Englar D R gen mdse Chitina
 English Feger & Duban (W D Eng-
 lish Los Freger Sam Duban) gen
 mdse Bettles
 English Wm D (English Feger & Du-
 ban) postmaster Bettles
 Envali Gus eng The ARR Indian
 Episcopal Church Rev Geo E Howard
 pastor Sitka
 Estabrook Harvey Hot Springs
 Evans Jas postmaster Metlakatla
 Evans John W Koyukuk
 Evans Thos miner Rampart
 Everman B J lab The ARR Matanuska
 Erickson Aaron firemn K C Corp Ken-
 necott
 Erickson A F postmaster Latouche
 Erickson Eva wtrs The ARR Curry
 Erickson John B miner K C Corp
 Kennecott
 Erickson Victor miner Eureka
 Ersey Michl miner Bonfield
 Erskin Alvin C Kodiak
 Erskin E Hildred Mrs tchr Kodiak
 Erskin W J Co gen mdse Kodiak
 Eureka Trading & Saw Mill Co lbr
 Kake
 Everson Emil (Olson & Everson)
 Eureka
 Faddis W R gen mdse McCarthy
 Faherty Jas Douglas
 Fairbanks Richardson Stage (Roy
 Lund) Richardson
 Falsted John J Afognak
 Farley Michl Wiseman
 Farrell Jas H gen mdse Iditarod
 Feger & Duban (Los Feger Saml Du-
 ban) gen mdse Koyukuk
 Feger Los (English Feger & Duban)
 Bettles
 Felder & Gale gen mdse Akiak
 Felder John W (Felder & Gale) post-
 master Bethel
 Fenton Warren G U S Mineral surv
 Eska

- Ferguson Frank R postmaster Shung-nak
 Ferrin Al (Pratt & Ferrin) Hope
 Ferris Jas miner Beaver
 Ferry Hugh lab The ARR Matnуска
 Fese Leo miner K C Corp Latouche
 Feusi John furn Douglas
 Fidalgo Island Packing Co fish canners Herendeen Bay
 Fields G H Klawock
 Filson Thos Sitka
 Fince Steve miner K C Corp Kennecott
 Fink Andw A trapper Hot Springs
 Finley S B car insp The ARR Healy
 Finnan Carol T emp K C Corp Kennecott
 First Presbyterian Church Rev R A Buchanan pastor Sitka
 First Territorial Bank of Alaska P R Bradley (Juneau) pres Douglas
 Fish Al trapper Eagle
 Fish Frank trapper Eagle
 Fish Hatchery (Territorial) F R Lucas supt Afognak
 Fisher D J lab The ARR Healy
 Pitt John Stephens Village
 Fitzpatrick John lab K C Corp Latouche
 Flat City Hotel Flat
 Fleming Geo A fox breeder Latouche
 Foley Harry miner Wiseman
 Foord Jas C postmaster Myers Chuck
 Footmen John trapper Hot Springs
 Ford W roadhouse Hot Springs
 Forrest Earle M postmaster Akiak
 Forsell C A timekpr K C Corp Kennecott
 Fort Egbert Post J P O'Callaghan caretkr Eagle
 Foss Harold postmaster Iliamna
 Foster Frank Fort Yukon
 Foster Wm trapper Hot Springs
 Fox Walter C phys Eagle
 Foy Geo miner Beaver
 Frame Grover Hyder
 Frame John W U S Comnr Hyder
 Frame J Wm Chitina
 Frank Carl Wiseman
 Frank Jas R Eureka
 Franklin Packing Co fish canners Latouche
 Fransen G Wiseman
 Freeburn Jas L postmaster Chichagof
 French Carl Haines
 Frifield F C U S Comnr Unga
 Frisk Peter trapper Circle
 Fritsch Aug miner Eagle
 Froelich Arthur (Froelich & Kohmer) Eagle
 Froelich & Kohmer (A Froelich H Kohmer) mining Eagle
 Fujita Thos M restr Wrangell
 Fullerton Jas E gen mdse Iditarod
 Gaither B W missionary (Episcopal) Eagle
 Gale J W pumpmn The ARR Canyon
 Galen Jas Chitina
 Gallagher H P agt The ARR Gilmore
 Gallivas F A J gen mdse Douglas
 Gamble John E Sitka
 Garhom Henry rancher Haines
 Garland M firemn The ARR Curry
 Garn Adolph W Douglas
 Garn Mary Douglas
 Garrett Wm E U S Comnr Rampart
 Garrison D J whsemn K C Corp Latouche
 Garwood Chas Chitina
 Gastonguay Emil M mgr AGMCo Thane
 Gebich Eli miner K C Corp Kennecott
 Gelineau J Richd (Sealey & Gelineau) Latouche
 Georgeson C C in chg U S Experimental Station Sitka
 Georgeson Margaret T weather observer Sitka
 Gerald Knute Ruby
 Gerhart C B gen mdse Pymute
 Gestner Mack A tir Haines
 Getchell Geo dep U S Marshal Douglas
 Gibbon Frank firemn K C Corp Latouche
 Gibbs Austin lab The ARR Matnуска
 Gibbs Bertha cook The ARR Matnуска
 Gibson Jas Mrs Indrs Haines
 Gilbert Wm miner Nolan
 Gilkey Norman F postmaster Treadwell
 Gill John L postmaster Cape Fanshaw
 Gill M S miner Eureka
 Gill W T clk The ARR Curry
 Gillespie F B phys Kennecott
 Gillespie G E assayer K C Corp Latouche
 Gillis M (Mahan & Gillis) Livengood
 Gillman M A foremn The ARR Matnуска
 Gilmore T J foremn The ARR Matnуска
 Giroux Al Hot Springs
 Gish Victor S postmaster Mile Seven
 Glacier Creek Gold Mining Co H G Knight mgr Haines
 Glacier Mining Co Haines
 Glad Harold mach K C Corp Kennecott
 Goddard A C rancher Haines
 Goddard Fred L sanitarium Sanitarium
 Goetz John Rampart
 Gold Bullion Mining Co Wasilla
 Goodwick S W cook The ARR Broad Pass
 Grahn Carl emp K C Corp Kennecott
 Grammer L E U S mineral surv Kodiak
 Grand The (Geo Mutchler) soft drinks Flat
 Grant Frank lab The ARR Indian
 Graves F H reprmn K C Corp Latouche
 Graves H A Treadwell
 Gray Arthur B foremn The ARR Healy
 Gray Felix U S Comnr Douglas
 Gray Nicholas Kodiak
 Green Butte Mine McCarthy
 Green Danl (Hot Springs Roadhouse) Hot Springs
 Green Geo (Alaska River Navigation Co) McGrath
 Green Jas R miner Eureka
 Green V O dep U S Marshal Wiseman
 Green W E U S Comnr McGrath
 Greene B A Mrs opr The ARR Broad Pass
 Greene W H agt The ARR Broad Pass
 Greenfield R A reprmn K C Corp Latouche
 Gregoriouff Sanafont carp Afognak
 Griffin A J postmaster Richardson
 Griffin Edw F (Eagan & Griffin) Meehan
 Griffin Geo W U S Comnr Richardson
 Griffith Elizabeth postmaster Gulkana
 Griffith E Mrs (Chitina Hotel) Chitina
 Grosvold Andw postmaster Sand Point
 Gruber Frank miner K C Corp Latouche
 Grubich Michl miner K C Corp Latouche
 Grundler Gus Douglas
 Guerin J R Douglas
 Gularthe Manuel Flat

**Alaska Territorial List of Names—
Continued**

Gulkana Trading Co gen mdse Gul-
kana
 Gullufsen Geo lab K C Corp Latouche
 Gunz Emma nurse Fort Yukon
 Gurtler E O gen mdse Montevideo
 Guy Job shift boss K C Corp La-
touche
 Guy's Drug Store (Guy L Smith)
Douglas
 Haarvie Arnulf gen mdse Poorman
 Hackmeister E Douglas
 Hadley J P postmaster Kotzebue
 Hagan Jas dep U S Marshal Nenana
 Haggerty Valentine Haines
 Haines Hotel (Stephen Sheldon)
Haines
 Haines Packing Co fish canners Let-
inkoff
 Haines Telephone Co Haines
 Haldane B A gen mdse Metlakatla
 Haley Chas tmstr Sitka
 Haley Jas (Haley & Strum) Fort
Yukon
 Haley Julia curios Sitka
 Haley Thos Sitka
 Haley & Strum (Jas Haley & Chas
Strum) gen mdse Fort Yukon
 Halferty Z T postmaster Kodiak
 Hall J A Hyder
 Halvorsen L K gen mdse Craig
 Hamilton Doc miner Eagle
 Hamilton O J electn Sitka
 Hana Geo fox breeder Latouche
 Handley Chas M miner Porcupine
 Handy M E bakery Tenakee
 Handy & Sharik mining Haines
 Hansen E clk U S Experimental Sta-
tion Sitka
 Hanson N G postmaster hdw Haines
 Harber Wm L postmaster U S Comnr
Fort Yukon
 Harden P L pumpmn The ARR Wil-
low
 Hardmann E E Wasilla
 Harlor Donald M phys K C Corp La-
touche
 Harman W A agt The ARR Wasilla
 Harries Eug T postmaster Tofty
 Hart Frank asst cashr K C Corp La-
touche
 Hartwig Wm dep U S Marshal Hot
Springs
 Harvey Saml miner Circle
 Haslam Peter miner Wiseman
 Hately Alexander game warden Mc-
Grath
 Hawkesworth Chas W postmaster
Hydaburg
 Hawley F L miner Rampart
 Haycock John carp The ARR Curry
 Headquarters The cigars Tanana
 Healy Harry freighter Fort Yukon
 Hearn Edw miner Richardson
 Heckman H E & Co gen mdse Loring
 Hegberg Emil firemn The ARR
Curry
 Heimbach Edw R Wasilla
 Heins A B postmaster Snettisham
 Heinman Roy No Grub Creek
 Heitman Aug lab Kodiak
 Hellenthal T A Treadwell
 Henrickson Arthur hlpr K C Corp
Latouche
 Henry T J gen mdse Sitka
 Hensley Roy miner Salchaket
 Herbert John (Oberg & Herbert)
Candle
 Herbst John trapper Hot Springs
 Herm Willis rancher Haines
 Herning M A Wasilla
 Herning O G mining Knik
 Heron J L dep U S Marshal Bethel
 Herrick Robert lab The ARR Healy
 Hesn Louis miner K C Corp Latouche
 Hewitt Fearn eng K C Corp Kenne-
cott
 Hewson Moses A gen mdse Metla-
katla
 Hibbs C E (C E Hibbs & Co) post-
master Craig
 Hibbs C E & Co (C E Hibbs) gen
mdse Craig
 Higgins Geo blksmith K C Corp La-
touche
 Higgins Harry carp Haines
 Higgins Jos lab The ARR Matanuska
 Hill C G fox breeder Sanitarium
 Hill Earl G storekpr K C Corp La-
touche
 Hill E Coke lawyer Ruby
 Hill Jas E dep U S Marshal Seldovia
 Hill John miner K C Corp Kennecott
 Hill M nurse Aletna
 Hill Oren F postmaster Hyder
 Hillar Geo (Munson's Roadhouse &
Trading Post) Salchaket
 Hilliard J J dep colr in chg U S Cus-
toms Eagle
 Hillman Henry Ruby
 Hillman O G (Kane & Hillman)
Hoonah
 Hills F A U S Comnr Chichagof
 Hinchman Geo W gen mdse Haines
 Hirst Bernard gen mdse Sitka
 Hirst-Chichagof Mining Co mining
Chichagof
 Hjort Peter reprmn K C Corp La-
touche
 Hodgson T W foremn K C Mines La-
touche
 Hoffman A Frank dep U S Marshal
Matanuska
 Hoffman Fred H trapper Hot Springs
 Hoffman Geo gen mdse Bethel
 Hoffman Geo roadhouse Natamute
 Hoffman M T Mrs women's furng gds
Ruby
 Hofstad Birgitte Mrs postmaster
Doyhof
 Hogan Harry Hyder
 Hogan Ole foremn The ARR Mata-
nuska
 Hogan Thos lab K C Corp Kennecott
 Holden Paul lab The ARR Curry
 Holgate Wm farmer Haines
 Hollander Genidal lab K C Corp La-
touche
 Holland Geo lab K C Corp Latouche
 Holm Oscar tir Sitka
 Holmberg Mary C postmaster Sani-
tarium
 Holstrom John (Holstrom & Rosen-
berg) Circle
 Holstrom & Rosenberg (John Hol-
strom Frank Rosenberg) mining
Circle
 Holzer John miner Nolan
 Holy Cross Mission Holy Cross
 Hood John Nolan
 Hoonah Fox Co fox breeders Hoonah
 Hoonah Packing Co fish canners
Hoonah
 Horton Henry Port Moller
 Horton Truman A (Horton & Moore)
Fort Yukon
 Horton & Moore (Truman A Horton)
gen mdse Fort Yukon
 Hoskins Wm shoemkr Haines
 Hotch Danl Haines
 Hotch & Son gen mdse Klukwan
 Hot Springs Roadhouse (Danl Green)
Hot Springs
 Hot Springs Telegraph Co Hot Springs
 Houts Abbie Mrs sanitarium Bell
Island Hot Springs
 Howard David fishermn Sitka
 Howard Frank E U S Comnr Tanana
 Howard Geo E Rev pastor Episcopal
Ch Sitka
 Howard Jas fishermn Sitka
 Howard John pumpmn The ARR
Broad Pass
 Howell Sylvester Hot Springs
 Huddleston Frank Hot Springs

- Huey Geo W U S Comnr Wiseman
Humphries A H acct K C Corp Kennecott
Humple Harry wtr The ARR Curry
Hunter Hotel (Emil Uberti) Douglas
Hunter H Roy postmaster Fortuna Ledge
Hunter S C Haines
Huntington Jas gen mdse Hughes
Huntington Jas trader Alatna
Hurlburt Milo postmaster Seldovia
Hurley John miner Wiseman
Hydaburg Trading Co gen mdse Hydaburg
Hyder Commercial Co gen mdse Hyder
Hyder Lumber Co Hyder
Hyland M brkrmn The ARR Broad Pass
Iback & Ross fox breeder Hoonah
Iditarod Telephone Co Flat
Illicman Chas Goose Creek
Independent Lumber Co Fuby
Irish Chas miner Bettles
Irvine Harry W Douglas
Israelson Ernest miner K C Corp Latouche
Itallo T M gen mdse Yakutat
Ivenoff Stephen reindeer breeder Shaktolik
Iverson Louis miner Rampart
Jackson Effie postmaster Salchaket
Jackson Frank trapper Fort Yukon
Jackson N E lab K C Corp Kennecott
Jackson Robt farmer Hot Springs
Jacobsen E M ranger U S Forest Service Katalla
Jacobsen Peter lab K C Corp Kennecott
Jacobsen T J fishermn Sitka
Jacobsgaard Nettie S postmaster Kiviguk
Jakeman Wm lab The ARR Matanuska
Jarman Wm Mrs Douglas
Jensen Chris carp K C Corp Kennecott
Jensen Goodman miner Windham
Jensen John H Flat
Jerue Alex gen mdse Anvik
Jesse's Grocery Ruby
Jetlund Matt miner K C Corp Latouche
Jette Julius Rev pastor St Aloysius Catholic Church Tanana
Johansen Anton saw mill Seldovia
Johansen Bros gen mdse Chicken
Johnson Alvin B reprmn K C Corp Latouche
Johnson Andw trapper Fort Yukon
Johnson Axel miner Eagle
Johnson A logger The ARR Indian
Johnson Carl foremn ARC Talkeetna
Johnson C A lab The ARR Matanuska
Johnson Edw miner Circle
Johnson Edw L eng K C Corp Kennecott
Johnson Eric dep U S Marshal Council
Johnson Ernest miner Bettles
Johnson Frank miner Ruby
Johnson Fred fishermn Sitka
Johnson G A mill wkr K C Corp Kennecott
Johnson Henry reprmn K C Corp Latouche
Johnson Louis Wood River
Johnson Mary Mrs Sitka
Johnson Michl Gulkana
Johnson N E logger The ARR Indian
Johnson Otto miner K C Corp Latouche
Johnson Peter C fishermn Sitka
Johnson P O lab K C Corp Kennecott
Johnson Sandy miner Circle
Johnson & Olson fox breeders Sitka
Johnston E C storekpr U S Bureau of Fisheries St Paul Island
Johnston Jas W phys Sitka
Jones B miner Rampart
Jones Chas Ruby
Jones Harry Haines
Jones M W lab K C Corp Kennecott
Jones Robt miner Wiseman
Jones W W Ruby
Jorgensen Einar lab K C Corp Latouche
Jorovich Michl miner K C Corp Kennecott
Josephson Martin miner Bettles
Joule Tony postmaster Tigara
Jualin Alaska Mines Co mining Jualin
Junz Henry Sleetmute
Kadiak Fisheries Co gen mdse Kodiak
Kalb E J lab K C Corp Kennecott
Kaliman Geo pumpmn The ARR Curry
Kandal Wm miner Wiseman
Kane Louise H Mrs postmaster (Kane & Hillman) Hoonah
Kane L saw mill Hoonah
Kane & Hillman (L H Kane O G Hillman) Hoonah
Kansby Jos lab K C Corp Kennecott
Karadelnikoff Frank lab K C Corp Latouche
Karadich Jerry miner K C Corp Kennecott
Kashaveroff N P Rev (Russian Orthodox)
Kaska Jas logger Haines
Katich Geo S miner K C Corp Latouche
Katoff Thos miner K C Corp Latouche
Kauch Vincent lab K C Corp Kennecott
Kavanaugh H C dep U S Marshal McCarthy
Kay Geo Flat
Kay Jas Flat
Kaznakoff John miner Sitka
Keamey J E lab K C Corp Kennecott
Kechergin Gregory weather observer St Paul Island
Keith R W Hyder
Kelderhouse Chas lab Eagle
Kelleher P J miner Wiseman
Keller & Dunning lbr mfrs Seldovia
Kelley J M lab The ARR Matanuska
Kelley W H Treadwell
Kelly Dennis lab K C Corp Latouche
Kelly Frank M postmaster Eska
Kelly Ira W postmaster Chomly
Kelly Jas miner Wiseman
Kelly J F lab The ARR Windy
Kelly J F postmaster gen mdse Miller House
Kelly Mines Co Wasilla
Kemp John A (J A Kemp & Co) postmaster Steel Creek
Kemp J A & Co (John A Kemp) gen mdse Steel Creek
Kennedy E P postmaster Speel River
Kennedy Jas F Teller
Kennedy Peter (Commercial Hotel) Chitina
Kennedy Wm Tanana
Kennedy W L cook The ARR Matanuska
Kennecott Copper Corporation mining Latouche
Kepper Michl emp K C Corp Kennecott
Keppler Geo cook The ARR Matanuska
Keritis Gus lab K C Corp Kennecott
Kern Frank gen mdse Holy Cross
Kettelson Theo supt Alaska Pioneers Home Sitka
Khalio A carp AGMCo Thane
Kilburn L W agt Alaska Steamship Co Douglas
Kilgore A M Flat
Kincaid Sami T miner Ruby
King C R Rev Kodiak
King Ernest (King & King) Bettles

**Alaska Territorial List of Names—
Continued**

King Jas Haines
 King Jas jr fishermn Haines
 King Jos Haines
 King Matthew lab The ARR Matakuska
 King Nick Douglas
 King Roy (King & King) Bettles
 King Thos gen mdse Charlie Creek
 King & Katz fox breeders Craig
 King & King (Ernest and Roy King) fox breeders Bettles
 Kinof Jas lab K C Corp Latouche
 Kingston John Fort Yukon
 Kinne A B postmaster Council
 Kirberger Ernest postmaster and gen mdse Kake
 Kircheiner Chas Sitka
 Kirkham Jas O carp Douglas
 Klaich Vuko repr K C Corp Latouche
 Klawock Commercial Co gen mdse Klawock
 Kleffen John miner Wiseman
 Klerck Alfred steward K C Corp Latouche
 Klimesch & Watson gen mdse Anvik
 Klontech Chas game warden Sitka
 Klukwan Mercantile Co gen mdse Klukwan
 Knezedich Michl lab K C Corp Kennecott
 Knight H G mgr Glacier Creek Gold Mining Co Haines
 Knoell W V insp The ARR Curry
 Knudsen Saml expmn Sitka
 Knudtson T G lab The ARR Matakuska
 Koch Danl mech K C Corp Kennecott
 Kodiak Hotel (Paul Morrison) Kodiak
 Koen Chas J U S Comnr St Michael
 Kohmer Herman (Froelich & Kohmer) Eagle
 Komedal Alfred gen mdse Unga
 Kostrometinoff Peter gen mdse Sitka
 Kostrometinoff Peter jr Sitka
 Kotzau John miner Beaver
 Kotzebue Fur Trading Co gen mdse Kotzebue
 Kovich Thos miner Wiseman
 Kozachuk David lab K C Corp Latouche
 Kraft Benj (Otto Kraft & Son) Kodiak
 Kraft Emil Kodiak
 Kraft Otto (Otto Kraft & Son) Kodiak
 Kraft Otto & Son (Otto and Benj) gen mdse Kodiak
 Kraft Pauline Kodiak
 Kreger Henry eng Aletna
 Kreiger Herman miner Beaver
 Krober Jos L phys Eska
 Krogh Oliver O postmaster Matakuska
 Kronquist Axel fire chf Douglas
 Kuettner A H postmaster Killisnoo
 Kufer Henry barber Douglas
 Kulper Baker & Moldenhauer fox breeders Latouche
 Kuskokwim Dredging Co mining McGrath
 Kuskokwim Mining & Dredging Co Kuskokwim
 Kuskokwim Times newspaper Tokona
 La Belle Fred Ruby
 Lahey T D Haines
 Lahr Jas M bkpr Latouche
 Laitila J Mrs Douglas
 Lamson F A Chitina
 Landsberg Hans lab The ARR Matakuska
 Lane Andw H miner Eureka
 Lane Travis P asst eng K C Corp Latouche
 Landsberg Robt miner K C Corp Kennecott
 Lanke Peter gen mdse Dome
 Lanterman Hilman fox breeder Chatham
 La Porte Thos miner Rampart
 Larchelt Robt L Wrangell
 Larimore Louis miner Bettles
 Larson Fred B firemn K C Corp Kennecott
 Lashley Barney Salchaket
 Lathrop Jas M U S Comnr Kodiak
 Laurie Bros (John and Saml) clothing McCarthy
 Laurie John (Laurie Bros) McCarthy
 Laurie Saml (Laurie Bros) McCarthy
 Laverty Arthur A Chitina
 Laviosa Arthur B fox breeder Latouche
 Laviosa & Nielsen fox breeders Ellamar
 Lawlor John lab The ARR Matakuska
 Lawson Capp miner Wiseman
 Lawson Frank Mrs Wiseman
 Lawson Gus trapper Beaver
 Layer E deaconess Aletna
 Leach Frank (Circle Hot Springs) Circle
 Learn Geo A Rev pastor Baptist Ch Kodiak
 Leckie C D U S Comnr Nenana
 LeCoup A M watchmn The ARR Chicaloon
 Lee Edw Y restr Tanana
 Lee O E (Powers & Lee) Circle
 Legg Louis Hyder
 Leibes H & Co gen mdse Barrow
 Lenvick H R wtr The ARR Curry
 Lersten J S bakery Sitka
 Levy W S gen mdse Kiana
 Lewis David M gen mdse Ruby
 Libby McNeill & Libby fish cannery Kenai
 Lidstrom J wtr The ARR Curry
 Lindberg H asst U S Experimental Station Sitka
 Lindenberger Packing Co fish cannery Craig
 Lindsay Geo Tanana
 Lindsay J P postmaster Klawock
 Lingo Archie watchmn The ARR Chicaloon
 Link Adam lab The ARR Indian
 Linklater Archie trapper Fort Yukon
 Linton Ethel postmaster Baranof
 Linwall Ludvig K miner K C Corp Kennecott
 Littlepage J D Hyder
 Livie John Treadwell
 Lloyd C W clk K C Corp Kennecott
 Lloyd Ernest Rampart
 Loeser M Mrs miner Rampart
 Lommel Walter assayer K C Corp Kennecott
 Long Arthur cond The ARR Curry
 Loof A T warden U S Bureau of Fisheries Nushagak
 Lord Victor Hot Springs
 Lorensen Fred fox breeder Afognak
 Lottsfeldt Carl disbursing clk Alaska Road Com Chitina
 Lou Ingevald fox breeder Afognak
 Love J C postmaster Dillingham
 L O O M Tanana Lodge No 1426 Al Nobbs sec Tanana
 Lucas Ford R supt U S Bureau of Fisheries Afognak
 Lukens W W asst supt Alaska Road Comn Takotna
 Lund Olof miner Eureka
 Lyden Anthony A postmaster Healy Fork
 Lynch Oscar foremn ARC Wasilla
 Lyons Frank postmaster Nulato
 Lysell Geo carrier P O Eagle
 McAlpine W W Homer
 McCahey Patk Ruby

- McCaig Walter T miner K C Corp
 Latouche
 McCann John lab K C Corp Kennecott
 McCarthy Mercantile Co J B O'Neill
 mgr McCarthy
 McCarthy Paul W agt The ARR Tal-
 keetna
 McCartney Si miner Circle
 McCauly Wm miner Beaver
 McClane Donald mach Ruby
 McCormick E miner Beaver
 McCoy L B fox breeder Sitka
 McCracken Andrew watchmn The
 ARR Chicaloon
 McCraky John Copper Center
 McCrary & Ibach Trading Co gen
 mdse Copper Center
 McCutcheon H E cond The ARR Bird
 McDaniel R B hlpr K C Corp Kenne-
 cott
 McDonald D dep U S Marshal For-
 tuna Ledge
 McDonald John lab The ARR Bird
 McDonald John Hyder
 McDonald J A postmaster gen mdse
 Berry
 McDonald T W dep U S Marshal
 Hyder
 McGavock Jas mech K C Corp Kenne-
 cott
 McGee Bert freighter Ruby
 McGinley Howard G tchr Kodiak
 McGinley Laura Mrs tchr Kodiak
 McGlashan Hugh gen mdse post-
 master Akutan
 McGrath Chas M gen mdse Sitka
 McGrath Wm foremn The ARR Mata-
 nuska
 McGraw Jas rancher Haines
 McInnis Danl cond The ARR Curry
 McIntosh Geo mech K C Corp La-
 touche
 McIntyre Robt miner Wiseman
 McKechnie Neil lab The ARR Mata-
 nuska
 McKinnon Abe asst supt Alaska Road
 Com Chatanika
 McLain Thos P dep U S Marshal
 Circle
 McLaughlin Wm miner Circle
 McLaughlin W D mining Richardson
 McLean Alben F Haines
 McLean Arthur master mariner U S
 Bureau of Fisheries Sitka
 McMahon John lab The ARR Mata-
 nuska
 McMullen Peter dep U S Marshal
 McGrath
 McNulty Jos postmaster Sitka
 McPhail Angus lab The ARR Curry
 McPherson J A fox breeder Ellamar
 McRoberts Richd Sitka
 McWilliam-Bourke John miner Eagle
 Mabry Harry Sitka
 MacCreary C P reprmn K C Corp La-
 touche
 MacDonald Duncan dep U S Marshal
 Candle
 Mackivitz Oscar R Cleary
 Madsen Chas postmaster Kanatak
 Magids Boris postmaster Deering
 Magids Saml gen mdse Kotzebue
 Magnusen Chris master mariner Ko-
 diak
 Magnuson Swan P Dome
 Mahan Thos (Mahan & Gillis) Liven-
 good
 Mahan & Gillis (Thos Mahan M
 Gillis) gen mdse Livengood
 Mahle Otto miner Kodiak
 Maki John C miner K C Corp Kenne-
 cott
 Makino Saml baker K C Corp Kenne-
 cott
 Malcolm Hiram Strelma
 Malleahy Thos miner Beaver
 Malm Anna Mrs Eagle
 Malm Marie Eagle
 Malmi Herman lab The ARR Mata-
 nuska
 Manning Jake Douglas
 Markikis Chris miner K C Corp La-
 touche
 Marsan Edw miner Bettles
 Marsden Edw U S Comnr Metlakatla
 Marsh Geo F U S Comnr Fortuna
 Ledge
 Marshall Robt meats McCarthy
 Martin Andw farmer Douglas
 Martin Ernest miner Wiseman
 Martin Henry Treadwell
 Martin Henry E miner Fort Yukon
 Martin John fishermn Sitka
 Martindale J C dep colr in chg U S
 Customs Craig
 Martinson Martin lab The ARR Mata-
 nuska
 Marzan Arthur mail carrier
 Mason Reuben trapper Fort Yukon
 Mason Willoughby trapper Fort Yu-
 kon
 Mather Archie trapper Eagle
 Mather Ervin trapper Eagle
 Matheson Wm fishermn Ft Yukon
 Mathison R L postmaster Hope
 Matlock Geo mining Eagle
 Matthews Jos miner Bettles
 Mauer Peter Hot Springs
 May John Goose Creek
 Mayerhofer Jacob logger The ARR
 Indian
 Mayo Alfred H miner Rampart
 Mayo Benj trapper Rampart
 Mayo Chas miner Rampart
 Mehas Theros lab The ARR Mata-
 nuska
 Meier C J gen mdse Gulkana
 Mellick A H master mariner U S
 Bureau of Fisheries Unalaska
 Mellin John postmaster Klana
 Mello Manuel miner Beaver
 Mercier Ralph lab K C Corp Latouche
 Merrill M E eng K C Corp Kennecott
 Merrill E W photog Sitka
 Metlakatla Commercial Co gen mdse
 Metlakatla
 Metschler E A eng K C Corp Kenne-
 cott
 Mettenberg Jos miner Bettles
 Metzger John (John Metzger & Co)
 postmaster Fox
 Metzger John & Co (John Metzger)
 gen mdse Fox
 Meyer Otto Circle
 Meyers Cyril L opr K C Corp Kenne-
 cott
 Mitchell Gordon C supt of schools
 Douglas
 Miller Antone trapper Rampart
 Miller A A miner Wiseman
 Miller Burgon foremn The ARR Curry
 Miller Frank fuel Eagle
 Miller Geo L miner Tanana
 Miller H R agt The ARR Birchwood
 Miller John postmaster Dempsey
 Miller Robt lab K C Corp Kennecott
 Miller Saml miner Eagle
 Miller Stanley miner K C Corp La-
 touche
 Milligan Fred Ruby
 Millmore House (Sam Sing) furn rms
 Sitka
 Mills C Jay fishermn Sitka
 Mills L Mae Sitka
 Mills Waldo C Sitka
 Mills Wm P pres Wm P Mills & Co
 Iac Sitka
 Mills Wm P Co Inc W P Mills pres
 gen mdse Sitka
 Missapowitz Henry Wiseman
 Mitchell G W miner Rampart
 Mitich John lab K C Corp Latouche
 Mittendorff Aug H postmaster Nusha-
 gak
 Mogen Geo L lab K C Corp Kennecott

**Alaska Territorial List of Names—
Continued**

Mohr Esther J Mrs sten K C Corp Kennecott
 Mooney Albt E lab K C Corp Kennecott
 Mooney R clk K C Corp Kennecott
 Moore E C agt The ARR Clear
 Moquawkie Commercial Co gen mdse Moquawkie
 Morian Patk lab The ARR Matanuska
 Morey A G postmaster Chitina
 Morgan Geo gen mdse Oghagemute
 Morgando Steve lab K C Corp Kennecott
 Morris Annie emp K C Corp Latouche
 Morris Caldwell lab K C Corp Kennecott
 Morris J D emp K C Corp Kennecott
 Morris Paul jr lab K C Corp Latouche
 Morris Richd trapper Beaver
 Morris Thos lab K C Corp Kennecott
 Morris Wilbur emp K C Corp Kennecott
 Morrison John G hotel Haines
 Morrison John G jr Haines
 Morrison Paul (Kodiak Hotel) Kodiak
 Morrison Robt carp Kodiak
 Morrison Robt roadhouse Hope
 Morrison Wm lab K C Corp Kennecott
 Mortimer Geo miner Circle
 Mosier Albt G postmaster Gypsum
 Muller A gen mdse Kake
 Muller Peter Kodiak
 Murphy D A U S Comr Beaver
 Murphy Frank lab The ARR Curry
 Murphy Frank miner Salchaket
 Murphy W P Hot Springs
 Murphy W P phys U S Bureau of Fisheries St George Island
 Murray Michl Hot Springs
 Murray Robt miner Eagle
 Mutchler Geo Flat
 Myers A D S postmaster Ellamar
 Myers Chas wharfinger Kodiak
 Myers Geo T postmaster Chatham
 Myers Geo lab The ARR Matanuska
 Myers G W sanitarium Circle
 Mygatt Henry asst agt U S Bureau of Fisheries St Paul Island
 Nafsted J M Tonsina
 Nagel Carl trapper Hot Springs
 Nagle F R Hyder
 Nagley Horace W U S comnr postmaster and gen mdse Susitna
 Nagozruk A postmaster Wales
 Naughton Chas C U S comnr Katalla
 Naumann Wm postmaster Taku Harbor
 Nelson Alfred miner Rampart
 Nelson A F U S comnr Chisana
 Nelson Bert lab K C Corp Latouche
 Nelson Danl gen mdse Kasaan
 Nelson Edith J postmaster Kasaan
 Nelson Emerick lab The ARR Matanuska
 Nelson Fred Wasilla
 Nelson Gus Eagle
 Nelson Ingeval lab K C Corp Kennecott
 Nelson John S M mgr Chitina Cash Store Chitina
 Nelson Louis lab The ARR Matanuska
 Nelson N (Beaton & Nelson) Circle
 Nelson O A U S comnr Chitina
 Nelson Peter trapper Fort Yukon
 Nelson & Smith gen mdse Koyukuk
 Nevada Andw lab K C Corp Kennecott
 Nevans John paints Ruby
 Newell Richd lab The ARR Matanuska
 Newton Arthur L miner Beaver
 Nicholls Fred Chitina
 Nichols Elworth trapper Beaver
 Nichols Herman miner Hot Springs
 Nichols Jas A postmaster Barrow
 Nichols Wm miner Eureka
 Nicholson Danl freighter Circle
 Nicholson O J miner Beaver
 Nicklett Nick McGrath
 Nicley W J foremn The ARR Matanuska
 Nieding B B mgr K C Corp Kennecott
 Nielsen Wm U S comnr Koggiung
 Nielson Anna Ruby
 Nielson John B lab K C Corp Latouche
 Niemi Andw trapper Hot Springs
 Ninnis Melville electn The ARR Curry
 Nixon Fork Sawmill McGrath
 Nizina Mines Co Nizina
 Nohle Norman Kodiak
 Nolan Thos B eng K C Corp Kennecott
 Nollner O R gen mdse Loudon
 Nordlind Andw Candle
 Nordstrom Al mech K C Corp Latouche
 Norman Albt lab K C Corp Latouche
 Norton John Kodiak
 North Pacific Trading & Packing Co fish canners Klawock
 Northern Commercial Co Chas Jones mgr gen mdse Ruby
 Northwestern Fisheries Co fish canners Kenai
 Notilla Toiva Flat
 Noyes Island Packing Co fish cannery Craig
 Nyman A F mach Kodiak
 Oakes Glen wharfinger Treadwell
 Oars Austin lab The ARR Matanuska
 Oberg Chas (Oberg & Herbert)
 Oberg N W logger The ARR Indian
 Oberg & Herbert (Chas Oberg John Herbert) gen mdse Candle
 Osborne Eli lab The ARR Matanuska
 O'Brien Dennis Fort Yukon
 O'Brien Wm trapper Fort Yukon
 Obruchki Michl miner K C Corp Latouche
 O'Callaghan John P caretkr Fort Egbert Post Eagle
 O'Connor Michl J warden U S Bureau Fisheries Haines
 Odell Risden M gen mdse Haines
 O'Donnell Michl lab K C Corp Kennecott
 Okrayt & Son Kodiak
 Olin Fred Ruby
 Oliver D lab K C Corp Kennecott
 Olsen Bessie Mrs Indy Circle
 Olsen C E cond The ARR Curry
 Olsen Hagen miner Rampart
 Olsen Henry McCarthy
 Olsen Martin sawmill Baranof
 Olsen O S Hot Springs
 Olsen Victor foremn K C Corp Kennecott
 Olson Aug Douglas
 Olson Benj (Olson & Everman) Eureka
 Olson Edw trapper Eagle
 Olson John miner Eagle
 Olson Nels lab The ARR Matanuska
 Olson Victor trapper Beaver
 Olson & Everman (B Olson E Everman) mining Eureka
 Omo F E lab Eagle
 O'Neil C M electn K C Corp Latouche
 O'Neil Steve miner Susitna
 O'Neill J B mgr McCarthy Mercantile Co McCarthy
 Ongstad Peter H postmaster Portlock
 Orchard John tchr U S Bureau of Fisheries St George Island
 Osborne C E acct K C Corp Kennecott
 Oshima Geo trapper Beaver
 Oslund Erik expmn Haines
 Ott A miner Rampart
 Ott Chas (Ott & Scheele) Eagle
 Ott & Scheele (Chas Ott J W Scheele) gen mdse Eagle
 Otterson Oscar miner Beaver
 Ottosen John fox breeders Sitka

- Overgaard I lab K C Corp Kennecott
 Owens Edw Fort Yukon
 Owens Edw miner Salchaket
 Owl Restaurant Douglas
 Pacific American Fisheries Co fish
 cannery King Cove
 Pacific Steamship Co G L Smith agt
 Douglas
 Pacific Steam Whaling Co fish can-
 nery Hunter Bay
 Padden P T U S comnr Dillingham
 Padgett J H electn K C Corp Kenne-
 cott
 Page T D carp Haines
 Pajoman Chas W gen mdse Afognak
 Palackas Loukas lab K C Corp Ken-
 necott
 Palm John mail carrier Circle
 Parker N E lab K C Corp Latouche
 Parks E W gen mdse Park
 Partridge F H Hoonah
 Pasno Mabel Mrs Bettles
 Patten & Abbes fox breeders Fan-
 shaw
 Patterson E gen mdse Shungnak
 Patterson N F lab The ARR Mata-
 nuska
 Patton Frank prospector Beaver
 Paul Gabe Treadwell
 Paulson John Gulkana
 Paykull K R farmer Haines
 Paykull Wm farmer Haines
 Peck Chas R gen mdse Flat
 Pedersen Sander postmaster Shakan
 Pedro Mary E wtrs The ARR Curry
 Pentalieff A Rev pastor Russian Or-
 thodox Ch Sitka
 Peratovitch Robt J gen mdse Klawack
 Perkins Wm S postmaster Yentna
 Perry Alfred Ruby
 Pestrikoff Elka carp Kodiak
 Pestrikoff Harlempi carp Kodiak
 Petellin Emelian P postmaster gen
 mdse Afognak
 Petellin Zoa E tchr Afognak
 Petersen Chris postmaster Tokotna
 Peterson Anton blksmith K C Corp
 Kennecott
 Peterson Cari miner Wiseman
 Peterson Chas fox breeder Afognak
 Peterson C J gen mdse Gilmore
 Peterson Geo H dep supvr U S Forest
 Service Sitka
 Peterson H C asst U S Bureau of
 Fisheries St Paul Island
 Peterson John A fox breeder Craig
 Peterson John H gen mdse Sitka
 Peterson L T fox breeder Sitka
 Peterson Martin Tanana
 Peterson Neils Fort Yukon
 Petry Chas warden U S Bureau of
 Fisheries Chignik
 Pfaffle Edw H (Pfaffle & Co) Council
 Pfaffle & Co (Edw H Pfaffle) gen
 mdse Council
 Phillips C B watchmn The ARR Chic-
 aloon
 Phillips Florence K cook The ARR
 Matanuska
 Phillips Fred U S comnr Iliamna
 Phillips Jos Hot Springs
 Phillips Morton P lab The ARR Mata-
 nuska
 Pierson John fuel Eagle
 Pillar Bay Fox Co fox breeders Pillar
 Bay
 Pincidas Saml lab K C Corp Latouche
 Pingle Henry Nolan
 Pinkham J E lab The ARR Mata-
 nuska
 Pinta Bay Mining Co sawmill min-
 ing Chichagof
 Pioneers of Alaska Igloo No 5 D W
 Lewis pres W W Jones sec Ruby
 Pioneers of Alaska Igloo No 13 C L
 Vawter pres J C Dahn sec Tanana
 Pitka Harry Ruby
 Pitsenberger J N fox breeder Hyda-
 burg
 Pitsenberger T D fox breeder Hyda-
 burg
 Plem Louis lab K C Corp Latouche
 Plumley S A S comnr Craig
 Polley Wm E meats Haines
 Pompal Jos M miner Circle
 Popovich John miner Wiseman
 Porcupine Gold Mining Co Haines
 Porter Edwin lab The ARR Mata-
 nuska
 Porter Howard H gen mdse Iditarod
 Porter Wallace postmaster Haycock
 Powers Geo (Powers & Lee) Circle
 Powers John B dep U S marshal
 Eagle
 Powers & Lee (Geo Powers O E Lee)
 mining Circle
 Pratt H M (Pratt & Ferrin) Hope
 Pratt & Ferrin (H M Pratt Al Ferrin)
 gen mdse Hope
 Premier Gold Mining Co Ltd Hyder
 Presbyterian Church Rev Geo J Beck
 pastor Hoonah
 Presbyterian Church Ruby
 Presbyterian Mission Church (for na-
 tives) Haines
 Presley BeVan supt K C Corp La-
 touche
 Price F gen foremn Alaska Road Com
 Eagle
 Pride Geo miner Rampart
 Prim A J lab K C Corp Kennecott
 Proctor A H supt Pribilof Islands U
 S Bureau Fisheries St Paul Island
 Proctor Lois L tchr U S Bureau of
 Fisheries St Paul Island
 Pryde Harry A dep U S marshal
 Hoonah
 Pugh Claude F agt CR&NWRY Mc-
 Carthy
 Pukosh Wm miner K C Corp Kenne-
 cott
 Queen O K gen mdse Unalaska
 Quinn Edw miner Susitna
 Quinn E B wtr The ARR Curry
 Radovich Peter miner Wiseman
 Radovich WeiJa trapper Hot Springs
 Rafferty John Wiseman
 Rahmstorf Julius postmaster gen
 mdse Rampart
 Rampa Louis lab K C Corp Kennecott
 Ramsey Jas Douglas
 Randall Geo hotel Eagle
 Randle Almond Eagle
 Ranson Gus cook The ARR Broad
 Pass
 Rapich Eli miner K C Corp Kennecott
 Rarovich Andw M bakery Valdez
 Ray Chas W lab The ARR Matanuska
 Read R L miner K C Corp Kennecott
 Red Cross Drug Co (A J Dayton)
 Ruby
 Redwood Frank pumpmn The ARR
 Cantwell
 Reed W N dep U S marshal Dilling-
 ham
 Reeth W H miner Akiak
 Reid John carp K C Corp Latouche
 Renisch Chas tinsmith Circle
 Renner Clyde Bird Creek
 Reno Jos gen mdse Girwood
 Richards Richd miner K C Corp La-
 touche
 Richards John W eng K C Corp La-
 touche
 Richardson C D gen mdse Poorman
 Richardson Edw miner Windham
 Richert Geo lab K C Corp Kennecott
 Ringseth Paul gen mdse Livengood
 Ringstad O H lab K C Corp Kenne-
 cott
 Rinocky Frank trapper Beaver
 Ripinsky Sol gen mdse U S comnr
 Haines
 Ritchie Marie E nurse K C Corp La-
 touche

**Alaska Territorial List of Names—
Continued**

- Rivers Florence M postmaster Flat
Road H Mrs soft drinks Wiseman
Roberts John postmaster Franklin
Roberts Jos F trapper Beaver
Roberts R G gen mdse Candle
Roberts T W miner K C Corp Kennecott
Roberts Wm miner Rampart
Roberts & Co gen mdse Klawock
Robertson E A mining Eagle
Robertson Wm expmn Douglas
Robinson Hilkey mgr Robinson & Greenberg postmaster Candle
Robinson S E Mrs Eagle
Robinson & Greenberg H Robinson mgr gen mdse Candle
Robson Henry H Tanana
Roe Edw Bell Island Hot Springs
Roe Geo Est of gen mdse Bell Island Hot Springs
Roe Wm Bell Island Hot Springs
Roehl & Neilson gen mdse Ikatan
Roell R W electn K C Corp Kennecott
Rogers R L fox breeders Latouche
Rogers Thos M prospector Afognak
Roi Geo gen mdse Sunrise
Roll Ferdinand gen mdse Sitka
Roll Geo gen mdse Hope
Rooney John Wiseman
Roosevelt Teddy miner Beaver
Rose Antone S trapper Fort Yukon
Rosenberg Frank (Holstrom & Rosenberg) Circle
Rosenblatt Leah tchr Eagle
Ross Danl dep U S marshal Unalaska
Ross Harry mining Eagle
Ross W E gen mdse Howkan
Ross W E Mrs fox breeder Sitka
Rossbach Frank Woodchopper Creek
Rossi C miner K C Corp Latouche
Roth John farmer Haines
Rothacher Bessie R postmaster Iditarod
Rothe Ralph emp K S Corp Kennecott
Rowe Alden postmaster Hot Springs
Roy Horace bakery Sitka
Rozenstein Yael gen mdse Hyder
Ruby Lumber Co Ruby
Rush U S U S comnr Kasaan
Russell Jas lab The ARR Matanuska
Russell O P gen mdse Stephens Village
Russell Wm mining Eagle
Russian Orthodox Church Rev N P Kashaveroff pastor Kodiak
Ruthschow Wm gen mdse Cold Bay
Rutzebeck Hans farmer Haines
St Aloysius Church Rev Julius Jette S J pastor Tanana
St Clair Jas Wasilla
St James Mission (Episcopal) Tanana
St Luke's Indian Mission Fredrick Drain in chg Salchaket
St Stephen's Episcopal Church Fort Yukon
St Stephen's Hospital (St Stephen's Episcopal Church) Fort Yukon
Sabin Martin farmer Hot Springs
Sadler Chas lab AGMCo Thane
Sadler J W Thane
Salmon River Trading Co gen mdse Hyder
Samovich Steve lab K C Corp Kennecott
Sampson Alfred lab K C Corp Kennecott
Sampson Benj lab K C Corp Kennecott
Samuelson Oscar C Bethel
Sanborn Cutting Co fish canners Kake
Sandman John fishermn Sitka
Sanford Chas F U S comnr Hyder
Sara Peter reindeer breeder Akiak
Sargent Fred Kodiak
Sarvela John Sitka
Savage John miner Eureka
Scanland Louis W radio opr Fort Yukon
Schaefer Gus (Schaefer & Brown) Bethel
Schaefer & Brown (Gus Schaefer Jas Brown) gen mdse Bethel
Scheele John W (Ott & Scheele) Eagle
Scheneck Jas postmaster Hollis
Schmaltz Gerasim Rev pastor Greek Orthodox Ch Afognak
Schneider Bert L asst in chg U S Experimental Sta Matanuska
Schneider O L Matanuska
Schotter Frank Hoonah
Schroeder Fred Fort Yukon
Schultz Chas W postmaster Beaver
Schultz Paul gen mdse Beaver
Schulz Herman miner K C Corp Latouche
Schwenn Fred lab K C Corp Kennecott
Scott A R miner Windham
Scott Robt fox breeder Craig
Scott W E jr lab K C Corp Kennecott
Scudder Henry C storekpr U S Bureau of Fisheries St George Island
Seaholm Alex Hot Springs
Sealey Chas (Sealey & Gelineau) Latouche
Sealey & Gelineau (Chas Sealey J R Gelineau) gen mdse Latouche
Seguin Wm Fox
Sellander C J lab The ARR Curry
Senor Andw trapper Stephens Village
Seppi Frank Hyder
Seteroporolis Vasilios lab K C Corp Kennecott
Sevewright Rex farmer Hot Springs
Seward Thos opr K C Corp Latouche
Sey Martha Douglas
Seyler Louis Flat
Shade Oris clk Tanana
Shanks John Hot Springs
Sharatine Tschon Afognak
Sharkey Tony lab K C Corp Latouche
Shaughnessy Thos postmaster gen mdse Solomon
Shaver Fay R tchr Haines
Sheldon Jackson Museum Sitka
Sheldon Jackson School (native) Sitka
Sheldon Stephen (Haines Hotel) Haines
Shelp Archie fox breeder Tokoen
Shepard R J farmer Haines
Sheppard N D postmaster Andreafsky
Sheratine Nicholas carp Afognak
Sheridan Fredk C barber Sitka
Sherman E H dep U S marshal Tenakee
Shipp Frank supt Alaska Road Com Chitina
Sholin Edwin E fox breeder Chichagof
Sholl B J lab K C Corp Latouche
Short Lynn roadhouse Fort Yukon
Shortley M E bakery Seldovia
Shotter Geo R fox breeder Hoonah
Shrey Fred meatctr Sitka
Shudshift Arnie Douglas
Shumaker F A fox breeder Latouche
Shuraveloff Simeon carp Kodiak
Shuraveloff Walter Kodiak
Simel Max gen mdse Cripple
Simmons C A postmaster gen mdse Chisana
Simon Henry tmstr Eagle
Simonds H L fox breeder Katalla
Simonds & Shotter fox breeders Hoonah
Simpson Benj confr Metlakatla
Simpson Peter boatbldr Sitka
Sing Lee gen mdse Chichagof
Sing Sam (Millmore House) Sitka
Singer H G postmaster and guide Kenai

- Singleton John A postmaster St Tim-
othys
 Siranson Oscar Candle
 Sirt Benj miner Bettles
 Sitka Hospital Sitka
 Sitka Public School Sitka
 Sitka Water & Light Co Sitka
 Sitka Wharf & Power Co Sitka
 Sizeland Jas lab The ARR Matanuska
 Skof Agnes postmaster Cleary
 Slade Carl steward K C Corp La-
touche
 Slate Creek Mining Co Chitina
 Slaven Frank Woodchopper
 Slavin Frank mgr Slavin & Co Circle
 Slavin & Co Frank Slavin mgr gen
mdse Circle
 Slayter Saml chef The ARR Curry
 Slisco John miner Wiseman
 Slisco Martin miner Wiseman
 Slovarp John cook The ARR Curry
 Smart John trapper Salchaket
 Smart S J lab The ARR Matanuska
 Smeaton John gen mdse Sleetmute
 Smith A C Haines
 Smith Chas Eagle
 Smith Chas R fox breeder Hydaburg
 Smith E E Douglas
 Smith Frank M gen mdse Bettles
 Smith Fred miner Beaver
 Smith Geo Akiak
 Smith Guy L (Guy's Drug Store)
postmaster Douglas
 Smith Jas A drugs Sitka
 Smith John gro Hoonah
 Smith John lab K C Corp Kennecott
 Smith Jos A farmer Haines
 Smith J E prospector Haines
 Smith Lynn dep U S Marshal Flat
 Smith Martin lab K C Corp Latouche
 Smith Mary S nurse K C Corp La-
touche
 Smith Michl Fort Yukon
 Smith Sumner S postmaster Chicka-
loon
 Smith W R Haines
 Snider Gerrit Wasilla
 Snook W C dep U S Marshal Unga
 Snow Frank Haines
 Snyder Edw (Tenakee Hot Springs)
postmaster gen mdse Tenakee
 Snyder Roy F McCarthy
 Soboleff Vincent gen mdse Kootzen-
hood
 Solvic Olaf trapper Beaver
 Sorrels Jas F Haines
 Soucier Frank contr Haines
 Spain Wm R Douglas
 Spargles Geo jr eng Kanatak
 Spein Peter reindeer breeder Akiak
 Spencer J postmaster and gen mdse
Berry Landing
 Spies Michl lab The ARR Matanuska
 Spinks Isaac gen mdse Bettles
 Spraner Adel M Indrymn The ARR
Curry
 Springer Margaret wtrs The ARR
Curry
 Stabler Howard D lawyer Sitka
 Stade Henry A (Central Roadhouse)
Circle
 Staklo R H lab K C Corp Kennecott
 Stanfield Helgar Haines
 Stanich O'Brian miner Wiseman
 Stanich Saml miner Wiseman
 Stankus Julius pilot Circle
 Stanley Geo L U S Comnr Kiana
 Stanley Louis V miner Circle
 Stanyar Edw foremn AGMCo Thane
 Stark P cook The ARR Curry
 Startsoff A farmer Sitka
 Stecker G A postmaster Quinhagak
 Stedman C F fox breeder Kake
 Steel Robt E postmaster U S Comnr
Eagle
 Steele Nels cook The ARR Curry
 Steffanson Thos roadhouse Eureka
 Steiner C O U S Comnr Council
 Stephen Walter M eng K C Corp Ken-
necott
 Sterick A electn AGMCo Thane
 Stevens Frank miner Eureka
 Stevenson Donald H fur warden Bu
of Biological Surv Unalaska
 Stevenson Jas roadhouse Bettles
 Stewart Claude Chitina
 Stewart Jas (Stewart & Denhart)
Richardson
 Stewart & Denhart (Jas Stewart Paul
Denhart) mining Richardson
 Stewart & McDonald fox breeders El-
lamar
 Stier E J U S Comnr Flat
 Stivers E R dep colr in chg U S Cus-
toms St Michael
 Stokes Alfred mech K C Corp La-
touche
 Stone Floyd agt The ARR Windy
 Strauss Louis postmaster Unalaska
 Strellic J gen mdse Richardson
 Stribu Geo lab K C Corp Kennecott
 Stride Sidney farmer Haines
 Strite Ruth Mrs gen mdse Long
 Strong Peter lab The ARR Indian
 Strum Chas (Haley & Strum) Fort
Yukon
 Stubbs Duke E fox breeder Nancy
 Sturrock Thos P prospector Beaver
 Subartee Manuel Flat
 Sullivan Michl J miner Eureka
 Sulzer Chas A gen mdse Sulzer
 Summerville Peter trapper Eagle
 Sundmacher Chas H U S comnr Mc-
Carthy
 Sunny Point Packing Co fish canners
Chomly
 Sutphen Edw miner Wiseman
 Sutter Edna nurse K C Corp Kenne-
cott
 Swanson Chas miner Rampart
 Swanson Ernest O fox breeder Port
Alexander
 Swanson E E Rampart
 Swanson Fred gen mdse Unalakleet
 Swanson T E emp K C Corp Kenne-
cott
 Swartzenberger W Mrs Douglas
 Swarva Geo Douglas
 Sweasey Enos prospector Beaver
 Swift Fred miner Wiseman
 Taggart Chas C postmaster Deadwood
 Talroff Saml lab K C Corp Kennecott
 Tanana Commercial Co (Peter and A
G Vachon) Tanana
 Tanner Harry Hyder
 Tanninos Chris miner K C Corp La-
touche
 Tate Agnes Mrs gen mdse Cleary
 Tattran Herbt reindeer breeder Shak-
tolik
 Taylor C E postmaster Uyak
 Tenakee Hot Springs (Edw Snyder)
Tenakee
 Thayer John A forest ranger Craig
 Theehy Marcel miner Wiseman
 Thlinket Packing Co fish canners
Funter
 Thomas Jos E lab K C Corp Kenne-
cott
 Thomas R C blksmith K C Corp Ken-
necott
 Thomas S G dep U S Marshal Sitka
 Thomas Wm emp K C Corp Kenne-
cott
 Thomas Wm H U S Comnr Tigara
 Thompson Clyde A (Eagle Trading
Co) Eagle
 Thompson John L gen mdse Hadley
 Thompson J C lab The ARR Mata-
nuska
 Thompson Martin bakery Sitka
 Thompson Wm S postmaster and gen
mdse Kokrines
 Tierney G M foremn The ARR Eska
 Tilson Alfred fishermn Sitka
 Tilson Thos fishermn Sitka

**Alaska Territorial List of Names—
Continued**

Tilson Thos jr Sitka
 Tirpin Thos blksmith K C Corp Latouche
 Tives Gene lab The ARR Matanuska
 Tjosevig Nils McCarthy
 Tobin Wm Hyder
 Tolonen, A W eng K C Corp Kennecott
 Tolovana Mill & Tram Co sawmill Livengood
 Tolovana Trading Co gen mdse Tolovana
 Tomlinson F W gen mdse Franklin
 Torras Saml emp K C Corp Kennecott
 Torvin Getrox miner K C Corp Latouche
 Tower House (Jos Anicich) hotel Tanana
 Townsend F R (Carson & Townsend) Hoonah
 Traeger Chas A gen mdse postmaster Unalakleet
 Traub C G postmaster Chicken
 Treadwell Bakery (John Enge) Treadwell
 Trefzger Hardy fox breeder Yakutat
 Tregoning K A fox breeder Latouche
 Treischeldt John carp Sitka
 Treischeldt Nicholas eng Sitka
 Treischeldt Peter Sitka
 Troser Homer D lab The ARR Broad Pass
 Truax Elva housekpr The ARR Curry
 Turnbull A H miner Eagle
 Turnbull Eliza M Mrs weather observer Eagle
 Turner Geo gen mdse Anvik
 U S Cable Office Douglas
 U S Cable Office Sitka
 U S Customs J J Hilliard colr Eagle
 U S Experimental Station Terry White supt Kodiak
 U S Experimental Station Rampart
 U S Experimental Station C C George-son in chg Sitka
 U S Naval Radio Station Kodiak
 U S Navel Radio Station Sitka
 Vachon A G (Tanana Commercial Co) Tanana
 Vachon Louise postmaster Tolovana
 Vachon Peter (Tanana Commercial Co) Tanana
 Valdez Creek Placer Mining Co Gul-kana
 Valier Louis farmer Hot Springs
 VanAtta C H supt U S Bureau of Fisheries Yes Bay
 VanHoivels H postmaster Sumdum
 Vandenweyer H
 Vasalis John lab K C Corp Kennecott
 Vaughn F B Teikell
 Vawter C L Tanana
 Veach Chas lab K C Corp Kennecott
 Veidt C K & Co gen mdse Katalla
 Verhonick Albt freighter Ruby
 Vicery Chas W clk K C Corp Kennecott
 Vick Theo asst U S Bureau of Fisheries St Paul Island
 Viken Paul carp K C Corp Kennecott
 Voelkl Jos Haines
 Vogel Geo Haines
 Vogel Ida M Haines
 Vogel Timothy Haines
 VonScheele Herman gen mdse Afog-nak
 Wacker Eug postmaster Wacker
 Wade Wm A dep colr U S Customs Hyder
 Wade W W agt The ARR Moose Creek
 Wagner Louis logger Tenakee
 Waicumas Benj farmer Haines
 Walker Jas A gen mdse Holy Cross
 Wallace Langley (Alaska Rivers Navigation Co) McGrath
 Wallen Ivor postmaster Chignik
 Walsh John miner Eureka
 Walsh Jos hoistmn K C Corp Latouche
 Walsh Patk miner Eureka
 Walton H H rancher Haines
 Walton Jos Matanuska
 Walton Rudolph Sitka
 Wanamaker H S miner Wiseman
 Ward Chas lab K C Corp Latouche
 Ward C lab The ARR Indian
 Ward John A postmaster Klukwan
 Ward Jos trapper Fort Yukon
 Warne Edwin farmer Haines
 Warsing F M dep U S Marshal Can-dle
 Warwick Jack W fur warden Bu of Biological Surv Flat
 Washington-Alaska Military Cable & Telegraph System Geo Barnett in chg Circle
 Washington-Alaska Military Cable & Telegraph System Fort Yukon
 Washington-Alaska Military Cable & Telegraph System Gulkana
 Washington-Alaska Military Cable & Telegraph System Haines
 Washington-Alaska Military Cable & Telegraph System Hot Springs
 Washington-Alaska Military Cable & Telegraph System Tanana
 Watson M Kotzebue
 Watters W L janitor The ARR Curry
 Watts Vernon miner Wiseman
 Wavell Arthur Windham
 Weatherell T P postmaster Takeetna
 Webbenfurst Chas miner Beaver
 Webster Andw B dep U S Marshal Tanana
 Webster Danl postmaster Nolan
 Webster Edw miner Eagle
 Weeks Jas lab The ARR Matanuska
 Wehren Jos sawmill Douglas
 Weiss A J gen mdse Iditarod
 Weiss R lab The ARR Matanuska
 Welch Fred F gen mdse Chatanika
 Welch Richd lab K C Corp Kennecott
 Wells Curtis trapper Fort Yukon
 Welsh Jos miner Rampart
 Weltzin J A gen mdse Little Eldo-rado
 Werline John trapper Fort Yukon
 Weschenfelder Eug mgr Treadwell Grocery Treadwell
 West Coast Trading Co gen mdse Craig
 Westerlund Joel trapper Hot Springs
 Wettach Shelton gen mdse Ruby
 Whelpley F E fox breeder Myers Chuck
 Whipple Chas H postmaster Thane
 Whitaker Saml G roadhouse Haines
 White Chas H U S insp of hulls St Michael
 White David H postmaster Katalla
 White Frank C Fort Yukon
 White G O postmaster Palmer
 White Harry O asst U S Experimental Station Kodiak
 White Jas clothing Cripple
 White John freighter Nolan
 White John L postmaster Dome
 White J A gen mdse Dahl
 White W T asst in chg U S Experi-mental Station Kodiak
 Wick L emp K C Corp Kennecott
 Wickersham L S postmaster McKin-ley
 Widman W S sawmill Takotna
 Wiehl John miner Rampart
 Wilcox A D farmer Wiseman
 Wiley Robt W Haines
 Wilkes Jos miner Beaver
 Willett Geo dep U S Marshal Craig

Williams Frank P gen mdse postmas-
 ter St Michael
 Willis Anna D Mrs gen mdse Ruby
 Willis A V Kokrines
 Willis Edw C billiards Long
 Wiloughby Chas L gen mdse Katalla
 Willow Creek Mines Wasilla
 Wilmoth Howard E postmaster gen
 mdse Wasilla
 Wilson C H postmaster Kantishna
 Wilson Edw gen mdse Unga
 Wilson Jas miner Wiseman
 Wilson John logger The ARR Indian
 Wilson J R lab K C Corp Kennecott
 Wilson L P & Co gen mdse Klawock
 Windsor Hal electn AGMCo Thane
 Winer Chas miner Nolan
 Winfield Edwin A postmaster gen
 mdse Teller
 Wingard Lemuel G asst agt U S Bu-
 reau of Fisheries Bethel
 Wold Clara wtrs K C Corp Latouche
 Wolfe L H dentist Latouche
 Woll J E miner Wiseman
 Wood Cyril P Flat
 Wood Riley J carp Shungnak
 Wood John C dep U S Marshal Ruby
 Woodman Isaac W lab K C Corp Ken-
 necott
 Woodman Wm trapper Circle
 Woods Ira agt The ARR Iditarod
 Woolard E H Hot Springs
 Workman Harper miner Nolan
 Worthington John lab K C Corp La-
 touche
 Wortman Chas E Sitka
 Yager N Mrs roadhouse Chitina
 Yamada M wtr K C Corp Kennecott
 Yanette Herman trapper Beaver
 Yanette Wm trapper Beaver
 Yantiss S A miner Rampart.
 Yasuda Frank gen mdse Beaver
 Yates D W Windham
 Yates Sylvia S Mrs postmaster Wind-
 ham
 Yehl Chas miner Wiseman
 Young Anna C Mrs dry gds Iditarod
 Young A W cond The ARR Eklutna
 Young Bert Ikatan
 Young Bros (John and David) gen
 mdse Sitka
 Young David (Young Bros) Sitka
 Young F M postmaster Nation
 Young H S gen mdse Kenai
 Young John (Young Bros) Sitka
 Young Ralph fox breeder Sitka
 Youngberg Chas miner Wiseman
 Youngs F E dep U S Marshal Tal-
 keetna
 York Jas Sumdum
 York John miner Windham
 Yost C F miner Eagle
 Yurioff Kuzman dairy Afognak
 Zander Carl miner Hot Springs

